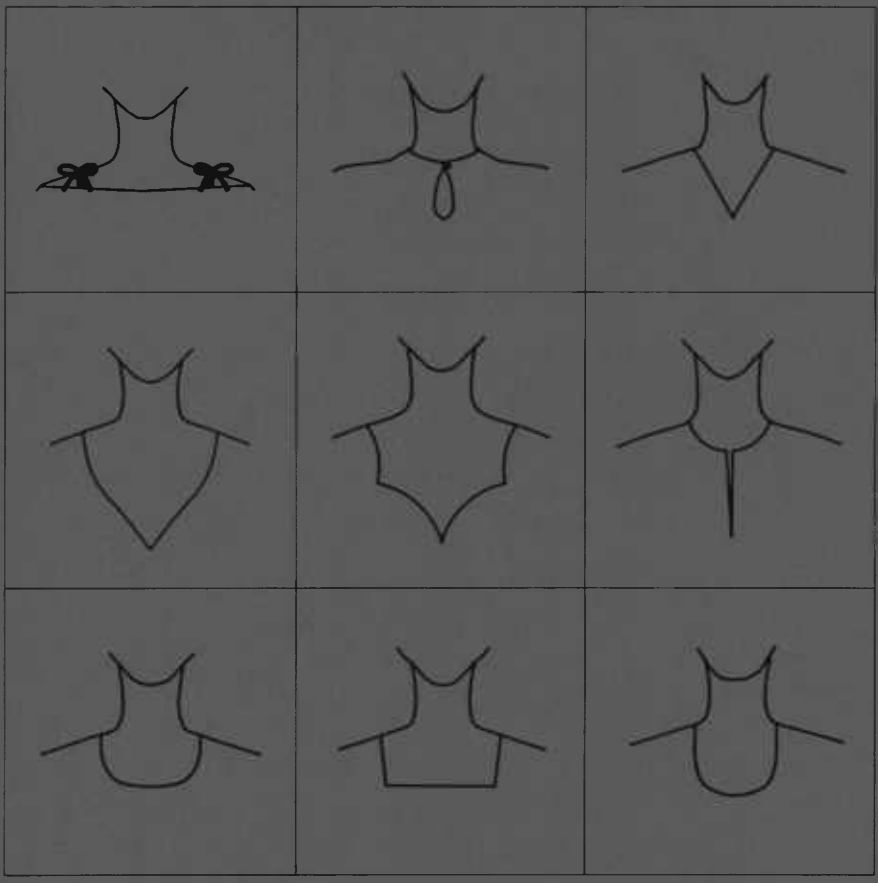


Gabit 13049

2528-4
new

\$2.25

Fashion Terms and Styles for Women's Garments



EC 1382
September 1991



OREGON STATE UNIVERSITY EXTENSION SERVICE

Fashion Terms and Styles for Women's Garments

Contents

Introduction	3
Necklines	4
Collars	7
Band collars	7
Band collars of rib knit	8
One-piece high stand collars	9
Two-piece high stand collars	10
Low stand collars	10
Shawl collars	12
Other collar variations	12
Sleeves	13
Sleeve lengths	13
Set-in sleeves from fitted to full	14
Other set-in sleeves	15
Kimono	16
Raglan	16
Cuffs	17
Pockets	18
Patch pockets	18
In-seam pockets	19
Slash pockets	19
Front-hip pockets	20
Blouses and Shirts	21
Blouse silhouettes	21
Collarless blouses	22
Blouses and shirts with band collar	23
Blouses and shirts with rolled collar	23

Tops and Sweaters	24
Tops and sweaters without fasteners	24
Tops and sweaters with fasteners	25
Dresses	26
Dresses without waistline seam.....	26
Dresses with waistline seam	27
Dresses with or without waistline seam .	27
Pant dresses	28
Jackets and Coats	29
Jackets by length and shape	29
Collarless jackets	30
Jackets with band collars	30
Jackets with high stand collars	31
Jackets with shawl collar	32
Jackets with hood	32
Unfitted outerwear	33
Short coats	33
Fitted coats	33
Semi-fitted coats	34
Loosely fitted coats	34
Skirt and Pant Waist Details	35
Skirts	36
Skirt lengths	36
Skirts from fitted to full.....	37
Other skirt styles	38
Pleat styles	39
Pants	40
Pant lengths	40
Pants from fitted to full	41
Combination of wide and narrow	41
Other pant styles	42

Fashion Terms and Styles for Women's Garments

A.W. Koester and N.O. Bryant

To analyze and describe fashion, you need both visual and verbal vocabularies of terms and styles. This publication provides text and illustrations of basic terms and styles. However, fashion terms change like the fashions themselves. Recognizing some of the current terms and the alternatives used in the past will provide an introduction to changing fashion.

It would take a sizeable book to define fashion terms and styles in all types of garments worn over time. This publication is limited to styles of women's outerwear garments such as dresses, jackets, blouses, sweaters, tops, skirts, and pants. Fashion details that influence the silhouette, such as necklines, collars, sleeves, cuffs, and pockets, are included. Although decorative details are important in making the transitions between seasons and fashion looks, they are too numerous and change too quickly to be included.

In analyzing fashion, we usually begin with the general silhouette and proceed to details. This publication is organized in the opposite manner, beginning with details, because many garments are named for the detail feature. By describing the details first, there is less need to repeat information for application to each type of garment. For example, a V-neckline is a sharp-pointed neckline that is found on blouses, sweaters, jackets, or dresses. If the neckline is the distinguishing feature, the garment may be called a V-neck blouse or dress. Some garments are not illustrated because they are a combination of details. For example, a Victorian blouse has a choker collar, bib neckline, and leg-o'-mutton sleeves.

Within each category, the garments are listed from simple to the complex, from close to the body to full silhouettes, and from short to long. There is an index of terms at the end of the publication. Use the index to find the page where a term is first defined and for locating garments that may have several names.

Ardis W. Koester, Extension textiles and clothing specialist, and Nancy O. Bryant, associate professor, apparel, interiors, housing, and merchandising department, Oregon State University.

Necklines



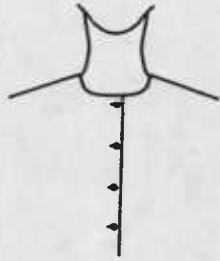
Jewel

High round neckline located at base of neck, usually plain.



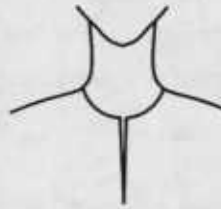
V

Cut down in front or back to a sharp point.



Cardigan

Jewel or V neckline that opens in the front, usually with buttons along center front.



Slit

A narrow vertical opening in a neckline. The slit may be in the front or back. It may be held closed with a button and loop or other fastener.



U

Medium low in front, rounded and the same width as the base of the neck.



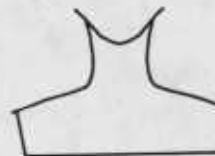
Square

Moderately low-cut neckline, square or angular in front.



Scoop

Medium low in front, rounded and wider than the base of the neck.



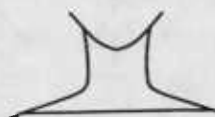
Florentine

Moderately low, but very wide angular or square neckline.



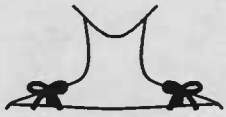
Horseshoe

Low rounded curved neckline, shaped like a horseshoe in front.



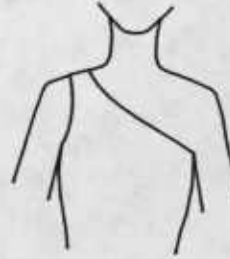
Boat

Wide horizontal neckline, high in front and back. (Also called **bateau neckline**.)



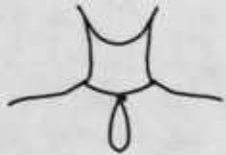
Sabrina

Wide horizontal neckline, not as high as boat and sometimes fastened at shoulders.



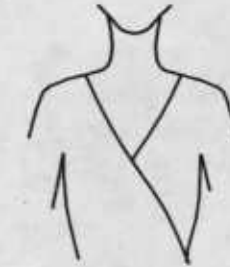
One-shoulder

Asymmetric neckline starting over one shoulder and extending diagonally to under the other arm. (Also called **asymmetric neckline**.)



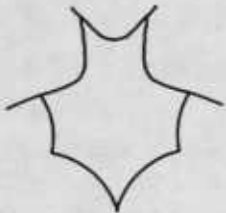
Keyhole

High neckline with opening cut out at front. Opening can be round or wedge shaped.



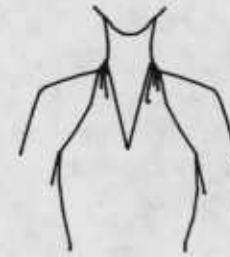
Surplice

Neckline that wraps forming a V neckline in front or back.



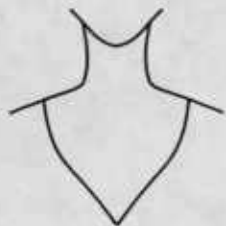
Sweetheart

Lowered front neckline shaped like top of heart.



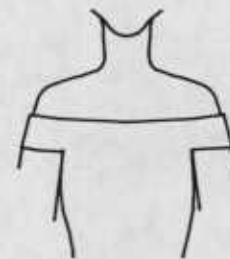
Halter

Sleeveless, with front of garment held around the back of the neck by a band extending from the front.



Décolleté

Any neckline that is cut very low in front. Often refers to wide, gently curving deep V.



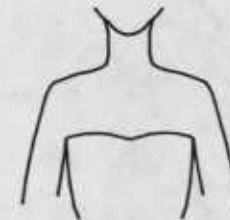
Off-the-shoulder

Low neckline extending around upper part of arms, baring the shoulders.



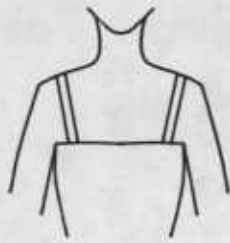
Plunging

Low-cut neckline, usually V-shaped, extending to the level of the breasts or to the waist. Lower than décolleté.



Strapless

Neckline just above the bust. May be held in place by darts and fitting, boning, elastic, or shirring.



Camisole

Neckline just above the bustline, held by straps over the shoulder. Strap width may vary from very narrow (spaghetti) to wide.



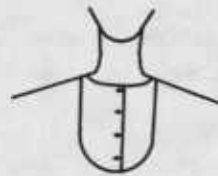
Banded

Flat, shaped narrow band finishing the neckline and front opening.



Funnel

High neckline cut in one with garment by slanting or curving shoulder seams upward towards the neck. (Also called **built-up neckline**.)



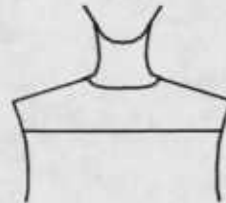
Bib

A front center portion of a garment, usually oval or square. May be set into a blouse or dress below the neckline or extend upward from the waist of pants or a skirt.



Gathered

Full neckline drawn close to neck. May be adjusted or gathered with a drawstring cord or elastic. (Also called **drawstring**, **peasant**, or **gypsy neckline**.)



Yoke

A separate portion of the garment in the shoulder and neckline area. Seamline attaching yoke to lower portion may be straight, horizontal, angled, or curved.



Cowl

Draped neckline resulting from bias cut with excess fabric forming soft folds in front or back.

Collars

Collars are classified as *band*, *high stand*, and *low stand*. Within each type there are several styles defined by the shape of the collar's outer edge.

Band collars

Band collars have a straight or convex neckline edge.



Band (basic)

Straight or slightly curved collar cut on straight yarn direction or bias. May fasten in the front or back. (Also called **stand-up collar**.)



Ring

A band collar on a wide neckline. (Also called the **moat** or **wedding-band collar**.)



Choker

Wide, high band, close fitting collar that fastens in the back. (Also called **Victorian collar**.)



Portrait

A band collar located farther away from the base of the neck than the ring collar.



Chinese

Band collar with square or rounded ends that do not quite meet at center front. (Also called **mandarin** or **Nehru collar**.)



Medic

Narrow band collar that fastens on the right side. (Also called **Ben Casey collar**.)



Wing

Stiff band collar with pointed ends that fold outward.



Cossack

Wide band collar that fastens on the left side. May be embroidered. (Also called **Zhivago** or **Russian collar**.)



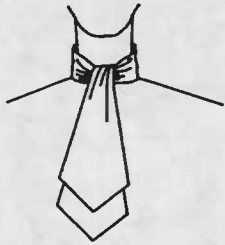
Clerical

Stiff white band collar, fastened in back. (Also called a **Roman collar**.) White collar may be partly covered by a black or colored collar called a **rabat**.



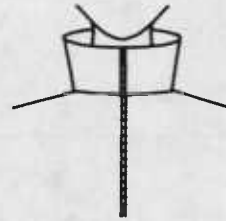
Bow

Long extension of wide band collar tied in a bow.



Ascot

Long medium-wide to wide band collar with the two ends brought to the front and looped over each other. May be an extension of the collar or attached at back neck of collar. (Longer variation called **stock-tie** or **flip-tie collar**.)



Funnel

Large wide band collar variation which stands away from the face. Generally opens in front.

Band collars of rib knit



Crew

High rounded neckline finished with narrow strip of rib knit.



Turtleneck

High rounded neckline finished with very wide strip of rib knit that is often worn folded over.



Mock-turtle

High rounded neckline finished with medium wide strip of rib knit.

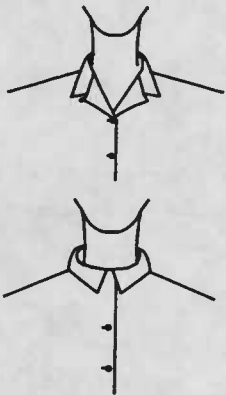
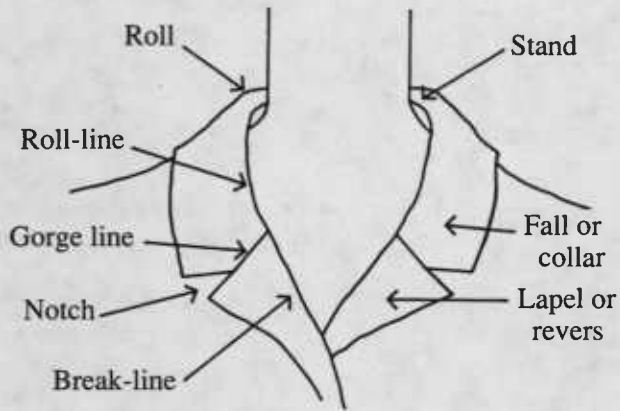


Cowl

Wide bias-cut draped collar. May be of knitted fabric like a wider and deeper variation of the turtleneck which drapes in soft folds.

One-piece high stand collars

High stand collars have a straight or slightly convex neckline shape. The major portion of the collar stands above the base of the neck. (Also called **rolled** or **turned down**.) Parts of the collar are diagrammed below.



Convertible

One-piece high stand collar which can be worn open or closed. Lapels are formed when worn open.



Lapel

Facing of the front of the garment which folds back to show. (Also called the **revers**.) Lapel and collar shapes include:



Notched with square corners on lapel and collar.



Cloverleaf with rounded corners on lapel and collar.

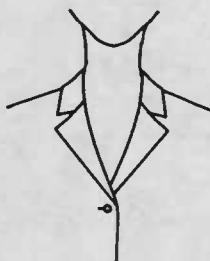


Peaked with sharp point on lapel.



Johnny

Very small high stand collar attached to a V neckline. Usually a single-layer knitted collar.



Notched

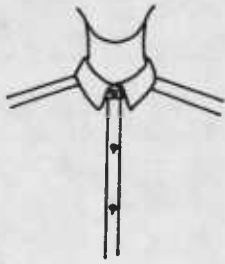
Tailored collar used for suits. There is a notch where the collar ends and joins the lapel.



Chelsea

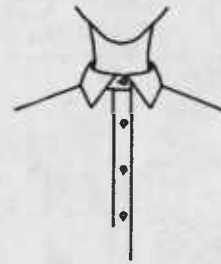
Medium-wide collar with square pointed ends attached to a front opening V neckline.

Two-piece high stand collars

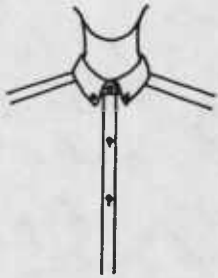


Shirt

The traditional two-piece high stand collar (called band and collar). The ends of the collar may be square, round, or pointed. Variations include:



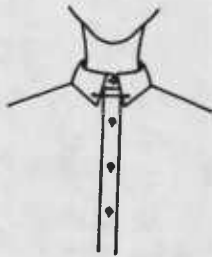
Spread with wide spacing between ends of the collar



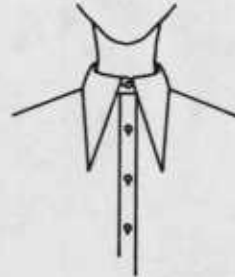
Button-down with buttonholes in the ends of the collar, fastened to the shirt by small buttons



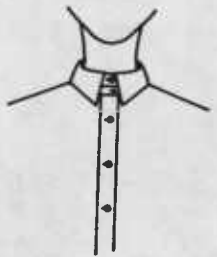
Barrymore with 4- to 5-inch long points in front (similar to Byron or poet's collar.)



Pin with eyelets through which a collar pin is inserted



Swallow-tailed with extremely long, narrow-pointed ends.



Tab with a small strap that buttons or snaps to other side of the space between the ends of the collar.

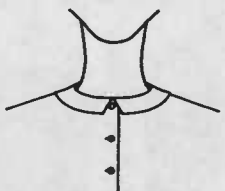


Buster Brown

Medium sized collar with rounded front edges. Usually white and worn with a colored bow.

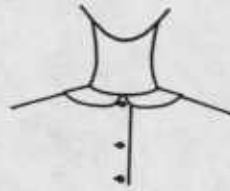
Low stand collars

These collars have a concave neckline shape (also called flat collars).



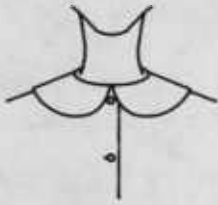
Bermuda

Narrow collar with squared ends at center front.



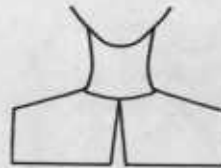
Peter Pan

Narrow collar with rounded ends at center front.



Choir-boy

Medium-sized collar with rounded ends at center front.



Puritan

Wide collar extending to the shoulders with squared corners at center front and outer edges.



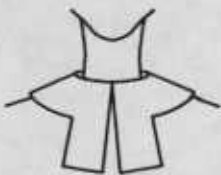
Platter

Medium-sized collar with large rounded ends in front. (Also called **dog's ear collar**.)



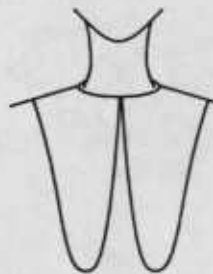
Sailor

Collar is square in back and tapers to a V in front. Variations include braid trim around the edges and a dickey or inset in the V. (Also called **middy** or **nautical collar**.)



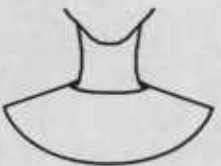
Bishop

Large round collar. The front edges extend downward and are squared.



Butterfly

Extremely large collar extending to shoulders. Front hangs down in two points almost to waist.



Bertha

Wide rounded collar extending from neckline to shoulder. Opening may be at front or back.



Cape

Large circular collar that extends over the shoulders.



Pilgrim

Wide rounded collar extending to shoulders with pointed ends at center front.

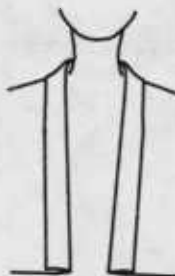
Shawl collars

Shawl collars are formed by an extension of the garment front. They may be high stand, low stand, or band collar types. The collar must be seamed at center back.



Shawl

Collar formed by an extension of the facing and garment front (undercollar).



Tuxedo

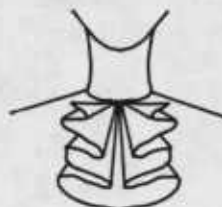
Variation of a shawl collar, that continues the length of the garment front opening.

Other collar variations



Straight ruffle

Straight piece of fabric, lace, or trim gathered to neck edge to form ripples.



Cascade

Circular-cut ruffle attached to neckline at center front of garment.



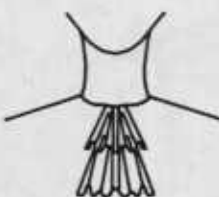
Pierrot

A straight ruffled collar that lays on top of the shoulders. It usually has two rows of ruffles.



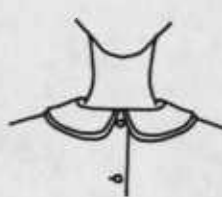
Bib

Flat rounded, square, or oval shape fitting around the neck like a child's bib.



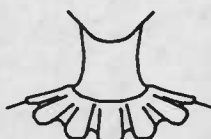
Jabot

One or more straight ruffles attached to neckline at center front.



Double

Two collars of the same shape, the upper one smaller to show the lower one.



Circular ruffle

Edging made from circular piece(s) of fabric.

Sleeves

Sleeve lengths

Drop shoulder

The sleeve is attached to an armhole shaped to extend wider than the natural shoulder.

Cap

Extension to the front and back of the garment to cover the top of the arm.

Short

Sleeve length ending about half the distance between elbow and underarm.

Elbow length

Any style sleeve that ends at the elbow.

Bracelet

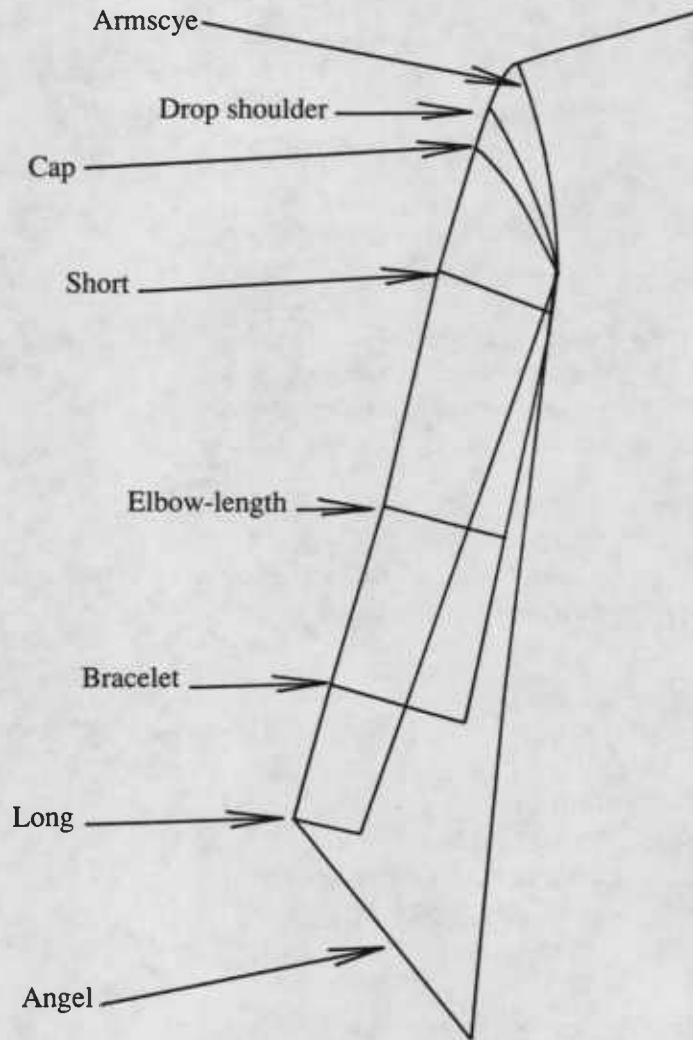
Three-quarter length cuffless sleeve to show bracelet.

Long

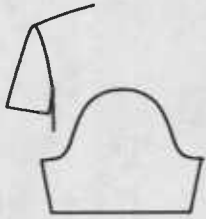
Long sleeve tapered to the wrist so it can be pushed up to stay in place (also called **push-up**).

Angel

Any long flowing sleeve. May extend longer than the arm.

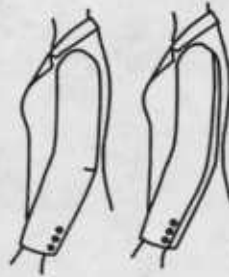


Set-in sleeves from fitted to full



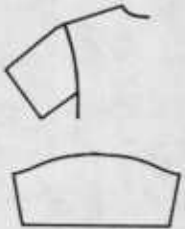
Set-in

The set-in sleeve has a high rounded sleeve cap. The sleeve underarm seam and the blouse side seam are constructed first so the sleeve is set into the armhole. May be any length.



Fitted

A full-length narrow set-in sleeve. May either be one-piece with darting at the elbow or two-piece with vertical seams down front and back of arm. (Also called **suit sleeve**.)



Shirt

A sleeve with a barely rounded wide sleeve cap, attached to the armhole before the underarm seam and side seam are sewn as a continuous seam. May be any length. Long shirt sleeves are usually cuffed. (Also called **tailored shirt sleeve**.)



Bell

A set-in sleeve that is smooth at the armhole, flared at hem edge.



Barrel

Straight long set-in or shirt sleeve which is smooth at the armhole with minimal fullness at the cuff.



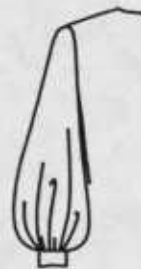
Butterfly

A set-in sleeve that is smooth at the armhole, widely flared at the hem edge (elbow length or longer).



Roll-up

Straight short or elbow length sleeve designed to be rolled or folded up to form a cuff. May be either set-in or shirt sleeve.



Bishop

Long full set-in sleeve with fullness held at wrist by cuff. May be gathered at cap as well as at wrist.



Button-tab

A long roll-up sleeve with a button-tab sewn above the elbow. The sleeve is rolled up and fastened by the tab with buttonhole and button. May be either set-in or shirt sleeve.



Puffed

Short full sleeve with gathers at armhole or lower edge or both. (Also called **puff** sleeve.)



Leg-o'-mutton

Sleeve with full gathered or pleated top tapering to narrow at the wrist. (Also called **leg-of-mutton** sleeve.)



Balloon

Long full sleeve with gathers at armhole and at lower edge. Usually made of crisp fabric.

Other set-in sleeves



Petal

Sleeve with curved overlap along outer arm. (Also called **lapped**.)



Circular cap

Short flaring sleeve that extends out from smooth cap at armhole.



Melon

Sleeve made in lengthwise sections that are wider in the middle of the sleeve to give a melon shape in the middle of the sleeve. Usually made of stiffened fabric.



Juliet

Long sleeve with a puffed upper section seamed to a fitted lower section.



Lantern

Long or 3/4-length sleeve made with crosswise design seam(s) to give width. Sleeve is smooth at the armhole and wrist.

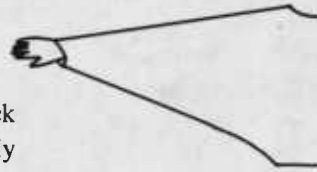
Kimono

Kimono sleeves are usually cut in one with front and back of garment.



Kimono

Sleeve may be cut in one with the front and back of the garment or may be attached to the front and back with a vertical seam. Shape is usually angular under the arm in contrast to curve of dolman. (Also called **mandarin sleeve**.)



Batwing

Long sleeve with deep armhole almost to the waist and extending to narrow wrist. May be cut in one with garment or may be a separate sleeve.



Dolman

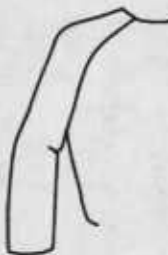
Sleeve may be cut in one with the front and back of the garment or may be attached to the front and back with a vertical seam. Shape is usually curved under the arm. Sleeve is usually long and fitted at the wrist.



Cape sleeve

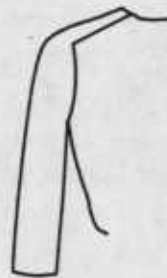
May either be a semicircular extension of the front and back or a circular or semicircular piece sewn over the top of the shoulder to give a cape effect.

Raglan



Raglan

Sleeve joined by diagonal seam that extends from underarm to neckline. May have a dart to shape the shoulder or may have an additional seam along the outside of the arm.



Saddle

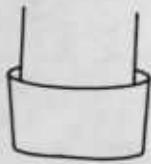
Variation of the raglan in which the shoulder portion is horizontal across chest then diagonal under arm. (Also called **epaulet sleeve**.)



Peasant

A wide raglan sleeve with gathers at the neckline and lower edge. Gathers may be controlled by drawstring or elastic. Sleeve may be short or long.

Cuffs



Roll-up

Usually a straight sleeve which is folded up to form a cuff.



Barrel

A band of fabric stitched to the sleeve. Usually closed with one or two buttons. (Also called **single cuff**.)



Knit

Rib knitted fabric which fits closely but is stretchy enough to slip over the hand.



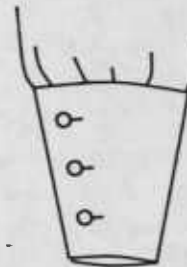
French

Wide cuff which turns back and is fastened with a cuff link through all layers.



Band

Has no vertical opening. It slips on over the hand.



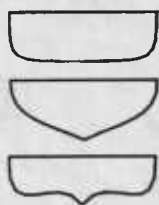
Gauntlet

A wide turned-back cuff that flares wide at the arm and tapers toward the wrist. (Also called **cavalier cuff**.)

Pockets

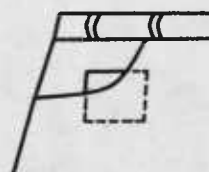
The four basic types of pockets are patch, in-seam, seam, slash, and front hip. (Dotted lines on the illustrations indicate edges inside the garment.)

Patch pockets



Flap

Separate piece of fabric that hangs down over the pocket opening. Pocket may be patch or slash. The flap may be a variety of shapes.



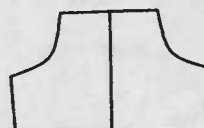
Key

Small patch pocket sewn inside a larger pocket to hold keys or coins. (Also called coin pocket.)



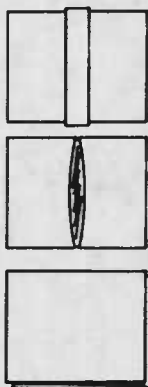
Patch

Patch pockets are stitched onto the outside of garment. Lower edge of pocket may be square, rounded, or angular.



Kangaroo

Large patch pocket placed on the center front just above the waist.



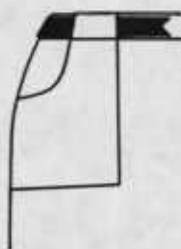
Bellows

Patch pocket that allows for expansion from a pleat in the center of the pocket or along both sides of the pocket.



Handwarmer

Double-layer patch pocket. One layer opens from the top while the other layer opens on the side allowing the hand to be held inside.



Cargo

Large patch pocket with a curved upper side extending to the waist forming a belt loop.

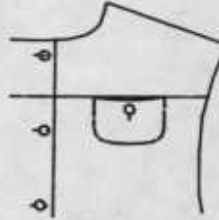
In-seam pockets

In-seam pockets are inserted in a seam such as side seam or yoke seam. The pocket bags are attached to the seam allowances and are not visible from the outside.



Side or vertical design seam

Pocket bags are attached to vertical seam allowances.

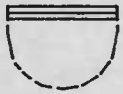


Yoke or horizontal design seam

Pocket bags are attached to horizontal seam allowances or cut-in-one with yoke piece.

Slash

Slash pockets are made around an opening cut in the garment.



Bound

A slash pocket with both edges of opening finished with binding. (Also called **buttonhole**, **besom**, **slit**, **slot**, or **double welt pocket**.)



Half-moon

Curved bound pocket used on western shirts. May be reinforced at the ends with embroidered arrows.



Stand

A slash pocket in which the lower edge is finished with a separate piece that stands above the pocket opening. (Also called **breast pocket**.)



Welt

A slash pocket with the lower opening finished by an upstanding welt which fills the opening.



Hacking

Slash pocket(s) with flap located at an angle near waist level on jackets or coats.

Front hip pockets

Variation of the in-seam pocket in which the garment front is shaped and faced by the front pocket bag. The inner pocket bag fills in the cutaway portion of the garment front.



Continental

Front hip pocket formed by two angles from waistline to side seam.



Western

Front hip pocket forms a curve from waistline to side seam.

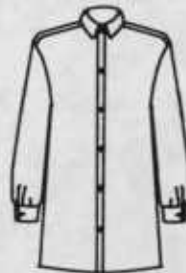
Blouses and Shirts

Blouse silhouettes



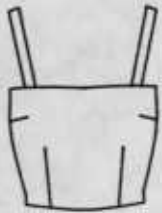
Bustier

Strapless top which may be fitted with darts, boned, or held in place by elasticized shirring. (Shirred style may be called **tube top**.)



Oversized

Any style blouse or shirt cut extra large and sometimes extra long. (Also called **big shirt** or **boyfriend shirt**.)



Camisole

Top with camisole neckline.



Smock

Oversized blouse with yoke and fullness below yoke. Usually long sleeved and worn as a coverup.



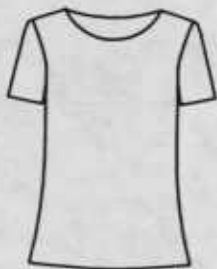
Cropped top

Fitted short blouse reaching to the ribs. Usually features a scoop neckline and short sleeves. (Also called **bare midriff**. Fitted variation called **choli**.)



Peplum

Overblouse with a separate seam at the waist to which is attached a ruffle, shaped, or bias-cut piece. May also describe an elongated blouse with elasticized waistline.



Overblouse

Blouse worn over the skirt or pants rather than tucked inside. Sometimes has slits at side seams.



Blouson

Overblouse with length and fullness above the waist. For blouses the fullness is usually gathered into a band.



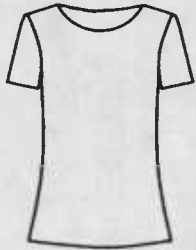
Flange

Wide vertical pleat formed by a fold over the top of the armhole seam extending to waist or hem.



Body blouse

Very close-fitting blouse or shirt, usually of knitted or stretch fabric. Has a pant section, with snap crotch. (Also called **body shirt**.)

**Torso**

Overblouse that fits snugly through the waist and extends to the hips.

**Pullover**

Blouse which pulls on over the head. May or may not have a collar, but has neckline large enough to go over the head. May have short or long sleeves. (Also called **slip-on blouse**.)

**Tunic**

Extended mid-thigh or longer overblouse of any style. Usually straight or slightly fitted and worn beltless. (May be considered a two-piece dress when worn with a straight skirt.)

**Wrap**

Blouse with crossover front. Usually held closed by skirt or pants waistband. (Also called **surplice blouse**.)

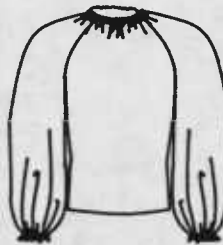
**Twinset**

A pair of blouses or sweaters designed to be worn together. The overblouse is usually long sleeved with a buttoned front and the underblouse is similar to a shell or camisole. Sweaters with the same look may be called **sweater set**.

Collarless blouses

**Shell**

Sleeveless blouse with jewel or scoop neckline. May be buttoned in back or pullover.

**Peasant**

Blouse with drawstring or elasticized neckline and raglan sleeves. (Also called **gypsy blouse**.)

Blouses and shirts with band collar



Bib

Back-closing blouse with band collar and square or rounded inset in front. (Also called **tuxedo blouse** if the yoke is pleated.)

Blouses and shirts with rolled collar



Shirt or shirtwaist

Blouse styled similar to a man's tailored shirt including one- or two-piece high stand collar, yoke, left chest patch pocket, and button band front opening. Hem is usually curved. (Also called **tailored blouse**.)



Western

Shirt with high stand collar, front and back shaped yoke, flap pockets or half moon pockets, large snap closings, and piping. (Also called **cowboy shirt**.)

Tops and Sweaters

Tops and sweaters without fasteners



Tank top

Knitted pullover shirt with scooped neckline and large sleeveless armholes. (Also called **athletic shirt** or **singlet**.)



Ski

Heavy pullover sweater. Frequently a striped or elaborately patterned sweater in Jacquard knit.



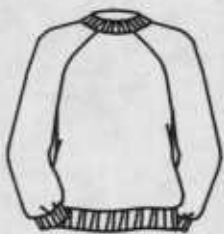
T-shirt

Knitted pullover shirt with ribbed crew neck and short or long sleeves. Usually made of cotton or cotton and polyester blend. (Also called **crew** or **crew-neck**.) Length may be extended to be called **T-shirt dress**.



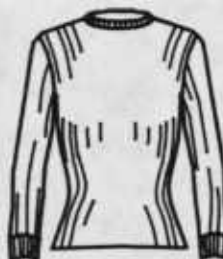
Tennis

Pull-on, long-sleeved sweater with a V-neck. Sometimes includes cable-knit pattern. Usually in white with narrow bands of color at neck and wrists.



Sweatshirt

Pullover of fleece-backed heavy knit with ribbed neck, wrist, and waistband.



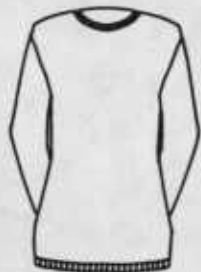
Poor boy

Pullover of rib knit to be form fitting. Usually has round neck or turtleneck and long or short sleeves.



Shrink

Sleeveless pullover sweater with look of a short vest. Usually features a wide ribbing extending from below bust to waist.



Fanny

A long sweater that covers the buttocks or “fanny.”

Tops and sweaters with fasteners



Henley

Knitted, short-sleeve, pullover shirt, collarless with a buttoned placket front. (Variations include **Wallace Beery** of narrow rib knit with long sleeves and narrow self-binding at neck, and **skivvy** (“sailor’s undershirt”) with bound neckline and tiny placket opening in front.)



Letter

Bulky V-neck cardigan, shawl-collared cardigan, or pullover sweater with school emblem or letter on the left front chest. (Also called **award** or **school sweater**.)



Polo

Knitted pullover shirt with a single-layer knit, square-cornered collar and buttoned placket front.

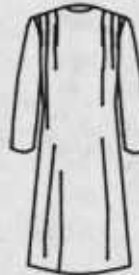
Dresses

Dresses without waistline seam



Chemise

Straight dress without a waistline seam, cut with few or no darts. (Also called **shift**, **sack**, or **pencil**.)



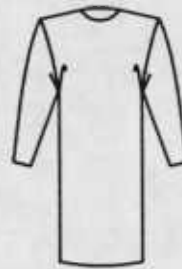
Float

Straight dress with no waistline seam, fullness controlled from pleats or gathers at shoulders or yoke.



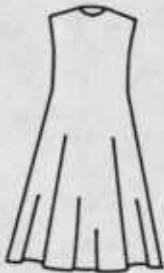
A-line

Dress with normal shoulders, slight flare toward the hemline, but without a waistline seam. (Also called **shift** or **skimmer**.)



Wedge

Dress without a waistline seam, has wide shoulders and tapers to a narrow hemline. Usually has dolman sleeves.



Trapeze

Dress with normal shoulders, no waistline seam, more flare at the hemline than A-line.



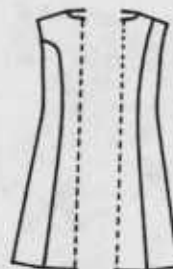
Sheath

Straight narrow dress without waistline seam, fitted with darts.



Tent

Dress with normal shoulders, no waistline seam but very wide, full, and flaring hem.



Princess

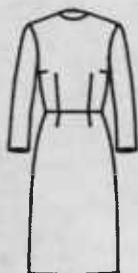
Dress without waistline seam, fitted by curved seams originating at the shoulder or armhole, extending over the bust to the hem. The skirt may or may not be flared.



Caftan

Long dress with decorated opening for the neck and long sleeves.

Dresses with waistline seam



Basic

Simple fitted dress, usually cut with jewel neckline, darts, fitted set-in sleeves, natural waistline, and straight skirt. (Also called **fitted dress**.)



Elasticized waist

Waist contains elastic for comfort. Dress may be of any style, either with or without waistline seam. May be belted or unbelted.



Empire

Dress with high waistline under the bust.



Shirtwaist

Dress with bodice styled like a tailored shirt, usually buttoned from neck to below waist, with either a straight or full skirt. (May be called **shirt dress** if it does not have a waistline.)



Drop waist

Dress with elongated bodice so that waistline seam falls below waist. (Also called **low-torso**. Unfitted variation of soft, drapable fabric with short skirt may be called a **flapper dress**.)

Dresses with or without waistline seam



Jumper

Sleeveless, collarless dress worn with a blouse or sweater underneath.



Sundress

Dress with camisole or halter type top worn for casual summer wear.



Coat dress

Dress which fastens (usually with buttons) from the neck to the hem like a coat. Dress may be single- or double-breasted, worn belted or unbelted.



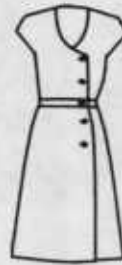
Asymmetric

Dress that is not the same on left and right sides. May drape to one side or close to one side. May cover only one shoulder. (Also called **one-shoulder** or **toga**.)



Draped

Dress with additional fullness pleated, gathered, or held to one side.



Wrap

Dress wraps and fastens to one side, either front or back. May be held with button/buttonhole, tie, or belt. Variations include **back-wrap**, **kimono**, **surplice**, and **bathrobe dresses**.

Pant dresses



Pant dress

Combination bodice with divided or split skirt. Variations include **culotte dress**, **pantgown**, **panel pant dress**, and **pantshift**.

Jackets and Coats

Jackets by length and shape

Jacket lengths used by consumers refer to body landmarks such as waist, hip, crotch, and thumb. Apparel industry personnel use center back length measurements in inches from the base of the neck to the hem. The approximate landmark inch equivalents for size 10 are given below.

Waist = 18/19 inches from neck to hem at center back

Hipbone = 19/20 inches from neck to hem at center back

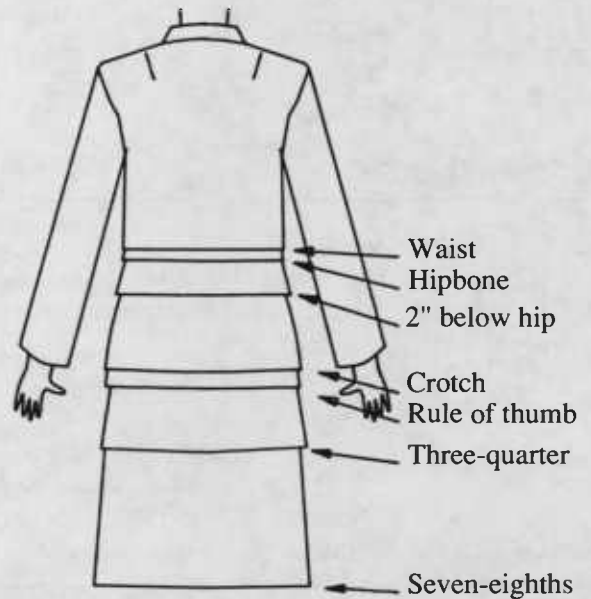
2 inches below hip = 23/24 inches from neck to hem at center back

Crotch = 27 inches from neck to hem at center back

Rule of thumb = 28/29 inches from neck to hem at center back

Three-quarter length = 29 inches from neck to hem at center back

Seven-eighths = 34 inches from neckline to hem at center back



Bolero

Very short, waist length or above the waist, collarless and buttonless. May be long- or short-sleeved or sleeveless. Variation with long sleeves, epaulets, and braid trim is called a **toreador**.



Box

A straight unfitted jacket, waist-length or longer. May or may not have a collar.



Chanel

Waist length or slightly longer, unfitted, collarless jacket. Edge usually trimmed with braid.



Fly-away

Back and sides of jacket have exaggerated flare or fullness. (Also called **trapeze**.)



Single-breasted

Conventional center front closing with a single button or several buttons.



Double-breasted

Front closing with wide overlap. Appears to be closed with a double row of buttons, although only one set may actually function while the other is decorative.

Collarless jackets



Cardigan

Collarless jacket of any length with front button closing. Neckline may be round or V shaped.



Chubby

Waist or high-hip-length coat with heavily padded shoulders, sleeves the same length as the coat, and usually made of fur or a pile fabric to give a bulky look.

Jackets with band collars



Bell boy

Waist-length, fitted jacket, with stand-up collar, usually trimmed with brass buttons.



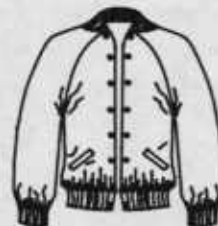
Tyrolean

Waist- to hip-length jacket with band collar. May have wide lapels. Usually closed with decorative buttons.



Nehru

Hip-length, slightly fitted jacket with band collar, buttoned at center front. (Also called **rajah** or **mandarin**.)



Baseball

Waist-length jacket with knitted collar, cuffs, and waist finish, large snap-front closing.



Chinese

Hip-length, straight jacket with band collar and side front closing. (Also called **Mao** or **coolie coat**.)

Jackets with high stand collars



Blazer

Classic jacket is semi-fitted, single-breasted with two or three buttons, three patch or slash pockets, notched collar.



Windbreaker

Lightweight waist-length jacket with elasticized cuffs and waistband, high stand collar, zipper or large snap-front closing.



Safari

Originally designed as African hunting jacket. Single-breasted hip-length style with bellows pockets on chest and hips, fabric belt. (Also called **bush jacket**.)



Parka

Waist or hip length jacket of windproof, water repellent fabric, usually insulated. May have attached hood. (Also called **ski jacket**.) See insulated jacket, below.



Norfolk

Hip-length jacket with two box pleats stitched from the shoulder to the hem, except for a slot at the waist through which the matching belt is threaded. May have hip level patch pockets.



Insulated

Jacket of closely woven outer fabric, filled with down or fiberfill, usually closed with a zipper covered by a storm flap. Lining and insulation may be quilted or outer fabric and lining may be quilted to hold insulation in place. (Is one type of **parka** or **ski jacket**.)



Pea

Double-breasted hip-length jacket with large buttons (usually metal), vertical slash pockets, wide high stand collar, and wide lapels. Traditional color is navy blue. (Also called **pea coat** or **pilot coat**.)



Battle

Slightly below waist-length jacket with fitted waistband and notched collar. Usually has patch pockets with flaps. (Also called **Eisenhower jacket**.)



Eton

Waist to hip length straight-cut or semi-fitted jacket with high stand notched collar and wide lapels worn unbuttoned or with only top button closed.



Bomber

Slightly below waist-length jacket with in-seam pockets adapted from U.S. Air Force pilot jackets. Original jackets were leather with sheepskin lining. (Also called **flight jacket**.)



Shearling

Jacket in a variety of shapes made from sheepskin tanned with the wool attached and sewn with the wool on the inside. May also be made from manufactured fleece.



Western

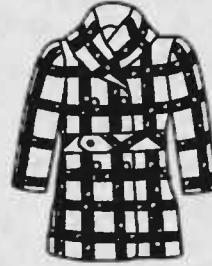
Waist- to hip-length jacket with yoke and breast pockets. Sometimes has fringed leather from the yoke, sleeves, and hem.

Jackets with shawl collar



Spencer

Waist-length, single-breasted jacket with shawl collar.



Mackinaw

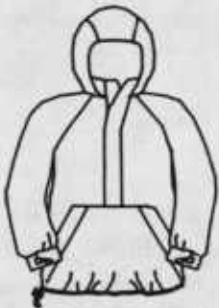
Double-breasted, shawl or high stand collar, belted hip length jacket of blanket-like wool fabric with a striped or plaid design.



Smoking

Shawl-collared, buttonless wrap jacket fastened with soft fabric tie belt.

Jackets with hood



Anorak

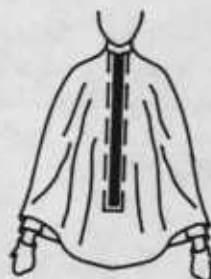
Pull-over jacket usually with hood. Front neck opening may be closed with zipper or snaps.

Unfitted outerwear



Stole

A rectangle or triangle of fabric that is wrapped around the body.



Poncho

Geometrically (rectangular or oval) shaped piece of fabric with an opening cut for the head. May have a front neck opening, pockets.



Cape

Sleeveless outer garment with front opening, usually cut in a geometric shape such as a rectangle, circle, or oval. May have slits for the arms.

Short coats



Pant coat

Thigh length coat in a sporty style. (Also called **car**, **stadium** or **suburban coat**.)



Duffle

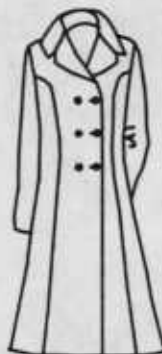
Three quarter length coat usually with attached hood, fastened with wooden or metal toggles. (Also called **toggle coat**.)

Fitted coats



Princess

Fitted to the waist with long seams from the armhole or shoulders, no waistline seam, flared hemline, usually single-breasted with low stand collar.



Coachman

Coat fitted to the waistline with a flared hem line, double-breasted, wide, high-stand collar and wide lapels, brass buttons.

Semi-fitted coats



Chesterfield

Semi-fitted, single, or double-breasted front, high stand collar and lapels usually in velvet, wide lapels. May have fly front or concealed closing.



Trench

A sturdy raincoat of water repellent fabric, which is usually double-breasted, has high stand collar with large lapels, loose shoulder yoke, epaulets, slash pockets, and belt with buckle.



Reefer

Double-breasted with wide collar and lapels, fitted at the waist with long seams from the shoulders or armhole to hem, flared hemline.



Wrap

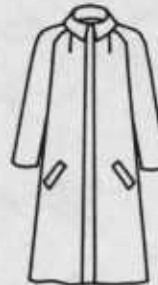
Straight coat without buttons, held with tie belt, usually double-breasted to allow for adequate overlap .

Loosely fitted coats



Polo

A boxy, straight coat, single or double-breasted, with large buttons, optional sash belt or half belt, high stand collar. Usually camel colored.



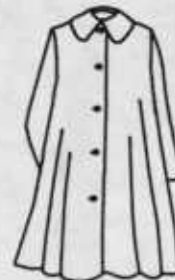
Balmacaan

Loose-fitting coat with raglan sleeves and small convertible collar, fly front may conceal buttons.



Slicker

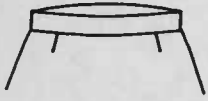
Boxy coat made of brightly colored waterproof vinyl, frequently has metal clip fasteners. May have attached or separate hood.



Tent

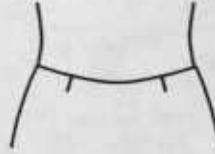
A shaped coat, narrow at the shoulders and very flared at the hem. (Also called swing, swagger, or pyramid coat.)

Skirt and Pant Waist Details



Banded

Skirt or pants attached to a straight waistband. Band width may vary from narrow (3/4 inch) to wide (from 2 to 3 inches). Variations include shaped or pointed waistbands.



Hip hugger

Skirt or pants that hang from the upper hips. Usually bandless. Pant variations called **hipsters** or **low-slung**.



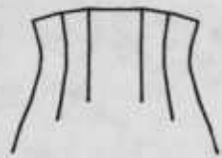
Bandless

Skirt or pant top edge finished with shaped facing rather than a waistband. (Also called **faced** or **contour waist**.)



Pull-on

Skirt or pants with an elasticized waist. Variation is **drawstring waist**, with cording to control waist fullness.



High rise

A very high waistband extending above the natural waist. Variation may include shaping of the skirt or pant to extend above the waist.



Yoke

Separate fitted section between waist and hip.

Skirts

Skirt lengths

Measurements used in industry are based on a size 10 who is 5 feet 5 inches to 5 feet 6 inches tall without shoes.

Micro-mini

Extremely short skirt, length is less than 15 inches.

Mini

Short skirt, measuring about 15 inches from waist to hem, hem is about mid-thigh length.

Above-the-knee

Skirt about 1 to 2 inches shorter than mid-knee. Skirt length is 21 to 22 inches from waist to hem or 19 to 20 inches from the floor.

Knee

Skirt measuring about 23 inches from waist to hem, to mid-kneecap length or 18 inches from the floor.

Below-the-knee

Skirt hemline 1 to 3 inches below knee. The skirt measures 24 to 27 inches from waist to hem or 14 to 17 inches from the floor. (Also called **street** or **cocktail length**.)

Mid-calf

Skirt length about 27 inches from waist to hem with hemline located halfway between knee and ankle, about 14 inches from the floor. (Also called **midi** or **ballerina length**.)

Below mid-calf

Skirt length about 31 inches from waist to hem or about 10 inches from the floor. (Also called **long**.)

Lower-calf

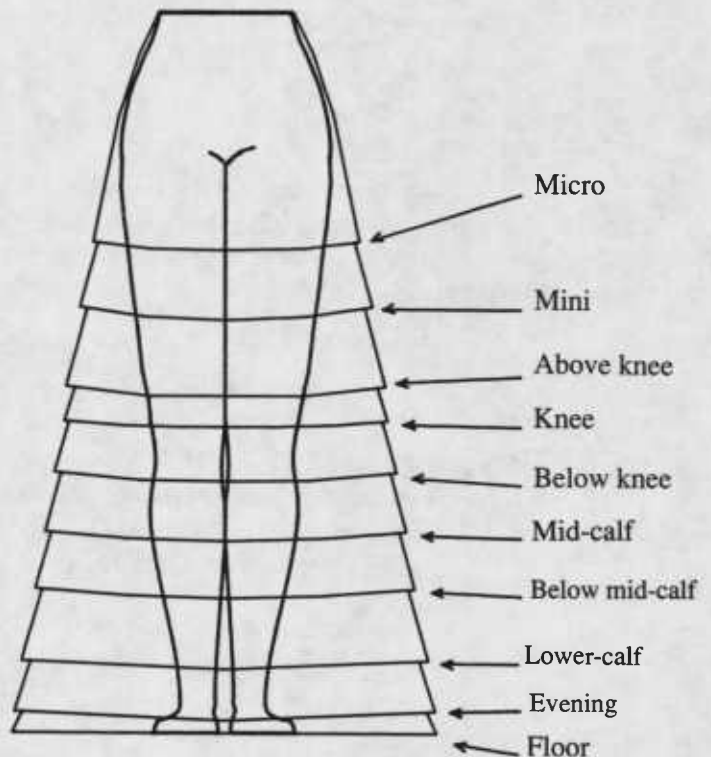
Skirt length about 33 inches from waist to hem or about 8 inches from the floor. (Also called **long** or **maxi**.)

Evening length

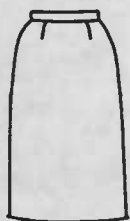
Skirt length about 40 inches from waist to hem or 1 inch from the floor. (Also called **formal length** or **full length**.)

Floor length

Skirt length about 41 inches from waist to hem. Garment touches the floor.



Skirts from fitted to full



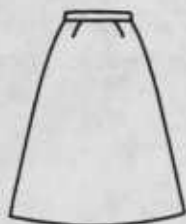
Straight

Slim, straight, fitted at the waist with darts or pleats, usually has a waistband. (Also called **sheath** or **slim skirt**.)



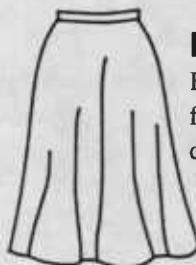
Balloon

Fitted at the waistline with fullness gathered into a band at the hemline.



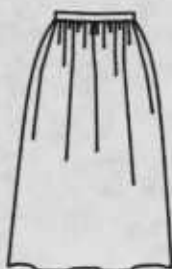
A-line

Fitted at the waistline with darts or pleats, has a slight flare toward the hem.



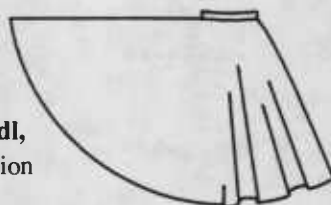
Flared

Fits smoothly at the waistline area, but flares at the hemline. May be cut from a quarter- to half-circle of fabric.



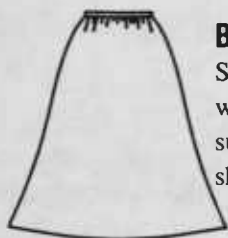
Gathered

Skirt cut of straight piece of fabric, gathered at waistline. Amount of fullness may vary. (Also called **dirndl**, **full skirt**, or **bouffant**.) A full variation supported with crinolines or circular wires may be called a **hoop skirt**.



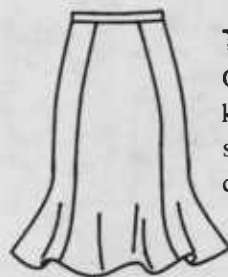
Circular

Skirt cut from a half, complete, or multiple circles of fabric. (Also called a **circle skirt**. Short length may be called **skating skirt**.)



Bell

Slightly gathered or pleated at the waistline, slightly flared and stiffened or supported with crinoline to form bell shape.



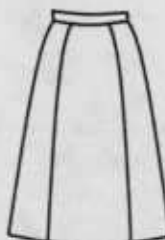
Trumpet

Gored skirt that flares severely below the knees. Another variation is the straight skirt with circular lower section. (Also called **morning glory** or **swing skirt**.)



Bubble

Gathered at the waistline and with fullness gathered into a band at the hemline.



Gored

Skirt with vertical seamlines. Most designs are fitted at the waist with flare toward the hem. Skirts may have four, six, eight, or more gores.



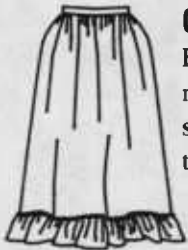
Godet

A triangular piece set into a skirt gore seam to give added fullness to a flared hem edge.



Tiered

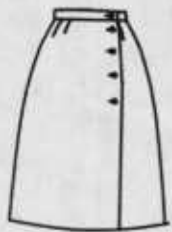
Made of a series of ruffles or tiers which may be pleated, shirred, or flared, with each progressively larger than the previous tier from the waist to the hem. Tiers may be attached to the previous tier or attached to a base such as a straight skirt. **Squaw skirts** usually have three tiers of tiny pleats. (Also called **square dance skirt**.)



Granny

Full-length gathered skirt usually with a ruffle at hem. Variation called **prairie skirt** may be any length and have one or two ruffles at the hem.

Other skirt styles



Wrap

A skirt with two vertical edges open from the waist to the hem, wrapped and overlapped around the body. Fastened at the waist by ties or buttons. May wrap across front or back.



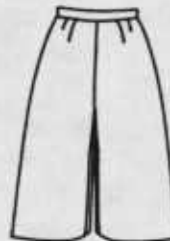
Peg-top

Pleated, tucked, or gathered at the waist and hips but tapering to narrow at the hem. (Also called **pegged skirt**.)



Kilt

Scottish knife pleated skirt, with wrapped, unpleated front panel, fastened with leather straps and buckles, or decorative pins.



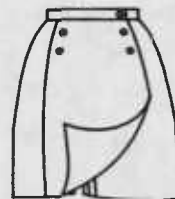
Pantskirt

Pants cut to skirt length with fullness to resemble a skirt. (Also called **divided skirt**, **culotte**, **gaucho**, or **split skirt**. Short lengths are called **scooter** or **skort**.)



Draped

Skirt with additional fullness pleated, gathered, or draped on one side. (Also called **sarong skirt** if wrapped.)



Panel pant skirt

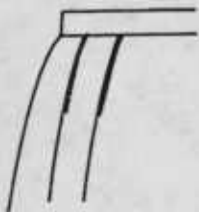
Divided skirt with free hanging panel in front and back giving the effect of gored skirt.



Slit

Straight skirt with vertical opening at side, front, or back. Slit may extend to knee or thigh.

Pleat styles



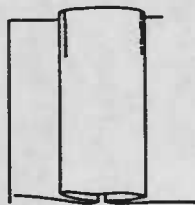
Pleated

Skirt with fullness added by one or more folds of fabric. Box, inverted, and knife pleats with the folds held in place by the waistband are called unstitched pleats, or the pleats may be held in place by edge-stitching. Stitching may extend to the hip or thigh. Some pleat variations include the following.



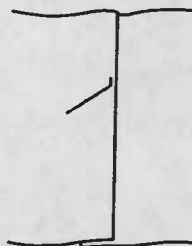
Accordion

Narrow pleats. May be a circular skirt with pressed-in ridges or edge-stitching. (Also called **sunburst** or **crystal pleat**.) Wider pleat variation called **umbrella pleat**.)



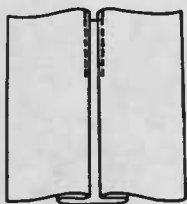
Box

Double pleat formed by folds going in opposite directions. May be single or multiple.



Kick

A pleat in the lower portion of the garment. May be a box, inverted, or knife pleat.



Inverted

Reverse of box pleat made by bringing two folds to a center line. May be single or multiple.



Knife

One or more pleats that face one direction.

Pants

Pant lengths

Boy shorts

Square leg hemmed 1 to 1 1/2 inches below crotch. (Also called **short shorts** or **hot pants**.)

Jamaica shorts

Mid-thigh length shorts between Bermuda and boy shorts.

Jams

Full-cut, elasticized waist, above-knee length pants.

Bermuda

Short knee length pant that fits closely.

Safari shorts

Knee length or shorter pants with comfortable fullness and patch pockets. May be cuffed.

Walking shorts

Knee-length pants with fullness from pleats or gathers. May be cuffed.

Surfers

Tight-fitting pants that end at the knee.

Deck

Fitted pant with hem just below the knee. Straight-cut pants are called **pedal pushers**.

Clam digger

Mid-calf pant with straight or fuller cut, cuffed.

Gaucha

Flared calf-length pants, frequently of leather or firm fabric. (See *Pantskirt*, page 38.)

Cropped

Pants cut at varying lengths between ankle and knee.

Seven-eighths

Any style of pants coming to just below the calf of the leg.

Capri

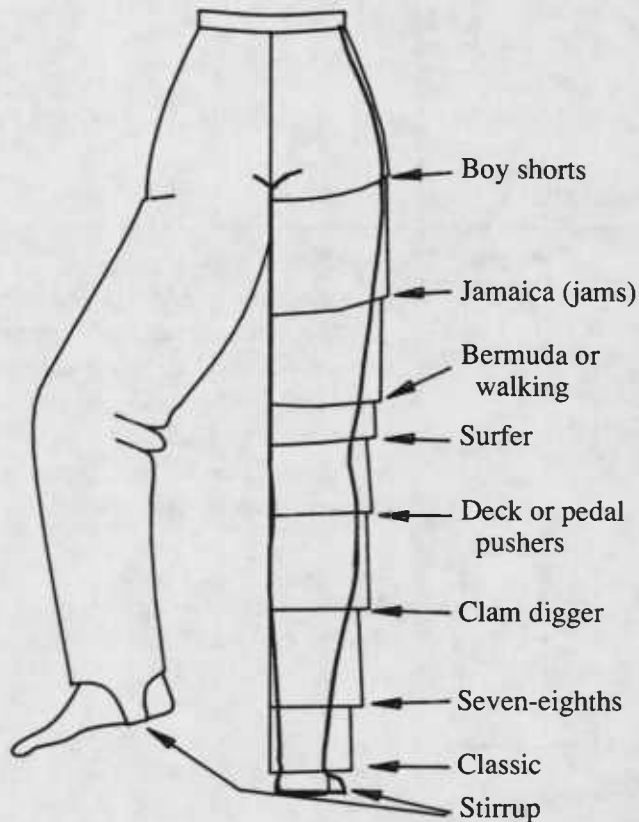
Slim-legged pant that ends several inches above the ankle.

Classic

Full-length pants, usually with center front zipper closing, fitted at the waist with darts or pleats. (Also called **trousers**.)

Stirrup

Narrow pants which have an extension worn under the foot.



Pants from fitted to full



Stretch

Body-conforming pants made from knitted stretch fabric. May be held in place by stirrup.



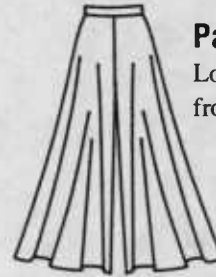
Straight

Slim-legged pant with circumference of leg hem less than 18 inches. (Also called stovepipe pants.)



Ankle

Slim pants that are ankle length. Slim look comes from fitting or from knitted fabric.



Palazzo

Long-length pants with very wide flare from hipline to hemline.



Tapered

Ankle-length pants that become narrower near hem.

Combinations of wide and narrow



Baggies

Pants that are wide at the hip and narrow at the ankle. Width at the waist and hip may be from gathers or pleats. (Also called **peg leg** or **peg-top pants**.)



Parachute

Pants with zipper on outside of legs from hem up to mid-calf to give tight fit at ankles. Zippered pockets may be placed at side of leg and on hips.



Jodhpurs

Riding pants with drop front or zipper closing, rounded flare at thighs and narrow legs straight-cut below the knee. Variations called **hunt breeches** or **riding breeches**.



Boot-cut

Pants or jeans cut wide enough at the hem to be worn on outside of western boots.



Bell bottoms

Fitted at the waist, flare from the knee to hemline on both outer and inner seams. (Also called **flare legs** or **flared pants**.) Variation with exaggerated flare is called **elephant bell**. Variation with double-button front opening and lacing at back waist called **sailor pants**.

Other pant styles



Bib or bib-top

Pants with rectangular piece attached at waist and held with shoulder straps. Bib piece may have pockets. (Also called **overalls**, **suspenders**, or **painter's**. Children's variation called **crawlers**.)



Knickers

Tailored knee length pant with fullness gathered into a band just below the knee. (Also called **knickerbockers**.)



Harem

Very full pants gathered at waist and ankle. (Also called **shalwar**. Knee length are called **Zouave**.)



Toreador

Tight-fitting pant that ends just below knee and usually has braid trim down the sides.



Jeans

Close-fitting pants with western pockets in front, yoke and patch pockets on back. Usually made of denim. (Also called **dungarees**, **blue jeans**, **Levis**, **Wranglers**, or other brand names.)



Jumpsuit

Combination of pants and shirt or blouse in one piece.



Western

Low-waisted slim pants with jeans-style fitting and pockets.

Index

- A**
- A-line dress, 26
 - A-line skirt, 37
 - Above-the-knee length skirt, 36
 - Accordion pleat, 39
 - Angel sleeve, 13
 - Ankle pants, 41
 - Anorak jacket, 32
 - Ascot collar, 8
 - Asymmetric dress, 27
 - Asymmetric neckline, 5
 - Athletic shirt, 24
 - Award sweater, 25
- B**
- Back-wrap dress, 28
 - Baggies pants, 41
 - Ballerina length skirt, 36
 - Balloon skirt, 37
 - Balloon sleeve, 15
 - Balmacaan coat, 34
 - Band collar, 7
 - Band cuff, 17
 - Banded neckline, 6
 - Banded pants or skirt, 35
 - Bandless pants or skirt, 35
 - Bare-midriff blouse, 21
 - Barrel cuff, 17
 - Barrel sleeve, 14
 - Barrymore collar, 10
 - Baseball jacket, 30
 - Basic dress, 27
 - Bateau neckline, 4
 - Bathrobe dress, 28
 - Battle jacket, 31
 - Batwing sleeve, 16
 - Bell bottom pants, 42
 - Bell boy jacket, 30
 - Bell skirt, 37
 - Bell sleeve, 14
 - Bellows pocket, 18
 - Below mid-calf length skirt, 36
 - Below-the-knee length skirt, 36
 - Ben Casey collar, 7
 - Bermuda collar, 10
 - Bermuda shorts, 40
 - Bertha collar, 11
 - Besom pocket, 19
 - Bib blouse, 23
 - Bib collar, 12
 - Bib neckline, 6
 - Bib pants, 42
 - Bib-top pants, 42
 - Big shirt, 21
 - Bishop collar, 11
 - Bishop sleeve, 14
 - Blazer jacket, 31
 - Blouson blouse, 21
 - Blue jeans, 42
 - Boat neck neckline, 4
 - Body blouse, 21
 - Body shirt, 21
 - Bolero jacket, 29
 - Bomber jacket, 31
 - Boot-cut pants, 41
 - Bouffant skirt, 37
 - Bound pocket, 19
 - Bow collar, 7
 - Box jacket, 29
 - Box pleat, 39
 - Boy shorts, 40
 - Boyfriend shirt, 21
 - Bracelet length sleeve, 13
 - Breast pocket, 19
 - Bubble skirt, 37
 - Built-up neckline, 6
 - Bush jacket, 31
 - Buster Brown collar, 10
 - Bustier blouse, 21
 - Butterfly collar, 11
 - Butterfly sleeve, 14
 - Button-down collar, 10
 - Button-tab sleeve, 14
 - Buttonhole pocket, 19
 - Byron collar, 10
- C**
- Caftan dress, 26
 - Camisole blouse, 21
 - Camisole neckline, 6
 - Cap sleeve, 13
 - Cape, 33
 - Cape collar, 11

Cape sleeve, 16
Capri pants, 40
Car coat, 33
Cardigan jacket, 30
Cardigan neckline, 4
Cargo pocket, 18
Cascade collar, 12
Cavalier cuff, 17
Chanel jacket, 29
Chelsea collar, 9
Chemise dress, 26
Chesterfield coat, 34
Chinese collar, 7
Chinese jacket, 30
Choir-boy collar, 11
Choker collar, 7
Choli blouse, 21
Chubby jacket, 30
Circle skirt, 37
Circular cap sleeve, 15
Circular ruffle collar, 12
Circular skirt, 37
Clam digger pants, 40
Classic pants, 40
Clerical collar, 7
Cloverleaf lapel, 9
Coachman coat, 33
Coat dress, 27
Cocktail length skirt, 36
Collars, 9
Continental pocket, 20
Contour pants or skirt, 35
Convertible collar, 9
Coolie coat, 30
Cossack collar, 7
Cowboy shirt, 23
Cowl collar, 8
Cowl neckline, 6
Crawlers pants, 42
Crew neckline, 8
Crew sweater, 24
Crew-neck sweater, 24
Cropped pants, 40
Cropped top, 21
Crotch length jacket, 29

Crystal pleats, 39
Culotte dress, 28
Culotte pants, 38
Culotte skirt, 38

D Deck pants, 40
Décolleté neckline, 5
Dirndl skirt, 37
Divided skirt, 38
Dog's ear collar, 11
Dolman sleeve, 16
Double collar, 12
Double welt pocket, 19
Double-breasted jacket, 30
Draped dress, 28
Draped skirt, 38
Drawstring neckline, 6
Drawstring pants or skirt, 35
Drop shoulder, 13
Drop waist dress, 27
Duffle coat, 33
Dungarees, 42

E Eisenhower jacket, 31
Elasticized waist dress, 27
Elbow-length sleeve, 13
Elephant bell pants, 42
Empire dress, 27
Epaulet sleeve, 16
Eton jacket, 31
Evening length skirt, 36

F Faced pants or skirt, 35
Fanny sweater, 24
Fitted dress, 27
Fitted sleeve, 14
Flange blouse, 21
Flap pocket, 18
Flapper dress, 27
Flare legs pants, 42
Flared pants, 42
Flared skirt, 37
Flight jacket, 31
Flip-tie collar, 8
Float dress, 26
Floor length skirt, 36

Florentine neckline, 4
Fly-away jacket, 29
Formal length skirt, 36
French cuff, 17
Front hip pocket, 20
Full skirt, 37
Funnel collar, 8
Funnel neckline, 6

G Gathered neckline, 6
Gathered skirt, 37
Gaucho pants, 40
Gaucho skirt, 38
Gauntlet cuff, 17
Godet skirt, 38
Gored skirt, 37
Granny skirt, 38
Gypsy blouse, 22
Gypsy neckline, 6

H Hacking pocket, 19
Half-moon pocket, 19
Halter neckline, 5
Handwarmer pocket, 18
Harem pants, 42
Hemlines, 36
Henley top, 25
High rise pants or skirt, 35
Hip hugger pants or skirt, 35
Hipbone length jacket, 29
Hipsters pants, 35
Hoop skirt, 37
Horseshoe neckline, 4
Hot pants, 40
Hunt breeches, 41

I In-seam pocket, 19
Insulated jacket, 31
Inverted pleats, 39

J Jabot collar, 12
Jacket lengths, 29
Jamaica shorts, 40
Jams, 40
Jeans, 42
Jewel neckline, 4
Jodhpurs pants, 41

Johnny collar, 9
Juliet sleeve, 15
Jumper dress, 27
Jumpsuit pants, 42

K Kangaroo pocket, 18
Key pocket, 18
Keyhole neckline, 5
Kick pleat, 39
Kilt skirt, 38
Kimono dress, 28
Kimono sleeve, 16
Knee length skirt, 36
Knickerbockers pants, 42
Knickers pants, 42
Knife pleats, 39
Knit cuff, 17

L Lantern sleeve, 15
Lapel, 9
Lapped sleeve, 15
Leg-o'-mutton sleeve, 15
Leg-of-mutton sleeve, 15
Letter sweater, 25
Levis, 42
Long length skirt, 36
Long sleeve, 13
Low-slung pants, 35
Low-torso dress, 27
Lower-calf length skirt, 36

M Mackinaw jacket, 32
Mandarin collar, 7
Mandarin jacket, 30
Mandarin sleeve, 16
Mao jacket, 30
Medic collar, 7
Melon sleeve, 15
Micro-mini skirt, 36
Mid-calf length skirt, 36
Midriff top, 21
Middy collar, 11
Midi skirt, 36
Mini skirt, 36
Moat collar, 7
Mock-turtle collar, 8
Morning glory skirt, 37

N Nautical collar, 11
Nehru collar, 7
Nehru jacket, 30
Norfolk jacket, 31
Notched collar, 9
Notched lapel, 9

O Off-the-shoulder neckline, 5
One-shoulder dress, 27
One-shoulder neckline, 5
Overalls, 42
Overblouse, 21
Oversized blouse, 21

P Painter's pants, 42
Palazzo pants, 41
Panel pant dress, 28
Panel pant skirt, 38
Pant dress, 28
Pant lengths, 40
Pantgown, 28
Pantshift, 28
Pantskirt, 38
Parachute pants, 41
Parka, 31
Patch pocket, 18
Pea coat, 31
Pea jacket, 31
Peaked lapel, 9
Peasant blouse, 22
Peasant neckline, 6
Peasant sleeve, 16
Pedal pushers pants, 40
Peg leg pants, 41
Peg-top pants, 41
Peg-top skirt, 38
Pegged skirt, 38
Pencil dress, 26
Peplum blouse, 21
Petal sleeve, 15
Peter Pan collar, 10
Pierrot collar, 12
Pilgrim collar, 11
Pilot coat, 31
Pin collar, 10
Platter collar, 11

Pleated skirt, 39
Pleat styles, 39
Pleats, 39
Plunging neckline, 5
Poet's collar, 10
Polo coat, 34
Polo top, 25
Poncho, 33
Poor boy sweater, 24
Portrait collar, 7
Prairie skirt, 38
Princess coat, 33
Princess dress, 26
Puff sleeve, 15
Puffed sleeve, 15
Pull-on pants or skirt, 35
Pullover blouse, 22
Puritan collar, 11
Push-up sleeve, 13
Pyramid coat, 34

R Rabat collar, 7
Raglan sleeve, 16
Rajah jacket, 30
Reefer coat, 34
Revers, 9
Riding breeches, 41
Ring collar, 7
Roll-up cuff, 17
Roll-up sleeve, 14
Rolled collar, 9
Roman collar, 7
Rule of thumb jacket length, 29
Russian collar, 7

S Sabrina neckline, 5
Sack dress, 26
Saddle sleeve, 16
Safari jacket, 31
Safari shorts, 40
Sailor collar, 11
Sailor pants, 42
Sarong skirt, 38
School sweater, 25
Scoop neckline, 4
Scooter skirt or pants, 38

Set-in sleeve, 14
Seven-eighths pants, 40
Seven-eighths length jacket, 29
Shalwar pants, 42
Shawl collar, 12
Shearling jacket, 32
Sheath dress, 26
Sheath skirt, 37
Shell blouse, 22
Shift dress, 26
Shirt, 23
Shirt collar, 10
Shirt dress, 27
Shirt sleeve, 14
Shirtwaist dress, 27
Short shorts, 40
Short sleeve, 13
Shrink sweater, 24
Side seam pocket, 19
Single cuff, 17
Single-breasted jacket, 30
Singlet, 24
Skating skirt, 37
Ski jacket, 31
Ski sweater, 24
Skimmer dress, 26
Skivvy top, 25
Skort skirt or pants, 38
Slash pocket, 19
Sleeve lengths, 13
Slicker coat, 34
Slim skirt, 37
Slip-on blouse, 22
Slit neckline, 4
Slit pocket, 19
Slit skirt, 39
Slot pocket, 19
Smock blouse, 21
Smoking jacket, 32
Spencer jacket, 32
Split skirt, 38
Spread collar, 10
Square neckline, 4
Square-dance skirt, 38
Squaw skirt, 38

Stadium coat, 33
Stand pocket, 19
Stand-up collar, 7
Stirrup pants, 40
Stock-tie collar, 8
Stole, 33
Stovepipe pants, 41
Straight pants, 41
Straight ruffle collar, 12
Straight skirt, 37
Strapless neckline, 5
Street length skirt, 36
Stretch pants, 41
Suburban coat, 33
Suit sleeve, 14
Sunburst pleats, 39
Sundress, 27
Surfers pants, 40
Surplice blouse, 22
Surplice dress, 28
Surplice neckline, 5
Suspenders pants, 42
Swallow-tailed collar, 10
Sweater set, 22
Sweatshirt, 24
Sweetheart neckline, 5
Swagger coat, 34
Swing coat, 34
Swing skirt, 37

T T-shirt, 24
T-shirt dress, 24
Tab collar, 10
Tailored blouse, 23
Tailored shirt sleeve, 14
Tank top, 24
Tapered pants, 41
Tennis sweater, 24
Tent coat, 34
Tent dress, 26
Three-quarter length jacket, 29
Tiered skirt, 38
Toga dress, 27
Toggle coat, 33
Toreador jacket, 29
Toreador pants, 42

Torso blouse, 22
Trapeze dress, 26
Trapeze jacket, 29
Trench coat, 34
Trousers, 40
Trumpet skirt, 37
Tube top, 21
Tunic blouse, 22
Turned down collar, 9
Turtleneck collar, 8
Tuxedo blouse, 23
Tuxedo collar, 12
Twinsset blouse, 22
Two inches below hip length jacket, 29
Tyrolean jacket, 30

U U neckline, 4
Umbrella pleats, 39
Unstitched pleats, 39

V V neckline, 4
Victorian collar, 7s

W Waist length jacket, 29
Walking shorts, 40
Wallace Beery top, 25
Wedding-band collar, 7
Wedge dress, 26
Welt pocket, 19
Western jacket, 32
Western pants, 42
Western pocket, 20
Western shirt, 23
Windbreaker jacket, 31
Wing collar, 7
Wranglers pants, 42
Wrap blouse, 22
Wrap coat, 34
Wrap dress, 28
Wrap skirt, 38

Y Yoke neckline, 6
Yoke pants or skirt, 35
Yoke pocket, 19

Z Zhivago collar, 7
Zouave pants, 42

For further reading

Calasibetta, C.M. (1986). *Essential Terms of Fashion: A Collection of Definitions*. New York: Fairchild Publications.

Calasibetta, C.M. (author), Goble, E.S. and Davis, L. (eds.). (1975). *Fairchild's Dictionary of Fashion*. New York: Fairchild Publications.

Davis, M.L. (1980). *Visual Design in Dress*. Englewood Cliffs, New Jersey: Prentice-Hall, Inc.

Tranquillo, M.D. (1984). *Styles of Fashion: A Pictorial Handbook*. New York: Van Nostrand Reinhold Company.

Oregon State University Extension Service publications

To order this publication or those listed below, enclose the amount shown for each plus shipping and handling. Be sure to include the publication's title and series number. If your order is \$2.50 or less, add 25¢ for shipping and handling; if it's more than \$2.50 but less than \$100,

add 15% for shipping and handling (for orders over \$100 or for quantity orders, call 503-737-2513 for a price quote).

Mail your order to Publications Orders, Agricultural Communications, Oregon State University, Administrative Services 422, Corvallis, OR 97331-2119.

—EB 838, *Create the Look You Like — With Line*, 25¢

—EC 1220, *Looking Your Professional Best*, 75¢

—EC 1285, *Fashion: Analysis and Adoption*, 50¢

—EC 1245, *Insulated Coats and Jackets for Men and Women*, \$1.25

—EC 1246, *Rainwear for Men and Women*, \$1.00

—PNW 301, *Actionwear: Clothing for Fitness/Choosing a Sport Bra*, 25¢

—PNW 302, *Actionwear: Clothing for Fitness/Bicycle Wear*, 25¢

—PNW 303, *Actionwear: Clothing for Fitness/Running and Jogging*, 25¢

—PNW 304, *Actionwear: Clothing for Fitness/Socks*, 25¢

—PNW 305, *Actionwear: Clothing for Fitness/Swimwear*, 25¢

—PNW 306, *Actionwear: Clothing for Fitness/Visibility*, 25¢



No endorsement of named products is intended, nor is criticism implied of similar products that are not mentioned.

Extension Service, Oregon State University, Corvallis, O.E. Smith, director. Produced and distributed in furtherance of the Acts of Congress of May 8 and June 30, 1914. Extension work is a cooperative program of Oregon State University, the U.S. Department of Agriculture, and Oregon counties. Oregon State University Extension Service orders educational programs, activities, and materials without regard to race, color, national origin, sex, age, or disability as required by Title VI of the Civil Rights Act of 1964, Title IX of the Education Amendments of 1972, and Section 504 of the Rehabilitation Act of 1973. Oregon State University Extension Service is an Equal Opportunity Employer.