

# Augusta Auctions



Holiday Vintage, Couture & Textile Auction

---

Wednesday - November 18, 2020

## Holiday Vintage, Couture & Textile Auction



### 1: SILK SATIN WEDDING GOWN, c. 1855

USD 800 - 1,200

Ivory silk satin wedding ensemble c/o off the SH, box pleated puff sleeve bodice w/ piping at armhole & seams, CB closure w/ large self-covered buttons, trained skirt w/ asymmetrical left to right fan pleated ribbon appliqué & to hem & detachable W band w/ puffs & tabs edging in pleated fan ribbon appliqué, original interior padding, including rare back rib cage pads, c. 1855, bodice B 35", W 21.75", L 10", skirt W 20", L 40"-86.5", detachable bow W 21.75", (tiny scuffs, tiny dark dots in lap, light stains to train, bow W band stiff, wear spots around closures) excellent.

---



### 2: SILK CORSELET & WEDDING BONNET, c. 1855

USD 300 - 500

1 blue silk taffeta corselet, CF lace closure w/ thread eyelet over boned edge, deep V point at CF & CB, upper edge finished w/ double box pleated ruffle w/ pinked edge, part of wedding trousseau, seams & darts w/ boning, lockstitch mm, B 31", W 23" L 6"-12", (light discoloration marks throughout, 1 eyelet missing, lacing fraying, few worn spots at lacing) good; 1 wedding bonnet of cream silk velvet elaborately decorated, wax filled faux pearls, crystal seed beads & chatoyant short bugle beads, leaf patterned trim w/ pearls to brim, black velvet hairband under front brim, label "Mme. Virot, Paris, 12 Rue de la Paix", circumference 19.25", (minor bead loss/damage, net ties damaged, misshapen) good.

---



### 3: CISELE VELVET AFTERNOON GOWN, c. 1883

USD 400 - 600

2-pc gown w/ additional bodice: afternoon bodice in burgundy cisele velvet on satin ground w/ all over maple leaf motif, CF needlework ball button closure, shaped 2-pc fitted sleeve w/ open cuff, 4 tab weighted back bodice over bustle, vertical knife pleated walking length underskirt in ribbed silk w/ CF panel in same cisele velvet edged w/ pennant tabs, B 34", W 24.5", L 20.5"-28.5", skirt W 25", L 40", (5.5" repair spanning both sides CF buttons, several reinforced tears right side of button band, skirt lining damaged, tiny wear spots in seat & lap) good; t/w material from entirely unpicked overskirt & short sleeved bodice in same fabric.

---



### 4: LINGERIE GOWN, c. 1907

USD 300 - 500

2-pc cotton lawn lingerie gown, bodice yoke w/ vertical ruching & lace inserts at front, back, SH caps & lower fitted sleeve, tiered double ruffle edged w/ cream silk ribbon layered over panel to front, back & upper sleeves, trained skirt w/ tiered self-ruffles, horizontal at front & dipping to lower back cascade & into train, B 32.5", W 28", L 17", Skirt W 24", L 42.5"- 59", (1" seam opening at CF & 1.75" at sleeve, 1.5" repair at CB lace panel, light staining across train, 0.75" tear at right above hem) good.

---



### 5: PATTERNED SILK VISITING GOWN, c. 1907

USD 300 - 500

2-pc visiting gown of patterned silk in white fine lozenge & squiggle motif on blue ground, lace covered bodice yoke w/ high standing collar, trimmed w/ gathered B & W ribbon in serpentine arrangement, bodice front gathered into narrow knife pleats below yoke & at W for modest monobosom w/ pleated silk chiffon, faux jabot, fitted shaped sleeve w/ 3 rows of triple tucks at upper arm, cuffs w/ lace & ribbon appliqué, lace & ribbon trim to double tiered skirt hem, B 29", W 24", L 17", skirt W 24", L 39.5-49", (lining shattering & shedding, missing & loose hooks & eyes at waistband, large faded spots, pulls to fabric in sleeves, stabilizing repairs to underskirt) fair.

---



### 6: RARE LADIES DRESS REFORM TROUSERS, c. 1870

USD 800 - 1,200

Natural linen pantaloons gathered into W yoke band, open at Hs w/ button closures & deeply gathered across CB w/ button attachments for upper part of garment, narrow early elastic band at ankle, W 22", inseam 24", rise 16.5", cuff 22", (cuffs drawstrings worn or broken, group of tiny stains right SS, wear to buttonholes) very good. From the Collection of Karen Augusta.

---

## Holiday Vintage, Couture & Textile Auction



### 7: SILK VELVET & LAMÉ EVENING COAT, c. 1918

USD 400 - 600

Emerald green silk velvet evening coat w/ gold lamé rose, swag & pseudo gothic motif, velvet front gathered panels to cowl neck & gathered, draped velvet cuff, entirely lined in moss green silk velvet, label "Louis & Co., Paris" & "Lewis, Philadelphia", B 44", L 46.5", (1" hole to lining at armhole, velvet w/ discoloration & a few worn areas, few pulls to lamé, left cuff untacked at inner wrist) very good.



### 8: TWO LAMÉ EVENING WRAPS, MID 1920s

USD 400 - 600

1 shawl w/ primrose pattern overprinted on black silk satin ground w/ silver lamé floral pattern & wide silver lamé borders, 59.5" x 50", (areas of tarnish in bands & spots); 1 gold lamé capelet w/ geometric band, leaf & spot motif in silver lamé, over printed w/ red, black & yellow swirls on eau de nil ground, gathered into extended lamé upper edge into CF tie closure, broad lamé borders to other edges, 59.5" x 52", (few small light stains, border tarnished) both good.



### 9: SILK SHANTUNG DUSTER, c. 1924

USD 300 - 500

1 silk shantung duster w/ richly colored 19th C Gujarat mirrorwork embroidery applied to collar, cuffs, pockets & hem, bandhani lining, B 39", L 43", (light staining throughout, wear to white embroidery at hem, 0.75" seam opening right SH) good.



### 10: ONE CHAPAN & ONE CHERPI, TURKMENISTAN, LATE 19TH-EARLY

USD 300 - 500

Both w/ tablet woven borders & inserted contrasting underarm godets: 1 crimson chapan w/ woven stripes & hand embroidered neckline, Turkmenistan, early 20th C, CH 47.5", L 45.5", (0.75" tear at CB seat) good; 1 green Cherpi elaborately hand embroidered at neckline, CF opening & hem, contrasting applied crimson cuffs, Turkmenistan, 19th C, CH 50", L 45.5", (stains to lining esp. at seat & lap) very good.



### 11: LADIES SUMMER ROBE, CHINA, EARLY 20TH C

USD 300 - 500

Ivory patterned silk in lattice & medallion pattern w/ ombré blue floral embroidered bands edged w/ black satin at neck, closure, cuffs & hem, satin embroidered in stylized bird, floral & butterfly motifs, cast brass button closures, early 20th C, possibly tourist trade, CH 54", L 49.5", (trim worn at collar, left CH stain & hole, discoloration throughout, 4.5" seam opening right underarm, tear to hem CF, seam opening to trim at right hem) fair.



### 12: TWO BONNIE CASHIN WORN SUMMER DRESSES, AMERICA, 1950-52

USD 300 - 500

Both from the personal collection of Bonnie Cashin & labeled "Bonnie Cashin Designs": 1 pink gingham summer dress w/ stylized Chinese collar w/ bow ties to fitted W, neck, W & closed edged w/ bias cut self-fabric & multiple rows of mm stitching, full skirt tightly gathered into narrow, fitted W band, B 34", W 22", L 45", (0.25" repair & light staining to right SH, tiny hole back left SH) good-very good; 1 tattersall pattern in white on grey ground saree fabric w/ embroidered edging manipulated for use on square cut neckline, W band to tie closure & hem, B 36", W 23", L 42.5", (label detaching, 0.5" seam opening CB) very good.



### 13: TWO BONNIE CASHIN ENSEMBLES, AMERICA, 1960-1969

USD 300 - 500

All label "Sills, a Bonnie Cashin Design": 1 set w/ faux astrachan barrel coat w/ orange leather band collar, cuff & CF W tie, CF brass toggle closures & oversize D-shaped pockets, B 67", L 39", (leather lightly worn) very good, matching orange wool jersey high mock turtleneck sweater dress, 1960-1966, B 40", W 36.5", L 41", (few tiny snack CF & back hem) very good; 1 Schiaparelli pink patterned boucle A-line coat w/ leather wide band collar, attached belt extending into tabs for tie CF closure & cuffs, B 42", W 40", L 38.5", (snaps scratched & tarnished, 1 pull to seat) very good, matching double knit wool jersey sheath w/ mock turtleneck & leather tie belt, 1966-1969, B 40", W 36", L 39", (0.25" hole left SH & at left B, tiny snacks throughout) good.

## Holiday Vintage, Couture & Textile Auction



### 14: ADRIAN COCKTAIL SHEATH, AMERICA, c. 1948

USD 400 - 600

1 black crepe dress, scoop neckline w/ attached & draped collar encrusted w/ over sized fish scaled gold sequins, over sequin encrusted bodice w/ raised midriff of dark charcoal grey crepe & narrow black crepe skirt, label "Adrian Original", B 41", W 28", L 43", (loose sequins & light sequin loss, 0.25" hole left of CB zip, few visible hem stitches CB) good.



### 15: TWO LAMÉ EVENING COATS, EARLY 1920s

USD 400 - 600

1 w/ stylized floral & foliate motif in gold lamé on satin ground overprinted w/ tri-lobed swimming forms interspersed w/ parametrium shaped motifs, dolman sleeves, lined in celadon green silk, B 60", L 43", (small pulls to lamé throughout, small worn areas esp. left sleeve, (collar lining damaged, repair to lining right side, stains to lining & light 1.75" stain at seat) good; 1 w/ dense multi-form geometric & stylized floral gold lamé ground, over printed w/ richly colored parasol motif, convertible collar, turn back cuff, B 45", L 40", (pulls, light stains to lining, 2.5" repair CB collar seam, 4" tear & repair right SH blade seam) good.



### 16: TWO BEADED OR SEQUINED PARTY DRESSES, 1920-1930s

USD 300 - 500

1 grey georgette heavily beaded with black bugle beads in vermicelli pattern w/ beaded SH straps & looped iridescent bugle bead fringe to straight front neckline w/ V-plunge at CB, CB zip, early 1930s, B 34", W 32", L 39.5", (slight bead & fringe loss, slip N/I) very good; 1 black net gown w/ black & blue gel sequins in cascade motif, horizontal tuck at CF low W & gathered at H for drape, snap closure at left SS & SH, c. 1928, B 42", W 42", L 42"-45", (8" seam opening left SS, significant sequin loss esp. at back left SH & back W, slip N/I) fair.



### 17: TWO SILK VELVET EVENING WRAPS, 1910s & 1930s

USD 400 - 600

1 sapphire blue silk velvet evening cape slender draped collar w/ gathered & inserted front SH fan detail, 3 large swirls embroidered in ombre grey to blue silk & multi colored French knots at center, blue silk crepe de chine lining ruched along neckline, 1930s, L 50", (tiny-small holes in lining at neckline) very good; 1 cerise panne velvet cocoon coat w/ broad draped collar, W gathers into draped faux over cape, dolman long sleeve w/ gathered cuff, single CF oversized hook closure, 1910s, B 88", L 50", (2.75" seam opening right cuff, unpicked stitching around midriff, 0.75" line w/ missing velvet at right B, patch of wear CB) fair.



### 18: KOSUKE TSUMURA & ISSEY MIYAKE OVERCOATS, JAPAN,

USD 300 - 500

1 purple/black survival parka w/ vertical zipper compartments throughout including sleeves & back of hood, lined in black soft broadcloth, label "Final Home", B 48", L 42", (paint chipping CF zip pull) modern, very good; 1 coat in crumpled into random permanent pleats w/ CF button closure, front patch pocket w/ single button closure, original storage bag, 1985-1993, label "Issey Miyake Permanente", B 58", L 53", excellent.



### 19: TWO ISSEY MIYAKE COATS, JAPAN, 1980s & MODERN

USD 300 - 500

Both labeled "Issey Miyake": 1 cotton blend coat in woven warp intermittent stripe finished w/ narrow fringe at both edges w/ cross over button front, slit pockets finished w/ striped border, diagonal back panel draped from right SH to cross over back button closure, 1980s, B 68", L 44", (tiny spot stains throughout) very good; 1 black SH cape in wool blend w/ notched collar, CF photo leaf print button closure, arm slits, navy cotton right SH drape to back & front gathered & pleated cascade at left front SH, SH-SH 18.5", L 22.5"-37.5", (scratch to middle button) very good-excellent.

## Holiday Vintage, Couture & Textile Auction



### 20: REI KAWAKUBO, YOHJI YAMAMOTO GARMENTS, JAPAN, 1980s &

USD 300 - 500

2-pc black worsted wool twill ensemble c/o complex gathered & pleated fan shaped bodice w/ deeply pleated midriff into let out pleats for full hem & cut edged freying knot bow to CF, asymmetrical ankle length skirt w/ narrow raw edged fringe on the bias, label "Rei Kawakubo", bodice B 38", W 36", L 35", skirt W 28", L 37", (fraying probably intentional) very good; 1 deadstock silk crepe dress w/ knitted ivory panel insert printed in birds & tri-colored spheres in blue, red & yellow, structure gathered over roll across front B & deep scoop atback, single adjustable SH strap, original tags & label "Yohji Yamamoto", B wrap up to 44", L 37", excellent.



### 21: TWO COMME DES GARCONS JACKETS, JAPAN, MODERN

USD 300 - 500

All label "Comme des Garçons": 1 black synthetic architectural blazer geometrically pieced w/ asymmetrical front opening, B 51", L 18"-22", (care instruction tag cut out, faint marks left side of B) very good; 1 black ladies blazer w/ layered & scalloped petal lapels gathered to oversized floral printed net flounce at left side, CF button closure, inset tabbed H pockets, B 37", L 21", excellent; t/w brown jacket, B 50", L 21"-25"



### 22: COMME DES GARCONS ENSEMBLE & BUM BAG SKIRT, JAPAN,

USD 300 - 500

2-pc brown ensemble c/o sleeveless top w/ large & small circles distributed on symmetrical net grid shaped darts at back as exterior decoration, extended hanging SS panels & skirt of pleated length of fabric to wrap & pin as skirt to individual taste, label "Comme des Garçons", B 69", L 24.5"-27.5", skirt W wrap up to 37", L 33"; excellent; 1 wool Bum Bag skirt in multicolored striped banding in various weave structures, bias & pleated CF shaped to create bum bag w/ zippered pocket, slender cow hide W belt extending to CB bag, c. 1997, label "Junya Watanabe, Comme des Garçons", H 34", W24.75"-29.5", L 45.5", (belt cracking, right rear belt loop broken) good.



### 23: BONNIE CASHIN FOUR PIECE ENSEMBLE, AMERICA, 1960-1963

USD 300 - 500

4 piece ensemble c/o pony hair jacket, brown wool swing coat, shell & blouse, all label "Sills, a Bonnie Cashin Design": 1 spotted pony hair jacket w/ brown leather trims at collar, cuffs, hem & CF double ties, inset H & horizontal back W pockets all bound in brown leather, B 40", L 25.5", (leather ties worn, wear at SS) very good; 1 brown wool swing coat of brown wool jersey lined in pink wool jersey, edged in brown leather, oversized D-shaped H pockets, B 47", L 39", excellent; 1 bateau blouse neckline w/ brown leather trims & straight skirt of brown wool jersey, B 38", L 24.5", excellent; 1 straight skirt, W 23", L 25", excellent.



### 24: BONNIE CASHIN DRESS & COAT SET, AMERICA, 1955-1960

USD 300 - 500

Wool & mohair boucle & randomized basket weave w/ cream leather bindings at all edges & label "Sills & Co., A Bonnie Cashin Design": coat of cream boucle lined in cream & mottled black boucle w/ shawl collar, CF cream leather ties, full 3/4 length dolman sleeves, inset D-shape H pockets, B 48", L 38", (belt ties worn, 1" & 1.5" area missing weft to left collar at SH); sleeveless tunic dress of cream & mottled black boucle w/ CF button closure & SS slit pockets, B 36", W 34", L 38", 1955-1960, (2 light stains CF left B, 2.5" x 1.5" area missing weft at seat) both good.



### 25: THREE BONNIE CASHIN OVERCOATS, AMERICA, 1958-1972

USD 300 - 500

All w/ leather bindings & brass oval turn lock closures, label "Sills & Co., A Bonnie Cashin Design": 1 double faced heathered grey & brown brushed wool cape w/ convertible collar, CF, SS arm slits & hem bound in brown leather, 1963-1970, L 36.5", SH-SH 18.5", (buckles worn, label detaching, two 1"x2" & 1" wear spots left CF) good; 1 black faux fur w/ scoop neck, long sleeves, tie belt, raglan sleeves, flap tab pockets, lined in black jersey & matching black leather straight skirt, 1958-1963, B 45", L 34", skirt W 26.5", L 26.5", (buckles worn, ink on label) very good; 1 pink-beige & cream double faced brushed wool poncho w/ asymmetrical Cossack collar, CF & hem bound in cream leather, 1965-1972, L 26", (snack left SH blade) very good.

## Holiday Vintage, Couture & Textile Auction



### 26: TWO BONNIE CASHIN SUEDE ENSEMBLES, AMERICA, 1952-1970

USD 300 - 500

Both label "Sills, A Bonnie Cashin Design": 1 butterscotch suede jacket lined in woven stripe cotton sateen overprinted w/ tangerine & pink, 1 princess line fitted tank top w/ snaps at SHs, 1 suede skirt lined w/ crepe, 1968-1970, coat B 40", L 24", tank B 35", L 22", skirt W 25", L 21.5", (tiny & 0.5" spot stain in jkt, tank pilling, tiny stains at skirt buckle, buckle oxidizing, stains left front H) good; 1 nutmeg brown suede jacket w/ collar, cuffs & skirt in twill plaid in greys, black & cinnamon, jacket lined in crepe, 1 matching twill skirt, 1952-1955, B 39", L 21.5", skirt W 30", L 24.5", (suede worn esp. at underarms, bands of minor fading across W, tiny light spot stains back SHs & B) good.



### 27: THREE BONNIE CASHIN LEATHER SKIRTS, AMERICA, 1952-1960

USD 300 - 500

All label "Sills & Co., A Bonnie Cashin Design": 1 blush pink 4 piece gored skirt gathered in W band w/ oversized patch pockets & inserted zip opening, agate snap closures to CF & W band, 1952-1958, W 23", L 28.5"; 1 scarlet 4 piece gored skirt gathered in W band w/ oversized patch pockets & inserted zip opening, agate snap closures to CF & W band, 1955-1960, W 24.5", L 24", (0.25" black stain inside W band); 1 taupe 7 piece gored A-line skirt w/ faux patch pockets, 1952-1957, W 28", L 31", (lining falling at hem), (all w/ imprints from hangers at W band) all good-very good.



### 28: TWO LEATHER COAT DRESSES, SAN FRANCISCO, 1960s & 1980s

USD 300 - 500

1 white leather coat dress w/ full length strong SH sleeve, zip closure at cuff & CF, elaborately pieced W front & back, 1982-1986, label "Michael Hoban for North Beach Leather", B 41", W 27.5", L 40.75", (tiny stains lap, leather scratched right SH) very good; 1 sheath dress w/ long sleeve top of pony hair w/ black leather attached skirt, roll collar w/ left side lap & flat button closures to hem, fitchet pockets, 1960s, B 34", W 31", L 38.5", (missing 1 button, leather trim worn left cuff) very good.



### 29: IRENE DAY ENSEMBLE, AMERICA, 1950-1955

USD 300 - 500

2-pc ensemble c/o double breasted boucle coat w/ set in dolman sleeves, notched collar, flapped fitchet pockets, crepe silk lining & peach wool day dress w/ long dolman sleeves, drop W w/ faux belt to H & tab at CF w/ decorative buttons, deep box pleat at CB, c. 1950-1955, label "Irene, Exclusively for Bullocks-Wilshire", coat B 44", W 41", L 41.5", (lining damaged) coat very good, lining poor, dress B 40", W 27", L 41", (dirty around cuffs, left H & W, collar missing, few tiny snack) good.



### 30: TWO DESIGNER LAMB COATS, AMERICA, 1950s & 1960s

USD 300 - 500

1 black caracul lamb flared coat w/ fox collar & hem, matching Uzbek style cap, 1960s, label "Garber's, Passaic NJ", CH 45", L 38", (fox fur lightly shedding) good; 1 grey Persian lamb coat w/ silver mink collar lined in ivory patterned silk, 1950s, CH 52", L 34.5", label "Irene", (label not original?) very good.



### 31: THREE FUR COATS, AMERICA, 1940-1950s

USD 300 - 500

1 dark grey Persian lamb jacket w/ notched collar, inset front H pockets, tomato red fine ottoman lining, 1940s, label "Habers, Morristown NJ", B 42", L 27", (lining faded); 1 black Persian lamb straight coat w/ narrow bell sleeves, brown mink collar, patterned silk satin lining, 1950s, CH 42", L 41", (lining damaged at neck); 1 black sheared beaver fur cape, 1940s, label "Mortons, Washington DC", L 24.5"-29.5", (1 closure detached & included) all very good- excellent.

## Holiday Vintage, Couture & Textile Auction



### 32: THREE BLACK DRESSES, AMERICA, MID 1950s-1967

USD 300 - 500

1 wool jersey w/ 3/4 length sleeve, scoop neckline, piped edging, dolman sleeve w/ gusset & baubles to cuffs, c. 1967, patent medallion "Webster Co.", B 39", W 25.5", L 40.5", (minor esp pilling in lap); 1, 3/4 length sleeve black silk ottoman, black velvet shirt collar & diagonal tucks over black velvet insert across over B, pellon interfacing in upper half of skirt, flared gored & pleated skirt, c. 1953, label "Sophie of Saks", B 36", W 25.5", L 43", (group of pinholes left B); 1 short sleeve cashmere w/ ribbon braid insert & faux wrap skirt, mid 1950s, B 39", W 23.5", L 39.5", (re-hemmed) all very good.



### 33: TWO WOOL DAY DRESSES, 1950s

USD 300 - 500

1 black & grey wool check w/ tucked dolman sleeves, broad inset W band, skirt shaped w/ darts & gathers into W, black silk lining, B 41", W 26", L 42", very good; 1 cocoa brown cashmere broadcloth dress w/ band collar, tiered bell shaped raglan sleeves w/ self-trimmed edging, 3 horizontal bands to midriff into small self bows at CB, China silk lining, weighted hem, handpicked talon zip & sleeves, B 35", W 26", L 42.5", (top band of trim loose left side back of ribcage, visible hem stitches) very good.



### 34: COUTURE DIOR AFTERNOON SUIT, PARIS, c. 1966

USD 400 - 600

2-pc black wool blend dress suit w/ broad Bermuda collar, CF black button closure, matching skirt w/ fitchet pockets attached to sleeveless gimp dress, S/S 1966, label "Christian Dior, Paris, 131680", jacket B 38", L 18", dress B 38.5", W 30", L 37.5", (dress pockets unfinished & open, tiny holes in gimp bodice) very good.



### 35: THREE SKIRT SUITS, AMERICA, 1960s

USD 300 - 500

1 in red & black modified waffle weave, over the H pockets w/ diagonal 3 button tab, mid 1960s, label "Saks Fifth Avenue by Ben Gershel", jacket B 39.5", W 30", L 24", skirt W 24", L 25", (label detaching) very good; 1 brown wool fleece flared jacket w/ drop SH & molded faux cord wrapped buttons, straight skirt, early 1960s, label "Robert Knox, New York", jacket B 50", L 22.5", skirt W 25", L 23.5", (tiny snack CF B & hem, 0.25" snack top left SH, fabric worn) good; 1 faux herringbone quilted black c/o fitted jacket w/ dolman sleeves, notched collar, 3/4 length sleeves, CF domed button closure, B 35", W 29", L 20.5", skirt W 24", L 25.5", (light pulling esp to W band & lapel) very good.



### 36: GIVENCHY FLORAL CHIFFON PARTY DRESS, PARIS, 1973

USD 300 - 500

Silk georgette sleeveless floor length dress in Japanese woodcut inspired florals including branches of white cherry blossoms on blue ground, w/ plunging V-neck to mirror motif piecing at CF seam, jumper inspired back bodice w/ symmetrical inserted cascading narrow panels at back W, CB zip, hook & eye & snap closure, matching triangular scarf, label "Givenchy Nouvelle Boutique, Paris" & "Bergdorf Goodman, 6-28-73", B 32.25", W 27.5", L 58", (tiny spot stain left CF clavicle, 0.5" & 0.25" hole front left strap) very good, matching scarf, 61.25" x 22.5", excellent.



### 37: LANVIN SEQUIN ENCRUSTED EVENING SHEATH, PARIS, 1970s

USD 300 - 500

Silk scoop neckline evening sheath in cosmic motif w/ crystal beaded medallions & sequined diamond centers interspersed twisted beaded ropes connecting triangular grid motifs w/ metallic beaded centers, 3/4 length sleeves, scalloped kick at CB & CB zip closure, label "Lanvin, Paris", B 36.5", W 28", L 56", (light sequin loss throughout) very good; t/w Hermes alligator handbag.

## Holiday Vintage, Couture & Textile Auction



### 38: EMILIO SCHUBERTH EVENING DRESS, ROME, 1953

USD 500 - 800

Brown silk velvet strapless bustier bodice w/ sweetheart neckline to fitted bodice & extending into Matisse paper cutout inspired vegetal tentacles over pale pink silk satin flared skirt, embroidered miniature florals w/ pink tourmaline paste prong set centers & crystal beaded petals scattered throughout & concentrated at W, CB zip closure, label "Emilio Schuberth, Roma", B 33", W 25.5", L 38.5", (probably missing belt, bead loss, staining right back & in line around hem, few pulls) good. Exhibited at 'Palazzo delle Esposizioni', July-September, 1998. Also featured in "Moda Romana dal 1945 al 1965" & "Moda Italiana, 1950-1970" by Sofia Gnoli, page 28.



### 39: WOOL ISSEY MIYAKE & MISSONI ENSEMBLES, JAPAN & ITALY,

USD 400 - 600

2-pc ensemble in teal & black Rayon & wool blend in oversized basket weave pattern, blouse w/ bateau neckline, attached batwing sleeve, attached left SH drape gathered & twisted over right H to show reverse side of fabric, skirt w/ fitted W yoke & diagonally draped over panel, label "Issey Miyake", B 56", W 41", L 28", skirt W 26", L 38.5", very good-excellent; 1 mohair & Nylon knitted dress in teal, mauve, blue & orange stripe w/ open standing collar over gathered shirtwaist deeply pleated front & back, full raglan sleeves w/ fitted cuff, skirt w/ manipulated stripe to around fitted W to let out pleats over Hs, Italy, label "Missoni", B 48", W 24"-33", L 46.5", very good.



### 40: BALMAIN & IRENE DAY DRESSES, PARIS & AMERICA, 1952 &

USD 300 - 500

Military style sheath dress w/ bodice of fine double knit cumin colored wool jersey & modified twill basket weave body in shades of brown wool, double row of decorative buttons at B, lined w/ silk crepe, c. 1952, label "Balmain, Paris", B 38", W 27", L 41.5", (hem unfinished & fraying, seam opening back right near hem, hole right underarm, spot stains front right SH, skirt lining removed & included) fair; 1 black silk crepe w/ silk satin band extending from CB over SHs, crossing & forming large oval & finished w/ knot at bottom edge CF, dolman sleeves w/ deep gusset, c. 1955, label "Irene, Exclusively for Bullocks-Wilshire", B 35", W 25", L 38.5", (tiny seam openings at SHs) very good.



### 41: TWO IRENE DAY DRESSES, AMERICA, 1947-1950

USD 300 - 500

1 cinnamon wool w/ batwing sleeve, neck opening edged w/ oversized self-covered buttons continuing down CF to W, c. 1947, label "Irene, Exclusively for Fredricks & Nelson, Seattle", B 39", W 24.5", L 48", (hook at CF W loose, missing belt) very good; 1 fine twill check wool in brown, grey & tan w/ set in dolman sleeves incorporated into B dart w/ gusset, fitted skirt w/ mirror double zigzag darts to W, back pieced in multiple Vs, 1947-1950, label "Irene, Exclusively for Jenny", B 44", W 28", L 48.5", (two 0.25" moth holes front hem & at CB, 1" repair back left SH, 0.75" repair back left SH) fair-good.



### 42: TWO DESIGNER DAY DRESSES, AMERICA, 1950-1955

USD 300 - 500

1 cream linen sleeveless sheath w/ tabbed black velvet Mickey Mouse collar, self covered buttons, patch pocket at H, shaped black velvet belt, 1950-1955, label "Hannah Troy Original", B 38", W 23.5", L 41", (belt worn & cracking, tiny hole left knee, spot stains left lapel) dress good, belt fair; 1 tan & white twill silk gingham day dress w/ broad military notched cross over collar, double row CF button closure, narrow peplum to front closure at left H & back W, 1950-1953, label "Irene, Exclusively for Ranshoffs, San Francisco", B 37", W 28", L 42", (tiny hole CB seat) very good.



### 43: TWO BLACK DAY DRESSES, 1940-MID 1950s

USD 300 - 500

2-pc black guipure lace scoop neck sleeveless dress w/ soufflé insert at neckline front & back, inserted faux belt W line, six panel flared skirt & matching fitted jacket w/ black ranch mink trimmed collar, self-covered CF button closure, mid 1950s, jacket B 35.5", W 25.5", L 19.5", dress B 35", W 27", L 40.5", (jacket fur pressed wrong way in several places, wear to buttons) jacket good, dress very good; 1 black crepe w/ inset ruched band to scoop neckline, sleeve & to circular draped H panels front & back, 1940s, label "Junior Couture", B 36", W 26", L 47", (missing belt) very good; t/w mauve skirt suit, jacket L 28", skirt W 27", L 29", (tiny pulls)



## Holiday Vintage, Couture & Textile Auction



### 44: TWO DON LOPER ENSEMBLES, AMERICA, c. 1950 & 1955

USD 300 - 500

1 black & white fine houndstooth skirt suit c/o princess seamed jacket w/ double breasted cathedral window panel at CF & self-covered button closure, flapped H pockets, turn back cuffs, fitted to W & over Hs, c. 1950, label "Don Loper", jacket B 37", L 23.5", skirt W 25", L 25.5", (moth hole left SH blade) very good; 1 silk shantung w/ blue & black rose on white ground dress, scoop neck, sleeveless, asymmetrical front & back bodice w/ decorative self-covered button at left W, c. 1955, label "Don Loper of California", B 37", W 26", L 40.5", excellent.



### 45: BEENE & BERNARD SKIRT SUITS, AMERICA, 1960s

USD 300 - 500

2-pc novelty weave wool boucle suit in shades pink, tan, brown, black & white, c. 1960, label "Harvé Benard", jacket B 37", L 22", skirt W 28", L 27", (label detaching); 2-pc black silk crepe shell & skirt, 1962-1966, label "Geoffrey Beene", jacket B 39", L 24.5", skirt W 25", L 24", both very good.



### 46: THREE PIECE ICE SKATING ENSEMBLE, 1940s

USD 300 - 500

All wool: 1 fitted bodice w/ long sleeve, strong SH, flared skirt peplum, Peter Pan collar w/ ice blue sequined loop motif, B 36", W 28.5", L 28.5", (few missing sequins), bottoms w/ elasticized leg, left side closure, W 26.5", L 13.5", (no hook at H closure), 1 fitted skull cap trimmed w/ matching sequins, circ. 21.5", all very good.



### 47: SET BEACHWEAR SETS, AMERICA, EARLY 1950s

USD 300 - 500

1 cotton printed bandeau top w/ fold down tabs at neckline in cutout animal, human & plant motif on white ground, boned bodice, B 29.5"-31", L 2.25"-6.5", (large light green stain under right B); 2-pc white cotton canvas w/large printed apple & leaf motif, halter bikini top w/ offset button closures, matching shorts w/ button down flap pocket to right front, CH 22", top L 10", W 26", bottom L 12.5", (edges of strap frayed); 1 deadstock child's bikini w/ halter top & shorts both w/ double tiered ruffles to B & below W, tags "Mayfair of Miami", CH 16"-24", W 18"-26", bottoms L 9", (hem discolored); 2-pc ensemble printed w/ fruit, berry & flower motif c/o coverup top & shorts, label "Nu Fashion", B 44", L 16", (SH w/line stain/dirt) all good-very good.



### 48: BRADLEY KNITWEAR BATHING SUIT & COAT, WISCONSIN, 1920s

USD 400 - 600

Both jacquard knitted skeletal peacock feather motif in yellow w/ orange & grey eyes on silver beige ground: 1 silk wool bathing suit w/ single button closure at left SH, attached cotton knit undershorts, B 31", W 29", L 30"-31", (few missing knit stitches CF) very good; 1 beach coat w/ fleece collar & cuffs, single abalone button closure, label "Bradley Knitwear", B 40", L 40.5", (button chipped, pulls to outer level of knitting w/ missing stitches, spot stains cuff) good.



### 49: SOUVENIR JACKETS & SKIRT, MEXICO & AMERICA, 1930-1960s

USD 300 - 500

1 circus motif skirt w/ of cream cotton twill w/ wool appliques, label "Malcolm Starr", W 26", L 29", (discoloration below W, pulls to gold trim, red pilling) good; 5 wool jackets all w/ wool appliques, embroidered elements & beading: 1 red w/ cactus, B 35", L 22", (dark spot stains throughout); 1 red w/ florals, B 37", L 27", (embroidery fraying, tiny spot stains & holes); 1 blue w/ red & white stitching, B 35", L 29.5", (embroidery fraying & pilling, stain above left pocket, 1.5" opening left SS, sequin loss back, tiny holes); 1 green, B 35", L 26.5", (2" hole above right hem, tiny holes throughout, spot stain right SH blade); 1 blue w/ orange stitching, B 36", L 24.5", (0.5" x 0.75" hole left of CF opening, seam opening back armscye) all fair- good

## Holiday Vintage, Couture & Textile Auction



### 50: POST SURREALIST NARRATIVE & DECORATIVE BLOUSES, FRANCE

USD 300 - 500

1940-1950s, 1 black w/ yin-yang beaded collar label "Morlove the Couturier Blouse", B 40", W 28", L 23", (left B dart separating); 1 ivory w/ flamingos, label "Arlene", B 40", L 21", (tiny holes across SH blades & upper CH, bottom hem slight fraying, button coating chipping); 1 black w/ Japanese garden scene, B 42", W 30", L 21", (tiny spot stains CF B, 0.25" spot stain right SH blade); 1 navy open front w/ giraffes, B 38", L 17"; 1 black w/ heart & dagger, B 36", W 24", L 21.5", (repair at left W); 1 navy crop w/ zip back, B 35", W 28", L 16"; 1 long sleeve black w/ Paris postcard top, label "Made in France", B 40", W 28", L 21", (1 tiny moth hole back right H) all good-very good



### 51: TWO CULOTTES & ONE DAY DRESS, AMERICA, 1920 & 1940-50s

USD 300 - 500

1 floral chine silk taffeta sleeveless hostess culotte w/ wide, flared legs, SS pockets, back zip closure, 1950s, label "Saks Fifth Avenue", B 40", W 28.5", L 54", (light spot stains esp right B, light fading) good; 1 printed cotton sleeveless culotte w/ scalloped asymmetrical right revere collar w/ left side wrap tie & snap closure, 1920s, label "Clara Belle Frocks", B 33", W 30", L 45.5", (tiny seam opening right armscye, few light spot stains to collar & SH) good; 1 white linen dress w/ contrasting forest green notched collar, short sleeves & wide hem band, jellybean buttons, left SS zip closure, 1940s, label "Kane Weill", B 40", W 30", L 46", (1 tiny stain back neck, glue spots left cuff, left belt loop broken & missing) good.



### 52: THREE PRINTED SUMMER OR RESORT DRESSES, 1950s

USD 300 - 500

2-pc ensemble printed w/ Egyptian motif c/o sleeveless dress w/ scoop neck & pleated skirt, matching long batwing sleeve crop jacket, B 39", W 32", L 48", (enlarged w/ panels at SS, 0.5" seam opening right W, tiny tear left W at zip) dress good, jacket very good; 1 party dress in French graphic print w/ impressionist motifs in blue & purple, glove length batwing sleeves, CF V collar w/ reverses, fitted inverted V W yoke, self belt, B 42", W 29", L 48.5", (belt stiff & cracking, 3 tiny-0.25" holes above left front hem) very good, belt poor; 1 silk bird of paradise print spaghetti strap dress w/ fitted bodice, double panel CF insert to W, label "Alfred Shaheen", B 33", W 27", L 42", (fraying at straps, 1" tear left H) good.



### 53: TWO ADRIAN MANS SHIRTS, AMERICA, 1950s

USD 200 - 400

1 black & white slub striped cotton blend shirt, left patch pocket & front SH w/ chevron inlay, MOP buttons, label "Adrian, Designs for Men" & "Miss Jackson Shop, Tulsa", CH 46", L 27.5", (label fraying) very good; 1 brown & grey wool striped shirt w/ broad border band woven w/ cream, shades of brown & fine red vertical stripe, label "Adrian, 100% Virgin Wool", CH 44", L 29", (large light stain CF W, tiny-small holes throughout, 2nd button dirty) fair.



### 54: TWO LILLI ANN DRESS JACKETS, SAN FRANCISCO, 1940-1950s

USD 300 - 500

Both label "Lilli Ann of San Francisco": 1 blue & white jacket in double ikat w/ piped, extended SH epaulet panels, piped self collar w/ inlaid cream wool crepe reverses, white CF button closure, turn back cuff, B 41", W 33", L 22.5", very good- excellent; 1 navy wool jacket w/ light pink & blue randomized threads w/ wide shawl collar, winged turn back cuffs, CF self-covered buttons, white cuffs & lapel, B 42", W 32", L 22.5", (tiny pulls to lapel, modified w/ white cuff & collar) good- very good.



### 55: BLACK CASHMERE LILLI ANN COAT, SAN FRANCISCO, 1950s

USD 400 - 600

Fitted trench coat w/ deep convertible collar, raglan sleeves, inset tab closure cuffs, inset front H pocket w/ decorative fold over buttoned tab, label "Lilli Ann of San Francisco", B 42", W 45", L 41.5", (1 button missing) excellent.

## Holiday Vintage, Couture & Textile Auction



### 56: CASHMERE LILLI ANN TULIP COAT, SAN FRANCISCO, c. 1958

USD 400 - 600

Black cashmere tulip coat w/ double tiered gathered collar, shaped & applied grosgrain ribbon W band to flat bow at CF W & at knee, long sleeve, CF self-covered buttons, pellow interfacing, label "Lilli Ann of San Francisco", B 36", W 26", L 46", (tiny white marks lower CF bow, 1" ribbon trim detaching) very good.



### 57: BEADED & PLUSH TRIMMED OVERCOAT, 1880s

USD 400 - 600

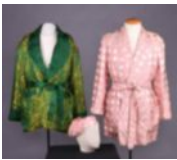
Black wool broadcloth lady's tailcoat w/ military styling, gold silk plush trim to collar, cuff, CF panel & oversized button & toggle closures, beaded black jet spiral & leaf motif w/ stylized blossoms & cascades in brown to taupe ombré glass seed beads, B 38", L 48", (velvet worn esp. at edges, seam opening back SH, top right button detaching, toggles missing from 2 frogs, bead loss esp upper back) good.



### 58: TWO SILK PAJAMAS, AMERICA & CHINA, 1930s & 1950s

USD 300 - 500

1 mans white frond patterned satin weave pajamas, CF button down shirt & drawstring W, button fly pant, label "Bullocks, Los Angeles", CH 52", L 29.5", pant W 10"-44", L 41.5", (0.25"stain underside of collar, W band cord fraying) very good; 1 claret silk satin ladies pajama set w/ stylized embroidered lotus flowers & foliate, cheongsam collar w/ wrapped fabric frog & monkey knot closures, matching pant w/ drawstring closure, B 32", L 21.5", pant W 35", L 39", (very good 0.5" repairs at CF & CB, starting to shatter at seams & collar, elastic W band shot, 1.25" repair seat inseam) good.



### 59: ONE SULKA & ONE UNLABELED MANS SMOKING ROBES, 1950s

USD 300 - 500

1 yellow & green patterned silk w/ green satin collar, cuffs & pocket tabs w/ horizontal & vertical corded quilted diamond pattern, original silk satin tie, 1950s, CH 48", L 31.5", very good; 1 pink twill silk w/ white silk satin polka dot grid, deep shawl lapels & cuffs edged in pink silk satin, large H pockets, matching Turkish tasseled cap, tie belt closure, 1950s, label "A. Sulka & Co.", CH 51", L 34", cap circ. 24.5", size 7.75, (spot stain CB W & left sleeve, cap w/ messy tassel) jacket good, cap great.



### 60: FOUR BEACON BLANKET DRESSING ROBES, AMERICA, 1930-1950s

USD 300 - 500

All cotton blend & labeled "Beacon Fabric": 1 red & white plaid w/ candy stipe cording at pockets, cuffs & lapel, label "Brent Montgomery Ward", CH 55", L 47.5", (wear to fabric throughout); 1 purple w/ diamond & polka dot Modern style pattern, corded edging to turn down lapel & cuffs, CH 48", L 48.5", (large light stain CF CH); 1 cinnamon w/ graduated squares in South Western shades, CH 52.5", L 46.5", (fabric worn throughout esp. at edges, string attaching W cord at CB pulling); 1 ombré grey w/ stylized flame motif in reds & browns, label "Genuine Ombre", CH 50", L 47", (wear throughout esp. at edges, elbows & collar, 1 missing button, replaced buttons, two 0.75" drip stains near hem, no belt) all fair- good.



### 61: FOUR MANS DRESSING ROBES, AMERICA, 1930-1940s

USD 300 - 500

1 cinnamon satin w/ graduated stripes, patch pocket, embroidered monogram at B, label "Glover World Fashions", CH 44", L 50", (light stains upper left SH & CH, small holes CB, lower back & seat, stains to seat) fair; 1 black & scarlet silk satin w/ manipulated stripe, fan & circle motif, unworn, pockets still stitched, label "The Halle Bros." & "Wise Robes of Distinction", CH 50", L 45.5", excellent; 1 twill w/ woven patterned overprinted w/ slotted rectangles & ink blotches, CH 52.5", L 52.5", (0.75" hole to right of CF, tiny holes lapel & SH blades) good; 1 claret damask w/ stylized geometrics, label "Loungewear by E & W", CH 42", L 46", (2 worn spot at left lapel small & 0.5") very good.

## Holiday Vintage, Couture & Textile Auction



### 62: FOUR MANS PAJAMAS, NEW YORK, 1940-1950s

USD 300 - 500

1 silk w/ white circles & pink interrupted stripe on navy ground, woven corded frog closures trim adapted to buttons, label "Manhattan Pajamas", CH 45", L 29", pant W 39", L 42"; 1 cotton w/ complex pattern in multiple rows of squares in salmon, blue & white, label "Saks Fifth Avenue, Made in Switzerland", CH 48", L 27", pant W 35.5", L 40", (inking on label); 1 w/ woven cream stripe & overprinted w/ stripes in shades of wine, label "NowchwÄrsche", CH 54", L 27", pant W 40", L 39", (elastic W shattered); 1 fine woven ombré stripe in shades of blue & grey, drawstring W w/ interlocking button tab front, label "Albert Leonard George, NY", CH 46", L 28.5", pant W 31", L 41", (missing W band button) all very good-excellent.



### 63: TWO DIOR & ONE SAINT LAURENT HATS, 1950-1960s

USD 300 - 500

1 charcoal grey cashmere wrapped turban w/ leather bands terminating in black domed faux crystal & bead buttons, label "Miss Dior, created by Christian Dior", circumference 22.5", size 7 1/8, very good; 1 navy straw w/ openwork brim extension & band at base of crown of crocheted straw w/ festoon to right side, band label "Christian Dior, Chapeaux, Paris, New York", circumference 21.5", size 6 3/4, (slightly misshapen) good; 1 navy blue silk surah wrapped turban w/ twisted tab festoon at CB, label "Yves Saint Laurent, Paris, New York", circumference 22.5", size 7 1/8, (slightly misshapen) good; t/w black velvet stylized toreador cap, labeled Dior reproduction w/ applied braid



### 64: THREE BLACK DIOR HATS, 1950-1960s

USD 300 - 500

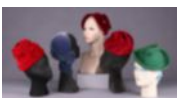
1 silk velvet pillbox set w/ top tier wrapped w/ black double faced satin ribbon to flat bow at CB w/ 2 cascading ribbon tails, label "Christian Dior, New York Inc.", circumference 21", size 6 5/8, (slightly misshapen, pinholes on label); 1 draped silk satin gathered & tied into bow knot at top & CB, over black velvet, label "Christian Dior, Chapeaux, Paris, New York", circumference 20.75", size 6.5, (very light scuffing to bows & underside of brim); 1 dome fur velvore w/ flat appliqued silk velvet ribbon to complex bow at CF, label "Miss Dior, created by Christian Dior", body "Made in Italy", circumference 21.75", size 6 7/8, (label dirty & fraying) all very good.



### 65: THREE LILY DACHÉ & ONE MR. JOHN HAT, AMERICA, 1950-1950

USD 300 - 500

1 cream fur felt w/ black felt brim stitched w/ finely tucked convertible brim, button held CF self tuck, label "Mr. John Jr.", circumference 21.5", size 6.75, Ht 5-5"-6.75", (snacks throughout) good; 1 fine woven taupe straw brimmed cloche w/ silk gingham organza ribbon, label "Lilly Daché Young Modes, Paris, New York", circ. 21.25", size 6.75, Ht 5", (crown slightly crushed) good; 1 bullseye topped narrow cylinder w/ narrow brim in black & shades of tan straw w/ yin-yang, label "Dachettes, designed by Lilly Daché", circ. 19.5", size 6 1/8, Ht 5.5", (hat misshapen) good; 1 Panama straw brimmed pork pie w/ orange grosgrain ribbon w/ flat self fringe end bows, label "Dachettes, designed by Lilly Daché", circ. 21.25", size 6.75, Ht 5", very good.



### 66: FIVE WHIMSICAL HATS, 1940-1950s

USD 300 - 500

1 densely wrapped flower pot turban of crimson velvet w/ self bow, label "Irene of New York", circ. 19.5", size 6 1/8, Ht 6", (holes in lining); 1 steel blue velvet afternoon hat w/ oversized self bow at right nape, circ. 24", size 7 3/8, Ht 4", (tiny snacks at brim, faded, slight crushing, pin tarnished); 1 dark red velvet double tabbed jester cap w/ pink sequin & bead, c. 1956, label "Filbert Orcel, Paris", circ. 22", size 7, Ht 6", (sequins damaged, 1" line of crushing left of CB); 1 red fur felt swirl shaped, label "G.E. Godfrey", circ. 19", size 6, Ht 5", (tiny snacks throughout, tiny holes in lining); 1 green felt modified tricorne, circ. 20", size 6.25, Ht 5", (few snacks to felt brim) all very good-fair.



### 67: FOUR SCHIAPARELLI HATS, PARIS & AUSTRIA, 1950s

USD 300 - 500

All label "Schiaparelli": 1 cinnamon wrapped turban w/ dusty pink silk rose, cream lace lining, circ. 22", size 7, Ht 5", (flower worn, tiny pulls) very good; 1 of black plastic ribbon manipulated into 3D roses around brim, black silk velvet ribbon detail at CB, original box, 1960s, circ. 22", size 7, Ht 5.5", (box scuffed & has dark marks) hat excellent; 1 pillbox of layered & stitched black horsehair ribbon in wave pattern w/ net veil & flat black silk velvet bow at CF, circ. 20.75", size 6 5/8, Ht 3.5", (label stained, veil torn) good-very good; 1 navy & gold straw braid manipulated & woven into undulating patterns, 1950s, "Made in Austria", circ. 22.25", size 7, Ht 5", (lining lightly stained, few gaps in weave crown) good.

## Holiday Vintage, Couture & Textile Auction



### 68: ONE EARLY MR. JOHN & THREE UNLABELED CLOCHE, AMERICA

USD 300 - 500

1 black velvet cloche w/ rhinestone trim & button accents, c. 1930, circ. 21.75", size 6 7/8, Ht 7", (rhinestones tarnished, velvet worn at seams & brim) fair-good; 1 basket woven dark tan w/ turn back brim & grosgrain ribbon fan, celluloid & rhinestone pin, 1920s, circ. 21.75", size 6 7/8, Ht 8", (ribbon stained, hat pin discolored, lining detaching) good; 1 knotted Panama style straw w/ gold & green silk velvet ribbon & silk rose, late 1930s, label "Mr. John", circ. 21.5", size 6.75, Ht 5", (flower re-pinned, internal band detached) very good; 1 black felt cloche w/ double wing petals at front & turned up at back, c. 1930, label "N. Snellenburg Co. Philadelphia", circ. 21.5", size 6.75, Ht 7", (wear inside brim at CB) very good.



### 69: FIVE FEATHERED OR RAFFIA PARTY HATS, 1950-1960s

USD 300 - 500

1 black horsehair & velvet ribbon double flat bow top knot pillbox, label "Lilly DachÃ©, New York", circ. 13.5", H 5", (tiny holes, fragile, edges of buckram fraying) fair; 1 navy felt w/ trimmed Ostrich pompoms & sculpted brim, label "Gusse S. Smith, San Francisco", circ. 20.5", Ht 5", size 6.5, very good; 1 white Ostrich feathered tiki hat, label "Irene of New York" & "Nan Duskin", circ. 20.75", size 6 5/8, Ht 8", very good; 1 black raffia Iberian style wiglet hat w/ silk poppies, label "Irene of New York", 8" x 9" x 3.5", (pulls to raffia) very good; 1 red felt w/ black trimmed feather pompoms, label "Jack Mconell", circ. 21.5", size 6.75, Ht 4", (1" light stain CB) good; t/w blue feathered



### 70: FOUR LADIES BONNETS, 1850-1880s

USD 300 - 500

1 ladies mourning bonnet w/ gathered & pleated festoon over crown, finely ruched ribbon edging, wide ribbon ties, c. 1850, inner brim circ. 18.5", (1 ribbon damaged, trim detaching & pinned in several places, lining detaching) good; 1 black straw mourning bonnet garnished w/ black Chantilly lace, 1880s, inner brim circ. 17", (1 tiny chip to straw left side of brim, tiny holes to lining, ribbon tie partially replaced) very good; 1 mourning bonnet of overlapping bias cloth, c. 1880, inner brim circ. 16.5", (areas of shattering throughout esp. at crown) fair; 1 dark forest green wool twill & French black silk velvet Falcon Hood bonnet, 1870-1880s, brim circ. 17", (small areas of shattering at nape, ties worn) good.



### 71: THREE LADIES BONNETS, 1830s & 1870s

USD 400 - 600

1 patterned ivory silk spoon bonnet florals, trimmed w/ wax paper buds & cloth leaves, 1870s, brim circumference 16", (dirty, spot stains throughout, lining shattering) good; 1 exceptional cream silk satin w/ silk soutache appliques, deep neck shade, buckram interior lined in china silk, 1830s, "Mrs. Oscar Chittendey", brim circumference 15", (tiny spot stains & holes throughout, ribbon tie damaged) very good; 1 of horsehair & light celadon half silk, ruched & gathered brim lining, crimped horsehair edge w/ crystal beading & silk blond lace 1870s, brim circumference 20", (ribbon ties & lining shattering, bead loss, spot stains throughout, lace trim torn) poor.



### 72: EUGENIE BONNET, AMERICA, 1860s

USD 300 - 500

Bonnet of fine wool twill w/ silk floss embroidered floral sprig at crown trimmed w/ silk blond lace & fine silk pico edged ribbon festoons at temple, circumference 17", (discoloration & light staining throughout, holes across crown & lining, ties frayed, structural wires wearing through lining & rusty) fair- good; t/w 'Gold Dust' booklet, early 1870s, Provenance: Mary Pritchard, wife of General BD Pritchard, Capt. In the Union Army in 1861.



### 73: FIVE BEADED POUCH BAGS, 1880-1920

USD 300 - 500

1 dark grey crochet w/ steel cut beads, 7" x 7", (beads rusting near bottom, holes near bottom, 1 loop for drawstring casing torn); 1 woven w/ floral arabesques, 7" x 9" w/ 2" fringe, (bead loss & tarnish in fringe, fraying at 1 end of drawstring casing); 1 woven & beaded in rose motif, silk & cotton plush lining, drawstrings, 5" x 10.5", (staining to velvet top & drawstring, cord casing shattering at edges); 1 crochet café au lait w/ steel cut beading in Incan motif, 7" x 13", (broken fringe loops w/ bead loss to tassels, lining separating); 1 black crochet w/ steel cut beads & looped fringe, 7" x 10", (pulls to fringe loops at base of bag) all very good-fair.

## Holiday Vintage, Couture & Textile Auction



### 74: FOUR POUCH PURSES W/ EMBOSSED MEDALLION LIDS, c. 1900

USD 300 - 500

All pouch style w/ medallion lids: 1 armor mesh w/ embossed lid in stylized floral & foliate motif, Wd 1.75", L 1.75", Ht 5", (tarnished & oxidizing); 1 black crochet w/ black beads & Cupid & Psyche, stamped "Pat. May 7, 1900", Wd 2.25", L 2.25", Ht 6", (lid tarnished, crochet discolored, inside lid scratched); 1 cream crochet w/ steel cut beads & Renaissance princess motif, stamped "Pat. Dec. 15, 1903", Wd 2.5", L 2.5" Ht 1.5", (lid tarnished, crochet discolored, inside lid scratched); 1 crochet w/ blue beading & Medusa embossed lid, Wd 3", L 3", Ht 2.25", (lid tarnished), all very good-good.



### 75: SIX BEADED & FRINGED POUCH BAGS, 1900-1920

USD 300 - 500

1 red & black, 3.5" x 11", (hole in beading, drawstring fraying, drawstring & fabric lightly dirty); 1 dark green, 3.5" x 11", (fading to fabric & drawstring); 1 black w/ filigree frame based on Byzantine crown w/ blue lapis beads & cabochon, 3" x 11", (bead loss, 1 tassel missing, holes to beading at top, metal frame tarnished); 1 red & green, 4" x 11", (light chipping to beads, fading to fabric edging, lining & drawstring, wear to paint on drawstring loops); 1 navy, 3" x 9.5", (bead loss to loop fringe at base, fading to drawstring); 1 golden rod, 4" x 9", (tiny holes in edging at top edge) all very good-fair.



### 76: THREE BEADED FRAME BAGS, 1890-1920

USD 300 - 500

All knitted & w/ Czech beads: 1 green beaded w/ Gaudi inspired white metal frame, stamped "Nic Silver", 8.5" x 6.75" x 0.5", (tarnished, unlined) very good; 1 black w/ clear beading & Gaudi inspired white metal frame, 7" x 6.5" x 0.75", (lining starting to separate, pulls to lining, frame tarnished, frame separating from bag) good; 1 orange beaded, Classical Revival & Modern style gold tone frame w/ bezel set faux sapphire & ruby & faux sapphire cabochon closure, burnt sienna silk satin lining w/ ribbon rosette trim, stamped "Pat. Apl'd For", 8" x 7" x 0.5", (frame tarnishing) very good, interior excellent.



### 77: THREE BLACK & WHITE ENAMEL ARMOR MESH PURSES, AMERICA

USD 300 - 500

1925-1930s, All w/ pennant fringe & chain handles: 1 cream w/ black enamel & Art Deco white metal frame, stamped "Whiting & Davis", 3.75" x 6.75", (painted mail chipping, frame & chain tarnished); 1 black & white checkerboard motif w/ gold frame, stamped "Whiting & Davis", 6" x 8.5", (paint on mail chipping, frame tarnished); 1 black w/ white diamond motif, faux sapphire cabochon closure, 3" x 6.5", (frame & chain tarnished, fuzz stuck to mail on one side) all good.



### 78: FOUR PAINTED MESH PURSES, AMERICA, 1925-1930s

USD 300 - 500

1 w/ woodland scene & black enameled frame, stamped "Whiting & Davis", 5.5" x 6.5", (paint chipping, light tarnish); 1 w/ blue enamel frame & butterfly & blossom motif, stamped "Whiting & Davis", 6.5" x 6", (light tarnish, lining separating, paint starting to wear); 1 w/ yellow, white & green enamel in frame w/ painted cinquefoil motif, stamped "Whiting & Davis", 5.5" x 9", (light scratches & tarnish, lining starting to separate, enamel lightly chipped); t/w 1 w/ red & mauve enamel in frame & zig zag pattern in lavender, red, & yellow, Van Dyke fringe, all good.



### 79: TWO GOTHIC FRAMES GILT CHAINMAIL PURSES, AMERICA

USD 300 - 500

1900-1920s, both gilt & stamped "Whiting & Davis Co.": 1 w/ chased frame & fan fringed edge w/ gilt drop accents, 3" x 7.75", (tarnish to frame, rust spot to chain); 1 w/ rose cut emerald & colored bezel set accents, sapphire blue colored cabochon close & single tassel at vertex, 2.75" x 7.75", (missing 1 link CF near top) both good- very good.

## Holiday Vintage, Couture & Textile Auction



### 80: SIX CHASED OR ENAMEL COMPACTS, AMERICA, 1920-1930s

USD 300 - 500

1 w/ small orange enamel florals & black geometric, stamped "Evans", 2.75"x2.5"x0.5", (light scratching & tarnish); 1 Oriental inspired orange & black enamel w/ removable lipstick, 3.25"x2.5"x0.5", (enamel chipped, inside scratched & tarnished); 1 round ring compact w/ chased work, stamped "Deauville Pat. 12-2-24, Richard Hudnut NY, Paris, Made in USA, Pat's pend", 2"x2"x0.5", (chain oxidizing, tarnish, light scratches); 1 round ring compact, 2"x2.5"x0.5", (light scratches, tarnish, mirror damaged, loop on chain bent out of shape); 1 w/ triangular chased work & pop-up stand, 2.25"x2.25"x0.5", (light tarnish & scratches); 1 silver & gold tone w/ black tassel & handle, 2"x7"x0.5", (light scratches & tarnish, tassel messy, hinge offset) all good-fair.



### 81: FOUR LADIES ACCESSORY COMPACTS, 1930-1940s

USD 300 - 500

1 white metal w/ sapphire & ruby tone faceted accents & enamel oval water scene w/ chased gold swan, 2" x 3" x 1", (latch broken, tarnish, oxidation inside); 1 square powder compact w/ floral embroidery, 2.5" x 2.5" x 0.25", (light tarnish spots on back); 1 gilt filigree w/ amber colored faceted stones to both sides, filigree & braided tassel, celluloid miniature comb insert, powder & rouge compartments, 2" x 1.5" x 1", (light tarnish); 1 etched gilt envelope wallet, compact compartment, coin holders & money clip, stamped "Berman Silver", 2.5" x 3.5" x 0.5", (lightly scratched, light tarnishing, oxidations spots inside, mirror cracked) all very good-fair.be



### 82: FIVE LUCITE HANDBAGS, AMERICA, 1950s

USD 300 - 500

1 cream pearlescent, label "Walberg", 8.75" x 2.5" x 9", (ghosting on back & bottom, missing 1 foot, lining stained, gilding worn); 1 large pearlized white w/ lock, 11" x 3" x 9.5", (wear to gilding, vinyl panels stained, interior "mirror" tarnished); 1 pearlized white w/ spring self button & gilt latch, label "Stylecraft, Miami", 8" x 4.5" x 10", (hinge warped); 1 mauve marbled w/ clear floral cut top & handle, unlabeled & attributed Charles S. Kahn, 8.5" x 4.5" x 9", (hinge & clasp tarnished, glue spots on lid, scratched); 1 gold taupe, label "Charles S. Kahn, Miami Florida", 10" x 4.5" x 9.5", (missing foot pad, interior lid lightly crazing, hinge tarnished) fair-good.



### 83: FIVE LUCITE HANDBAGS, AMERICA, 1950s

USD 300 - 500

1 clear w/ lattice carving, 1950s, unlabeled & attributed Charles S. Kahn, 7.5" x 4.5" x 9", (hinge detaching, lots of scratching to bottom); 1 clear lucite clamshell w/ rows of rhinestones & carved leaf motif top, 8.5" x 3" x 10"; 1 pink opalescent w/ gold confetti inlay & clear carved lattice pattern top, unlabeled & attributed Patricia of Miami, 9" x 3.5" x 8.5"; 1 opalescent white bucket bag w/ clear carved radiating floral lid, 7" x 5" x 12.5"; 1 clear w/ floral carved lid & clear double arced handle, 9.5" x 4" x 9", (sticky latch), (most w/ tarnish or wear to hardware, light scratching or scuffing) all good- fair.



### 84: FIVE LUCITE HANDBAGS, AMERICA, 1950s

USD 300 - 500

1 bakelite w/ carved flowers & leaves, 8"x4.5"x9"; 1 pearlescent w/ gold confetti inlay & clear cut radiating floral lid, c. 1957, label "Gilli Originals, New York" featured in "Carry Me", page 44-45, 9.25"x5"x8.5", (light crazing to lid interior); 1 black w/ multicolor glitter inlay, clear carved multi-compartment lid, 1954-1957, label "Patricia of Miami", featured in "Carry Me", page 196, 10.75"x4.5"x9", (scatches esp. at lid & handles, 1 chip to lid); 1 opalescent butterscotch w/ heart shaped latch, label "Shell-Glow" by Simplex", 8.5"x5"x8", (mirror damaged, 1 mirror bracket missing); 1 pearlized celadon, label "Patricia of Miami", 8"x4.5"x6.75", (most w/ light scuffing & gilt hardware tarnish) all good- fair.



### 85: TEN CARVED BAKELITE BANGLES, AMERICA, 1930-MODERN

USD 300 - 500

All w/ circumference 7.75"-8": 3 slender orange & cream marbled vintage bakelite, Wd 0.125"-0.25"; 1 black slender & scalloped, Wd 0.125"; 1 red/orange marbled, Wd. 0.25"; 1 scarlet w/ carved wheat sheath motif, Wd 0.25", (tiny dark spots), 1 dark forest green & carved w/ vines & concentric circles, Wd 0.5"; 1 orange w/ carved & painted celestial motifs & clown face accented w/ rhinestones, Wd 1"; 1 wide cherry red w/ carved leaves & berries, signed "Panti", Wd 1.25", (most w/ residue recesses from carving, light scuffs or scrapes); 1 matte yellow & faceted, Wd 0.75"; all good-excellent.

## Holiday Vintage, Couture & Textile Auction



### 86: SHULTZ 9/11 COMMEMORATIVE BANGLES, AMERICA, MODERN

USD 300 - 500

All signed "Shultz" & w/ circumference 7.75"-8": 3 faux malachite w/ marbled yellow & red color block insertions, 1 signed & w/ 9-11-01", Wd. 0.5"-0.75"; 2 cherry red w/ marbled green & yellow insertions, both signed "Shultz, 9-11-01", Wd 1.25"; 1 teal w/ oval checkerboard insertions in cream & red, Wd 1.25", 1 cherry red w/ checkerboard insertion in green, cream & red, signed & w/ 9-11-01", Wd 1.25", (all w/ light scuffing), 1 red w/ checkered dots, etched "Shultz, 9-11-01", Wd 1.25", all very good-excellent.



### 87: TWELVE LEA STEIN CELLULOID BRACELETS, PARIS

USD 300 - 500

All w/ circumference 7.5"-8": 2 patterned cream & black twist, Wd 0.5"; 1 grey & red interlocking w/ green striped interior, Wd 0.5"-1"; 1 dot & dash multi colored matte in blue, red, saffron & green w/ white highlights, Wd 0.5"; 1 black w/ concentric opalescent ovals, Wd 0.25"; 1 black w/ purple & pink snakeskin "V" motif, Wd 0.75"; 5 twisted multicolored bangles w/ signature "knot" detail, Wd 0.5"; 1 red & blue layered oval motif, Wd 0.25" (most w/ light scuffing), all very good-excellent.



### 88: SIX BRUCE PANTTI DOT MOTIF BANGLES, AMERICA, MODERN

USD 300 - 500

All signed "Pantti" & w/ circumference 7.75"-8": 3 w/ cut out & recessed dot motif: 1 marbled teal, Wd 1.5"; 1 black, Wd 1.25", (small-tiny chips to interior of carving); 1 marbled light green & cream, Wd 1.25"; 1 black w/ marbled green & purple dots, Wd 1"; 1 black w/ irregular green dots, Wd 1.5", (scuffs, discoloration in some green dots); 1 black w/ large purple dots, Wd 1.5", (most w/ light scuffing) all good-very good; t/w 1 unlabeled navy w/ green dots, Wd 1.25", (thumbprints & chip inside, outside lightly scuffed)



### 89: SEVEN LEA STEIN ART DECO BROOCHES, PARIS, MODERN

USD 300 - 500

All stamped on findings "Lea Stein, Paris": 3 Corolle Flower Lady brooch, all w/ striped ivory colored face & black star eye, 1 w/ teal & black stone motif collar & cap, white snakeskin shell ear, 1 w/ green & black stone motif collar, red snakeskin shell ear & white snakeskin cap, 1 w/ purple snakeskin collar & cap & marbled purple shell ear, 1.75" x 2.25"; 1 large pyramidal pin in moss green, white & silver, 2.75" x 2.75"; 3 Collarette Art Deco Lady brooches, all w/ white or ivory striped faces, caps, collars & stylized shell motif ears in shades of white, green, blue & butterscotch, 2.25" x 2", (green has residue on back), (most w/ light scuffing) all good-excellent.



### 90: EIGHT BLACK, RED & WHITE LEA STEIN BROOCHES, PARIS

USD 300 - 500

All modern & stamped on findings "Lea Stein, Paris": 2 Carmen Joan Crawford both w/ ivory striped figures, black eyes & B&W ball earrings, 1 w/ cherry red snakeskin blazer & black & purple cobblestone hair, 1 w/ crimson blazer & peach snakeskin hair, 2" x 1.75"; 2 Art Deco Cicada brooches: 1 w/ black & white pinstripe wings, cherry red & black stylized head & 1 w/ scarlet imitation mokume gane wings & white & grey stylized head, 1.5" x 3.25"; 3 Potted Flower in autumnal shades w/ black pots, 1.75" x 2"; 1 black, red & white maple tree, 3" x 3.5", (most w/ light scuffing) all good-excellent.



### 91: EIGHT UNUSUAL LEA STEIN BROOCHES, PARIS, MODERN

USD 300 - 500

All stamped "Lea Stein, Paris": 1 purple & green shore bird pin, 1.75" x 2.25", (tiny dots on back); 1 black & pink Swallow or Swift pin, 1" x 3.5"; 1 salmon pink cobblestone motif cat pin 1.5" x 2"; 1 Native American Indian head in shades of purple & gold, 2.25" x 2.25"; 1 pink & teal Double Felix the Cat pin, 2.25" x 2.5"; 1 Saxophone Player brooch w/ ivory striped ground, fuchsia base & purple sax, 2" x 2.5"; 1 Double Lead brooch in blue & light grey, 2.5" x 2"; 1 Butterfly Brooch in purple & pink, 2" x 1.75", (most w/ light scuffing) all good-excellent.



## Holiday Vintage, Couture & Textile Auction



### 92: NINE PAVONE CAT GALALITH PIECES OF JEWELRY, FRANCE

USD 300 - 500

All modern: 5 cat pins, all label "Pavone": 1 navy to blue ombré, 2" x 2.75", 1 seated orange ombre w/ black whiskers, 2.5" x 3.75", 1 pearlized green w/ orange ombre head & yellow foot, 2" x 4", 1 green w/ tortoise shell face, 2.5" x 3.5", 1 teal ombre w/ red metal tail, 2.5" x 3"; 2 pairs of green cat face clip-on earrings: 1 w/ square face & black ear facing 1.25" x 2", 1 w/ round face & green ear facing, 1.5" x 2.5", (light scratches); 2 stretch bracelets: 1 emerald green w/ oversized cat face & 1 brown, yellow & green w/ full stylized cat form, Wd 1.5"-2", circumference 7"-10", (large green w/ cracking to face) (most w/ light scuffing) all good-excellent.



### 93: EIGHT LEA STEIN ANIMAL THEMED BROOCHES, PARIS, MODERN

USD 300 - 500

All stamped on findings "Lea Stein, Paris": 3 Famous Fox brooches: 1 pearlized blue, 1 black w/ confetti & 1 green & grey, 2" x 4.25"; 2 Art Deco Cicada: 1 blue stripe & 1 clear w/ suspended teal & purple inlays, 1.5" x 3.5"; 1 Tortoise Turtle in shades of blue, purple & pink w/ gold outlines, 2" x 3.5"; 2 'Gomina the Sleeping Cat' pins, 1 purple & grey & 1 pearlized purple, 3" x 2", (some w/ light scuffing); 2 curled up cats, 3" x 2", (lightly scratched), all very good-excellent.



### 94: TWO SILK SHAWLS, TURKMENISTAN, 1920s

USD 300 - 500

Both triangular w/ asymmetrically pieced, woven geometric large scale banned border in shades of yellow, white & black extending from vertex & tablet woven black & red fringe: 1 crimson, 209" x 50.5" w/ 3.5" fringe, (dirty & stained at both corners, stains near trim center, pulls throughout) good; 1 scarlet w/ broader border, black woven corded trim at top edge, 86" x 52" w/ 3.5" fringe, (pulls) very good.



### 95: TWO SILK IKAT ROBES, TAJIKISTAN & UZBEKISTAN

USD 300 - 600

1 purple, cream & violet, tablet woven blue border, vertical lines of fine stitching anchoring silk to lining, printed Russian cotton lining, Tajikistan, early 20th C, CH 48", L 49.5", (inking bottom right corner of lining, very light stain CB above hem) very good; 1 red & cream silk, faced w/ printed cotton, made of narrow ikat silk in 10.75" widths, late 19th C, Uzbekistan, CH 53", L 48", (light staining throughout, few small holes above hem) good.



### 96: TWO CHAPAN, UZBEKISTAN & KOHISTAN, 19TH C & 1920s

USD 300 - 600

1 green, cream, crimson, yellow & pale blue silk ikat chapan, self fabric bias strip facing, made of narrow ikat silk in 11.25" widths, 19th C, Uzbekistan, B 48", L 49", (light stains to upper back, 0.75" tear at left knee, few tiny holes above left front hem, seam opening right lapel) good; 1 hand blocked cotton in boteh motif chapan w/ vestigial style sleeve w/ elongated slit from cuff to inner elbow, side slits over H to interior pocket, double rows of fine quilting throughout, Kohistan, 1920s, B 44", W 38", L 39", (lightly faded right sleeve & above back hem) very good.



### 97: ONE IKAT PANEL & ONE CIRCULAR SHAWL, UZBEKISTAN, 19th C

USD 300 - 500

Ikat panel in red, cream & yellow w/ tablet woven border in blue, yellow, purple & white, 60.5" x 87", 19th C, (original cotton lining removed, spot stains throughout, 1" cut to one edge, 0.5" worn spot to one short end, 0.25" hole at center) fair; 1 gold & red circular shawl of 2 plain weave panel, both 13.75" w/ long section of weft stripes in red & black & white twisted threads, center seam w/ decorative stitching & extensions in feathered motif, Uzbekistan, 27" x 69.5", very good; t/w 13 silk fragments, Uzbekistan, 19th C.

## Holiday Vintage, Couture & Textile Auction



### 98: HOUSEHOLD & PERSONAL TEXTILES, INDIA, 19TH & EARLY 20TH

USD 300 - 500

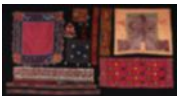
1 red, green & yellow resist dyed Bandhani Dupatta Khatri w/ geometric bullion, stamped paillettes & flat metallic highlights embroidered over linear & spotted design, Gujarat, early 1900s, 75"x48", (small holes, dark spot stains); 2 red Bandhani turbans, Rajasthan, 5.5"x5+ yds & 8"x5+ yds, (spot stains, tiny holes); 1 red embroidered Patti Kutch, 3"x60", (fraying, spot stains); 2 bead embroidered "M" shaped toran, Gujarat; 1 embroidered Kutch, maroon w/ 3 circles, 7.75"x18", (fraying); 1 dark purple embroidered Rabari Patti, 5.5"x55.5", (fraying, embroidery unfinished); 1 Gujarat embroidered Chakla, 10.5"x13.75", (damaged or missing paillettes/mirrors); 1 embroidered choli front, Balochistan, 1950s, 21"x14", (raw edges) all fair-good.



### 99: TENT HANGINGS OR DECORATIVE ELEMENTS, UZBEKISTAN

USD 300 - 500

Late 19th C-early 20th C: 1 Shegosheh tent hanging, Uzbekistan, 19th C, 26"x26.5", Wd 3.25" w/ 6" fringe, (fringe messy & broken, fading); 1 zig-zag & diamond panel, Uzbekistan, 10.5"x38.5"; 1 red & orange embroidered square, Balochistan, 8.75"x8.75", (fraying); 1 child's Kohistani neck piece, 10"-15"x11", (dirty/stained, fraying); 3 embroidered purses, Uzbekistan, 5"x8", 6"x9", 6.25"x7.75"; 1 wall decoration w/ pink base, Uzbekistan, 5"x25", (edges fraying, tie worn); 2 embroidered belts, Uzbekistan, 19th C, 4.25"x33" & 3"x37"; 2 embroidered strips, Turkmenistan, 19th C, 2.25"x42.5" & 2.5"x21.5", (worn); 2 woolen strips, Uzbekistan, 19th C, 3"x23" & 3"x19", (dirty, worn, fraying); 1 orange flower Suzani fragment, Uzbekistan, 19th C, 12"x9", (2"x0.5" cut corner) all fair-good.



### 100: SIND & BANJARA EMBROIDERED ELEMENTS, INDIA, EARLY 20TH

USD 300 - 500

1 cream Sind embroidered Phulkari pillow cover, 17.5"x17", (wear to embroidery, light spot stains); 1 orange Sind embroidered Choli pillow cover, 29.25"x24.25", (choli shattering); 1 Gujarat embroidered Patti Kutch, 8"x41.75", (fraying edges); 1 embroidered Banjara bracelet, circumference 8", Wd 0.5", (wear & matting to tassels, button oxidizing); 1 embroidered Banjara bag w/ mirror discs, 8"x7", (dirty, worn); 2 embroidered Banjara Patti, 2"x46.5" & 2"x42.25", (wear to edges); 1 embroidered Banjara bag, 1 2"x12", (spot stains 1 side); 1 cube shaped embroidered Banjara bag; 1 pinwheel & circle pattern embroidered Banjara Patti, 5.75"x25.5", (wear to edges); 1 red, orange & yellow embroidered rectangle Patti, 2.75"x30", (wear to embroidery) all fair- good.



### 101: BESPOKE AMBASSADORIAL KIT, ENGLAND, 1901-1910

USD 500 - 800

1 black tailcoat w/ ambassadorial goldwork embroidery, velvet collar & cuffs, CH 39", L 20.5"-38", label "Ede, Son & Ravenscroft, Est. 1689", (very tiny snags & holes throughout, light stain CB & left sleeve, velvet worn, lining damaged) good- very good; 1 pair black wool trousers, W 35", L 41", inseam 31", (stirrups worn & w/ 1 button missing, small light stains) very good; 1 sword holster, (worn, snags, stains) poor; 1 pair boots, L 10.5", Ht 6", size 9.5, (misshapen, scuffed, cracking) fair; 1 pair shoes, L 10.5", Ht 3.25", size 9.5, (1 buckle detached, scuffed, misshapen) fair; 1 bicorn w/ gold embroidery, L 20.5", Ht 8", size 7, (light wear, 1 spot of glue) very good; t/w 1 white trousers & 2 pair stockings; original footlocker. Colin Smith Esq.



### 102: BESPOKE PARLIAMENTARY UNIFORM, ENGLAND, 1934-1936

USD 500 - 800

1 French black silk velvet tailcoat w/ Marcasite buttons, CH 40", L 19.5"-39", (light crushing to CB) very good; 1 pair trousers, label "Davies & Son (London) Ltd.", W 32", L 35.5", inseam 21.5", (1 "stone" missing at button) very good; 1 silk satin vest, CH 43.5", L 20", (small dark stains, green stains & tiny holes in CB cincher) good; 1 sword holster, W up to 34", L 1.5"-7.5", very good; 1 bicorn hat w/ silver linked panache, circ. 23.5", size 7.5", L 18.5", Ht 6", very good; 1 footlocker, label "Davies & Son"; 1 pair shoes, L 10 5/8", Ht 3.25", size 10, (badly scuffed) fair. Provenance: Henry Drummond Wolff, 1899-1982, member of Parliament for Basingstoke, 1934-1935 & member of the British Conservative Party.



### 103: THREE MANS VESTS, 1840-1850s

USD 300 - 500

1 fine ribbed silk olive green w/ quilted interior, 1840s, CH 41", L 23.5", (1 button missing, 1.5" x 2" fading/stain left of CF, stains to lining) good; 1 cream ribbed cotton pique w/ welt faced floral drouget summer vest, 1850s, CH 47.5", L 20.5", (back cincher cut off at both SS, tiny dark spot stains throughout, 5" x 1" stain right SH blade, tears & wear to edges, 2" tear CB collar seam) fair; 1 black spot patterned silk satin glazed cotton lining, 1840s, CH 44" L 21", (lining dirty/worn, light wear to buttons & armscye, pulls at back of SHs) very good.

## Holiday Vintage, Couture & Textile Auction



### 104: TWO MANS TROUSERS & ONE UNDER DRAWERS, NEW YORK, 1890s

USD 300 - 500

1 black wool w/ fly front & front side pockets, back buckle, linen & cotton lined, 1890, W 28", L 42.5", inseam 30.5", (8" seam opening at fly, snacks across lap & seat at CB W band, 0.5" tear CB V, seam opening at back W, W buttons chipped) good-fair; 1 wool houndstooth, fly front, watch pocket, 2 front side pockets, back buckle, brass buttons stamped "J. Patterson, New York", W 30", L 44.5", inseam 33", (moth holes throughout, 0.5" light stain above right cuff) fair; 1 white cotton under drawers w/ cross closure front, back buckle & tie cuffs, 1890s, W 38", L 39", inseam 28.5", (spot stains throughout, tarnish stains from buckle CB W cincher, fraying CB seam) fair.



### 105: COLORED FASHION PLATES, 1818-1830s

USD 300 - 500

1 ladies accessory plate, c. 1818, 8"x9"; 2 ladies & gents colored fashion plates, 1835, 1 marked "Moden", 1 marked "Pariser, Moden, Winter-aufang"; 1 colored gents fashion plate, "Petite Courier des Dames", Oct. 31, 1837, (torn & stablized); 8 accessories plates, 1830s, some signed "Rickter"; 1 ladies & gents fashion plate, 1830s, (all w/ light dicoloration, most w/ wear or small tears at edges) fair-good. From the Collection of Karen Augusta.



### 106: TWENTY ONE LADIES COLOR FASHION PLATES, 1840s

USD 300 - 500

8 "La Mode", 1840s, 6.75" x 9", (yellowing, chipped & creased edges, foxing); 4, July-September, 1844, 5.75" x 9", (yellowing, foxing, chipped & creased edges); 3, January-March, 1845, 5.75" x 9", (yellowing, foxing, chipped & creased edges); 5 "Journal des Demoiselles", 1840s, 5.75" x 9.25", (yellowing, foxing, chipped edges); 1 unmarked, 5.75"x9", (creased edges, foxing) fair-very good. From the Collection of Karen Augusta.



### 107: TWENTY SIX LA MODE FASHION PLATES, 1840s

USD 300 - 500

18 hand colored, c. 1847, 5.75-6" x 8.5-9", (discoloration, chipped edges, light foxing); 8 hand colored, 1840s, 5.75" x 9", (discoloration, chipped edges, foxing) all fair- very good. From the Collection of Karen Augusta.



### 108: LARGE LOT OF ACCESSORY PLATES, FRANCE, 1850-1860s

USD 300 - 500

24 color, 6 black & white: 6 "Le Conseiller Des Dames et Des Demoiselles", June, 1863-September, 1864; 9 "Les Modes Parisiennes", 7.5-8"x10.25-10.75", 3 "Le Moniteur de la Mode", April & June, 1851 & September, 1852, 7.25-8"x10.5-11.5", (light water staining); 4 "Le Follet", 1855, June & August, 1863, 6.5-7"x10-11"; 4 "4 "Modes de Paris, Petit Courier Les Dames", January, 1864-December, 1867, 7.5-7.75"x10.5-11"; 1 "Le Bon Ton, Journal des Modes", 7.25"x10.5"; 4 "Journal Des Demoiselles", August 1, 1861, 6.75-7.25"x10.5", (all w/ some discoloration, foxing & chipped edges), all fair- very good. From the Collection of Karen Augusta.



### 109: HATS & ACCESSORY PLATES, FRANCE, 1860-1880s

USD 300 - 500

9 plates: 7 "Journal des Demoiselles", April, 1876, April 1881, November, 1881, 6: 7.25" x 10.75", 1: 9.5" x 12.75" (wear to edges, tiny spot stains, yellowing); 1 "Le Conseiller des Dames & des Demoiselles", October, 1860, 6.5" x 10.75", (chipping & discoloration at edges); 1 "Le Monitor de la Mode", 7.25" x 10.5", (discoloration, crease on right edge, 0.5 tear left edge) all fair-very good. From the Collection of Karen Augusta.

## Holiday Vintage, Couture & Textile Auction



### 110: FIVE GODEY'S & HARPERS BOOKS, 1841-1858

USD 300 - 500

1 "Godey's Lady's Book & Ladies American Magazine, Vol. XXIII - From July-December, 1841", 6.25" x 10" x 0.75", (child's handwriting in front cover, foxing to pages, wear to covers, spine cracking); 1 "Godey's Lady's Book", c. 1858, 6" x 9.75" x 3", (wear to cover, spine detaching); 1 "Godey's Magazine and Lady's Book, Vol. XXXII - From January-June, 1846", 6.5" x 10.25" x 1.75", (wear to cover, foxing to pages); 1 "Godey's Lady's book and Ladies American Magazine, Vol. XXVI, From January-June, 1845", 6.5" x 10.5" x 2", (wear to cover, spine cracking, pages foxing); 1 "Harpers New Monthly Magazine, Volume IX, June-November, 1854", 6.5" x 9.75" x 2", (foxing, wear to cover, spine cracking) all fair- good. From the Collection of Karen Augusta.



### 111: LOT OF CLOTH BRIDAL FLORALS, MID 20TH C

USD 300 - 500

Approximately 40 assorted floral sprays, including ones made in Germany, & others attached to pins, approximately 75 small pearlescent bud bouquets, ranging in size from W 4", L 11", H 3" to W 3", L 5", H 1.5", fair-pristine.



### 112: LARGE LOT OF BEADED & SEQUINED TRIMS, ITALY, 1900-1950

USD 300 - 500

Black sequined ribbon, 2.5" x 88"; white ribbon, 1" x 24 yds; Italian leaves, 4" x 1", 2.5" x 1.5", 2.25" x 2"; beaded buttons; beaded & sequined passanterie Renaissance style dress trims, very good-fair.



### 113: JET & STEEL CUT BEADED TRIMS, 1870-1920s

USD 300 - 500

Victorian trims: 6 "anchors" 3.25"x3.75"; silver trim 1.75", 13.25", 5", 12", 14", 8.5", 5", 3.5", 1.5", 3.5"; black floral beaded ribbon trim 1.5"x33" t/w jet beaded trim. All fair- good, most salvaged.



### 114: LOT OF WAX & PAPER FLORAL CORONETS, 1900-1920

USD 300 - 500

13 wax or flower coronets including: 1 w/ pearlized bud crown w/ painted velvet blossoms & leaves w/ garnet colored stamens on foundation of silver wrapped silk covered wire, 1 w/ pearlized buds, wax blossoms & rhinestone scrolls attached to silk wrapped wire base, 1 Persian style of metallic lace trimmed w/ waxed blossoms & buds, circumference range 18"-23", part circlet L range, 11.5"-15.5" 4 damaged floral, (most missing florals, wear & fraying to textiles, wire oxidizing & leaving stains on fabric) all good-poor.



### 115: GOLD COLLARS, CROWN & CORONETS, 1910-1920s

USD 300 - 500

1 Scheherazadi headpiece of metallic mesh, bullion fringe, tinsel covered crown w/ blue & red faceted glass jewels, circ. 23", (misshapen, bead loss, bead coating flaking, wear & tears to fabric, oxidization) 4 coronets w/ silver & gold metallicelements, rhinestones, sequins & faux pearls, circ. Range 15.5"-21", (sequin, rhinestone & glitter loss, oxidization, wear); 4 metallic collars, including smocked & puffed broad collar & SH piece w/ CF rose, Made in France; L range 15.5"-23.5", Wd range 1"-6.25", (tarnish & oxidization to all) coronets/ crowns all fair-poor, collars good-fair.



### 116: EIGHT PEARL CORONET & HEADPIECES, 1910-1920s

USD 300 - 500

7 Pearl coronets & head pieces including: 2 multi-strand wax filled pearls, 1 white coronet of pearlized wax filled beads in double floral motif, 1 small circlet w/ florals composed of dipped pearlized stamens & loops of seed pearls on wrapped silver wire base, 1 double leaf motif w/ CF medallion, full circlet circ. range 20.5"-23", part circlet L range, 11.5"-17.5", (all w/ bead loss, fraying & light staining) all good-poor.

## Holiday Vintage, Couture & Textile Auction



**117: EIGHT HEADPIECES, 1910-1920s**

USD 300 - 500

5 Headbands, 1920s: 1 appliqué converted to headband, Wd 4.25", L 60.25" w/ ribbon, 1 pale green lamé w/ rhinestones, Wd 1.5"-6.25", circ. 26.5", (discoloration, loose/missing rhinestones), 1 w/ floral beading & green chiffon, circ. 24", Wd 4.5", (chiffon back damaged), 1 lamé soutache & beaded, L 16", Wd 0.5"-4", (bead loss & slight damage), 1 black net w/ cream embroidery & beads, circ. 22.25", Wd 2.5", (bead loss); 3 Skullcaps, 1920s: 1 Renaissance style snood lamé w/sequin, circ. 22", size 7, (missing beads, oxidation), 1 heavily sequined flower skull cap, circ. 21", size 6 5/8, (sequin & bead loss, sequin wear); gold sequined net skull cap, 20", size 6.25", (sequin & lamé loss, tarnish), all fair- very good.



**118: TWO EXTENDED DECORATIVE BODICES, LATE 1870s & 1890s**

USD 300 - 600

1 aesthetic bodice of black ribbed silk & elaborately embroidered brown broadcloth, attached Oriental style tablar vest w/ front reverses to high stand collar & jet embroidered plastron, decorated tab drop at CB w/ attached black lace gathered panels, 1890s, B 32", W 24", L 30-33", (few CF hooks & eyes missing, loose or detaching, 3.75" tear right SH underlayer, beginning bead disease, shattering interior CB collar) good; 1 early Jacobian revival style black patterned velvet w/ acorn & oak leaf w/ Schifflli embroidered black floral appliques w/ metallic gold thread highlights, black jet beading CF & CB over bustle, 1870s, B 33.5", W 27", L 19-47.5", (no buttons, bead disease only CB, 2.5" & 2" seam openings left armscye, 4" trim detaching 1 cuff) good.



**119: TWO BLACK CAPELETS, 1860-1890s**

USD 300 - 500

Dolman of black plush w/ jet beading to front & back panels, chenille fringe & red plush lining, B 24", L 19", (shedding, bead disease) good; 1 black silk & voided velvet jacket w/ dolman style sleeves attached to back panel & rabbit fur passementeries, quilted lining, B 36", L 34", (discoloration to left CF opening, velvet worn, some tassels worn or missing) fair. MCNY.



**120: YOUNG WOMANS DAY DRESS, c. 1842**

USD 300 - 500

1 cream cotton mull delicately printed w/ pink floral & green foliate, slight bell sleeves w/ paired ruffles at upper arm & sleeve edge, embroidered appliquéd net lappet, B 31", W 26", L 52", (15.5" of gathering at CF W loosened, W altered, spots of shattering at SHs, 4.5" tear back of skirt, small holes in skirt, lappet added) fair.



**121: CREAM SILK TRAINED EVENING/PRESENTATION GOWN, 1880s**

USD 400 - 600

Trained basque bodice of cream silk ottoman w/ handmade bobbin lace collar & inserted gathered ruffles at CF, trimmed fringe of twisted silk, chenille & crimped ribbon, glove length sleeve shaped to elbow w/ double cuff, B 40.5", W 32", L 25"-99.5", (inside of 2 buttons missing, shattering at piping, buttons & spots at SHs, cuffs & collar, lace right lapel detaching, cuff tack undone left sleeve, 0.75" tear top left edge of train), underskirt of cream silk satin w/ ladder band swags & deep pleats to sides drawn into polonaise, square train, W 26", L 40.5", (4.5" seam opening b/t CB W band & skirt, tiny spot stains lap, shattering at W & around pleats, stains to CB panel) fair.



**122: TWO BROWN DAY DRESSES, c. 1885 & 1892**

USD 300 - 600

2-pc net gown Schifflli embroidered in stylized floral & foliate bands in brown & cream, trimmed w/ brown silk taffeta ruffled collar & oversleeves gathered below elbow w/ attached embroidered cuffs, underskirt of brown cotton, 1892, B 31", W 24", L 17", skirt W 24", L 41", (underarm stains, fraying, spot stains, 0.5" hole right W, 1"x0.5"stain lap, 0.5"x2" stain knee); 2-pc brown silk velvet w/ standing collar, eccentric faceted glass ball button closure, bodice w/ princess line extended panels over Hs &CB w/ draped Polonaise bustle, B 35", W 27.5", skirt W 27", L 39.5-42", (wear to SHs, button holes & cuffs, 4" repair left underarm, 1" repair right underarm & right side polonaise, tears W band, chipped button, wear to hem & W band) both fair.

## Holiday Vintage, Couture & Textile Auction



**123: EVENING GOWN ELEMENTS, PARIS, c. 1891**

USD 300 - 500

3-pc all of chine silk satin w/ floral bouquets & tendrils: CF lacing evening bodice trimmed w/ silk blond lace at CF, collar & SH, printed petersham, label "Mademoiselle Geer, Ave L'Alsace, Paris", B 36", W 24.5", L 22"; set of glove length sleeves w/ 18th C revival single engageantes w/ flounce in blond lace w/ silk satin flat ribbon bow to inner elbow, L 20"; square evening train w/ deep pleats to CB, Wd 7"-53", L 57.5". (missing 1 hook, sleeves & train detached, tiny snags & stains, lace at armhole damaged) all very good. Provenance: From the Estate of J.P. Upham.



**124: TWO EVENING GOWNS, c. 1892**

USD 300 - 500

2-pc of pink & taupe patterned stripe w/ floral sprigs, full purple silk velvet sleeves, silk crepe stomacher & collar w/ metallic sequins, skirt w/ crepe front panel, self bows CB & CF, B 37", W 23", L 20", skirt W 25", L 49", (sleeves & crepe panels added & unfinished, small stains right sleeve, sequins tarnished, bows detached, spot stains to skirt, W band w/ later addition beading); 2-pc heavy cotton sateen w/ embroidery to neck & cuffs, pink & red ribbon diagonal sash trim w/ matching bows to SH, CB, B 39", W 24", L 20", skirt W 24.5", L 42"-44", (stains & tiny holes to ribbon, small tears to left H, petersham shattering, light stains throughout, scattered small holes in skirt) both fair.



**125: CREAM SILK VISITING DRESS, c. 1898**

USD 300 - 500

2-pc cream silk satin, bodice w/ pleated & ruched CF closure, double collar flounce of embroidered silk chiffon, bodice B 34", W 24", L 20", (0.75" spot stain at B, tiny stains to cuff & collar, 3" tear to lace collar at back lf SH) skirt w/ ruched self-trim to hem, W 23.5", L 40"-45", (spot stains across skirt, 0.5" hole CB, soiled undertrain) good.



**126: TWO BLUE SILK EVENING GOWNS, AMERICA, c. 1905**

USD 300 - 500

2-pc chine in blue & grey on cream gown, reverse satin lace covered collar & monobosom edged in black silk velvet ribbon & bows, lace sleeves w/ sheer pleated & ruffled engageante sleeve, skirt w/ lace insertions, ruffle hem & ribbon edging, B 35", W 25.5", L 17", skirt W 28.5", L 44"-51" (underarm stains, few tiny stain CF, 1 bow detached, tiny-0.75" holes to lap & seat, tiny-4.5" stains, 5" repair left CB & 2.5" right CB, 2" tear seat); 2-pc striped silk taffeta in blue, brown & cream w/ brown silk velvet ribbons to bodice, B 34.5", W 24.25", L 16.5-18", skirt W 26", L 45-47.5", (crepe collar & cuffs added & damaged, boning damaged, 3" repair to lap, hem worn, spot stains, 0.25" hole in seat, modified) both fair. From the Estate of J.P. Upham.



**127: THREE YOUNG LADIES SUMMER FROCKS, c. 1905**

USD 300 - 500

1 cotton lawn dress w/ vertically tucked yoke & chevron tucking to back bodice w/ lace insertion to entire yoke, horizontal rows of tuck, lace insertion & ruching to skirt, CB MOP button closure, B 31", W 24", L 35", (period repairs to bodice) good; 1 white cotton lawn w/ deep ruffled edge to square yoke w/ tucks & Hamburg embroidery insertions, high band collar w/ ruffled edge, wide Hamburg embroidered flounce at hem, CB MOP button closures, B 31", W 24", L 43", (line of stains right SS, repairs left SS) very good; 1 white cotton monobosom w/ deep gathered SH flounce w/ drawn threadwork to collar, cuffs & hem, B 37", W 24", L 44", (several repairs in skirt) very good.



**128: TWO TULLE TEA GOWNS, 1910s**

USD 300 - 500

1 tea gown of silk tulle w/ embroidered floral & leaf motif to pleated SH top tiered skirt & at hem, pleated & gathered bodice, ruffle sleeve w/ SH, lavender sash, slip included, B 46", W 25", L 59.5", (few small-tiny holes in front skirt, 1.75" hole CF above hem, light fraying at neckline) good; 1 cotton tulle tea gown w/ short sleeves, fillet lace & embroidered overlay to cream silk satin draped bodice w/ satin edged net half vest w/ CB bow, deep band of fillet lace insertions & embroidery to ruffled hem w/ broad silk satin ribbon insertion to top tier of ruffled hem, c. 1914, B 36", W 25", L 55", (tiny holes & tiny stains, slip N/I) very good.

## Holiday Vintage, Couture & Textile Auction



### 129: TWO NET & RUFFLE TEA GOWNS, 1910s

USD 300 - 500

Both white cotton net: 1 w/ ribbon trimmed & ruffled deep collar ending in pennant point at CB, sleeves w/ double ruffled trimmed in gathered cream silk ribbon, ruffle edged panels inserted in horizontal band from either H to hem flounce, early form of robe de style, hem w/ 4 rows of gathered ribbon trim, c. 1916, B 40", W 24.5", L 51", (slip N/I, tiny holes at CF W & lap) very good; 1 w/ gathered & pleated bodice w/ ruffled ribbon to flounce around B line, puff sleeves w/ gathered ribbon to flounce at edge, 5 rows of flounces w/ ruffled ribbon to skirt, hem w/ double ruffle, B 31", W 21", L 49", (slip N/I, snaps detaching, missing sash) very good.



### 130: TWO EMBROIDERED & FILLET LACE TEA GOWNS, 1920s

USD 400 - 600

Both of fine cotton tulle: 1 w/ pearl cotton Philippine embroidered scoop neck dress in stylized florals & branches incorporating eyelets & French knots, fillet lace to back bodice yoke & hem, incorporated underdress of fine cotton tulle w/ neck, armhole & hem edged in fillet lace, B 38", L 42", very good- excellent; 1 of fine cotton tulle w/ scalloped fillet apron panel at front & back w/ needle lace insertions & rich pearl cotton embroidered florals, foliate & French knots, B 38", L 40.75", (slip N/I, tiny holes left arm binding, slight discoloration & fraying at seams & edges of fillet lace) very good.



### 131: THREE EMBROIDERED & FILET TEA GOWNS, 1920s

USD 400 - 600

1 w/ large CF panel from neck to hem of heavily embroidered florals in satin, bullion & French knots edged & w/ insertions of fillet, B 34", W 32", L 52", (slip N/I, inking from embroidery still present, loose & detached snaps, right cuff detached & included); 1 w/ vertical embroidered floral bands, CF tucking, flared fillet edged side panels, CF buttons, B 41", W 40", L 47.5", (tiny holes throughout, inking from embroidery still present, light yellowing, slip N/I); 1 w/ deep square neckline & alternating panels of embroidered stylized butterflies & embroidered fillet neck w/ heavy tracing cords, B 41", W 40", L 49", (fraying at neckline, 2 light 0.5" spot stains at seat, slight yellowing) all good.



### 132: TWO LACE OR EMBROIDERED TEA GOWNS, 1920s

USD 400 - 600

1 w/ vertical bands of Chinoiserie Shciffli machine embroidery on net w/ vertical tucks to godet inserts of fillet lace w/ paired crochet drops, B 37", L 44.5", (group tiny light stains CF) very good; 1 fine silk tape lace w/ inserted panels of net & open work in amoebic motifs, B 45", L 46", (light underarm stains, 1 broken bride at armhole) good. (slips N/I)



### 133: THREE HAND STITCHED COTTON ORGANDY PETTICOATS, AMERICA

USD 300 - 500

1850's: 1 paneled petticoat, double tucked at hem, gathered into W band w/ brass hooks & eyes, W 29", L 35"-37.5", (tiny spot stains throughout, 1.25" repair & group of 0.25-0.75" spot stains CF lap, 0.75" tear CF below W band) good; 1 hemmed w/ vertical tucks & double ruffled borders, W 83", L 45.5", (tiny-0.25" spot stains throughout, two 0.5" stains at W & lap, two 0.25" holes at lap/seat, unpicked W) good; 1 paneled, W 26", L 38.5"-43.5", (3" & 2" tear at CB, tiny holes throughout, no closures & modified W, staining at W band, 0.5" stain left of CB, three 1" stains & one 3.5" stain CB above hem) fair-good. From the Estate of J.P. Upham.



### 134: ONE MOURNING UNDERDRESS & TWO PETTICOATS, 1900-1910

USD 300 - 500

2-pc mourning underdress w/ corset cover & petticoat trimmed w/ black mohair 1860s lace & w/ cream patterned silk inserts to scoop neck, armhole & W band of petticoat, deep let out pleats over hip, B 41.5", W 24", L 18", W 23", L 40", (bodice w/ several 0.25"-0.5" tears right of CB above W, tiny pin holes throughout) good, skirt very good; 1 petticoat of glazed cotton w/ cotton sateen wide ruffle over narrow ruffle w/ triple row of cording above hem, c. 1900, W 32.5", L 41"-42", (0.25" hole CF W, light spot stains across hem ruffles) very good; 1 glazed cotton petticoat w/ black silk satin hem, horizontal tucking & applied silk bands for shaping, W 30", L 39.5"-42", (1" seam opening CB above hem) very good.

## Holiday Vintage, Couture & Textile Auction



### 135: THREE PETTICOATS, 1840-1850s

USD 300 - 500

1 cotton rope corded petticoat w/ woven horizontal channels to insert stiffening, 1850s, W 77", L 36.5", (fraying to cord casings, small spot stains, discolored) good; 1 cotton organdy high-low over petticoat hemmed w/ vertical tucks & ruched border, cartridge pleated CB, possibly matches 2nd petticoat in lot 136, 1850s, W 27.5", L 26", (trim at hem detaching /missing for 71.5", tiny spot stains & holes) fair; 1 gauze like muslin petticoat pleated into cotton W band, 1840s, W 35", L 41"-46", (1" stain to seat, 3.5" stain to hem, discoloration, 0.75" hole at left H, no closure) good. From the Estate of J.P. Upham.



### 136: FIVE CORSET COVERS, MID-LATE 1800s

USD 300 - 500

1 cap sleeved w/ open SH, body gathered into neck yoke, yoke & sleeves edged w/ tatting, B 45", W 24.5", L 14", (tiny spot stains, smattering of very small holes, trim torn right sleeve); 1 high necked w/ vertical tucked yoke & hm lace, 1870s, B 32", W 22", L 19", (light staining, trim torn left underarm); 1 cap sleeved w/ small eyelet trim & monogram at W, 1870s, B 35", W 24", L 18", (light spot stains, alteration at CB w/ all fabric present); 1 sleeveless bodice cover w/ lace insertion & edging, 1880's, (missing ribbons); 1 handmade Broderie Anglaise wide eyelet trim, 1850's, B 33", W 27", L 20", (darts removed, period repair left B, missing bottom CF button) all good-very good.



### 137: NINE LADIES UNDERGARMENTS, 1850-1870s

USD 300 - 500

3 ladies open drawers: 1 w/ broderie anglaise & tucks, W 24.5", L 30", 1 w/ tucks & embroidered scalloped lace, W 21.5-33", L 25", 1 ruffled & edged w/ lace, 1860-1870s, W 23.5-33", L 26"; 5 undershirts: 1 cotton pique w/ fringed pagoda sleeves, B 35", W 25", L 23", 1 checked dimity bed jacket, 1860s, B 62", L 24"; 2 trousseau bed jackets of same make w/ cotton soutache embroidery to yoke, collar & cuffs, B 41-44", L 26-27.5", 1 w/ inked initials never embroidered, 1850-1860s, B 33", L 29.5"; 1 long bodice w/ piping & white embroidered scalloped ruffles, 1870s; 1 corset cover w/ whitework embroidery & lace to collar & short sleeves, 1850s, B 31.75", W 25", L 15", (most w/ tiny holes & stains, few w/ missing buttons) all good-very good.



### 138: THREE PEIGNOIRS, c. 1900

USD 300 - 500

1 linen w/ tucked & lace trimmed collar to jabot front, fine let out tucking at CB, embroidered "Marthe", blue ribbon insertions at neck & cuff, B 50", L 53.5", (belt missing, 0.25" spot stains left cuff); 1 cotton lawn w/ geometric lace insertions to B, ruffled bell sleeves & hem, peach ribbon inserted through lace at high W, B 35", L 50", (excellent 1.5" repair left of CB); 1 fine cotton w/ lace collar & yoke edged w/ broad ruffle, lace insertion & edging repeated at cuff flounce, thin steel blue ribbon inserted at collar & cuffs, B 46", L 53", (0.25" stain at front hem, ribbon missing from right sleeve) all very good.



### 139: TROUSSEAU SET, 1880s

USD 300 - 500

All cotton w/ elaborate fine tucks & Swiss embroidered inserts & edgings: 1 short petticoat w/ horizontal & diagonal tucks, insertions & embroidered hem, W 23", L 32", very good; 1 dressing gown w/ elaborate vertical tucking & diagonally tucked inserts, hidden CF closure, MOP buttons, sleeves w/ deep cuffs of insertion & tucking, B 46", L 54", (1 button broken, group of tiny dark stains left underarm & left elbow, 1" tear left cuff) good-very good; 1 pair drawers w/ horizontal tucking w/ lace insertions, W 20.5", L 26", inseam 16", (few tiny-0.5" x 0.25" light spot stains to lap, light discoloration esp. at right leg) good.



### 140: THREE COTTON NIGHTGOWNS, 1890s

USD 300 - 500

1 cotton w/ lace insertions to collar, cuff & jabot of ruffled lawn w/ deep pleated faux bodice front detail, B 54", L 52", (2" x 2" cluster of light stains near right SS of hem) very good; 1 trousseau nightgown of fine cotton w/ leg oâ€™mutton sleeves, tabbed collar & cuff of fine Swiss embroidery & lace edging & insertion, lace & embroidery insert to back neckline, W band insertion to accommodate inserted ribbon, Dorset buttons, 1890s, B 39", L 59", (light 1" stain to lap) very good; 1 cotton nightgown w/ collar & jabot of hexagonal net w/ double row of check mark fillings, sleeves w/ shaped ruffles & same lace edging, B 47", L 54.5", (missing top button, tiny spot stains throughout, lace fraying at edges, seams separating at cuffs) good.



## Holiday Vintage, Couture & Textile Auction



### 141: SEVEN BLOUSES W/ EMBROIDERY OR LACE INSERTIONS, 1880-90

USD 300 - 500

1 w/ mm eyelet & bobbin lace, B 42", W 26.5", L 21.5", (4"x1" cluster stains right SS, light spot stains throughout); 1 w/ bands of lace inserts, B 46", W 28", L 23", (spot stains to SHs & sleeves, holes right SH); 1 spot embroidered cotton crepe w/ Oya needle lace collar & jabot, B 42", L 19", (3 button missing, left cuff torn at seam, 1" stain left B); 1 w/ Swiss embroidery throughout, carved MOP buttons, late 1880s, B 29", W 21", L 19-23.5"; 1 cotton lawn shirtwaist w/ tucks & geometrics lace insertions, 1910, B 42", L 24", (few tiny hole back collar); 1 net w/ needle lace, open work & tucking, 1905, B 37", L 18", (missing buttons); 1 Pina fiber w/ roses over drawnwork & Swiss lace insertions, 1900-1908, B 40", L 21", (yellowing) all good- very good.



### 142: FIVE WHITE CORSETS, 1900-1915

USD 400 - 600

1 w/ laces included, label "P.N. Trademark, Pat. 8.29.1910", B 32", W 23.5", H 32.5", L 14.25"-15.5", (discoloration, underarm stains, tiny stains); 1 w/ scalloped brocaded ribbon trim w/ stylized wheat motif, B 22", W 20", H 29", L 14.25"-17.25", (no laces, discoloration & stains, oxidizing); 1 w/ wide band of lace threaded w/ ribbon, label "Kabo, Live Model", B 29.5", W 18.5", H 33.5", L 16.5"-21", (no laces, discoloration & spot stains); 1 w/ lace edging, label "American Lady" & "Pat. 7.4.08" on buckles, B 30", W 19.5", H 31.25", L 11"-13.25", (garters damaged, tiny hole CF, metal oxidizing, discoloration & stains); 1 w/ triangle trim of diamond embroidery, label "Kabo", B 24.5", W 16.5", H 27.5", L 17.5"-20", (no laces, discoloration) all good- fair.



### 143: FIVE CORSETS, 1908-1915

USD 400 - 600

1 w/ lozenge lace trim & laces included, B 37", W 31", H 39.5", L 14"-15.5", (tiny-1.5" spot stains throughout, laces discolored & fraying); 1 w/ wide lace band & ribbon insertion, label "American Lady" & "Pat. 7.14.08" on buckle, B 32", W 21", H 34", L 16", (oxidation to closures & grommets, holes & fraying to lace, straps damaged); 1 w/ lozenge lace trim, label "Kant Kut Klasp" & "Pat. 5-7-12" on buckles, B 24.5", W 16.75", H 29.5", L 16"-18", (discoloration/stains, no laces); 1 w/ scalloped trim w/ dots, B 26.5", W 19.5", H 29.5", L 16"-17", (spot stains, discoloration); 1 w/ no embellished trim, label "Kabo", B 30.5", W 25.5", H 36.5", L 14.5"-17.5" (1 rusty garter, minor discoloration) all good-fair.



### 144: FOUR CORSELETS & ONE BODICE, 1850-1860s

USD 300 - 500

1 black silk bodice w/ passementerie & black jet trim, 1860s, B 32", W 22.75", L 19", (bead loss & shedding, SH seams unstitched, bow missing right SH, visible repair stitches left CF); 1 pink & black shot silk w/ piped edges & whalebone stays at CF, CB & SS, 1850s, W 22.5", L 2.5-7", (stains, wear to edges, shattering, only 1 set of laces, SSs taken in); 1 wool & silk check in tan & purple w/ purple silk taffeta ribbon, 1850s, W 23", L 1.5-6", (discoloration/stains, ruffle shattering & largely missing, bones poking out); 1 Bismark green silk twill, flatlined w/ cotton & w/ boning at seams, 1860s, W 21.5", L 3.25"-9.5", (0.5" stains left of lacing, light stains); 1 teal silk velvet, 1860s, W 24.5", L 3.5-10.75", (wear, facing detaching) all good- poor.



### 145: TEN PIECES OF PINK LINGERIE, 1920s

USD 300 - 500

1 silk crepe vest w/ Alencon lace, B 36", L 12.75"-16", (several tiny holes); 1 bra w/ lace straps, B 30", L 12", (light 0.5" dark stain right B dart); 1 peach bra, B 28", L 12.5", (fraying to lace & straps); 1 peach bra, B 28", L 12.5", (fraying to lace & straps); 1 pale pink bra w/ dark peach CF lace, B 33.5", L 13", (fraying to lace & straps, 1" tear to CB); 1 pale pink bra w/ wide lace band, B 30.5", L 12", (1.5"-1.25" tear); 1 pale pink bra w/ narrow pink lace, B 27", L 12.5", (fraying at edges); 1 pale pink slip w/ filet lace, B 38", L 26.75", (straps broken); 1 skirt slip w/ matching boudoir cap w/ ribbon rosettes, W 41", L 31", (0.5" & 0.25" spot stains lap & hem, ribbons on bonnet shattering), all good-fair.



### 146: ONE BOUE SOEURS & SIX UNLABELED CORSET COVERS, PARIS

USD 300 - 500

1910-1920s: 1 silk crepe de chine w/ embroidered feather stitch & lace insertions, B 40", L 15.5"; 1 snowflake crochet straps, edge & CF insert, B 40", L 17"; 1 silk & crepe w/ embroidered & lace insertions, B 34", L 18.5", (1 strap damaged); 1 silk satin w/ floral embroidery, drawnwork & geometric lace insertion, "Bou Soeurs", B 34", L 17.5", (1" CF hole); 1 china silk w/ brocade lace edges, insertions & straps, B 41", L 15.5", (fraying at SH); 1 silk crepe w/ faux filet insertions & ribbon straps, B 42", L 14.5", (missing ribbon at neckline); 1 silk crepe w/ wide lace band at neckline & lace straps, B 44", L 17.5", (missing ribbon at neckline) all very good- fair.

## Holiday Vintage, Couture & Textile Auction



### 147: FOUR EVENING & DAY BODICES, 1890-1903

USD 300 - 500

1 black silk taffeta w/ ribbed & spotted mesh overlay, pseudo military appliqué as epaulets & Hussar trim in pale blue wool, 1890s, B 34.75", W 24", L 20", (CF lining shattered, trim fraying, 3.5" tear in lining); 1 Henrietta Maria 1630s style fancy dress bodice in black & yellow velvet, B 26.5", W 22", L 19", (trim missing at neck, lace fraying, lining stained, 0.25" spot stain left sleeve); 1 ivory w/ inset chevron tucked chiffon yoke, hm bobbin lace covered stock collar & cuffs, label "Redfern, NY, London, Paris", B 35.5", W 22", L 19", (shattering esp. at sleeves, bones poking through casings & collar); 1 brown wool w/ floral & wheat embroidered 2-tone appliqué, B 32", W 23.5", L 16", (rusty hooks & eyes, appliques fraying) all very good-fair.



### 148: TWO BLACK CAPES, 1880s

USD 300 - 500

1 finely striped black silk taffeta w/ collar, capelet back & CF free floating extended panels all edged w/ French jet beaded passementerie, lined in crimson silk satin, SH-SH 16.5", L 12.5"-35.5", (slight bead loss, staining & light wear to lining, hooks & eyes rusty, light bead disease); 1 dolman style cape in ribbed silk w/ patterned cut velvet stripes & fur trimmings to collar, CF, slight bustle back peplum & sleeve edges, SH-SH 18", L 19"-28", (fur trim at cuffs & lapels cracked & worn, fabric worn around hooks & eyes) both good.



### 149: THREE LACE & EMBROIDERED BODICES, 20TH C

USD 300 - 500

1 pastiche bodice of various cream lace w/ metallic beads & trim, B 43, W 27.5", L 18.5", (light 0.5" spot stain left cuff & right of CB, re-made); 1 Alençon white lace w/ CF buttons, long sleeve blouse constructed of hm 19th, C B 35", W 30", L 23", (discoloration around collar, re-made w/ mm net lining); 1 entirely hm white cotton lawn aesthetic movement influence blouse w/ pin tucks, openwork & chikan embroidery, B 44.5", L 17"-28", (two 2" x 2.5" sections cut out of front hem) all very good.



### 150: TWO PURPLE SILK GOWNS, 1840s & 1860s

USD 300 - 600

3-pc gown in striped & spot patterned purple & lavender silk taffeta w/ purple silk velvet ribbon trim at collar, cuffs & detachable back ruffle w/ looped ribbon panache & CF bow, possibly half mourning c. 1865: B 33.5", W 23.5", L 17", skirt W 22.5", L 42.5"-54", bow L 10", (stains left sleeve, 3 missing closures, fraying CF W, shattering below W w/ stabilization, 2 tiny repairs); 1 light purple faux roller moire over patterned w/ 2 bodices, originally 1842-1846: dress B 34.5", W 27", L 54.5", (hem saver fraying, CF W modified, missing buttons), sleeveless bodice B 32", W 23", L 12.5"-17", (sleeves removed, fraying hem, damaged closure), long sleeve bodice B 30", W 23.5", L 15-18", (missing hooks & eyes, shattering) both fair.



### 151: TWO BROWN VISITING DRESSES, LISBON, 1880 & 1905

USD 400 - 600

2-pc tan & black wool & silk w/ diagonal grid pattern & woven sprig motif, bodice w/ stock collar, inserted yoke, midriff, SH sections of scarlet silk satin w/ black passamanterie lace overlay, c. 1905, W, SHs & CH, label "Lopes de Sequeira & Cia, Lisboa", bodice B 37", W 24", L 17", skirt W 25", L 42"-46.5", (red satin shattered throughout, bones broken & poking through casing, large stains to skirt, 1" x 0.5" hole CF above hem) fair; 1 brown linen weave silk w/ asymmetrical front closure, embroidered self & thread covered buttons, fitted sleeve, linen bobbin lace to collar, cuffs & tiered skirt drawn into CB puffed bustle w/ interior structural tapes, deep ruched cuffs, c. 1880, B 37", W 25.5", L 52", (buttons fraying, trim detaching 4") very good.



### 152: GREEN WOOL DAY DRESS, c. 1850

USD 300 - 600

Entirely hand made green wool dress w/ front yoke pleated trim extending to faux bertha at CB, velvet collar, black velvet ribbon w/ ruffle at belle sleeve cuff, around skirt w/ flat finished pointed tab flounce, escalier of self-edged bows at CF & back of sleeve bell, lined w/ glazed book linen, B 34", W 24", L 59.5", (velvet trim worn, tiny-small moth holes throughout, 2.5" x 3.5" & 0.5" x 3" light stains above hem & at B, seam opening for 7" right side W, light wear/ discoloration at underarms) good.

## Holiday Vintage, Couture & Textile Auction



### 153: TWA AIRLINE UNIFORM & BALMAIN COAT, AMERICA, 1940-1950s

USD 300 - 500

3 pc ensemble c/o blue skirt & jacket in seafoam blue wool, bound horizontal H pockets, white cotton blouse w/ notched collar, removable shank buttons, & military style toque for TWA, 1940-1950, label "Hamilton Cincinnati", jacket B 37", W 26.5", L 24.5", (stains to lining, buttons worn), skirt W 24.5", L 26.5", (cluster of stains near left SS), blouse label "Original Därmigene, New York", B 43", W 31", L 24", (stains to facing, tiny black spot stains left W, light brown spot stains throughout) all good; 1 wool 2-tone plain weave in navy & teal, 3 oversized faux wood button closures, lined in robins egg silk satin crepe, late 1950s label "Pierre Balmain for TWA", B 39.5", L 37", (minor wear to buttons, lining stains, small spot stain right B) very good.



### 154: TWO DALTON FOR TWA POPPY COLLECTION ENSEMBLES, AMERICA

USD 300 - 500

1968-1971: 1 tomato red raincoat w/ standing collar, ring pull zip closure, incorporated raglan SH cape, slit pockets to H, & matching banded head covering w/ TWA cast button, label "Created Exclusively for TWA by Dalton", B 43", W 47", L 38", (dirty, 4" dark line stains at hem), hood circ. 24", L 24"; 1 international landmark ink drawing & small geometric color accent printed cotton dress w/ self tie, 2 deep patch pockets, B 38", W 35", L 35.5", (light stains); 1 goldenrod jacket w/ gold button closure & faux half belt, B 36", W 34", L 22", (1 button missing & included, 2"x1.5" stains to cuff); striped short sleeve mini dress w/ mock turtle neck, w/ self belt, B 35", W 29", L 35", (2"x0.5" stain skirt, tiny stains, leather on belt cracked) all good-fair.



### 155: TWO HERMAN FOR TWA AIRLINE ATTENDANT UNIFORMS, AMERICA,

USD 300 - 500

Both early 1970s: 1 belted jacket & trouser in ultramarine blue linen weave, B 37.5", W 37", L 25.5", (buttons worn), trouser W 26.5", L 40.75", inseam 29", (pale spot stains right leg, 0.75" tear back left leg), matching knitted & ribbed short sleeve mock turtleneck undershirt, B 29.5"-44", L 25.5" & TWA runway scene scarf, 26"x27.5", label "Stan Herman for TWA" & "Trevira Texture"; 1 "TWA" monogram print bodysuit, label "Youthcraft/Charmfit", B 39", L 28.5", (tiny spot stains throughout); 1 pair pinstripe slacks in taupe w/ blue, red & yellow stripe, label "Stan Herman for TWA", W 26", L 40.5", inseam 28.5", (1.5"x1.5" lap stain, 1"x1" stain above left leg hem, small spot stains throughout) all very good-good.



### 156: BRANIFF AIRLINES STEWARDESS SKIRT SUIT, 1977-1982

USD 200 - 400

Both pieces taupe twill: 1 CF button jacket w/ self tie belt, B 37", W 34", L 25", (stains to right cuff) very good; 1 A-line skirt w/ left side zipper, W 25", L 28", excellent.



### 157: VALENTINO FOR TWA ENSEMBLE, AMERICA, 1971

USD 300 - 500

All in brown chevron knit & w/ "V" logo gold tone button: 1 shaped tunic, round collar w/ decorative 2 "V" button tabbed yoke, short sleeve w/ 2 "V" buttons, faux slash pockets to H, matching self covered belt, B 36.5", W 30.5", L 30", (buttons lightly worn & 1 missing), matching trouser w/ elastic W, W 28-32", L 39.5", inseam 30", (pulls throughout); 1 button up, belted mini dress w/ deep V-wing collar, short cuffed sleeve, button patch H pockets extending to W belt loops w/ decorative "V" button, CF "V" button closure, B 36.5", W 30", L 35.5", (buttons worn & missing, pilling at back W) all very good.



### 158: PURPLE VALENTINO FOR TWA ENSEMBLES, AMERICA, 1971

USD 400 - 600

All in purple chevron knit & w/ "V" logo gold tone buttons: 1 button up, belted mini dress w/ deep V-wing collar, short cuffed sleeve, patch H pockets extending to W belt loop w/ decorative "V" button, CF "V" button closure, B 38", W 31", L 37", (small pulls); 1 overcoat w/ tabbed patch pockets, trench style self tie belt & collar, B 38", W 31.5", L 39", (pulls, 1 cuff button dented); 1 pair slacks, W 26-30", L 39.5", inseam 29.5"; 1 long sleeved jacket w/ reverse collar, CF button closure, princess seam to patch pocket w/ single decorative button, B 38.5", W 35", L 30.75", (1 button missing) (all w/ light wear to buttons); 1 purple & cream "V" logo scarf, 31"x31", (discoloration, hem undone 1 corner) all good-very good.

## Holiday Vintage, Couture & Textile Auction



### 159: THREE YAMAMOTO LADIES TOPS, JAPAN, 1980-1990

USD 300 - 500

All w/ label "Yohji Yamamoto": 1 brown leaf coat dress in stylized kelp motif in shades of brown, short dolman sleeve, 2 H patch pockets, CF button closure, B 52", L 46.5", (2.5" thin white line left of CF, tiny pulls across torso, tiny white dots) good; 1 brown & gold jacket in banana leaf print, notched shawl collar, 2-pc set in sleeves, single button closure, CB seam pattern interruption, B 44", L 33.5", very good-excellent; 1 blouse in blue, black & white imitation bakit w/ stylized avian & Chinese wave motif, shirt collar, oversized patch pocket to left B, elbow length 1 pc set in sleeve, strong SH, zip opening at CB & zip at back hem for sculptural conversion, B 49", L 34.5", very good-excellent.



### 160: TWO YOHJI YAMAMOTO ENSEMBLES, JAPAN, 1980-1990s

USD 400 - 600

All w/ label "Yohji Yamamoto": 2 sleeveless tunic w/ scoop neck: 1 cosmic clouds motif in shades of blue & black, B 44.5", L 28.5"; 1 rooster & leaf motif in shades of brown & gold, B 43.5", L 29"; 1 blue jersey mini skirt w/ jean referenced belt loop & attached knee length skirt in leaf motif w/ prominent rooster shades of blue & white w/ left H & back open drape, W 32", L 32"-36.5", (no belt); 1 mottled leaf, vegetal & large rooster motif in shade of brown & white on black ground, CB external applied zipper & draped bottom, W 32.5", L 32"-41", (no belt), all very good-excellent.



### 161: TWO PLEATS PLEASE ISSEY MIYAKE TOPS, JAPAN, MODERN

USD 200 - 400

Both black: 1 jacket w/ double convertible ruffled shawl collar of fine cotton mull continuing to top of CF button closure, label "Issey Miyake", B 48", L 24"; 1 sleeveless blouse in 2 bias cut panels for chevron front & back, double convertible ruffled shawl collar of fine cotton mull continuing along CF button abutted closure for perpendicular ruffle, B 38", L 20.5"-23", both excellent.



### 162: THREE YAMAMOTO & ONE MIYAKE SEPARATES, JAPAN, MODERN

USD 300 - 500

1 man white summer jacket in cotton twill sateen, cross over front w/ paired MOP buttons, slit pockets, 4 button closure at sleeve, label "Y's", CH 44", L 29", (2 tiny wear holes left sleeve); 2 panel silver lamé skirt w/ 2 slit pockets to SS, elastic W band, label "Yohji Yamamoto", W 31-34", L 34"; 1 black cashmere draped sweater w/ double diagonal gashed front w/ convertible tabs, label "Y's Workshop, Yohji Yamamoto", B 52", L 23"; 1 muslin blouse w/ round neckline, flat double tucked hidden front button closure, left B side opening slit pocket, label "Issey Miyake", B 43", L 26", (tiny dark spot stain back of collar) all very good.



### 163: TWO ISSEY MIYAKE LADIES SUITS, JAPAN, MODERN

USD 400 - 600

1 grey pant suit, jacket w/ diagonally seamed fullness at back for tulip shape, trouser w/ deep front pleats & full H, label "Issey Miyake", B 43", L 31.5", pant W 27", L 40", inseam 28.5", (few tiny spot stains CF W) very good; 1 wool blend skirt suit in twill woven blue & black stripe, asymmetrically buttoned CF closure & draped rear panel, diagonal slash pockets, kilt inspired wrap skirt w/ symmetrical side buckle closure, label "Issey Miyake", B 44", L 26"-32.5", skirt W 26", L 30.5", (1 button scratched, tiny spot stain lap, few tiny pulls) very good.



### 164: OSCAR DE LA RENTA EVENING GOWN, 1980s

USD 300 - 600

1 seafoam crepe chiffon strapless evening gown w/ geometric embroidered, beaded, sequined & baquette crystal embellished bandeau bodice, layered chiffon skirt in seafoam, ivory & celadon, deep pleats to CB below zip closure, ankle length w/ slight train, w/ 50.5" x 80.5" matching crepe chiffon shawl, label "Oscar de la Renta", B 36", W 29", L 56.5", (1.5" tear to undertrain at back hem) very good.

## Holiday Vintage, Couture & Textile Auction



**165: ROSE LASH COUTURE EVENING DRESS, NEW YORK, c. 1950**

USD 300 - 500

Cream twill silk w/ silk satin decorative edged petals appliquéd in swags, festoons & pyramidal arrangements to bodice, SH straps & CF above hem, smocked silk georgette sweetheart neckline highlighted w/ pearlized beads & at hem highlighted w/crystal teardrops, pick stitch let out box pleats to W line, label "Rose Lash, New York", B 32.5", W 26", L 43", (holes to georgette esp. at hem, light spot stains, shattering at underarms) fair.



**166: SILK & LAMÉ DRESSING GOWN, 1930s**

USD 400 - 600

Trained dressing gown in geranium & ox eye daisy red, pink & lamé pattern on silk satin ground, small shawl collar, open CF to W, narrow cross over tab front belt w/ 2 self-covered dome buttons, 1930s, B 37", W 28", L 56.5"-68" (1.5" x 1" darned repair CF above knee, few tiny spots of shattering at right sleeve, SHs lightly worn, 1" repair left SH, 3" repair right of W) good.



**167: ARDANSE HOSTESS GOWN, PARIS, 1930s**

USD 400 - 600

Silk satin hostess gown w/ bias cut hanging medieval sleeve, bias cut wrap front extending to self-tie at CB, asymmetrical trained hem w/ right front side slit, print possibly by Raoul Dufy, 1930s, label "Paris Ardanse, 32 Rue de la Bienfaisance", B 40", W 31", L 69", (large cluster of stains right sleeve, small pulls & scuffs to fabric throughout, 1" seam opening back right SH, dirty w/ light stains around hem, three 0.5" burn holes right train) fair.



**168: MILITARY INSPIRED LADIES BROADCLOTH COAT, c. 1915**

USD 300 - 500

1 taupe fine wool broadcloth, scalloped collar, cuffs & pockets edged w/ silk faux military braid & multiple rows of soutache, asymmetrical front closure w/ cloth covered buttons, stylized fabric faux frogging extending from front princess seaming to mid CB, full sleeves gathered into SH & w/stitch down pleats above cuff, pale pink half silk lining, B 40", L 49", (lining shattering at SHs & neckline, tiny-small moth holes & snacks throughout, wear & light staining to buttons & loops) fair.



**169: TWO SUMMER TEA DRESSES, FRANCE, 1930s**

USD 400 - 600

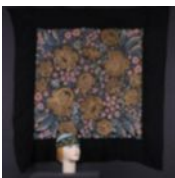
1 cream chiffon w/ impressionist multicolor floral & blue paint print, bodice w/ finely ruched gathering over SH to slit pleated sleeve & gathering into rows of horizontal pleating at forearm, box pleated jabot neckline, inverted wide W yoke w/ narrow box pleated ankle length skirt, attached wide self-tie w/ ruching for front side tie, B 46", W 36", L 53", (broken ties for W sash) very good; 2-pc georgette in cream, orange & green floral print on black ground, sleeveless dress, SH yoke extended to front tie for full bow, long flared stitch down pleating at CF, to jacket sleeves & back side skirt godets, France, B 39", W 30", L 46", (basting stitches for pleats present) excellent.



**170: DESIGNER SILK VELVET EVENING COAT, FLORENCE, 1920s**

USD 300 - 600

Peach silk velvet evening coat beaded w/ ruched asymmetrical collar to extended right side draped scarf, left side snap & button closures, wide sleeves w/ gathering to wrist, silvered glass spherical & bugle beads in fan like florals w/ stylized fruit & foliate motif, label "Giuseppina Del Bour, Firenze", B 50", L 46.5", (hem undone CB, 2 tiny snacks front left SH, 1 to lap & smattering to lower back, 1.5" stain front left underarm, staining across left sleeve & low back, 0.5" hole left sleeve, button loop at collar cuff broken) fair.



**171: TWO NOVELTY ACCESSORIES, 1930s**

USD 300 - 500

1 Egyptian style silk brocaded ribbon bandeau headdress w/ affronted asps of silver faceted bullion & painted wood, amber colored glass beaded ear fringe, 1930s, 1.5"-3.25" x 23", (paint fading, metal oxidizing) very good; 1 black chiffon over gold patterned silk shawl w/ tambour embroider ombré silk floss floral & gold lame abstract blossom appliquéd & edged w/ fine gold lamé cord, black chiffon surround, backed w/ blue silk velvet, 1920s, 50" x 52", (tiny-0.25" holes to chiffon) good.

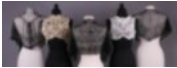
## Holiday Vintage, Couture & Textile Auction



### 172: THREE METALLIC EMBELLISHED EVENING ACCESSORIES, 1920s

USD 300 - 500

1 silver on white ground asuite shawl in geometric motif, 23" x 88", (tarnish, tiny-0.5" holes to net, general discoloration) good; 1 fancy dress belt worked w/ gold metallic woven & laced cord incorporating green silver velvet ribbons & panache w/ tassel & miniature cut out metallic crescent moons, Wd 1.5"-2.5", L 29.5", (oxidation to gold braid on interior, fraying to one end) good; 1 chainmail evening purse, "Whiting & Davis Co.", 4" x 6.25", (tarnish to frame) very good.



### 173: TAPE & NEEDLE LACE BOLEROS & SHOULDER CAPES, 1860-1910s

USD 300 - 500

1 black silk embroidered net & chemical lace flounced SH cape, c. 1900, Wd 62.5" L 19", (holes in net, 2.5" & 4" seam openings, broken brides, top edge hem mostly unfinished) fair; 1 ecru cotton tape lace w/ needle lace fillings, 1900-1910s, L 9"-20", (few broken brides) very good; 1 black handmade Maltese lace SH cape, 1860-1870, (broken brides or openings between lace element: 3.5" at edging, 2" at CB & 1.5" at 1 side) good; 1 white tape & needle lace bolero, 1900-1910s, L 11.5"-13.5", very good; 1 black glazed cotton bobbin lace SH cape, c. 1860-1870, Wd 45.5", CB L, 15", (broken brides, 2" tear right edge) good.



### 174: THREE EMBROIDERED & LACE PEIGNOIRS, 1900-1930

USD 400 - 600

1 sleeveless peignoir w/ Carrickmacross lace edged in chemical lace, 1910-1920, B 60", L 52", (0.25" hole in net right H) very good; 1 trained peignoir w/ machine tambour flowers, leaves & tendrils, c. 1910-1930, B 40", L 77.5", (fraying at edges) very good; 1 sleeveless peignoir w/ embroidered Pina, embroidered tulle & filet lace insertion & edging, 1900-1910, B 45", L 44", (tiny-small holes throughout net, 2" repair right of CF) good.



### 175: TWO APPLIQUED SHAWLS, MID-LATE 19TH C

USD 300 - 500

1 Brussels appliqué net shawl, 1860-1890, CB, L 49", W 50", (tiny-small holes throughout, spot stains at hem); 1 Heathcoat Brussels needlepoint appliqué w/ tambour outlines & details, 1850-1865, 114" x 45", (period mending) both good.



### 176: TWO EMBROIDERED VEILS, 1860-1920

USD 300 - 500

1 Carrickmacross ivory veil w/ ruching at CB for shaping around head & SHs, 1860-1880, L 77", Wd 41", (train cut at end, mending & holes mostly to center); 1 hooded veil w/ double cascade in cream tape lace & braid appliqué in stylized fleur-de-lis w/ tambour details, 1890-1920, L 59", each tail Wd 22.5", (tiny-0.25" spot stains, 4", 0.75" & 1.25" seam separations b/t ends & trim, 17" of trim separation top of veil at "V" below bonnet) both good.



### 177: TWO OVAL EMBROIDERED OR TAPE LACE VEILS, 1890-1920

USD 300 - 500

1 w/ chainstitch embroidery on cotton tulle, 1890-1920, Wd 51", L 112", (light fraying at edges); 1 w/ tape lace appliqué, possibly Belgium, early 20th C, 72" x 88", (few holes) both very good.



### 178: POINT DE GAZE VEIL, 19TH C

USD 300 - 500

1 Brussels mixed lace & point de gaze lace veil, 16"-77" x 58", (tiny-1" holes throughout, 16" cut to edge, tiny-1" spot stains) fair.

## Holiday Vintage, Couture & Textile Auction

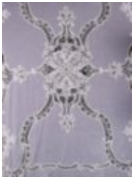


### 179: TWO NEEDLE LACE BEDCOVERINGS, EARLY 20TH C

USD 300 - 500

1 cream Italian needlelace bedspread, varied grid fillings w/ picot accents in stylized acanthus leaves, garden florals & insects, 79" x 113", (added reinforcement at center medallion, slight discolorations) very good; 1 white heavily corded needlelace on finely stitched grounds w/ scene at center depicting Cupid on floral cloud & Psyche suspended w/ peacock, c. 1900, 95" x 90", excellent.

---



### 180: TWO SUMMER BEDSPREADS, EARLY 20TH C

USD 300 - 500

1 cotton mull w/ faux fillet Shamrock center & surrounding Battenburg tape lace floral scrolls extending to deeply flounced edge, 81" x 119", (0.25" hole on plain edge) very good; 1 net w/ tape edged flounce & Renaissance classical architectural motif center panel, 86" x 94", (several large light stains to bottom ruffle, small holes throughout) good.

---



### 181: THREE TABLE OR PIANO COVERINGS, EARLY 20TH C

USD 300 - 500

1 cotton w/ cutwork & inserted fillet squares & diamonds, bobbin & fillet lace border w/ tassels, 57.5" x 65" w/ 2" tassels, very good-excellent; 1 tasseled linen baby grand piano cover w/ classical Greek scene of dancers & musician w/ cutwork, bobbin & fillet lace insertions edged w/ bobbin lace in arches w/ tassels, 46"-65" x 70", (missing & messy tassels) very good; 1 demilune table cover w/ heavily corded passementerie w/ corded & heavy cloth inserted floral & foliate motifs, triple tassels separated w/ double suspended crochet balls, 47" x 23" w/ 4.5" fringe, (broken brides, messy tassels, two 0.25" holes 1 side) good.

---



### 182: SET OF DOOR SURROUNDS, ITALIAN, 19TH C

USD 300 - 500

2 matching hemp embroidered fillet & bobbin lace door hangings w/ cornucopia & adorsed Griffins w/ bound & unbound cotton tassels, 119" x 60" w/ 9.5" fringe & 121" x 61" w/ 11" fringe, (both w/ fraying & dirty edges, messy or missing tassels) both good.

---



### 183: SIX LENGTHS OF DEADSTOCK YARDAGE, 20TH C

USD 300 - 500

1 Indian cotton dimity yardage, 26.75" x 7+ yds; 1 wider stripe Indian cotton dimity yardage, 28" x 5 yds, (5"x5.5" swatch removed from corner, dirty at edges); 1 cotton lawn w/ Philippine floral embroidery & cut work, 21" x 6 yds, (tiny holes to selvedge); 1 Indian plaid cotton dimity yardage, 42.5" x 76.5", (raw ends); 1 Indian Chikan hand embroidered panel, 42.5" x 88", (light pulls to embroidery); 1 Indian checked cotton dimity yardage, 26.25" x 5+ yds, (ends fraying) all good-very good.

---



### 184: EMBROIDERED COTTON TULLE DEADSTOCK YARDAGE, EARLY 20TH

USD 300 - 600

1 richly embroidered panel w/ padded satin, eyelet, faux knots & cutwork floral embroidery, 34" x 6 yds, 1 ft, (few tiny-small spot stains, raw ends); 1 richly embroidered w/ padded satin, needle pint, French knots & cutwork w/ needle lace brides, 37.5" x 4+ yds, (few tiny-small holes in net, raw ends) both very good.

---



### 185: DEADSTOCK FABRIC, 1900-1915

USD 300 - 500

5 white embroidered panels: cotton batiste w/ early Schiffli embroidery, c. 1910-1915, 5 yds; 1 cotton voile w/ embroidery to 1 corner, 2 yds. 28"x33"; 1 pre-embroidered uncut panel for dress, Philippines, 4 yds. 8" x 44"; 52" x 36"; 1 unpicked skirt of cotton batiste w/ wide band of Swiss embroidery at hem, 1900-1910, 3.5 yds, (1 large repair, sm. holes) all good-excellent.

---

## Holiday Vintage, Couture & Textile Auction



**186: ONE SKIRT & ONE SHAWL, 1790-1810 & 1850s**

USD 300 - 500

1 chain stitch embroidered in shades of white, green & mauve voile skirt w/ 3 scalloped ruffles, flame stitch & spot floral motif, 1850s, (holes up to 1.5", light brown stain) good-fair; 1 silk & cotton shawl w/ metallic thread brocade silver sprigs, 1790-1810, 78"x30", (light stains, period repairs, cut at ends) good; t/w Indian muslin dress part c. 1800.

---



**187: TWO WALL OR FURNISHING PANELS, EARLY 20th C**

USD 300 - 500

2 matching panels of brocade ogive motif w/ enclosed pineapple in cream & gold cotton & hemp, 27" x 59" & 1, 89" x 68.5", (both w/ shattering & fraying at edges, 1 w/ 7.5" tears, 15.5" x 19.5" piece removed right side, 11.5" & 8" tears, 20" x 12" piece removed left side, 6.5" year bottom edge, fraying) both fair. From the Estate of Porter Edward Sargent.

---



**188: ORNAMENT D'EGLISE PANEL, c. 1700**

USD 400 - 600

Gold metallic weft in ornament d'eglise w/ flowers & foliate on red silk satin ground, metallic warp threads on selvage, backed in red silk taffeta, edged w/ gold galloon, 42.25" x 76", (stains & tiny holes to lining, tarnished) very good. From the Estate of Porter Edward Sargent.

---



**189: GOLD BROCADED SEA DRAGON MEDALLION HANGING, JAPAN, 18th**

USD 300 - 600

Gold brocaded enclosed dragon medallion w/ wings & webbed tail & cloud motif, in three 25" widths, brocaded w/ gilded paper on black silk satin ground, backed w/ ramie, 29.5" x 76", (very fragile & shattering) poor. From the Estate of Porter Edward Sargent.

---



**190: SILVER BROCADED PHOENIX MEDALLION PANEL, CHINA, 18TH C**

USD 300 - 600

Silver gilded paper ground w/ Phoenix medallion & cloud motif, for furnishing or possible bed hanging, 27.5" x 70.5", (wear throughout, backing stained) good. From the Estate of Porter Edward Sargent.

---

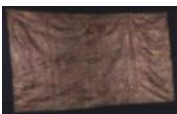


**191: SIENNA SILK KESA, JAPAN, EDO PERIOD**

USD 300 - 600

Sienna silk twill weft brocaded w/ gilded paper in green, cream, black & brown silk w/ dragon motifs, attached SH strap w/ endless knot, made of Chinese silk, probably 17th C, 52.5" x 19", (mold, thin ties fraying, 1.25" tear at wide strap attachment) fair. From the Estate of Porter Edward Sargent.

---



**192: DEEP BLUE KESA, JAPAN, EDO PERIOD**

USD 300 - 600

Brocaded gilded paper, brown & green stylized scrolling floral & foliate w/ interlocking square motif on deep blue satin ground, w/ attached self patch pocket, probably 18th C, 76" x 40.5"-49", (shattering, fading, staining throughout, mold) fair. From the Estate of Porter Edward Sargent.

---



## Holiday Vintage, Couture & Textile Auction



**193: LADIES SILK ROBE, CHINA, EARLY 20TH C**

USD 400 - 600

Blue silk satin ground w/ satin stitch ombré silk embroidery in floral & auspicious symbol motifs, CF frog closures, brocaded & bias cut border to collar, CF opening, hem & side slits w/ elaborate finial, contrasting white turn back silk cuffs embroidered w/ multicolored florals in Peking knot & satin stitch, contrasting blue silk lining, CH 57", L 40.5", (lining torn, embroidery fraying, 1.5" & 3.5" tear to left trim, cuff torn & badly worn/frayed) good. From the Estate of Porter Edward Sargent.

---



**194: MANS NATIONALIST CEREMONIAL JACKET, ROMANIA, EARLY 20TH**

USD 300 - 500

Black wool broadcloth jacket encrusted w/ colored beads over silver & lacquered metallic sequins, gold & silver metallic braid, brocaded ribbons, silk floss hand embroidered black velvet applied panels & red wool broad cloth insertions, fur trim to collar, CF opening, cuffs & hem, red, white & blue single crochet cords to CF representing national pride & cooperation with Europe, printed blue cotton lining in style of Chinese silk machine stitched through layers, CH 45", L 34", (missing beads, sequins, fur & fringe, tarnish) good.

---

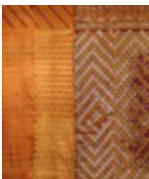


**195: EARLY BATIK, KOSSU TAPESTRY & KESA FUROSHIKI CLOTH**

USD 300 - 500

1 early Batik Javanese wax cloth, unfinished, early 20th C 42.5" x 83.5", (stains throughout, tiny holes w/ some repaired, bit of black residue) good; 1 painted Kossu w/ river scene, Japanese, 72.5" x 18", (stained, mold, paper stapled to back of 1 corner, kossu elements separating) fair; 1 navy silk satin w/ rows of multicolored dragons interspersed w/ cloud motif & auspicious symbols, probably 18th C, 22" x 23.5", (stained, areas of wear) good. From the Estate of Porter Edward Sargent.

---



**196: TWO PHULKARI EMBROIDERED SHAWLS, INDIA, EARLY 19th C**

USD 300 - 500

Both silk on cotton ground: 1 embroidered gold & orange diamond patterns, 56.75" x 8 ft, (fraying at ends, 0.25" hole to center of 1 end) good; 1 gold, white & celadon diamond patterns, 57" x 8 ft, 2.5", (embroidery worn & missing, 0.75" x 0.75" black stain center, 1" x 1" Z shaped tear to 1 end, 0.5" hole near 1 long end, 1.5" tear to short end) fair. From the Estate of Porter Edward Sargent.

---

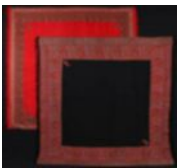


**197: THREE MOHAIR VELVET FURNISHING PANELS, 19TH C**

USD 300 - 500

Three panels all of same material: 51.5" x 88", 52" x 85", 19"-47.5" x 48"-86.5", (fraying edges, 1 w/ large areas of discoloration & 1.25" hole near center, 1 w/ 1 corner removed & 1" & 2.5" holes on uncut half, fraying, 1 selvedge edge cut) all fair. From the Estate of J.P. Upham.

---



**198: TWO SQUARE PAISLEY SHAWLS, KASHMIR, MID 19th C**

USD 300 - 500

Both w/ traditional twill woven traditional borders, fronted & adorsed boteh motifs & inserted boteh into ground at 2 inner corners, center of fine twill woven wool, 2 edges bordered w/ twill wool band incorporating self twisted fringe: 1 red w/ multiple borders, 62.5" x 60.5", (tiny-1" moth holes, fringe worn & fraying) good; 1 black w/ double border, 67.25" x 64.5", (wear to fringe) very good. From the Estate of J.P. Upham.

---



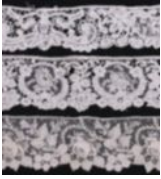
**199: ELEVEN PIECES ALENÇON & BRUSSELS MIXED LACE, 19TH C**

USD 300 - 500

4 pieces Alençon: 1, 5.5"x44", (tiny-1.25" holes); 1, 7.75" x 2+ yds, (tiny-1"holes); 1, 8" x 31.5", (few tiny holes); 1, 8.25" x 3+ yds, (few tiny-small holes & pulls, 1 end dirty); 6 pieces Duchesse & Brussels Mixed lace: 1, 4.5"x56.5", (broken brides); 1, 6.5" x 78.75", (top edge band missing for 48", tiny-small holes in net); 1, 6" x 33.5", (broken brides); 1, 6" x 23.5"; 1 collar w/ snaps, 6.5" x 38.5-63.5", (broken brides, oxidation); 1, 7" x 3 yds, (broken brides); 1, 6.5" x 78.75"; 2 identical pieces Brussels needlepoint appliqué, 10.5" x 13.5" & 16", all fair-very good.

---

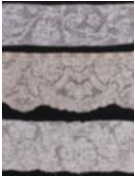
## Holiday Vintage, Couture & Textile Auction



### 200: POINT DE GAZE & BRUSSELS MIXED LACE ELEMENTS, 19TH C

USD 300 - 500

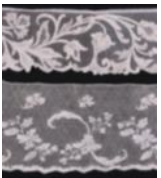
22 pieces of Point de Gaze, including collars & cuffs, all Wd 1.5"-3.75", L 12"-48", (some w/ discoloration, holes in range of tiny-2.25", fraying at edges) fair-very good; 4 pieces Brussels mixed lace, Wd 2-6.25", L 11.75"-20.5", (all w/ fraying at edges &/or holes tiny-1") all fair- good; 1 pc, Brussels needlepoint appliqué, 4.25"x41.25", (raw ends fraying) very good; 4 pieces thin white ribbon, 0.75" x 7.75"-8.5", (discoloration)



### 201: LOT OF FLEMISH BOBBIN LACE, 17TH-18TH C

USD 300 - 500

3 pieces Flemish Valenciennes lace, all 17th-18th C: 1 wide piece, 10" x 3+ yds, (some holes); 1 long medium width, 7.5" x 6 yds, (some holes, light fraying at edges); 1 four-piece seamed together, c. 1700-1725, 1.75"-2.25" x 60", (discoloration, tiny spot stains, 3 holes, 1.25", 0.25" & 0.5"); 2 round Valenciennes, c. 1700-1720, 2.5" x 26", (discoloration & spot stains) & white w/ uneven scallops, 2" x 16.5", 1 Antwerp bobbin lace, c. 1700, 2.75" x 28.75", (spot stains, light fraying & discoloration); 1 Mechlin, c. 1700, 1.75" x 20.25", (pulls, small holes) all fair-very good.



### 202: MILANESE, MECHLIN & ARGENTAN LACE YARDAGE, 17TH-19TH C

USD 300 - 500

1 Mechlin, 19th C, 9.5" x 2+ yds, (tiny-1.25" holes, fraying edges); 1 Mechlin, 18th C w/ net flounce at edge, 15" x 6 yds, (flounce added later & missing for 76.5", tiny-1" holes, tiny stains center); 1 Milanese curved flounce, 19th C, 9.5" x 41"-60", (spot stains, 2.5" repair left end, tiny-0.5" holes); 1 Milanese, 18th C, 9" x 3 yds, (dark spot stains, tiny-small holes); 1 Milanese, 17th C, 3.5" x 43"; 1 tape lace, 19th C, 4" x 61.5", (fraying edges) 2 lengths Point de Paris, 1 flat & 1 zigzag edge, 5.25"x55.25" & 5.25"x54.5", (light discoloration); 1 Argentan, early 18th C, 4"x3+ yds, (tiny spot stains) all fair-good.



### 203: GENEROUS LOT OF EVENING GLOVES, FRANCE, ITALY & AMERICA

USD 300 - 500

Early-mid 20th C, all w/ palm circumference 5"-6.75": 1 black suede, L 22-25", (worn & dirty); 1 short black leather, L 14.5"; 1 black leather w/ plastic loops, L 15.25", (0.5" & 0.25" stain to right); 1 black leather w/ buttons inside wrist, L 23", (wear, stains to lining); 1 olive, L 15.25"; 1 white, label "Kayser", L 26.5", (spot stains, repair right hand); 1 light blue, label "Gutman Lann Gloves", L 23"; 1 light pink, label "Wear Right", L 23.5", (1 button missing on each); 1 white leather w/ straps, label "Fownes London", L 21.5", (stains, imprints from snaps); 1 white leather w/ buttons, L 23", (light stains); 1 magenta, label "Shalimar", L 27"; 1 black mesh, label "Van Raalte", L 22"; 1 sage green, label "Gutman Lann Gloves", L 24", all fair-very good.



### 204: DRIVING OR SPORT GLOVES, 1940-1960s

USD 300 - 500

All w/ palm circumference 5.5"-7.25": 1 white leather, label "Capretto", L 9.25", (spot stains); 1 coral leather, L 7.75"; 1 red leather, label "Max Navers Gloves", L 9.25", (dirty, discolored, crumpled); 1 longer black w/ white stitching, label "Hansen 61/4 Gloves", L 10", (tiny hole left wrist); 1 navy & white leather, L 9", (stained & discolored); 1 brown leather, label "Jacobson's Genuine Deerskin", L 9.5"; 1 tan, L 8.75", (wear, few stains, sticker residue inside); 1 black w/ red trim, L 9.5"; 1 short black w/ white stitching, L 7.75", (repairs to most fingers); 1 navy leather w/ white stitching, L 9.75", (wear, 0.5" seam opening right wrist); 1 black leather w/ wrist buttons, L 8.25", (tiny hole left wrist, lining stained) all fair-very good.



### 205: MITTENS & GLOVES, 1940s

USD 300 - 600

All w/ palm circumference 5"-7": 1 black suede w/ gold cuffs, L 7", (sticker residue inside right cuff, wear to gold); 1 navy leather w/ embroidered flowers, L 12", (fingertip stitches fraying, sticker residue inside left glove, right cuff distorted); 1 black fabric w/ beads & rhinestones, label "Made in British Hong Kong Expressly for Gimbel's", L 15.5", 1 black velvet & gold mittens, L 9", (4.5" seam opening to right, wear to leather); 1 black suede w/ gold scalloped details, label "Elvette Royal by dawnelle", L 14.5"; 1 maroon suede w/ dots, L 10.25", (wear) all good-very good.

## Holiday Vintage, Couture & Textile Auction



### 206: CARDIN & CASHIN GLOVES, FRANCE & AMERICA, 1960s

USD 300 - 600

All w/ palm circumference 6"-6.75": 1 tan leather w/ black patent leather scalloped cuffs, label "CrÃ©ation Pierre, Cardin Paris Made by Aris", L 9.5", very good; 1 Bonnie Cashin saffron suede w/ iconic toggle closure, label "Gloves by Superb", (buckles worn, light stains) good; 1 maroon w/ eagle buttons, L 8.75", (buttons oxidizing, stains); 1 black w/ wrist bows, L 8.25", (2 tiny spot stains); 1 dark brown w/ fold over cuffs, L 8.75"; 1 black w/ larger wrist bows, label "Kayser Leatherette, Made in Philippines", L 8.5"; 1 brown w/ leather embroidery, label "Wear Right, Made in Western Germany", L 8"; 1 green, L 8.75", (discoloration, wrists stained); 1 light brown w/ half bow & button, label "Shalimar, Made in USA", L 9", all others fair-very good.



### 207: WEDDING GARMENTS, CLAREMONT NEW HAMPSHIRE, 1864

USD 300 - 500

2 ivory silk organza over glazed linen or cotton: 1 wedding bodice reverse pleat ribbon trim in blue & white, B 41.5", W 29.25", L 18.5", (underarm stains, seam wear, lace added & damaged, tiny spot stains) good; 1 plain w/ silk satin ribbon epaulette back SH, B 38.5", W 26.75", "L 18.5", (underarm stains, 4.5" & 6.5" tears to CB, 1" tear CF collar, 1 satin ribbon undone, 0.25" spot stain CB) fair; 1 pair wedding slippers, label "Este, Paris", L 9.5", Wd 2", Ht 2", (light wear soles) excellent; 1 pair silk stockings, L 8.5", Ht 20", (stains & discoloration, tiny-0.25" holes, runs) fair; 1 cirlet of paper orange blossoms, circ. 22", (worn & missing floral, elastic dirty & broken) fair; 2 glazed & embossed calling cards, "Mr. & Mrs. J.P. Upham".



### 208: TWO PAIR BOOTS & ONE PAIR EVENING SLIPPERS, 1850-1870

USD 300 - 500

1 pair ladies chameleon flats in brown glazed kid w/ cutout vamps & blue silk satin underlay w/ fine chain stitch edging & decoration, silk lining, c. 1855-1865, label "Este, Paris", L 9.5", Wd 2.5", Ht 2.5", (light wear to binding & trim, lightly worn) very good; 1 pair brown silk twill Adelaide boots, 1850-1855, label "Kimball & Wight, Boston", L 10.25", Wd 2.25", Ht 4.5", (laces damaged, 3 tiny holes) very good; 1 pair child's bronzed kid button up boots, 1865-1870, L 7", Wd 2", Ht 6.5", (wear to buttonholes, light wear soles & toes, leather creased, tiny hole both heels) good; t/w 3 pair socks & 1 glazed kid flats w/ buckles. From the Estate of J.P. Upham.



### 209: TWELVE PAIR SOCKS & STOCKINGS, 1840-1930

USD 300 - 500

All w/ foot length 7.75"-10", Ht 21.5"-31", thigh circ. 6.5"-14": 1 cream knit patterned silk, (spot stains, pulls at cuffs); 1 cream w/ purple embroidery, (repairs & moth holes to feet); 1 sage green, label "Mills Hosiery", (discoloration, label tearing); 1 pink w/ thigh tabs, label "Nightingale Hosiery", (discoloration); 1 cream w/ red stripes at cuffs, (pulls, discoloration & stains); 1 black, label "Peerless Hosiery"; 1 black, label "Belnord Hosiery"; 1 black, label "Genuine Full Fashioned"; 1 white fishnet; 1 black w/ black embroidery, (tiny white spot stains feet, embroidery pulls, tiny moth holes); 1 black w/ white & green embroidery, (2" run 1 foot) all very good-fair.



### 210: DEADSTOCK STOCKINGS, 1950s

USD 300 - 500

2 pair "E&W Cinderella", 1 open, foot L 9.75", thigh Wd 14", box 7"x10"x0.75", (wear to corners edges & staining to box, discoloration to fold lines) 1 pair good, 1 pristine; 2 pair "Schiaparelli", 1 open, foot L 9.5", thigh Wd 15", box 7.5"x9.5"x0.75", (scratches to box) stockings all excellent; 3 pair "ArtKnit Select Hosiery", box 9.75"x7.25"x0.75", (wear to corners & edges, creased) all excellent-pristine; 3 sets "Best Wear Hosiery", 1 open, foot L 10.75", thigh Wd 14", box 7.25"x2.25"x1", (wear to corners, creased) all excellent-pristine.



### 211: FIVE BONNIE CASHIN FOR COACH HANDBAGS, AMERICA, 1960s

USD 300 - 500

All w/ thin, double narrow stitched loop handles, four brass knobbed feet, multicolored striped cotton interiors & label "Bonnie Cashin" & "Coach": 3 w/ attached side coin purse: 1 brown, 7.75" x 2.5" x 10.75"; 1 black, 7.5" x 2.5" x 9.5"; 1 cream, 7.75" x 2.5" x 10.75"; 1 mustard, 6.5" x 3" x 2.5"; 1 orange, 6.75" x 3.25" x 11.75", (all w/ scratches & tarnish to metal & some wear to leather) 1 orange, 6.75" x 3.25" x 11.75", (all w/ scratches & tarnish to metal & some wear to leather) all good-fair.

## Holiday Vintage, Couture & Textile Auction



### 212: TWO BONNIE CASHIN FOR COACH HANDBAGS, AMERICA, 1960s

USD 300 - 500

1 cream paper bag style handbag w/ 2 sides forming deep coin purses, heavy gilt chain handles, multicolored striped cotton interior, brass feet 7" x 4" x 9", (hardware w/ light wear/scratches, tiny-0.25" light spot stains throughout); 1 black doctor's bag style purse w/ attached coin purse & double hinged loop handle, unlined, single interior pocket of multicolored striped cotton, brass feet, 9" x 5" x 12", (light wear & fraying to stitches, tarnish to metal in handles, scratches to leather on sides from handle) both good.



### 213: AUTHENTICATED CHANEL JUMBO QUILTED BAG, PARIS, c. 2001

USD 1,200 - 2,000

Unused jumbo handbag w/ classic single flap, black calfskin quilted leather, interwoven SH strap in gold tone chain & leather can be worn doubled up or as single strap, gold tone Chanel logo "CC" twist lock closure, single back exterior curved patch pocket, 1 interior patch & 1 zip pocket w/ "CC" logo pull, comes w/ Chanel protective slip cover, interior hologram authentication sticker w/ serial #6136656, 2000-2002, label "Chanel, Paris, Made in France", 12" x 8.5" x 3", very good-excellent.



### 214: CHANEL BAROQUE PEARL NECKLACE & DIOR SUNGLASSES, 1980s

USD 400 - 800

Double strand baroque pearl necklace w/ gilt double floral baroque pearl drop, set w/ aquamarine paste cabochan, adjustable gilt hook clasp, strong w/ knotted silk cord, 1980-1990s, stamped "Chanel, Made in France", shorter strand L 19", longer strand L 24.5", pendant 1.25" x 3.75" x 0.75", (loop for drop opening, light scuffing to pearls) good; 1 pair pale blue & cream composite sunglasses w/ oval lavender lenses & partially open bridge, gold tone embossed leather slip case, label "Christian Dior" & "Made in Austria", frames 6.25" x 2.5", arms 0.5-0.75" x 6", (discoloration to frames, light scratches throughout, few tiny stains & marks in leather case) fair.



### 215: SIMONETTA FABIANI ATTRIBUTED GOLD EVENING DRESS, ITALY

USD 300 - 500

Strapless princess cut tulip gown in heavy golden silk satin, fitted bodice w/ symmetrically draped & folded foliate petals embracing B, balloon skirt shaped w/ deep gathers at CF & CB hem, CB zip closure, boned bodice, mid 1950s, B 34.5", W 24.5", L 39", (shattering to neckline, lining stained, wear to lining, large faint stain at seat, applied sections at bodice starting to pull & w/ wear at edges, 0.25" stain to CF) fair.



### 216: TWO BONNIE CASHIN WOOL COATS, AMERICA, 1951-1964

USD 300 - 500

1 black & white multi-scale houndstooth plaid cape w/ convertible shawl collar, 2 CF equestrian halter snap closures, collar, CF opening, SS arm slits & hem all bound in black leather, 1951-1955, L 41", SH-SH 20", (buckles worn) very good; 1 basket weave mohair coat in green & blue w/ shawl collar, dolman 3/4 length sleeves, bound at all edges & CF of tan ultra suede, lined in green wool jersey, 1960-1964, label "Sills & Co., A Bonnie Cashin Design", B 46", L 38.5", very good.



### 217: ZECCA MERMAID WEDDING GOWN, ROME, 1950s

USD 400 - 600

Strapless guipure lace mermaid shaped wedding gown w/ CB self-covered buttons, lace pattern historically inspired by late 17th C, label "Zecca, Roma", B 36", W 25.5", L 57", (pulls to lace CB near buttons, stains to lining, 3rd button from top loose, dirty hem) very good.



### 218: PEDRO RODRIGUEZ COUTURE BEADED COCKTAIL DRESS, SPAIN

USD 400 - 600

Ivory silk faille dress w/ square neckline based on 16th C high fashion portraits, sleeveless, fitted bodice w/ princess seaming to flared skirt pleated over Hs, encrusted in horizontal beaded bands of crystal seed & bugle beads, turquoise, faux pearls & prong set paste round brilliants in designs based on Hispano Moresque architectural relief patterns found in palace ceilings, label "Pedro Rodriguez, Madrid, Barcelona, S. Sebastian", 1960s, B 34", W 24", L 37", (tiny dark stain left seat, bead loss) very good.

## Holiday Vintage, Couture & Textile Auction



### 219: TWO BONNIE CASHIN ENSEMBLES, AMERICA, 1965-1972

USD 300 - 500

Both w/ brass oval twist turn lock closures & label "Sills, A Bonnie Cashin Design": 1 ensemble in tri-color checkerboard plaid in shades brown & caramel, fitted jacket w/ round neckline, long sleeves, front tabbed waist w/ black leather binding, 4 panel A-line calf length skirt, 1967-1972, B 37", L 18.5", skirt W 28", L 30.5", (fabric worn, esp. in skirt) very good; 1 skirt suit in mottled brown, black & cream wool, jacket w/ flat tab collar, slit H pockets, bracelet length sleeves, wrap skirt w/ CF closure, 1965-1970, B 40", L 23", skirt W 29", L 22.5", (fabric lightly worn, buckles worn) very good.



### 220: EMILIO SCHUBERTH ATTRIBUTED COUTURE GOWN, ROME, 1955

USD 800 - 1,200

Silk satin single SH princess cut evening dress in cream over triple tiered, flared skirt in modified crinoline style in shades of taupe & brown, oversized gathered poof to right B w/ gathered & draped asymmetrical shawl backed in cocoa brown silk satin, boned bodice, CB zip closure, 2 custom made petticoats included, exhibited, unlabeled & attributed to Emilio Schuberth, B 31.5", W 24", L 45.5", (stains to bow, stains, light scuff & wear to satin, petticoat too long) good. Exhibited at 'Fondazione Mondragone Napoli, Museo del Tessile e dell-Abbigliamento', July-October, 2004. Also featured in "Lo Spettacolo della Moda", by Bonizza Giordani Aragno, page 54.



### 221: TWO DIOR DAY DRESSES, PARIS & NEW YORK, 1950-1960

USD 300 - 500

1 black silk satin resist print w/ miniature blush polka dot, shawl collar, short cap sleeve, bandeau front to interior snap closure, slender self-belt to high W w/ left side hook & eye closure, CF zip closure, A-line skirt, c. 1956, label "Boutique Christian Dior, Paris, #1411800", B 34", W 27", L 40", (1 snap gone, 0.75 scuff to lapel) very good; 1 draped shirtwaist in mauve patterned silk w/ floral motif on fine geometric ground w/ metallic weft insertions, reverse collar to front peplum & self-covered belt, dolman sleeve, abalone CF button closure, calf length pleated flared skirt w/ deep pleat at back Hs for train effect, label "Christian Dior-New York Original", B 42.5", W 28", L 45", (light fraying to belt buckle, discoloration) good.



### 222: THREE SKIRT SUITS, FRANCE & AMERICA, 1950-1960s

USD 300 - 500

1 black wool wavy rib jacket w/ round neckline & roll collar, princess seamed, fold back cuffs, CF tri braid button closure, matching skirt w/ 2 inset front pockets, left SS zipper closure, 1968, label "Townley", B 37", W 25" L 21-37", (missing W closure); 1 heather grey looped wool & mohair blend w/ length sleeve, straight-line skirt, CF button closure & leather string belt, 1950s, France, B 40", W 26", L 22-41", (1 button scratched); 1 black wool herringbone rib weave fitted long sleeve jacket w/notched inset black velvet collar & attached cuff, satin lining, double breasted w/ 2 button closure, matching straight-line skirt w/ CB kick pleat & SS zip closure, c. 1951, label "Bonwit Teller", B 38", W 26", Total Length 42", Jacket L 23", (no buttons on jacket) all very good-excellent. Museum at FIT.



### 223: IRENE DAY ENSEMBLE, AMERICA, 1950-1955

USD 300 - 500

2-pc. ensemble w/ coat of complex twill weave in brown, green & yellow, black glaze kid notched collar, CF button closure, inset fitchet pockets, matching dress of black wool crepe w/ long sleeve, princess line day dress w/ 2 matching decorative buttons to W, flared skirt, CB zip closure, c. 1950-1955, label "Irene, Exclusively for Bullocks-Wilshire", dress B 38", W 28", L 43", coat B 38.5", W 33", L 42", (tiny snuck back right skirt) both very good.



### 224: MISSONI LAMÉ FLORAL PARTY DRESS, ITALY, 1970s

USD 300 - 500

Ribbed knit Egyptian inspired faux pleated party dress w/ Chinoiserie inspired horizontal floral bands on steel blue ground, short dolman sleeve w/ fold over epaulet tab at top SH, plunging V-neck, gathered W for blouson bodice, narrow self sash belt, label "Missoni, Made in Italy", B 56", W 24"-40", L 61.5", (small hole right front SH) very good.

## Holiday Vintage, Couture & Textile Auction



**225: RED & WHITE KNIT SUMMER MAXI DRESS, 1973**

USD 300 - 500

2-pc red & white striped cotton knit, sleeveless semi-fitted top, decorative white bead & rhinestone CF buttons, CB zip closure, mitered tulip skirt, B 34", W 26", Skirt L 42", (few pulls) very good. Museum at FIT.



**226: INAUGURATION WORN BALL GOWN, AMERICA, 1953**

USD 300 - 500

1 midnight navy silk satin ball gown, fitted bodice w/ broad gathered SH bands to full draped floor length skirt constructed w/ large piped diamond panels gathered to corded bows, label "Nanty, Paris, New York" & "Bergdorf Goodman, New York", B 31.5", W 27", L 60", (6" & 4" seam openings CB W& CF W, skirt bones poking out inside) very good. Provenance: Mrs. Catharine Miller, wife of Stanley Miller, Eisenhower's campaign staff; 1 blush pink silk taffeta sleeveless gown w/ scoop neck, draped bodice, tulip skirt drawn into sporadic gathers, B 35", W 28.5", L 54", (loose snaps, light stains right B, group of light stains at H, missing bow left SH, underarm stains, 2.5" water stain right front hem, seams beginning to open either side of zip) fair.



**227: TWO GEOFFREY BEENE EVENING GOWNS, NEW YORK, 1970-1980s**

USD 300 - 500

Both label "Geoffrey Beene Boutique": 1 double layer chiffon brown over orange w/ nude silk crepe under sheath, draped long dolman sleeve, high scooped neckline to plunging square back, obi style sash belt to tie at left CF, B 35", W 28", L 58", (2 strings stuck b/t chiffon layers left cuff, several spot stains to back hem); 1 orange peau de soie w/ metallic spot brocaded crepe empire W gown w/ deep scoop neck, full bishop sleeve w/ self-covered buttons to cuff, & left side pocket, ankle length skirt gathered to inverted deep pleat at CF for maternity wear w/ white bow W band, CB zip closure, B 35", W 27.5", L 56", (fraying at a zip) both very good.



**228: EMILIO PUCCI HAREM PANT, ITALY, 1960s**

USD 300 - 500

Pink silk satin Middle Eastern style sleeveless harem pant w/ diagonally printed strings of hexagonal medallions containing various geometric motifs, scoop neck w/ shaped band in stylized Grecian motif extending to CF for hidden silk covered snap closure, left bodice panel printed w/ rows of geometric & stylized platforms, elasticized ankle bands at skirt base, signed "Emilio" in print, B 37", W 31.5", L 56", (very light 1" lap stain, shattering at cuffs, 0.5" stain back left H) good.



**229: TWO LORENA SARBU INTRICATELY EMBROIDERED DRESSES, NY**

USD 400 - 600

Both modern & labeled "Lorena Sarbu": 1 long sleeve fitted sheath of nude net encrusted in bugle, seed beads & prong set paste round brilliant & marquise in baroque motif beading w/ strapless nude silk crepe underdress, B 34", W 24", L 43.5", (bead loss, 1" tear to net front left SH); 1 single SH white silk knee length sheath w/ inserted illusion panels w/ heavily beaded & embroidered baroque openwork scrolls over nude net at neck, to W expanding at right H into right side skirt to hem, B 35", W 27", L 43.5", (tiny dark spot stain to B & lap, tiny pull left H & seat, 0.5" tan stain CB) both good.



**230: EMILIO SCHUBERTH COUTURE EVENING GOWN, ROME, 1953**

USD 4,000 - 6,000

Cream silk satin strapless evening gown w/ broad turn down cuff neckline to dual asymmetrical cascades at CB, fitted princess line bodice to full flared skirt w/ slight train, sweeping embroidery across bodice to left side & at right back W in 3D wrapped silver vines bound w/ gold tone bullion & layered 3D roses & foliate in shades of pink, ivory & green w/ sequins & paste round brilliants, label "Emilio Schuberth, Roma", B 35", W 22.5", L 52", (label moved, shattering at neck, holes & stains to petticoat, lining shattered at zip, bones poking out) good. Exhibited at 'Fondazione Mondragone Napoli, Museo del Tessile e dell'Abbigliamento', July-October, 2004. Also featured in "Lo Spettacolo della Moda", page 52 & "Moda Italiana, 1950-1970", page 30.