

# Augusta Auctions



ROMANCE SALE - VINTAGE FOR YOUR VALENTINE

---

Wednesday - February 10, 2021

## ROMANCE SALE - VINTAGE FOR YOUR VALENTINE



### 1: PLAID SILK SATIN AFTERNOON GOWN, c. 1854

USD 500 - 800

2-pc afternoon gown of 2-tone green silk taffeta & satin in horizontal stripes of various widths w/ vertical stripes in 2-tone black for plaid effect, double box pleated rows of green-blue paper silk satin ribbon trim to bodice front, peplum & pagoda sleeve, attached lace extended collar & ruched net under sleeves w/ black velvet ribbon in whip stitch, broad double flat bow w/ tails accenting back of elbow & singular at CF, c. 1854, B 36", W 26.5", L 18.5"-20.5", skirt W 28", L 42.5", (underarm stains, holes in lace cuffs & collar, staining CF bow, 2 tiny holes below right SH, 2 light stains to back SHs & light stains throughout skirt) very good. Museum of the City of New York.



### 2: SILK PLAID TAFFETA DAY DRESS, c. 1850

USD 400 - 600

Brown, ivory & navy shadow tattersall silk taffeta dress, draped bodice ruched into CF W, piped SH seam w/ ruched drop SH to balloon sleeve & piped W line, collar, cuff & inner sleeve seam, CF hook & eye closure & double hook & eye closure at cuffs, modified box pleated attached skirt, brown glazed cotton lining, wool braid hem saver, B 32.25", W 25", L 57", (seam/pleating at W coming unpicked for 2.5" left CF, hooks at wrists oxidizing, tiny light staining below right H) very good. Museum of the City of New York.



### 3: BUBBLEGUM PINK EVENING GOWN, c. 1855

USD 400 - 800

Entirely handmade 2-pc bubblegum pink silk taffeta evening gown w/ multi tiered crenelated border pattern separated w/ horizontal stripes in silk black velvet to bodice w/ extended peplum, pardessus sleeves & tri-tiered ruffled skirt, B 38", W 25.5", L 19"-28.5", skirt W 27", L 43.5"-47.5", (missing dickie, small group of holes right front bodice W, 0.5" light spot stain right lapel, worn at folds around neckline, 0.75" spot stain lap, no CB closures on skirt, 1" seam opening & undone pleating right CB skirt, skirt taken in both sides of W, light staining lower skirt) good. Museum of the City of New York.



### 4: BROWN SILK MOIRÉ DAY DRESS, c. 1865

USD 500 - 800

Brown silk moiré day dress w/ unadorned, fitted bodice, full military style sleeves, CF needle lace covered ball button closure, piped armhole, SH seams & bodice darts topstitched w/ matching bias cut belt, skirt box & knife pleat CF to cartridge pleated back, bodice flat lined w/ unbleached linen, skirt lined in glazed cotton w/ wool braid hem saver, B 45.5", W 34", L 57"-68", belt Wd 2", circumference 33", (missing 1 CF button, underarm discoloration & worn right underarm, pin holes right SH, 2.5" of lining not bound by hem saver left of CB, belt edges worn) good-very good. Museum of the City of New York.



### 5: PURPLE SILK TAFFETA VISITING GOWN, 1868-1870

USD 500 - 800

3-pc purple silk taffeta visiting gown w/ aubergine silk velvet ribbon trims, extended bodice w/ bib front w/ bound scallop edging, CF velvet button closure w/ needle lace 6 point stars, CB bow & draped tails, short overskirt w/ apron front & cascading tails, four tiered & trained skirt trimmed w/ bias silk velvet binding to scalloped edges & self faux bias band detail to top edges, B 37", W 23", L 15"-33", skirt W 25.5", L 44.5"-55.5", overskirt W 25.5", L 13"-31", (2 tiny spot stains to velvet on B, stains right underarm, no CB closure on skirt, 1" tear right of CB below skirt W band, CB seam opening skirt, mild discoloration/fading throughout, 3" seam opening right H overskirt & 5" seam opening left H overskirt) good. Museum of the City of New York.



### 6: GOLDEN SILK MOIRÉ GOWN, c. 1867-1868

USD 800 - 1,200

4-pc golden silk moiré gown c/o fitted, back lacing bodice w/ fringed & tasseled epaulette & cuff w/ applied double bias bands, trained skirt, attached overskirt w/ apron front & cross over cascading panels to CB w/ ribbon rosette & trimmed w/ double bias band & tassled fringe, self belt w/ CF rosette, original lacings, c. 1867-68, B 41", W 25.75", L 14.5"-21", skirt W 26.5", L 44"-62", belt Wd 1.75", circ. 31.5", (left bodice SS taken in & let back out & right SS taken in, bone poking out CF point in 0.5" hole, CB hook & eye closure on skirt altered w/ stitches visible, small cluster stains to lap, two 0.5" stains right bottom side skirt, no belt closures & tiny holes to 1 end) good-very good. Museum of the City of NY.

## ROMANCE SALE - VINTAGE FOR YOUR VALENTINE



**7: RIBBON PATTERNED SILK DAY DRESS, c. 1868**

USD 400 - 600

4-pc gown of pale gold silk taffeta w/ warp patterned geometric & barred ribbon motif in silver & brown c/o casque bodice w/ pattern manipulated to enhance fitted bodice, cream silk passementerie in yoke outline, to cuff & edge of bodice & overskirt, decorative silk cover CF buttons w/ pyramidal jet centers, bell shaped skirt w/ applied black lace band, draped overskirt & fringed SH stole, B 35", W 26", L 14"-20", skirt W 26", L 41.5"-49.5", overskirt W 26.5", L 25"-42.5", sash Wd 6.5", L 45", (discoloration & two 0.5" spot stains CF B, staining CB & underarms, 3.5" stain CF skirt, fraying at hem, tiny pulls esp. to floats on skirt & overskirt, light spot stains to sash) good. Museum of the City of New York.



**8: PLAID SILK TAFFETA DAY DRESS, c. 1858**

USD 400 - 600

1-pc blue & brown complex ribbon plaid silk taffeta day dress, fitted bodice w/ CF closure, double box pleated sleeve into armhole & accented w/ blue passementerie drops & applied contrasting pleated ribbon ruffle band to pagoda sleeve, box pleated full skirt, piped collar, W & armhole, linen hem facing, B 41", W 34", L 57.5", (wear & staining at underarms, 1 missing tassel on right sleeve, minor shattering & wear CF B & around neckline) good. Museum of the City of New York.



**9: YOUNG LADIES PLAID SILK TAFFETA DAY DRESS, c. 1860**

USD 300 - 500

Silk taffeta day dress in green & gold plaid w/ black & white ikat stripe, velvet lozenge ribbon topped silk fringe yoke band & cuff w/ sleeves extension, CF green velvet covered button closure w/ hexagonal pyramid jet centers, green wool braid hem saver, full box pleated skirt w/ cartridge pleated CB, incorporated W band, B 31", W 23", L 51.5", (small holes & shattering throughout esp. at hem & back neckline, light stains to B, 14.75" seam opening right SS skirt) fair. Museum of the City of New York.



**10: THREE YOUNG LADY'S SUMMER DRESSES, c. 1905**

USD 300 - 500

1 elaborately tucked handkerchief linen w/ lace insertions, B 41.5", W 22.5", L 45", (buttons worn, washed) very good; 1 cotton mull w/ vertical & horizontal tucks to bodice & sleeves, graduated horizontal tucks to skirt, slip included, organdy sash w/ bow & elaborate tails w/ band insertion & double fagoting, sash not original, B 37", W 26", L 53.5", (1" tear at bottom of CB opening, cluster of small spot stains from B to H, original closures replaced w/ snaps) good; 1 cotton tulle w/ vertically tucked yoke w/ ribbon & lace appliqué & insertions, applied geometric silk satin ribbon rows to skirt, B 33.5", W 25.75", (light discoloration at collar & 1" faint stain to left left seat) good.



**11: TWO TEA GOWNS, 1905-1910**

USD 300 - 500

3-pc cotton lawn gown w/ chainstitch embroidered leaves, gathered blouson bodice, vertically tucked sleeves & tucked engageante cuffs, slightly trained skirt w/ single narrow flounce, flounced stole, B 50", W 22.5", L 17", skirt W, L 42.5"-49", wrap Wd 6"-7", L 93.5", (missing CF closure, 33" repair skirt above hem w/several small holes & tears, group of small-1.5" stains CF hem, 3 tiny-0.25" spot stains lap, tiny-small holes throughout, 0.75" stain to ruffle end) bodice & stole good, skirt fair; ; 2-pc cotton w/ woven patterned dot motif, deep gathers to CF & CB bodice into ruffled & quilted neckline, boned bodice, skirt w/ double flounce, B 33", W 27", L 16.5", skirt W 26", L 42", (discoloration across SHs, upper torso & skirt W band) good.



**12: TWO TEA GOWNS, c. 1910**

USD 400 - 600

1 Princess lace applique on silk net w/ twill satin underdress w/ slight fish tail train, c. 1912, B 35", W 27.5", L 58"-63", (2" light stain to B, missing closures) good-very good; 1 chainstitch embroidered cotton net w/ cream silk satin under dress, chemical lace appliqué insertions, CF ribbon escalier, sleeve & bodice yoke, bell shaped & trained skirt, 35.5", W 25", L 59"-68", (altered w/ some visible stitching, few small stains at back W, 0.25" hole CB above W) good.

## ROMANCE SALE - VINTAGE FOR YOUR VALENTINE



### 13: TEA GOWN, 1910-1912

USD 400 - 600

Cotton net encrusted w/ chemical lace appliqué, high neck, cuff & upper skirt w/ horizontal tucking, long sleeve, slight train, woven petersham label "L.C. & A.E. Stier, 2337 N. 22nd St. Philadelphia", B 38", W 25", L 55.5"-65.5", (bodice lining shredded, skirt lining missing, discoloration, underarm stains, missing CB hooks & eyes) fair.



### 14: THREE EMBROIDERED NET & LACE TEA GOWNS, MID 1920s

USD 400 - 600

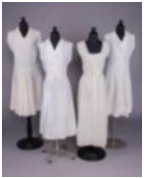
1 hand embroidered cotton net w/ hand embroidered filet lace insertions large flowers, front & back floating skirt panels w/ open sides & attached net underdress, B 37", W 35", L 49", (slip N/I, embroidery markings, few tiny holes to net) very good; 1 robe de style hand embroidered cotton lawn in Chinese floral & bird motifs w/ filet lace insertions & satin sash, slip included, B 40", W 38", L 40.5, excellent; 1 cotton tulle w/ chemical lace imitation of gros point de Venice, w/ inserted panels of Schiffli embroidery in exotic floral motifs, c. 1926, B 42", W 40", L 44", (slip N/I, staining to CF) good.



### 15: MAN'S FIVE PIECE TENNIS OR REFEREE ENSEMBLE, 1895-1905

USD 400 - 800

1 blue pin striped jacket w/ cotton jersey collar & cuffs, elastic W band, lined in cotton flannel, CH 46", L 24", (flannel lining discolored w/ three 0.25"-1.5" black stains, cuffs & collar discolored, 0.5" stain right CF); 2 striped shirts w/ handmade button holes, 1 blue, CH 48", L 29.5"-31", (few tiny spot stains); 1 black, CH 42", L 27"-29", (missing 2 buttons at CH & 1 right cuff, 4.5" tear left SS); 1 stovepipe cotton trouser in novel sport fleck w/ watch, side & back pockets, interior paired suspender buttons inside W band, W 28", L 41", inseam 30", (spot stains, stains at seat, belt loops fraying, buckle missing); 1 pair wool socks, L 10", Ht 15", (spot stains & discoloration) all good-fair.



### 16: FOUR SPORTING OR TENNIS DRESSES, c. 1930

USD 300 - 500

2 sleeveless cotton, label "Lillywhites LTD, Piccadilly Circus": 1 w/ notched collar, vertically tucked inserts from SH to below W, tucked W shaping at back, lacquered wood buttons, double kick pleats at knees & single at CB, belt w/ MOP buckle, B 38", W 34", 44.25 (buttons cracking, belt discolored, spot stain to B) & w/ CF panel into notched collar, deep knife pleats from let out tucks at W, B 40", W 32", L 43", (spot stains throughout); 1 belted linen w/ wood buttons, SH into cross over CB, B/W 44/5", L 49", (belt detaching, light spot stains/ discoloration, underarm seam opening); sleeveless tub silk w/ turnback draped collar & flared skirt, B 41", W 34", L 41.5", (no SS closure, 0.75" seam opening CB) fair-good. From the collection of Jeanne Cherry



### 17: TENNIS OR SPORTING SEPARATES, 1905-1940s

USD 300 - 500

1 cotton shirtwaist w/ cloth covered buttons, c. 1910, B 46", W 38", L 20", (stains, discoloration & 0.25" hole CB collar); 1 cotton skirt H pockets w/ reverses & MOP buttons, 1914, W 28", L 38.75", (loose closures, discoloration); 1 linen skirt, W 28", L 36", (holes knees, tiny holes & seat worn, left H dirty, missing 1 CB closure); 1 blouse w/ tennis print, 1940s, B 34", L 17", (light stains); 1 bodice w/ military inspired braid & soutache trims & buttons, military cuffed bishop sleeve, 1905, B 38.5", W 28.5", L 19.5", (spot stains CF); 1 cotton twill short sleeve w/embroidered tennis rackets, B 43.5" L 24", (0.5" spot stain collar); 1 handkerchief linen skirt w/ embroidery, W 29.5", L 38.5", (holes). Fair-good. From the Collection of Jeanne Cherry.



### 18: GUSSIE MORAN AUTOGRAPHED UNDERWEAR & ASSORTED

USD 300 - 600

1 entirely handmade handkerchief linen corset cover w/ lace insertions & silk ribbon insert at neckline, "LGD" monogram, 1910s, B 38", W 25.25", L 22", (button loop torn, light spot stains & discoloration, ribbon stained & worn); 1 cotton corset, c. 1914, label "Wove-Bone Trademark", B 28.5", W 22.25", L 16"-19", (lining shattering, metal oxidizing, elastic worn, laces N/I) excellent; 1 silk bloomers, 1920s, W 23"-50", inseam 8", (scattered tiny moth holes); 3 pair autographed ruffled bloomers, signed "Gussie Moran" & w/ label "Sport Panties, Made in USA": 1960s, 1, W 24"-36", L 14"; 1, W 22"-34", L 13"; 1, W 22"-34", L 13", (few tiny pulls). All good-very good. From the collection of Jeanne Cherry.

## ROMANCE SALE - VINTAGE FOR YOUR VALENTINE



### 19: TENNIS ACCESSORIES & MISCELLANY, 1890-1950s

USD 300 - 500

Cashmere faux W coat insert w/ tennis & hockey themed lining, W 32.5", L 23", (sm. SHs holes, 2.5" hole left armseye); 1 belt w/ metal snake hook, 1890s, Wd 2", circ. 33", (spot stains, tarnish); 1 tennis motif Heilmann embroidered textile, 1900, Wd 4.75", L 2+yds, (yellowing, spot stains); 1 cream crochet lace, Wd 3", L 30", (raw ends); child's 3-pc ensemble c/o shirt, shorts & blazer, 1930, CH 32", W 23", L 24", (tiny spot stains); 1 unopened Wimbledon handkerchief, 6.25"x6.25"; 1 spring wire brass W cincher, patent "The Martin", Wd 1.25-2", circ. 25", (tarnish); 1 pair silk stockings, L 9", Ht 27", (spot stains & holes); 1 printed silk scarf, 26"x26", (raw edges), t/w 1 tennis net. All fair-excellent. From the Collection of Jeanne Cherry.



### 20: DOLLY VARDEN DOLL DRESS, 1880s

USD 400 - 800

2-pc doll's dress in complex changeante silk copper to deep teal c/o fitted bodice w/ 2-pc shaped sleeve, inset & vertically gathered plastron front, brown silk velvet to collar, cuff & in V-shaped W front, double band looped bustle back, bustle skirt w/ knife pleated front panel & pleated side swags drops to bustled back, 1880s, B 22", W 15.5", L 14.5", skirt W 13.5", L 17.75", (wear throughout bodice, velvet worn at cuffs, wear at skirt edges) good; 1 cotton cami knickers, B 17.5", W 14", L 22", (scattered spot stains) very good.



### 21: TWO IRENE ENSEMBLES & ONE COAT, AMERICA, 1950s

USD 400 - 600

1 navy raw silk set c/o overcoat w/ notched collar, oversized CF buttons, tabbed faux H pockets & calf length skirt lined in black silk crepe, c. 1955, label "Irene, Exclusively for Bullocks Wilshire", B 40", W 36.5", L 39", skirt W 27", L 28", (W w/ imprints from hanger); 1 black silk faille tiered ruffle dress & flared crop jacket creating 3rd tier, 1952-1955, label "Irene! Exclusively for Neiman-Marcus", jacket B 37", L 18.5", dress B 40.5", W 28", L 39"; 1 navy silk surah coat w/ notched collar, 3/4 length sleeves, CF closure, bias cut geometric band from B falling to W & to CB w/ 2 decorative buttons, lined in navy silk, c. 1955, label "Irene, Exclusively for The Halle Bros. Co", B 45", L 44", (label detached, discoloration back) all good-excellent.



### 22: TWO BLACK COCKTAIL DRESSES, 1947-1950s

USD 300 - 500

1 faille w/ V-neckline front & back, short sleeve, fitted bodice w/ self gathered W wrap continuing into fringed left H drape, knee length straight skirt w/ right side wrapped panel, diagonal self-button closure from CB V to left SS zipper, bound button holes, 1947, label "I. Magnin & Co.", B 37", W 25", L 42", (repaired seam openings at left H, 2 missing buttons) very good; 1 silk off-the-SH fitted sheath, large fold down drape collar pleated at CF & bisected by buttoned triangular panel folded up from under B, fitted W, straight knee length skirt, left SS zip closure, B 38", W 29", L 36", (seam opening CB W & at right SS near hem, light white spot stains, tack undone at B) fair-good.



### 23: TWO IRENE SKIRT SUITS, AMERICA, 1950s

USD 300 - 600

Both label "Irene! Exclusively for Bullocks Wilshire": 1 skirt suit in grey & ombré grey stripe w/ inlaid baldric mitered bias band terminating in double tab at left H, slender shawl collar w/ taupe CF button closure, right front H tabbed pocket, 1950-1953, B 37", L 25", skirt W 26", L 27", (1 tiny moth hole back right SH); 1 heathered charcoal wool skirt suit lined in persimmon silk crepe w/ notched shawl collar & slender scarlet underlaid yoke detail, c. 1956, B 40", L 23", skirt W 30", L 27", (0.5" white stain left cuff) both very good.



### 24: THREE SKIRT SUITS, AMERICA, 1960s

USD 300 - 500

1 in red & black modified waffle weave, over the H pockets w/ diagonal 3 button tab, mid 1960s, label "Saks Fifth Avenue by Ben Gershel", jacket B 39.5", W 30", L 24", skirt W 24", L 25", (label detaching) very good; 1 brown wool fleece flared jacket w/ drop SH & molded faux cord wrapped buttons, straight skirt, early 1960s, label "Robert Knox, New York", jacket B 50", L 22.5", skirt W 25", L 23.5", (tiny snack CF B & hem, 0.25" snack top left SH, fabric worn) fair- good; 1 faux herringbone quilted black c/o fitted jacket w/ dolman sleeves, notched collar, 3/4 length sleeves, CF domed button closure, B 35", W 29", L 20.5", skirt W 24", L 25.5", (light pulling especially to W band & lapel) very good.



## ROMANCE SALE - VINTAGE FOR YOUR VALENTINE



### 25: BEENE & BERNARD SKIRT SUITS, AMERICA, 1960s

USD 300 - 500

2-pc novelty weave wool boucle suit in shades pink, tan, brown, black & white, c. 1960, label "Harvé Benard", jacket B 37", L 22", skirt W 28", L 27", (label detaching); 2-pc black silk crepe shell & skirt, 1962-1966, label "Geoffrey Beene", jacket B 39", L 24.5", skirt W 25", L 24", both very good.



### 26: TWO IRENE WOOL SKIRT SUITS, AMERICA, 1948-1953

USD 400 - 600

1 cream & charcoal stripe wool skirt suit w/ inset mitered yoke, upper collar & H band in goldenrod wool twill, 2 mitered H tabs, lined in ivory silk crepe, unlabeled & attributed, 1948-1952, B 39", L 25", skirt W 27.5", L 26.5", (moth hole left SH blade, lining w/ discoloration, 0.5" repair & 0.25" & tiny hole inside CB collar, 1.5" light stain right lapel, few tiny holes in W band) good; 1 wool crimson & navy striped w/ complex diagonal & horizontal chevrons jacket w/ elaborately mitered piecing & matching skirt w/ lined vent, 1950-1953, label "Irene, Exclusively for Harzfeld's", B 37", L 25.5", skirt W 25", L 27", (2 tiny holes CB jacket & 2 left sleeve) very good.



### 27: TWO DRESS SUITS, AMERICA, 1960s

USD 200 - 400

Both sleeveless & w/ matching jackets: 1 lime green w/ pencil skirt & cropped jacket of lime green & pink novelty tweed & quilted peter pan collar & self-covered CF button closure, B 35", W 26", L 19"/35", (pulls especially at right sleeve & left SH blade) very good; 1 w/ houndstooth top & white pencil skirt, wide belt w/ white buckle & grommets, matching brown jacket w/ 2 H patch pockets, white CF button closure & contrasting stitching at pockets & collar, label "Saks Fifth Ave. The Young Circle", B 35", W 27", L 25"/34", (group of light stains near back hem of skirt, 1 belt loop broken, belt buckle & grommets dirty/paint worn off) dress good, jacket excellent, belt fair.



### 28: RUDI GERNREICH FOR WALTER BASS VEST, AMERICA, c. 1957

USD 300 - 600

Early & rare woman's orange cotton vest w/ fuchsia tie at CF & CB, contrasting back panel in B&W pin stripe, turn back lapels & lining in pink & white cotton gingham, spring 1957, style number 161, reference photo from California Apparel, Feb 8th 1957, label "Rudi Gernreich design for Walter Bass", B 38", L 13.5"-18.5", excellent.



### 29: VALENTINO FOR TWA FLIGHT ATTENDANT UNIFORMS, AMERICA

USD 300 - 500

C. 1971: 1 trench style overcoat w/ tabbed patch pockets, self tie belt & collar, B 39.5", W 31", L 39", (coat unlabeled, buttons worn & oxidizing, 1 button missing, stains from buttons to top 2 buttonholes, 2 black stains back SH blades, 1.5" line of stains on belt seam) good; 1 cocoa & cream "V" logo scarf, 30.25" x 30.5", (0.25" stain & pull to center of scarf) good-very good; 1 shaped tunic, round collar w/ decorative 2 "V" button tabbed yoke, short sleeve w/ 2 "V" buttons, faux slash pockets to H, B 39.5", W 32.5", L 28.5", matching slacks w/ elastic W, W 26"-34", L 39.5", inseam 29.5", (unlabeled, light spot stains & pulls throughout blouse, few spot stains lap & seat) good.



### 30: DALTON FOR TWA POPPY FLIGHT ATTENDANT UNIFORMS

USD 300 - 500

1968-1971: 3 matching striped short sleeve mini dresses w/ mock turtleneck & self belt: 1, B 37", W 30", L 34.5", (0.25" stain lap); 1, B 35", W 28", L 34.5", (0.25" stain lap, 0.5" stain left SS); 1, B 35", W 31", L 35", (pull in lap, all w/ worn underarms); 1 goldenrod yellow jacket w/ gold button closure & faux half belt, label "Created Exclusively for TWA by Dalton", B 38", L 23.5", (no buttons, spot stains throughout, 2 pulls front left SH); t/w yellow raincoat, label "Aqua Sheen by Exylin Co". All fair- good.

## ROMANCE SALE - VINTAGE FOR YOUR VALENTINE



### 31: DALTON FOR TWA POPPY FLIGHT ATTENDANT UNIFORMS, 1968-71

USD 300 - 500

1 tomato red raincoat w/ standing collar, ring pull zip closure, incorporated raglan SH cape, slit pockets to H, & matching banded head-covering w/ TWA cast button, & poppy collection striped scarf in yellow, green, tomato red & white, label "Created Exclusively for TWA by Dalton", B 42", L 35", (zipper tarnished, tiny stains & scuffs to fabric in lap & seat); 2 international landmark ink drawing & small geometric color accent printed cotton dresses w/ self tie, CF zip closure, 2 deep patch pockets, B 39" W 37" L 36", (1 w/ staining across front, paint chipping off zip, 1 w/ discoloration & staining throughout, 3.75" repair at seat, tiny tear left SH) all fair-good.



### 32: HAWAIIAN & THAI AIR FLIGHT ATTENDANT UNIFORMS, 1960s

USD 300 - 500

Hawaiian air ensemble c/o 1 plum faux double breasted princess line coat dress w/ crest buttons, single B pocket w/ pocket square, label "Murphy & Hartelius, Made in USA", B 40", W 32", L 40" & 1 matching white cotton dress w/ traditional Hawaiian patchwork quilt inspired print in floral, figure & plane motif, label "Murphy & Hartelius", B 36.5", W 30.5", L 37", (paint on zipper chipped) very good; Thai Air ensemble c/o white cotton print blouse w/ orchid motif & "Thai" logo gold tone buttons, purple skirt & black leather belt w/ gold tone "Thai" logo buckle, B 37.5", L 24.5", skirt W 25.5", L 21.5", (belt worn, two 0.25" stains right SS) good.



### 33: SET OF THREE TWA PAPER DRESSES, AMERICA, c. 1968

USD 300 - 500

All reinforced paper & unworn: 1 "Manhattan Penthouse Pajamas" for flight to NYC, 1-pc dark grey jumpsuit w/ silvered paper neckline to flat bow at CF & matching broad W tie in silvered paper, B 40", L 55.5", (material crumpled); 1 "French Cocktail" gold minidress for flights to Paris w/ standing ruff neckline, CF closure & slender self tie belt, B 38", L 35", (material crumpled) 1 "British Wench" dress for flights to London in grey w/ white ruff to neckline, surplice bodice opening & cuff, wide aquamarine belt, B 40", L 35.5", (ruff dirty, dress crumpled) all good-very good.



### 34: FOUR BONNIE CASHIN SWEATER DRESSES, SCOTLAND

USD 300 - 500

1960-1970's: 1 azure cashmere w/ green 2-tone insarsia leaves to left front SH, label "Designed by Bonnie Cashin", B 42", L 43", (hem stained); 1 plum & cinnamon striped lambswool w/ slender tie belt & convertible scarf/ turban, label "I. Magnin Bonnie Cashin Design", B 38", L 43.5", (label partially detached, hem falling); 1 blue & goldenrod cashmere knit striped sleeveless w/ turtleneck, label "Ballantyne designed by Bonnie Cashin", B 36"-48", L 37"; 1 pink & orange striped cashmere w/ slender pink tie belt, label "Ballantyne designed by Bonnie Cashin", B 40", L 40", (0.25" hole B) all good- very good.



### 35: THREE BONNIE CASHIN SWEATER DRESS ENSEMBLES, AMERICA

USD 300 - 500

1960-1970's: All label "A Bonnie Cashin Design Joseph Guttman & Bros. Inc.": 2-pc dove grey knit w/ gold lame novelty weave SH & W yokes, bateau neckline, faux wrap skirt w/ tie at H, B 35", W 28", L 21", skirt W 24", L 32", (0.5" hole W band & missing W loop); 2-pc moss green w/ contrasting cream collar, cuffs, W band & hem to extended ties at left SH & right H, faux wrap skirt, B 37", W 29", L 22", skirt W 23.5", L 32.5", (underarms stains & wear, hem falling, no W loops closure); 3-pc grey & cream stripe knit, c/o cardigan w/ pearlized ball button CF closure, tank top & calf length skirt w/ wide contrasting W band, B 42", L 15.5", top B 39", W 30", L 19", skirt W 23", L 30", (underarm stains, 0.25" holes front hem & seat) good- very good.



### 36: BONNIE CASHIN & GUY LAROCHE SWEATERS, FRANCE & AMERICA

USD 300 - 500

1960-1980's: 5 cashmere w/ label "Ballantyne, Designed by Bonnie Cashin" & "Made in Scotland: 1 heather grey & butterscotch striped turtleneck, B 38", L 22"; 1 color block in orange & pink w/ stylized daisies, B 39", L 24"; 1 faux turtleneck w/ celadon, pink & purple stripes, B 38", L 24.5", (0.25" & 1.5" light spot stains); 1 pastel color block w/ circular motif in shades of pink, purple & blue, B 40", L 24"; 1 blue cardigan & skirt set w/ intarsia blue & white florals, B 41", L 22.5", skirt W 17-32", L 22.5"; 1 ultramarine wool boucle, label "A Bonnie Cashin Design, Silks & Co.", B 33-48", W 23.5-32", L 19"; 1 blue loose knit & beaded, label "Guy La Roche, Paris", B 30", L 21"; 1 blue & purple cardigan, label "Bonnie Cashin", B 40", L 22.5, all very good-excellent.

## ROMANCE SALE - VINTAGE FOR YOUR VALENTINE



### 37: TWO TEA DRESSES, EARLY 1930s

USD 400 - 600

1 cotton dotted tulle w/ tape lace appliqués throughout & reseau insertions, asymmetrical hem w/ left side slit edged in tape lace applique, c. 1932, B 36", L 49", (2.5" & 2" holes near back hem, tiny holes throughout) good-very good; 1 tulle w/ draped bunting style collar, appliqué tape lace floral & foliate motifs, handmade lace eyelet button accents, skirt flounce set on diagonal accented w/ tape lace flowers & fronds, ruffled hem, B 34", L 46", (3" seam opening & tear at right H, detached appliqués) good.



### 38: TWO TULLE TAPE LACE TEA GOWNS, 1930s

USD 400 - 600

1 cotton tulle w/ tape lace appliqués, gathered to left H w/ asymmetrical swag to left front scalloped hem, back side slit gathered to back left H falling to asymmetrical hem line, B 42", W 46", L 46.5"-60", (tiny-0.5" dark stains, trim cut from back slit for 24", residue top of slit, altered) good; 2-pc cotton tulle w/ tape lace appliqués in flowers, buds, leaves & stem motifs, dress w/ draped collar forming over sleeve & into back yoke, vertical tucks for CF W shaping, matching SH cape w/ long extensions heavily appliquéd w/ tape lace flowers & insertions, late 1930s, B 40", W 38", L 57", cape L 13"-25", (lining mostly removed, group of holes right knee, few holes throughout, tiny light stains front of cape) good.



### 39: THREE TEA DRESSES, 1920-1930s

USD 400 - 600

1 w/ Schiffli embroidered whitework bands w/ faux Irish crochet chemical lace insertions, horizontal bands of ribbed tulle, square neckline & ruffled cap sleeves, CB button closure, mid 1930s, B 43", W 41", L 47, (slip N/I, CB neck fraying, few inconsistencies in net) very good; 1 cream scoop neck, sleeveless bodice w/ heavy corded fillet lace w/ horizontal bands in skirt separated w/ tulle in lovebird motif, & silk crepe de chine underdress included, early 1920s, B 34.5", W 29", L 48", (underdress damaged, loose/ missing closures) good; 1 cotton net w/ vertical woven faux tucking, yoke, bodice front & skirt insertions of handmade tape & needlelace in floral & leaf motifs, B 48", W 36", L 53", (3 tiny holes to midsection, slip N/I) very good.



### 40: THREE TEA DRESSES, 1912-1920s

USD 400 - 600

1 long sleeve cotton crepe tunic w/ vermicelli embroidery, wide yoke, CF panel, buttons, belt & hem of heavy boucle bark cloth, c. 1916, B 50", W 32", L 38.5", (2", 3" & 2.5" holes & wear W, faux belt detached across back, right front pocket detaching) fair; 1 cotton lawn w/ Philippine embroidered roses & fillet lace inserts to CF, broad W yoke, open sleeve cuffs & collar, needlework ball buttons to CF, armscye of embroidered fillet insertion, c. 1912, B 47", W 30.5", L 47.5", (0.5" hole left knee) very good; 1 long sleeve Philippine embroidered net tunic w/ fillet lace CB SH panel & asymmetrical wide hem w/ fillet godet insertions, c. 1920, B 40", W 41", L 37-40", (small-tiny holes both SHs, 0.25" hole left B) good.



### 41: TWO ELABORATE TEA GOWNS, 1913-1915

USD 400 - 600

1 silk tulle gown draped bodice gathered to W over SH & into back W w/ double draped SH panel over net sleeves, Heilmann & chemical lace to square neckline & CF, gathered triple tiered skirt w/ finely embroidered hydrangea motif alternating w/ chemical lace & Heilmann embroidered band, c. 1913, B 30", W 20.5", L 56", (fraying around neckline, 0.75" tear left underarm) good-very good; 1 white net gown w/ Schiffli embroidered chemical lace appliqués & panels edged w/ insertions in Byzantine inspire motifs, square neckline, tiered tucked sleeves w/ insertions, front hem w/ double pointed panels & back w/ single, weighted hem, c. 1915, B 40", W 28", L 41-51", very good.



### 42: ONE BEDGOWN & ONE BOUDOIR GOWN, EARLY 1870s

USD 300 - 500

1 cotton bedgown w/ vertical tucks, Heilmann insertions & edging, hidden CF MOP button opening, early 1870s, B 52.5", W 60", L 51"-54", (tiny spot stains lap & B interior hem dirt) very good; 1 princess line boudoir gown of cotton mull w/ vertical tucks & fine batiste Heilmann embroidered insets, double ruffle sleeves w/ inserts, tucked & inserted pockets at H, CB gather w/ ruffle extending into skirt panels, hem w/ rows of tucking, insertions & edging, c. 1874, B 33", W 31", L 51.5", (8.5" tear left front lap, tiny repaired holes B, W, SH blade & embroidered edges, 1.5" tear left SH) good.



## ROMANCE SALE - VINTAGE FOR YOUR VALENTINE



### 43: TWO TRAINED BOUDOIR ROBES, c. 1910

USD 300 - 500

1 silk crepe w/ geometric lace insertions to flounced collar, long ruched Renaissance Beatrix sleeves, CF panels & hem, B 50", W 64", L 58.5"-61", (missing CF closures, holes & small tears in lace hem, 0.5" hole left cuff) good; 1 cotton lawn w/ broderie anglaise & lace insertions, fine hand tucking to CF, sleeves & CB, engageantes cuffs, B 36", W 34", L 64.5", (ribbons at SH broken, lace hem fraying) very good.

---



### 44: THREE DRESSING GOWNS, 1860s-1900

USD 300 - 500

1 handkerchief linen w/ bands of lace insertions, embroidery & horizontal rows of hand tucking to front bodice & knife pleats to back bodice, flared sleeve, ecru silk ribbon at neckline, 1870s, B 43", L 58", (wear to pleats at SH blades) very good; 1 entirely handmade of fine Piña fiber w/ rows of drawn work to vertical tucks at SHs, CB & CF, whitework embroidery, embroidered eyelet for ribbon insert at neckline, c. 1900, B 39", L 59.5", (missing ribbon) excellent; 1 entirely handmade handkerchief linen w/ drawnwork & Swiss embroidered bows, Lily of the Valley & butterflies to front neckline & sleeves, ribbon insertion at neckline, 1860s, B 51", L 57", (tiny spot stains throughout) good.

---



### 45: DRESSING GOWN & DRESSING ROBE, c. 1903

USD 300 - 500

1 ivory dressing gown in ivory silk w/ warp shadow stripe, gathered collar & engageante cuff w/ scalloped edge in fine needle embroidery, faux cummerbund w/ horizontal tucks, CB w/ vertical tucks to W let out into skirt, center left button closure, B 40", W 30", L 49.5"-56", (0.25" stain at right H) very good; 1 white cotton dimity trained dressing robe w/ deep bertha collar w/ lace insertion & edging, bishop sleeve w/ lace edged cuff, open front w/ attached self-tie closure, c. 1903, L 56"-62", (internal W band detaching 1", light 0.25" x 0.5" spot stain back left SH) good-very good.

---



### 46: FOUR DECORATIVE WINTER PETTICOATS, 1870s

USD 300 - 500

1 wool & cashmere w/ Heilmann embroidered floral sprays & imitation cutwork over hem, circ. 76", L 31", (unpicked W band, spot stains throughout) good; 2 wool trousseau petticoats w/ silk Schiffli embroidery & Maltese lace trim to hem, glazed cotton W yoke: 1 w/ double interlacing Greek key & graduated sprig leaf motif, W 25.5", L 31.5", (0.5" stain CF W, very light discoloration/stains throughout) good, 1 w/ ogive leaf & sprig motif, W 26", L 29.5", (missing 1 button, few 0.25" & 0.5" stains mostly at H) good; 1 lambs wool w/ tiered hand tucking above hem & crocheted edge, W 25", L 30", very good.

---



### 47: THREE PETTICOATS, 1900-1910

USD 300 - 500

1 trained pink silk crepe w/ tucks from W band into 9 gore skirt, double applied bias bands above hem, c. 1910, W 24", L 40.5"-51.5", (train lightly soiled, cluster of light stains below right knee & front hem, hanger imprints) good; 1 handkerchief linen w/ triple lace ruffle at hem, tromp l'oeil lace insertion from CB & at ruffles, W 30", L 37"-40", (no W closures) very good; 1 silk blend w/ triple bias cut ruffle at hem & applied lace bands, W 14"-44", L 35"-39", (hanger imprints to W) good.

---



### 48: THREE PETTICOATS, 1900-1910

USD 300 - 500

1 cotton lawn w/ bobbin lace insertions, gathered ruching & flounce at hem, drawstring W, c. 1910, W up to 35.5", L 36"-38.5", (hanger imprints to W) very good; 1 heavyweight cotton w/ crocheted appliqué W band, applied ruffle at knee edged w/ rickrack needlelace attached border, drawstring W band, probably Central European folk costume, c. 1900, W 20"-36", L 39", (hanger imprints, pin spot stains W band) very good; 1 white cotton dimity w/ double hem flounce edged w/ crochet & tape lace, probably Central European folk costume, c. 1905, W up to 51", L 36.5", very good.

---

## ROMANCE SALE - VINTAGE FOR YOUR VALENTINE



### 49: THREE REGIONAL BLOUSES, 1890-1920

USD 300 - 500

1 folk inspired bodice w/ machine embroidered red & blue buds to collar & peplum, c. 1890, B 45", W 33", L 30", (tiny dark stain above W, pull to fabric right arm, 0.75" light stain B ruffle) good; 1 Mediterranean bodice pieced of narrow bands of drawnwork & embroidery, 1920s, B 42", L 18", (raw hem) good; 1 Central American white & red tourist trade blouse w/ crochet & regional embroidery, B 54", L 27", (large light area of staining right H, 16" x 7") good.

---



### 50: SEVEN LACE BODICES, 1900-1912

USD 400 - 600

1 point d'Ã'esprit net cream satin ribbon appliquÃ©s, B 44", W 27", L 16.5"; 1 blouson Irish crochet white w/ bauble trim, B 44", W 28", L 16.5", (fraying at hem, small stain to front bauble); 1 net w/ embroidered floral appliquÃ©s & bobbin lace openwork inserted front panels, B 46", L 20"-22", (CB cut & fraying, no closures); 1 w/ inset Ayrshire embroidered CF & crochet & lace insertions, B 38", W 26.5", L 15", (shattering CF & CB, discoloration at closure); 1 floral Schiffli embroidered on net, B 36", L 18 -22", (hem cut, no closure); 1 net bodice w/ Greek key & floral embroidery, B 50", L 16", (no closures); 1 w/ Irish crochet reticella & embroidered cotton tulle, B 42", W 25", L 18.5", (4.5"x1.5" section removed at CB, 0.75" stains CB) very good-fair.

---



### 51: SIX LACE BLOUSES, 1905-1912

USD 400 - 600

1 Val lace & cotton tulle V-neck, B 40", W 31.5", L 20.5", (1.25" hole in top layer of net right SH); 1 handkerchief linen embroidered yoke & lace insertions, B 42", W 26.25", L 18.5", (0.75" repair CF collar, 0.25" & 0.5" holes left collar/SH junction, 0.75" tear right SH); 1 Irish crochet & tucking, B 35.5", W 34.5", L 19.5", (3 tiny holes right SH blade, lines from unpicked stitches CB W line); 1 w/ woven dots & flounced sleeve, B 36", W 31.5", L 18.5", (no CB closures, two 0.25" holes, 0.5" repair at CF W); 1 embroidered net w/ ruffles at W & puff sleeves, B 29", W 20.5", L 18", (wear to W band); 1 monobosom w/ vertical stripes & overall tucking, B 44.5", W 25.5", L 17.5", (1 button missing) all good-very good.

---



### 52: SEVEN LACE BLOUSES & CORSET COVERS, 1910-1920s

USD 300 - 500

1 w/ lace embroidered cotton inset panels, B 36", L 13"-16.5"; 1 cotton w/ openwork trim insert & neckline, B 42", L 14.5", (missing button & hole CF W, replaced right underarm, 0.25" hole left strap, tiny holes left underarm); 1 cotton w/ drawnwork, B 45", L 22.5", (missing ribbon at neckline, cut hem lightly fraying); 1 reconstructed linen & crochet bra top, B 36", L 14.75", (missing bottom CB button); 1 w/ lace insertions & vertical tucking, B 40", L 18.5", (ribbon at W replaced w/ twill tape); 1 Heilmann embroidered cotton w/ eyelets, re-made from 1880s petticoat, B 33", L 17"; 1 w/ Italian needlelace fruit basket, Philippine embroidery & fillet lace, B 36", L 19.5", (tiny spot stain & 0.25" hole in trim left of CB) all good-very good.

---



### 53: SIX LACE CORSET COVERS, 1910-1920s

USD 300 - 500

1 pale pink w/ white embroidery & tucked ruffled sleeves & neckline, B 36", L 17.5", (hem unpicked & fraying, buttonhole missing, 1.25" tear left SH); 1 sleeveless pink silk w/ Irish crochet, B 37", L 16.5", (tiny spot stain CF W & 2 back left SH strap, tiny hole right SH blade); 1 china silk w/ lace inserts, B 42", L 16.5", (lace lightly fraying); 1 cream halter w/ lace inserts & ribbon straps, L 19", (ribbons fraying); 1 white monobosom w/ vertical hand pintucks & lace insertions, B 38", L 19", (spot stains CF B, neckline ribbon shattered); 1 cream silk w/ pintucks & diamond pattern, B 42", L 15", (missing rosette right B, neck ribbon fraying & broken, 0.25" spot stains right strap) all fair-very good.

---



### 54: EIGHT PIECES OF LINGERIE, 1860 & 1920s

USD 300 - 500

3 bed jackets: 1 white lace w/ pink silk under layer, B 46", L 15.5"-18"; 1 white China silk godets & mm Val lace w/ cream under layer, B 47", L 23", (tiny-0.5" holes to lace, tears & holes lining); 1 pale peach crepe w/ silk lace, L 26"-34", (2 tiny holes in lace, no belt); 3 cotton chemise: 1 w/ Madeira embroidered florals & eyelets, B 41", L 35"; 1 crocheted lace at neck & hem w/ Royal crest & monogram at B, B 36.5", L 39.5", (1.5" seam opening back right strap); 1 lawn w/ scalloped neckline, B 36.5", W 27", L 35", (cut hem, no ribbon, 1" repair left armscyde); 1 pink silk crepe lingerie gown, B 40", L 59", (smattering of stains right hem); 1 lawn dressing robe, 1860s, L 43", (SS's open, few tiny-small holes, 0.5" hole back neck) all fair-very good.

---

## ROMANCE SALE - VINTAGE FOR YOUR VALENTINE



### 55: TAPE LACE BODICES, BOLEROS & CAPELETS, 1900-1920s

USD 300 - 600

1 white cotton tape lace bolero w/ linen needlework, L 14, ("two 0.25" stains right SH, few broken brides); 1 tape lace capelet w/ ruffle, L 9.5"-15", (tiny hole 1 end of ruffle); 1 white tape lace sleeved bolero, L 13"-17", (broken brides, edges fraying); 1 tape lace collar w/ silk needlework, L 3"-9.5"; 1 silk organza w/ lace & ribbon insertions 'Mme. Bonnet, Pau' bodice, B 33.5", W 20.5", L 17", (tiny light spot stains); 1 cream silk satin bias band & fagoted collar, L 5.5-11", (2 broken brides, tiny spot stains CF); 1 ecru tape lace yoke w/ cap sleeves, B 34", L 9.5"-12.5", (broken brides CB above hem, edges fraying); 1 long sleeves tape lace bodice w/ silk insertions & needlework, L 18", (7" left SS opening & 4" right, fraying) all fair-very good.



### 56: FIVE FINE PELERINES, SLEEVES & DICKIES, 1830-1850

USD 300 - 500

1 dickie & sleeve set w/ fine whitework embroidered grape motif, open threadwork, 1840s, dickie L 18", sleeves 21", armscye circ. 21", cuff circ. 16", (discoloration, tiny spot stains at CF lace trim, lace ruffle added); 1 sleeved & collared pelerine w/ Indian embroidered w/ flowers & leaves, 1830s, L 9.5"-13", (1.75" repair CB, 4" repair front SH); 1 bertha w/ fine whitework, ruffled neckline & embroidered net ruffle, 1830s, L 11"-21", (ruffle probably added); 1 Carickmacross shaped shawl, c. 1850, SH-SH 18", L 19"-32", (tiny-0.25" holes throughout, 0.25" seam openings top CB seam); t/w 1 jacket w/ leaf embroidery, 1914, B 35", L 15"-17.5", (leaf trim detaching each end for 2.5" & 3") very good-good.



### 57: FOUR CORSETS, AMERICA, 1910s

USD 300 - 500

1 stamped "Lindsay, August 3, 1893, Flexible Felt Pat. Feb 20.06" & "PAT Mar.19.07 App'd For", B 32", W 23", L 18.5", (dirty, wear to W line, missing left side straps, missing grommets, bones poking through); 2 w/ openwork lace & ribbon insert at top, 1 B 32", W 19.75", L 15.75"-20", (laces N/I, metal oxidizing, stains & discoloration); 1 B 33.5", W 20.75", L 16"-20", (laces N/I, discoloration, buckles missing); 1 w/ scalloped trim, label "Kabo", B 30.5", W 23", L 14.5"-17.5", (laces N/I, staining, metal oxidizing); t/w 1, label "C.B. a la Spirite", B 26.25", W 18.5", L 16.5"-18.75", all good-fair.



### 58: FIVE CORSETS, AMERICA, 1910s

USD 300 - 500

1 lace w/ ribbon insertion, B 30", W 19", L 15.75"-20", (laces N/I, discoloration, straps stained); 2 w/ lace & ribbon insertion & label "American Beauty, TM Reg. U.S. Pat. Kalamazoo Corset Co. Maker", B 29", W 18.5", L 14.75"-17.5" & B 31.5" & B 31.5", W 18", L 14.75"-17.5", (both laces N/I, oxidization, underarm stains, light stains); 1 lace & ribbon insertions, label "C.B. a la Spirite", B 29.5", W 18.25", L 14.5"-20", (laces N/I, discoloration, neckline drawstring damaged); 1 w/ scalloped edge, label "R&G A-350, School Girl", B 24.5", W 20", L 13.5"-15", (oxidizing, discoloration left H, bones poking out, trim worn, light staining); t/w 1 "American Lady, Boned with Mightybone", B 24", W 24", L 15"-17". All good-fair.



### 59: THREE COTTON CHEMISE, 1830-1860s

USD 300 - 500

1 w/ bib front of diagonal banded ruffled & eyelet whitework embroidery, B 44", L 37.5", (light spot stains CF, light discoloration at hem & fold along fold lines); 1 entirely handmade girl's chemise w/ double button hole tie at CF, inset gusset sleeves, 1830s, CH 35", L 30.5", (tiny light spot stains esp. at hem & SHs); 1 w/ insert & edging of floral tating at wide neck opening & sleeves, B 70", L 33", (tiny hole CF above hem, tiny light spot stains to front) all very good.



### 60: TWENTY SIX LA MODE FASHION PLATES, FRANCE, 1848-1849

USD 300 - 500

All hand colored engravings: 15 c. 1848, 6" x 9": 2 January, 1 February, 1 March, 2 April, 1 May, 1 July, 1 August, 2 September, 3 October, 1 December; 11 c. 1849, 5.75" x 9": 3 January, 1 February, 1 April, 2 May, 2 June, 1 August, 1 September, (all w/ yellowing, foxing, creasing & chipped edges) all good- very good. From the Collection of Karen Augusta.

## ROMANCE SALE - VINTAGE FOR YOUR VALENTINE



### 61: GENEROUS LOT OF ASSORTED FASHION PLATES, FRANCE 1870-77

USD 300 - 500

All hand colored engravings: 7 "La Mode Illustrée", c. 1876, 10.5" x 14.75"; 9 "La Mode Illustrée", c. 1878, 10.5" x 14.75"; 4 "La Mode Illustrée", c. 1877, 10.5" x 14.75"; 1 "Le Coquet", c. 1877, 19.25" x 12.5"; 3 "Journal des Demoiselles", c. 1876, 7.25" x 11", (1 not colored); 2 "La Mode Illustrée", c. 1875, 10.5" x 14.75"; 1 "La Mode Illustrée", c. 1870, 10.5" x 14.75", (all w/ foxing, light creasing & chipping to edges, few w/ repaired tears) all very good-fair. From the Collection of Karen Augusta.



### 62: TWELVE ASSORTED MILLINERY & ACCESSORY PLATES, FRANCE

USD 300 - 500

All hand colored engravings: 9 'La Mode Illustrée', 10.75" x 14.75"; 1 'Journal des Demoiselles', c. 1876, 9.5" x 12.75"; 1 'Revue De La Mode', 9" x 13.75", (150 penciled in corner); 1 'L'Art De La Mode', 10.75" x 15.75", (1881 penciled in corner, all w/ yellowing, foxing, light creasing & chipping at edges) all good-fair. From the Collection of Karen Augusta.



### 63: TWO MARY MEIGS ATWATER SHUTTLE-CRAFT BOOKS, AMERICA

USD 300 - 500

1 copy of "The Shuttle-Craft Book of American Hand Weaving", by Mary M. Atwater, c. 1928, 7.75" x 10" x 1", (cover worn, some pencil markings on pages) good- very good; 1 binder "The Shuttle-Craft Guild Recipe Book" by Mary M. Atwater, each page w/ series, number, date, signature & location, c. 1931-1935, 9" x 11" x 1", (cover worn & water damaged, missing some pages, discoloration to pages, some pages escaping binder clips) fair; 5 volumes of "Loom Music", by Mary Sandin & Ethel Henderson, 1949-1953, 9.25" x 11.5", (foxing, worn edges, 2 missing clips) good; 1 "Weaver's Quarterly", by Kate Van Cleve, January 1940, 9.25" x 11" (water damage to cover & w/ creasing) fair-good.



### 64: NOTES ON LACES OF THE AMERICAN COLONISTS, 1926

USD 300 - 500

"Notes on Laces of the American Colonists" by Frances Morris, Associate Curator of textiles at The Metropolitan Museum of Art, published for The Needle and Bobbin Club by William Helburn Inc. c. 1926, 11" x 13" x 0.25", (cover stained & worn, spine & back cover repaired w/ scotch tape, writing inside front cover, very minor chipping to pages) fair.



### 65: NEW YORK COUTURE BUSINESS COUNCIL FASHION PHOTOS

USD 300 - 500

Twenty press release fashion prints from New York Couture Business Council, all 8" x 10.25": 3 'Parnes Feinstein', Spring 1970; 13 'Dorothy Farbo for Mignon', Spring 1968, Spring & Fall 1969; 1 'Monte-Sano & Pruzan', Spring 1968; 3 'Originala', Fall 1969, (all w/ yellowing labels & stained from glue, some w/ light scuffing) all good. From the Eleanor Lambert Archive, FIT Special Collections.



### 66: NEW YORK COUTURE BUSINESS COUNCIL FASHION PHOTOS, 1960s

USD 300 - 500

21 fashion prints, all 8" x 10.25": 1 'Samuel Winston', SS 1965; 1 'Hannah Troy', SS 1969; 3 'Malcolm Starr' & 1 duplicate, SS 1969; 2 'Harvey Berin by Karen Stark' Holiday/Resort, 1964; 2 'Harvey Berin by Karen Stark' SS 1965; 3 'Dorothy Farbo for Mignon', Fall 1969; 1 for 'Montgomery Ward', 1969 ; 1 'Arbe Originals', Fall 1969; 1 'Aquanala', Fall 1966; 1 unlabeled & 1 undated 'For 'Montgomery Ward', late 1960s; 1 w/o info, (all w/ yellowing labels, some w/ light scuffing) all good. From the Eleanor Lambert Archive, FIT Special Collections



### 67: NEW YORK COUTURE BUSINESS COUNCIL FASHION PHOTOS

USD 300 - 500

Twenty press release fashion prints from New York Couture Business Council, all 8.5" x 10": 11 'Cartlyle' Spring 1970 & 1971, (1 damaged); 5 'Tom Nasarre for Junior Sophisticates', three Spring 1969, two Fall 1969, 8" x 10"; 1 'Davidow', Fall 1966, 8" x 10", (all w/ light yellowing at edges, some w/ light scuffing) all good. From the Eleanor Lambert Archive, FIT Special Collections.



## ROMANCE SALE - VINTAGE FOR YOUR VALENTINE



### 68: OSCAR DE LA RENTA PRESS MATERIAL, PORTRAIT & RUNWAY

USD 300 - 500

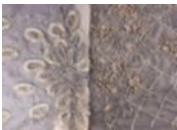
20 Oscar De La Renta runway shots w/ slubs, includes 5 duplicates, Spring 1982, all 8.25" x 10.25"; 2 ft. Styles #5642, #5652, #5632 & #5622; 2 ft. Styles #5687 & #5647; 1 ft. Styles #5513, #5713 & #5303; 2 ft. Style #5308; 1 ft. Styles #5667 & #5677; 1 ft. Styles #5232 & #5252; 1 ft. Style #5621; 2 ft. Style # 5801; 1 ft. Style # 5678; 2 ft. Style #5643; 2 ft. Style #5321; 1 ft. Style #5606 & #05; 1 ft. Style #5609; 1 ft. Styles #5326 & #5336; 3 copies of press release by Eleanor Lambert, 8.5" x 11"; 1 Oscar De La Renta biography, by Eleanor Lambert; 1 Oscar De La Renta portrait c. fall 1982, 8.25" x 10.25", (all w/ light yellowing & minor chipping at edges of press release & bio) all good. From the Eleanor Lambert Archive, FIT Special Collections.



### 69: OSCAR DE LA RENTA PRESS MATERIALS, PORTRAIT & RUNWAY

USD 300 - 500

12 fashion prints w/ 8 duplicates, Fall 1982, all 8.25"x10.25": 2 ft. Styles #3683, #3641 & #3673; 2 ft. Style #3631; 1 ft. Style #3648; 2 ft. Style #3617; 2 ft. Styles #3625 & #3635; 2 ft. Styles # 3232 & #3222; 1 ft. Styles #3102 & #3132; 2 ft. Styles #3619 & #3119; 2 ft. Style #3624; 1 ft. Style #3311; 2 ft. Style #3610; 1 ft. Style #3216; 4 copies of Oscar De La Renta biography, by Eleanor Lambert, 8.5" x 11"; 3 copies of Spring 1982 press release, by Eleanor Lambert, 8.25" x 10.25"; 1 portrait of Oscar De La Renta, 8.25" x 10.25", (all w/ some yellowing at edges & some w/ light scuffing, minor chipping at edges of press release & bio) all good. From the Eleanor Lambert Archive, FIT Special Collections.



### 70: JACK GOLDMAN EMBROIDERY SAMPLES, NEW YORK, 1950s

USD 300 - 500

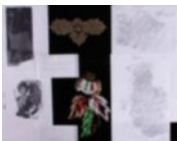
Wd range 5"-19", L 2.5"-24": 3 w/ sequins, bugle beads, faux pearls, rhinestones on silk organza, (1 w/ 4.75" tear, bead loss & "BACK" inked in corner); 2 neckline samples w/ cup sequins, bugle beads, faux pearls & rhinestones, 1 w/ chiffon embroidery on organza, 1 w/ lamé yarn on silk chiffon, adapted by Oscar DLR, (5"x10.5" swatch cut, holes); 3 w/ sequins, rocaille & bugle beads, faux pearls & rhinestones on silk satin, (stains, pulls); 1 silver & bronze lamé yarn over cotton, free hand on Turkish Vermicelli; 1 sequin & crystal beads on pink; 1 blue & white beads & embroidery on plain linen weave; 1 gold rocaille, faux pearls, rhinestones & laminette on wool knit, (bead loss, stains), all as is condition. Jack Goldman Embroidered Archives, FIT Special Collections.



### 71: JACK GOLDMAN NECKLINE EMBROIDERY SAMPLES, NYC, 1940s

USD 300 - 500

Wd range 9.5"-24", L 6.25"-17.5": 1 gunmetal pearls, chalk pink seed beads & lamé yarn, (stains); 1 beads & cutwork on red rayon faille; 1 silver lined bugle & rocaille beads, crystals & rhinestones on synthetic satin; 1 "genuine gold" rocaille beads, faux pearls, gold bullion & lamé yarn on silk taffeta, (stains/, 3.5" swatch cut); 1 beads & faux jewel on synthetic red crepe; 1 w/ copper rocaille & gold bugle & pearls, Bonnaz embroidered laminette cording on rayon crepe; 1 Bonnaz & cotton hand embroidered y on silk faille; 1 crystal iris, cup sequins & pink rocaille on silk organza; 1 crystal & lustré on white satin; 1 beads on satin w/ hand cutwork at neckline; all as is condition Jack Goldman Embroidered Archives, FIT Special Collections.



### 72: OSCAR DE LA RENTA JACK GOLDMAN EMBROIDERY SAMPLES, 1980

USD 300 - 500

Wd range 11"-25", L 8.5"-23": 1 jet beads on synthetic chiffon; 1 beads & sequins on silk chiffon; 1 cup sequins & jet beads on synthetic purple velvet; 1 w/ beads, flat sequins & velvet appliqué on silk taffeta; 2 necklines w/ bugle & lustré beads, sequins, laminette & cutwork on silk organza; 1 bodice w/ silver rocaille beads, embroidery & rhinestones on blue synthetic knit; 1 synthetic black velvet w/ lamé cords & studs; 1 oxblood & black lace w/ glass & plastic beads; 1 hand embroidered & beaded on wool crepe; 1 bugle beads on synthetic satin; 1 w/ bugle bead leaves on black velvet; (most w/ fraying edges) all as is condition; 2 Jack Goldman photocopied notebook rubbings w/ runway reference. Jack Goldman Embroidered Archives, FIT Special Collections.



### 73: THREE VELVET BEADED POUCH PURSES, 1870-1910

USD 300 - 500

1 purple w/ silver frame rosebud motif, lilac silk interior, cosmetic mirror w/ matching pouch, Wd 6.5", Ht 8.5", (tarnish to frame, bead loss at trim) good; 1 green w/ drawstring & steel cut beads, lined in bone silk, Wd 5.25", Ht 6.25", (missing 1 tassel, velvet worn, small tears & stains to lining) good; 1 purple w/ drawstring, steel cut beads & bone silk interior, Wd 5.5", Ht 6", (wear to velvet around opening, 1" light stain, rusted beads) fair; t/w 1 black w/ jet, steel & crystal beads, Wd 8.5", Ht 13".



## ROMANCE SALE - VINTAGE FOR YOUR VALENTINE



### 74: SIX POUCH PURSES, 1910-1930s

USD 300 - 500

1 multicolor beaded looped fringe over net w/ wide range of bead types, circ. 13", L 9", (pulled & fraying strings); 1 fauve inspired panels, looped fringes & rainbow handle on organza, circ. 11", L 10.5", (lining shattered, bead loss); 1 brown bead & chainstitch curlicues, circumference 14", Wd 10", (fraying, bead loss); 1 w/ geometric diamond & rainbow motif, circ. 12", L 10.5", (bead loss, unlined); 1 in shades of blue, green & crystal in chevrons, circ. 12", L 10", (lining faded, bead loss, drawstring fraying); 1 lattice w/ looped fringe & figured band insertion, blue lining, circ. 11", L 12.5", (bead loss in fringe, lining stained) all fair-good.

---



### 75: FOUR BEADED & NOUVEAU FRAME BAGS, 1910s

USD 300 - 500

1 interior colored crystal beads in shades of pink, blue & black w/ openwork frame in floral motif, stamped "Made in Czecho-Slovakia", 7.25"x5.5", (ribbon handle fraying, frame tarnished); 1 pink, blue, grey & black beaded w/ stamped frame in Greek palmette motif, 5.5"x6.25", (bead loss & fraying at straps, frame tarnished, lining shattered); 1 brown & grey blue w/ Gaudí inspired filigree frame, 5.25"x5.25", (lining shattered, mirror damaged, light frame tarnish); 1 iridescent garnet & turquoise beads w/ square Gaudí inspired frame, 3.5"x7", (bead loss, frame tarnish, lining shattered) all fair-good.

---



### 76: THREE DIAMOND SHAPED FRINGE BAGS, 1910-1930s

USD 300 - 500

All w/ deep looped fringe: 1 crocheted w/ ruby colored beads & gold tone frame in geometric guilloché motif lined in cherry silk crepe & silk velvet ribbon, 7" x 14.5", (tarnish to frame, fabric bunched along 1 side) very good; 2 knitted w/ iridescent crystal beads & white metal frames: 1 w/ Art Nouveau frame & rounded bottom, frame likely 1910s, 5" x 13", (wear to lining, slightly tarnished frame) very good; 1 white w/ grape vine embossed frame & pointed bottom, 5.5" x 11.5", (repairs throughout, separating from frame) fair-good.

---



### 77: FIVE BEADED FRAME BAGS, 1910-1920s

USD 300 - 500

1 tan knitted w/ graduated amber beaded loops frame w/ cloisonné w/ pearl accents, Wd 7.5", L 6", (metal tarnished, lining shattered, detaching from frame); 1 w/ midnight iridescent blue beads, Wd 7.5", L 7", (bead loss & 1" of laddering CB at frame); 1 w/ graduated rows of red crystal beads on black silk knit, Wd 8", L 7", (bead loss, several small holes, lining shattered); 1 red silk knit w/ black faceted beaded bands & fringe, printed silk lining, Wd 6", L 7", (metal tarnished, beginnings of bead disease, 0.5" hole 1 side); 1 silk tan knit w/ peacock iridescent beads, Wd 7.5", L 6.5", (metal tarnished, 1" stain 1 side) all fair-good.

---



### 78: THREE WHITING & DAVIS PAINTED ARMOR MESH BAGS, 1920-30s

USD 300 - 500

All stamped "Whiting & Davis": 1 pink & black w/ pink, black & white mosaic frame, Wd 4", L 5.75", (light chipping to paint, tarnish); 1 blue & white w/ embossed frame, Wd 4", L 5.75", (frame & chain tarnished); 1 red & white w/ openwork architectural motif frame, Wd 4", L 7", (frame & chain tarnished); t/w 1 unlabeled silver, black & blue, Wd 5", L 7.5", (paint chipped) all good-very good.

---



### 79: THREE PAINTED MESH PURSES, GERMAN, 1920-1930s

USD 300 - 500

1 yellow, blue & red w/ yellow frame w/ pink enameled roses, blue elongated cabochon set closure, stamped "Made in Germany", Wd 7", L 7", (wear to paint esp. around frame); 1 brass & silver toned stripe, frame w/ green square bezel set stones & 2 tassels, stamped "Germany", Wd 7", L 6", (few missing stones, frame tarnished); 1 blue & pink floral & garland motif w/ pink & blue enamel frame, stamped "Made in Germany", Wd 7", L 6.75", (paint worn esp. around frame & edges) all good-fair.

---

## ROMANCE SALE - VINTAGE FOR YOUR VALENTINE



### 80: THREE TEA DRESSES, EARLY 1910s

USD 300 - 500

1 w/ drawn thread embroidery, French knots & floral motifs to CF & cuffs, fine tucks to CB & sleeves, thread buttons, knife pleated at W band w/ 3 horizontally tucked skirt ruffles, c. 1912, B 38", W 26", L 45", (2.75" stain CF, 0.5" stain right B, three 0.25" spot stains left front SH, 1 detached & included snap, 1 missing faux button, pulls & 0.25" spot stain seat) fair; 1 princess line entirely of lace insertions & cotton lawn w/ 2 crocheted appliqués at either side of B, c. 1911, B 42", W 24", L 56", (neck wire poking out, 2 light spot stains back left knee, 0.75" hole right cuff) good; 1 silk w/ lace insertions & faceted glass buttons to CF, B 47", W 32.5", L 53.5", (light underarm stains, 1.5" tear at bottom of CB hook & eye band) good.



### 81: THREE TEA DRESSES, 1910-1920s

USD 300 - 500

1 white w/ padded Philippine embroidered florals & drawnwork, fillet embroidered fillet insertions, B 39", W 34", L 44", (tiny holes throughout, tiny pulls to CF collar) good; 1 blush silk crepe w/ vertical tucks lace insertions & 2-tiered skirt w/ pleated flounced lace hem, B 42", W 32", L 48", (some basting stitches present & some removed, rust stains at cuffs, missing snaps at W) good-very good; 1 sleeveless & heavily embroidered in classical Greek motif w/ bobbin lace insertions & trim, B 37", W 33", L 42.5", (slip N/I, 0.5" wear front CF upper torso) very good.



### 82: TULLE EMBROIDERED TEA GOWN, c. 1912

USD 400 - 600

Cotton tulle gown w/ Swiss chainstitch embroidery, high neck, draped bodice w/ tucked cummerbund & applied fine needlelace butterfly at left W, long sleeve, trained bell shaped skirt, chemical lace insertions to skirt, silk underdress, B 37", W 29.5", L 64.5"-78", (underarm stains, discoloration, underdress damaged throughout, hem dirty) Fair-good.



### 83: TRAINED TAPE LACE GOWN, c. 1908

USD 400 - 600

Entirely tape lace w/ embroidered net insertions, long sleeve, stand collar w/ CB opening, silk sating edged front & back overlays, silk satin cummerbund W, bell shaped train, B 40", W 27", L 60"-70", (unlined, 1" stain left SH blade, W ribbon damaged, stain left underarm, small remnants of lining) good.



### 84: TWO CHANTILLY LACE SHAWLS, 1850-1860s

USD 400 - 600

1 floral & cornucopia motifs, 79" x 72", (cluster of 0.25", 0.5" & 0.75" holes to 1 edge, edges fraying); 1 w/ floral sprigs, leaves, arabesques & bunches of exotic fruit, 75.5" x 76.5", (edges fraying, pulls near 1 edge) good-very good.



### 85: DEMILUNE CHANTILLY LACE SHAWL, 1850s

USD 400 - 600

1 large Demi lune Chantilly shawl w/ floral bouquets, floral encrusted architectural balustrade & Greek key garland, Wd 121", L 50.5", (light fraying & binding separating at edges, 0.5" hole left side) very good.



### 86: TWO WHITE CHANTILLY LACE SHAWLS, 1850s

USD 400 - 600

1 w/ border of floral spires, acanthus scrolls entwined w/ Queen Anne inspired border motif, center w/ dot & sprig grid, 72" x 65", (pin holes, 1" & 0.5" tears, large mend at center); 1 w/ overall dot grid w/ cascading bouquets of ivy, roses, primroses & fuchsia blossoms at corners, 74" x 87", (7" x 3" mend, pin holes throughout) good.

## ROMANCE SALE - VINTAGE FOR YOUR VALENTINE



### 87: BRUSSELS APPLIQUÉ SHAWL, 1860s

USD 400 - 600

Brussels appliqué shawl w/ central radiating floral medallion bouquet in octagon of entwined florals & leaves, florals sprays enclosed in scalloped border motif w/ overall dotted ground, 98" x 76", (scattered tiny holes) very good-excellent.

---



### 88: TWO LACE APPLIQUÉ SHAWLS, 1870-1880s

USD 400 - 600

Both tulle w/ applied tape lace, fagoting & chemical lace insertions: 1 w/ pseudo vase motif for large bouquet at centers of ends, 19" x 118.5", excellent; 1 w/ baroque motifs, 15" x 110", (several places w/ torn tape, scattered tiny-0.5" holes, slight fraying edges) good.

---



### 89: TWO TRAINED TAPE LACE VEILS, EARLY 20TH C

USD 400 - 600

1 large oval wedding train w/ chainstitch embroidered & tape lace, Wd 104", L 60", (small spots stains & pinholes); 1 very large oval wedding veil w/ trompe-l'oeil center panel, single floral sprigs throughout & fine widely placed point d'esprit, 103" x 97", (few small mends at near top, few scattered tiny-small holes) both very good.

---

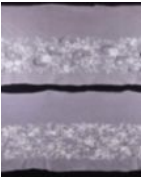


### 90: TWO WEDDING VEILS, NEW YORK, 1920s

USD 300 - 500

1 lace shoulder cape w/ square veil, lined in pink georgette, Wd 27- 37"x107" x 37", (small stains & holes throughout); 1 square tulle train w/ tape lace w/ fagoting, cloche style integrated cap & SH flounce, "Peggy Stoy, New York", 51" x 97", (lg stains, holes to either end of center panel, mending to 1 center panel) both fair.

---

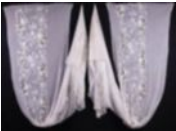


### 91: PRE-EMBROIDERED DRESS FLOUNCE YARDAGE, 1910-1920s

USD 300 - 500

Both fine cotton net w/ heavy padded pearl cotton embroidery in scrolling floral motifs: 1 cutwork scrolls w/ needle lace insertions, 36.5" x 112.5", (raw edges, tiny-1" spot stains, broken brides in openwork); 1 embroidered cutwork, 32.5" x 120", (raw edges, spot stains, tiny holes near edges) both good.

---



### 92: TWO LENGTH OF EMBROIDERED & NEEDLE LACE YARDAGE

USD 300 - 500

1910-1920s: Both w/ large complex needle lace insertions, French knot embroidery & heavy padded pearl cotton embroidery in entwined branching floral motifs, 1, 38.5" x 183.5", (raw edges); 1, 31.5" x 194.5", (raw edges) both very good.

---



### 93: THREE EMBROIDERED FLOUNCE & UNCUT DRESS YARDAGE

USD 300 - 500

1910-1920's, all heavy padded pearl cotton embroidery w/ peking knot filling: 1 cotton tulle w/ scalloped border w/ floral spires motif, 46.5" x 139", (embroidery marking, raw edges); 2 fine cotton net w/ embroidered cutwork: 1 w/ baroque cutwork scroll & florals, 45" x 146.5", (raw edges, 2.75" tear on 1 edge, few small spot stains, tiny holes); 1 w/ openwork scrolls & entwining branching florals, 34.5" x 76.5", (raw edges) good-very good.

---

## ROMANCE SALE - VINTAGE FOR YOUR VALENTINE



### 94: ELEVEN LENGTHS OF PRE-EMBROIDERED UN CUT YARDAGE

USD 300 - 500

1900-1920: 1 Indian embroidered w/ drawn thread work down center, 30.5" x 64.75", (6" x 2" swatch removed from center, light stains); 1 Chinese embroidered in grape vine motif, 39.5" x 87"; 1 flounce yardage scalloped edge w/ graduate dots, 35" x 129", (tiny stains & pull s) 1 w/ drawn thread work swags & butterflies, 38.5" x 80.5", (2" seam opening); 1 handkerchief linen w/ openwork "S" pattern w/ lace insertions, 29.5" x 81.5", (0.25" hole & stain center); 2 uncut dress panels in Madeira embroidery w/ drawn thread roses, 47" x 40", (spot stains) & 1, 37" x 125.5"; 1 w/ Madeira daisies & lilacs, 32.5" x 114"; 1 w/ woven in leaves & dots, 34.5" x 143"; 1 Madeira w/ flowers w/ pearl medallions w/ drawn thread work, 31.5" x 115", (light stains, all w/ raw edges) all good-very good.



### 95: TWO SUMMER BED COVERS & PILLOW SHAMS, 1910-1930

USD 300 - 500

3-pc Italian cotton bed covering & 2 matching pillow shams w/ whitework appliqué & w/ drawn thread work border, all w/ same monogram: 1 large pillowcase, 35.5" x 36"; 1 small pillowcase, 22.5" x 21"; 1 bed covering w/ , 58"-67.5" x 99", all very good-excellent; 1 Madeira embroidered bedcover w/ scalloped leaf, bud & vine motif to flounced edge & in scalloped border of center panel, elaborate monogram in lower right corner, 66" x 84", (tiny-0.25" holes throughout) good.



### 96: TWO DECORATIVE SUMMER BED COVERINGS, 1910-1930s

USD 300 - 500

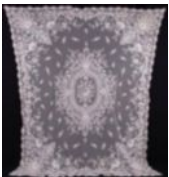
1 cotton tulle w/ Swiss chain stitch embroidery & braided cutwork sections surrounding floral medallions , 98" x 103.5", (tiny-0.25" holes, tiny-1" seam openings at ruffles) good; 1 mesh w/ woven octagonal dot grid, chemical lace imitation needle lace insertions to corners & in central floral lozenge, 81.5" x 107", (scattered tiny-0.5" holes)



### 97: TAPE LACE BED COVER & PILLOW TOPPER, c. 1900

USD 300 - 500

2 pc cotton net bed covering set both w/ inset & appliqué tape lace w/ needle embroidery, brides & buttons: 1 bedcover, 90" x 91.5", (tiny-1" holes throughout, 1.5" hole in ruffle) & 1 matching pillow cover, 28" x 88" bedcover good, pillow topper very good



### 98: TWO APPLIQUÉD TABLE CLOTHS, 1890-1920

USD 300 - 500

1 cotton net w/ mull appliqués in Greek palmette motif, chain stitch & needlework, scalloped edge appliqué border, 92.5" x 83", (tiny-0.25" holes in net, pulls & fraying to appliqué) good; 1 w/ cotton ribbon appliqués in bow motif, corded cotton tape appliqué florals & tape lace scalloped edging, 87.5" x 93.5", very good-excellent;



### 99: TWO ITALIAN FILET LACE & CUTWORK TABLECLOTHS, c. 1900

USD 300 - 500

1 w/ 2 cutwork panels w/ thread brides & center filet panel w/ confronted mythological beast, 104" x 81" w/ 1" tassels, (0.25" hole near center, tassels worn/messy); 1 table covering w/ cutwork & embroidered filet panels w/ natural & mythological beast, filet edging w/ tape lace insert & small tassels, 65" x 103.5" w/ 1" tassels, (few missing tassels) both very good.



### 100: THREE LINEN INTERIOR DECORATIVE PANEL, 1890-1910

USD 300 - 500

1 curtain flounce w/ tape lace insertions in floral & geometric band motifs, 24" x 84.5", (few broken brides & seam openings in lace); 1 linen mantel covering linen w/ drawn thread work, 25.5" x 78.5", (few broken brides); 1 linen dresser scarf w/ tatted & crochet edging, 17.25" x 50", all good-very good.

## ROMANCE SALE - VINTAGE FOR YOUR VALENTINE



### 101: FIVE VICTORIAN & EDWARDIAN SEPARATES, 1850-1900s

USD 300 - 500

2-pc 1880s nutmeg silk taffeta c/o fitted bodice w/ ombre striped pleated panels ruched at SH & W into front drops w/ ruching & self fringe, B 33", W 22.5", L 20"-28", (underarm stains, tiny stains back & left sleeve, 2" stain CF B), matching underskirt, W 26.5", L 38", (pocket stitched shut); 1 black fine silk faille day bodice w/ stand collar, cuff & plastron CF of black silk bobbin lace over cream silk, 1908, B 40", W 30", L 17.5", (silk shattering & yellowing, collar wear); 1 black evening bodice w/ pinked trim, 1860s, B 32.75", W 23.75", L 19", (missing hooks & eyes, neck ties fraying, underarm pads stiff); 1 forest green horizontal striped taffeta skirt, 8 panel skirt full skirt, 1850s, W 24", L 43", (shattering esp. at W band & hem) all fair-good



### 102: COTTON PIQUE GOWN ELEMENTS, c. 1866

USD 300 - 500

4-pc cream cotton pique ensemble c/o basque over jacket, bodice, overskirt skirt & belt w/ long tapered tails, all w/ military inspired two tone brown & white cotton & wool cord applied in gothic frond & floral sprig motifs, jacket B 37", W 33", L 15.5", bodice B 36", W 23", L 22"-25", skirt W 25", L 28"-40", (no buttons or hooks on jacket collar, cuff & plastron CF of black silk bobbin lace over cream silk, taken in, 1" tear right CF hem, spot stains throughout, bodice missing top 3 buttons, taken in at back seams & front darts, spot stains, 0.25" stains right CB, discoloration, skirt discoloration, stains & holes throughout, missing skirt) fair. Museum of the City of New York.



### 103: COLLECTION OF ASSORTED BODICES, 1850-1900s

USD 300 - 500

1 tan w/ black silk velvet extended yoke & cuffs, 1900, B 36.5", W 27", L 15-17.5", (lining stains); 1 nutmeg silk taffeta day bodice w/ pleated blue silk ribbon at cuff, interior watch pocket, 1850s, (bell shaped sleeve altered); 1 blue silk georgette overlay w/ fine drawn thread work collar & yoke, black velvet ribbon w/ embroidered inserted panels, 1908, B 40", W 25.5", L 18.5-23.5", (stain CF, overlay, SHs & underarm); 1 blue brocaded Chinese silk day bodice w/ taffeta SH puffs & peplum, 1880s, B 36", W 25", L 18.5-29.5", (underarm stains); 1 cinnamon silk taffeta monobosom day bodice w/ smocked yoke & sleeves, appliqué silk braid, 1906, B 37.5", W 27.5", L 21, (shattering at SHs & cuffs, spot stains throughout) all fair-good.



### 104: LAVENDER RIBBED SILK PRESENTATION GOWN, c. 1866

USD 400 - 600

2-pc trained ribbed silk lavender gown, fitted bodice w/ CF button closure, faux Van Dyke yoke trimmed in silk velvet bias bands & edged w/ fine silk lace, back w/ deep V double fold bias trim, armscye w/ graduated velvet & lace edged decorative tabs, full trained skirt w/ velvet trimmings to CF for faux apron effect, to sides & into Van Dyke train, exaggerated panache to low left side skirt, B 35", W 21", bodice L 15.5", skirt L 42"-77", (most CF buttons missing or detached & included, fading throughout bodice & in lap, skirt unpicked, gore seams opening, velvet trim detaching & dirty) fair. Museum of the City of New York.



### 105: SILK TAFFETA DAY DRESS, 1860s

USD 400 - 600

2-pc silk taffeta gown in complex geometric broad ribbon stripe in black, white & green w/ fitted bodice, military shaped sleeve & cuff trimmed w/ black bobbin lace, piped neckline, armscye & hem of bodice, bias wool braid hem saver, B 36.5", W 25", L 16.5", unpicked W 185", L 47", (0.25" hole front right SH, underarm stains, missing decorative CF buttons, skirt W unpicked, hem saver worn, three 1" & one 0.5" stains to lap); t/w dress remnants, 20.75" x 124.5", (1 end unevenly cut) good. Museum of the City of New York.



### 106: FIGURED SILK GAUZE EVENING GOWN, c. 1850

USD 400 - 800

2-pc cream & brown figured silk gauze gown printed in bud & branch motif, broad scooped neckline to double ruffle cap sleeve, deep multi pleated & gathered to CF deep V, CF invisible hook & eye closure, bodice lined in cream cotton, full skirt w/ single deep tucked ruffle & turn back hem creating horizontal contrast, B 35.5", W 25.5", L 13"-17", skirt W 25.5", L 43.75", (bodice taken in at sides, shattering to gauze, wear at CF opening, cord detaching CF bodice hem, skirt shattering throughout, 0.75" repair at W, 2 large repairs lap) poor-fair. Museum of the City of New York.



## ROMANCE SALE - VINTAGE FOR YOUR VALENTINE



**107: YELLOW SILK EVENING GOWN, c. 1850**

USD 400 - 600

2-pc gown of ribbed yellow silk taffeta w/ broad scoop neck, short tube sleeves, lightly boned bodice w/ deep triple darts to CF V-waist, CB lacing, wide bell skirt w/ deep knife pleated gathers from front to CB, B 33", W 26.5", L 13"-17.5", skirt W 25", L 42.5"-44.5", (pinholes CF neckline, water staining throughout, no CB lacing, 1 detached CB skirt hook, 0.5" tear CF knee, CF bows probably later addition) good. Museum of the City of New York.



**108: BROCADED CHANGEANTE SILK TAFFETA DAY DRESS, c. 1858**

USD 400 - 600

2-pc two tone floral brocaded changeante silk taffeta day dress in cinnamon brown & blue, shaped bodice w/ narrow standing collar, invisible CF hook & eye closure, cap sleeve trimmed w/ brown silk passementerie over deeply pleated upper arm puff to fitted long sleeve w/ turn back ruffled cuff, full skirt w/ deep directional knife pleats from CF to CB, B 35.5", W 24", L 15.5"-17.5", skirt W 25", L 44", (bodice lining dirty, 5" stain CF B, bodice worn, two 0.25" holes left SH blade, light spot stains to skirt esp. at lap & left sides, hem saver & skirt facings worn/ damaged, two 0.5" holes left of CB W, missing hook) fair. Museum of the City of New York.



**109: PRINTED COTTON DAY DRESS, c. 1855**

USD 400 - 600

Printed cotton voile dress w/ diamond & miniature shaded tree pattern in alternating pink & white, broad scooped neckline edged w/ double piped band & drawstring, open pagoda sleeve w/ double dropped SH poof, sleeve edged w/ self-puff & applied self-ruffle, narrow lace trim to top of bodice & sleeves bodice w/ vertical gathers from neckline to W front & back, cartridge pleated attached skirt w/ broad hem flounce, matching pelerine, B 44.5", W 25.25", L 58", capelet L 13.5"-16", (repairs to both SHs, 2.25" repair CF B, 1" hole right underarm, trim detaching at cuffs) fair. Museum of the City of New York.



**110: BLACK SILK GAUZE GOWN, c. 1866**

USD 400 - 600

Renaissance inspired gown of black silk gauze, front & back bodice yoke horizontally ruched w/ vertical persimmon silk velvet ribbon accents, Juliet sleeve w/ rows of ruching & edged same silk velvet accents, rows of vertical ruching from W to hem, broad hem band w/ 3 bands of horizontal ruching edged w/ velvet ribbon, wool hem saver, B 36", W 23.5", L 57"-68", (fabric shattering & fragile throughout, collar shattering, six 0.5" repairs, 3.5" repair right side above hem) poor. Museum of the City of New York.



**111: ONE MAISON DIEULAFAIT & THREE UNLABELED CAPELETS, PARIS**

USD 400 - 600

1855-1880s: 1 black cisele velvet dolman style jacket w/ brown patterned ground & bud motif, stand collar, CF opening & hem trimmed w/ black chenille & covered corded spheres, label "Maison Dieulafait", SH-SH 17", L 25"-29.5", (W tie detached, slight fringe loss) very good; 1 handmade fine wool taupe SH cape, SH-SH 16", L 18"-22", (3 tiny holes right CF & 1 right SH, CB trim loose) good; 1 handmade purple silk taffeta dolman style cape w/ 3 tiered brocaded ribbon ruffles, SH-SH 16", L 22.5"-29", (trim detaching 4.5" right SH, 0.75" & 1" seam openings at left CF, discoloration at front) good; 1 purple to green quilted changeante cape, SH-SH 18.5", L 27.5", (shattering & worn edges, fading, 3.5" seam opening left CF, tiny-1" holes in lining) fair.



**112: ONE DUSTER & ONE CLOAK, 1865-1867**

USD 300 - 500

1 duster of tan textured & treated cotton w/ Peter Pan collar, CF gutta-percha button closure, incorporated dolman sleeve back cape, front H patch pockets w/ 2 decorative buttons, c. 1865, B 56", L 47"-48.5", (staining throughout, wear to buttons) good; 1 black wool & white cotton twill cloak w/ dolman sleeved incorporated capelet edged w/ triple scalloped wool braid, CF self-covered wooden buttons, decorative hood lined in silk taffeta, trimmed w/ wool braid & w/ black silk taffeta bow, slightly ruffled broad hem band scalloped at both edges & w/ applied double wool braids, 1865-1867, B 60", L 44"-51", (staining throughout, 2 belt openings sewn shut, wear, 0.25" hole CF by knee) fair. Museum of the City of New York.

## ROMANCE SALE - VINTAGE FOR YOUR VALENTINE



**113: ELABORATELY EMBROIDERED DOLMAN CAPE, c. 1865**

USD 300 - 500

French black velvet dolman style cape w/ embroidered leaves & florals in French knots, chain stitch, bullion stitch, satin stitch & jet beading, applied Chantilly & Maltese lace medallions, passementerie, petit gland edging over Chantilly lace at hem, corded CF paired button w/ jet highlights & looped frog closure, quilted lining, SH-SH 16", L 40", (bead disease on buttons, lining torn, 0.25" stain CF B, interior W cord removed & patched over, padded embroidery worn) good; t/w 1 woman's wool coat of black broadcloth, c. 1870, (missing most buttons) & 1 velvet dolman style cape w/ beading & fringe, Museum of the City of New York.



**114: MILITARY INSPIRED LADIES BROADCLOTH COAT, c. 1915**

USD 200 - 400

1 taupe fine wool broadcloth, scalloped collar, cuffs & pockets edged w/ silk faux military braid & multiple rows of soutache, asymmetrical front closure w/ cloth covered buttons, stylized fabric faux frogging extending from front princess seaming to mid CB, full sleeves gathered into SH & w/stitch down pleats above cuff, pale pink half silk lining, B 40", L 49", (lining shattering at SHs & neckline, tiny-small moth holes & snacks throughout, wear & light staining to buttons & loops) fair.



**115: TWO EVENING GOWNS, 1930s**

USD 300 - 500

1 black levers lace lingerie worn w/ buckram hem & structured SH, CF ecru silk & self-covered buttons, fitted bodice & bell shaped skirt, overdress only slip N/I, B 32", W 26", L 59", (staining to silk buttons) very good; 1 sleeveless cream silk charmeuse evening gown w/ rhinestone & crystal encrusted SH bands, ogive pieced H panels w/ attached flounce, B 36", W 32.5", L 54"-57.5", (3 tiny-0.25" tears to right front SH, beaded straps detached at front, 0.75" hole right SH strap) fair-good.



**116: METALLIC LACE EVENING GOWN, c. 1934**

USD 300 - 500

Gold metallic drouget patterned lace floor length gown w/ V-neckline to revers at CF, vertical gathers over double cording at bodice, inserted flared panels to lower half of skirt & slight train, matching bolero w/ self bow at CF closure, & original self belt w/ paste rhinestone buckle, B 37", W 29", L 61", (bands of tarnish especially at lap, hem & jacket neck & underarms, staining to lining of jacket) good.



**117: EMILIO SCHUBERTH COUTURE EVENING GOWN, ROME, c. 1953**

USD 2,000 - 4,000

Cream silk satin strapless evening gown w/ broad turn down cuff neckline to dual asymmetrical cascades at CB, fitted princess line bodice to full flared skirt w/ slight train, sweeping embroidery across bodice to left side & at right back W in 3D wrapped silver vines bound w/ gold tone bullion & layered 3D roses & foliate in shades of pink, ivory & green w/ sequins & paste round brilliants, label "Emilio Schuberth, Roma", B 35", W 22.5", L 52", (label moved, shattering at neck, holes & stains to petti coat & shattered at zip, bones poking out) fair- good. Exhibited at 'Fondazione Mondragone Napoli, Museo del Tessile e dell-Abbigliamento', July-October, 2004. Featured in "Lo Spettacolo della Moda", pg 52 & "Moda Italiana, 1950-1970", pg 30.



**118: GALLENGA STENCILED SILK VELVET EVENING COAT, ITALY**

USD 2,000 - 3,000

Merlot silk velvet evening cape w/ silver & gold stenciling in stylized Persian inspired garden, leaf, Griffin & peacock motifs, attached ruched self collar w/ extended tie & large decorative tassels, black, white, & red Murano glass beads as seam inserts to top of SH, around armscyce & down SS, at end of kimono style sleeves, & used w/ gold cording pleated velvet at top of tassel, CF hook & eye closure, SH-SH 24.5", L 45.5", c. 1910-1920, (messy tassels, 4" seam opening & bead loss right SH, missing closures, bead loss left SH, 15" visible hem stitches right side, stitches for rolled hems at seams visible & pulling throughout, light discoloration CB & collar, light tarnish throughout) fair-good.

## ROMANCE SALE - VINTAGE FOR YOUR VALENTINE



**119: EMILIO SCHUBERTH EVENING GOWN, ROME, c. 1953**

USD 2,000 - 4,000

Strapless cream silk satin evening gown w/ inset cerise midriff overlaid w/ cream daisy appliqués outlined in black faceted & mini bugle beads, cerise satin poppy bouquet appliqué to front of skirt w/ black embroidered contouring, red edging & ombré green silk floss leaves, double band of daisies embroidered w/ black beads swagged from CB & around front hemline, custom petticoat included, c. 1953, B 32.25", W 30", L 51.5", (repairs CB closure & bodice, hem dirty & stained, repair CB hem, shattering throughout, minor bead loss) fair. Exhibited at 'Fondazione Mondragone Napoli, Museo del Tessile e dell-Abbigliamento', July-October, 2004. Also featured in "Lo Spettacolo della Moda", page 46 & "Moda Italiana, 1950-1970", page 48.



**120: GABRIELLE CHANEL COUTURE EVENING CAPE, c. 1923**

USD 20,000 - 40,000

Fuchsia silk satin evening cape w/ heavily embroidered border bands in leaf motif of ombré silk floss & metallic thread, Kitmir embroidery, label "Gabrielle Chanel, Paris" & hand inked number "555", SH-SH 19", L from CB, 47", (few small seam openings & wear at SH linings, small dark stains to interior collar, label detached at 1 side, tie tacks detached at SHs) very good.



**121: FILM WORN CONVERTIBLE EVENING GOWN & CAPE, AMERICA,**

USD 400 - 800

2-pc scarlet crepe convertible evening gown & cape, halter back gown w/ CF slit & diamond shaped train which converts to single long sleeve w/ asymmetrical drape at back, trained asymmetrical cape w/ padded SHs fastens to left side of dress & wrap at right w/ long Grecian drape over right SH, worn by actress Faye Dunaway in 1979 movie "The Champ", B 34", W 27", L 60", (scattered pulls to crepe in both dress & cape) very good.



**122: PEDRO RODRIGUEZ COUTURE BEADED COCKTAIL DRESS, SPAIN**

USD 400 - 600

Ivory silk faille dress w/ square neckline based on 16th C high fashion portraits, sleeveless, fitted bodice w/ princess seaming to flared skirt pleated over Hs, encrusted in horizontal beaded bands of crystal seed & bugle beads, turquoise faux pearls & prong set paste round brilliants in designs based on Hispano Moresque architectural relief patterns found in palace ceilings, label "Pedro Rodriguez, Madrid, Barcelona, S. Sebastian", B 34", W 24", L 37", 1960s, (tiny dark stain left seat, bead loss) very good.



**123: YSL FOR DIOR EVENING DRESS, c. 1959**

USD 500 - 800

Bronze silk taffeta strapless evening dress w/ wide W sash into oversized CF bow over gathered bodice & double tiered bubble skirt, built in boned bodice, hook & eye & snap closures, label "Dior London, 18582", B 33.5", W 23.5", L 40", (shattering esp. at neckline, hem & some folds) fair.



**124: EMILIO SCHUBERTH EVENING GOWN, ROME, c. 1950**

USD 2,000 - 4,000

Cream silk satin strapless evening gown w/ surrealist aquatic biologically inspired velvet appliqués in pink, blue, mustard & moss green heavily embroidered in silk & metallic braid, hand painted coral buds, boned bodice & custom petticoat included, B 36", W 25.5", L 49", (missing appliqués, staining lower half, shattering in some appliqués, hem modified & soiled) fair-good. Exhibited at 'Fondazione Mondragone Napoli, Museo del Tessile e dell-Abbigliamento', July-October, 2004. Also featured in "Lo Spettacolo della Moda", page 44 & "Moda Italiana, 1950-1970", page 27.



**125: TWO DESIGNER DRESSES, 1960s**

USD 300 - 500

1 black silk sleeveless cocktail sheath w/ scoop neck & princess seamed front, straps w/ applied black silk bows to SHs to straight gathered back neckline, left underarm zip closure, label "Oscar de la Renta", B 33", W 29.5", L 35", (1 bow & back right SH strap detaching) very good; 1 cream wool blend jumper dress, decorative black buttons at SH straps front & back, inserted navy corded W tie, 2 square patch pockets front Hs, CB button closure, label "Courreges", B 32", W 28", L 40", (spot stains to B & lap) good.

## ROMANCE SALE - VINTAGE FOR YOUR VALENTINE



**126: TWO DESIGNER HOSTESS DRESSES, FRANCE & AMERICA, 1970s**

USD 300 - 500

1 black, orange, brown, white & olive foliate print w/ broad swallow tail collar, long bishop sleeves w/ single self button cuff, CF self covered button closure & original wrap belt, label "Lanvin, Paris, New York", B 43", W 41", L 54.5", (pulls to collar, light line stains at back W) very good; 1 white kimono inspired gown w/ rows of faux hemstitch drawn work stripe, plunging V crossover neckline to wide obi inspired W, 3/4 length attached kimono sleeve, skirt knife pleated into W line, fully lined w/ nude underdress, CB zip closure, label "The Eva Gabor Look by Estevez", B 38.5", W 33", L 58.5", excellent; t/w black taffeta ruffled gown, label "Oscar de La Renta"



**127: TWO BONNIE CASHIN ENSEMBLES, AMERICA, 1953-1965**

USD 300 - 500

3-pc ensemble of cream wool coat w/ oversized loose plaid in red, lilac & brown-green w/ cream leather bindings, double oversized patch SS pockets & brass toggle closures, leather skirt w/ brass closure left H, unlabeled cashmere sheath, 1960-1965, coat & skirt "Sills, a Bonnie Cashin Design", B 47", L 36.5", SH-SH 18", dress B 44", W 42", L 40", skirt W 28", L 24", (metal oxidizing, light stains dress SHs, sm scuffs & stains skirt hem, W band worn); 3-pc: skirt & swing coat in cream, green & brown novelty weave & cashmere turtleneck, 1953-1957, jckt label "A Bonnie Cashin Design, Sills & Co", B 60", L 38.5", SH-SH 18", skirt W 30", L 26.5", sweater label "Bonnie Cashin, Exclusively for Saks", B 38", W 30", L 27", (tiny hole collar) all good-very good.



**128: TWO BONNIE CASHIN BLACK LEATHER ENSEMBLES, AMERICA**

USD 300 - 500

Both label "A Bonnie Cashin Design, Sills & Co.": 1 skirt set: jacket w/ wool faced shawl collar & cuff in cream, black & green, elastic W, short flared peplum & matching skirt w/ CF pearlized snap closures, 1952-1957, label "Maison Mendessolle, San Francisco", B 43", W 24"-35", L 22", skirt W 24", L 25", (1" & 0.25" wear spots right cuff, label detaching, wear to W band & seat, smoky); 1 pant set: jacket w/ black ribbed knit shawl collar, CF closure, oversized H pockets to faux belt H tabs & stovepipe t rousers w/ 2 front slit pockets & inset SS panel to buckle CB, 1952-1957, B 42", W 36", L 25", pant W 26", L 41.25", inseam 29.5", (tag detaching, two 0.25" light marks CF W & one 2Å" at SH blade, buckle at CB W worn, scuff left knee, smoky) all fair-good



**129: TWO INTERCHANGEABLE BONNIE CASHIN BLUE & GREEN ENSEMBLE**

USD 300 - 500

Both coats labeled "A Bonnie Cashin Design, Sills & Co.", 1955-1964: 2-pc c/o hooded mohair plaid coat in shades of green, yellow & red w/ green suede bindings & CF brass clip closure & green cashmere sweater w/ overlapping collar & brass button closures, sweater label "Made in Scotland Expressly for I. Magnin & Co. by Ballantyne, Designed by Bonnie Cashin", coat B 56", L 36", sweater B 38", W 31.5", L 23", (hole right SH & coat sleeve & light wear to suede, 0.25" CF stain on sweater)good; 2-pc c/o wool coat in blue & green oversized plaid coat w/ ring collar, suede bindings & CF tie closure & teal wool dress w/ suede bindings & snap closures, B 56", L 39", dress B 40", L 43.5", (dress unlabeled, dress seam opening left armhole, tiny-0.25" stains) very good- good.



**130: THREE BONNIE CASHIN OVERCOATS, AMERICA, 1960-1965**

USD 300 - 500

1 charcoal wool twill w/ notched shawl collar, black leather bindings to collar, cuffs, CF opening & hem, semi-circular SS pockets, CF leather buckle closure, 1960-1965, label "A Bonnie Cashin Design, Sills & Co.", B 47-49", L 42.75", SH-SH 19", (leather strap for buckle worn, 0.75" blue stain CB, 0.25" snack right SH blade); 1 double faced oatmeal wool coat w/ draped caplet collar, brass tie tack CF closure, tie belt & bindings in cream leather, oversized SS pockets, 1960-1966, label "Sills, A Bonnie Cashin Design", B 48", L 44", SH-SH 18.5", (pin oxidizing w/ small transfer at left CF, seam openings belt); 1 tan corduroy w/ CF button closure, 1970, label "Sills, A Bonnie Cashin Design", B 36", L 43.5", SH-SH 18", (light stains right CF W) all good.



**131: PHILIPPE VENET SCARLET WOOL DAY COAT, 1970s**

USD 200 - 400

Scarlet felted wool day coat w/ convertible collar, single breasted CF button closure, bound button holes, single silk covered snap at clavicle, bracelet length sleeves w/ single decorative button, frock coat vent at CB W, label "Philippe Venet, Boutique Paris", B 40", W 38", L 41", (wool lightly worn, light wear to buttons) very good.

## ROMANCE SALE - VINTAGE FOR YOUR VALENTINE



### 132: TWO SCHIAPARELLI & ONE PAULETTE STRAW HATS, PARIS, 1950

USD 200 - 400

1 celadon deep, elongated turn back brim w/ seafoam green band & natural straw crown, green grosgrain ribbon band, label "Schiaparelli, Paris", circumference 21", L 14", Wd 10", height 6", size 6.75, (discoloration to seafoam band), very good; 1 of double layered black & tan braided straw w/ turned up brim & black crown, labels "Schiaparelli, Paris" & "Made in Italy", circumference 20.75", L 14", Wd 14", height 6", (fraying to straw, label attached glued, squished) fair; 1 black & white straw w/ pudding hat brim & CF bow, label "Paulette", circumference 21.25", L 9", Wd 9", height 5", (slightly misshapen) very good.



### 133: FOUR LADIES HATS, PARIS & NEW YORK, 1910-1930s

USD 200 - 400

1 black mohair plush & fur w/ 2 red dyed turkey feathers, circumference 22.5", height 6", size 7.25, (feathers damaged) very good; 1 tan fur felt reproduction cloche, 1960s, label "Berkshire Hat, Paris", circumference 22.75", L 8", height 7", size 7.25, (lining detaching & w/ holes, small wear spots to felt) good; 1 red fur felt cloche w/ blue velvet ribbon band & draped bow, shaped brim, label "Gibbe Hat, Paris, New York", circumference 21.5", height 6-8", size 6 7/8, very good; 1 red straw w/ gros grain infinity ribbon applique, circumference 21.5", L 9", height 7", good; 1 bugle beaded & silver & gold embroidered cloche, circumference 22.25", height 7", size 7 1/8, (lining damaged, lamé fraying, slight bead loss at crown) fair-good.



### 134: TWO STRAW HATS W/ FLORAL APPLIQUES, AMERICA, 1918-1920s

USD 300 - 500

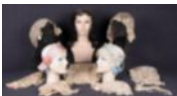
1 black lacquered straw w/ oval crown & deep brim, left side panache of black gross grain ruffle & oxblood & black ruched silk georgette, silk wheat flowers w/ horsehair & 2-tone lilac cluster, oxblood, black, orange & purple bands of ruched silk georgette underbrim, label "Fleurette, Springfield, Mass.", size 7 1/4, circumference 22.75", Ht 6", (slightly misshapen, front of crown dirty) very good; 1 black straw brimmed cloche w/ pink straw flower & chiffon & cotton petals, black gros grain ribbon, label "Gage Brothers & Co. Paris, New York, Chicago", size 7 1/8, circumference 22.5", Ht 7", (1 straw flower detached, florals fraying, spot stains florals, light 7" stain to crown, misshapen) fair. From the Collection of Karen Augusta.



### 135: TWO WIRE BRIMMED CARTWHEEL HATS, AMERICA, 1910s

USD 300 - 500

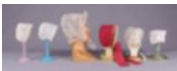
1 black horsehair lace over black wire, crown w/ silk flowers & embossed petals w/ black horsehair overlay, black silk ribbons at CB, size 7 5/8, circumference 24", Ht 6", (fabric torn & separating from wire brim, tear at crown, spot stains to white flowers); 1 silver mesh w/ gold lame patterned brim & crown insert over wire frame, crown of blue silk velvet w/ oversized pale blue silk satin & velvet floral, label "Gage Brothers & Co. Chicago, Paris, New York", size 7 1/4, circumference 23", Ht 6", (moth holes to crown lining, satin flowers shattering) both fair.



### 136: BOUDOIR CAPS & HEADBANDS, 1910-1920s

USD 300 - 500

2 headbands: 1 lavender silk & cream lace, circ. 26", Wd 3.5", (ribbon fraying) & 1 seafoam & cream lace headband, label "Simonettes", circ. 24", Wd 5"; 1 black embroidered silk chiffon cap, circ. 31", (outer layer shattering, 0.5" & 0.75" holes in ruffle); 1 cream net w/ chain stitch & crocheted flowers, circ. 26.75", (silk band shattered, light stains); 1 cream lace w/ bands & bows of sea-foam silk satin ribbon, circ. 25"; 1 cream net & lace w/ pink ribbon & open crown, circ. 24", (ribbon fraying); 1 cream net & lace w/ pink ribbon rosettes, circ. 22.5"; 1 cream lace w/ 2 seafoam bows, circ. 28"; 1 cream net & lace w/ peach ribbon, circ. 28"; 1 cream lace w/ tails & ombre silk ribbon flowers, circ. 24", (most w/ discoloration, spot stains) all fair-good.



### 137: BONNETS, LACE & SALESMANS SAMPLE, 19TH C

USD 300 - 500

1 red silk w/ plush trim, 1880s, 20 x 7", (trim & ribbon fraying); 1 embroidered net w/ leaves, 1830s, 5.5x6", (holes, ribbons fraying, light stains); 1 bonnet crown, 1820s, 9.75 x 9.25", (light spot stains, 1.25" seam opening); 1 net embroidered w/ ruffle, 1830s, 9.5" x 10", (repairs at ties, small tears & stains); 1 cotton w/ feather stitch, 1860, 5.5"x5.5", (tie casing torn at ends); 1 embroidered net w/ backing, 1820s, 4.75" x 5.25", (tiny holes, stains); 1 w/ eyelet flowers, 1840s, 5.25" x 5", (repairs, sm tears & stains); 1 w/ round net inserts, 1840s, 5" x 6", (fraying edges, hole in CB); 2-pc bobbin lace, 1840s, 3.75" x 39" & 23"; 1 dickie salesman sample, 9.75"x13"; 1 loop lace, 1820s, 23" x 4.25", (fraying); 1 handmade long lace, 37.5" x 39", (stains) very good-fair



## ROMANCE SALE - VINTAGE FOR YOUR VALENTINE



### 138: FOUR ENAMELED TRAVELING ACCESSORY SETS, AMERICA

USD 300 - 500

Early 20th C, 1 green leather case w/ 5 perfume bottles each w/ row of painted florals & copper guilloché enameled tops, 4" x 4" x 4.75", (dirty, 0.5" chip to enamel on yellow cap, leather worn & cracked, metal tarnished) fair; 1 red case w/ enameled scissor & thimble, 3.75" x 5.5" x 1", (cover dirty & lightly worn, sewing accessories tarnished) good; 2 blue leather cases w/ guilloché picture frames, label "Udall & Ballou/574 5th Ave. Newport/New York R.I.", one 4.5" x 6" x 1", one 4" x 5.25" x 1", (missing screws connecting frames), (both w/ worn, scratched & stained covers, lining stains, frame tarnish & glass panes chipped) both fair.



### 139: THREE TRAVELING TOILETRY SETS, SAN FRANCISCO

USD 300 - 500

1 rose leather case w/ lipstick tube, comb, mirror, flask, 2 bottles, compact, notepad & pencil, embossed "Shreve & Company, San Francisco", 4.75" x 4.5" x 1.75", (leather & lining worn, metal tarnished, notepad worn); 1 black envelope case w/ complete mans manicure kit of amber celluloid w/ faux MOP inlays, 8" x 5.25" x 1.25", (leather cover worn, satin lining dirty, metal tools beginning to rust); 1 Art Deco blue, green & bronze w/ green lucite accessories, 10.5" x 7.75" x 1.5", (worn, pad on applicator worn, handles lightly scratched) all good-fair.



### 140: TWO LUCITE OR BAKELITE DRESSING SETS, 1930s

USD 300 - 500

1 Bakelite set, items ranging in size 4"-13": 1 glass jar w/ bakelite lid, (lid scuffed); 1 rectangular box, (velvet faded, hinge detached); 1 large comb, (paint worn); 1 small comb, (chipped, tines warped); 1 mirror; 1 shoehorn, (paint worn); 1 hairbrush, (bristles bent & falling out); 4 small manicure tools, (most w/ some rust); 1 blue set, items ranging in size 4"-12": 1 file, (tarnish); 1 scissors, stamped "Gilco, Germany", (rust, fading); 1 comb; 1 glove hook, (tarnish); 1 nail buffer, smooth handle, (pad worn & dirty); 1 nail buffer w/ perpendicular handle, (plastic & pad dirty); 1 hairbrush, (bristles bent & broken); 1 mirror, (stains); 2 round boxes (1 w/ stains); 2 small manicure tools, (most w/ wear & light scratches) all good-fair.



### 141: EIGHT GUILLOCHE ENAMELED ACCESSORIES, AMERICA

USD 300 - 500

1910-1930s: 1 double sided lipstick tube w/ aqua enamel, stamped "Pat Aug. 15, 1922, USA" & "Sterling", 0.5" x 2.25" x 0.5"; 1 tape measure, stamped "Sterling", 1.25" x 1.25" x 0.5", (tape worn); 1 enamel vial w/ pink roses & butterflies, stamped "Sterling", 1" x 2" x .05" (cap slightly misshapen); 1 vial w/ pink top, stamped "Sterling", 1" x 3" x 1"; 2 blue vials, label "Evening in Paris, Perfume Bourjois, NY", gold cap 0.75" x 3.25" x 0.75", (tassel frayed), brown cap 0.5" x 3.25" x 0.5", label worn, sticker residue); 1 silver vial, 1.25" x 2.75" x 0.5", (scratched); 1 pink flask, 1.75" x 2.25" x 0.5", (tiny chips); glass vial w/ blue enamel stamp "925" w/ hallmark, 1.25" x 1.75" x 1.25", (all w/ minor tarnish) all good-very good.



### 142: SIX COMPACTS, AMERICA, 1930-1940s

USD 300 - 500

1 cream & brown w/ mirror & brushes, 2.75" x 3.25" x 1", (scuffed, lightly dirty); 1 green scallop shell w/ mirror, lipstick & blush compartments, label "Elgin American", 2.75" x 3" x 0.75", (tarnish, mirror worn, shell lightly worn & dirty); 1 carved round red rose compact, 3" x 3" x 0.75", (mirror damaged); 2 celluloid molded rose motif "Trio-ette by Platé" double sided powder compact w/ lipstick tube in handle, 1940s: 1 ivory 2.75" x 4.5" x 1", (scuffed, dirty, stained from lipstick near handle) & 1 pink, 2.75" x 4.5" x 1", (mirrors scratched); 1 nude pink mini clamshell style box, 3.25" x 2" x 1", (chain tarnish, scuffed, dirty) all fair-good.



### 143: FIVE LUCITE HANDBAGS, AMERICA, 1953-1960

USD 300 - 500

1 dark grey pearlescent w/ silver metallic floral frame to bottom edge & clear handle, 1953-1957, stamped "Llewellyn Inc, NYC", 8.5" x 6.5" x 4", (tarnish to frame); 1 rectangular w/ metal floral frame, unlabeled Tyrolean, 6.5" x 4" x 4.5", (metal tarnish, residue behind frame); 1 w/ gold lattice motif & painted fish on lid, label "Majestic 7/10", 7.75" x 3.5" x 5.5", (metal scratched & tarnished); 1 peach pearlescent w/ beaded flower to lid, c. 1958, featured on "Carry Me" pg. 50 label "Original Rialto, NY", 7.25" x 5.5" x 5", (dirty, metal tarnished); 1 gold & rainbow glitter, unlabeled Florida Handbags, 1953-1960, 8" x 3.5" x 4", (label removed, metal tarnished, slight chipping at edges) all fair-very good.

## ROMANCE SALE - VINTAGE FOR YOUR VALENTINE



### 144: FOUR LUCITE HANDBAGS, AMERICA, 1950s

USD 300 - 500

1 cylindrical w/ white & gold speckling & gold tone lid & hardware, label "Majestic", 5" x 5" x 5.75", (lid tarnished, scratched & rusted, mirror damaged); 2 circular w/ flat back & carved clear lids, both label "Original Rialto, NY": 1 dark grey pearlescent, 6.5" x 6.5" x 4.5", (lightly scratched); 1 round black, label "Original Rialto, NY" 6.75" x 6.5" x 4", (right side warped, scratched & worn, metal tarnished, clouding at lid by closure, secretion); 1 pale gold pearlescent cylinder w/ gold tone feet & elaborating carved end panels, 6.5" x 5" x 5.75", (glue browning & staining plastic, metal tarnish, pearlescent layer cracked & missing for 3" x 1.75" at back) all fair-good.



### 145: FIVE LUCITE HANDBAGS, AMERICA, 1950s

USD 300 - 500

1 round pearlescent w/ clear handle & lid, probably unlabeled Rialto 7.5" x 7" x 4.5", (minor chipping, lid scratched, mirror damaged at edges, dirty); 1 pearlescent rectangular w/ twisted handle, label "Florida Handbags, Made in Miami", (large crack on back panel, scuffs, dirty); 1 pearlescent white w/ smooth handle, Florida Handbags, 1953-1960, 8" x 4" x 4", (label sticker removed, 1.5" crack back left corner, dirty); 1 octagon w/ lattice carving & rhinestones, 1953-1957, label "Florida Handbags, Made in Miami", 6" x 4.75" x 4.75", (sticker peeling); 1 rectangular w/ rhinestones, 1951-1957, label "NYC Llewellyn Inc.", 9.25" x 5" x 3.5", (some stones yellowing, handles scratched), (all w/ metal tarnish) all fair-very good.



### 146: VINTAGE CARVED CELLULOID BANGLES, EARLY-MID 20TH C

USD 300 - 500

1 pair mid century pastels w/ nautilus rose & leaf motif: 1 pale blue, circ. 8", Wd 1.5" & 1 pale green, circ. 8.5", Wd 1.5"; 1 teal w/ leaf & flower motif, circ. 8", Wd 0.5", (few small chips & scratches); 1 clear w/ rose & leaf motif, circ. 8", Wd 0.5"; 2 brick red w/ carved rose & leaf motif, circ. 8", Wd 0.75", (light scratches); 1 moss green w/ carved nautilus rose & leaf motif, circ. 8", Wd 1", (light scratches) all good.



### 147: VINTAGE CELLULOID OR LUCITE GEOMETRIC BANGLES, MID 20TH

USD 300 - 500

19 bangles: 3 lime green triangular, circ. 8", Wd 0.125", (slight discoloration to edges, tiny chips); 2 lime green octagonal, circ. 8", Wd 0.25", (discoloration to edges); 3 green octagonal, circ. 8", Wd 0.25", (light chipping); 5 dark teal octagonal, circ. 8", Wd 0.25", (wear to edges); 6 yellow octagonal, circ. 8", Wd 0.25", (discoloration, wear to edges), (all w/ light scratches) all good-very good.



### 148: NINE SHULTZ BANGLES, AMERICA, MODERN

USD 300 - 500

1 striped checkerboard w/ matte blue & translucent green outer stripes & matte & clear yellow central checked stripe, signed "Shultz", circ. 7.75", Wd 1.25"; 2 w/ clear pink base & square insets, circ. 8", Wd 0.5", (unsigned); 2 w/ pale green marbled ground & multi-colored lozenges, circ. 8", Wd 0.375", (unsigned, yellowing at seams); 1 double checkerboard w/ translucent yellow base & compound squares, signed "Shultz", circ. 7.75", Wd 0.75", 1 double checkerboard stripe w/ clear pink & green squares, circ. 8", Wd 1", (unsigned); 1 w/ blue-green base & large lozenge motif, signed "Shultz", circ. 8", Wd 0.5"; 1 w/ bright green base & polka dot motif, circ. 7.75", Wd 0.375", (unsigned), (most w/ light scratches) all good-very good.



### 149: SEVEN BRUCE PANTTI BANGLES, AMERICA, MODERN

USD 300 - 500

All signed "Bruce Pantti": 1 peach to white ombré w/ purple dots, circ. 8", Wd 1.25"; 1 mint to white ombré w/ purple dots, circ. 8", Wd 1.25"; 1 marbled green w/ white dots, circ. 7.75", Wd 0.75"; 1 green w/ cream stripe, circ. 8", Wd 0.625", (discoloration around stripe); 1 yellow w/ wide lavender marbled dots, circ. 7.75", Wd 0.5", (discoloration); 1 imitation rose quartz w/ white dots, circ. 8", Wd 0.75"; 1 marbled red w/ wide cream dots, circ. 7.75", Wd 0.5", 1 yellow w/ wide grey marbled dots, circ. 7.75", Wd 0.5", (discoloration); 1 lavender w/ white dots, circ. 8", Wd 0.75", (discoloration); 1 marbled red w/ wide white dots, circ. 7.75", Wd 0.5", (dots discolored) all good-very good.

## ROMANCE SALE - VINTAGE FOR YOUR VALENTINE



### 150: EIGHT LEA STEIN BROOCHES, PARIS, 1960-MODERN

USD 300 - 500

All but 1 signed "Lea Stein, Paris": 3 Carolle Flower Lady pins: 1 w/ midnight purple cap & peach petal collar, 1.25"x2.5", (glue yellowing); 1 w/ pink cap & peach petal collar, 1.25"x2.5", (glue yellowing); 1 w/ magenta cap & petal collar, 1.25"x2.5"; 1 pin snakeskin flower w/ black mabé center, 2.75"x2.5", (unsigned); 2 full Collarette Art Deco Lady brooches: 1 w/ red & candy striped ruff, 2.25"x2.25"; 1 w/ white & salmon ruff, 2.25"x2.25", (face slightly askew); 3 Potted Flower pins, all w/ fuchsia or purple snakeskin pots: 1 w/ red & blue flowers, 1.75"x2.25", (white spot stains to back); 1 w/ green & purple flowers, 1.75"x2.25", (glue yellowing); 1 w/ pink & striped flowers, 1.75"x2.25", (most pieces w/ light scratches) all good-very good.



### 151: SEVEN LEA STEIN BROOCHES, PARIS, 1960-MODERN

USD 300 - 500

All but 1 signed "Lea Stein, Paris": 1 pastel rainbow Famous Renard Fox, 2.25" x 4"; 1 red & silver bow, 2.75" x 1.5" x 1", (unsigned); 1 mauve bow, 3" x 1.75"; 2 Art Deco Cicadas: 1 pastel, 1.5" x 3.5" & 1 red & black cicada, 1.5"x3.5", (glue yellowing); 1 full Collarette Art Deco Lady brooches, 2.25" x 2.25"; 2 Gomina the Sleeping Cat brooches: 1 black, pink & green cat, 3" x 2" & 1 multicolored cat w/ ribbon stripes, 3" x 2", (most pieces w/ light scratches) all good-very good.



### 152: GENEROUS LOT PAVONE GALALITH JEWELRY, PARIS, MODERN

USD 300 - 500

All but 1 bracelet signed "Pavone": 1 purple & black winged insect brooch, 2" x 6"; 1 green & black winged insect brooch, 2.25" x 5.5"; 1 periwinkle cat bracelet, circ. 6.75"-13", Wd 2", (unsigned, fade spots on cat's ear); 1 hot pink cat bracelet, circ. 7"-11.5", Wd 2"; 1 purple cat pin w/ zigzag standing tail, 1.5" x 4.25", (slightly warped); 1 leopard print cat on ombre blue skyline, 2.25" x 2.25"; 1 black cat on ombre blue skyline, 2.5" x 2.25"; 1 red cat w/ black mustache, 3" x 2.25; 1 pair black & white clip-on cat earrings, (most pieces w/ light scratches) all good-excellent.



### 153: CELLULOID CHERRY DEMI PARURE, EARLY-MID 20TH C

USD 300 - 500

Set c/o necklace, earrings & bracelet in cherry motif w/ paired carved leaves: 1 cherry necklace, circ. 20", (paint on leaves lightly worn, light scratches); 1 cherry bracelet, circ. 8.25", (cherry stem coating worn & cracking, paint chipping on links); 1 pair clip-on cherry earrings, 1.75" x 2.25", (paint on leaves lightly worn); 1 bow brooch, 2.75" x 1" x 1", (pin missing); 1 heart brooch, 2.25" x 4", (lightly scratched); 1 necklace w/ red & bottle green apples & leaves, circ. 18.5", (paint worn on white chain links) all fair-good.



### 154: HAND EMBROIDERED UNPICKED COAT, LATE 1930s

USD 300 - 500

Celestial embroidered coat of cream wool broadcloth w/ Saturn, stars, crescents & clouds embroidered w/ prong set paste rhinestones, silvered bugle & seed beads, chatoyant short bugle beads, appliquéd heavy wool yarn encircled w/ silvered bugle beads, 1, Wd 15.5"-35", L 51"; 1, Wd 21"-54", L 53", (bead loss, small moth holes); 1, Wd 18"-33", L 55", textile in very good condition.



### 155: ELEVEN LENGTHS FILET LACE YARDAGE, 1900-1930

USD 300 - 500

All cotton fillet lace w/ woven floral, butterfly & Grecian motifs: 1 w/ grapevines & curlicue edging, Wd 6.25-7", L 4 yds + yds; 1 floral w/ scalloped edge, Wd 6.25-7.75", L 4+ yds; 1 loop w/ curlicues, Wd 5.25", L 5.75", circ. 90"; 2 w/ grapes & butterflies, 1 Wd 5.75", L 10+ yds & 1 Wd 5.75", L 10+ yds; 3 w/ reversible tulip pattern, 1 Wd 5.25", L 14+ yds, 1 Wd 5.25", L 10+ yds, (1.5"x2" piece of muslin stitched to 1 end), 1 Wd 5.5", L 9+ yds; 2 loops & 2 short strips of wide fillet, Wd 12.5-15", L 11" & 10.5", circumferences 79" & 82", (discoloration); 1 grapevine w/ curlicue edge, Wd 8.5-9.5", L 10+ yds; 1 w/ butterflies & florals, Wd 4.5", L 10+ yds, (most w/ light stains & raw ends) all very good-fair.

## ROMANCE SALE - VINTAGE FOR YOUR VALENTINE



### 156: WEDDING LACE YARDAGE, 1950s

USD 300 - 500

1 white w/ tulip & silver trim, label "Dentelles de Calais, Made in France", Wd 4.25", L 34+ yds, (cut in 3) & 1 unlabeled & same, Wd 4.25", L 13+ yds; 2 lengths w/ sparkly white weave: 1 Wd 12", L 4+ yds, (1" x 4" swatch cut from 1 corner, yellow stains 1 edge), 1 Wd 12.25", L 61.5", (1 end cut diagonally); 1 w/ applied satin ribbon, flowers & ruffles, Wd 35", L 74", (large swatch cut from corner w/ 19" strip remaining); 1 floral motif, Wd 11.5", L 32", (1 repeat cutout to 1 end, few light stains); 1 stretchy w/ florals on net, Wd 18", L 63", (fraying to edges); 1 net w/ applied twill tape florals & loops, Wd 36.5", L 85.5", (dirty, few tiny holes, edge cut); 1 ivory leaves & swirls w/ scalloped edge, Wd 36", L 4+ yds, (stains to 1 edge) all fair-good.



### 157: BLUE LEAVERS LACE YARDAGE, FRANCE, EARLY 1950s

USD 300 - 500

1 metallic multicolored floral brocade on turquoise silk & rayon ground, label "Dentelle de Calais", Wd 37", L 4+ yds; All navy rayon, cotton or silk blends: 3 lengths navy, 1 Wd 21.75", L 4+ yds, 1 Wd 21.75", L 40", 1 Wd 22", L 4+ yds; 1 navy, Wd 11.25+ 2+ yds; 2 navy w/ scallop edge, 1 Wd 15", L 3+ yds, (2.75" cut edge, 2.5" & 2" holes 1 end), 1 Wd 17", L 5+ yds; 1 w/ ultramarine undertones, Wd 19", L 3+ yds, (1" hole); 1 w/ scallop floral edge, Wd 11.25", total L 8+ yds, (cut in 2); 1 wide navy, Wd 36", L 3+ yds, (few light stains); 1 dark navy, label "James V. McConnell, Made in France", cut in 3, Wd 15.5", total L 15+ yds; 2 lighter blue, Wd 25.5"&7.5-18", L 10+ yds, (cut in 2) (some w/ holes or swatches cut at ends) all fair-very good.



### 158: MID CENTURY LACE YARDAGE, 1950s

USD 300 - 500

2 mechanized buratto inspired by 16th C Venetian household textiles, Italian: 1 w/ yellow fountains & cherubs, Wd 7.5"-16.5", L 10+ yds, (raw ends) very good; 1 w/ peacocks & shrubs, Wd 10"-12", L 17+ yds, (raw ends, some pulls throughout) good; 1 yellow leavers lace yardage, Wd 39", L 4+ yds, (1 end cut unevenly for 51") good; 1 brown lace w/ corded outline, Wd 38.5", L 7+ yds, very good.



### 159: RAFFIA & HORSEHAIR MILLINERY BRAID YARDAGE, 1950-1960s

USD 300 - 500

1 horsehair weave w/ raffia chenille stripes, Switzerland, Wd 2.5", L 24 yds; 1 black & brown treated raffia braid, Italy, Wd 2", L 9+ yds, (lightly dirty, ends unraveling); 1 raffia braid of matte 4-strand braid raffia & celluloid strips, Wd 1.75", L 10+ yds; 2 lengths of horsehair weave w/ wavy fringed raffia, Switzerland, 1, Wd 1.75", L 21+ yds, (separating for 8" at 1 end, ribbon crumpled), 1, Wd 1.5", L 24+ yds, (cut in 3 pieces, crumpled); 1 raffia woven into 'ruffled-wave', Switzerland, Wd 0.75", L 23+ yds, (ends fraying) all very good-excellent.



### 160: RAFFIA & HORSEHAIR MILLINERY BRAID YARDAGE, 1950-1960s

USD 300 - 500

1 raffia & horsehair ribbon, Wd 1.75", L 20+ yds, (ends fraying); 1 raffia horsehair bias windowpane weave, Wd 2.75", L 3 yds, (1" hole & broken weave to 1 end, ends fraying); 1 horsehair w/ diamond lace pattern, Wd 2", L 81", (ends fraying); 1 lacquered raffia looped, "Made in Switzerland", Wd 1.25", L 22+ yds; 1 bias woven checkerboard ribbon of black raffia, Wd 3.25", L 13+ yds; 1 braided & woven raffia ribbon, "Made in Switzerland", Wd 2.25", L 10+ yds, (dirty, light fraying); 1 horsehair & raffia w/ wide zig-zag pattern, "Made in Switzerland", Wd 5.25", L 9+ yds, (ends fraying); 1 bias woven horsehair ribbon, Wd 3", L 7+ yds, (spot stains, repeating along edge) all good-excellent.



### 161: NINE LENGTHS BLACK LACE TRIM & APPLIQUE, LATE 19TH- MID

USD 300 - 500

9 pcs black lace yardage, Wd range, 1.5"-14.75", L range 42"-19+yds: 1 loose weave net trim w/ embroidered florals, France, (cut in 3 pieces, raw edges); 1 black lace appliqué w/ white backing, (stains & holes to backing, lace detaching); 1 chiffon w/ 2 satin stripes & embroidered leaves, China, (2 pieces); 1 embroidered chiffon w/ eyelet flowers at edge, (0.5" hole right edge, 2"x0.5" swatch cut); 1 silk w/ net florals in alternating scallops, England, (raw edges, tiny-0.25" holes in net); 1 net w/ satin embroidery, dots & scallops, France, (cut in 2, raw edges); 1 w/ grouped dots, France, (cut in 4, raw edges); 1 net w/ embroidered laurels, France, (raw edges); 1 straight-edged floral & geometric lace, France, (cut in 2) all fair-very good.



## ROMANCE SALE - VINTAGE FOR YOUR VALENTINE



### 162: TWELVE LENGTHS BLACK LACE TRIMS, FRANCE, MID 20TH C

USD 300 - 500

Some made in France: 1 trim w/ leaves, buds & dots, Wd 2", L 82.25"; 1 w/ scalloped edge & floral corners, Wd 3"-5", L 2+ yds; 1 in wide chevron shape, cut in 3, Wd 3.5", total L 3+ yds; 1 black floral trim, cut in 2 strips, Wd 1.5", total L 12+ yds, (spot stains); 1 w/ scalloped edge w/ florals & dots, cut in 2, Wd 2.75", total L 23+ yds; 1 floral center panel & edge, cut in 4, Wd 1.25", total L 37+ yds; 1 wide floral band w/ leaves, cut in 2, Wd 2.75", total 22+ yds; 1 loose net w/ flowers forming scalloped edge, Wd 2", L 2+ yds, (holes); 1 concentric circle, Wd 1.25", L 39"; 1 black w/ roses, cut in 3, Wd 1.75", total L 27+ yds; 1 twisting floral, Wd 1.25-2.25", L 2+ yds; 1 w/ helix pattern, Wd 2.5", L 2+ yds, (most w/ fraying) all fair-very good.



### 163: GENEROUS MALTESE BOBBIN & IRISH CROCHET LACE, LATE 19TH

USD 300 - 600

15 pcs, all Wd 0.5"- 3.25", L 42"- 6 yards, including: 1 wide w/ floral scalloped edge, cut in 2, Wd 3.25", total L 54.25", (fraying); 1 floral lattice pattern, Wd 2", L 6 yds; 1 Maltese cross & grouped florals, Wd 3.25", L 5+ yds, (fraying); 1 Maltese cross & leaves in X shape, Wd 3.25", L 2+ yds, (pulls to edges); 1 lappet w/ Maltese crosses & flowers in diamond pattern, Wd 2", L 42.75"; 1 w/ flowers in lattice pattern, Wd 2", L 6+ yds, all fair-very good.



### 164: BRUSSELS APPLIQUÉ LACE & POINT D'ANGLETERRE, 19TH C

USD 300 - 600

22 lengths: 1 wide net ribbon w/ flower motif, Wd 5.25", L 5+ yds, (cut in 8, stained, edges raw); 1 w/ looped leaves around ovals, "M.E. Feld Company, Made in France", Wd 2.25", L 8+ yds, (tiny-0.25" holes); 1 net w/ twisted vines, Wd 1.75", L 3+ yds, (1.5" hole 1 end, light stains); 1 w/ florals & applied swags, Wd 3.5", L 43", (cut in 2); 1 net w/ daisies, Wd 4", L 2+ yds, (discoloration); 1 net ribbon w/ flowers, Wd 3", L 69" & 73", (cut in 2, tiny spot stains & holes, ends raw); 1 smooth edged net w/ daisies, "M.E. Feld Company, Made in France", Wd 1.75", L 121", (ends raw); 12 shorter lengths, (most w/ discoloration &/or spot stains) all fair-good.



### 165: EIGHT LACE FLOUNCE YARDAGE, 1840-1900

USD 300 - 600

All Wd 3.5"- 15", L 71.5"- 6+ yards: 4 Schifflí embroidered net, including: 1 w/ embroidered buttonholes, Wd 5", L 6+ yds, (edges raw, discoloration) & 1 w/ large flower & leaves, Wd 3.5", L 4+ yds, (tiny spot stains, edges raw); 3 Brussels appliqué including: 1 off-white net w/ applied flowers at edge & center, Wd 13.5", L 71.5", (spot stains, tiny-1" repairs, edges raw); 1 silk net hand embroidered w/ running thread work in maple leaf motif, 1840s, Wd 15", L 5+ yds, (cut in 2, cut edge raw); 1 chainstitch embroidered net; all fair-very good.



### 166: TWO LARGE CHANTILLY LACE FLOUNCE YARDAGE, MID 19TH C

USD 400 - 600

Both of brown & black silk: 1 w/ all over floral grid & broad border in various crenelated Greek motifs, Wd 46", L 3+ yds, (raw ends, 0.25" hole in 1 edge near end) very good; 1 w/ leave stalks & berries clusters & bordered w/ pine bough motif & clusters cones, mid 19th C, Wd 58", L 4+ yds, (raw end, tiny-0.25" holes in net) good.



### 167: BRUSSELS MIXED LACE & BRUSSELS APPLIQUE FLOUNCE

USD 400 - 600

1 Brussels mixed lace yardage, Wd 12.5", L 7+ yds, (scattered tiny spot stains); 1 Brussels bobbin lace appliqué w/ needlework fillings, Wd 16", L 5+ yds, 1850-1890, (raw ends, tiny-0.25" holes & repairs, 4" repair near 1 end) both good-very good.



### 168: EMBROIDERED & LACE HOUSEHOLD & PERSONAL TEXTILES

USD 300 - 500

1860-1920s: 1 embroidered filet w/ fine silk ruffle, 18" x 8", (edge fraying); 1 semi-circular head covering net w/ appliqué dots & vines, 1860s, 20" x 11", (discoloration, few tiny holes); 1 white crocheted bodice front, 15.5" x 15.5", (edges fraying); 1 ecru needle lace panel w/ center seam, Italian, 21.5" x 18.5", (seam uneven, pulls); 1 rectangle w/ chemical lace, 14.5" x 33"; 1 net w/ tape lace edging, 26"x26", (broken brides, 0.25" stain center); 1 oblong linen panel w/ tape lace edge, 24.5" x 42", (light spot stains to center); 1 oval w/ princess lace applied flower edges, 30.5" x 40"; 1 tan embroidered w/ fronds & circles, 13" x 14", (0.25"-1.25" holes, edges raw); 1 sham w/ bobbin lace, white & drawn work embroidered inserts, 26" x 33.5", (few tiny stains) all good- very good



## ROMANCE SALE - VINTAGE FOR YOUR VALENTINE



### 169: ASSORTED HOUSEHOLD TEXTILES, 1890-1920s

USD 300 - 500

3 pillow covers: 1 princess lace appliqué, Wd 27", L 30.5" (modern backing); 1 net w/ whitework embroidery, drawn thread work & needle lace, Wd 33.5", L 36.5" & 1 striped cotton w/ ruffles, Wd 10", L 17"; 1 chiffon w/ appliqué lace edge, Wd 20.75", L 49", (stains, edges fraying); 1 tape lace, net appliqué & ribbon insertion, Wd 22", L 36.5", (backing damaged, ribbon & edge raw); 1 applied tape & bobbin lace flounce, Wd 19.5", L 40", (1 edge unfinished); 1 net w/ applied tape lace, oval center, Wd 14.5", L 26.5", (holes in net, seams separating); 1 tape & needle lace roundel, 1890, 17.5"x17.5", (2 stains); 1 Brussels appliqué, Wd 9", L 18.5"; 1 oval net dresser scarf w/ embroidery & chemical lace, Wd 16", L 45" (2 repairs to 1 end) all fair-very good.



### 170: TABLE LINENS & HOUSEHOLD TEXTILES, 1920-1970s

USD 300 - 500

Set of 4 placemat w/ napkins & matching rectangular mat in tape & needle lace w/ Tenerife insertions: placemats 20.5" x 16.5", napkins 7" x 7", (fraying); 1 placemat & napkin set, tan w/ 3 rows knotted edging: placemats 19.75" x 16.5", napkins 7" x 7"; 1 set 12 embroidered filet lace placemats, 1920s, 16.5" x 11", (discoloration); 1 set 11 linen & drawn thread work oval placemats w/ "ERS" monogram, 17.75" x 11.5", (fraying); set 4 Pina fiber placemats w/ white embroidery & drawn threadwork, 17" x 11", (tiny holes); matching white embroidered squares, 12"x11.25" & 9.75" x 9.75", (light stains); 1 set yellow linen & Brussels tape lace, 1970s: 12 napkins, 13" x 13.5", placemats, 17" x 11" (1 damaged) table runner 27" x 13"; 16 assorted; all good-excellent.



### 171: LARGE TAPE LACE PATTERNS, c. 1900

USD 300 - 500

All w/ pre-stamped design & material specifications, most Battenburg: 1 w/ pair heart motif & St. George cross, on grey paper, 20" x 20", (tears & stains to paper); 1 octagonal w/ architectural motif, on pale pink, 30.5" x 31", (fraying edges, light staining); 1 triangular corner insertion for table linen w/ tenerife embroidered medallions, cream, 27.5" x 25.5", (stain, small holes, fraying edges); 1 square w/ large scale florals on cream backing, 36.5" x 41.5", (stains, fraying edges); 1 square w/ finished tape lace wreath border, brides & fillings incomplete, on pink cotton, 36" x 35", (stains, fraying edges, small holes); 1 circular in ionic scroll & foliate motif, unfinished, on pink, 46.5" x 45", (paper flaking, staining, holes) all fair-good.



### 172: BED HANGING & COVERING, ITALY, LATE 19th - EARLY 20th C

USD 300 - 500

1 Fili Tirati bed curtain w/ drawn work in mythological beast motifs arranged in both vertical & horizontal w/ fringe to three sides, Mediterranean, 127" x 38", (light spot stains throughout) good; 1 bed covering of ivory complex plaid damask w/ mm lace insertions & edging, late 19th-early 20th C, 64.5" x 74.5", (light staining throughout) good.



### 173: TWO ALTAR FRONTALS, 19TH C

USD 300 - 500

1 floral embroidered eyelet net & cotton, 1840-1850, 105.5" x 34.5", (staining); 1 Milanese bobbin lace w/ drawn thread work border, 19th C, 98.5" x 38.5", (1 large 4" x 2.5" stain, many smaller & lighter stains) both good.



### 174: GENEROUS LOT OF BABY CAPS & UNDER GARMENTS, EARLY 19TH

USD 300 - 500

All cotton, some w/ bobbin lace edgings: 12 fine mull & dimity bonnets, size range, depth 5"-7", height 4.5"-6.5": 1 net, (tiny holes); 1 check, (lace coming undone, fraying ties); 1 checked, (lace torn in several places); 13 child's corset covers, all cotton some w/ lace trim: 19.5"-29", L 6.5"-9.5"; 2 baby petticoats: 1 w/ looped edging, CH 19", L 5-14.5", (spot stains, drawstrings fraying, missing CB button); 1, CH 20.5", L 21.5", (spot stains) all good-very good.

## ROMANCE SALE - VINTAGE FOR YOUR VALENTINE



### 175: FOUR POINT DE GAZE LACE ACCESSORIES, 1860-1880s

USD 400 - 600

2 collars: 1 small collar w/ pointed tips, 13.5" x 11.25", (tiny-0.25" holes in net) & 1 small collar w/ rounded ends, 11.75" x 8.75", (tiny holes); 2 lappets: 1 wider "U" shaped, 23.5" x 16", (1 tiny hole in net near center); 1 narrower "U" shaped collar, 14" x 15.25", (light fraying at edges) all good-very good.



### 176: THREE BLACK LACE LAPPET ACCESSORIES, 1860-1870s

USD 300 - 500

All Heathcoat: 1 triple lappet w/ floral crown piece, leaf & bud motifs w/ openwork scrolls, 11.5" x 22.25", (0.25" patch worn on leaf); 1 lappet w/ large radiating floral headpiece, 7.5" x 50", (two 0.5" wear holes in center panel at edge, tiny-0.25" holes throughout); 1 SH lappet w/ floral spires, 4.25" x 44.75", (light fraying) good-very good.



### 177: GENEROUS LOT OF FINE IRISH CROCHET CUFFS, 1850-1870s

USD 400 - 600

23 pairs all WD 2 1/2"-4.75", L 7"-12.5", all in good-excellent condition unless specified: 1 crocheted w/ flowers, 1.25"-2.75" x 9", (0.5" & 0.25" holes in 1 cuff); 1 crocheted w/ fern motif, 2.5" x 9.75"; 1 crocheted w/ grid like base, 2.75" x 12.5", (spot stains 1 edge); 1 crocheted short & wide w/ bauble edges, 4.75" x 7"; 1 collar, (staining & tears at inner edge); t/w pair of tape lace insertions & 1 single cuff; all good-excellent.



### 178: SIX NET PELERINES, SHAWLS & COLLARS, 1820-1850

USD 400 - 600

1 Broderie Anglaise net w/ embroidered leaves & eyelets, c. 1850, 67.5" x 19", (light fraying); 1 Tambour embroidered net, 1830s, 42" x 20", (tiny holes); 1 Carrickmacross net w/ applied leaves & ruffled trim, 1840s, 22" x 26", (0.25" repair near center, tiny holes, light fraying to edges); 1 bobbin appliqué, 1820-1840s, 32" x 28.5", (tiny spot stains); 1 w/ appliqué cording, 1830s, 25" x 17", (tiny-0.25" holes); 1 Carrickmacross, 1830s, 29" x 21.25", (tiny-0.25" holes, 0.75" repair right side) all good-very good.



### 179: THREE TUSSAH SILK MALTESE LACE COLLARS, MID-LATE 19TH C

USD 300 - 600

1 w/ stylized Maltese cross medallions & ground, 1860s, 29" x 26.5"; 1 w/ Greek festoon motifs, late 19th C, 33.5" x 25.5", (1" section of broken brides 1 edge & 1.25" tear b/t body & edging); 1 w/ all over Maltese cross & floral medallions, 1870s, 24" x 30.5", all good-very good.



### 180: BOLERO & DOLMAN STYLE CAPELETS, 1880s

USD 300 - 500

1 black voided velvet edged in Jet beading & beaded net SH & w/ faceted triangular drops & fringe, SH-SH 18", L 24.5", (bead loss, beginnings of bead disease, top eye detaching, W tie worn); 1 French jet bolero w/ beaded net ground & dimensional bugle bead medallions, B 36", L 15.5", (bead loss, start of bead disease, 7" right of CF & 5" left CF seam opening b/t collar & body); 1 black cotton & silk lace capelet w/ French jet wheat motif beaded appliques, SH-SH 17", L 29", (bead loss & disease in fringe); 1 black cisele velvet re-fabricated halter top w/ bead & chenille trim, originally 1880s, B 34", L 18", (edges shattering, small areas of wear, bead loss); t/w 1 modern fab of 1880-1920s black & gold lace, Wd 10", L 18", all good-fair.



### 181: TWO SILK CHINE LADIES STOLES, ENGLAND, 1820s

USD 300 - 500

Both warp printed & in fine condition: 1 Persian influenced rainbow shawl w/ bands of red, green, purple & blue to both ends in frame consisting of floral vines w/ red & yellow flowers, main ground taupe w/ meandering shamrock vines, double knotted self warp fringe, England, Wd 19", L 93.5", fringe 2.5", (tiny holes, many small stains, small tear to 1 corner) good; 1 ivory silk taffeta w/ pink & brown undulating abstract wave motif, fine silk variegated fringe, Wd 19", L 98", fringe 8", (fringe messy) excellent.

## ROMANCE SALE - VINTAGE FOR YOUR VALENTINE



**182: PAISLEY SHAWL, FRANCE, 1860-1870s**

USD 300 - 500

Wool & silk twill woven jacquard shawl w/ scarlet patterned center, densely patterned stylized boteh motifs, stylized borders & bands, silk self-warp fringe, French, 65" x 131", (small-1" paint stains near center, fringe worn, 4.5" repair to 1 edge, water stains to center) good.

---



**183: BLACK CANTON STYLE SHAWL, 1930**

USD 300 - 500

1 black silk ground w/ embroidered florals in red russet & yellow w/ buds, leaves & blue florets, long knotted fringe, probably European, 49.5" x 48.5" w/ 18" fringe, (pinholes near center, messy fringe) good-very good.

---

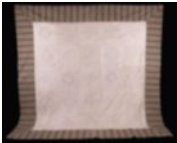


**184: CREAM SILK CHINESE EXPORT SHAWL, CHINA, 1930s**

USD 300 - 500

Reversible cream silk shawl w/ 4 quadrants embroidered w/ large stylized lotus in shades of red, lavender, pink & yellow, carnations, violets & fantasy florals, deep complex knotted fringe, 52" x 53.5" w/ 19" fringe, (messy fringe, pulls to embroidery, light spot stains & tiny holes throughout) good.

---



**185: HEAVILY EMBROIDERED & KUTCH MIRROR WORK BED COVERING**

USD 200 - 400

Heavy cotton printed & mitered bordered, elaborate Kutch mirror work & all over ivory silk embroidered geometric patterns in grid w/ diamonds, cotton duck backing, 98.5" x 96.5", India, 20th C, (tiny pulls, very small light spot stains) very good.

---



**186: THREE PHULKARI EMBROIDERED SHAWLS, INDIA**

USD 300 - 500

All silk floss hand embroidered on brick red cotton ground, mid 19th C-early 20th C: 1 w/ broad border in orange w/ purple strips, main ground of ivory diamonds w/ multicolor banded diamonds inserted at either side of center, 49.5" x 96.5", (spot stains, raw ends fraying) good; 1 entirely hand embroidered surface in yellow, orange, white & green w/ purple accents on brick red cotton ground, late 19th-early 20th C, 55.7" x 101.5", (raw end, dirty) good; 1 embroidered w/ white & yellow flowers w/ blue & green highlights on brick red cotton ground, 19th C, 61" x 103", (large stain center, discoloration, embroidery worn, cut edges fraying, extensive repairs 1 edge along w/ 3" tear) fair.

---



**187: SILVER EMBROIDERED SARAFAN STYLE GOWN, EARLY 19TH C**

USD 400 - 800

Moss green silk velvet empire W sleeveless gown, heavily European embroidery w/ stylized sheaves of grain & broken leaf border motif, silver paillettes, metallic strips plain & embossed to either side of CF, bodice front & back & at hem, embroidered galloon at either side of CF, hem & on SH straps, back lacing w/ boning, B 31", W 25", L 57", early 19th C, (no lacing, metal embroidery fraying, discoloration & spot stains, missing & loose paillettes, CF seam opening b/t velvet & metal ribbon, missing trim at armholes, 8" tear at base of CB opening, 1.5" & 0.5" holes CB, altered at CF w/ metallic galloon as later addition- partially detached & included) poor.

---



**188: TWO WOOL RUGS, TURKMENISTAN, LATE 19TH- EARLY 20TH C**

USD 200 - 400

Both w/ inlaid patterns: 1 wool rug w/ geometric diamond & zig-zag patterns & fine undyed warp fringe, Turkmenistan, 29" x 26.5", (0.5" of binding missing at center of 1 edge, 0.5" of missing fringe 1 edge); 1 Caucasian woolen rug in elaborate stripes w/ varied geometric & floral designs, Turkmenistan, 28" x 32", (small chunks of fringe missing, wear to edges) both good.

---

## ROMANCE SALE - VINTAGE FOR YOUR VALENTINE



### 189: TWO WOOL SHAWLS, N. AFGHANISTAN & TURKMENISTAN, EARLY

USD 200 - 400

1 warp pattern striped woven in shades of red, green, indigo & saffron, 7 panels each 11" wide, Northern Afghanistan, 71" x 78.5", (edges fraying in spots, wear spots throughout, many small seam openings, "99" inking at 1 corner) fair-good; 1 warp woven w/ geometric patterns & stripes in shades of red, green white & indigo, 2 panels each 9" wide, Turkmenistan, 18" x 77.5", (holes throughout, wear to edges, fading/soiling throughout) fair.



### 190: THREE TRADITIONAL EMBROIDERED TOPS, 19TH C.

USD 200 - 400

1 Sindhi embroidery handmade cotton choli of multicolored pieced embroidered bands in shades of indigo, orange & red w/ elaborate mirrored inserts & cut & appliqued undyed cotton borders, mid 20th C, open back, L 25.5", (mirrors damaged, light discolorations, unfinished CB edges) good; 1 Banjara embroidered handmade choli of crimson cotton w/ forest green & curry colored cotton edgings & inserts & mirrored inserts, 19th C, open back, L 18.5", (mirrors damaged, back ties untwisting), very good; 1 child's intricately hand embroidered waistcoat w/ rows of multicolored beads, lined in red floral printed silk, Kohistan, early 20th C, CH 24.5", L 14", (plastic buttons added, bead loss top back stripe) very good-excellent.



### 191: THREE RABARI EMBROIDERED CHOLI, NORTHWEST INDIA

USD 200 - 400

Early-mid 20th C: 1 green, red, aqua & blue cotton w/ hand embroidery in shades of yellow, red & white to B and sleeves, B 32", L 11", (tie N/I, spot stains throughout) good; 1 red, violet & blue cotton w/ hand embroidery in shades of yellow, white, red, blue & green to bodice & sleeves, B 36", L 10.5", (tie N/I, spot stains to front) good; 1 red & blue cotton w/ hand embroidery to sleeves in shades of saffron, green, pink & blue, 1 single inset mirror to left SH, early 20th C, B 33", L 11.5", (tie N/I, light staining throughout) good.



### 192: HOUSEHOLD & PERSONAL TEXTILES, INDIA, 19TH & EARLY 20TH

USD 200 - 400

1 red, green & yellow resist dyed Bandhani Dupatta Khatri w/ geometric bullion, stamped paillettes & flat metallic highlights embroidered over linear & spotted design, Gujarat, early 1900s, 75" x 48", (small holes, dark spot stains); 2 red Bandhani turbans, Rajasthan, 5.5" x 5+ yds & 8" x 5+ yds, (spot stains, tiny holes); 1 red embroidered Patti Kutch, 3"x60", (fraying, spot stains); 2 bead embroidered "M" shaped toran, Gujarat; 1 embroidered Kutch, maroon w/ 3 circles, 7.75" x 18", (fraying); 1 dark purple embroidered Rabari Patti, 5.5" x 55.5", (fraying, embroidery unfinished); 1 Gujarat embroidered Chakla, 10.5" x 13.75", (damaged or missing paillettes/mirrors); 1 embroidered choli front, Balochistan, 1950s, 21"x14", (raw edges) all fair-good.



### 193: OTTOMAN EMBROIDERED VELVET VESTS, BODICE & JACKET

USD 400 - 600

19th C: 1 red silk velvet bodice w/ guipure silver metallic embroidery & silver floral paillettes, broad CF lacing, Turkish, B 30", L 17.5", (no laces, velvet worn, lamé tarnished); 1 red silk velvet w/ gold couched embroidery edged w/ metallic brass braid, Greek, B 33.5", L 15", (lamé detaching collar, 2" right SS opening, bauble stitches broken); 1 silk velvet embroidered in metallic chainstitch, garnet tone glass bead accents, edges & SHs w/ rows of metallic embroidery, label "L&H Nathan Costumes, 17 Conentry St. Piccadilly Circus London W", B 36", L 9-15", (right SH button missing); 1 plum silk velvet jacket encrusted w/ metallic embroidery in floral & wheat motif, B 36", L 18", (discoloration) ( all w/ stains/damaged lining, lame tarnish) all fair-good.



### 194: CLOUD COLLAR, CHINA, EARLY 20TH C

USD 300 - 500

Satin collar overlaid w/ stylized clouds of silk & shaped scalloped ribbons edged w/ green net & red silk tassels, embroidered in satin stitch w/ floral, fruit & butterflies motifs, SH button closure, L 15", (netting detached at back for 19", several small holes in green stripe along edge in back) good-very good.

## ROMANCE SALE - VINTAGE FOR YOUR VALENTINE



**195: TWO PAIRED MANDARIN SKIRTS, CHINA, LATE 19TH-EARLY 20TH**

USD 400 - 600

1 yellow CF & CB panels rendered entirely in Peking knot w/ architectural & dragon motifs over waves, blue & white ombre satin stitch embroidery in floral & butterfly motifs to borders, pleated section embroidered w/ butterflies & flowers, patterned gauze designs on plain woven silk ground, 1880s, W 45", L 38.5", (W band stains/ discolored & w/pulls, closures loose); 1 pink, CF & CB panels w/ gold enhance blue ombre Peking stitch temple & dragon motif bordered w/ multilayered silk ribbons framed w/ butterflies & birds, pleated sections w/ embroidered motifs, all embroidery on vertical bands & border rendered in satin stitch, c. 1900, W 44.5", L 38", (tiny moth holes, W band discolored, "Carrie D" inked in W band) both good-very good.



**196: LADIES EXPORT ROBE, CHINA, LATE 19TH C**

USD 400 - 600

Chinese embroidered silk robe w/ collar incorporated into SH panels, high side slits edged w/ elaborate shaped ribbon & paper covered silk scroll work, cherry blossoms, chrysanthemums & multicolored butterflies throughout, made for western market, B 45", L 51.5", (tiny-0.25" light spot stains SH blades, lining mostly removed, armscyes unfinished, 3.5" seam opening right SH seam) very good.



**197: JACKET & TUNIC OF MANDARIN SKIRTS, 19TH C**

USD 300 - 500

Both constructed from Mandarin skirts: 1 embroidered jacket w/ couched gold five claw dragon surrounded by auspicious symbols over wave & mountain motif entirely rendered in Peking knot embroidery, B 46", L 25.5", (pulls & wear to embroidery, lining shattered back of neck, satin stripes on sleeves worn & fraying, seam openings at back); 1 tunic created from inverted Mandarin skirt panels w/ peonies, wisteria & butterfly motifs on pale yellow patterned silk ground, B 35", L 30.5", (hem mostly unfinished, 9" seam openings each SS from hem, cream silk starting to tear at seam & heavy embroidery, 6" tear right underarm, embroidery worn) both fair-poor.



**198: MANS ROBE, CHINA, LATE 19TH C**

USD 300 - 500

Blue patterned silk edged w/ shaped ribbon & black silk satin appliqués w/ piped edge extending around collar, at CF & around hem, sleeve cuffs embroidered w/ gold thread, figures & flowers, cast brass button closures, B 54", L 36.75", (embroidery worn at cuffs, tiny-1" light spot stains, scattered tiny pulls to blue silk, lining stained) good.



**199: LADIES ROBE, CHINA, c. 1900**

USD 400 - 600

Seafoam patterned silk robe w/ satin stitch vases, florals & butterflies, CF opening, ivory cuffs embroidered w/ auspicious figures in satin & Peking knot, B 46", L 41", (bands of embroidery trim worn & fraying, sleeve altered, lining torn w/ tiny-0.5" holes along edge, 1 button replaced, embroidery trim shattering back hem, 1.25" stain CB hem) fair.



**200: FOUR EMBROIDERED & QUILTED MANS HATS, TURKMENISTAN**

USD 300 - 500

1 black, yellow & white embroidered, 19th C, circumference 18.5", (patches of grey staining); 1 green, black, red & white w/ piecework & corded quilting, early 20th C, circumference 18.25", height 6.5", (wear to very top of hat); 1 small black, white, yellow & purple embroidery, 20th C, circumference 15.5", height 3", (light wear to edges & lining); 1 w/ yellow & white flowers at crown, 19th C, circumference 18.25", height 2", (bands of fading & staining, black embroidery at crown fading), all good.



**201: DEADSTOCK ALAÏA FOR TATI ESPADRILLES, FRANCE, c. 1991**

USD 300 - 500

1 pair of woven hemp espadrilles w/ printed pattern in red, traditional stitched hem soles w/ applied rubber open sole for grip, c. 1991, inscribed with "Alaïa for Tati", L 9", Wd 3" Euro size 38, (light discoloration to heels & toes) very good.



## ROMANCE SALE - VINTAGE FOR YOUR VALENTINE



### 202: THREE PAIR CHARLES JOURDAN BOOTS, ITALY & FRANCE, 1980s

USD 300 - 500

All w/ original boxes: 1 pair oxblood pull on style w/ wrapped self-strap & buckle, label "Charles Jourdan, Paris, Made in France", L 10", Wd 3.5", Ht 16.5", size 9, (soles of heels gone, worn soles, minor scuffing) good; 1 pair camel w/ stacked heel & decorative chanel tie at CF, "Jourdan Design, Made in Italy", L 10", Wd 3.5", Ht 13.5", size 8.5, (scuffing, dark marks inside heel on right boot, fraying to ties, worn lining) good; 1 patent dark brown leather fitted knee height heeled boot w/ zip closure, label "Charles Jourdan, Paris, Made in France", L 10", Wd 3", Ht 19.5", size 9B, (creased leather, small tear at base of each heel, soles worn) very good. From the Collection of Karen Augusta.



### 203: GATORS AND GENTS UNCUT SLIPPERS, 1850 & 1870s

USD 300 - 500

1 pair of machine sewn camel colored gators w/ Buillion embroidery & dome brass buttons, lined in yellow cotton twill, 1870's, 7.5" x 19.5", (tarnish to buttons & trim, discoloration to leather, bullion shedding, 1 missing button) good-fair; 1 pair of green velvet uncut slipper uppers w/ finely worked multicolored seed beads in Native American floral style, 1850's, 4"-12.5" x 14.5", (glued to backing from 1921, fading) good.



### 204: FOUR MANS SHOE BUCKLES, ENGLAND, MID-LATE 18th C

USD 300 - 500

1 pair man's shoe buckles of leather & silver w/ functional closure, in paper cover wooden box, hallmarks of Lion & profile of George III, date mark "S", c. 1794, 3" x 2", (leather scuffed, tarnish, 1 side of box lid missing, box worn & scuffed) fair; 1 pair paste & pinchbeck w/ tabs, mid 18th C, 4" x 2", (tarnish, stones missing) fair; 1 pair clip-on gilt w/ leather center, England, late 18th C, 2.5" x 1.5", (minor scuffing & tarnish, back rusty) very good; 1 pair cut steel w/ leather center, spring back mechanism, 2.5" x 1.75", (leather scuffed, back rusty, tarnish) good.



### 205: THREE PIECE MANS BROWN SHADOW CHECK SUIT, AMERICA, 1900

USD 300 - 500

3-pc worsted wool & silk suit in shadow check c/o cuffless jacket w/ watch pocket, tab pockets, 4 button closure, CH 40", L 30.5", SH-SH 18", (lining worn, especially at underarms, snacks right SH), waistcoat w/ 4 buttons & 4 pockets CH 38.5", L 18.75"-23.5", (underarm stains & throughout lining, large light stains back of neck & SHs, tiny snacks front), un-cuffed trouser w/ horizontal CF pockets at W & CB buckle, buckle stamped "M. Byrne, NY", W 33.5", L 44.5", inseam 33", (buttons & buckles tarnished, minor wear spots & snacks throughout) good.



### 206: THREE PIECE MAN'S PLAID SUIT, AMERICA, c. 1900

USD 300 - 500

3-pc grey & tan plaid worsted wool & silk suit c/o cut away coat w/ side pocket & watch pocket w/ flaps on right H w/ 2-tone brown gingham button closure, cuffs & either side of CB vent, twill lining, CH 40", L 33.5", SH-SH 18", (wear spots & discoloration to lining, underarm wear), waistcoat w/ notched collar, 4 pockets, 1 key pocket lined w/ shammy cloth, CH 38", L 19.5"-23", (tiny wear spots to silk CB), cuffless trousers w/ side & back pockets, watch pocket & CB buckle, buttons stamped "M. Byrne, NY", loop for W closure reads, "Patented 1894", W 37", L 44.5", inseam 32.25", (tiny moth holes) very good.



### 207: MAN'S THREE PIECE BLACK SUIT, ZANESVILLE OHIO, c. 1906

USD 300 - 500

3-pc black wool & silk twill suit c/o box cut double breasted jacket w/ 6 buttons, 2 decorative buttons to sleeve, side pocket w/ flaps, left B pocket, label "L.H. Dennis & Sons, North 4th St. Zanesville, Ohio", made for Mr. P.P. Baughman, 4-13-1906, jacket CH 43", L 33", SH-SH 20.5", (2 mismatched buttons), waistcoat w/ 4 pockets & CB buckle CH 39", L 19.5"-25", (underarm stains to lining, snacks across SH blades), cuffless trouser w/ watch pocket, vertical SS pockets & horizontal piped back pockets, button fly, loop for W closure reads "Patented 1894", W 33", L 44", inseam 33.25", very good-excellent.

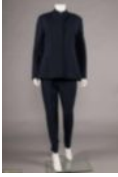
## ROMANCE SALE - VINTAGE FOR YOUR VALENTINE



### 208: MANS WWII LEATHER MOTORING OR AVIATION COAT

USD 300 - 500

Long leather outer coat, shammy cloth cuffs, buttonhole around collar & down CF to attach to underlayer, button at cuff stamped "Gem Co. Made in England" CH 48", L 44", (suede cuffs worn & dirty, wear esp. at cuffs, collar & hem) good.



### 209: WOMAN'S SKI SUIT, WEST GERMANY, C. 1968

USD 200 - 400

2-pc long semi-fitted jacket & pants that fit under heel in navy wool synthetic blend, labeled "Queiller, Western Germany", B 40", W 31", Ins 29" all the way to heel, Jkt W 36", L 28", excellent. Museum at FIT.



### 210: PRINTED SILK VOILE DAY DRESS, LATE 1840s

USD 300 - 500

Printed silk voile in chine inspired spot motif diagonal grid, front bodice gathered at SH into deep gathers at CF W, single embroidered button at CF neck, short cap sleeve w/ edged w/ box pleated frill, piped at neck, SH seam armcye & W, full skirt cartridge pleated to W band, fabric most likely French, 1840-1850, B 34", W 22", L 52", (silk shattering, button at collar worn, 0.75" repair left CF W, 1.75" tear CB W, 6" & 4" tears across SHs) fair-poor; t/w 1 blue corselet, c. 1870, B 30", L 6"-12.5". Museum of the City of New York.



### 211: CONVERTIBLE SKY BLUE GOWN W/ DAY & EVENING BODICES

USD 300 - 500

2 bodices, skirt & belt of aniline blue silk taffeta: day bodice w/ basket work buttons, pinked & scalloped double edged ruffles to neckline & cuffs, 1865-1867, B 36.5", W 29", L 13", (tiny holes around W band, three 0.5" spot stains CF, missing hooks & eyes at W, lace insert replaced); Swiss back lacing evening bodice w/ box pleated cap sleeves, B 31.5", W 24", L 12.5"-17", (fabric worn at CF & CB W points, shattering CB neckline, wear to cord casing, laces missing); full skirt w/ slight train, W 27", L 42-48.5", (missing CF W hook & eyes, stains & holes); self belt w/ bias trimmed edges, CF flat bow & wide CB wide bow w/ looped tails & scalloped, pinked edges, Wd 1.75", circ. 26", (CF bow detached) fair; t/w blue silk bolero, 1860s. Museum of the City of New York.



### 212: RENAISSANCE BEATRIX INSPIRED BAREGE GOWN, 1866-1867

USD 400 - 600

Figured barege trimmed in purple silk velvet ribbon w/ pleated standing ruff collar edged w/ velvet, yoke outlined w/ double ribbon band finished w/ velvet edged ruffle, graduated pleated & gathered sleeve puffs held w/ velvet ribbon bands, ruffle at outside sleeve seam, CF velvet covered wooden button closure, trained full skirt w/ multiple box pleats into W band front & back, hem trimmed in purple velvet ribbon, 1866-1867, B 34", W 24.5", L 52"-62", (wear to velvet, missing & detached buttons, hooks & eyes, 1" hole to ruffle CF B, 2", 1.5" 3.5" & 2.5" seam openings at W, tiny-0.25" wear holes across skirt) fair-good. Museum of the City of New York.



### 213: PINK LINEN DAY DRESS, 1855-1860

USD 300 - 500

Pink linen day dress w/ bodice front gathered into W, faux 1830s revival gigot sleeves, linen covered button button CF closure continuing down over CF skirt to hem, maple & scrolling leaf motif in white cotton soutache braid to CF skirt, cuffs & W band, 1855-1860, B 34", W 23", L 55.5", (stains throughout, 2 tiny, 1" & 1.75" period repairs to lap, 0.75" right underarm & 2 tiny CF around neck) fair; t/w 1 ruffled skirt, 1 skirt w/ ruching & 1 bodice, c. 1872. Museum of the City of New York.



### 214: FIGURED GAUZED DAY DRESS, 1850-1855

USD 400 - 600

1 grey-brown & white figured gauze dress in five lobed leaf, floral & bud motifs in dense horror vacui pattern, square neckline, cap short sleeve w/ detachable long bell sleeves, box pleated black gauze ribbon w/ white Van Dyke edging in rows to neckline, cap sleeve edge & in double row at cuff of bell sleeve, CB black silk thread covered button closure, full skirt knife pleated w/ cartridge pleats at CB, possibly half mourning, 1850-1855, B 33", W 22.5", L 51.5", (2" hole right underarm, shattering around hem) good; t/w white silk taffeta bodice. Museum of the City of New York.

## ROMANCE SALE - VINTAGE FOR YOUR VALENTINE



**215: IVORY SILK SATIN TRAINED BALL GOWN, c. 1868**

USD 400 - 600

Fitted evening bodice w/ deep pleated blush pink silk tulle at neckline gathered w/ multiple bias bands of cream silk satin edged w/ taffeta & black silk lace, flat panache bow to CF & left back SH, deep V corselet CF & CB, back lacing, crested sleeve w/ silk satin & taffeta puffs, deeply ruffled apron drape into gathered & puffed cascade train w/ pleated & gathered self trim, silk taffeta petticoat front w/ shaped graduated ruffle under apron & 2 tiered ruffle at lower edge, B 32", W 20", L 13-18", skirt W 20", L 41-64", (0.5" stain left underarm, trim at sleeves detaching, stain cluster right SH hidden by trim, lining stained, scattered light spot stains to skirt & large area of water stains left side, tiny pulls) good. Museum of the City of New York.



**216: FOUR PIECE PINK SILK TAFFETA BALL GOWN, c. 1872**

USD 400 - 600

Bubblegum pink 4-pc gown c/o bodice, belt, over skirt & trained full skirt, bodice w/ square neckline, white silk covered & needle embroidered CF button closure, engageante sleeve cuff, polonaise overskirt w/ apron front & in rows above skirt hem, all edge w/ double box pleated pinked edging, belt w/ puffed & tiered bow to CB, 18th C revival, B 33", W 21.5", L 16.5", skirt W 22", L 39-52", overskirt W 23", L 18-32.5", belt W 23.25", L 1.75-16", (3-4" repairs each underarm, bottom CF button missing, 1.5" repair right sleeve & 0.75" left sleeve, trim fraying, fading at SHs, shattering left sleeve, hem worn & torn, trim fraying, tiny hole right H, two 0.75" stains w/ holes CB overskirt & fading, belt tails fraying & missing hooks at W) fair-poor. Museum of the City of New York.



**217: CREAM & COCOA SILK TAFFETA GOWN, c. 1870**

USD 400 - 800

Directoire military inspired bodice w/ double contrasting never collar w/ CF opening set in dickie w/ 5 star embroidered buttons, self bow CF B, military shaped sleeve in contrasting ladder bands w/ complex pleated cuff, double corded edged peplum extended into pleated & shaped back tabs, contrasting flat cascading tabs from CB neck, cream silk taffeta skirt w/ horizontal bands of pleated ruffles extending across bustle & to front of skirt, B 38", W 22", L 20"-25.5", skirt W 24", L 42.5"-47", (1 band of sleeve trim missing & included, taffeta & trim detaching left cuff, small tears & seams pulling at bodice W, skirt W w/ 2.25", 0.75" & 0.5" stains CF, 1.5" opening left skirt W, drawstring CB broken & casing shattering) good. Museum of the City of New York.



**218: DOLMAN STYLE BEADED CREAM CAPE, 1865**

USD 400 - 600

Cream wool twill cape embroidered w/ cream silk cording & heavily beaded w/ white seed beads in elongated palmette motifs, double satin button w/ corded & beaded scalloped pickadils at neckline, elaborate needle embroidered clasp to CF neck, corded fringe w/ white glass seed beads at randomized intervals to CF opening, sleeves & hem, c. 1865, SH-SH 17.25", L 37.5"-43", (2 tiny moth holes SH blades & 1 left CB, 0.25" snack CB & left B, tiny dark stain CB, missing fringe at 1 scallop right CB) very good. Museum of the City of New York.



**219: PLAID AT HOME WRAPPER & BROWN OVERDRESS, c. 1870**

USD 300 - 500

Ladies at home wool wrapper in black & white plaid stripe on red ground trimmed in black wool braid at neck, CF opening, cuffs, back peplum & hem, CF black composite button closure, B 37.5", L 52"-61.5", (moth holes throughout, 2" & 1" stains to lap, several 0.5"-1" stains in B, alter at CB) fair; 1 overdress of brown striped & mottled cotton w/ bias edged rounded crenelated standing collar, cuffs & lower edge, CF waffle textured black button closures, 1868-1870, B 26", L 42.5"-46.75", (rusted buttons, 0.5" & 3 tiny spot stains B, 0.5" & 0.25" stains right H) good. Museum of the City of New York.



**220: CELADON SILK FAILLE & LISERE EVENING GOWN, 1880s**

USD 400 - 600

Fitted bodice & princess line split skirt of lisere in entwined floral brocaded silk galloon motifs w/ deeply tucked blonde lace overlay to bodice front, neckline & engageante cuffs, extended celadon silk faille long sleeved over bodice to train, gold silk satin petticoat w/ double ruffle at hem extending under crenelated & looped tabs, c. 1877, B 32.5", W 23.5", L 55"-76", (shattering throughout green faille, light stains CB W, lining shattering) fair; t/w brown taffeta w/ net & chenille, B 41", L 20", (tacks holding up trim undone)

## ROMANCE SALE - VINTAGE FOR YOUR VALENTINE



**221: SILK TAFFETA GOWN W/ DAY & EVENING BODICES, c. 1878**

USD 400 - 600

3-pc c/o fitted corsage day bodice w/ bands of blue & ivory silk, piping & inset ruffles from neckline extending to W, CF silk covered thread embroidered button closure, extended square peplum, ivory silk sleeves w/ box pleated cuff, double bow panache at elbow, deep pleated princess line bustled & trained skirt edged w/ ruffle ivory silk over deep under ruffle w/ ivory silk accents, fringed vertical swags from W to side train & Swiss evening bodice, day bodice B 35.5", W 22.5", L 15-23", evening bodice, B 36", W 23.5", L 11-17.75", Skirt W 22", L 39.5-57", (buttons missing & pulls to bodice, 0.2 stain CB, casing on laces detach, skirt w/ trim detached, tiny-3.5" stains) bodices good skirt fair; t/w repro 1870s jacket, B 40", L 29", Museum of the City of New York.



**222: TWO SILK TAFFETA DAY DRESSES, c. 1882**

USD 400 - 600

1 red & black horizontal striped silk taffeta ombre plaid w/ tailored bodice, CF black silk velvet covered button closures, peplum & skirt accents, black velvet collar, cuffs, ruffled & asymmetrically draped bustle, B 37.5", W 28", L 22", Skirt W 25", L 42", (buttons worn, 1 missing, underarms patched, stabilization in sleeves, skirt w/ scattered tiny- small holes); 1 purple & ivory tattersall check silk taffeta walking dress w/ purple silk taffeta lapel, stand collar, CF button closures & sleeve, lace cuff, skirt w/ 4 rows of knife pleated purple silk taffeta edged w/ bias cut silk bands, cross over side panels to asymmetrical front drape, B 34", W 23", L 21-24", Skirt W 24", L 38", (light stains & holes throughout) both fair. Museum of the City of New York.



**223: TWO DAY DRESSES, EARLY 1880s**

USD 300 - 500

1 cotton organdy at home gown w/ horizontally ruched bodice gathered into corselet style W extending over Hs to gathered skirt ruffle at bustle & flounce edged w/ cotton lace, double collar of lace continuing down either side of CF & expanding at W to double ruffle at either side of pleated & ruched front panel, full length shaped sleeves edged in lace ruffle, B 38", W 23", L 57", (discoloration & spot stains throughout); 2-pc ivory ribbed cotton walking ensemble w/ fitted bodice trimmed in Heilmann embroidered lace in pinwheel floral broderie anglaise design, asymmetrical cross over front skirt w/ gathered ruffle, B 32", W 22", L 21.5", skirt W 22.5", L 37"-45", (discoloration throughout, no skirt closures & spot stains) both fair. Museum of the City of New York.



**224: GREY SILK TAFFETA PROMENADE GOWN, c. 1869**

USD 400 - 600

2-pc elephant grey silk taffeta gown, fitted bodice w/ deep pointed front & tabbed back peplum, CF thread covered needlelace button closure, four rows of reverse ruching to outside of full gathered sleeve from SH to cuff & at skirt front & back flounce, self ruffle w/ self bias finishing to neckline, cuffs, peplum & skirt, B 38.5", W 26.5", L 14.5"-24.5", skirt W 27.5", L 41.5"-49.5", (buttons on bodice worn, shattering left CF, light underarm stains, SS's let out on bodice, few spot stains to skirt, hem stains) good. Museum of the City of New York.



**225: TWO BLACK DAY DRESSES, 1900**

USD 300 - 500

2-pc black Chantilly lace gown w/ fitted bodice of black lace pleated into CF & CB w/ inset yoke of ruched silk satin edged w/ brown silk satin applied ruffles, full skirt w/ gathered at CB, 1900, B 36.5", W 26.5", L 17", skirt W 28.5", L 40-42", (cuffs, W band & hem fraying, SH lining shattered, 0.25"-1" holes front)fair; 1 black & cream silk faille bodice w/ vertical tucks let out at B & re-pleated into CF w/ cage of black gathered silk satin ribbon, late 1890s high leg o' mutton sleeve puffs w/ flat horizontal SH lapel edged w/ ruffled ribbon into V-shaped extension at back SH, 1897, B 31.5", W 24.25", L 16", (shattering to left SH, bones detaching, missing closures) good; 1 black silk taffeta skirt, W 22", L 39-45", good; t/w black silk reticule.



**226: MARIE ROBEL PATTERNED SILK FAILLE PROMENADE GOWN**

USD 400 - 600

2-pc pale celadon patterned silk faille fitted bodice w/ bolero style front edged in pleated silk chiffon, pearls & silvered glass beads, 2-pc fitted sleeve w/ large SH puff, pleated standing collar of gold figured silk w/ shaped pleated chiffon ruffle & CB flat bows, cummerbund W of same gold figured silk w/ double bows at CB, shaped gored skirt w/ gathered fullness at CB, label "Marie Robel, Dresden", c. 1898, B 33.5", W 25.5", L 16", skirt W 24", L 41-42", (3 spot stains CF B, collar shattering, light underarm stains, four 1.25"-1.75" stains to lap & right side, 4" faint stain lap) good. Museum of the City of New York .

## ROMANCE SALE - VINTAGE FOR YOUR VALENTINE



### 227: AUTHENTICATED CHANEL JUMBO CAVIAR QUILTED BAG, PARIS,

USD 1,200 - 2,000

Unused jumbo handbag w/ classic single flap, black calfskin quilted leather, interwoven SH strap in gold tone chain & leather can be worn doubled up or as single strap, gold tone Chanel logo "CC" twist lock closure, single back exterior curved patch pocket, 1 interior patch & 1 zip pocket w/ "CC" logo pull, comes w/ Chanel protective slip cover, interior hologram authentication sticker w/ serial #6136656, label "Chanel, Paris, Made in France", 12" x 8.5" x 3", very good-excellent.

---