

# Augusta Auctions



Autumn Treasures For Your Closet

---

Wednesday - September 15, 2021

## Autumn Treasures For Your Closet



### 1: TWO DAY DRESSES, 1912-1914

USD 400 - 600

2-pc day ensemble of maroon fine broadcloth & black velvet jacket w/ sailor collar & deep reverses, looped braid & velvet cover buttons to lapel, SLVs & side slit in gored skirt, c. 1914, B 40", W 34", L 21", (W modified, other velvet trims w/ damage, buttons worn, 5 tiny holes at lapel, 3 at left side, 1 tiny & 0.25" at left SLV), skirt W 27.5", L 39", (lots of tiny-0.25" holes at front above hem, velvet insert shattering, buttons worn) fair; 1 printed china silk day dress w/ chemical lace yoke & cuffs, edged w/ padded piping, inserted front panel w/ covered buttons, tucking at SLVs, Hs & at skirt inserts, c. 1912, B 41.5", W 27.25", L 51.5", (missing/detached loops for CB closure, trim shattering, 1" & 0.25" spot stain right B, 0.5" hole at CF W) good.



### 2: TWO TEA GOWNS, 1905-1912

USD 400 - 600

1 cream net tea gown w/ raised/padded hand embroidery & cutwork, fine crochet inserts & soutache applique, modified sailor collar extended over SHs to W, tape lace yoke, fine tucking & ruching, black silk velvet edging at neck slvs & hem, B 41", W 29", L 55", (1" & 2" spot stains, sm tear & repairs & fraying to CB capelet, scattered tiny-0.25" spot stains throughout, slip N/I) very good; 1 cream dotted net over blush china silk underdress, chevron yoked monobosom bodice, tucking to bodice, SLVS & deep hem flounce, B 50", W 29", L 60", (tiny-0.25" holes in underdress, 0.5" tear right side of CB W opening, tiny-0.75" holes & spot stains & net overdress, wear to binding at collar) good.



### 3: PINK LINEN DAY DRESS, 1910-1912

USD 400 - 600

Pink linen dress w/ inserted neck yoke & undersleeve w/ polka dot, mm lace appliqué, corded embroidered & black silk velvet bows, broad applied front hem band of fine Heilmann embroidery on silk, B 52.5", W 25.5", L 57", (lace & velvet bows worn, light pilling, scattered tiny-0.5" spot stains, buttons stained, 3" repair right of CB below W, hem trims later addition) good.



### 4: HAND EMBROIDERED TEA GOWN, c. 1910

USD 400 - 600

Cream cotton mull w/ entirely hand work heavy padded embroidery edged w/ chainstitch, yoke, collar & edging at faux bolero front of chemical lace, puff sleeves, slightly trained skirt w/ lace insertions & deep let out tucks, B 39", W 26", L 56.5"-66", (modern underdress of pink rayon taffeta, staining & discoloration throughout, scattered tiny holes & spot stains) good.



### 5: THOUSAND & ONE NIGHTS INSPIRED EVENING GOWN, c. 1910

USD 500 - 800

Celadon green silk satin evening gown w/ black net bodice overlay & dolman sleeves, bobbin & needle lace front & back inserts & borders of flat black paillettes extending from SH to W at front at back bodice & at edges of hexagonal black net draped H panels, wide decorative heavy metallic embroidered edging on metallic net ground w/ soutache & faux jewels in Islamic inspired design at sleeve cuff, W & H panel hem, B 46", W 27.5", L 59"-22.5", (1.25" stain CF B, black tulle at neckline worn, beads/faux stones loose & a few missing, underarm stains, satin underskirt faded front, w/ tiny-1" stains scattered throughout & tiny-0.25" holes) good.



### 6: TWO YELLOW SUMMER DRESSES, 1930-1940

USD 300 - 500

1 marigold cotton lace draped over bodice, self covered CF decorative buttons, narrow self belt & full georgette skirt, over synthetic underdress, c. 1940, B 38", W 30", L 58", (lace freying, scattered tiny-0.25" holes in lace, light staining throughout skirt, 2 clusters of tiny- 2" holes at hem, belt worn/stained) good; 1 pale gold bias cut silk w/ V-neck w/ yellow silk rose at CF, double gathered puff sleeves, applied W ties to bow at CB, 1930s, B 40", W 30"-36", L 55.5", (shattering at underarms & small area at SHs, tiny light spot stains to skirt, 1" tear at CB opening) fair-good.

## Autumn Treasures For Your Closet



### 7: VOIDED SILK VELVET GOWN W/ MATCHING BOLERO, c. 1937

USD 400 - 600

Voided silk velvet gown in linear floral & leaf spiral motif w/ cream silk textured crepe blouson bodice & matching bolero jacket, gown B 50", W 28", L 61", (few tiny pulls at neckline, 0.25" spot stain left SH, 6" repair left side above hem, 2.25" hem tape worn & detaching CB), voided velvet bolero, B 44", L 14.5", (tiny spot stains at back SH) very good.



### 8: TWO VELVET DRESSES, NEW YORK, 1930s

USD 400 - 600

1 brown silk velvet dress w/ fitted W gathered under B, double row ruched collar, slashed dolman sleeves to deep fitted cuff w/ row of self-covered decorative buttons, keyhole CB, slender self belt w/ paste buckle, bias cut flared skirt, c. 1935, B 40", W 32", L 57", (stones missing in buckle, 1.75" seam opening left cuff, 2 0.5" holes right SS at W, 1.25" repair at CF W seam, 1.5" tear at right cuff slit) good-very good; 1 purple velvet dress w/ flat gel sequins to neckline & beaded spot motif B & SLV, label Original Perfect Dress, New York", B 46", W 39", L 43".5", (minor bead loss, 0.5" hole CF neckline, two 0.25" spot stains CF B, light crushing right SH blade, fabric detaching at belt buckle, sequins worn) very good.



### 9: TWO GREEN CREPE AFTERNOON DRESS, EARLY 1930s-MID 1940s

USD 400 - 600

1 loden green crepe day dress w/ flat faceted nailhead & rhinestone brooch frame, knife pleats to left H, slender tie belt, CB zip closure, mid 1940s, label "A Mil Jay Original", B 38", W 28.5", L 43.5", (discoloration throughout, tiny hole CF abovehem); 1 deep forest green crepe day dress w/ draped front panel to back ties clasped w/ embossed bronzed leaf buckle, silk velvet draped front collar clasped at SH w/round shield shaped buttons, sleeves w/ velvet insertions & fagoting, early 1930s, B 45", W 38", L 46", (wear at left underarm & back of neck, scattered tiny-0.5"stains esp. at lap, tiny snack to velvet right sleeve) both good- very good.



### 10: TWO PARTY DRESSES, c. 1940

USD 400 - 600

1 green & white gingham country party dress w/ fitted W panel into gathered front bodice, puff sleeves, scoop neck trimmed w/ cream silk lace edged ruffle, flared multiple chevron pieced skirt w/ inserted bands of white organdy, B 33", W 27", L 59", (neck ruffle discolored, lots of tiny - 2" holes, stains, & repairs, 5" repair at stripe right H, neck ruffle w/ numerous 0.25"-3.5" repairs); 1 black organza lingerie evening gown w/ graduating lace bands on skirt, inset at edging neckline & puff sleeves, B 47.5", W 26", L 66", (0.25"-1" holes in wide W lace panel, esp. at edges, 3" seam opening CF W, 2" hole at left SH seam, slip N/I) both fair. From the Collection of Smith College.



### 11: JACQMAR PRINTED DAY DRESS, LONDON, EARLY 1940s

USD 600 - 800

Printed silk foulard faux wrap dress w/ densely patterned city scape & cavorting figures, bias cut faux dolman sleeves w/ paired self covered buttons for fitted cuff, CF wrap bodice w/ cross over extended ties & zip closure, printed "Alice in Black Out by Jacqmar", B 40", W 25.5", L 58", (1 tiny hole back above W, two 0.25 stains on right sleeve cuff buttons, conserved 3.5" x 2.5" 'L' shaped tear above hem) very good.



### 12: THREE FIT & FLARE DAY DRESSES, AMERICA, 1950s

USD 400 - 600

1 midnight navy day dress w/ pleated collar, short SLV, turn back cuff w/ small velvet bows, velvet belt, full skirt w/ inset cording in undulating wave pattern, B 44.5", W 28", L 44", (light stain CF W, belt, SHs & collar worn, seam opening at cuff); 1 silk day dress w/ printed yellow, orange & brown butterfly motif on ivory ground, shirt collar to CF button closures, belted, label "Julie Miller California", B 42.5", W 29", L 43", (button detached, underarm stains, discoloration SHs & collar); 1 yellow faille coat dress w/ CF button closure, narrow shawl collar, glove length SLV w/ winged turn back cuff, belt, label "Lady Alice Stitched & Styled in CA", B 42", W 28", L 44.5", (belt & hem worn, discoloration at underarms & SHs, spot stains) all very good.

## Autumn Treasures For Your Closet



### 13: THREE EVENING GARMENTS, AMERICA, 1950-1960s

USD 400 - 600

1 black cocktail dress w/ self covered buttons at CF, attached peplum extending to oversized, flat bow at CB w/ ruching at CF, cuffs, & Ss, B 35", W 25", L 46.5", (modified w/ visible stitch marks, ruching undone at CF, stitches pulling at seams, 1 tack left cuff undone) good; 1 changeante green & black hostess gown w/ black velvet shawl collar, cuffs, tie belt & draped pocket tabs, label "Tula Designers Collection", B 43.5", W 27", L 61", (2 spot stains CF at knee, tiny hole CB between SH blades) very good; 1 black cotton summer evening coat w/ corded & gathered sleeves & free front, label "Suzy Perette", B 46", L 42", (very light staining SHs, left B, & hem) very good.



### 14: THREE SHEATH DRESSES W/ MATCHING OVERWEAR, AMERICA,

USD 400 - 600

3 fitted sheath dresses w/ matching coats or jackets: 1 pale blue w/ inset V-neck embellished w/ crystal beads, faux pearls & rhinestones, matching blazer, jckt B 42", L 21.5", dress B 38", L 39", (tiny pull CF dress W, 1" stain back right armscye, hem facings falling); 1 saffron surah w/ silver & saffron cord embellishment to roll collar & cuff of jckt, jckt B 40", L 22.5", dress B 37", L 40.5", W 32", (light fraying to trim, 2 small stains to hem, pulls to jckt neckline); 1 blue, yellow & ivory brocatelle, coat w/ band collar & 3 self covered CF buttons, label "Lilli Russell Lakewood Denver", jckt B 46", W 38", L 42.5", dress B 39.5", W 33", L 42.5", (light fraying left B dress & jckt buttonholes, 2 stains to B, spot stains lap) all good- very good.



### 15: THREE SPRING OR SUMMER EVENING COATS, 1950-1960s

USD 400 - 600

1 chine silk taffeta evening coat w/ pink, purple & gray peony & green sprig motif on ivory ground, B 65", L 40", (few pin holes across back of neck & SHs); 1 cerulean blue satin evening coat w/ deep pelerine style collar, 2 oversized self covered button closures, label "An Authentic Sandra Sage Creation", B 51", L 40.5"-43.5", (light scuffing & scattered tiny pulls, light 12" stain right side of lining); 1 chine silk taffeta w/ blue, green & purple hydrangea motif on ivory ground, free front w/ slender shawl collar to sailor at back, attached pleated sleeve w/ flat self bow, B 52", L 41"-45", (1 tiny & 1 0.25" spot stains to lining, left sleeve bow, 4.25" stain left cuff) all good- very good.



### 16: ONE IRENE & ONE SOPHIE OF SAKS SKIRT SUITS, AMERICA,

USD 400 - 600

1 in brown & cream patterned silk overprinted w/ black frond, faux coat dress w/ CF self covered buttons, round collar, 3/4 sleeves, matching jacket w/ pilgrim collar & self covered CF buttons, both w/ black velvet trim detailing cut & applied in crenellated patterned, label "Sophie Original", jckt B 39", L 16.5", dress B 38", W 26.75", L 42.5", (buttons worn & 1 loose); 1 mocha silk surah fitted sheath w/ white & coral insertions, matching jacket w/ white insertion around neckline to CF & continuing across B to CB, faux tabbed pocket at H & B, free front w/ collar facing to match dress, both label "Irene!", dress B 38", W 28", L 46.5", jkt B 44", L 28", (thin 1.5" stain left side of skirt at knee, light underarm stains, lining discolored) both very good.



### 17: TWO NAVY IRENE SKIRT SUITS, AMERICA, 1949-1953

USD 400 - 600

1 blue to black changeante faux matlasse skirt suit, fitted jacket w/ SH & princess seam pocket trimmed w/ crenelated insertions, matching skirt w/ double diagonal tucks at H, label "Irene, Exclusively for Bullocks-Wilshire", B 36", W 29.5", L 24.5", skirt W 26.5", L 28", (1 stone missing in top & 4th button, two 0.5" stains at knee) very good; 1 blue tattersall check skirt suit w/ notched Peter Pan collar to points mirrored at CF & termination of Ss, CF button closures, 3 button suit sleeve matching skirt, label "Irene, Exclusively for Neiman-Marcus Dallas", B 38", W 29", L 25.5", skirt W 26", L 27", (inking on jacket label & starting to detach, lining stained & underarm shattered, white inking inside skirt W band, 2 tiny holes at left SLV) good.



### 18: TWO BONNIE CASHIN SKIRT SETS, AMERICA, 1955-1960

USD 400 - 600

Both label "A Bonnie Cashin Design, Sills & Co.", 1955-1960: 2-pc brown, black & cream wool bouclé ladder stripe w/ brown leather edging to neckline, CF opening, cuffs, hem & piped slash side pockets, silver tone safety hook closure at CF, matching calf length skirt, B 40", L 21.5", skirt W 26", L 27", (starting to pill) very good; 2-pc oatmeal, taupe & black complex basket weave, shaped suede band collar into CF edging & around hem, suede edged pockets & cuffs domed brushed brass CF button closures, lined in pink silk crepe, matching knee length skirt, B 42", L 24", skirt W 27", L 23.5", (lightly worn esp at suede, skirt shortened) very good.

## Autumn Treasures For Your Closet



### 19: TWO BONNIE CASHIN SKIRT SETS, AMERICA, 1955-1972

USD 400 - 600

2 pc navy, mustard & red houndstooth plaid on pink & cream ground, Peter Pan collar, CF opening, fitchet pockets & cuffs bound w/ blue leather, skirt w/ same binding & CF functional toggle openings, 1967-1972, label "Sills, a Bonnie Cashin Design", B 45", L 24", skirt W 29.25", L 24", (buckles tarnished & scratched, spot stains to lining); 2-pc brown twill confetti tweed skirt suit, collar, front opening, slash pockets & cuffs piped w/ brown leather, faux leather button closures, matching skirt, 1955-1960, label "A Bonnie Cashin Design, Sills and Co.", B 42", L 24", skirt W 25.5", L 25", (0.25" stain to leather piping CF) both very good.



### 20: MCFADDEN QUILTED SILK COAT, AMERICA, 1980s

USD 400 - 600

Double faced horizontally quilted silk fitted coat w/ stylized organic & runic metallic embroidery, round neckline, long sleeved w/ padded SH & deep turn back cuff, hook & eye closures at W, B 36", W 31", L 46", (0.5" spot stain CF B, light stains torso & left SS, light tide marks hem, minor embroidery fraying) good.



### 21: TRIGERE SILK COAT, AMERICA, 1980s

USD 400 - 600

Black silk summer coat based on 16th C German goeller w/ body & sleeves gathered into deep SH yoke, convertible collar w/ double button closures at CF, full turn back cuffed sleeves, label "A Trigere Coat", B 65", L 45.5", (top button loose) excellent.



### 22: GIVENCHY PLAID SWEATER JACKET, PARIS, 1980s

USD 400 - 600

Blue, black, yellow & pink on red knitted plaid, red rib knitted collar, CF, hem & cuffs, front button closure, label "Givenchy, Made in France, Paris #16110", B 48", L 31.5", (worn & some pilling, label partially detached, SH pad innards disintegrating) good.



### 23: VALENTINO CASHMERE CAPE, ITALY, MODERN

USD 400 - 600

Cashmere cape in brown heather tweed w/ plum window check, tweed, lined & edged w/ plum cashmere jersey, label "Valentino Boutique", L 36.5", excellent.



### 24: TWO WOOL BONNIE CASHIN COATS, AMERICA, 1955-1965

USD 400 - 600

1 mohair & wool double faced black & brown coat w/ oversized shawl collar terminating in V at CB & w/ CF elongated tabs, brown suede bindings, raglan half sleeves, unlabeled Bonnie Cashin, B 48", L 39", (suede trim very worn esp. at hem, wear esp at pockets); 1 ivory twill weave mohair coat w/ deep shawl collar, white leather & brass buckle front closure & white leather bindings, D shaped inset SS pockets, self lined, label "A Bonnie Cashin Design Sills and Co.", B 48", L 37", (leather buckle strap worn & stained, metal buckle scratched & tarnished, leather trim worn & dirty) both good.



### 25: TWO BONNIE CASHIN WOOL OVERCOATS, AMERICA, 1955-1972

USD 400 - 600

1 heavy novelty wool boucle coat, standing funnel collar, wide navy leather CF w/ hidden brass snap closures, applied leather panels w/ bound buttonhole for vinyl cord tie at CF, 1968-1972, label "Sills, a Bonnie Cashin Design", B 44", L 41", (pilling throughout) good; 1 wool tweed coat in shades of brown & cream w/ multicolored flecks, collar, CF, cuffs, & hem trimmed in brown leather, oversized applied patchpockets, brass ball & pin closure at throat, 1955-1960, label "A Bonnie Cashin Design, Sills & Co.", B 54", L 38", (light wear to edges of leather trim, minor pilling) very good.

## Autumn Treasures For Your Closet



### 26: TWO BONNIE CASHIN FUR TRIMMED LEATHER COAT, AMERICA,

USD 500 - 800

1 orange leather car coat, raccoon fur cuffs & shawl collar extending to CF opening w/ double belt buckle closures, orange faux fur lining, 1967-1972, label "Sills, a Bonnie Cashin Design?", B 50", L 36", (fur trim misshapen w/ small areas of matting, lining dirty & w/ 4" hole in left underarm, lightly worn & w/ some spot stains); 1 cream leather coat w/ broad convertible raccoon collar & hem band, faux fur lining w/ brass toggle closure, 1963-1968, label "Sills, a Bonnie Cashin Design", B 45.5", L 36", (buckles scratched & tarnished, collar misshapen, leather lightly worn & discolored, scattered tiny spot stains) both very good.

---



### 27: TWO FOX FUR STOLES, AMERICA, c. 1970 & 1985

USD 400 - 600

1 fur scarf-style stole in brown & black fox fur, c. 1985, designed by Mary Ann Restivo, 5"-7" x 4" x 93", (fur misshapen in several spots); 1 fur stole in silver fox fur w/ long double pelt & slit for pull through closure, c. 1970, 7"-16" x 2" x 67", (fur very lightly shedding) both very good. Museum at FIT.

---



### 28: SABLE COAT, NEW YORK, LATE 20TH C

USD 400 - 600

Sable coat w/ full cuffed sleeve, convertible collar, self tie belt, striped brown silk lining, label "Ben Kahn", B 48", L 51", (fur crushed at lapels, 1 undone tack for CB lining, 4" seam opening in lining right arm'scye) very good.

---



### 29: MINK COAT, LATE 20TH C

USD 400 - 600

Mink coat w/ notched convertible collar, CF hook & eye closures, silk satin lining w/ embroidered bows, B 40", L 47.5", (few tacks undone CB lining) excellent.

---



### 30: LYNX FUR COAT, 1960s

USD 500 - 800

Tan fur coat w/ large hood, 2 CF hook & eye closures, lavender floral brocaded lining, B 43", L 30", shoulder to shoulder, 19", shoulder to hands, 25", (lining worn esp. at underarms & w/ some pulls & stains) excellent.

---



### 31: RACCOON & FISHER CAT FUR COAT, NEW YORK, c. 1973 & 1977

USD 400 - 600

1 calf length coat of raccoon fur w/ attached raglan hood, shawl collar & seam pockets, c. 1977, label "Furs Alixandre, New York", B 36", L 44", (fur worn around hood edge & neck, 3.5" seam opening right SH); 1 H length jacket of natural brown Canadian fisher fur w/ large notched collar & seam pockets, c. 1973, label "Ben Kahn", B 40", L 33.5", (fur worn at sides, sleeve lining, CF opening & lapel edges) both good. Museum at FIT.

---



### 32: CASHMERE & SILVER FOX COAT, AMERICA, A/W 1973

USD 400 - 600

Black cashmere wrap coat w/ oversize turn-back cuffs & wide convertible collar of silver fox fur, c. fall 1973, label "Hazel Haire for Fredricks Sport", B 44", L 39.5", (label partially detached, some tacks at cuffs undone, very light shedding, fur slightly misshaped, CB lining tacks undone) very good. Museum at FIT.

---

## Autumn Treasures For Your Closet



### 33: OSCAR DE LA RENTA JACKET, AMERICA, c. 1972

USD 500 - 800

1 pink silk satin quilted evening jacket w/ kimono sleeves & fox fur extended collar & cuffs c. 1972, unlabeled Oscar de la Renta, B 40", L 29", (scattered tiny pulls & tiny-0.5" spot stains, very minor shedding) very good. Museum at FIT.

---



### 34: BIRGER CHRISTENSEN FOR HERMES SHEARED VEST, DENMARK, c.

USD 800 - 1,200

Brown tunic vest of sheared fur w/ V neck, horizontally pieced SH yoke & horizontal bands at flared W, open sides w/ self ties, quilted brown cotton lining, c. 1979, Denmark, label "Birger Christensen, KGL Hofleverander Kobenhaun", retailed by Hermes, B 38", L 24"-25", excellent. Museum at FIT.

---



### 35: ODICINI COUTURE SNAKESKIN SKIRT & FUR JACKET, ITALY &

USD 500 - 800

1 dyed blue short sleeved crop jacket, possibly goat or lamb, 1965-1970, B 40", L 20.5", (label removed, inside worn) very good; 1 straight line red & black snakeskin skirt w/ black suede W band & wide black rabbit fur hem, c. 1984, label "Odicini Couture", W 28.5", L 24", (some scales peeling, paint on zip chipping) very good. Museum at FIT.

---



### 36: STEPHEN BURROWS MINK COAT, AMERICA, 1970s

USD 800 - 1,200

Ranch mink coat w/ convertible collar, 4 CF covered hook closure, lined in brown silk, label "Stephen Burrows" & "Bonwit Teller", B 43", L 32.5", (scattered tiny patches of pressed fur, stitching on loops for closures worn) very good.

---



### 37: AUTOGRAPHED GIANNI VERSACE PURPLE DYED LEATHER JACKET &

USD 1,200 - 1,500

1 dyed purple leather jacket lined in dyed purple shearling fur processed to simulate fox fur w/ raglan sleeve & zip CF closure, matching wrist length gloves, label "Designer Made by Ruffo, G Vee (Signature), Italian Vogue 8 July, 1997, One-Off", B 46.5", L 30", glove palm Wd 4", L 8.75", (light fraying & fur escaping seams on gloves) jacket excellent, gloves very good. Museum at FIT.

---



### 38: MIYA & YOSHI & ISSEY MIYAKE, AMERICA & JAPAN, 1979-1982

USD 500 - 800

1 cumin cotton canvas coat w/ double asymmetrical zip closure, convertible extended collar, inset H pocket, quilted lining, self belt, Miya & Yoshi, 1979-1982, B 47", L 48.5", (small stains, light wear, paint on zip chipped) good; 1 black robe style asymmetrical mans coat w/ single button at W for closure, SSs underarm pockets, label "Issey Miyake Men", S/S 1986, CH 80", L 56", (light wear) very good. From the Collection of Smith College.

---



### 39: FENDI KIMONO STYLE OVERCOAT, ITALY, 1980s

USD 400 - 600

1 red leather Kimono robe inspired coat w/ turn back cuffs, narrow obi style tie belt, lining w/ "Fendi" logo, B 52", W 47", L 48", belt Wd 2.75", L 91.75", (label removed, dirty esp. at cuffs & around W, leather lightly worn, tiny-0.25" spot stains) good. From the Collection of Smith College.

---

## Autumn Treasures For Your Closet



### 40: MONIQUE VAN VOOREN WORN DESIGNER DAYWEAR, FRENCH,

USD 500 - 800

1 woven wool blend boucle jacket w/ narrow horizontal rabbit strip insertions & rabbit fur collar, tan leather SH detail & W band w/ CF buckle, label "Marilyn Blumer", B 50", L 26.5", (fur shedding, leather worn/stained); 1 ombre wool twill plaid coat w/rabbit collar & matching skirt, skirt label "Emanuel Ungaro, Paris?", B 40", L 52", (wear, light frays & pulls, shedding, closure loose); 3-pc ensemble c/o velour damask skirt & jacket set w/ mink trim & white Pierrot inspired blouse w/ puff sleeve, label "Escada", B 46", L 23", skirt W 37.5", L 21", blouse B 45", L 24", (shedding, light wear, blouse & lining stains, 2 spot stains lap & 1" right H, 3" seam repair left underarm, fraying back collar) all fair- good. From the Estate of Monique Van Vooren.



### 41: MONIQUE VAN VOOREN DESIGNER OUTWEAR, AMERICA & FRANCE,

USD 500 - 800

1 evening coat of floral printed silk heavily embroidered w/ beads & sequins, lined in canary yellow silk satin, label "Leon Paule Original", B 50", L 38.5", (minor bead & sequin loss, shattering at torso, SHs & underarms) fair; 1 ivory ribbed silk blazer printed w/ multicolored rose motif, single B pocket & self lined horizontal H pockets, self-covered buttons, label "Loris Azzaro Paris", made in France, B 44", W 39", L 27.5", (1 button replaced, stains/discoloration, stained collar & underarms) good; 1 black paillette encrusted evening coat w/ horsehair cuff & hem, label "Ralph Rucci CHADO", B 40", L 43", (underarms stains, white stains to SHs, buttons & lapel, minor sequin loss, dirty) good. From the Estate of Monique Van Vooren.



### 42: MONIQUE VAN VOOREN WORN ARMANI JACKETS, ITALY, MODERN

USD 400 - 600

1 printed velvet jacket w/ botanical purple, grey & pixelated lavender motifs, label "Giorgio Armani", B 44", L 26.5", (8" stain deteriorating fabric left front H, two 0.5" holes left B) fair; 1 black silk georgette heavily beaded w/ short crystal bugle beads in horizontal & chevron bands, raglan sleeve, scoop neck w/ single hook & eye closure at throat, label "Armani Collection", B 44", L 23", (minor bead loss, tiny-0.5" stains CF) very good; 1 lilac silk flared jacket w/ scalloped front hem, shawl collar gathered to tabbed band ties, single butterfly button w/ rhinestone accented wings, label "Giorgio Armani", B 42", W 36", L 25", (0.25"-1" light stains, 2.5" light stain left H) good. From the Estate of Monique Van Vooren.



### 43: MONIQUE VAN VOOREN WORN VEGAS EVENING DRESS, 1970s

USD 400 - 600

Cream net dress w/ celestial & shooting star motifs in prong set multicolored rhinestones & baguettes, scoop neck w/ triangular prong set & round rhinestones, keyhole back, long sleeve, scalloped hemline to left front side slit, B 36"-40", W 24"-30", L 59", (1.25" red stain left SH, 7.5" & 7" stain left SH, 7" stain seat, tiny-1" stains, 4.25" repair CB, broken brides throughout) fair. From the Estate of Monique Van Vooren.



### 44: MONIQUE VAN VOOREN RHINESTONE GOWN & GLITTER COPY,

USD 400 - 600

Rhinestone appliqué & glitter copy both w/ yoke bands into inverted triangles w/ falls based on Syrian aba, both scoop neck, long sleeve: 1 Lycra jersey w/ silver glitter dots & high slit, B 36"-40", W 28"-32", L 63.5", (light wear, missing glitter, several smeared glue dots, 1.25" stain seat) good; 1 black mesh w/ rhinestones, B 38", W 28", L 40.5", (tiny-0.5" holes to SHs & torso, tiny-1" stains, 15.5" x 5.5" panel inserted CB, SS slit sewn shut & re-hemmed) fair; 1 black georgette evening robe w/ rhinestones, B 50", L 57.5", (tiny-1" holes & stains, 9" tear collar, hem badly torn, missing rhinestones, 0.75" repair left SS) poor. From the Estate of Monique Van Vooren.



### 45: TWO CHADO RALPH RUCCI COCKTAIL DRESSES, AMERICA, 1990s

USD 500 - 800

1 black silk chiffon dress w/ tucked body, open SH w/ chiffon sleeve drapes edged in square black paillettes & underarm black silk cord lacing, wide hem band of square black paillettes w/ bristling horsehair ruffle, label "Chado Ralph Rucci", B 39", W 35", L 42.5", (tiny white spot stains, minor sequin loss, pulls at back) very good; 1 scoop neck, 3/4 length sleeve tunic in polyester synthetic leaf patterned lace w/ inserted feathers, double chiffon incorporated slip, label "Ralph Rucci CHADO", B 40", W 34", L 41.5", (pulls, 4" tear left W, spot stains lap) good. From the Estate of Monique Van Vooren.



## Autumn Treasures For Your Closet



### 46: MONIQUE VAN VOOREN LORIS AZZARO & UNLABELED EVENING

USD 500 - 800

1 evening gown w/ plum silk satin Basque W bodice overlaid w/ parallel geometric bands of ruched velour, long balloon sleeves & overskirt of black tulle w/ large velour polkadots over multilayered skirt stiffened w/ horsehair bands, label "Lorris Azzaro, Paris", B 41", W 29", L 60", (significant wear to sides of CB, chenille trim lightly worn, zigzag trim detaching 4" at CB & 2.5" CF) very good; 1 black silk dress evening gown w/ high round neckline & deep plunging back, heavily beaded horizontal bands, deep hem band of dyed black fox fur, velveteen balloon sleeves w/ self cuff gathered to elbow, B 37.5", W 27", L 57"-65", (bead loss, fur shedding, lining shattered, 3" hole back right knee) good. From the Estate of Monique Van Vooren.



### 47: MONIQUE VAN VOOREN HALSTON & DOUGLAS HANNANT EVENING

USD 500 - 800

1 fine woven white check fitted evening dress screen printed in asymmetrical cascading scatter floral motif w/ appliqué flowers & embroidered w/ seed beads, front scoop neckline w/ keyhole at CB, long sleeve, slightly trained trumpet skirt, label "Douglas Hannant", B 39", W 32", L 59"-66", (both SS's pulling w/ some repairs, tiny-0.5" holes left underarm, B & left SH, stains to B & lap) fair-good; 1 cream silk jersey halter dress, label "Halston", B 38"-42", W 31"-36", L 54", (light discoloration & tiny light stains, few tiny pulls & holes, 1" repair CB neckline, hemline altered) very good. From the Estate of Monique Van Vooren.



### 48: BOZA KOSAK FOR MONIQUE VAN VOOREN STAGE ENSEMBLE, 1980s

USD 500 - 800

3-pc American Western inspired stage ensemble of slate blue panne velvet w/ satin floral appliqués & edging & deep chainette fringe c/o long sleeved tunic w/ chiffon yoke, flat stylized rose at CF & CB, long sleeve extended to chevron sleeve finish, deep V waist front & back in fringe enhanced chevron shape, matching imitation chaps four paneled skirt & scarf, label "Boza Kosak, Roma", B up to 60", skirt W 28", L 39", (L shaped 1.25" x 1.25" tear right SH, 0.5" tear CB collar & 0.75" left SH, stains right sleeve, discoloration, 3.25" repair right skirt SS & 1.75" lap, 7.5" partially repaired tear left SS) fair-good. From the Estate of Monique Van Vooren.



### 49: CEIL CHAPMAN FOR MONIQUE VAN VOOREN, AMERICA, EARLY

USD 500 - 800

Pale peach ombre silk taffeta evening gown w/ sculpted & draped front bodice w/ silvered bugle beads & stamped iridescent sequin embroidered in cascading vegetal motifs to raised off the SH yoke & flared gored skirt w/, SS zip closure, label "Ceil Chapman", B 37", W 24.5", L 48.5", (bead & sequin loss, stains, tacks partially undone at neckline, tiny hole left SS, stiffened lining worn, stains, tiny-0.5" holes to skirt) good. From the Estate of Monique Van Vooren.



### 50: MONIQUE VAN VOOREN WORN CHADO RALPH RUCCI GOWN, MODERN

USD 500 - 800

Black silk jersey & taffeta evening gown w/ mesh peekaboo back & long sleeves, sculptural W band in fuchsia silk encrusted w/ crystal bugle beads, asymmetrically trained voluminous skirt gathered to right H exposing Capucci inspired tiered underskirt ruffles in fuchsia, pink & peach, label "Chado Ralph Rucci", B 34"-42", W 33", L 68.5", (tiny holes back, tiny-1" light stains, 1" stain right collarbone) very good. From the Estate of Monique Van Vooren.



### 51: MONIQUE VAN VOOREN WORN FLAMENCO INSPIRED DRESS, 1977

USD 500 - 800

Party dress w/ fitted unboned Basque bodice of semi transparent black patterned net w/ deep CF lacings & CB ties, extended tulle & lace SH puffs, multi stripes of teal, lavender & purple velvet ribbon applied to net full flounced skirt, photographed w/ David Bowie in 1977, B 29"-37", W 26"-32", L 46.5"-60", (lining worn & stained, holes, tears & tiny-1" stains to ruffles, skirt altered w/ makeshift tacks) good. From the Estate of Monique Van Vooren.

## Autumn Treasures For Your Closet



### 52: THREE BEAD FRAME BAGS, 1920s

USD 400 - 600

All knitted or crochet w/ Austrian drape beaded looping: 1 w/ deep teal faceted beads, brass-tone metal frame w/ faceted paste sapphire, chain handle & looped fringe, 6" x 9.75", (pouch mostly detached from frame, light oxidization, few warped links); 1 peach beaded w/ silver tone frame, flat beaded handle, 5.5" x 9.75", (bead loss & pulls in net, detaching from frame, lining stained, handle attachment warped); 1 blue iridescent beaded w/ silver tone frame, rope bead handle, 3.5"-8" x 9.5", (frame tarnished, strap repaired, pulls to knit) all fair-good.



### 53: THREE STEEL CUT BEADED FRAME BAGS, 1880s & 1920s

USD 400 - 600

All w/ steel cut beads & chain handles: 1 knitted w/ steel cut beaded graduated Austrian drape, round frame w/ cherubs, 1920s, 5"-8" x 6.75", (frame tarnished, small rust areas in fringe, lining shattering); 1 crochet w/ monogrammed "EBD" in steel cut beads & w/ rose motif frame, chatelaine looped handle, lined in shammy cloth, looped fringe, stamped "German Silver?", 1880s, 5.25" x 10.5", (frame tarnished, lining dirty & worn, 2.25" of stain & rusted beads, 0.5" stain back right); 1 woven w/ silver & blue steel cut beads in diamond diaper pattern, 5.5" x 7", (bead loss, lining mostly removed, dangling pull detached & included, bead rust) all fair-good.



### 54: THREE KNITTED BEADED BAGS, 1920s

USD 400 - 600

All knitted silk w/ Austrian graduated draped scallops & chain handles: 1 peach w/ silvered crystal beads, looped fringed bands, silk ribbon embroidered interior, 4.75" x 7", (tarnish); 1 ice blue w/ crystal beads, rectangular frame, stamped "Silver Plate", 4.5"-8" x 6.5", (metal tarnished, lining replaced); 1 chartreuse knit w/ garnet colored beads, looped fringe at frame, brocaded floral ribbon at frame interior, 6"-8" x 6.5", (bead loss, oxidization, lining shattered, few bent links in handle) all good-very good.



### 55: THREE WHITING & DAVIS MESH BAGS, AMERICA, 1930s

USD 400 - 600

All label "Whiting & Co. Mesh Bags": 1 black mesh w/ ruffled mesh edge, silver tone frame w/ painted inlay, round mirror included, 7" x 6.25", (mirror worn & lightly damaged, frame dirty); 1 yellow painted armored mesh w/ yellow frame, 3.75" x 5.5", (frame dirty & slightly warped); 1 red painted armored mesh w/ enameled Deco stepped panel frame, figure eight chain handle, 6" x 6.75", (bag detaching from frame around hinges, few bent links in handle chain), (all w/ tarnished metal & chipped paint) all fair-good.



### 56: TWO WOVEN BEADED BAGS, 1920s

USD 400 - 600

Both woven: 1 multicolored steel cut beaded in double floral bouquet bordered by niches, netted base w/ twisted looped fringe, gold tone flowered openwork frieze frame, double chain handle, mauve faille lining w/ metallic galloon finish, 6" x 11", (bead loss esp. in fringe, frame tarnish); 1 w/ faceted & unfaceted beaded gold, silver, copper, black & sapphire blue beads w/ zoomorphic motif on grid w/ geometric fillings & diapered ground, goldstone open work frame w/ leaf motif, double chain handle, netted fringe, mauve satin lining, 6" x 9", (bead loss esp. in fringe, light frame tarnish & slightly warped) both very good-excellent.



### 57: TWO WILARDY VANITY BOX BAGS, 1952-1953

USD 400 - 600

Both in pearl white w/ brass tone hardware & vanity compartments, both w/ Wilardy? logo insignia: 1 oblong w/ double handle & vanity case in lid c. 1952, 7.5" x 4.25" x 4", (ghosting to lid, light wear & scratches, lid mirror chipped, lid panel slightly warped, tiny spot stains); 1 rectangular w/ single handle & vanity case in front compartment, c. 1953, 6.25" x 4.25" x 3.75", feat. In 'Carry Me' page 78-79, (ghosting at back, lid mirror damaged, dirty, light wear & scratches) (both w/ tarnished & oxidizing metal) both fair-good.

## Autumn Treasures For Your Closet



### 58: TWO WILARDY BOX BAGS, C. 1958

USD 400 - 600

1 pearl white w/ domes lid, single shaped handle & gold tone clasp set w/ disc of pearl white lucite, stamped "Wilardy" on hinge, 6.25" x 4.5" x 4", (ghosting on back, front lid & bottom, dirty, lightly scratched, tiny spot stains); 1 opaque white w/flat lid, single shaped handle & gold tone clasp set w/ disc of matte white lucite, c. 1958, stamped "Wilardy", 8.25" x 5" x 5", feat. In 'Carry Me' page 117, (mirror damaged, light scratches, discoloration & dirty), (both w/ tarnished) both good.



### 59: THREE TOOLED LEATHER HANDBAGS, MEXICO, 1950-1970s

USD 400 - 600

1 tan w/ tooled ?Mexico? on CF zip pocket, brushed cotton suedette lining, 3 compartments 1 w/ zip, 11.75" x 3.75" x 8", (wear, tiny-0.5" stains); 1 cream w/ floral & leaf motif, brown pony skin inlays, lined w/ leatherette, label "Guriogigades Mexicanasde Monterrey S.A.", 11" x 13.75" x 4.25", (wear, tiny-0.5" stains); 1 black dyed smooth & textured leather w/ single extendable strap handle, label "Jo-O-Kay Hand Tooled", 10.25" x 7" x 4.5", (strap worn, wear esp. to interior leather),(all w/ scratched & tarnished metal) all very good.



### 60: FIVE MID CENTURY HANDBAGS, AMERICA, 1950s

USD 400 - 600

1 red leather w/ brass hardware, label "Crown-Belmont Bags, Chasoff", 10.25" x 15.5" x 2.75", (light wear & scratches); 1 brown suede modern miser adaptation pouch purse, label "Lewis", 9" x 17" x 5", (light wear, coinpurse clasp oxidizing); 1 black vinyl double handbag w/ toggle strap to bottom, lined w/ grosgrain, 11" x 10" x 4.5", (lining dirty & scratched, tiny spot stains); 1 brown broadcloth w/ satin lining, change purse on elastic, label "Ingber, Made in USA", 12.5" x 8" x 2"; 1 black leather hidden clasp w/ side mechanism, 10" x 3.75" x 11", (lightly scuffed, wear at base corners), (all w/ scratched or tarnished metal) all good-very good.



### 61: TWO BONNIE CASHIN & THREE COACH HANDBAGS, 1960-MODERN

USD 400 - 600

1 brown calf skin leather satchel style handbag w/ internal compartments, label "Bonnie Cashin for Meyers", 11" x 11.75", (metal oxidizing, light scratches, light wear at edges); 1 tan leather w/ double row of self fringe, label "Bonnie Cashin Design, Cashin-Carry for Coach", 11.75" x 17.5", (light-moderate wear, tiny-0.5" stains); 3 bags, all label "Coach": 1 black double coin SH bag, 7" x 11.5" x 1", (scratched, lining worn around frame); 1 blue & green cotton twill w/ paired incorporated coin purses & seafoam green leather trim, 12" x 4" x 5.5", (tiny-0.5" spot stains, slightly dirty); 1 lilac leather, 9.25" x 19.5" x 2", (worn & dirty, scratched leather), (all w/ scratched & tarnished metal) all good-very good.



### 62: ONE JIL SANDER & ONE DOLCE & GABBANA HANDBAG, S/S 2013

USD 500 - 800

1 ?New Malavoglia? navy & burgundy leather handbag w/ original sales tag retail \$1,100 Euro, S/S 2013, original dust cover, label ?Jil Sander, Made in France?, 11.5? x 13.5? x 5.5?, excellent; 1 tan textured leather SH bag w/ padlock toggle closure, certificate of authenticity & original dust cover, label ?Dolce & Gabbana, Made in Italy?, 9? x 8? x 4?, (tarnish & wear to metal fixtures esp at clasp & internal zip) very good.



### 63: TWO BONNIE CASHIN BUCKET BAGS, AMERICA, 1965-1974

USD 500 - 800

Both w/ incorporated coin purse at CF, zip closures, adjustable SH straps, & w/ label "Bonnie Cashin for Meyers": 1 cocoa leather, label , 11" x 10" x 6", (light wear, strap starting to crack, tiny spot stains, 1" line of stains to back); 1 brown suede, 11" x 10" x 6", (light wear, tiny-0.5" spot stains, scratched, dirty & stained across base), (both w/ oxidizing & scratched metal) both good.

## Autumn Treasures For Your Closet



**64: LOUIS VUITTON LEATHER SUITCASE, FRANCE, PRE 1980**

USD 800 - 1,200

Dark brown leather w/ gold logo stencil, leather handle, tag, corners & straps, brass Éclair zipper, 27" x 18" x 8.5", lock 303 w/ 2 keys, lock 227 no key, (rails dirty, corners scuffed, strap cracking) very good.



**65: AUTHENTICATED CHANEL JUMBO CAVIAR QUILTED BAG, PARIS**

USD 2,000 - 3,000

Unused jumbo handbag w/ classic single flap, black calfskin quilted leather, interwoven SH strap in gold tone chain & leather can be worn doubled up or as single strap, gold tone Chanel logo "CC" twist lock closure, single back exterior curved patch pocket, 1 interior patch & 1 zip pocket w/ "CC" logo pull, comes w/ Chanel protective slip cover, interior hologram authentication sticker w/ serial #6136656, label "Chanel, Paris, Made in France", 2000-2002, 12" x 8.5" x 3", very good-excellent.



**66: ONE CHANTILLY & 3 SPANISH STYLE SHAWLS, 1860s & 1900-20**

USD 400 - 600

1 semi-circular Chantilly lace shawl w/ shaped neckline, c. 1860s, 38" x 86.5", (small pulls, minor fraying at edges, edges stiff); 3 in Spanish style w/ dense floral motifs, varied ground & pico edges: 1 large triangular w/ floral scalloped edge, 35" x 108", (light wear & fraying at edges); 1 rectangular shawl or mantilla, 12.75" x 100.25", (light wear to edges, tiny holes in net); 1 small rounded triangular shawl, 16.75" x 64", (light wear, minor fraying at edges) all very good-excellent.



**67: TRIANGULAR CHANTILLY LACE SHAWL, c. 1861**

USD 400 - 600

Chantilly lace triangular shawl w/ wide complex floral & lozenge border w/ weeping lotus flower at CB, c. 1861, 56" x 110.5", (wear & minor fraying at edges, stains, 0.5" opening at top edge) very good.



**68: TRIANGULAR CHANTILLY LACE SHAWL, 1850-1860s**

USD 400 - 600

Triangular Chantilly lace shawl w/ exotic floral motifs & complex shingled medallion borders graduated from CB to side, 53" x 108.5", (edges frayed, light wear) excellent.



**69: CHANTILLY LACE SHAWL, 1860s**

USD 400 - 600

Chantilly lace shawl w/ dense classical florals, crescent & fronds motifs edged w/ guilloche border of blossoms & stylized leaves, 77" x 80", (edges frayed & worn, tiny-0.5" holes, 0.5" separation at edging) good.



**70: DEMILUNE CHAINSTITCH EMBROIDERED SHAWL, MID-LATE 19TH C**

USD 400 - 600

Elongated demilune shaped shawl w/ chainstitch embroidery in flowers, leaves & posy border pattern & spot motif, 39" x 67", (light wear at edges, many tiny-0.25" holes in net) good.

## Autumn Treasures For Your Closet



### 71: HAND EMBROIDERED TAMBOUR WEDDING VEIL, 1860s

USD 500 - 800

1860s shawl modified into wedding veil w/ applied channel for gathering in headpiece in 1920s w/ scalloped edge of floral sprays & stylized guilloche border, overall spot & sprig motif on ground, 78" x 66", (light wear at edges, applied channel fraying, modified, tiny holes) very good.

---



### 72: TWO TAPE LACE APPLIQUÉ WEDDING VEILS, c. 1900

USD 400 - 600

1 large oval w/ tape lace appliqué w/ thread buttons & chainstitch embroidery, 59" x 108", (stains & discoloration, 1" repair at 1 end, tiny holes & pulls to net) good; 1 oval wedding veil w/ tape lace appliqué & thread run tendrils, Wd 52", L 107", (few tiny-0.5" stains 1 end, tiny pulls, light wear to edges) very good.

---



### 73: TWO BOBBIN LACE APPLIQUÉ SHAWLS, LATE 19TH C

USD 400 - 600

Both corner bouquets, overall spot pattern & floral edging: 1 white w/ flower edging, Wd 74", L 56", (many tiny-0.25" holes, many tiny-1" repairs) good; 1 cream lace veil w/ floral sprig & bud edging, Wd 76", L 82.5", (tiny pulls) excellent.

---

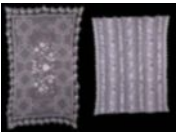


### 74: TWO NARROW APPLIQUÉ SHAWLS, c. 1900

USD 400 - 600

1 bobbin lace appliqué iris motif w/ extended paired floral, leaf & frond to either end, 16" x 105", (tiny-0.25" holes, edges lightly worn); 1 Carrickmacross w/ grape bunch motif & thread work fillings, Wd 14.5", L 109", (very light wear, tiny-0.25" holes) both very good.

---



### 75: TWO EXCEPTIONAL FILET HOUSEHOLD TEXTILES, EARLY 20TH C

USD 400 - 600

1 filet bedcover w/ padded stitch appliqué & roses, Islamic star motif in filet, heavy padded stitch floral border, c. 1910, 65.5" x 74.5", (tiny pulls, wear to embroidery, broken brides); 1 filet curtain w/ central band of perched birds, menagerie & floral bands, double row hairpin lace insertions between figural filet bands, 53.5" x 78", (pulls, few broken brides, light wear) both excellent.

---

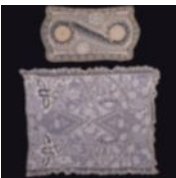


### 76: THREE UNUSUAL HOUSEHOLD TEXTILES, EARLY 20TH C

USD 400 - 600

1 large cylindrical linen lampshade cover composed of panels of bobbin & filet lace, floral cut work, embroidery & tassels, 27.5" x 97", (tassels worn & light wear, minor discoloration) very good; 1 filet crochet valance, Wd 12.5"-16", L 44.75", excellent; 1 linen custom valance w/ embroidered cut work & inserted filet panels w/ grapevine motif, small needlelace edging, Wd 13.5", circ. 69.5", (light wear & discoloration, few tiny holes & broken brides, two 1" & two 0.25" stains to filet) very good.

---



### 77: TWO COLLAGES OF REPURPOSED NEEDLEWORK, c. 1900

USD 400 - 600

1 cream table cover made from repurposed 1830s-1840s lace & embroidery, center created from two bonnet panels pieced w/ appliquéd bobbin lace & embroidered cotton mull panels, 1840s pelerine re-purposed running stitch edging, brilliant study piece, 26.5" x 47", (yellowing, tiny-0.25" holes); 1 pieced bedcover w/ needle, bobbin, chemical & filet lace, embroidery, mm lace ruffe, c. 1900, 53" x 65", (1.25" tear at seam near un-ruffled end) both very good.

---

## Autumn Treasures For Your Closet



### 78: LACE & EMBROIDERED TABLE COVERINGS & CURTAINS

USD 400 - 600

All early 20th C: 1 embroidered linen table covering w/ 18th C revival fillet, embroidered cutwork & drawn thread work, insertion & scalloped border in filet late w/ triple rose motif, early 20th C, 89.5" x 128.5", (tiny-0.5" spot stains, broken brides & pulls) very good; 1 pre-embroidered ramie table covering w/ rose & grape motif, 64.25" x 99.5", (general light wear, 0.25" rust stain 1 corner) very good; 2 matching curtain panels w/ drawn thread work, bobbin lace insertions, embroidered butterflies & eyelet embroidered scattered center motif: 1, 49" x 97", (light wear, ends raw, tiny holes, 0.75" repair 1 corner, broken brides); 1, 48" x 90.75", (2 short ends raw, light wear, tiny spot stains & holes) both good.



### 79: TWO SETS OF BED LINENS, EARLY 20TH C

USD 400 - 600

Oversized cotton bedcover & 2 matching pillow shams w/ tucking, interspersed w/ bands of mm bobbin lace as shaped appliqué border w/ fine silk ribbon edging, bedcover 110.5" x 120.5", (light fraying at edges of lace, scattered tiny holes), shams 36" x 51" & 37.5" x 52", (minor fraying at lace & ribbons); 1 linen sheet set w/ pillowcases all w/ embroidered cutwork trim & Tenerife thread fillings, 91.5", 136" (light wear) 2 matching pillowcases 34" x 31", (light wear & fraying, few broken brides, tiny spot stains, 1 w/ 1.25" section of uncut linen bottom right corner) all very good- excellent.



### 80: 18th C FRENCH COURT DANCER BEDCOVER & PILLOWCASE, 1920s

USD 400 - 600

4 pieces Egyptian cotton w/ drawnwork & fine embroidery 18th C court dancer motif & monogram: 1 bedsheet, 71" x 101.5", (0.75" hole center, "HL" inked back right corner, pulls to edges), 1 bedsheet, 72.25" x 100.75", 1 narrow pillowcase, 22.75" x 36.5", (1" hole, 0.5" seam opening in insertion), 1 pillowcase, 23.25" x 36", 1 wider pillowcase, 23.25" x 35.5", (0.5" seam opening in insertion, pulls to edge), (all w/ light discoloration & tiny-0.25" holes) good.



### 81: ONE KNIT & ONE CROCHET BEDCOVER, LATE 19TH-EARLY 20TH C

USD 400 - 600

1 crocheted bedspread w/ integrated popcorn stitch star motif & integrated fringe on filet crochet border, 1920s-1950s 82" x 114", (messy tassels, 0.75" seam opening near 1 long edge & 1" short edge, small cluster of 0.5"-5" stains to center) good; 1 cotton knit bedspread w/ geometric coffered panels & diamond pattern border, late 19th C, 82.5" x 87", (few tiny pulls) excellent.



### 82: EMBROIDERED TABLE COVERING, EARLY 20TH C

USD 400 - 600

Table covering w/ exceptional hand embroidery in stylized exotic multicolor leaves & flowers, drawn thread work borders, plain weave cotton ground, probably Iberian peninsula, 61.5" x 90.5", (discoloration, tiny-0.5" stains, 1.25" stain 1 end) very good.



### 83: EMBROIDERED SILK BED COVERING, EARLY-MID 18TH C

USD 800 - 1,200

Satin stitch embroidered bed covering w/ flowering trees & fruit including pomegranates & peaches on yellow silk satin ground, hand quilted glazed cotton backing in diamond pattern, 62.5" x 68", (binding largely undone, shattering & repairs throughout silk, 9" x 13" area near center stained & discolored, some wear to embroidery, border remnants from probably blue silk taffeta backing)



### 84: SIX LEA STEIN BLACK & WHITE BROOCHES, PARIS, MODERN

USD 400 - 600

Five stamped "Lea Stein Paris?" on findings: 1 black & white layered pyramidal triangle, 1.75" x 1.5"; 1 large black & opalescent layered pyramid, 2.75" x 2.75" (light scratches & scuffs); 1 layered black & silver striped evergreen tree, 2.25" x 3.25", (light scuffing); 1 turtle w/ black, white & striped shell, 2" x 3.25" (glue residue on back); 1 turtle w/ white, grey & black striped shell, 2" x 3.25", (residue); 1 white & opalescent layered pyramidal triangle, 1.75" x 1.5", (unlabeled) all very good-excellent.

## Autumn Treasures For Your Closet



### 85: FIVE LEA STEIN FIGURAL & FLORAL BROOCHES, PARIS, MODERN

USD 400 - 600

All signed "Lea Stein": 1 Collarette Art Deco Lady brooch in shades of pink, white & cream, 2.25" x 2.25"; 1 Carolle Flower Lady brooch in shades of aquamarine, 1.75" x 2.25"; 1 Carmen Joan Crawford w/ pink hair & aqua blazer w/ royal purple confetti lapels, 2.25" x 1.75", (spot stain center CH); 2 Potted Flower brooches w/ snakeskin texture: 1 w/ blue flowerpot, 1.75" x 2"; 1 purple flowerpot, 1.75" x 2"; t/w unlabeled bows: 1 bronze/mauve, 2.75" x 2", (unlabeled); 1 cherry red, (unlabeled, 2" white stripe back), (all w/ light scratches & scuffing) all very good-excellent.



### 86: THREE CELLULOID PRISON RINGS, AMERICA, 1930s & 1940s

USD 400 - 600

1 ring w/ photo of woman, Wd 0.1875"-0.625", circ. 64 mm, size 10.75; 1 ring w/ photo of man, Wd 0.125"-0.625", circ. 55 mm, size 7.25"; 1 striped ring w/ "S" initial panel, Wd 0.25"-1", circ. 50 mm, (all w/ scratches & scuffing) all excellent.



### 87: FIVE SHULTZ & PANTTI BROOCHES, AMERICA, MODERN

USD 400 - 600

1 cherry red heeled Oxford shoe, signed "Shultz", 2" x 1.5", (light oxidization); 1 red hand w/ black & polkadot bangle, signed "Shultz", 1.75" x 3.75"; 1 cherry red heart attached to key, signed "Pantti", 2.25" x 3"; 1 green palm tree w/ black fronds & tropical sun, signed "Pantti", 2.5" x 3.5", (light discoloration, scratched where sun meets tree); 1 cherry red w/ inserted strands w/ heart & "Be Mine" plaque, signed "Shultz 2-02", 2" x 2.75", (all w/ light scratches) all very good-excellent.



### 88: TERESA & VINTAGE BANGLES, AMERICA

USD 400 - 600

6 signed "Teresa": 2 matching honey color w/ black dots, Wd 0.375", circ. 7.5", (lightly dirty); 2 matching matte black w/ row of small red dots, signed "Teresa", Wd 0.5", circ. 7.875", (heavy scuffing); 1 yellow translucent w/ recessed & painted dots to underside of shank for bubble polkadot effect, signed "Teresa", Wd 0.5", circ. 8"; 1 wide cherry red w/ small black dots, signed "Teresa", Wd 1.5", circ. 8", (worn, chipped); 5 unsigned: 1 red square bangle w/ yellow dots, Wd 1", circ. 7.875"; 3 matching black w/ grey & white squares, Wd 0.5", circ. 8", (few visible bubbles); 1 purple w/ pierced metallic overlay for polkadot effect, Wd 0.75", circ. 8", (tarnish, discoloration); (all w/ light scratches) all good-very good.



### 89: SHULTZ & VINTAGE CELLULOID BANGLES, AMERICA

USD 400 - 600

Wd range 0.25"-1", circumference range 7.5"-8": 1 w/ coral & grey marbled ovals on green base, signed "Shultz"; 2 matching thin blue marbled, signed "Shultz"; 1 thin w/ elliptical spots in coral, orange, lavender & green on green & blue marbled base, (all w/ light scratches & scuffing) 1 green w/ radius shank shaped into undulating wave, (discoloration on rims); 1 black & yellow marbled; 1 wide & 2 narrow rounded tan marbled vintage, all very good- excellent.



### 90: BRUCE PANTTI & J. EVANS BOWTIE BANGLES, AMERICA, MODERN

USD 400 - 600

2 Bruce Pantti multicolored bowtie bangles on black ground, signed "Pantti", Wd 0.5", circ. 8", (0.25" dark scratch to 1); 1 rainbow bowtie, signed "J. Evans", Wd 0.625", circ. 8.125", (sticky residue); 1 cream bowtie on blue ground, signed "J. Evans", Wd 0.625", circ. 8.125"; 1 pink checkerboard, signed "JHE", Wd 1.375", circ. 7.75", 1 yellow & cream checked, Wd 1", circ. 8", (all w/ light scratches & scuffing) all very good-excellent.



### 91: FIVE SHULTZ CARTWHEEL HAT BROOCHES, AMERICA, MODERN

USD 400 - 600

4 signed "Shultz": 1 large multicolored checkerboard w/ black crown & yellow bow, 3.25" x 3.25" x 1.25"; 1 yellow & black checkered w/ black bow & Scottie dogs, label "Shultz", 2.75" x 2.5" x 1.25", (discoloration); 1 red, green & yellow w/ red crown, 2.25" x 2.25" x 1"; 1 red, green & yellow w/ green crown, 2.25" x 2.25" x 1"; 1 black & red, 2.5" x 2.75" x 0.75", (metal oxidizing, 0.75" crack in brim, bow & band cracked & dirty) (most w/ light scratches & scuffing) all fair-excellent.

## Autumn Treasures For Your Closet



### 92: GENEROUS LOT MAHJONG & DICE GAME JEWELRY

USD 400 - 600

1 pair Mahjong tile earrings, 0.875" x 0.5" x 2.25", (dirty, scuffed & scratched, metal tarnish); 10 Mahjong tile or dice game bracelets, Wd range 0.5"-1.25", circumference range 5.5"-7.75", (some w/ stretched elastic, light scuffs & scratches) all very good- excellent.

---



### 93: SIX PAVONE GALALITH BROOCHES & BRACELETS, FRANCE MODERN

USD 400 - 600

Four signed "Pavone": 1 teal ombre cat brooch w/ arched back, 3" x 2", (shallow 0.25" chip inside legs); 1 orange to red ombre leaping cat brooch, 3" x 2.25"; 1 red on black moose brooch, 2.75" x 2", (glue smears back); 1 seated Holstein cow brooch, 2.5" x 1.5", (tail lightly worn, discoloration), (all w/ light scratches); 2 bracelets both strung w/ oversized marbled aqua trapezoidal plates & unsigned: 1 w/ purple cat face, Wd 1.5"-2", circ. 6.25"-9", (crazing on 3 blocks); 1 brown cat face, Wd 1.5"-2", circ. 6.25"-9", (crazing on cat back) all good-excellent.

---



### 94: FOUR PAIR ALLIGATOR OR LIZARD PUMPS, LATE 1940s-1960s

USD 400 - 600

1 pair brown pumps, late 1940s label "Bullock's Wilshire Collegienne", L 9.25", Wd 3", size 6.5, (0.75" divot center shank left); 1 pair oxblood point toe, late 1950s, label "Troylings styled by Seymour Troy", L 10", Wd 3.25", size 8, (lining worn, left insole detaching, creasing at vamp); 1 pair black faux lizard & suede, 1960s, label "de Vaniti Originals", L 9.5", Wd 3", size 7, (worn lining, heel points removed, 1" stain right lining, heel shanks detaching); 1 pair oxblood lizard sling-back pumps w/ studded ribbon vamp, early 1950s, label "I. Miller & Sons Inc. NY", L 9.5", Wd 3", size 8, (insole very worn, metal tarnished, stiff), (all w/ moderate sole wear) all fair-very good.

---



### 95: FIVE PAIR DAY & EVENING PUMPS, AMERICA, 1950s

USD 400 - 600

1 pair brown leather w/ bow to vamp & peep toe, 1950s, label "Polly Preston Combination Last Deluxe" L 10.25, Wd 3.5", size 9.5, (sticky residue left insole); 1 black patent leather w/ grosgrain & red patent piping, label "Andrew Geller Exquisite Footwear", L 10.5", Wd 3", size 9, (1" mark right heel); 1 pair black suede w/ peep toe, 1950s, label "Paradise Shoes? ?Lancaster Pa?", L 10", Wd 3", size 9; 1 pair pumps black lace brocaded on scarlet satin, late 1950s, label "Victoria Last Martinique Custom Made", L 9.75", Wd 3.25", size 7, (binding worn, insoles detaching); 1 pair brown suede pumps, c. 1950, label "Modecraft Charmers", L 9.25", Wd 3.25", size 7, (very worn, suede scuffs), (all w/ wear & scuffs, worn insoles & soles) all fair-good.

---



### 96: MOD MONDRIAN GO-GO BOOTS, c. 1966

USD 500 - 800

Vinyl Mondrian style mod go-go boot, Ht 10.25", Wd 3.25", L 11", size 8, (2.75" & 1.25" stains back left heel, zippers stuck, light stains & discoloration, scuffs to heels, worn, lining stained, shoe trees dirty & cracked) fair.

---



### 97: 18TH C REVIVAL EVENING SLIPPER, 1880-1890s

USD 400 - 600

1 pair silk brocade evening slipper w/ Louis heel & silk satin faux vest w/ 3 dome shaped glass buttons, Ht 5.5", Wd 2.5", L 9.75", (blue silk shattered & brocade worn, light wear to soles, steel cut beads at vamp oxidizing) fair; chine silk protective shoe bag w/ brass, wood & silk baubles, 10" x 19.5", (1 bauble detached & included, metal on baubles oxidizing/worn & fraying, silk shattering, 3" tear near bottom seam) good.

---



## Autumn Treasures For Your Closet



### 98: TWO PAIR BLACK JEWELED SHOE HEELS, 1920s

USD 400 - 600

Both wooden shanks w/ celluloid overlay decorated w/ rhinestones & brass beading: 1 pair heavily rhinestone encrusted heels, Ht 2.5", L 2.75", Wd .875"-1.75", (metallic settings tarnished, top pieces removed, wood dirty & lightly worn) very good; 1 pair rhinestone encrusted heels w/ starburst motif, Ht 3", L 2.625", Wd 1"-1.875", (top pieces separating & worn, scratched & scuffed, visible wood chipping) good.

---



### 99: 37 JOURNAL DES DEMOISELLES FASHION PLATES, 1860-1890s

USD 400 - 600

Large lot of hand color 'Journal des Demoiselles' plates, including seaside, children & accessories, all 7.75" x 11" x 1", 9 c. early 1860s, 12 c. 1870s, 10 c. 1880s, 4 c. early 1890s, France, (cover very worn & not attached to any plates, plates discolored, foxed, chipped & creased edges, pencil markings) all as is.

---



### 100: TWO GODEYS LADYS BOOKS, PHILADELPHIA, 1845 & 1861

USD 400 - 600

1 'Godey's Lady's Book', Volume XXXI, c. Colored plates for July-December, 1845, 6.75" x 10.5" x 1", (cover very worn & spine taped, discoloration & foxing to pages, chipped & creased edges, pencil markings, cover detaching); 1 'Godey's Lady's Book', 12 plates c. 1861, 6.5" x 9.75" x 2.75", (cover worn & detached, spine partially detached, yellowing & foxing to pages, light chipping & creasing) all as is.

---



### 101: TWO COMPLETE GODEYS LADYS BOOKS, PHILADELPHIA, 1854-56

USD 400 - 600

1 'Godey's Lady's Book' w/ 6 colored plates, c. July-December 1856, Volume LIII, 6.5" x 9.25" x 1.5", (cover worn & taped, pencil markings, yellowed & foxed pages, loose & chipped pages); 1 'Godey's Lady's Book' c/o 12 colored plates, c. 1854, Complete Volume XLVIII, 6.5" x 9.75" x 2.5", (cover worn, taped & front missing, yellowed, foxed & chipped pages, pencil markings) all as is.

---



### 102: ONE GODEYS & JOURNAL DES DEMOISELLES, AMERICA & PARIS

USD 400 - 600

1 'Godey's', c. 1867, Volume LXXV, 6.5" x 9.5" x 2.25", (missing colored plates from April & June, pencil markings, pages yellowed & foxing, minor chipping, some tape present); 1 'Journal des Demoiselles', May-December w/ colored plates, 1869, 7.75" x 11" x 1", (cover worn & taped, spine cracked, pages yellowed & foxing, edges chipped & creased, few torn & taped pages, pencil markings) all as is.

---



### 103: THREE COMPLETE WOOL DRESS GOODS SAMPLE BOOKS, 1891-1909

USD 400 - 600

1 sample book woolen dress good w/ each sample individually dated w/ month, sometimes day & year, label 'Faulkner M.F.G. Co. Dress Goods, August 1897- April 1900?', (cover worn, missing swatches, water damage, minor fraying & holes to some swatches, minor chipping); 1 sample book woolen dress goods, all date July- August 1909, ?Stanley Woolen Co. 1909 Styles', 14" x 11.75" x 3.25", (worn, missing swatches, water stains, discoloration, 0.5"-2" paint drips cover); 1 woolen goods sample book, 200+ pages, 'F.M. Co. 1891 Dress Goods', 15.75" x 10" x 4.5", (cover worn, water damage to pages, curling, tiny paint stains to spine) both as is.

---



### 104: PAUL & DENISE POIRET AUCTION CATALOG, PARIS, 2005

USD 400 - 600

Complete 2 part catalog of "La Création en Liberté: Univers de Paul et Denise Poiret, 1905-1928", Personal items of Denise & Paul Poiret, by Drouot-Richelieu on 10th & 11th of May, 2005, including mini cd, Vol. 1, 8.25" x 10.625" x 0.625", Vol. 2, 8.25" x 10.625" x 0.5", (covers lightly scratched, spine of Vol. 1 creased) excellent. From the Collection of Karen Augusta.

---

## Autumn Treasures For Your Closet



### 105: FOUR BONNETS & ONE PUMPKIN HOOD, 1850-1900

USD 400 - 600

1 light blue w/ ruffles, c. 1900, Ht 19", depth 14"; 1 black patterned silk pumpkin hood, 1860s, Ht 14", depth 11", (ties shattered, CB ribbon worn); 1 black & white cotton houndstooth w/ plain cotton pleated ruffle to brim, c. 1900, Ht 13", depth 11", (0.5" period patch repair back); 1 black silk w/ early machine chainstitch quilted patterned w/ brown velvet brim, 1850s, Ht 13.5", depth 9", (wear throughout, 1 ribbon tie torn, 1" of velvet trim missing at nape); 1 light indigo w/ lace trim & featherstitch embroidery, 1890s, Ht 10", depth 12", (sun fading), (most w/ general wear, discoloration &/or stains) all fair-very good.



### 106: TWO EARLY BONNETS, 1820-1830

USD 400 - 600

1 horsehair & cotton bonnet composed of narrow woven bands of horsehair w/ decorative triple row undulating zigzag surface motif, 1820s, Ht 10", depth 12", (ribbons later addition, light fraying, seam openings, discoloration, pulls) very good; 1 white cotton mull & ribbed pique, 1820-1830, Ht 9.26"-18.5", depth 11.5", (light discoloration, few tiny-0.25" spot stains, ties replaced at later date) excellent; t/w 1 grey, green, blue & brown printed pattern on black cotton ground, 1920s, Ht 7.5"-11", depth 9.5"



### 107: THREE DECORATIVE BONNETS, 1870-EARLY 1890s

USD 400 - 600

1 purple silk velvet w/ brim of double serpentine band of braided straw & chenille, silk velvet blossoms & pressed velvet leaves, purple velvet back puff, satin faced ribbon tie, 1880s, label "E.H. Fielding & Co.", 8.5" x 9" x 4", (lining shattered, ties worn, elastic added, flowers lightly worn/crumpled) very good; 1 woven black straw late stage mourning bonnet w/ polished jet beading, wire frame interlaced w/ braided straw loops & braided horsehair at brim & across back, 1870s, 7"x7"x4", (loops at crown partially detached, wear to straw, lining & ties shattered) very good; 1 black horsehair & silk net w/ pink & peach velvet, painted & gilded florals & leaves, 10" x 10" x 3.5", (ties shattered & worn, florals worn, net disintegrating, misshapen) good.



### 108: FIVE DECORATIVE CLOCHES, 1920s

USD 400 - 600

1 natural straw bonnet style w/ pink ribbon, modified in 1920s, Ht 9", (ribbon & lining lightly worn); 1 black silk satin asymmetrical w/ woven straw, circ. 22.25", size 7 1/8, (straw worn, 4.5" seam opening trim); 1 light brown fur felt w/ pierced work, double silk grosgrain ribbon, circ. 22", size 7, (misshapen, buckle damaged, ribbon worn); 1 sage green bonnet style w/ twisted satin ribbon & ombre dyed pressed velvet flowers, Ht 9", depth 8.5", (stiff & lightly discolored, trim detaching, few tiny spot stains); 1 brown fur velour w/ ombre orange top stitching & side buckle, circ 26", Ht 6", Size 6 5/8, (misshapen, buckle worn, lining shattering) all good-excellent; t/w blue woven raffia, label "Reslaw, Made in London"



### 109: FOUR MID CENTURY COCKTAIL HATS, PARIS & NY, 1940-1960s

USD 400 - 600

1 brown feathered cyclone turban, label "Marta-Ateljen Goteberg, Made in Paris", circ. 21.75, Ht 7", size 6 7/8, (bent & broken feathers, tiny-0.5" glue spots crown); 1 w/ trimmed coche feathers atop a petaled cage, 1950-1960s, crown Wd 5.6", Ht 10", (worn/torn feathers w/ some bent/ broken spines); 1 brown velvet dome topped & rimmed w/ brown silk satin, label "Rivera, Gus Meyer Co. Ltd", circ. 20.25", Ht 6", (few tiny-0.5" marks); 1 black fur felt mini stove pipe babydoll w/ redfeathered brim & nose veil, label "Lucila Mendez Exclusive New York", brim Wd 9", Ht 5.5", (net worn & torn at edge, light feather wear) all good-excellent.



### 110: FOUR MID CENTURY DAY HATS, AMERICA & DENMARK, 1940-1960

USD 400 - 600

1 black sheared fur lidded mushroom hat w/ black double faced ribbon to crown w/ bow at CB, label "Toni Leslie", crown Wd 6"-7", Ht 3.5", (shedding, brim lightly worn & w/ crushing, misshapen); 1 brushed black & cream fur felt sculpted swill, label "Dajon Original NY", circ. 21", Ht 5", size 6 5/8, (light wear); 1 black brushed fur felt flower top cloche, label "Susanne Juul", circ. 20.75", Ht 7", size 6.5, (slightly misshapen); 1 burgundy satin & navy velvet draped toque, label "Christine Original", circ. 22.5", Wd 9", size 7 1/8, (small stains to satin, glue on band) all good-excellent.

## Autumn Treasures For Your Closet



### 111: TWO BALMAIN & ONE COUTURE GIVENCHY LADIES HATS, 1960s

USD 400 - 600

1 black hat veiling & net beehive, label "Balmain, Paris", circ. 22.5", L 10", Wd 9", Ht 9", size 7 1/8, (few broken bristles) excellent; 1 white leather couture dome hat w/ band & stylized leather toggle to CF, over straw base, label "Givenchy, Paris" & w/ couture tape # '24377', circ. 20.5", Ht 5.5", size 6.5, (crown creased & w/ misshapen areas, light stains & scratches) good; 1 black silk organza draped balloon hat, label "Balmain, Paris", circ. 22.75", L 11", Wd 10", Ht 6", size 7.25, (slightly misshapen)

---



### 112: SEVEN UMBRELLAS, MID-LATE 20TH C

USD 400 - 600

L range 27.5"-33.5", canopy diameter range 33.5"-52": 1 w/ orange plastic dots, (melted spots in canopy & 2" tear, doesn't fully extend, warped); 1 black w/ floral underside, (doesn't latch); 1 pink to red ombré, (doesn't fully extend, paint stains); 1 red w/ abstract pattern, L 27.5", (wear & scratches); 1 pink, purple & orange patterned, (inner canopy fraying); 1 black w/ bone handle, (runner cover fraying, 1.75" crack in handle); 1 cheetah, label "Création P.P. Paris, Niche Models Déposé", (doesn't latch, stained), (all w/ metal tarnish, general wear/stains/discoloration) all fair-good.

---



### 113: ONE COURREGES & SIX UNLABELED UMBRELLAS, MID- LATE 20TH

USD 400 - 600

L range 29.5"-35", canopy diameter range 36.5"-48": 1 red & black leather, (vinyl seam on handle split); 1 pale purple w/ blue handle, (unable to open fully); 1 tan w/ black handle, (1.25" crack in handle); 1 tan w/ metal handle, (unable to fully open, 4.5" tear on canopy edge); 1 w/ yellow polka dots; 1 light blue cotton, label "Courrèges Parfumes Paris", (fabric pilling); 1 black w/ loop handle, (4"-15" tears on canopy); 1 peach & brown ribbon patterned, (broken plastic at ferrule), (all metal tarnish/wear & w/ general wear/stains/discoloration) all fair-good.

---



### 114: FOUR LACE PARASOLS, EARLY 20TH C

USD 500 - 800

1 lace w/ fringe, L 26", diameter 22" w/ 6" fringe, (messy fringe, handle dirty, nose cap cracked); 1 large cream embroidered net, L 33", diameter 40", (handle & end cap broken, handle & ferrule dirty); 1 cream lace w/ curved & broken handle, L 27", diameter 28.5", (end cap broken, dirty & cracked, lining shattered & won't open entirely); 1 black lace, L 25", diameter 26", (lining shattered), (all w/ metal/runner tarnish) all fair-very good.

---



### 115: THREE ENAMELED VANITY BOXES, GERMANY & ENGLAND, 1930s

USD 400 - 600

1 sterling green enamel box rose w/ buds & leaves on guilloche ground & borders, stamped "Sterling Germany", 3.25" x 3.5" x 1.25", ("XVIII" etched inside, lightly dirty); 1 Bohemian cut flash glass w/gold tone lid set w/ blue paste brilliant & faux pearls bezel set on sapphire blue guilloche ground, 3.75" x 3.75" x 2.5", (0.5" sticker residue at base, lightly dirty); 1 sterling peach enamel box w/ stylized lily motif & pendant drops containing Greek dancers, stamped "Sterling" & w/ British hallmarks, 3" x 3" x 1.25", (light variations in color, inside dirty), (all w/ metal tarnish & light scratches & scuffs) all very good.

---



### 116: POWDER BLUE GUILLOCHE ENAMEL DRESSING SET, LONDON, 1933

USD 400 - 600

Hallmarks: "RC" maker mark, London city mark, Gothic upper case "S" indicating made in 1933: Wd range 0.25"-4.5", L range 3"-11.75": 1 hand mirror w/ Baroque frame & beveled mirror, (mirror facing tarnished, small chips to edges of enamel), 2 oblong bristled clothes brushes, (bristles worn, bent & broken, wood base worn), 1 hairbrush, (bristles worn, bent & broken, wood base worn, dent in handle), 1 perfume bottle, (lid warped, enamel chips, interior dirty), 1 cut glass vanity jar, (interior dirty), 1 tortoise shell comb, (broken tines) (all lightly scratched & w/ tarnished metal) all fair-excellent; t/w 1 bakelite tool w/ enamel end in box, label "Carl Haebler, Interlaken".

---

## Autumn Treasures For Your Closet



### 117: IMITATION IVORY TRAVELING BOUDOIR SET & CASE, 1930s

USD 400 - 600

Monogrammed traveling toiletry accessories kit, Wd range 1"-16.75", L range 0.125"-11.5": 1 monogrammed case w/ wooden grained textured canvas border, label "Excello XLO Ivortone", (water damage to corners, tiny stains), 1 bristle brush(broken bristles, hair), 1 comb, set of manicure tools including scissors, files, tweezers & cuticle groomer, some stamped ?Germany?, (some w/ scratches/ wear); 1 large jar, (handle missing, discoloration & spot stains, 1 tiny container, (0.75" crack, tiny spot stains), 1 rectangular box, (discoloration & tiny stains), 1 hand mirror, (backing lightly damaged), 1 nail buffer, label "Ivory Py-ra-lin", (tiny spot stains), (most w/ scratches/scuffs) all fair-excellent.



### 118: TWO EUROPEAN PAISLEY SHAWLS, 1845-1860

USD 400 - 600

1 scarlet ground w/ borders of carefully composed of elements found in traditional Kashmir shawls, probably Scottish, 62.5" x 133" w/ 4" fringe, (messy fringe, tiny holes, small repairs, large lightly discolored areas & scattered spot stains) good; 1 w/ large black ground w/ multiple boteh motif borders & woven imitation gate border, possibly Norwich, 65.75" x 65.5", fringe 3.25", (scattered tiny holes to center panel, messy fringe) very good.



### 119: WOVEN PAISLEY SHAWL, FRANCE, c. 1867

USD 400 - 600

Paisley w/ architectural border & tracery motif w/ undulating botehs & geometric patterns, symmetrical on both axis, 63.5" x 131.5" w/ 3" fringe, (messy fringe, light wear, few tiny-0.5" holes) very good-excellent.



### 120: WOVEN WOOL PAISLEY SHAWL, 1860s

USD 400 - 600

1 square predominately red paisley w/ black center, typical motifs w/ multiple borders, English or Scottish, 73.5" x 74.5" w 1" fringe, (11.5" repair 1 edge, 0.5" moth hole, messy fringe & some missing) good.



### 121: TWO EUROPEAN PAISLEY SHAWLS, 1850-1860s

USD 400 - 600

Both jacquard woven: 1 paisley shawl w/ Mogul influenced design, stylized boteh, black center, 63" x 69.5", (13.5" T shaped repair center, 6.5", 11" & 15" poor repairs 1 edge, wear holes); 1 striped paisley shawl, probably Nimes, 59.25" x 114.5", (edges frayed & missing fringe, wear, tiny-4" holes & tears) both fair.



### 122: SILVER ASSUIT SHAWL, EARLY 20TH C

USD 400 - 600

Black ground w/ silver assuit shawl, 38" x 86", (tarnished & oxidized metal scales, pulls at edges, 0.5" hole, 1"-6" strips of tarnish) fair.

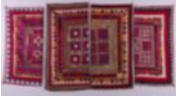


### 123: CEREMONIAL KUBA TEXTILES, DEMOCRATIC REPUBLIC OF CONGO

USD 500 - 800

Both w/ embroidery, appliqué, openwork & w/ geometric motifs: 1 dark & medium brown length of raffia edge finished w/ miniature raffia pompoms, 25" x 127", (wear & discoloration, tiny-1" holes esp. at edges of openwork); 1 dark brown, tan & red/brown length of raffia, 29" x 150.5", (wear esp. at edges, fading & discoloration, many pulls) both very good.

## Autumn Treasures For Your Closet



### 124: FOUR CANOPIES OR HOUSEHOLD HANGINGS, GUJARAT, MID 20TH

USD 300 - 500

All embroidered in geometric patterns & w/ Phulkari embroidery & mirror work: 1 w/ 9 square center & large center mirror, 39.75" x 39.5", (light stains/discoloration); 1 w/ 9 square pattern & open center squares, 42" x 40.75", (holes & wear to backing, small pulls); 1 w/ 4 square center & magenta center mirror, (4" blue inking to 1 edge); 1 w/ 9 square center pattern & embroidered flowers, (3" torn binding 1 corner), (all w/ wear to embroidery, general wear & mirror damage/tarnish/missing) all fair-good.



### 125: THREE HOUSEHOLD HANGINGS, GUJARAT, EARLY-MID 20TH C

USD 400 - 600

All embroidered & w/ mirror work: 1 large Phulkari embroidered hanging w/ 7 heavily mirrored tabs, open ladder stitch embroidery, early 20th C, 53" x 34", (tiny-0.5" holes); 1 pink & red embroidered hanging w/ birds, flowers & cows, w/ recycled 19th C tabs embroidered w/ mirrors, sequins & beads, 44.75" x 21", (missing sequins); 1 large square hanging w/ magenta Phulkari embroidery, 44.5" x 44.25"; (all w/ embroidery wear, damaged/tarnished mirrors, general wear, stains & discoloration) all fair-good.



### 126: PERSONAL & CEREMONIAL TEXTILES, INDIA & CHINA

USD 400 - 600

19th-mid 20th C: 1 child's choli w/ marash & ketch mirror work embroidery, CH 31", L 19.5", (light wear, minor mirror damage, 2.5" stain left back & 2.25" front, staples, no CB closure, 2" seam opening left side); 1 Chinese mans hat composed of repurposed 19th C embroidered bands & ribbons w/ couched gold thread embroidery & architectural design on crown, Ht 3", circ. 20", (embroidery worn, tarnish, binding edge shattered, wear); 1 Indian mans hat w/ embroidery & mirror work on black ground, Ht 4", Circ. 18.5", (1.5" tear to brim, mirror panels damaged, wear); 1 canopy w/ silk & cotton embroidery & mirror work in elephant & floral motifs on brown plain weave cotton ground, 43.5" x 51.5", (wear to embroidery, worn & missing mirrors, pulls) all fair-good.



### 127: SILVER & GILT EMBROIDERED WEDDING DUPATTA, INDIA, 20TH

USD 300 - 500

Sheer red silk w/ silver, gilt & bullion embroidery w/ faceted sequins, pearlized beads & paste emeralds, edged w/ silver fringe, 41" x 96", (fringe messy & very worn, wear & tarnish to embroidery, 3.5" repair near center, 5" repair, 2 holes where panels join) good.



### 128: GENEROUS LOT OF METALLIC GLANDS, LATE 19TH-EARLY 20TH C

USD 300 - 500

Used for drapery & upholstery in various types of metallic threads including silver, gold & bronze, size range 1"-5" x 0.25"-1.75" x 0.25"-1.75", (some tarnish & fraying to bullion) all very good- excellent.



### 129: LARGE LENGTH CHINE SILK TAFFETA, 1910s

USD 400 - 600

Chine lozenge & band motif on cream & blue striped silk taffeta ground, Wd 20", L 16+ yards, (raw ends) excellent.



### 130: SALVADOR DALI SCREEN PRINTED TEXTILE, AMERICA, 1956

USD 500 - 800

Length of screen printed undid cotton w/ erotically confronted & addorsed horse motif, fire bursts & abstract trees, printed Dali signature, selvedge ?A Salvador Dali Original, Copyright 1956, Barpan Fabrics Inc.", Barpan fabrics incorporated Jan. 1956, Rhode Island, Wd 36.5", L 107.5", (cut ends raw, iron content in black dye causing weakening of fabric) fair.

## Autumn Treasures For Your Closet



### 131: SIX REGIONAL APRONS, EASTERN EUROPE, MID 20TH C

USD 300 - 500

1 w/ broche floral & fowl stripe motifs in cotton & wool on weft faced wool ground, Banjara Croatia, 17.5" x 34", (no ties); 1 w/ weft face cotton ground w/ stepped tapestry woven motifs in cotton & silk crocheted edge, Romanian, 14.75"x32"; 1 w/ couched work, chainstitch, metallic braid, galloon & openwork spiral stitch edging on heavy black wool ground, Sarakatsani people, Balkans, Wd 15", L 17.5", (lamé tarnished, 1 tie cut); 3 woven in floral bands pearl cotton on 4 harness loom w/ embroidered faux pockets at W, Sumiac Slovakia: 1 w/ large florals & fringe, Wd 12.5", L 23.5", (ties cut), 1 w/ horizontal leaf motif, Wd 10.75", L 27.5", (tack top); 1 white w/ black, Wd 10.75", L 27", (5.5" missing fringe), (most w/ wear & stains) all good- excellent.



### 132: 2 REGIONAL VESTS & 5 APRONS, ROMANIA & SLOVAKIA, 20th C

USD 400 - 600

1 sheepskin vest w/ black embroidery & inlaid velvet, embroidered name on faux front pockets, Sibiu, Romania, B 38", L 21", (metal oxidizing); 1 twill cotton canvas vest w/ wool floral & rows of cross stitch embroidery & worked border bands, Suceava Romania, B 42", L 24.5", (2" stain to lining); 5 handwoven indigo dyed aprons w/ wool & cotton embroidery, extended ribbon ties, early-mid 20th C, Vazec Slovakia: 1 w/ bright blue & white ties, Wd 27", L 27", (0.5" stain left tie); 1 w/ butterfly-like, Wd 25", L 27.5", (pulled stitches W); 1 w/ pale blue & white ties, Wd 26.5", L 27", (wax drips); 1 w/ floral stitch & black & white ties, Wd 26", L 27"; 1 w/ leaf stitch, Wd 24.5", L 27.5", (all w/ cut tassels, wear & spot stains) all very good-good.



### 133: REGIONAL DRESS & APRONS, SLOVAKIA, EARLY-MID 20TH C

USD 400 - 600

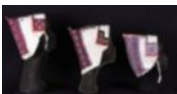
1 girl's dress w/ merino embroidered patterned silk Sarafan style bodice w/ glass buttons, printed wool challis stitched pleated back panel, Vazec Slovakia, mid 20th C, CH 33", L 37", (no SH closures, spot stains left CH, light wear, 1.25" tear to CF piping opening) good; 1 white regional apron w/ red & black woven bands, Wd 21", L 22.75", (stains W band, light fraying); 3 indigo resist print aprons w/ original pleating not let out, Zavadka Slovakia, late 19th-early 20th C: 1 w/ red & white ties, 6.5"-9" x 30.25", (ties fraying), 1 w/ red & blue ties, 6.5"-9.5" x 30.5", all aprons good- excellent.



### 134: FIVE REGIONAL APRONS, SLOVAKIA, MID 20TH C

USD 300 - 500

5 aprons, Hel'pa Slovakia, mid 20th C: 1 multicolored w/ geometric & floral woven stripe, 2 horizontal box pleats, silk brocade inset w/ machine quilting, lace ruffle edge, Wd 18.5", L 22.5"; 1 white cotton w/ red & multicolor silk horizontal woven stripes, 3 box pleat panels overstitched w/ leaves & blossoms, mm lace trim, Wd 24.5", L 26.5", (lace trim worn & discolored); 3 white cotton w/ lace ruffles: 1 white w/ pale pink & cream w/ machine embroidered, Wd 18.5", L 21", (tiny-0.25" spot stains); 1 white silk on white embroidery w/ drawn thread lozenges, Wd 17", L 24", (tiny-1.25" holes in trim, tiny spot stains), 1 white w/ blue hand & machine embroidery & white lace trim, Wd 19", L 22.5", (all w/ discoloration & wear, small pulls) all good-very good.



### 135: 3 EMBROIDERED FOLK BONNETS, ZAVADKA SLOVAKIA, MID 20TH

USD 300 - 500

3 traditional regional bonnets hand embroidered in primary cross stitch w/ symbols, devises & patterns to indicate wearer's social status in terms of marriage & family, CB highly embroidered & w/ highly stylized section of smocking to add structure at CB: Ht range 9"-10", depth range 7"-9", (all w/ light wear & minor discoloration, some fraying edges, 1 w/ broken channel at nape) all good-very good.



### 136: FOUR EMBROIDERED FOLK BONNETS, SLOVAKIA, LATE

USD 400 - 600

4 bonnets based on Renaissance prototype w/ early 19th C influences, all w/ drawstring to gather at nape: 1 pink & red w/ elaborate drawn thread work & Corelli machine embroidery, 1 plain cotton ground w/ multi-color bobbin lace forebrim, woven headpiece in weft geometric pattern, elaborate smocking & Schiffli lace at nape, 19th C, 1 white w/ embroidery & drawnwork, 1 pink & red cross stick embroidered w/ bobbin lace, paillettes, sequins & beads, Hel'pa Slovakia, late 19th-early 20th C: Ht range 8.75"-10.5", depth range 13"-16.5", (general wear & discoloration) all very good-excellent.

## Autumn Treasures For Your Closet



### 137: 2 REGIONAL EMBROIDERED WOOL VESTS, GREECE, 19TH-20TH C

USD 500 - 800

1 entirely hand sewn heavily felted wool w/ fine scarlet wool broadcloth edgings at CF, hem & inserted at underarm, metallic silver inserts encircled w/ soutache & cording in vegetal motifs at either side of CF & in flared motif w/ braid embroidered detail at SS fanning from underarm w/ pseudo military lacing, Attica Greece, 19th C, CH 36", L 33.5", (small holes, stains/dyscoloration, wear, 0.75" repair left underarm) good; 1 cream heavily felted wool w/ front plastron of wool cording in elaborate pattern edged w/ black wool, slit pocket on right side, back panel w/ flared gussets elaborately trimmed w/ rows of wool braid, cording & velvet ribbon, Florina/Greek Macedonian, late 19th-early 20th C, CH 31", L 32", (wear, small holes) very good.



### 138: LADIES REGIONAL COSTUME, MYJAVA SLOVAKIA, MID 20TH C

USD 400 - 600

7 piece woman's costume, Myjava Slovakia, mid 20th C: 1 blouse, B 75", L 17.5", (stains W & hem, underarms worn), 1 white pleated skirt, W 25"-48", L 26.5", (pulls to gather strings at W, ties fraying), 1 black overskirt, W 30", L 27", (fraying & wear at W band), 1 vest, B 39", L 16.5", (SS's taken in & let out, metallic trim top pocket missing), 1 bonnet, depth 12.5", Ht 13", (small repairs hem), (most pieces w/ small spot stains) good.



### 139: LOUNGING SET & KIMONO STYLE ROBE, 1920-1930s

USD 400 - 600

1 lavender & yellow silk chiffon devore velvet lounging set in chinoiserie floral motif w/ silk satin borders, lined in yellow silk crepe, matching trousers, 1930s, robe B 38", L 29", trouser W 37", L 36", inseam 26", (shattering to collar/lapels & left cuff, 1.25" stain front left SH, tiny-1" stains trousers esp. to seat & above cuffs, tiny-0.25" scuffs to satin) fair; 1 pale pink embroidered Chinese export canton robe, silk crepe ground w/ large embroidered roses & buds in cream & pink, double ribbon neck edging, lined w/ pink crepe de chine, 1920s, B 50", L 44", (wear & pulls, esp around seams & SH blades, 4.5" stain right cuff, stains left cuff, tiny holes & spot stains) good.



### 140: TWO COTTON BEDGOWNS, LATE 19TH -EARLY 20TH C

USD 400 - 600

1 entirely handmade w/ crochet bodice & Heilmann embroidered bands for ribbon insertion, late 19th-early 20th C, B 36", L 58", (ribbons missing at SHs & around B, tiny dark stains right SS knee level) excellent; 1 cotton w/ square lace yoke w/ double hem stitched band at both edges w/ hand tucking at bodice, borders, sleeves cartridge pleated at SH w/ tucks, hem stitching & lace insertions & edging, late 19th C, B 42", L 54", (4 pinholes right B near SS, lace beginning to fray at cuffs, tiny spot stains, 0.75" stain left cuff, ribbon missing at neckline) very good.



### 141: TWO COTTON EMBROIDERED CHEMISE, 1850-1860s

USD 400 - 600

1 cotton w/ hand embroidered heavy whitework on yoke & edge of short gusset sleeve, embroidery probably professional work, 1860s, B 50", L 40.5", (laces not original) pristine; 1 entirely handmade w/ Madeira embroidery & exceptional thread work insertions, monogram, ribbon eyelets around neckline, 1850-1860s, B 48", L 50", (light fraying to scalloped edges, neckline & cuffs, missing neckline ribbon) excellent.



### 142: LADIES GYMNASIUM SUIT, CHICAGO, 1910s

USD 400 - 600

Midnight navy wool pleated gym suit w/ elasticized integrated knickers, anchor motif SS & SH button closure, self belt w/ single button, label ?E.R. Moore Co., Gymnasium Apparel, Dakin St. Chicago?, B 36", W 36", L 40.5", inseam 10.5", (2 tiny holes left SH blade, 0.25" hole left cuff, 1.25" hole seat) very good.

## Autumn Treasures For Your Closet



**143: TWO LADIES GYMNASIUM SUITS, LOS ANGELES, 1910s**

USD 500 - 800

1 midnight navy cotton twill bloomer gymnasium ensemble w/ attached skirt, linear geometric soutache & novelty braid appliqué to neckline, W band & hem, B 57", W 30", L 45", inseam 12.5", (light wear & minor pulling, many tiny-0.25" holes across back); 1 black cotton twill w/ drop front neckline, single patch pocket at B, attached W band w/ double button pincher at either side of W, integrated bloomers, label "Myers MFG Co. Inc. Los Angeles 'Winner' Gym Suit, Pat 4-11-11?, B 42", W 29", L 46.5" inseam 11.75", (light wear & minor pulling, tiny-1.25" holes lap, 1.5" hole right cuff) both good.

---



**144: THREE DEADSTOCK BATHING SUITS, AMERICA, EARLY 1950s**

USD 400 - 600

2 suits from Truman's Drug Store, Brainbridge, NY: 1 blue w/ peekaboo blue & white striped insert w/ buttons & button on halter strap, w/ manufacturer tag ? National Knitted Outerwear Associate?, B 30"-36.5", W 29"-35.5", H 34", L 23", (zip & pull oxidizing) excellent; 1 beach umbrella print treated cotton w/ halter strap, elasticized ?puckerette? side & back W & vertically ruched bands either side of CF, green B insertion & piped W, B 26"-35", W 22"-30", H 44", L 24", (tiny spot stains) very good; 1 cotton white & turquoise w/ pink & blue flowers w/ ruffled & tabbed B, elasticized ?puckerette? back W, button on halter strap, B 26.5"-32", W 20.5"-30", H 44", L 21", (minor pilling at seat, 0.25" stain to lap) very good.

---



**145: TWO DEADSTOCK BATHING SUITS, AMERICA, EARLY 1950s**

USD 500 - 800

Both red Rayon blend w/ convertible halter strap & manufacturer tag ? National Knitted Outerwear Associate?: 1 w/ plaid scarf drape, 1950s, B 33"-35.5", W 24"-26", H 30", L 23", (bodice lining stained); 1 w/ waffle weave white & red polka scarf drape, 1950s, B 28"-32", W 22"-24", H 30"-32", L 22", (tiny spot stains) both very good-excellent.

---



**146: EARLY BONNIE CASHIN DAY DRESS, AMERICA, c. 1940**

USD 400 - 600

Short sleeve shirt dress w/ shaped gathers for fullness over B w/ self tab, narrow W band w/ attached self tie at CF, box pleated skirt, CF button closure, label "Bonnie Cashin Design", B 38", W 25", L 45", (label detaching, stitches holding up right cuff undone, few tiny spot stains) very good-excellent.

---



**147: TWO PLAID IRENE SKIRT SUITS, AMERICA, 1950-1955**

USD 400 - 600

2 pc black & brown plaid on tan ground, double breasted cropped jacket w/ wooden buttons & applied bias cut yoke border, self edged fitchet pockets, faux wrap matching skirt, c. 1955, label "Irene, Exclusively for Fichtenstein's Corpus Christi Texas", B 40", W 37.5", L 21", skirt W 29.5", L 28.5", (buttons scratched, pull CF skirt, 0.5" repair above right knee) very good; 2-pc brown & black gingham check skirt suit, double breasted jacket w/ notched collar, double faux pocket flaps at left B & right H, matching skirt w/ triple box pleat at CF, 1950-1953, label "Irene!", B 42", W 31", L 27", skirt W 29.5", L 30", (1 tiny hole right of CB & 1 left CB skirt, visible hem stitches CF) very good.

---



**148: TWO BONNIE CASHIN SUEDE SKIRT SETS, AMERICA, 1952-1970**

USD 400 - 600

2-pc brown suede skirt set, blouse w/ Western shaped yoke & complimentary patch pockets, 3 faux pearl buttons at CF, back lined & w/ attached ascot type collar in pink polka dot twill silk, 1952-1953, B 42", L 24"-26.5", skirt W 27", L 29", (wear to skirt CB below W, light general wear) very good- excellent; 2 pc tan suede tunic jacket w/ triple paired inset pockets & CF faux MOP snap closures & matching flared skirt, 1965-1970, label "Sills, a Bonnie Cashin Design", B 40.5", L 30.5", skirt W 28", L 25.25", (worn at collar, underarms, seat & lap, tiny spots stains & 2 tiny holes in lining around neck & SHs) good.

---



## Autumn Treasures For Your Closet



### 149: TWO BONNIE CASHIN CASHMERE DRESSES, AMERICA, 1960s

USD 400 - 600

1 hooded camel colored cashmere dress w/ beehive pockets set into SSS, label "Bonnie Cashin Design", B 35"-42", L 57", ( tiny repair at left cuff, 0.25" repair above hem at CB, light 0.75" spot stain at back left knee) very good; 1 tan & cream Pierrot inspired mi-parti cashmere dress in cream & café au lait w/ deep narrow stripe turtleneck, label "Bonnie Cashin", B 35"-42", L 50?, excellent.



### 150: TWO BONNIE CASHIN WOOL JERSEY DAY DRESSES, 1960s

USD 400 - 600

1 chartreuse knit dress w/ inset beehive pocket, extended tabbed convertible turtleneck edged w/ suede & MOP snaps, label "Sills a Bonnie Cashin Design", B 40"-44" L 40", (suede trim worn, two 0.25" spot stains right SH, scattered small holes around hem, belt missing, tiny spot stains) good; 1 olive knit dress w/ leather bound round neckline & CF opening w/ grey faux MOP snap closures, B 40", L 42?, (0.5" seam opening left SH) very good-excellent.



### 151: THREE COCKTAIL OR DAY DRESSES, AMERICA, 1940-1950s

USD 400 - 600

1 black cotton voile dress, 3 CF button closures, spaghetti strap belt (not original) bodice & pleated skirt, label "Lord & Taylor Parisiennes", B 35", W 25.5", L 40.5", (scattered pulls, closure detaching); 1 changeable midnight navy synthetic faille cocktail dress w/ sweetheart neckline edged in black mesh, 3/4 length sleeve w/ wide open flared cuff, narrow self belt, wide attached hem flounce w/ paired double row of cording, B 39", W 28", L 47.5", (belt buckle worn); 1 black w/ framed sweetheart neckline, long sleeve, graduated horizontal tucks at CF lap, narrow self belt, label "Aywon Originals" & "Jule Straus Danville", B 41", W 26", L 49", (belt not original & stiff, spot stains B, 1" tear right SS W, underarm wear) all good-excellent.



### 152: TWO SKIRT SUITS, AMERICA, 1950s

USD 300 - 500

3-pc grey heather twill wool skirt suit, jacket w/ CF self covered buttons, inset H pockets & shadow blossom printed silk collar reverses, cuffs & lining w/ matching blouse, hand painted MOP buttons, straight skirt w/ front kick, label "Ben Daniels, West Tanglewood, NJ", B 37.5", W 32", L 23.5", skirt W 26", L 30.5", blouse B 37", W 30", L 22", (seam open right underarm, small holes, blouse SLVS shattering, 2" stain left B, 1.25" & 3.75" stains right side) good, blouse fair; 1 black silk shantung w/ short sleeved flared jacket w/ chartreuse shawl collar & elbow cuffs edged w/ B&W polka dot, self covered CF buttons, straight skirt, label "Dorothy Hale, Englewood", B 41.5", W 29", L 21.5", skirt W 26", L 28", (undone tacks, 2 closures detached) excellent.



### 153: ADRIAN TWO PIECE SKIRT SUIT, AMERICA, c. 1950

USD 1,200 - 1,500

2-pc wool skirt suit c/o complex inlaid geometric tailored jacket w/ shirt collar lapel, CF self tie at neck & W w/ inset diagonal slash pockets, glove length sleeve w/ 4 applied floating tabs & underarm geometric tailored insets, straight skirt w/ single wide box pleat & inlaid horizontal button tab at right thigh, jacket lined in peach silk crepe, label "Adrian Original", 1940s, B 43", W 35", L 22", skirt W 28.5", 26.25?, pristine.



### 154: CLAIRE MCCARDELL SUMMER DRESS, AMERICA, EARLY 1950s

USD 400 - 600

Pink cotton w/ satin weave stripe over printed w/ purple & pink pear sprig, semi-bias cut shaped bodice w/ CF brass hook closures, CB diagonal attached bands to worn as short sleeve & tied in bow at CB, attached gathered full skirt w/ inset deep pockets anchored to W, label "Claire McCardell Clothes by Townley, A Bate's Fabric", B 29", W 25", L 40", (1 loose snap, CF clasps scratched & tarnished) excellent.

## Autumn Treasures For Your Closet



### 155: DIOR COUTURE DAY DRESS, LONDON, 1952-1954

USD 500 - 800

2-pc black silk satin dress c/o partially boned bodice w/ princess seam darts, shawl collar, CF self-covered dome button closures, elbow length cuffed sleeve, complex box & knife pleated skirt, attached narrow w/ double flat box at CB, label "Christian Dior, Made in England by C.D. Models London Ltd. #06636", 1952-1954, bodice B 43.5", W 30", L 22", skirt W 30", L 33", (tiny-0.25" pulls/scuffs to satin around W & seat, 0.25" stain left lapel, net underlay fraying, structural portion of lowest CF button missing, small stains to left skirt SS & hem, CB loop closures missing) fair.

---



### 156: OMBRÉ SILK SATIN EVENING GOWN, STOCKHOLM, 1950s

USD 500 - 800

Brown ombre silk evening gown w/ fitted, boned bodice, horizontal neckline & wide SH straps, attached box pleated tulip shaped wrap skirt in ombre brown to cream silk, hem pulled into tabbed left H drape, zip closure at left SS, complete crinoline understructure, label "A.B. Nordiska Kompaniet, Stockholm", B 34.5", W 25.5", L 58.5", (paint on zip pull chipping, pulling, missing & repaired stitches where SH straps meet bodice, pulls to satin)

---



### 157: LANVIN BY MARIA CARINE WOOL COAT, PARIS, 1950-1960s

USD 400 - 600

Dark green cashmere faux double breasted coat w/ convertible collar, diamond pieced CF yoke extending modified raglan sleeves, label "Jeanne Lanvin, Execute Par Maria Carine Sur Autorisation Speciale, Paris", B 44", L 43.5", (label stained & re-stitched, lining discolored, tiny-0.75" moth holes throughout, missing top button) fair.

---



### 158: GIVENCHY COUTURE COAT FOR GLORIA SWANSON, 1950s-1960s

USD 800 - 1,200

Grey wool balloon coat w/ convertible collar, glove length modified dolman sleeve, inset tabbed horizontal pockets at front lap, 3 CF grey button closure, label "Givenchy" & w/ couture tape "11429?", B 72", H 53", L 33.5", (buttons scratched, fleece worn CF, lining shattering esp. at underarms & near seams) good. Originally sold as lot 136 at William Doyle Auction of 'The Property of Gloria Swanson', September 22, 1983.

---



### 159: GIVENCHY COUTURE ENSEMBLE FOR GLORIA SWANSON, 1950s

USD 800 - 1,200

2-pc green wool boucle shadow plaid ensemble c/o hobble coat w/ convertible collar, raglan sleeve, 3 oversized CF button closures, patch pockets, mocha suede belt w/ self covered buckle above hem, matching gimp skirt, label "Givenchy", France, late 1950s, coat B 51", L 37", skirt W 29", L 26", (paint on skirt zip pull chipping, light wear to buttons) excellent. Originally sold as lot 170 at William Doyle Auction of 'The Property of Gloria Swanson', September 22, 1983.

---



### 160: GIVENCHY COUTURE ENSEMBLE FOR GLORIA SWANSON, PARIS,

USD 800 - 1,200

Brown brushed wool balloon coat w/ stand collar & single button closure at throat, 3/4 length raglan sleeve, vertical inset pockets, lined in mocha silk taffeta, matching wool jersey dress w/ scoop neckline, raglan sleeve, empire W w/ gathering across front, label "Givenchy" & w/ couture tape "11343", coat B 70", L 36.5", (coat w/ three 0.5" holes left side, 3.5" seam opening hem lining, fleece worn around collar, lining damaged at SHs) dress B 42", W 38", L 38.5", (lightwear to underarms, 0.25-0.5" partially repaired holes at right underarm, lining damaged at SHs) both good. Originally sold as lot 198 at William Doyle Auction of 'The Property of Gloria Swanson', September 22, 1983.

---

## Autumn Treasures For Your Closet



### 161: TWO GIVENCHY WOOL DAY COATS, PARIS, 1980s

USD 400 - 600

1 pink brushed wool coat w/ notched collar, raglan sleeve, diagonal inset front pockets, 4 CF buttons stamped "Givenchy", label "Boutiques Givenchy, Made in France, Paris", B 40", L 32", (tiny-0.25" spot stains & snacks, button plating worn) good; 1 midnight navy wool twill coat w/ standing shawl collar extending to CF button placket, complex modified raglan sleeve & 2 CF patch pockets, label "Givenchy, Made in France, Paris", B 49", L 32", (light wear & discoloration to label) excellent.

---



### 162: GALANOS WOOL TRENCH COAT, AMERICA, 1970s

USD 400 - 600

Navy wool belted trench coat w/ broad notched collar, military tabbed pockets at B, leather belt w/ double of raised cording & oval self covered buckle, inset SS pockets, silk taffeta lining, label "Galanos", B 38", W 34", L 43", (leather worn at buckle, label stained) excellent.

---



### 163: GIVENCHY DEMI-COUTURE COAT & PRET-A-PORTET CAPE, MODERN

USD 400 - 600

1 grey brushed wool demi-couture coat, standing collar w/ black velvet overlay, deep front & back yoke extending into dolman sleeve, wide attached cuff w/ decorative stitching, CF domed button closure, diagonal inset pockets, aubergine silk lining, label "Couture Givenchy, Made in France, Paris", B 53", L 36", (light crazing to buttons) excellent; 1 black cashmere gored cape w/ CF flat CF button closure & single button at side hem to close at wrist for convertible ?sleeve?, convertible collar, label "Boutiques Givenchy, Made in France, Paris", style #5893, SH-SH 19", L 36", (bottom button replaced, 0.25" white mark top button) excellent.

---



### 164: FENDI STYLIZED COCOON COAT, ROME, 1980s

USD 400 - 600

Dusty rose suede coat w/ convertible funnel collar, t-shaped sleeve w/ turn back cuff at elbow, snap CF closure, extended back panels from inverted box pleat at neck to sides of seat, label "Fendi, Roma", B 70", L 45", (tiny spot stains, 8.5", 0.5" & 3.5" light marks pressed into suede CF B, very light wear) good-very good.

---



### 165: TWO DESIGNER COATS, AMERICA & ENGLAND, 1980s

USD 400 - 600

1 iridescent cocoa brown long puffer coat, CF tie closures, attached hood, SS pockets, tan lining label "Bill Blass", B 46", L 49", (few pulled strings left SH seam, small stains front right SH, 1.25" stain seat, stained lining) good; 1 classic Burberry trench coat in treated cotton, label "Burberry's Regd. Made in England, Expressly for Bloomingdales", B 40.5", L 48.5", (pulls to thread on 5 buttons, tiny spot stains, belt missing buckle) very good.

---



### 166: TWO ISSEY MIYAKE SEPARATES, JAPAN, MODERN

USD 400 - 600

Both label "Issey Miyake": 1 sleeveless brown & teal resist dyed silk wrap blouse, B 38"-42", W 31"-38", L 20"; 1 pair striped white & tan crepe slacks pleated into W & cuffs, CF button & zip closure, W 26.5", L 38.5", (light wear to W band) both excellent.

---



### 167: ISSEY MIYAKE RHYTHM PLEATS "CIRCLE" DRESS & SHORTS

USD 3,000 - 5,000

Both in canary yellow & wine red pleated polyester, neck slit & attached straight glove length sleeves, dress B up to 54", L 25.5"-32", matching color block shorts w/ 2 patch pockets at seat, S/S collection 1990, W 22"-36", L 15", inseam 2.25", (both w/ light wear) both excellent. Similar piece exhibited in "MIYAKE ISSEY EXHIBITION", at the National Art Center, Tokyo, 2016, exhibit # 16 & featured in exhibition catalog & Metropolitan Museum exhibit "MANUS x MACHINA Fashion in the Age of Technology", May 5-September 5, 2016.

---

## Autumn Treasures For Your Closet



**168: COLONIAL REVIVAL FANCY DRESS COSTUME, LATE 19TH C**

USD 400 - 600

Open robe fancy dress costume, printed w/ pink rose motif on cream silk ground, CF closing bodice w/ V CF & CB, attached gathered overskirt, double puff engagante sleeves, CF skirt opening & hem trimmed w/ double gathered self band, ?Coraline? dress stays, B 38.5", W 28", L 50", (shattering CF torso, CB between SH blades, underarms & upper sleeves, underarm stains) fair. Ohio State University Historic Costumes & Textiles Collection.

---



**169: 18TH C REVIVAL MANS FANCY DRESS COSTUME, 1890s**

USD 500 - 800

Fancy dress costume w/ frock coat & drop front trousers in sapphire blue silk w/ gold couched machine embroidery in oak leaf motif w/ pink, blue & white looped silk fillings, twill cotton & pale blue silk sating lining, probably made in New York, buttons stamped ?A. Walter, 14 Rue de la Banque?, CH 36", L 34.5", trouser W 27", L 28.5", inseam 17" (very worn, shattering esp. at hems & underarms, discoloration, lining shattering at collar, period repairs to underarms, seat & lap, right H button replaced) poor. Ohio State University Historic Costumes & Textiles Collection.

---



**170: BELLE EPOCH RENAISSANCE FANCY DRESS COSTUME, NY, 1890s**

USD 800 - 1,200

Gents ensemble of silk velvet & half silk of the style worn to the Bradley-Martin Ball (1896) w/ metallic beaded lace bands on shaped doublet, gathered ruffled W extension in emulation of tabs, modified pumpkin breeches w/ applied embroidered bands to accentuate shape, 1890s, buttons stamped "Brooks Bros, NY", CH 37.5", W 30", L 23", shorts W 38", L 18", (velvet worn throughout, bead loss, collar trim shattering, 0.75" seam opening CB collar, right cuff lace detaching & w/1.5" hole, breeches satin shattering, tiny holes in W band) doublet fair, breeches poor.

---



**171: MANS THREE PIECE COURT SUIT, LONDON, C. 1916**

USD 500 - 800

3-pc black velvet suit w/ marcasite buttons, twill silk lining, label "Hill Brothers, London & Paris" & ?Benesford Heaton Esq.", tailcoat SH-SH 19", CH 46", L 19"-37", waistcoat CH 46.5", W 43.5", L 17.5"-24", trouser label "Beresford Heaton Esp. 1916", W 42", L 32.5"-34.5", inseam 19", (tailcoat lining shattering, crushed velvet at underarms, lightly worn cuffs, 0.75" tear right forearm, 1" tear to CB lining of waistcoat, seams beginning to shatter, trouser W band & pockets shattering, let out at CB seat & SSSs w/ visible stitch lines) good. Ohio State University Historic Costumes & Textiles Collection.

---



**172: LADYS RIDING ENSEMBLE, CHICAGO, c. 1917**

USD 500 - 800

Lady's riding ensemble in wool & silk pinstripe, probably w/ metallic cloth hem liner, label "Anderson & Christiano Roth Century Bldg. Cor. of State & Adams St. Chicago", jacket 39", W 35", L 31", breeches tag reading "Miss Helen Freeburn No. 1349, 10/19/17", W 26", L 37"-40", inseam 26.5", (jacket label shattering & detaching, underarm pads stained & stiff, two 0.25" holes back right, cuff button chipped, pants worn & stained) very good.

---



**173: LADIES WALKING SUIT & JACKET, EARLY 1910s**

USD 400 - 600

2-pc grey broadcloth walking suit w/ corded tape Battenberg appliqué lace trim from SHs & terminating in trefoil above front W slit & across CB at W, oversized rectangular buttons of braided & knotted soutache w/ knotted drops, brown velvet collar & walking length skirt, B 46", W 43.5", L 27"-29.5", skirt W 34", L 42.5", (pulls & light fraying to trim, lightly worn, 0.5" repair CB neck, lining shattered/discolored, 3.25" x 5" patch to lining right H, spot stains, tiny crush spots, hanger imprints to skirt); 1 black silk taffeta bodice w/ applied bands & collar & cuff insertions of floral embroidered silver metallic fillet net & trimmed w/ applied black silk galloon, B 36", W 35.5", L 28-29", (shattering at SHs & cuffs, tiny holes SLVs & sides) all fair.

---

## Autumn Treasures For Your Closet



**174: WOOL TWILL WALKING SUIT, BOSTON, EARLY 1910s**

USD 400 - 600

2-pc heathered wool twill w/ spaced black pinstripe skirt suit, shawl collar & cuff w/ black corded embellishment, label "Macullar Parker Company, Boston", B 41", W 36", L 25", skirt W 26", L 36.25", (label torn, 5" seam opening right lapel lining, light underarm stains, shattering at jacket hem lining, 3 small holes left skirt SS, cluster small spot stains right SS) good.



**175: AESTHETIC MOVEMENT NET & LACE TEA GOWN, c. 1908**

USD 500 - 800

1-pc tulle tea dress w/ appliqué tape lace to stand collar & front & back yoke w/ bands of chemical lace applique over blouson bodice extending down CF to hem of slightly trained skirt & w/ 3 horizontal bands interrupted w/ inverted Vs, glove length sleeve gathered to SH & above cuff, w/ ruching at elbow, entirely lined in china silk, CB hook & eye closure, B 45", W 25.5", (slip N/I, innermost lining mostly removed, tiny-1.5" stains) very good.



**176: TWO SUMMER DRESSES, c. 1912**

USD 400 - 600

1 cotton tea dress w/ Schiffl embroidered bodice overlaid w/ embroidered & chemical lace bands for faux tunic, elbow length sleeve trimmed w/ embroidered & chemical lace bands, neckline & W band insertion of faux Maltese lace, flared skirt w/ let out tucking to W band, B 37", W 24.5", L 49", (spot stains, small holes, light wear, few closures detaching) good; 1 white day dress of Swiss dot cotton w/ crochet embellished woven insertions & appliqués to neckline, bodice, front, elbow length sleeve, cuff & nipped W, rows vertical & horizontal tucks to bodice, front & back, skirt & above cuff, shaped & box pleated insertions at side hem, B 39.5", W 26.5", L 49", (0.75" seam opening L armhole & 0.5" to right underarm, light wear, small spot stains) good. Ohio State University Historic Costumes & Textiles Collection.



**177: ONE SEASIDE & ONE DAY DRESS, AMERICA, c. 1914-1916**

USD 400 - 600

1 cotton mesh dress w/ draped bodice pleated at SHs & W band continuing into knife pleated overskirt, decorative rows of lavender chainstitch embroidery to draped modified sailor collar, at elbows, applied H bands & hem of overskirt, sapphire silk velvet ribbon W band, net underdress w/ attached hem flounce, decorative lozenge buttons to CF & high standing back collar, c. 1914, label ?Woodward & Lothrop, New York, Paris, Washington? B 44", W 28", L 57", (staining, armholes torn & repaired at underarms) good; 2-pc ecru silk ponge day dress w/ draped overtunic to wide W band, skirt w/ let out vertical tucks from narrow W band, drawn threadwork edgings & B 50", W 42", L 18"-20", skirt W 40", L 37"-39", (minor fraying at neckline, worn) very good. Ohio State University Historic Costumes & Textiles Collection.



**178: MANTON DE MANILA CAPE, 1920-1950s**

USD 400 - 600

Manton de manila reversible embroidered silk shawl, folded & manipulated to create tiered cape w/ gathered & stuffed collar, double graduated knotted fringe, 39" x 65" w/ 13" fringe, (messy fringe, light wear & pulls to embroidery, tiny-0.25" spot stains) very good.



**179: MILITARY INSPIRED LADIES BROADCLOTH COAT, c. 1915**

USD 300 - 500

1 taupe fine wool broadcloth, scalloped collar, cuffs & pockets edged w/ silk faux military braid & multiple rows of soutache, asymmetrical front closure w/ cloth covered buttons, stylized fabric faux frogging extending from front princess seaming to mid CB, full sleeves gathered into SH & w/stitch down pleats above cuff, pale pink half silk lining, B 40", L 49", (lining shattering at SHs & neckline, tiny-small moth holes & snags throughout, wear & light staining to buttons & loops) fair.

## Autumn Treasures For Your Closet



**180: WOOL BROADCLOTH GREAT COAT, NEW YORK, c. 1908**

USD 400 - 600

White wool broadcloth box coat style ladies great coat w/ banded ladder work insertions to neckline, CF, oversleeves, side slits & at hem, broad under sleeves heavily trimmed w/ 3 dimensional chemical lace, decorative & functional domed glass foil back buttons w/ gold tone wire matrix, label "James McCreery & Co. New York", B 51", (worn, button detached, tiny-0.25" holes & snags scattered throughout, stains & holes in lining, 0.75" stain left neckline & 0.75" stain below right SH blade, paint cracked in buttons) fair.

---



**181: PINECONE MOTIF CASHMERE CAPE, c. 1910**

USD 400 - 600

Floor length cream cashmere tricot cape w/ embroidered inset & applied panels extending from neckline in pinecone, leaf & geometric trellis motif, pinecones w/ individually cut leaves & hidden embroidered knots, all over silk taffeta panels, SH-SH 17", L 59", (tiny-0.25" holes in appliques, 3" stain to appliqué at right SS, 0.75" & 4" tears at appliqué left SS, 20", 16" & 3" sections of hem falling) good; t/w bag of extraneous related material including appliques.

---



**182: JULIUS GARFINCKEL SILK VELVET CAPE, WASHINGTON, 1920s**

USD 400 - 600

Black velvet floor length cape w/ padded ruffled convertible collar extending down CF opening to hem, self-covered paired button CF closure, padded & smocked SHs, label "Julius Garfinckel & Co. Washington, Paris", SH-SH 19", L 56", excellent.

---



**183: THREE BLACK LACE GARMENTS, 1870-1890s**

USD 400 - 600

1 double tiered black Chantilly lace capelet w/ turndown neck ruffle ornamented w/ silk purple & white violets, ribbon tie at CF, (flowers worn/ stained, light wear) good-very good; 1 black mm bobbin lace over jacket w/ inset seams & decorative panels, B 40", L 23"-26", (tiny pulls & broken brides, both sleeves cut, 3" seam opening right sleeve, 1" hole right & left underarm & H at SS) fair; 1 black Chantilly lace over bodice w/ modified leg o? mutton & SH ruffles, W 26", (3 tears left cuff, 1.5" tear right cuff, tiny-1" scattered holes) fair. Ohio State University Historic Costumes & Textiles Collection.

---



**184: THREE SHOULDER CAPES, 1890s**

USD 400 - 600

1 wool twill cape w/ jet beading under satin & lace trimmed collar, black satin bow at CF over hook & eye closure, SH-SH 18", L 24", (lace fraying) very good; 1 dolman style cape of cord edged braid appliqué to net ground w/ tiered Chantilly lace ruffles over SHs falling to arms & engine back panel, standing collar, CF hook & eye closure, SH-SH 16", L 14-22", (lining shattering & mostly removed, braid worn, CF lace ruffle shattering near seam) good; 1 black ribbed silk capelet w/ crepe chiffon collar, jet beaded passementerie extending from neck over SHs & back trimmed w/ black lace & double faced satin ribbons, paisley patterned silk lining, SH-SH 16", L 16", (bead disease, shattering at edges) good. Ohio State University Historic Costumes & Textiles Collection.

---



**185: ONE CAPE & TWO DOLMAN MANTLES, 1880-1890s**

USD 400 - 600

1 dolman mantle floral cisele velvet on satin ground w/ double row of shaped chenille fringe at CF, hem & sleeves, SH-SH 16", L 23.5"-30.5", (holes in lining, satin shattering at seams & SHs, fringe worn); 1 black plush w/ Ottoman inspired complex tufted & woven passementerie & astrakhan edging, convertible collar, CF hook & eye closure, SH-SH, L 36.5", (trim & collar worn, lamb's wool trim dry & w/ tufts missing, leather cracking, closure rusted & partially detached); 1 silk faille dolman style capelet w/ standing collar & CF trimmed w/ passementerie, corded & worked silk fringe, L 18.5"-30", (fringe messy, tiny-0.25" spot stains, all but top set of hook & eyes missing) all good. Ohio State University Historic Costumes & Textiles Collection.

---

## Autumn Treasures For Your Closet



### 186: THREE DECORATIVE BODICE, 1899-1905

USD 400 - 600

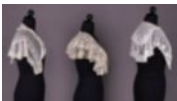
1 patterned silk w/ floating feather motif on chine ground, green velvet collar, cuffs, asymmetrical shaped W band & epaulette inspired SH ornaments, faux cloisonné buttons w/ imitation marcasite, c. 1905 B 30.25", W 24", L 15", (shattering, velvet worn & crushed) fair; 1 bone satin w/ triple horizontal tucked bodice insert, SH, cuffs & CB w/ tucks, collar & front trimmed in grey sequin, bead & faux pearls, B 38.5", W 26", L 19", (spot stains & cuff pulls, lining stains, sequin loss) good; 1 maroon weft patterned wool satin w/ stock collar, cuffs, W band & silk velvet frock coat reverses over black taffeta CF insert trimmed w/ black passementerie, c. 1899, B 33", W 22.5", L 16", (trim removed, 6" seam opening right panel, 3" & 5" tears lining) very good. Ohio State University Historic Costumes & Textiles Collection.



### 187: THREE BODICES & ONE BOLERO, 1900-1910

USD 300 - 500

1 bolero w/ chemical lace insets & edging w/ embroidered knots, B 41", L 14.5"-20", (discoloration, small stains to sleeves); 1 floral printed silk tulle tiered & self-ruffle edged monobosom bodice w/ lace edged stock collar, B 35.5", W 26", L 18", (yellow bows at cuffs & CF collar shattering, lining stained); 1 net blouson bodice w/ Philippine embroidery & modified sailor collar at CB, sugarloaf thread wrapped decorative buttons, B 38", W 25", L 18.5", (small spot stains & hole, W band fraying, 5.5" opening left SS, missing closures); 1 cotton dress top w/ horizontal lace insertions at bodice front & lower sleeves, eyelet embroidery, B 45", W 28.75", L 20.5", (hem raw, tiny-small holes, missing closures, few torn buttonholes) all fair - good. Ohio State University Historic Costumes & Textiles Collection.



### 188: THREE BERTHAS OR PELERINES, 1830s-1890s

USD 400 - 600

1 w/ hand embroidered tambour florals & 2 rows of ruffles, 1890s, Wd 9", L 39.5", (very light discoloration) excellent; 1 turn back collar & pointed CF & CB to be gathered into W w/ hand embroidered tambour & lace running, bobbin lace edging, 1840s, Wd 44", L 9"- 13", (light wear, tiny-0.25" holes, 0.5" seam opening) very good; 1 double pelerine collar w/ whitework bullion stitch import embroidery in floral motif, probably Indian or Turkish, 1830s, Wd 1"-14.5", L 43.5", (light fraying & tiny holes to edges) excellent.



### 189: TWO EMBROIDERED BONNET VEILS, 1840s & 1860s

USD 400 - 600

1 finely embroidered in running stitch w/ floral bouquets, buds & leaves centers & detail in patterned geometric thread work, 1840s, 44" x 45", (tiny-0.5" spot stains) very good; 1 w/ mm chainstitch round net insert flowers, 1860s, 51" x 41", (tiny-0.25" spot stains, holes & repairs, few small pulls, light wear to edges) good.



### 190: GENEROUS LOT OF SEWING ACCESSORIES, CUSHIONS & DOILIES

USD 400 - 600

Late 19th C-early 20th C: 1 round blue case w/ 6 rectangular doilies, 6"x6"x0.5", (stains/discolorations); needle books, 3"-7" x 4.5"-6"; 63 matching doilies, 5.5"-6" x 5.5"-6", (discoloration/stains, some broken brides & seam openings); 1 woman pincushion, South American, 3" x 5" x 3.5", (worn & stained, crown of straw cap missing); lot of pincushions including Native American made beaded shoe tourist trade trinket, Wd range 3"-20", L range 3"-7"; 1 doilies book w/ 12 round & 2 rectangular doilies, 'Patented September 1, 1896, Other Pat's Pending', 8.5" x 8.5", (light wear/discoloration, 1.5" tear cover) all as is.



### 191: TWO PAIR EMBROIDERED GENTS BRACES, MID 19TH C

USD 400 - 600

1 black velvet w/ chenille embroidered monogram, 13.5" x 2.5", (clips oxidized, embroidery worn, holes in satin backing, dirty, light wear); 1 pair embroidered braces w/ "HLD" monogram, Wd 2", L 30.5", (badly worn, discolored, stained, strap w/ button removed 1 end, seam openings); 1 pair braces w/ cross stitch florals & pink satin backing, Wd 2.5", L 32.5", (dirty, discolored & stained, metal tarnish, embroidery worn) all fair.

## Autumn Treasures For Your Closet



**192: SILK EMBROIDERED WOOL HUSWIF, 1798**

USD 500 - 800

Silk embroidered on wool in meandering leaf & strawberry garland w/ floral bouquet including carnations, & w/ initials & ?1798?, 6" x 10.75", (tie, binding & silk lining shattering, lining stained, many tiny-small holes) good; 1 wooden bobbin w/ hand written note, 0.25"-0.75" x 5.5", (light wear & scratches) very good.



**193: EMBROIDERED SILK DRAWSTRING BAG, 1860s**

USD 400 - 600

Ombre silk leaves & flowers on black silk ground w/ netted fringe, lined in purple silk, 9.5" x 7.5" w/ 3-4" fringe, (lining stained & shattered, fringe worn, edge fraying/shattering) good. Ohio State University Historic Costumes & Textiles Collection.



**194: FOUR DAY OR PARTY SEPARATES, AMERICA, c. 1970**

USD 400 - 600

1 red & white scattered florals on white on navy polka-dot ground, B 40", W 37", L 27"; 1 red/blue/tan polyester double knit slacks in chevron basket motif, label "Dist. By Starlight Trading Inc.", W 32"-36", L 40", inseam 30", (tiny pulls); 1 beige & tan button down w/ stylistically mismatched dancing couple on wooden floor, label "Murjani Poly" & "Lucky Pierre Rome, Paris, NY", B 40", W 37", L 27", (0.5" light stain left collar, 4" stain right sleeve); 1 tan & brown polyester double knit slacks in chevron basket motif pant, label "Dist. By Starlight Trading Inc.", W 31"-35", L 40.5", inseam 30.5", (elastic shot) all very good-excellent.



**195: FOUR PSYCHEDELIC SEPARATES, AMERICA, c. 1970**

USD 400 - 600

1 dress w/ day glow flowers & buds on black ground, lime green attached skirt, attached cord belt w/ triple looped faux bow & woven knotted tassels, c. 1968, label "Bleeker Street", B 38", W 26", L 57", (large areas of discoloration to skirt); 1 deadstock turquoise & yellow printed houndstooth w/ button placket, label "Alex Coleman California", B 41", W 38", L 26", (0.25" hole front right W, 2" white line left SS from print defect); 1 button up flower child print in crazy quilt design, B 45", W 40.5", L 25", (label removed, light buttonhole fraying); 1 button up w/ paisley & Indian inspired motifs, label "Lady Manhattan", B 42", W 35", L 27", (hem falling left H) all good-very good.



**196: NATIVE AMERICAN INSPIRED DEERSKIN DRESS, LA, EARLY 70's**

USD 500 - 800

Deerskin leather handmade halter dress w/ tooled, dyed & pieces stylized dream catcher CF w/ eagles, tassels of seeds, wooden beads, black walnuts & bird feathers, pieced from natural hide shapes w/ leather lacing, double tie & lace-up back closure, label "Fly by Nite Leather L.A.", adjustable B 23"-34", W 24"-28, L 38"-46", (tiny-0.5" spot stains, few natural holes in hides original to make) excellent.



**197: TWO PRINTED ENSEMBLES, AMERICA, 1970s**

USD 400 - 600

All poly knit: 3-pc ensemble c/o tank top, long sleeve & slacks top & trousers all printed w/ cluster multicolor florals on diagonal green & white striped ground label "A Miss Capri Original", jacket SH-SH 17.5", L 25", top B 39", L 21", trouser W 23"-38", L 43.5", inseam 32.5", (5.5" seam opening in W band, areas of discoloration to slacks); 2-pc ensemble c/o long sleeved shirt blouse w/ button up placket & gored skirt w/ elasticized W, both printed cherry blossom motif on blue ground, B 44", W 41", L 25.5", skirt W 26"-42", L 22.5", (pulls to seams CF collar, minor fading W band) all good- excellent.



**198: THREE PRINTED KNIT DRESSES, AMERICA, c. 1970**

USD 400 - 600

All printed on poly knit: 1 printed dress in black & yellow floral w/ red outline leaves incorporating pixelated mosaic motifs w/ reverse shirt collar, shaped empire W & long sleeve, B 41", W 28.5", L 38"; 1 deadstock long sleeve shirt W dress printed w/ navy spheres on navy & white polka dot grid ground attached tag reading, "Howland", B 47", W 32.5", L 37.5"; 1 printed minidress/tunic w/ short cap sleeves, shirt collar, zip at CF in modern mogul inspired stylized tracery & boteh motif on purple ground, B 40", W 38", L 32?, all excellent.



## Autumn Treasures For Your Closet



### 199: THREE BLASS & ONE UNGARO LADIES JACKETS, 1980s

USD 400 - 600

1 quilted & embroidered chine multicolor floral on black silk satin ground w/ round neckline, CF & cuff button closures w/ pink rose, label "Emanuel Ungaro Parallele, Paris, Made in Italy", B 38", W 32", L 22", excellent; 1 scarlet wool crepe w/ embroidered leaves & flowers w/ tufted blossoms & centers, Nehru collar, CF snap closure, label "Bill Blass", B 37", W 34", L 23.5", (tufts worn & misshapen) very good; 1 cropped sequin encrusted evening jacket w/ faux vest in blue & white outlined in cream braid w/ gold & white sleeves, label "Bill Blass", B 43", L 17.5", excellent; 1 black & white silk satin asymmetric tuxedo inspired evening jacket w/ CF button closure, faux H pockets, label "Bill Blass", B 38", W 33", L 22.5", (tiny stain CB) excellent.



### 200: ONE BILL BLASS & ONE GUY LAROCHE SKIRT SUIT, LATE 1980s

USD 400 - 600

1 heather cashmere skirt suit w/ convertible chinchilla collar, CF button closure, 4 button suit cuff, horizontal detailing across B, W & at back, inset SS pockets, grey silk lining, matching straight skirt, label "Bill Blass, Made in USA", B 38.5", W 35", L 28", skirt W 27.75", L 25", (two 2.5" splits in fur collar) excellent; 1 sport tailored tan & cream wool basket weave skirt suit, notched collar w/ leather underlay, leather covered domed button closures at CF, tabbed H pockets, applied leather cuff trim w/ button closure, matching straight skirt w/ CB vent, label "Guy LaRoche Sportswear", B 40", W 35.5", L 23", skirt W 29", L 27", (leather buttons & trim worn, tiny spot stains to skirt) very good.



### 201: THREE BILL BLASS DAY ENSEMBLES, AMERICA, MODERN

USD 400 - 600

1 black crepe skirt suit w/ extended boucle calligraphic check & stripe, notched shawl collar, B & W striped CF buttons, tabbed H pockets, matching straight skirt w/ vertical stripe, label "Bill Blass", B 37.5", W 34.5", L 27", skirt W 27", L 22", (boucle worn/pilling); 2-pc ensemble c/o nipped W quilted jacket in modified Tartan plaid wool challis w/ round neckline, hidden snap closure & matching dress w/ striped wool jersey long sleeved bodice, drop W attached box pleated skirt in manipulated modified, coat B 41", W 35", L 29", (tiny holes & stains B) dress B 38", W 32", L 40; 1 black knit dress w/ draped collar, long SLV & gathered skirt, label "Bill Blass", B 38", W 29", L 41", all very good-excellent.



### 202: THREE GIVENCHY DEMI-COUTURE SKIRT SUITS, 1980-1990s

USD 400 - 600

All 2-pc & w/ label "Couture Givenchy, Made in France, Paris": 1 fitted quilted silk jacket in shade of green, pink & purple w/ brass banded faceted faux jet CF button closure & black silk velvet collar cuffs & skirt, B 40", W 38", L 21", skirt W 32", L 25.5"; 1 bold printed & diamond quilted silk jacket, round neckline, CF gold-tone button closures, black diamond quilted silk skirt, B 40", W 37", L 24.25", skirt W 31", L 23.5", (neckline discolored, 3" stain at CF W, tiny-0.5" stains); 1 navy wool w/ black cotton eyelet trim to collar, CF & pocket tabs, weighted peplum, aubergine satin lining, straight skirt, B 42.5", W 38.5", L 21.5", skirt W 33.5", L 24.75", (linings discolored), (all w/ hanger imprints to skirt) all very good-excellent.



### 203: GIVENCHY DEMI-COUTURE & PRET-A-PORTER SKIRT SUITS, 1980

USD 400 - 600

All 2-pc: 1 wool & silk brown & multicolor bouclé tweed w/ Nehru collar, gold tone button closure, diagonal tabbed H pockets, matching skirt, label "Couture Givenchy, Made in France", B 40", W 39", L 28", skirt W 32.5", L 25", (light wear); 1 lime green silk shantung w/ gold tone cast swirl buttons to CF & deep cuff, applied tab shelf pockets, matching skirt, label "Givenchy, Made in France", B 40", W 38", L 24.5", skirt W 32.5", L 24.5", (light wear, spot stains, 1" stain skirt); 1 brown & black modified herringbone twill wool, inset front panels to front H pockets, ?Givenchy? gold tone button closure & pocket decoration, jacket label "Couture Givenchy, Made in France, Paris", B 40", W 39", L 24", skirt W 33", L 25.5", all very good-excellent.



### 204: GIVENCHY DEMI-COUTURE & PRET-A-PORTER SKIRT SUITS, 1980

USD 400 - 600

Both 2-pc: 1 demi-couture printed cotton twill w/ large 1930s inspired floral in shades of red & white on black ground, jacket w/ V-front neckline, brass buttons w/ applied black dome CF closure, weighted peplum, matching skirt, label "Couture Givenchy, Made in France, Paris", B 40.5", W 38", L 22.5", skirt W 34", L 24.5", (buttons worn, both let out w/ visible stitch marks); 1 red twill wool skirt suit inspired by hunting pinks w/ notched lapel & black silk velvet collar, bound black velvet faux & function button holes, matching skirt, label "Givenchy Nouvelle Boutique, Made in France, Paris", B 43", W 41", L 27", skirt W 32", L 25.5", (label in skirt, removed from jacket, tiny-0.5" spot stains) both good.

## Autumn Treasures For Your Closet



### 205: YSL RIVE GAUCHE ENSEMBLE, PARIS, 1970s

USD 400 - 600

Both w/ label "Saint Laurent Rive Gauche, Made in France, Paris": 1 buccaneer blouse in pink loose ribbed silk blouse w/ attached band collar into extended ties, faux MOP pink CF button closures, single buttoned cuff, B 42", L 25", (few tiny pulls); 1 pair black silk & cotton satin high waisted slacks, ?Mod/style RG H84 S5 359?, W 27", L 42.75", inseam 31", both excellent.



### 206: GIVENCHY PRET-A-PORTET BLOUSE & SKIRT, PARIS, 1980s

USD 400 - 600

Both label "Boutique Givenchy, Made in France, Paris": 1 silk satin buccaneer blouse in forest green polkadot on scarlet ground w/ attached band collar into extended ties, front yoke SH, deep inverted pleat at CB, cuffed bishop sleeve, B 50", L 24.5", (light button wear, tiny-0.25" holes esp. to ties); 1 black silk velvet skirt, W 34", L 24", (1" seam opening & repair right SS hem, velvet crushing at W band from hangers) both very good.



### 207: UNGARO SILK ENSEMBLE, PARIS, 1980s

USD 400 - 600

Both label "Emanuel Ungaro Parallele Paris": 1 marigold resist dyed & printed silk crepe blouse w/ satin polkadot, teal & magenta florals, draped standing collar w/ buttons at nape & small keyhole back B 44", L 23", (0.5" light spot stain CF B); 1 pair black silk slacks, W 30", L 43", inseam 31", (tiny hole front right knee) both very good.



### 208: TWO CHANEL JACKETS & ONE VEST, PARIS, LATE 20TH C

USD 400 - 600

White textured novelty weave jacket & vest woven w/ crystal tinsel & sequins, both w/ MOP CF button closures etched w/ ?Chanel Paris? & lined in silk, jacket w/ self fringe, label "Chanel", jacket B 36", W 34", L 20", vest B 35", W 34", L 18", (light wear to fringe & pulls to jacket) very good-excellent; 1 pink wool jacket in double basket weave, 2 patch pockets, front lapel & cuffs w/ decorative reinforced stitching, gold tone ?CC? logo buttons to front opening, pockets & cuffs, label "Chanel Boutique", B 40", W 40", L 22", (light wear & pilling, tag fraying, lining dirty around hem) good.



### 209: PUCCI, CHANEL & RALPH LAUREN SKIRTS, 1970-MODERN

USD 400 - 600

1 shammy suede skirt, fitted high W w/ button closures & wide belt loops, flared midi length, America, label "Ralph Lauren Country", W 27.5", L 36.5", (light wear esp. at lap, stains to seat, left SS, CF hem & right side) good; 1 cotton velveteen Deco inspired fantasy chevron motif in shades of brown & pink, snap & zip W closure, attached W band & hem in abstract geometric motifs, V hemline front & back, printed "Emilio" signature & labeled "Emilio Pucci", Italy, W 25", L 33-44.5", (tiny-0.5" spot stains, discoloration around W band) good; 1 black pleated silk crepe skirt w/ single ?CC? logo button & zip closure, France, label "Chanel Boutique", W 26", L 39", (1 section pulled stitches at lap, 2 light 1" stains seat, 2 tiny white spot stains above hem) good.



### 210: YSL, GIVENCHY & UNGARO SKIRTS & PANTS, 1980s

USD 400 - 600

1 deep charcoal knit wool skirt, label "Couture Givenchy, Made in Italy", W 30.5", L 26.5", (spot stains lap, 1.25" laddering section, several undone &/or repaired sections W band seam); 1 pair goldenrod wool trouser w/ interrupted stripe, label "Emanuel Ungaro, Paris?", W 31", L 42.75", inseam 31.25", (tiny spot stains seat, stains right knee & cuff); 1 grey brushed heather wool skirt, label "Couture Givenchy, Made in France, Paris", W 33.5", L 24.5"; 2 skirts, both w/ label "Saint Laurent Rive Gauche, Made in France, Paris": 1 black twill wool w/ dual blue & white pinstripe, W 26.5", L 22.5", (light hanger imprints); 1 plum velveteen, W 26.5", L 23", (velvet crushed from hanger at W band) all good-excellent.

## Autumn Treasures For Your Closet



### 211: SIX DEMI-COUTURE SKIRTS & PRET-A-PORTET GIVENCHY SKIRTS

USD 400 - 600

1 shocking pink twill flannel skirt pleated into H yoke, "Boutiques Givenchy, Made in France, Paris", W 33", L 24.5", (spot stains); 1 black velvet, label "Couture Givenchy, Made in France, Paris", W 34", L 24.5", (hanger imprints); 1 cream satin weave wool, label "Boutique Givenchy, Made in France, Paris", W 33", L 23.5", (tiny pulls, tiny-0.5" spot stains, hanger imprints); 1 red wool window pane weave, label "Boutique Givenchy, Made in France, Paris", W 33", L 24", (light wear & pilling); 1 black wool double knit, label "Couture Givenchy, Made in France, Paris", W 37.5", L 25", (2" stain SS, light tiny-1" stains, two 0.5" holes seat, W band worn); 1 khaki green brushed wool, label "Givenchy-Paris", W 36", L 25", (hanger imprints) all good-excellent.



### 212: YSL DESIGNED & CHRISTIAN DIOR LABELED ADAPTATION, 1960

USD 400 - 600

Taupe guipure lace dress lined in cotton, scalloped neckline & cross draped bodice, 3/4 length sleeves, box pleated skirt w/ double tuck about scalloped hem, label "Christian Dior Exclusive Adaptation for Australia by House of Youth?, designed by YSL & licensed for production in Australia, B 40.5", W 29.5", L 42", (label stained, minor wear & pulls to lace) very good.



### 213: THREE PARTY DRESSES, AMERICA, 1950-1960s

USD 400 - 600

1 cream lace over pink crepe, drop W linen blend attached skirt w/ applied H band & drape, label "Peggy Hunt", B 42.5", W 31", L 43.5", (tiny spot stains, 0.5" stain lap, 3" light stain seat); 1 pale peach crepe w/ scalloped neckline w/ inlaid guipure lace neckline w/ rhinestones, short cuffed sleeves, faux peplum w/ attached multi paneled skirt, label "Gloria Swanson Original", B 44", W 34", L 47.5", (no missing, discoloration back of neck & lap, small spot stains, 0.25" hole back of neck); 1 cream crepe Grecian inspired evening dress w/ asymmetrical soufflé yoke w/ beads, sequins & pearls, beaded looped fringe & left SH w/ flat self bow over closure, label "Miss Elliette California", B 39", L 56", (bead & sequin loss, discoloration/stains) all good.



### 214: ONE HALSTON & ONE MUIR SUMMER DRESSES, 1960-1970s

USD 400 - 600

1 pale peach silk jersey tunic dress w/ modified dolman long sleeve, V-neckline w/ attached flat ties at CF, gored back w/ let out pleats, flat felled top stitch seaming, label "Jean Muir London", B 38", L 47", (light 1" stain lap, light 3.5" line stain at back right) very good; 1 pale chartreuse double silk chiffon shirt dress w/ blouse top, short sleeves, CF button closure, self-covered belt, elasticized W, slightly flared ankle length skirt, New York, label "Halston", B 37", W 34", L 58", (belt stiff, warped & lightly stained at edges, light underarm stains) very good.



### 215: GALANOS CHIFFON TUNIC, AMERICA, 1970s

USD 500 - 800

Green chiffon belted dress w/ round neckline, full sleeves pleated to SH & wrist, multilayer chiffon mini-skirt w/ over tunic, self-covered leather belt w/ round lucite & rhinestone buckle, label "Galanos", B 38", W 31", L 37", (belt stiff & warped, chiffon on belt worn & tearing at edges) excellent, belt as is.



### 216: TWO YSL RIVE GAUCHE SILK DAY DRESSES, PARIS, 1970-1980s

USD 400 - 600

Both w/ label "Saint Laurent Rive Gauche, Made in France, Paris": 1 resist dyed silk w/ scarlet & cream rounded diamond on black damask polkadot grid ground, half standing narrow draped fall collar & narrow sleeve cuff both edged in navy silk, gathered W w/ attached skirt & narrow self tie, B 41", W 26", L 43.5"; 1 long sleeve day dress in resist dyed & printed diamond plaid in shades of brown & cream on black silk w/ damask spot grid ground, black velveteen collar, CF button placket, self tie belt, B 45", L 37", (tiny-0.5" spot stains to yoke facings) both excellent.

## Autumn Treasures For Your Closet



**217: TWO YSL RIVE GAUCHE SILK DAY DRESSES, PARIS, 1980s**

USD 500 - 800

Both silk crepe de chine & w/ label "Saint Laurent Rive Gauche, Made in France, Paris": 1 multicolor manipulated stripe w/ band collar into jabot tie front, horizontal striped yoke, wide cuff, fitted W band w/ manipulated pink stripe box pleated skirt, B 42", W 24", L 46", (2 light spot stains lap & 1 small at cuff, hem unpicked, light stains across back, tiny chip to left wrist cuff button); 1 in red, blue, purple, green & orange kaleidoscopic abstract motif, V-neck, full SH glove length sleeves, self-tie belt, B 36", W 25", L 41.5", (hem unpicked, 0.5" spot stain left knee SS, 1.5" light stain front right SH & 1" CB above hem) both very good.

---



**218: THREE PARTY DRESSES, AMERICA, 1980s**

USD 400 - 600

1 black guipure lace on dotted net over pink wool, illusion neckline & long sleeve, w/ silk lining, B 36.5", W 26", L 41", (minor fraying to lace edges) very good; 1 Fortuny pleated silver & celadon polyester w/ diagonally draped bodice, metallic gold bobbin lace V-neckline, invert V waistline & asymmetrical side W, gold beaded fringe at hem, SS zip closure, label "Mary McFadden", B 34", W 27", L 39", (large light brown staining across right side, general wear) fair-good; 1 black lace illusion bodice w/ long sleeve, metallic gold lace corset overlay at W, attached black guipure lace straight skirt, label "Bill Blass", B 34", W 28", L 39.5", (lace lightly worn) very good.

---



**219: ONE METALLIC & ONE GEOFFREY BEENE PARTY DRESSES, MODERN**

USD 400 - 600

1 metallic gold, silver & white octagonal mosaic tile motif sleeved sheath dress w/ gold & silk border at collar, cuffs & hem, label "Emery Knits Designed by Micia Jr. of Rome", B 40", W 36", L 39", (tiny pulls around hems) excellent; 1 black wool crepe minidress w/ gold lamé geometric velour H & back in insertions & Mickey Mouse collar, CF zip closure from both top & bottom, label "Geoffrey Beene", B 38.5", W 29", L 34", (light 0.25" residue CF B) excellent.

---



**220: ONE HOSTESS & ONE MARY MCFADDEN PARTY DRESS, 1970-1980s**

USD 400 - 600

1 gold metallic brocade w/ rainbow tracery, CF gold tone buttons to W, narrow self-tie belt, fur cuffs, knife pleated full skirt, lined silk organza, label "Bergdorf Goodman", B 37", W 28", L 55", (pulls to fabric); 1 black mesh bodice in meandering organic grid w/ bead encrusted interstices, diagonal bands to B, W & Hs w/ floral & leaf embroidery accented w/ rhinestones & gold threads, Fortuny pleated skirt, label "Mary McFadden", B 38", W 32", L 56.5", both excellent.

---



**221: THREE MARY MCFADDEN EVENING GOWNS, AMERICA, 1980s**

USD 400 - 600

All w/ scoop neckline long sleeves, permanent pleated & labeled "Mary McFadden Couture": 1 black diagonally pleated top w/ lower back keyhole, beaded, pierced rhinestone & metallic thread embroidered W band, brocaded lamé lace underskirt, B 33", W 25.5", L 60", (light neck wear, hem & lining at W fraying, missing 1 hook at W closure); 1 w/ burgundy top, patterned metallic silk bubble skirt & quilted W band w/ looped faux tie at right front H edged w/ gold metallic, B 39", W 27", L 61", (tiny holes to lining, minor fraying at closures); 1 w/ black pleated top w/ pink & green plaid taffeta skirt overpainted w/ floral & vegetal motifs in green, gold & black, silk organza lining, B 36", W 29", L 58", (puffy paint peeling, light neckline wear) all very good.

---



**222: TWO GALANOS AFTERNOON DRESSES, AMERICA, 1980s**

USD 500 - 800

1 black silk dress w/ blouson bodice, double ruched piped & stuffed SH puffs applied to short dolman sleeve, gathered over Hs & into back W, self covered CB button & zip closure, label "Galanos", B 42.5", W 35", L 44", (1 CB closure snap partially detached); 1 w/ cream silk crepe top, front & back H yoke in horizontal ladder tucks, fitted back bodice w/ CB button closure & attached blouson over-drape gathered into neck & SH seams, full sleeve to wrapped cuff w/ button tab, drop W attached black silk jersey skirt, label "Galanos", B 37", W 34", L 42", (tiny pulls) both excellent.

---

## Autumn Treasures For Your Closet



### 223: ONE GALANOS & ONE GIVENCHY COCKTAIL DRESSES, 1980s

USD 500 - 800

1 hammered & printed silk crepe bag dress in orange, purple & green on black ground, long sleeve w/ deep cuffs encrusted w/ seed beads, various paste, sequins & pierced paillettes, CB zip closure, lined in black silk chiffon, label "Galanos", B 74", L 36.5", (bead/sequin loss & shedding, tiny pulls); 1 black wool jersey long sleeve cocktail dress w/ applied 1940s inspired flat plastic amoeba motif highlighted w/ graduated black beads, label "Boutique Givenchy, Made in France, Paris", B 40", W 38", L 39.5", (appliques lightly scratched/warped, 0.75" light stain CF) both very good.



### 224: ONE BALMAIN & ONE UNLABELED SILK DAY DRESSES, 1980s

USD 400 - 600

1 midnight navy silk crepe w/ satin polkadot ground resist dyed white & red printed ginkgo leaves, double square shawl collar to cross over CF closure, elasticized W w/ self-tie belt, label "Pierre Balmain, Paris", B 44", W 30"-40", L 43", (tiny pulls to cuff stitches) excellent; 1 purple satin ribbon stripe printed silk chiffon dress w/ bateau neckline, internal organza SH support, 3/4 length sleeves, slender self-tie belt, lined in purple silk, B 41", W 25"-36", L 42", (light wear, tiny pulls) very good.



### 225: DEADSTOCK CLAUDE MONTANA EVENING DRESS, PARIS, MODERN

USD 500 - 800

Long black sleeveless evening sheath, V-neckline w/ asymmetric tab collar inserted to band at right front clavicle, SS pockets, high left SS slit, w/ tags attached, label "Claude Montana Paris, Made in France", B 36", L 56", pristine.



### 226: TWO DEADSTOCK DESIGNER EVENING DRESSES & TOP, MODERN

USD 500 - 800

All w/ attached tags: 1 black jersey dress w/ square neckline, flared SH caps, diamond W windows, SS zip closure, label "Stella McCartney", B 27"-34", W 25"-30", L 41.5"; 1 single SH black wool crepe evening top w/ silk lining, SS zip closure, label "Roland Mouret, Made in United Kingdom", B 32", L 9"-15.5"; 1 black jersey dress w/ deep cut open lower back dress layered over cropped tank top, label "T Alexander Wang", B 30"-34", W 34"-38", L 47.5, all pristine.



### 227: CASTELBAJAC HOMMAGES COLLECTION NAPOLEAN DRESS, 1983

USD 800 - 1,200

Long sleeved silk ponge dress w/ front panel hand painted portrait of Napoléon Bonaparte in shades of grey by Israeli artist Eliakim wrapping from front, attached at SHs & SSs & continuing into floating panels at back sides, from Hommages Collection, label "Jean Charles Castelbajac, Ko and Co, Made in France", B 42", L 55", (tide marks around hem & at lap, scattered tiny-0.75" stains, right SH seam pulling) very good. Exhibited in Troyes, Musée d'Art Moderne, Jean-Charles de Castelbajac pour le Musée d'Art Moderne de Troyes, May-July, 1985 & Vienne, MAK Wien, Anti-körper, May-July, 1988.



### 228: HERMES, GIVENCHY & GUCCI SCARVES, PARIS & ITALY, MODERN

USD 400 - 600

1 w/ tromp l'oeu falcons w/ hoods, label "Hermes Paris", 34" x 35.5", (some pulls, many tiny holes around border); 1 black w/ deep ribbon woven border, label "Givenchy, Paris", 22.75" x 23.5", (tiny-1.5" spot stains, tiny hole upper left, tag cut); 1 w/ wildflower & woodland motif on cream silk ground, label "Gucci", 33.75" x 34", (light stains & discoloration, 1" x 1.5" stain bottom center hem) all fair-very good.



### 229: NEW YORK WORLD FAIR & GOLDEN GATE EXPOSITION SOUVENIRS

USD 400 - 600

1 handkerchief machine embroidered w/ Trylon & Perisphere & "World's Fair, 1939", 11.25" x 12", (light discoloration & spot stains) good; 1 printed silk scarf commemorating the Oakland Bay Bridge, Treasure Island & Golden Gate Bridge w/ "World's Fair" & "Golden Gate Exposition 1939", 20" x 19.5", excellent.

## Autumn Treasures For Your Closet



### 230: GROUP OF CHINESE PANELS, EARLY- MID 20TH C

USD 400 - 600

2 skirt panels joined into 1 decorative panel w/ blue & multicolor embroidered butterflies & floral motifs, 11.75" x 30.25", (stains); 1 black embroidered medallion w/ bats, chrysanthemums, roses & other florals, 10.5" diameter, (light wear to embroidery, 1" stain to backing); 1 sleeve cuff panel converted to hanging w/ figures presenting gifts in garden, 5.75" x 21", (light stains); 2 kossu woven robe panels w/ auspicious symbols, 7" x 33.25", (paper worn & chipping, small glue spots); 1 metallic & silk brocade on black satin ground w/ tassels, 15.25" x 59.5", (tassels messy, light wear) all good-excellent.



### 231: EMBROIDERED DRAGON PANEL, CHINA, c. 1900

USD 500 - 800

Embroidered panel w/ paired confronted couched gold water dragons & auspicious bats in water, mountain & cloud motifs, 5 couched gold 5-claw dragon roundels w/ auspicious pearls on silk satin ground, 25" x 46", (wear & pulls to applied braid/cords, two 0.5" holes top edge, backing stained) very good.



### 232: BROCADED DRAGON PANEL, CHINA, 18TH C

USD 500 - 800

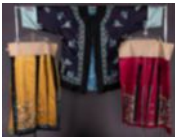
Five 5-claw dragons w/ pearls on dense background of symmetrical clouds, 36.25" x 35", (backing stained, light spot stains, shattering around edges, brocade worn) good.



### 233: EMBROIDERED INFORMAL ROBE, CHINA

USD 500 - 800

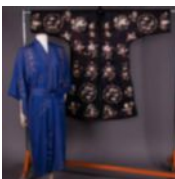
Black robe w/ blue & orange embroidery, CH 52", L 41", (shattering at SHs & hem lining, embroidery lightly fraying, many tiny holes & shattering to lining, 1" hole CB) fair.



### 234: TWO MANDARIN SKIRTS & INFORMAL ROBE, LATE 19TH-MID 20TH

USD 500 - 800

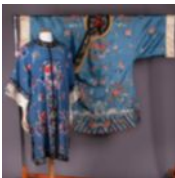
1 black satin embroidered robe w/ ombre blue florals & butterflies, pink, blue & green woven ribbon applied as collar yoke & down CF, pale blue sleeves embroidered w/ florals in gilt & silk thread, silk damask lining, 1940-1950s, B 54", L 35.5", (tiny light stains left SH blade & front left yoke, spot stains to cuff) excellent; 1 mustard silk satin paired skirt embroidered w/ butterflies & floral motifs in silk floss w/ Peking knots & couched gold, c. 1900, W 44", L 37"; 1 wine red silk satin skirt embroidered w/ Phoenix, butterfly & floral motifs in ombre shades of blue, w/ tan & green Peking knot & couched gold thread work, late 19th C, W 47", L 34.5", (both w/ trim shattering & largely missing, stains/discoloration/wear, small holes & pulls) both fair.



### 235: EMBROIDERED INFORMAL ROBE & KIMONO, CHINA & JAPAN

USD 400 - 600

1 sapphire blue silk robe w/ padded & metallic embroidered sea dragons, early 20th C, CH 52", L 54", (minor wear to cords, 9" seam opening left SS, light stains, small holes left lapel) good; 1 ladies typical informal robe, embroidered roundels w/ butterflies, cherry blossoms & branches & cranes on black silk satin ground, early 20th C, CH 54", L 45", (lining shredded, largely missing & detached, 3 CF closures detached w/ 2 included, 10.5" seam opening right SS) good.



### 236: TWO SILK EMBROIDERED ROBES, CHINA, EARLY 20TH C

USD 500 - 800

1 blue robe w/ roundels embroidered in ombre florals in satin stitch & Peking knot, water, waves, mountain & metallic embroidered butterflies, embroidered sleeve bands, floral patterned silk lining, pink jade buttons, CH 60", L 42.5", (lining shredding & detaching at hem, missing top closure, trim detaching at collar, applied cord detaching, small stains) good; 1 blue silk crepe embroidered w/ potted florals to form roundels & w/ couched gold tracery, blue lining, CH 50", L 44", (light wear to embroidery) very good-excellent.

## Autumn Treasures For Your Closet



### 237: THREE PAIR SILK SHOES, CHINA, LATE 19TH- EARLY 20TH C

USD 400 - 600

1 pair entirely hand stitched lotus shoes, embroidered on silk satin w/ raised heel, Late 19th C, L 4.5", Ht 3.25", Wd 0.75"-2", (broken embroidery on tongues, two 0.25" wear holes 1 toe); 1 pair red silk boys shoes w/ embroidered lion face, beads, sequins & woven braid, probably made for boys festival, L 4.75", Ht 1.5", Wd 2.5", (eye on lion badly degraded); 1 pair blue silk damask flat shoes for previously bound foot, L 6", Ht 1.25"-2.25", Wd 1"-2.25", (moldy, soles caked in dirt), (all worn, dirty & w/ light staining) all good-fair.



### 238: THREE BROCADED OBI, JAPAN, MID 20TH C

USD 400 - 600

1 multicolored w/ large avian, floral & cart motifs, 12.75" x 159.5", (pulls, light wear); 1 multicolored w/ cart, gifts & tree motifs, 12.5" x 150.5", (visible basting stitches along 1 long edge); 1 orange, coral & gold w/ rooster & village scene including fields, shrubs, mountain & house, 12.25" x 151", (light discoloration & spot stains, 10" seam opening 1 end) all very good- excellent.



### 239: TWO MATLEASSÉ WEDDING FURISODE, EARLY-MID 20TH C

USD 400 - 600

1 brown patterned silk matelassé w/ butterfly & blossom motifs on matlassé tracery ground, lined in scarlet patterned silk, CH 52", L 68", excellent; 1 white silk matelassé embroidered w/ cranes, pine branches, cherry blossoms & roses, B 60.5", L 74", (dirty & light stains around hem, pulls to seams at hem) very good.



### 240: DYED, PAINTED & EMBROIDERED FURISODE, JAPAN, 19TH C

USD 400 - 600

Grey resist dyed, stencil painted, embroidered w/ couched metallic thread in cherry blossom, crane, pine trees & turtle motifs, orange silk lining CH 54? CH 54", L 56", (shattering around cuffs, hem & lining, light discoloration/stains, 5" seam opening right armscye & 1.5" left armscye) good.



### 241: TWO EMBROIDERED EXPORT ROBES, 1940-1950s

USD 400 - 600

1 black robe w/ bright ombré multicolored embroidery in floral, landscape & pagoda motifs, sun frog & monkey knot CF closures w/ impeccably paired floral motifs, 1940s, CH 46", L 42"; 1 sapphire silk satin traditional robe style modified for Western market w/ ombré embroidery in floral motifs & yellow monkey knot closures, 1950s, label "Bai Hua", CH 40.5", L 39.5", (both w/ very minor wear to embroidery) both excellent.



### 242: EMBROIDERED & BROCADED CHINOISERIE EVENING COATS, 1930s

USD 400 - 600

1 embroidered evening coat w/ phoenix, bathing birds & florals in satin & Peking knot on ivory silk satin ground, 1930s, CH 46", L 40", (tiny holes CB lining, top 2 closure loops shattering, pink dye transfer) good; 1 reversible Chinese patterned silk coat, one side white w/ floral motif & other green w/ butterflies, 1950s, CH 56", L 38", (tiny light age spot CB & left sleeve) excellent.



### 243: EMBROIDERED EXPORT EVENING COAT, CHINA, 1930s

USD 500 - 800

Chinoiserie evening coat embroidered w/ ombré twisted silk in shades of blue, pink & green florals w/ bronze border bands & scrolling foliate & frond motifs, open front w/ slender reverses, full length sleeves, lined in butterscotch silk velvet, B 42", L 38", (minor discoloration/ spot stains scattered throughout, pulls to embroidery) very good.

## Autumn Treasures For Your Closet



### 244: TWO EVENING ENSEMBLES, AMERICA, LATE 1960s

USD 400 - 600

3-pc ensemble c/o olive satin sheath dress w/ 16" zipped detachable hem, reversible overcoat of olive silk satin to chine printed lame w/ orchid motif, matching sheath dress both w/ wide beaded, sequin & rhinestone encrusted details to coat slit & dress neckline: coat B 46", L 41", satin dress B 41", W 34", L 39.5"-55", lamé dress B 41", W 34", L 39.5", (small spot stains & pulls to all, 1.75" stain to lining of jacket, minor bead loss to lame) very good; 2-pc powder blue metallic satin matelasse in stylized wave motif, evening coat & sheath dress w/ tinsel embroidered neckline w/ faux pearls & rhinestones, 1960s, coat B 44.75", L 39.5", dress B 42", W 39", L 39", (fraying to coat edges) excellent.



### 245: TWO COCKTAIL OR EVENING DRESSES, CALIFORNIA, 1960s

USD 400 - 600

Silver lamé dress & coat set, evening dress w/ V neckline, spaghetti strap edged & trimmed w/ rhinestones, high W & shaped midriff, diamond quilted open front evening coat w/ glove length sleeves, label "Original Lilli Diamond of California", coat B 46", L 45.5", dress B 35", W 27.5", L 47", (linings very stained, pulls, 1.25" seam opening right cuff, stones at neckline added later, underarm stains to dress, pulls & holes to B, 0.5" tear CB zip, taken in at several seams) dress fair, jacket good; 1 coral crepe dress w/ deep V-neckline front & back, faux wrap ruffled edged skirt w/ 3 paste buttons, label "Lilli Diamond California", B 38.5", W 27", L 39", (very light stains back left underarm, tiny spot stains left SH) very good-excellent.



### 246: TWO PARTY DRESSES, AMERICA, 1960s

USD 400 - 600

1 hand painted silk evening sheath w/ sequin & beaded drops & beaded bands in impressionist chevron, hidden zip closure at back left SH, B 36", W 33", L 54", excellent; 1 long sleeve black & white polka dot dress w/ black velvet bodice, skirt & stole in polkadot velveteen, black velvet hem band B 36", W 27", L 52", wrap 9.75" x 78", (cream ground discolored on both) very good.



### 247: TWO COCKTAIL DRESSES & ONE TEAL TRAINA COAT, 1960s

USD 400 - 600

1 powder blue corded guipure lace w/ scalloped neckline, CF, cuffs & attached back capelet, B 50", L 49.5", (tiny-0.25" spot stains, pulls) very good; 1 blue wool jersey sheath w/ tromp l'eau beaded bow neckline into deep V at CB, label "Lilli Diamond California", B 39.75", W 29", L 44", (partially detached CB hook & eye) excellent; 1 pink silk satin shantung dress w/ 3 escalier flat bows to CF, glove length sleeves, c. 1960, label "Teal Traina, New York", B 42", L 36", (light hem discoloration, 3" light stain left side) very good.



### 248: TWO PERIOD REVIVAL PARTY DRESS, 1950s & 1960s

USD 400 - 600

1 peach halter dress w/ open back attached capelet, faux cummerbund W w/ self flower, tiered petal overskirt, 1950s revival of 1930s, B 32.5", W 22", L 59", (few light tiny spot stains) excellent; 1 black satin column w/ sequin embellishment above hem, chiffon SH capelet & mesh overskirt attached to empire W, sequin, bead & pearl embroidery at B & overskirt hem, 1960s revival of 1920s, B 35", L 56.5", (embroidery loss, pulls to net & chiffon layer & fraying at edges) good.



### 249: PATRIOTIC BARBEQUE ENSEMBLES, AMERICA, c. 1948 & 1960s

USD 400 - 600

2-pc red & white striped ensemble c/o vest & skirt, patch pockets, CF ball button closure, B 41", L 28.5", skirt W 31.5", (tiny-0.25" spot stains, 0.25"-1" holes back); 1 striped bib front vest w/ 3 buttons & bottle opener on chain to patch pocket, W 31"-57", L 24", (discoloration, fading & tiny spot stains, metal oxidizing); 2-pc ensemble c/o red, white & blue striped top w/ tie W & pocketed apron front, blue & white skirt, B 40", L 28", skirt W 27.5", L 37.75", (stains, small holes, hem & armscye binding worn, 0.5" repair back right top hem, fading, 1" repair W band skirt); 1 red & white striped tailored vest w/ clear buttons, label "The Musical Museum Deansboro NY", B 41", W 38", L 19.5", (discoloration & tiny stains, pilling) all fair-good.



## Autumn Treasures For Your Closet



**250: WOOL CHALLIS EVENING DRESS, c. 1850**

USD 400 - 600

Yellow wool challis 1-pc evening dress w/ woven vertical stripe in varied grouping & widths, bateau neckline, short double puff sleeves, bodice gathered to W band, piped biased trims, cartridge pleated bell skirt w/ wide deep flounce, B 35.5", W 23", L 57", (light spot stains & discoloration, light shattering & tiny-2" holes, 5" stain right hem, 0.25" & 0.5" pink stains to lap) poor.

---



**251: ROLLER STAMPED SILK MOIRÉ DAY DRESS, 1860s**

USD 500 - 800

2-pc sapphire blue roller stamped silk moiré day dress w/ fitted long sleeved Swiss W bodice w/ basket weave silk CF button closures, piped armscye & double piping at bodice W, 2-pc shaped sleeves, bias satin trims, slightly trained skirt w/ cartridge pleating at CB, B 35", W 25.5", L 15.5"-20", skirt W 25.5", L 41"-50.5", (underarms & cuffs shattering, 3.5" trim partially detached left cuff, tiny-0.5" holes, 1" seam opening CB W & 2 at SHs, lining stained, 5" x 2.5" stain patch hem, hem saver worn, 3" seam opening & shattering at skirt W band closure) fair.

---



**252: THREE PIECE SILK TAFFETA DAY DRESS, c. 1868**

USD 500 - 800

3-pc Bismarck silk taffeta & green silk satin decorative accents & edged w/ green silk tassels, bodice w/ square yoke edged in satin & fringe w/ satin tabs at SHs front & back, 2-pc shaped sleeve, CF silk thread worked button closure, overskirt w/ apron front & back w/ 3 edged panels pleated into back W w/ large bow & silk tassel panache at CB & self gathered rosette at left W, full trained underskirt, B 36", W 23", L 16.5"-18.5", skirt W 24", L 38.5"-53", overskirt W 23", L 16"-35.5", (discoloration & spot stains to all, shattering at collar, cuffs & hem, bodice lining shattering, 1" tear CF above bodice hem, 4", 5" & 5.5" seam openings skirt trim & hem, tassels worn & messy, shattering CF W on overskirt closure) fair. Ohio State University Historic Costumes & Textiles Collection.

---



**253: PRUSSIAN BLUE FAILLE & PATTERNED SILK DAY DRESS, 1878**

USD 500 - 800

2-pc Prussian blue silk faille gown, Basque bodice w/ sleeves, bodice inserts & horizontally inserted skirt ruffles of bronze Holly motif patterned silk w/ garnet colored berries on blue ground, standing collar, applied self ruched faux square neckline & cuff trimming, ruffled triple Polonaise skirt w/ slight train, B 32.5", W 25.5", L 20"-26", skirt W 28", L 35"-37", (no buttons at CF closure, or decorative buttons at tails, lace trim detaching collar & cuffs, underarm stains, tiny pulls to brocade, few tiny-0.25" holes & spot stains, skirt stained, 10" seam opening right SS & 7" left SS near lap, 0.25" hole to hem saver) good.

---



**254: TWO PIECE LINGERIE GOWN, 1880s**

USD 400 - 600

2-pc white cotton lawn ruffled gown c/o long sleeved overbodice w/ open front, notched back peplum & long flared sleeves trimmed w/ tiered ruffles, trained overskirt w/ horizontal ruffles & vertical ruched bands, B 36", W 31", L 19", skirt W 27", L 43"-57", (pulls & wear, tiny-0.5" holes, 0.75" repair left SH blade, 1" hole stabilized w/ panel right W, 5" x 4.5" T-shaped repair left side of skirt, 0.25"-4.5", holes to back hem, scattered holes, skirt ruffle beginning to detach) poor. Ohio State University Historic Costumes & Textiles Collection.

---



**255: WOOL CHALLIS DAY DRESS, c. 1878**

USD 400 - 600

Brown shadow plaid wool challis w/ brown silk velvet plastron front, cuffs, back inset panel into skirt drape & hem, dyed gutta percha buttons, B 38", W 26", L 56", (2 missing buttons, 4.5" repair right side seat & 3.5" back left SH blade, tiny-0.5" holes) good. Ohio State University Historic Costumes & Textiles Collection.

---

## Autumn Treasures For Your Closet



**256: WORTH LABELED DAY DRESS, c. 1879**

USD 500 - 800

2-pc cocoa brown silk satin asymmetrical bustle dress, Basque day bodice w/ standing collar, shaped sleeves w/ self panache at Chantilly lace covered cuff, piped & ruched faille insertions long CF self covered button closure, back bodice extending to looped decorative tabs & piped panels, asymmetrically draped bustle skirt w/ tabbed hem, petersham label present ?Worth, Paris", B 37", W 27", L 17"-25", skirt W 27, L 44", (label resewn, 1.25" seam opening bodice CB, bones removed, lace trim at cuffs partially removed, trim removed SHs & lap, tiny pulls, sun fading to SHs, shattering & repairs at buttonholes right SH, shattering to bodice lining & skirt W band, 5.5" seam opening CF skirt) fair. Ohio State University Historic Costumes & Textiles Collection.



**257: 18TH C REVIVAL SATIN & CISELE VELVET GOWN, c. 1880**

USD 800 - 1,200

3-pc cream silk satin & French cisele velvet gown w/ tromp l'eau band in lace & rose motif, fitted bodice w/ square neckline, fitted sleeves, faux stomacher cisele velvet at CF w/ thread covered button closures, trained overskirt w/ double box pleated hem & double lace ruffle, underskirt/ petticoat of bone silk satin w/ cisele velvet overlay, scalloped edge w/ shaped chenille dropped tassels w/ imitation pearls, possible polonaise draping, B 33", W 25.5", L 14"-21", velvet skirt W 26.5", L 38"-41", satin skirt L 59.5", (underarm stains & tears, spot stains & tiny pulls to all pieces, bones poking out of casings, 6" line of stains left back SS, chenille trim dirty & lightly worn, velvet skirt hem dirty) bodice fair, skirts good. Ohio State University Historic Costumes & Textiles Collection.



**258: TWO WORTH BODICES & UNPICKED SKIRT, LATE 1880s-1900**

USD 500 - 800

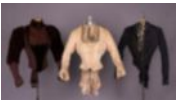
1 bone silk faille evening bodice, elbow length sleeve w/ puffed SH & rows of graduated faux pearls to cuffs w/ double looped ribbon knot, CF lacing, late 1880s, label "Worth", B 38", W 25.5", L 15"-20", (faille over layer removed at right CF, bead loss & damage, scattered tiny spot stains & holes) good; 2-pc gown in tromp l'eau undulating black ribbon motif on cream silk ground w/ pastel floral buds & florals, fitted bodice w/ shaped W, ribbon pattern manipulated at back & into collar, 2-pc sleeve w/ slight SH puff, unpicked skirt, late 1890s, label "Worth", B 38", W 30", L 19" (large stains, shattering at underarms, left SS open, minor shattering throughout) skirt W 132", L 44-47", (completely unpicked, uneven & raw, areas shattering/ tears) for salvage.



**259: PATTERNED & CHANGEANTE SILK DINNER GOWN, c. 1898**

USD 500 - 800

2-pc patterned & changeante silk dinner gown, bodice w/ high stock collar & cuff both trimmed w/ lavender organza & gathered lace ruffle, black satin bow at CB collar, 2-pc fitted sleeves w/ full SH puffs, bodice front jabot insertion of lavender silk organza over bone silk w/ 3 rows of cream velvet ribbon under tiered ruffles at B, gored changeante silk skirt w/ pleated at CB, fuchsia shot silk lining w/ black silk velvet hem, B 35", W 25.5", L 16.5", skirt W 24", L 41.5"-43", (light wear spots at creases in SH puffs, minor shattering at collar, right SH blade & left torso, facings at W starting to shatter, wear to skirt CB at top of pleats, W band & around hem) good.



**260: THREE DECORATIVE BODICES, BALTIMORE, c. 1890**

USD 400 - 600

1 brown faille w/ velvet stock collar & scalloped edge faux stomacher, yoke trimmed w/ silk covered baubles, row of self covered buttons to right & left of CF, early 1890s, label "Misses Jarrett & Emerson Modisies", B 31", W 20.5", L 17"-25", (button wear, missing fringe, crushed velvet bones exposed); 1 cream leaf & floral patterned silk on gold ground, narrow square neckline w/ metallic embroidered silk chiffon, embroidered buttons, gathered bustle fall at CB, late 1880s, label "Miss S E Johnson, Baltimore, B 29", W 21.5", L 15"-26.5", (neckline trim damaged, underarm stains, light wear); 1 black silk faille w/ scalloped neckline & bugle beaded bias cut mesh edged w/ beaded rondels, B 30.5", W 22", L 17"-26", (trim damaged) all good-very good.



**261: ONE ENSEMBLE & ONE BLACK VELVET BODICE, c. 1880 & 1910s**

USD 500 - 800

2-pc black velvet & beaded gown, military inspired sleeved bodice w/ net CF panel trimmed w/ row of buttons & faux frogs, cuffs & faux vest, jet beaded & embroidered floral lace overlay w/ asymmetrical knotted worked fringe extension, walking length velvet skirt w/ jet beading, 1910s, B 41", W 34.5", L 19.5"-44", skirt W 33", L 38", (bead disease, fringe messy/fraying, crushing to velvet on sleeves, wear to bone casings) very good; 1 cisele velvet extended bodice w/ narrow reverse collar, embroidered & jet beaded CF button closures, 2-pc shaped sleeve w/ 2 decorative buttons at wrist, open from W w/ floor length side panels & gathered bustle, c. 1880, B 38", W 28", L 52.5", (bead disease & pulls on buttons, hem tape dirty & fraying, 1 bone missing) excellent.

## Autumn Treasures For Your Closet



**262: PINK PATTERNED SILK DINNER GOWN, BOSTON, c. 1895**

USD 800 - 1,200

2-pc pink drouget style patterned silk gown w/ faux vest bodice w/ floating CF & CB panel over black silk satin dickie w/ faux reticella chemical lace overlay, massive 1-pc leg o? mutton sleeves w/ fitted black silk satin cuff overlaid w/ faux reticella lace, pink silk satin high stock collar w/ bow at CB of neck & at W CF & CB, gored skirt, extra set of sleeves, B 35.5", W 26", L 17.5", skirt W 54", L 42", label "L.P. Hollander & Co. Boston", (metal oxidizing, lining & underarms stained & shattering, ribbons at neck, CF & CB W fraying, small holes, skirt W band removed & edge raw, gathering at W undone, stains to lap) fair-good.



**263: SILK FAILLE EVENING GOWN, 1900-1905**

USD 500 - 800

2-pc nude pink fine silk faille gown w/ round neckline, CF faux pearl button closure, ruched Renaissance crepe chiffon sleeves w/ Alençon lace cuffs, Alençon tippet W band, gored skirt w/ inverted pleats for fullness at CB, heavy corded hem edging, gown originally made in the 1860s, remodeled between 1900-1905, label "Madam S-Ford", B 32.5", W 25", L 15.5", skirt W 23", L 40"-50", (0.5" stain right SH blade, light stains throughout both, let out at 4 front B darts, CF buttons replaced, tiny pulls, light wear to skirt hem trim, SLVs & lace W band not original) good.



**264: THREE PIECE SUMMER DRESS, c. 1900**

USD 500 - 800

3-pc white handkerchief linen dress c/o long-sleeve bodice, overskirt & underskirt w/ tucked detailing, double-puffed sleeve, rickrack needlelace yoke, cuffs, edgings & hems, MOP button closures, B 33", W 26", L 21.5", (light discoloration & stains, tiny-0.5" holes, 1 buttonhole tearing) very good.



**265: TWO BLACK SILK DAY DRESSES, 1904-1912**

USD 500 - 800

1-pc black silk dress resist dyed dotted interlocking ring motif, crossed bodice drape at CF & CB over tucked Swiss dot net bodice & high stock collar insert, tucked sleeve w/ Maltese lace & Swiss dot cuffs, tiered attached skirt, B 47", W 35.5", L 61", (net SLVs detaching) excellent; 3-pc black ribbon checked gauze w/ bodice yoke & hanging gigot sleeve w/ deep fitted flared cuff, yoke edged w/ sequins & beads, skirt w/ double ruffle at hem, B 35", W 27", L 17", skirt W 23", L 42-47", (fading at SHs, bead disease, cuff trim fraying, 4 missing jet stones at W buckle, lining shattering at seams & underarms, bones poking out, skirt unlined, 0.25" hole to lap, tiny holes), collar Ht 3.5", circ. 12.75", (edges & velvet worn, bead disease) fair.



**266: ONE EVENING & ONE TRAVELING DRESS, c. 1912 & 1914**

USD 400 - 600

1 cream twill silk gown w/ tape & needle lace trim crossing at front neckline & around nipped W & cuffs, draped overbodice finely tucked over SHs, fitted undersleeve & back bodice trimmed w/ small double flat bows, slightly trained flared skirt w/ tucked side gores & slightly padded hem, B 33", W 23", (stains, 1.5" pen mark right SH blade, chiffon neckline facing torn, bodice lining torn CB & underarms, missing closures); 1 bone crepe day dress w/ layered faux tunic bodice of hand embroidered bands terminating in crochet tassel & tape lace panel & sleeve, draped W band & hem insertion of B&W stripe chiffon, gored skirt w/ elongated Van Dyke hem, B 36", W 30", L 58" (slip N/I, stains/discoloration, chiffon hem fraying & torn) both fair.



**267: TWO LADIES COATS, 1910s**

USD 400 - 600

1 black velvet asymmetrical wrap front coat w/ deep V-shaped back collar asymmetrically trimmed for illusion bandolier from back over right SH terminating at front closures, row of Turks head buttons from CB over left SH into horizontal embroidered band at left lapel, deep faux turn back cuff & wide belt w/ heavy applied passementerie & Turks head buttons, B 50", L 47", (shattering to lining at CB collar, velvet wear around neckline & cuffs) very good; 1 black linen coat w/ pearl cotton embroidered trim in tracery, flowers & lobe motifs to collar, CF & deep cuffs, paired draped & knotted cord & over sized button closures, B 58", L 48", (1.5" hole front right SH) good.

## Autumn Treasures For Your Closet



### 268: ONE TEA & ONE WEDDING DRESS, 1920s

USD 400 - 600

1 white starched organdy tea dress w/ lace insertions & appliqués to round neckline, front & back bodice, yoke, short sleeved cuffs & skirt, CB button closure, Schifflii embroidered hem, B 56", W 35", L 43", (slip N/I, two 0.5" seam openings CF at insertions, 1 right side skirt & CB skirt 1 tiny light stains) very good; 1 cream wool challis wedding dress w/ asymmetrical cross-over draped panel over machine made lace bodice & short sleeves, trimmed from left SH to drop W & back right SH to hem w/ row of faux pearl & silvered seed bead embellished ribbon, 1922-1928, B 42", W 42", L 48.5", (small-tiny holes throughout esp. to lap, across SH blades & right underarm) fair. Ohio State University Historic Costumes & Textiles Collection.



### 269: ONE PARTY & ONE TEA DRESS, EARLY-MID 1920s

USD 500 - 800

1 black tulle & navy party dress w/ V neckline, extended draped back panel & hemline heavily beaded & sequined in undulating floral motifs, draped sleeve embellished w/ sequin bands & paired jet beaded tassels, original navy silk satin underdress w/ net sleeves & W band, B 50", W 49", L 47", underdress B 41", W 47", L 45", (1.25" tear neckline overdress, tiny-0.25" holes, tears net left sleeve & right SS, 3.5" seam opening left SH underdress, underarm stains, light spot stains) fair; 1 cotton tulle tea dress w/V neckline & inserted bands of filet lace at & above hem, Philippine embroidery front & back body & above broad black silk crepe hem band, satin velvet bow w/ extended tails, B 36", W 38", L 43", (slip N/I, few tiny spot stains & holes) excellent.



### 270: TWO SUMMER PARTY DRESSES, 1920s & 1950s

USD 400 - 600

1 green & white synthetic crepe polka dot dress, V-neck w/ draped bow at CF, attached tiered ruffled skirt in reverse color way, zip closure at CB, 1950s revival of 1930, B 37.75", W 31.5", H 40", (hem of ruffle undone & fraying, light stains to bodice, tiny-0.25" holes in ruffles) very good; 1 honeydew green silk chiffon w/ scoop neckline, drop W, 5 circular cut flounces from H to hem, original crepe slip, B 34", W 29", L 45", (belt detached & not original, underarm stains, tiny-1" spot stains, two 0.5" & 1" fraying seam openings at W, shattering underarms & slip) fair.



### 271: HEAVILY BEADED PARTY DRESS, LATE 1920s

USD 400 - 600

Black silk georgette party dress, heavily embellished w/ bugle & faceted seed beads in overall geometric motifs w/ bands of faceted domed beads to scoop neckline, CF, CB, SS, W, & as border of seed beaded floral medallions at W, CF & SSs, Luneville beadwork, snap & hook & eye closures at SHs, B 50", W 48", L 48", (minor bead loss & some loose beads, 2 undone darts near sides at W band, chiffon ties at back W torn, slip N/I) fair-good. Ohio State University Historic Costumes & Textiles Collection.



### 272: CHIFFON BEADED OVER DRESS, FRANCE, MID 1920s

USD 400 - 600

Black Luneville beaded & embroidered chiffon overdress, deep V front w/ beaded band extending to hem, tabbed hem beaded & embroidered w/ stylized graduated bud stock motif & beaded fringe, vestigial sleeves terminating in beaded tassel, label "Made in France", B 44", L 47.5", (slip N/I, beginnings of bead disease, minor bead loss, tiny holes, 1.5" & 2.5" tears at apexes of back straps, small pulls) good.



### 273: BEADED PARTY DRESS, MID 1920s

USD 500 - 800

Peach chiffon party dress w/ CF V neckline & cutout back neckline, gathered W band to slightly flared skirt, heavily embellished in silver bugle & multicolored seed beads & rhinestones in trompe-l'œil bows & brimming floral baskets, Luneville beadwork, B 32", W 21"-27", L 37"-42", (underarm stains, stains & discoloration lap & hem, tiny-0.25" holes, missing closures, slip N/I) good.

## ***Autumn Treasures For Your Closet***



### **274: HOUSE OF ADAIR LAMÉ EMBROIDERED PARTY DRESS, MID 1920s**

USD 500 - 800

Green silk tulle party dress heavily embroidered in silver, gold, & bronze metallic thread in stylized florals & border bands w/ square neckline, illusion draped vest front & back flared skirt, embroidered to create perception of gores w/ scalloped hemline, label "The House Adair of France, Made in France", B 42", W 40", L 44", (label mostly detached, minor tarnish, minor fraying at hem) excellent.

---



### **275: TWO PARTY DRESSES, LATE 1920s**

USD 500 - 800

1 imitation Chantilly lace w/ scalloped square neckline, elbow length flared sleeve, wool ribbon W band w/ flat bow at CF, attached flared skirt w/ scalloped hemline, B 44", W 32", L 52", (pulls & holes to lace at SHs & CF W, minor fraying, 1" x 2" L-shaped repair CF hem & 3" right hem) good; 1 black & metallic lace gown, heavily embellished w/ miniature silver sequins, square front neckline to V at CB, elbow length sleeves, slightly flared skirt w/ notched hem, lined in black silk crepe & w/ ecru silk satin attached slip trimmed in blond lace, B 38", W 36", L 56", (pulls to lace & broken brides, sequin loss, lining missing at sleeves) very good. Ohio State University Historic Costumes & Textiles Collection.

---



### **276: SCARLET GEORGETTE EVENING GOWN, c. 1930**

USD 500 - 800

Scarlet georgette evening gown w/ square neckline embellished w/ row of rhinestones & metallic chainstitch embroidery, attached narrow SH straps w/ floor length layered, draped & gathered asymmetrical back panel, original attached gold silk tissue underdress w/ narrow lamé SH straps, blond lace trim at neckline & lamé lace hem, B 36", W 38", L 48"-56", (tiny pulls, large light stains at SHs of back drape, light 0.25"-1" stains) very good.

---