

Augusta Auctions



December Vintage - Decades of Decadence

Wednesday - December 8, 2021

December Vintage - Decades of Decadence



1: FOUR PIECE PROMENADE DRESS, c. 1868

USD 800 - 1,200

4 pc Montserrat orange ribbed silk w/ CF self covered button closures, paired ruching at sleeves separated by box pleated & lace edge pink silk taffeta bias band trim also to V-neckline & to stylized polonaise overskirt, detachable W band fastening at CF self-loop w/ 3 decorative silk & lace edged festoons over pink taffeta faux peplum, full trained underskirt lined in glazed cotton & buckram, B 34.5", W 22", L 15", overskirt W 22.5", L 36"-46", underskirt W 22", L 42"-65", belt W 20"-26", L 33", (left collar ruffle detaching, 3" stain left B w/ tiny areas of wear, underarm stains, light wear, overskirt W band unpicked, tide marks skirt & belt, underskirt hemline shattering, discoloration/light wear/spot stains to skirt) good. Museum of the City of NY



2: SILK TAFFETA DAY DRESS, c. 1855

USD 500 - 800

Silk taffeta day dress w/ blue, grey & black vertical stripe & horizontal shadow stripe, pagoda sleeve, CF brass button closure w/ riveted blue glass cylindrical bead, watch pocket at left W, full complex boxpleated skirt lined in glazed cotton, L 54", (CF bodice modified w/ inserted lace panels, 5" stain surrounding 2" hole right lap, re-hemmed & shortened) good.



3: BROWN WOOL DAY DRESS, c. 1864

USD 400 - 600

Brown wool day dress w/ vertical interrupted silk stripe, glass button closures w/ applied gold checkerboard centers & brass shanks, 2 piece military inspired sleeve, narrow band collar, piped armcye & bodice hem, pleated skirt w/ cartridge pleats across CB, B 35", W 24.5", L 53", (scattered tiny-0.75" holes & light stains, 1 button replaced, lining discolored at underarms & CB, hem saver very worn & missing in spots, buttons chipped) good.



4: MOTHER'S DAY DRESS & DAUGHTER'S BODICE, c.

USD 500 - 800

Day dress & matching girl's bodice of leno weave pink & white cotton w/ fine woven vertical stripes, both w/ flat forged hook & eye closures: 1 pc mother's dress w/ entirely cartridge pleated W, piped sleeve cuffs, armcye & W band, B 41.5", W 25", L 57.5", (discoloration/tiny-0.75" spot stains, 0.75" hole right seat, 0.5" hole left SH, collar torn & stained, 3 missing hooks) & 1 daughter's bodice w/ piping at neckline, W band & armcye, CH 29", W 22", L 11", (2" black mark at neckline, small spot stains, worn holes left SH & sleeve, repair W closure) both good.



5: TWO PRINTED GIRLS DRESSES, 1840s & 1850s

USD 300 - 500

1 w/ woven horizontal stripe printed in vertical bands w/ brown & multicolored stylized leaf & meandering coral motif on cream silk ground, 1840s, CH 24.75", W 22.5", L 35", (shattering esp. at B & SHs, 3"x 2" repair lap, buttons removed from cuffs, lining stained, several hook & eye closures removed, 2 small repairs seat, heavy wear) fair; 1 printed cotton in yellow & tangerine vertical bi-colored spot & strip motif w/ fine cotton hucking bands on skirt & short sleeve, 1850s, CH 41", W 19.5", L 32", (discoloration/stains, wear) very good.



6: TWO LADIES CAPES, AMERICA & ENGLAND, 1850s

USD 400 - 600

1 red & black changeante silk cape hand embroidered scrolling floral motif, narrow draped collar into CF V trimmed w/ passementerie & looped knotted fringe, SH cape & W panel from SSS, detached matching embroidered sleeve gauntlet, hand quilted chestnut silk lining, American, 1850s, SH-SH 38", L 40.5"-43", (fringe messy, shattering/ worn spots, embroidery pulls, 2 closures removed, 5.5" repair front right panel, underarms repaired) good; 1 cream barege cape w/ single hook & eye closures at CF, neckline w/ double row of pleated cream & brown mm lace, CF & hem w/ single band, 2 horizontal & vertical pleats at CB w/ 3 tassels, English c. 1850, SH-SH 41", L 45"-53", (discoloration/light stains, 1.5" stain right hem, tiny-0.5" holes, pulls to lace) good.

December Vintage - Decades of Decadence



7: PRINTED SILK VELVET MANTLE, FRENCH, 1860s

USD 500 - 800

Mantle w/ overcape in ornage & brown printed diagonal ribbon telis on blue velvet ground, passementerie edging w/ interlaced knotted looped fringe, French, 1860s, CH 56.5", L 46", SH-SH 19", (3.5" seam opening CB collar seam, pulls & light wear, missing CF closures & w/ small repairs, lining damaged at SHs) very good.



8: THREE DAY ENSEMBLES, 1880s

USD 500 - 800

3-pc brown w/ velvet & satin stripe bodice, brown ribbed silk overskirt & skirt w/ double box pleated flounce, label "Trademark Goodyear's Impervious Shield Warranted Patent Nov. 1", B 35", W 26", L 26", skirt W 25.5", L 40", (lace shattering, sm pulls) excellent; 2-pc w/ brown, red & cream wool & cashmere bodice w/ Celtic cross buttons, taffeta Van Dyke trim at cuffs & collar, taffeta skirt, B 35", W 25.5", L 15.5-20", skirt W 22", L 41", (stains/shattering collar, tiny-0.5" holes, 1" hole, 2 missing hooks & eyes, skirt W modified, missing overskirt) good; 1 extended Polonaise bodice in brown & cream fine striped silk taffeta, B 33.5", W 25", L 45.5", (pin holes at CF, lace collar worn/stained) excellent.



9: ONE SILK & ONE COTTON DAY DRESS, 1870-1880

USD 500 - 800

2-pc resist dyed & printed silk organza w/ long fitted sleeves, needlelace collar, bodice gathered into W band w/ added narrow flounce, skirt w/ sets of paired flounces edged w/ lace at front & slightly trained back, B 38", W 27", L 18", skirt W 24", L 41--50", (no W closure bodice, 0.75" tear below top buttonhole, stained lining, light wear/spot stains, 1.25" repair right of skirt closure); 2-pc roller printed day dress w/ red & blue flowers, vegetable ivory buttons, gathered flounce above hem & at cuff, some ties present for Polonaise, c. 1876, B 37.5", W 30", L 40"-47", skirt W 26", L 39", (underarm & left sleeve stains, 11" stain CB skirt, closure replaced w/ snap, 1" seam opening W band, light stains) both good.



10: FLORAL PRINTED DAY DRESS & WRAPPER, 1880-EARLY 1890s

USD 400 - 600

1 maroon floral printed wool twill challis w/ brown & maroon patterned silk embroidered w/ metallic seed beads & short chatoyant bugle beads, c. 1890, B 35.5", W 28", L 52.5", (bead loss, 6" tear left sleeve, 0.75" & 1.25" holes right SS skirt, few tiny-0.5" holes); 1 maroon floral printed wool challis wrapper w/ faceted CF jet buttons, lined in printed cotton, B 39", W 38", L 51", (3" hole back hem, internal W band mostly removed, hem saver very worn/partially repaired, bead disease, neckline worn, many small holes, 5" partially repaired tear left SH blade) both good.



11: COTTON & SILK VELVET DAY DRESS, AMERICA, c. 1889

USD 400 - 600

2-pc resist dyed & printed pink weft faced cotton sateen & silk velvet ensemble, fitted sleeve w/ SH puffs, carved MOP & silver button closures, fitted bodice w/ silk velvet collar, lapel & cuff, American, B 35.5", W 26.5", L 18", skirt W 24.5", L 40", (bones poking from casings, velvet worn, light fading, right sleeve tack undone, 0.5" repair at bodice SS, stained W band & hem saver) very good.



12: TWO PRINTED SILK DAY DRESSES, c. 1890 & c. 1906

USD 400 - 600

Both resist dyed & printed: 2-pc w/ single stemmed floral on black ribbed silk ground & woven polka dot, plum silk satin lapel & faux petticoat & green satin trim to skirt, c. 1890, label "L.P. Hollander & Co. New York & Boston", B 43.5", W 36.5", L 17.5", skirt W 44", L 42", (light discoloration lapels, lace fraying, wear interior, let out front panels, W band replaced, hem saver worn); 2-pc tan silk in geometric pattern based on 1840s motif, Shiffli embroidered net & chemical lace over cream silk satin yoke & interlaced w/ black silk velvet ribbon, B 35", W 25", L 15"-19", skirt W 24", L 42", (2 missing bows, left B closures moved/oxide stains, lining & underarm stains, tiny-0.25" holes & spot stains, 4" hole hem flounce) both good.

December Vintage - Decades of Decadence



13: BONE SILK SATIN EVENING GOWN, c. 1893

USD 500 - 800

2-pc bone twill silk satin gown, silk organza & chemical lace bodice overlay w/ inserted bands of French jet beading on reticella inspired black corded grid, also to stock collar & cuffs, self bow at right front SH, short sleeves w/ standing SH puffs, gored skirt w/ cartridge pleating at CB, taffeta lining, B 33", W 24", L 17", skirt W 26", (beginnings of bead disease, minor bead loss, bow at right SH detaching, lace lightly frayed, collar lining detaching, skirt hem facing & W band shattering, small stains near CB, missing CB skirt hooks) excellent.



14: ROSE BROCADED SATIN DINNER DRESS, c. 1892

USD 500 - 800

2-pc w/ long stemmed pink, red & gold rose broche on black silk satin ground, chartreuse silk satin yoke w/ filigree embroidery on silk net & black jet passementerie incorporating looped fringe at deep lace engageante cuff & stock collar, black satingore inserts trimmed w/ passementerie, B 35.5", W 25", L 17"-20", skirt W 25.5", L 42", (minor bead loss & beginning of bead disease, fringe messy, few missing tacks in lace at left SH, underarm lining damaged, inner W band worn, few tiny pulls) excellent.



15: PEARL EMBELLISHED WEDDING DRESS, c. 1895

USD 500 - 800

2-pc dress of very fine weft ribbed silk w/ woven spot motif & appliqué embroidery w/ silvered seed beads & pearls, bodice w/ horizontally pleated stock collar terminating in tabs at CB, draped Greek inspired plastron swag concealing CF bodice opening, large leg o? mutton sleeve into fitted cuff w/ pleated multilayer buckram to support at SH, bead & pearl encrusted accent at back SHs w/ folded & draped back baldric extending into cascading tail w/ bead & pearl encrusted ring, trained skirt w/ pleated & gathered self hem band, B 35", W 22", L 16", skirt W 22", L 43"-55", (light discoloration & stains to bodice lining, stand collar lining shattering right side, bead loss, right underarm stain & tear) very good.



16: LAMÉ & VELVET OPERA COAT, PARIS, 1895-1900

USD 500 - 800

Shaded gold lamé patterned silk on cream satin ground in serrated overlapping leaf motif, Elizabethan ruff collar & gigot dolman sleeves in olive green silk velvet, silk & gold cord beaded passementerie appliqués & fringe, chenille fringe & crystal beaded drops, chemical lace jabot swag down CF & to sides, label "A St. Vincent de Paul Maison Gaildraud, 41 & 43 Rue de Bac, Paris", B 50", W 57", L 48", (bead loss, wear to sleeves, 3.5" x 1.5" repair right underarm, shattering in front panels, lining damaged, 4.5" repair left seat) good.



17: TWO SILK DAY DRESSES, c. 1893 & c. 1902

USD 400 - 600

2-pc purple silk velvet w/ plum ribbed silk skirt, bodice insert of horizontally ribbed & vertically pleated cream silk, c. 1893, B 41", W 26", L 17.5", skirt W 25.5", L 42.5"-46.5", (lining damaged, petersham cut at back & very worn, CF worn & lightly stained, CB & SSs let out & worn, W band modified, bones poking out); 2-pc chestnut silk satin dress w/ cream filet chemical lace dickie & stock collar, V-neckline w/ rows of embroidered French knots, c. 1902, B 44", W 32.25", L 18", skirt W 31", L 41.5", (lace worn/discolored, lace lining shredded, bodice lining worn/stained, 1 hook detached & 1 removed on skirt, tiny-0.25" stains/holes to skirt) both good.



18: TWO WALKING ENSEMBLES, 1897-1907

USD 500 - 800

2-pc fine basket weave cream wool jacket & skirt ensemble w/ cape collar of silk taffeta spokes trimmed w/ 3 domed silk buttons & tassels over chemical lace, triple cord drops over SHs & at CF, B 46.5", W 50", L 38", skirt W 28", L 40.5", (shattering taffeta, few tiny-0.75" holes, 1 tassel removed & included, large stain right sleeve & 1" left, 2.5" holes skirt above hem); 2-pc brown silk velvet w/ taffeta & soutache appliqué, cream floral silk chiné w/ embroidered lace tulle overlay at CF, silk satin lining, label "Jordan Marsh Co. Boston", B 42.25", W 30", L 17"-22", skirt W 30.5", L 33.5"-37.5", (worn, neck trim detaching, taffeta shattering, lining damaged, 1" seam opening in skirt W band & modified, 1" repair) both good.

December Vintage - Decades of Decadence



19: ONE DAY & ONE EVENING DRESS, c. 1908 & c. 1900

USD 500 - 800

1 red silk crepe w/ pink padded cotton machine embroidered yoke insertion & to cuffs, faceted seed beads & various faceted French jet paillettes, trims, accents & appliqués, stuffed self-cord trim, B 42.5", W 29", L 46"-50.5", (missing skirt, minor bead disease & loss, few sm stains/holes, lining removed, 2" seam opening seat, stain back hem, B bones detaching); 1 cream ribbed silk w/ silk embroidered short chatoyant bugle & pearlized seed bead panels at CF, CB, SH & skirt, crystal beaded loops at panels & slv edges, short puff slvs w/ netted & tasseled fringe, ecru embroidered & spotted silk asymmetrical skirt swag, B 39.5", W 26.5", L 54", (re-made, minor bead loss, few sm stains, 1" cut in netting seat, wear/discoloration lining) both good.



20: THREE TEA DRESSES, EARLY 20TH C

USD 300 - 500

2-pc white cotton net w/ embroidered chemical lace, flounces at neckline, cuff & 2-tiered skirt & appliqued at W, B 43", W 32.5", L 18.5", skirt W 29", L 43.5", (CB closures & W band modified, 3" stains skirt W & hem, scattered tiny-0.25" holes, 6.5" repair right H skirt) good; 2-pc entirely constructed of woven cotton bobbin lace bands & white cotton insertions, original pale blue cotton 2-pc under dress, B 37", W 30.5", L 19.5", skirt W 26", L 38.5", (small-med holes & stains, wear/discoloration, 3"x1" repair slip hem) good; 1 white cotton mull w/ Schiffli embroidery, embroidered eyelets, openwork & insertions, B 37", W 24.5", L 46.25", (light wear) excellent.



21: TWO TEA DRESSES, 1910s

USD 400 - 600

1 bone china silk w/ silk embroidery in floral motif, double net layer under surplice china silk bodice, draped & pleated into SH, glove length sleeve w/ pink crepe de chine & net undersleeves, slightly flared skirt w/ floating back panel tie tacked, weighted & swagged to broad hem flounce, additional embroidered panel over hem flounce at CB, B 36", W 26", L 57.5"-61", (W sash not original, few tiny spot stains, residue & tiny hole by knee, hem dirty) very good; 1 cream cotton w/ pearl cotton embroidery, embroidered filet, & inset needle lace bodice & apron style overskirt w/ netted fringe flounce, satin underskirt, corded tasseled tie at CB, B 38", W 30", L 57", (satin remnant at neckline, few light spot stains, underskirt hem shattering) excellent.



22: PRINCESS LACE TEA GOWN, c. 1910

USD 500 - 800

White cotton net w/ princess lace appliqué, bodice, sleeves & W band of tucked net w/ seed bead & faux pearl embroidered neckline CF & CB in vermicelli & floret motif, broad SH bands extending to W front & back w/ chainstitch appliquéd princess lace, CB closure w/ net panache embroidered w/ seed & faux pearls, full bell-shaped skirt w/ princess lace appliqué w/ cut work & needle lace fillings, B 36", W 26", L 57"-64", (beaded front & back panel detaching, minor bead loss, scattered tiny holes) excellent.



23: SILK CHINE EVENING DRESS, c. 1914

USD 500 - 800

Evening dress of cream satin stripe silk chiné w/ gold & steel blue marguerite motif, elbow length sleeve & pale gold silk gauze drape gathered to CF B extending over SHs to W at CB trimmed w/ silvered bead fringe & trim, 2 hanging panels from CB W terminating in beaded tassels, 2 swagged panels gathered along W line asymmetrically draped over skirt & gathered to either side of CF, B 38", W 28", L 57", (bead loss, small-1" holes in gauze, 1.25" hole CF knee, few scattered tiny-0.25" holes throughout, lining stained & detaching back right W closure) very good.



24: TWO BEADED SILK GEORGETTE EVENING DRESSES, 1920s

USD 400 - 600

Both black & w/ Lunéville beading: 1 overdress w/ iridescent faceted seed beads in dense foliate & vermicelli motif to draped bodice & 4 hanging skirt panels, handkerchief sleeves & draped cummerbund W band, B 41", W 42", L 50", (minor bead loss, 5.5" x 1" tear back lining near W, stains to lining, missing underskirt) excellent; 1 w/ cobalt blue & iridescent black faceted seed beads in Egyptian floral motifs, blouson bodice, handkerchief sleeves, scalloped hem line, integrated self slip, B 45", W 43", L 52.5", (opaque slip N/I, bead loss, right SH tacks undones, small-medium holes & stains, hemline w/ partial seam opening at back W) good.

December Vintage - Decades of Decadence



25: ONE PARTY ENSEMBLE & ONE BEADED DRESS, 1920s

USD 400 - 600

2-pc ensemble of powder blue silk georgette: dress w/ crocheted & appliquéd trim over cotton net at neck & cuffs, vertical tucking, B 43", W 41", L 41.5"-44", (few small stains/holes, 1" hole left SH, 1 snap detached) good & cape w/ vertical pleating & rabbit fur lined collar, L 57.5", (dry, collar worn/stained w/ split at CB, tiny-1" holes neck tie, shattering hem, light wear/discoloration) good-fair; 1 blue crepe de chine party dress embroidered w/ short crystal bugle beads in vermicelli motif, long slv, draped bodice, beaded W band & hanging side panels, asymmetrical scalloped hem line, integrated slip, B 45", W 34", L 47", (small-large stains, 0.75" hole left SH, bead loss, light discoloration/fading, W band untacked, stains slip) good.



26: TWO SILK TULLE EVENING DRESSES, 1920s

USD 500 - 800

1 black silk tulle w/ silver lamé embroidery, faux pearls, briolettes, rhinestones & crystal seed beaded bodice, puff sleeves, asymmetrical tiered skirt w/ silver lamé embroidery, B 38.5", W 30.25", L 48.5", (stone loss, lamé tarnished & worn, few spot stains/tiny pulls, 1" x 0.5" hole left SH strap, B lining shattered) very good; 1 black silk tulle embroidered w/ black sequins in serpentine motif & sequined ball trim over blush pink silk satin bodice w/ painted silk velvet leaf & fruit 3-dimensional appliqué at left front W, cream silk satin skirt w/ scalloped hemline, B 42", W 34", L 55", (sleeve very worn, 1 bauble removed, sequin loss/wear, underbodice stained/shattering underarms & back closure, sticky residue hemline) good.



27: EMBROIDERED & BEADED PARTY DRESS, 1920s

USD 400 - 600

Black cotton tulle over dress embroidered w/ gold silk floss in chainstitch & satin stitch stylized floral, starburst & vermicelli motifs, bronze metallic seed bead embroidered tracery, square neckline, elbow length black tulle sleeves, scalloped front hemline in imitation proscenium drape w/ long beaded fringe, mocha silk crepe underdress, B 41.25", W 28.25", L 45.5", (wear to embroidery, bead loss, 1" repair at left underarm, 0.25" hole CF B tulle, 6" narrow section of tulle replace at CB W) very good.



28: ONE SEQUIN ENCRUSTED OVERDRESS & ONE EVENING WRAP,

USD 500 - 800

1 black & blue iridescent sequin encrusted overdress w/ elongated Reuleaux triangle motif & undecorated tulle sections w/ black bugle beaded swags, pointed scalloped hem, B 41", W 42", L 45", (slip N/I, minor bead/sequin loss, missing closures, few tiny-0.5" & three 1.25"-1.5" holes, SSs unpicked, 3.5"x 2.5" patch of damaged sequins above hem) fair; 1 fine silk tulle sleeveless evening wrap w/ open front, European adapted Chinoiserie floral medallions & classical inverted scallop motif hem in sequins, beads, lamé & silk thread embroidery, probably French, B 36.5", W 40.5", L 56", (wear/tiny pulls, sequin loss, 2" x 1.5" hole front left SH, small holes, edge/trim worn) good.



29: A FINE ENCRUSTED GOLD LAME EVENING DRESS, EARLY 1920s

USD 400 - 600

Silver lamé open work lace evening dress encrusted in Byzantine roundel motifs w/ chatoyant beads in shades of pink, crystal, pink gel sequins, black triangular faceted paillettes, gathered at SSs below W, scalloped hemline apricot crepe de chine underdress, B 34", W 35", L 41", (slip N/I, minor lamé tarnish, minor bead & sequin loss, orange lining fraying at edges & detaching from collar, unfinished hem) very good.



30: LAME ROBE DE STYLE, MID 1920s

USD 500 - 800

Multicolored lamé in printed floral pattern over-stamped w/ wheat & blossom motif, fitted bodice w/ V-neck, piped W w/ gaged pleated attached skirt into 3 tiered of silver & gold lamé Chantilly lace skirt, oversized floral panache at left H of layered hand painted silk organza & velvet petals, underskirt of peach tulle & silk satin, B 34", W 29", L 50", (wear/discoloration at armscyes, small pulls, flower edges lightly fraying/worn, lamé tarnish, wear around closures) excellent.

December Vintage - Decades of Decadence



31: SILK SATIN LADIES GYM SUIT, LATE 1910-1920s

USD 400 - 600

Black silk satin belted V-neck tunic w/ attached bloomers, alternating rows of white & yellow soutache to belt, tunic hem & bloomer cuffs, paired button closures at SHs, label "Women's Apparel Sports Section", B 47", W 50", L 40.5", (light wear, some cords fraying) excellent.



32: THREE KNIT BATHING SUITS, AMERICA, 1920-1930s

USD 300 - 500

1 blue knit terrycloth w/ white wool stars to square neckline, deep cut back w/ tie, flared skirt from high W over integrated shorts, label "Janzen J. L. Hudson Detroit", B 40.5", W 33", L 31", (small holes back neckline, seat & groin, back tie broken & included); 1 black wool knit w/ white embroidered dots at CF & in overskirt, integrated shorts, attached belt w/ 1 button at CF, button closures at SH, 1920s, label "Manhattan Knitting, Mills N.Y.", B 40", W 37", L 36", (0.5" hole left thigh, holes in left SH blade, skirt shortened); 1 black wool knit w/ pin-tucks over B extending to hem of overskirt, white wool embroidery at B, integrated shorts, B 30"-35", W 26"-30", L 31", (belt missing, moth holes, 2 sm stains), (all w/ light wear) all good- very good.



33: TWO WOOL BATHING SUITS, LATE 1930s-EARLY 1940s

USD 300 - 500

1 ultramarine blue wool knit w/ ribbed neckline diagonally draped at asymmetrical CF accentuated by pin tucking from right H to right B & extending CF hem, adjustable single SH strap attached to right SH extending through CB channel & overleft SH to functional buckle, B 32"-40", W 25"-30", L 33.5", (light wear); 1 yellow knit in stylized diagonal Greek key pattern, tailored B w/ lacing at CF, woven wool patterned SH straps crossed at CB w/ toggle & ringclosure at either side at back neckline, integrated shorts, B 31"-34", W 24"-27", L 31", (tiny holes, light wear) both excellent.



34: TWO BATHING SUITS & ONE MINI DRESS, AMERICA, 1950-1960s

USD 300 - 500

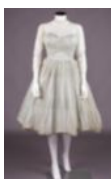
1 cotton red & blue polkadot mini dress, cutaway midriff w/ 4 suspended white rings from tabs at top & bottom, label "Melray", B 34.5", W 30", L 25.5", (B lining disintegrating, underarms fading & w/ 0.5" stain at left) good; 1 cotton bathing suit printed w/ garden & trellis motif w/ deep side pockets & faux pockets at B, label "Alix of Miami", B 35.5", W 26.5", L 28", (4" stain CF hem) very good; 1 white satin striped w/ printed blue stars & blue satin faux corselet W band & SH straps crossing & threaded through loops into tie at CB, label "Ganter Patented Floating Bra, America's Finest", B 29"-32", W 26"-30", L 28", (light wear/discoloration, small holes lining, 0.25" stain CF B) good.



35: TWO BATHING SUITS, AMERICA, 1950s

USD 300 - 500

1 stretch gold lamé swimsuit w/ V-neck, narrow SH straps, plunging square back, graduated diagonal piecing from right SS to left W, CB zip closure, B 31"-33", W 24"-27", L 27", (metal buttons tarnished, lining discolored, 0.75" seam opening right W) excellent; 1 woven blue iridescent swimsuit w/ ray stitched bandeau top w/ single gathered SH strap & diagonal gathered puckers across body, CB gathered into zip closure, label "Kerrybrooks Sea Stars, Sears Roebuck & Co, USA?", B 35"-37", W 26", L 29", (2" stain CF B, tiny-0.25" spot stains & pulls, 1" stain right SS hem) very good.



36: UNLABELED COUTURE COCKTAIL DRESS, 1950s

USD 300 - 500

Long sleeve celadon soufflé over strapless silk satin & guipure lace cocktail dress w/ bubble skirt, CB zip closure, B 38", W 25.5", L 42", (internal horsehair band at hem torn & catching in crinoline, gauze pulling at SHs & around collar, light underarm stains) fair-good. Provenance: From the Estate of Monique Van Vooren.

December Vintage - Decades of Decadence



37: TWO CEIL CHAPMAN COCKTAIL DRESSES, AMERICA, 1950-1960s

USD 300 - 500

1 black taffeta w/ strapless fuchsia silk satin B & CB bow w/ elongated shaped tails, black Chantilly lace overdress w/ broad SH straps, scalloped neckline & full flared skirt, label "Ceil Chapman", B 34", W 27", L 42", (1 snap detached at bow, light wear neckline & hem) excellent; 1 black crepe cocktail sheath w/ broad SH straps, draped CF bodice & black silk satin faux belt w/ flat bow at left CF W, label "Ceil Chapman for Miss Winston", B 36", W 27", L 38.5", (zip pull oxidizing & paint chipping, light underarm wear, tiny pulls) very good. The Costume Collection of the National Society for the Colonial Dames of America.



38: CEIL CHAPMAN PARTY DRESS, 1950s

USD 400 - 600

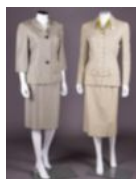
Blush pink silk organza party dress, fitted bodice w/ wide scoop neckline & asymmetrical knife pleating into applied silk cordé bow at right B & into chevron at CB, vertical rows of applied cream silk cording from bodice to flared skirt w/ horizontal row of inverted abstract bows around skirt over flared gored hemline, label "Ceil Chapman", B 33.25", W 24.75", L 49", (staining at underarms, 1.5" hole left W, 6" tear right hem, 2" tear CB skirt godet, sm tear at bottom of zip) good.



39: TWO IRENE SKIRT SUITS, AMERICA, 1947-1952

USD 300 - 500

3-pc grey wool c/o fitted blazer w/ deeply notched collar, CF self-covered buttons, bound slash pocket at left B & right H accentuated by decorative tabs, cafe au lait silk crepe lining, vest w/ metallic Byzantine motif on damask ground, skirt w/ back kick, label "Irene! Exclusively for Bullocks-Wilshire", 1947-1950, B 37", W 27", L 24.5", vest B 37", W 29", L 19", skirt W 25", L 29", (tiny holes & pulls, buckle tarnish, 0.25" hole knee, loose closures) good; 1 navy silk c/o fitted jckt w/ notched collar, crescent shaped B pockets & cut out hemline over Hs, lined in peach silk, partial wrap skirt, overlapping kick at CB w/ Norwich stitch triangle, label "Irene!", 1948-1952, B 38.5", W 34", L 20.5", skirt W 27", L 27", (1 tiny hole & stains) excellent.



40: TWO TATTERSALL CHECK IRENE SKIRT SUITS, AMERICA,

USD 300 - 500

1 twill silk tattersall check c/o jacket w/ notched collar, oversized CF button closures, glove length sleeves & decorative H tabs, matching skirt w/ CB vent, both lined in green silk, 1950-1954, label "Irene! Exclusively for Neusteter & Denver", B 38", W 32.5", L 25.5", skirt W 26.5", L 25.75", (1 tiny hole & stains, pit pads damaged, 1" tear CB skirt); 1 linen tattersall check skirt suit w/ green linen lapels & extended tabs w/ single button closure, CF button closure, applied bias cut W band w/ double tabbed closure at either side of CF, matching skirt, lined in green silk, label "Irene!", 1950-1954, B 40", W 31", L 27", skirt W 27", L 29.25", (small holes, lining w/seam openings & stains, sm seam opening at CB skirt, closures detaching) both good.



41: THREE IRENE JACKETS, AMERICA, 1947-1952

USD 300 - 500

1 black silk surah w/ elaborately cut & inlaid yoke, CF self covered & 2 abalone buttons w/ cast Samurai motif, watch pocket right H, lined in cream silk, 1952, label "Irene, Indianapolis", B 38", W 30", L 25", (8" seam opening lining); 1 navy wool twill/ round cross over collar, fitted W created by B darts extending to floating pointed tabs at W w/ single button closure to conceal H pockets, lined in navy silk crepe, 1948-52, label "Irene Exclusively for Neiman-Marcus", B 39", W 30", L 27.5", (tiny hole right B); 1 grey wool w/ pieced & notched collar, graduated CF buttons, slash pockets at B & inset H pockets, glove length SLVS, lined in nutmeg silk, label "Irene!", 1947-52, B 41.5", W 33", L 25", (all w/ small stains) all very good.



42: THREE PIECE INTERCHANGEABLE BONNIE CASHIN ENSEMBLE,

USD 300 - 500

All w/ label "Sills, A Bonnie Cashin Design" & c. 1964-1970: 1 plaid wool double weave overcoat in shades of brown, cream & black w/ tabbed B pockets & CF w/ brass toggle closures, vertical slash pockets at Hs & brown leather piping throughout, B 44", L 41.5", (buckles scratched & tarnished, light wear); 1 brown wool jersey dress w/ broad front cowl neck extending to tails at back w/ brass harness clip closure & leather bound keyhole at CB, B 42", W 37", L 44.5", (tiny hole W, buckles scratched & tarnished); 1 brown leather dress w/ hidden brass snap closures at CB, B 42", W 36", L 42", (light stains right B & W, wear to leather at SHs, tiny holes/divots under CB closure)

December Vintage - Decades of Decadence



43: TWO BONNIE CASHIN COATS, AMERICA, 1967-1974

USD 400 - 600

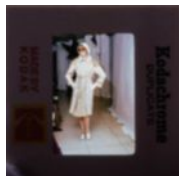
1 lime green cotton duck coat w/ leather collar & faux backpack w/ straps from SHs extending over back to oversized pocket at CB, brass CF snap closures, oversized inset H pockets, self lining, 1968-1974, B 44", L 30.5", (wear to piping & hem, metal tarnished, tiny spot stains); 1 bubblegum pink cotton duck coat w/ pink leather collar & piping, CF brass toggle button closures, pink faux fur lining, label "Sills, A Bonnie Cashin Design", 1967-1972, B 49", L 32.5", (buckles scratched & tarnished, leather collar & piping worn, tiny spot stains, lining worn) both good.



44: TWO BONNIE CASHIN SUEDE ENSEMBLES, AMERICA, 1968-1980

USD 300 - 500

Both w/ label "Sills, A Bonnie Cashin Design": 1 turmeric suede ensemble c/o self-belted trench coat & matching trousers w/ brass toggle closures at CF, pockets & at W closures on pants, 1969-1972, coat B 45", W 42", L 43", pant W 29.5", L 41", inseam 29", (metal tarnished, light wear at seat, lap & W band, tiny-0.5" spot stains); 1 mustard brown sueded leather ensemble c/o kimono style jacket w/ leather edging at collar, CF, cuffs, W & belt, brass toggle closure at W band of trousers, 1968-1972, B 48", L 32.5", pant W 27.25", inseam 29.5", (pinholes in lapel, light wear, tiny spot stains, metal tarnished) both good; t/w blue cotton poplin coat w/ tattersall check lining, label "Bonnie Cashin Weatherwear for Russ Taylor", 1974-1980, B 43", L 41.5".



45: BONNIE CASHIN COAT W/ PATTERN, DESIGNER SKETCH &

USD 300 - 500

Silk & wool basket weave overcoat w/ tan suede SH patches, belt buckle closure at throat & as decorative element on sleeves, tan suede tie belt, CF hidden brass snap closures, single deep box pleat from collar to hem at CB, label "Sills, A Bonnie Cashin Design", B 48.5", L 42", (suede worn & in need of cleaning, light wear, metal tarnished) good; 1 nearly complete tagboard sewing pattern; 2 slides from runway; designer sketch. Ohio State University Historic Costume & Textiles Collection.



46: BONNIE CASHIN COAT W/ PARTIAL PATTERN & SLIDES,

USD 300 - 500

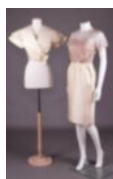
Cream & heather double faced wool coat w/ tan leather tie belt & bindings to caped collar, CF opening, cuffs & hem, oversized H pockets, label "Sills, A Bonnie Cashin Design", B 44", L 45.5", (leather belt lightly worn w/ 0.5" seam opening 1 end, minor wear SHs & neckline, light stains) good; 1 partial sewing pattern for sleeve & caped collar, (worn & creased) as is; 2 runway slides; t/w 1 unlabeled Bonnie Cashin brown & pink knit overcoat, open B up to 58", L 40.5", (shedding). Ohio State University Historic Costume & Textiles Collection.



47: THREE BONNIE CASHIN JERSEY DRESSES, AMERICA, 1970s

USD 300 - 500

2 nearly identical long sleeved jersey dresses w/ cowl necks over leather bindings at yoke & H pockets, both unlabeled Bonnie Cashin: 1 maroon, B 44", W 40", L 43", (0.5" seam opening right B dart & 0.25" left SH seam, 13" CB hem facing falling, 0.25" repair CB above hem) good; 1 black w/ leather belt, B 44", W 40", L 43", (light underarm stains/wear) very good; 1 grey & white striped jersey dress w/ extended cowl neck in shades of grey & cream, label "Sills, A Bonnie Cashin Design", B 42", W 37", L 37.5", (0.5" & 1" stains CF B, 0.5" seam openings left & right B darts) good.



48: PAULINE TRIGÈRE COCKTAIL DRESS & JACKET, AMERICA,

USD 300 - 500

Cream twill silk shantung ensemble c/o cropped jacket w/ oversized scalloped shawl collar to threaded tie closure w/ single snap at left front W, dress w/ woven polka dot silk chiffon bodice in lavender & cream w/ keyhole opening below slender tie closure at nape & attached silk shantung skirt, CB zip closure, label "Pauline Trigère", jacket B 36", W 25.5", L 17.5", dress B 31.5", W 24", L 41", (cluster of tiny-1.5" holes at dress underarms, underarm stains to both, 2 small stains right SH blade dress & 2 light 1" stains jacket B, left underarm shattering on jacket) fair. Ohio State University Historic Costume & Textiles Collection.

December Vintage - Decades of Decadence



49: TWO TRIGÈRE AFTERNOON DRESSES, AMERICA, 1950-1960s

USD 300 - 500

Both w/ label "Pauline Trigère": 1 scarlet crepe shift dress, bias yoke w/ high draped collar at front, CB button closures & fitchet pockets, B 38", W 38", L 42", (scattered tiny pulls, tiny-0.5" spot stains); 1 heather cream double knit jersey dress w/ raglan sleeve & nipped W w/ inlaid shaped band, china silk lining, B 40", W 27", L 40", (tiny moth holes left B) both very good. Ohio State University Historic Costume & Textiles Collection.



50: TWO TRIGÈRE DAY DRESSES, AMERICA, 1960s

USD 400 - 600

Both w/ label "Pauline Trigère": 1 cerulean blue novelty crepe belted dress w/ detached cowl collar fastened at CF w/ spaghetti ties through vertical bound button hole & w/ CB self-covered button closure & reverse dart tabs from front Hs, glove length sleeves, narrow self belt w/ 2 decorative brass buckles, B 39", W 28", L 43", (underarm stains, tiny-0.25" stains, belt worn/torn) very good, belt damaged; 1 pink double knit dress, square armhole w/ set in sleeve, self tie belt, lined in china silk, B 42", W 40", L 40", excellent. Ohio State University Historic Costume & Textiles Collection.



51: ONE TRIGÈRE & ONE UNGARO DRESS, AMERICA & PARIS,

USD 300 - 500

1 jersey day dress printed w/ diagonal wide ribbon stripe plaid w/ elbow length sleeves, CB W tie & zip closure, 1960s, label "Pauline Trigère", B 41", W 26"-34", L 42.5", (paint at zip chipping) excellent; 1 black silk in woven imitation ostrich leather pattern w/ sweetheart neckline, controlled draped pleating to body & narrow knife pleated hem ruffle, extended horizontal SHs knife pleated to armhole, zip at cuffs & CB, 1980s, label "Ungaro Parallelele Paris", B 35.5", W 30", L 41", (tiny spot stains & 0.25" worn spot at zip) very good. Ohio State University Historic Costume & Textiles Collection.



52: OSCAR DE LA RENTA & GUY LAROCHE DAY DRESSES, AMERICA &

USD 300 - 500

1 black crepe dress w/ pleated silk taffeta Bermuda collar, looped button closures, strong SH, long sleeve, late 1970s, label "Guy Laroche Paris", B 37", W 36", L 45", (slip N/I, 0.5" stain right collar) excellent; 1 brown knit cashmere long sleeved dress w/ narrow standing collar, broad attached hem band, silk satin lining, 1980s, label "Oscar de la Renta, Made in USA", B 37", W 32", L 38", (tiny hole at left CF B, light wear) very good.



53: EMILIO PUCCI PARTY SHEATH, FLORENCE, 1960s

USD 400 - 600

Sleeveless sheath in fine cotton velveteen printed & woven w/ multi level pile to accentuate motifs in shades of yellow, orange, lavender & black, diagonal pattern at front continuing into vertical mi-parti back w/ CB decorative buttons to tab over hidden snap closures, label "Emilio Pucci Florence, Italy", B 39", W 36", L 38", (lining discolored around neckline, light stains to hem) very good.



54: EMILIO PUCCI SILK JERSEY GOWN, FLORENCE, EARLY 1970s

USD 300 - 500

Printed silk jersey sleeveless V-neck gown w/ bodice in Art Nouveau inspired florals & abstracted trompe l'œil braided bordered bands at neck & around H, drop W w/ attached pink pleated skirt, label "Emilio Pucci Florence, Italy", B 35", W 28", L 57", (light 0.25" spot stains CF B) very good.



55: TWO MISSONI KNIT GARMENTS, ITALY, 1960-1970s

USD 300 - 500

Both inspired by 15th C organ pleated capes: 1 merino wool knit coat in olive green bouclé & black mesh worked into graduated ribs flaring from yoke & gathered over B & cuffs, label "Missoni", open B 40"-54", L 41.5", (light wear & minor pilling); 1 ribbed black silk & wool knit cape, extended collar to tie or drape at CF, label "Missoni, Made in Italy", SH-SH 18", L 39?", (light wear) both excellent.

December Vintage - Decades of Decadence



56: TWO ISSEY MIYAKE & ONE REI KAWAKUBO GARMENTS, JAPAN,

USD 400 - 600

1 black twill jacket w/ Renaissance inspired pleating, high standing collar, CF button closures, slash pockets at H, label "Issey Miyake", B 40"-48", L 27", (collar misshapen on 1 side) very good; 1 black skirt of double layer of woven reversecontiguous puckered rows, V at CF & CB hem w/ finished openings, label "Rei Kawakubo", W 28", L 23"-27", (tiny light spot stains at seat) very good; 1 aubergine pleated smock w/ printed in oversized subtle checkerboard, let out pleats from SHs,raglan sleeves, shirt collar, CF button closures, label "Issey Miyake?", B 46"-66", L 33", (0.5" pull left of CF above hem) excellent.



57: ISSEY MIYAKE REVERSE PLEAT DRESS, JAPAN, AW 1989

USD 800 - 1,200

Black synthetic convertible columnar dress w/ undulating wedged pleats, label "Issey Miyake", B 28"-40", W 26"-36", L 53.5", pristine.



58: COMME DES GARÇONS LAME COAT DRESS, JAPAN, S/S 2001

USD 300 - 500

Textured synthetic gold lamé coat dress w/ faux jacket, offset front zip closure, vinyl abstract camo bands at CF B & W, label "Comme des Garçons", S/S 2001, B 36.5", W 31", L 43.5", (tiny spot stains, bands of tarnish & larger 4.5" x 1" area at seat, small pulls) very good.



59: CLAUDE MONTANA CAR COAT, PARIS, LATE 1980s

USD 300 - 500

Black wool blend coat w/ standing cross over collar, single button at left breast, raglan sleeve w/ single button at cuff, quilted twill silk lining, label "Claude Montana, Made in Italy", CH 44", L 35.5", (buttonholes at CH worn) excellent.



60: LORO PIANA RAINCOAT, ITALY, 1992

USD 200 - 400

Black rain jacket w/ leather collar, detachable hood, raglan sleeves, cargo pockets, label "Loro Piana? & ?Horsey, approved by Fise", made for the Italian team on the occasion of the games in Barcelona ?92 and reproduced in a limited series,CH 44?-48?, L 31.5?, (leather collar lightly worn, stains to lining at CB neck, tiny spot stains) good.



61: PIERRE CARDIN BLAZER, PARIS, EARLY 1970s

USD 300 - 500

Twill wool blend in open triple striped plaid in shades of navy, grey & oatmeal w/ wide notched lapel, 2 CF button closures, printed ?Pierre Cardin? lavender lining & label "Pierre Cardin Boutique Line, Paris, New York", CH 41", L 31", SH-SH 18", (light 6" stain to right sleeve, light generally wear) good.



62: FENDI REVERSIBLE FUR & CASHMERE COAT, ITALY, c. 1983

USD 400 - 600

Reversible cropped hooded fur coat in khaki green cashmere reversing to gray/brown sheared pieced muskrat w/ fur cut fringe loops on all edges, patch pockets, wide cut drop SH, large self button & loop to 1 side, c. 1983, label "Fendi Alta Moda", B 60", L 35"-39", (few loops undone, few 0.25" spot stains to lining at seat, light wear at back of neck & underarms, cashmere discolored & worn at neck & SHs) good. Museum at FIT.

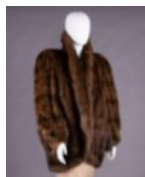
December Vintage - Decades of Decadence



63: SQUIRREL FUR COAT & DOLMAN CAPE, AMERICA, 1962 & 1947

USD 300 - 500

Slight A-line coat of brown squirrel fur w/ Peter Pan collar & seam pockets c. 1962, label "Maximillian" New York, B 40", L 39.5", (wear around neck, missing 2 CF closure loops); 1 H length dolman style cape of dyed brown squirrelfur w/ stand collar in back, arm slit at either side, c. 1947, label "Madden's" Ottumwa, Iowa, SH-SH 18", L 23.5"-28", (worn at CF opening & collar) both very good. Museum at FIT.



64: RUSSIAN SABLE COAT, AMERICA, c. 1980

USD 300 - 500

Short cocoon style hip length fur coat in dark brown natural Russian sable w/ convertible shawl collar, slit H pockets lined in cocoa velvet, elasticized cuff, America, c. 1980, B 58", L 35", (label removed, fur misshapen at back of neck) excellent. Museum at FIT.



65: BEN KAHN SABLE COAT, AMERICA, c. 1980

USD 300 - 500

Hip length fur coat in dark brown sable w/ convertible collar, cocoa velvet lined slit pockets at H, c. 1980, designed by Ben Kahn, B 48", L 34", (label removed) excellent. Museum at FIT.



66: BILL BLASS MINK COAT, AMERICA, 1970-1980s

USD 400 - 600

Ranch mink fur coat w/ free front & convertible collar, label "Bill Blass Furs" & w/ "D.G.G" monograph at label, B 40", W 44", L 48", (inner W ties detaching, 0.5" tear bottom right pocket opening) excellent.



67: CHRISTIAN DIOR ARCTIC FOX COAT, 1980s

USD 500 - 800

Ankle length arctic fox fur coat w/ bone leather vertical inlays, convertible collar, full sleeve w/ faux cuff, label "CD de Christian Dior Fourrures" & w/ "Carol A. Newman" embroidered near label, B 47", W 52", L 53", (inside cuffs worn, light 1.5" x 1" stain lining near hem) excellent.



68: THREE MATCHING KNIT CARDIGANS, AMERICA, c. 1922

USD 300 - 500

All Rayon machine knit w/ long sleeve, lapel, collar, cuffs in contrasting banded stripe, H band in contrasting geometric block pattern, all w/ original tasseled tie belts: 1 cream & sky blue, open B, SH-SH 16", L 28", belt 1.25" x 76.5", (few tiny pulls & age spots); 1 black & cream cardigan, open B, SH-SH 16.5", L 29", belt 1.25" x 74.5", (left belt loop unravelling); 1 mauve & sky blue, open B, SH-SH 17", L 29.5", belt 1.25" x 77", (tiny pulls, discoloration collar lining), (all w/ worn/messy tassels on belt) all very good- excellent. Museum at FIT.



69: THREE KNIT SWEATERS, AMERICA & ITALY, 1930s

USD 300 - 500

1 mauve wool knitted in purl faced rib, red bakelite buttons w/ self shanks at neck, America c. 1935, B 38", W 26"-32", L 19.5"; 1 cotton blue-grey, green & tangerine striped garter stitch sweater, self covered buttons at collar, Pittori, Italy, c. 1938, B 31"-36", W 24"-26", L 18", (fading/discoloration, 1" repair left underarm & 0.5" right, 1" repair left cuff) good; 1 blue silk belted pullover w/ ribbed Raglan yoke extending to sleeves, self belt w/ wooden buckle & 2 functional wooden buttons at clavicle closures, America c. 1930, B 35", W 29"-33", L 20", belt 1.5"-2.25" x 33", (tiny-0.25" stains, 0.5" hole CF W, 0.5" seam opening left cuff) good (all w/ light wear); t/w 1 white loosely knit sweater, America c. 1925. Museum at FIT.

December Vintage - Decades of Decadence



70: HENRY A LA PENSEE & UNLABELED KNIT ENSEMBLES, FRANCE &

USD 400 - 600

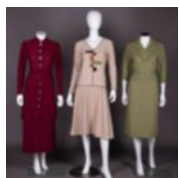
3-pc dark green synthetic bouclé w/ leaf motif lace knit top, America c. 1948, cardigan SH-SH 17", L 20.5", top B 32", W -28", L 20.25", skirt W 32"-34", L 26", (0.5" hole right cuff, 0.5" stain skirt hem); 3-pc ensemble c/o tunic & skirt in synthetic bouclé lace knit feather motif, crochet belt & ball drops at CF, America c. 1940, top 41"-44", W 38"-42", L 24.5", skirt W 30"-34", L 31.5", belt L 49", (tiny pulls, skirt elastic shot); 1 navy blue fine cordé skirt suit w/scarlet sprats head embroidery, faux front pockets & peekaboo scarlet inlay, c. 1942, label "Henry à la Pensée, NY", B 36.25", W 31.75", L 24.5", skirt W 29", L 25.5", (metal tarnish, collar facing shatter, W tape detaching/frayed) (most w/ light wear) all good- very good. Museum at FIT.



71: JANTZEN & BLECHMAN HUMOROUS GRAPHIC SWEATERS, AMERICA,

USD 300 - 500

Two cotton fly ?hi? & airplane motif sweaters in 2 colored stockinette knit patterns in alternate colorways: 1 red on blue ground, America c. 1947-1949, Blechman, CH 31"-34", L 22", (0.25" hole back W band); 1 chartreuse on olive ground, America c. 1947-1949, Blechman, CH 30"-34", L 22.5"; 1 wool crew neck pullover w/ red outlined umbrellas & ?RAIN RAIN GO-AWAY? on navy ground w/ allover pattern of white raindrops, America c. 1940, label "Jantzen", CH 41", W 24"-36", L 24", (tiny pulls) (all very lightly worn) all excellent. Museum at FIT.



72: THREE KNIT ENSEMBLES, AMERICA, 1940s

USD 300 - 500

3-pc maroon Rayon bouclé w/ swirl corded applied trim, America c. 1940, dress B 34", W 30", L 34.5", skirt W 29", L 31.25", belt Wd 2.75", L 27.75", (sm pulling at closure); 2-pc purl surface knit in cream & multicolored Rayon bouclé w/ inlaid Cubist color blocks edged in black, pleated skirt w/ vertical multicolor stripe, America c. 1947, B 35"-38", W 30"-32", L 22.5", skirt W 28"-32", L 26.5", (tiny stains, pleats undone, elastic shot); 3-pc sage green silk w/ complex knitted pattern, ribbed turn back collar, cuffs & W, corded, beaded & embroidered faux necklace, label "Toby Berman", America c. 1948, B 32"-36", W 22"-28", L 19", skirt W 28"-31", L 26.5", belt Wd 1.5", L 26"-29.5", (elastic shot) (all light wear) all very good- excellent. Museum at FIT.



73: NOVELTY SWEATERS, FRANCE, ITALY & USA, 1940-1950s

USD 400 - 600

1 black wool w/ zip at CB, France, c. 1958, B 40"-46", W 20"-26", L 19", (0.25" holes at W, seam openings inner collar); 1 black wool/silk blend turtleneck w/ multicolored rib knitted festoons from neck, America, 1950s, B 36"-38", W 26"- 28", L 20", (0.5" spot stain CF dark blue streamer); 1 black merino wool w/ Old Gold Cigarette appliqué w/ bullion embroidery, paste rubies for embers & coins w/ woven phrygian capped figures, 1940s, label "Henry a à la Pensée, Made in France", B 35", W 23.5"-29", L 19.5", (tarnish, spot stains to appliqués, tiny-0.25" holes); 1 black wool 3/4 sleeve, label "Marchesa de Grésy Design, Made in Italy", B 33", W 26.5", L 18.5", (all w/ light wear) very good- excellent. Museum at FIT.



74: FOUR SWEATER SETS, AMERICA, 1950s

USD 300 - 500

2-pc pink cashmere twin set pullover & cardigan w/ silk shantung trim, America c. 1958, label "Miss Isabel Design", cardigan B 41"-45", W 29.5"-33", L 33", pullover B 37"-40", W 26"-30", L 20", (small stains cardigan back, pullover more worn); 2-pc peach cashmere twin set cardigan & pullover w/ rat tail woven & spiral appliqué, America c. 1958, label "Maurice Handler", cardigan B 38"-42", W 27"-32", L 20", top B 38"-40", W 23"-28", L 19", (faux pearls worn); 1 cotton candy pink cashmere cardigan w/ pink appliqué florals, America, 1950s, B 38", W 28", L 19", (tiny spot stains); 1 light blue Angora cardigan w/ white collar trim, B 35.5"-39", W 26"-30", L 20.5", (0.5" stain back collar) (all w/ light wear) very good- excellent. Museum at FIT.



75: FIVE ECLECTIC SWEATERS, AMERICA, ITALY & TAIWAN,

USD 300 - 500

1 cream synthetic w/ blue & red cutouts, ?Made in Taiwan?, c. 1977, B 22"-28", W 21"-26", L 22.5", (2.5"x1.25" stain left slv, 0.25" hole left cuff); 1 cream wool ribbed turtleneck w/ circle zip pull, America c. 1966, label "Bonwit Teller", B 24"-40", L 25.5", (0.25" stain left SH blade, zip sticky); 1 cotton man's rainbow striped, c. 1971, label "Creations Perkin's", CH 30", L 23.5", (stretched slightly); 1 dark brown wool, Italy c. 1965, label "Marchesa di Gresly", B 28"-32", W 25.5-30", L 26", (tarnish, right zip does not open); 1 nautically styled cream wool blend w/ wool felt appliqué & gold embroidered ship wheel, Italy c. 1968, label "Laura", B 28"-33", L 22.5", (sm stains) (all w/ light wear) all good- excellent. Museum at FIT

December Vintage - Decades of Decadence



76: GENEROUS GROUPING OF VINTAGE BANGLES, 1940-1960s

USD 300 - 500

Twenty five vintage bangles including carved floral & Pierrot portrait: Wd range 0.25"-1.625", circ. range 7.25"-8.375": Including: clear, mauve & metal bangles, (tarnish); very thin tan & dark brown marbled, (few tiny chips inner edge); rounded marbled wine red; clear w/ internally carved flowers, (residue inside carving, crack on 1 side, light discoloration); dark green carved, (light residue in grooves); maroon asymmetrical w/ 1 flat face; (all w/ light scratches/scuffs) all fair- excellent.



77: FOUR SHULTZ & J. EVANS BANGLES, AMERICA, MODERN

USD 400 - 600

4 bangles signed "Shultz": 1 wide navy blue w/ layered cherry red & yellow oval, 2 identical black w/ alternating green & red spot motif, 1 red w/ alternating yellow & black lozenge motif; 1 wide clear w/ black bowtie motif, signed "J. Evans"; 3 vintage bangles: 1 black w/ silver concentric circles, 1 black & white striped, 1 black glass, all Wd range 0.25"-1.25", circ. range 7.5"-8.25", (most w/ light scratches/scuffs/dyscoloration) all very good- excellent.



78: FOUR BRUCE PANTTI & VINTAGE BANGLES, MID 20TH CENTURY &

USD 400 - 600

Wd range 0.25"-1.875", circ. range 7.75"-8": 4 bangles signed "Pantti": 1 bifurcated matte yellow & marbled apricot w/ marbled green spot motif, 1 marbled apricot w/ matte cream spot motif, 1 bifurcated marbled green & matte cream w/ marbled fuchsia spot motif, 1 bifurcated & marbled apricot & green; 5 vintage bangles: 1 light green squared, 1 darker green squared, 1 narrow orange, 1 rounded edge green, (0.25" red mark inside edge), 1 wide red/orange marbled, (all w/ light wear/dyscoloration/light scratches) very good- excellent.



79: FIVE CELLULOID PRISON RINGS, AMERICA, 1930-1940s

USD 400 - 600

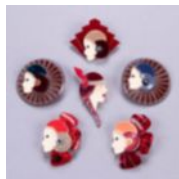
All w/ Wd of 0.75": 1 ring w/ B&W photo of man, circ. 48 mm, US size 4.5; 1 w/ round photo of woman, circ. 60 mm, US size 9.5, (few tiny chips); 1 w/ photo of man in hat, circ. 61 mm, US size 10, (photo faded w/ very small chip); 1 w/ photo of younger man, circ. 58 mm, US size 9, (photo damaged/faded); 1 w/ girl in square setting, circ. 60 mm, US size 9.5, (photo faded), (all w/ light wear/scratches/scuffs) 1 fair, 4 good-very good.



80: PAVONE GALALITH JEWELRY, FRANCE

USD 400 - 600

All signed "Pavone": 1 ombré orange cat silhouette on scarlet marbled elasticized bracelet, Wd 1.5"-2.5", circ. 6.25"-12", (minor ghosting ears); 3 brooches: 1 ombré orange to red cat silhouette w/ stylized whiskers on teal skyline, 2" x 2.5", (whiskers bent slightly); 1 front facing orange to red ombré fat cat w/ applied paste eyes & painted nose, mouth, whiskers & claws, 1.75" x 2"; 1 seated red ombré cat w/ inserted curled wire tail applied paste eyes & painted nose, mouth, whiskers, 3.25" x 2.25", (all w/ minor scratches/scuffs/knicks) all good- very good.

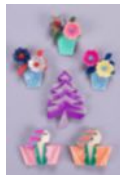


81: SIX LEA STEIN LADY PINS, PARIS

USD 400 - 600

All signed "Lea Stein Paris": 2 Collaquette Art Deco Lady pins: 1 w/ blue headcovering, 2.25" x 2.25"; 1 w/ blue & maroon headcovering, 2.25" x 2.25"; 2 Carolle Flower Lady pins: 1 w/ cherry red snakeskin head covering & 1 w/ apricot snakeskin head covering: 1.75" x 2.5"; 1 Native American woman, 3" x 1.25", (tiny chips & minor ghosting); 1 Princess Lea pin, w/ stylized red deco motif, 2" x 2.5"; (all w/ minor scratches/scuffs/wear) all good- excellent; t/w 1 bakelite lipstick tube on cord

December Vintage - Decades of Decadence



82: SIX LEA STEIN CARMEN JOAN CRAWFORD & FLORA BROOCHES,

USD 400 - 600

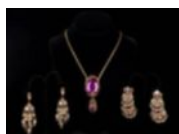
All signed "Lea Stein Paris": 1 stylized alternating lavender & purple snakeskin fir tree, 2" x 3.25", 3 Potted Flower brooches: 1 matte teal pot, 1.75" x 2", 2 dusty blue snakeskin pots, 1 w/ pink & yellow flowers, 1 w/ blue & silver flowers, 2" x 1.75", 2 Carmen Joan Crawford pins, 1 w/ coral coat, 1 w/ pink coat, 2" x 2.25" (all w/ minor scratches/scuffs/ghosting/discoloration) all good-excellent; t/w 1 bakelite greyscale & brown lipstick tube on cord.



83: SIX COSTUME BROOCHES, 1850- EARLY 20TH C

USD 300 - 500

1 black enamel w/ faux pearls & gold scrolling leaf motif frame & central floral, 1870-1880s, 1.375" x 1.75", (dirty); 1 oval goldstone w/ glass imitation micro-mosaic & beveled glass backed compartment w/ cloth fragment, 1.75" x 1.5", (frame warped); 1 love knot brooch of woven hair, c. 1850, 0.75" x 1.5", (0.25" hole in mesh); 1 round gold-tone w/ 2 dangling baubles, 1.25" x 2.25"; 1 abalone, 2.25" x 1.25", (dirty); 1 "Mizpah" brooch w/ removable glass faced back, British Hallmarks, original box, 1890s, inscribed "Kendall Smith Newark, NJ" & "SBR", (illegible date & city marks, box worn & lightly dented, pin tarnished), (all w/ tarnish & light scratches) all good- very good.



84: TWO PAIR EARRINGS & ONE AMETHYST PENDANT, LATE 19TH C &

USD 300 - 500

1 pair chandelier earrings w/ graduated pearls & foil backed old mine cut paste, screw backs, 1.75" x 3.5", (tarnish & oxide buildup); 1 necklace w/ amethyst pendant & drop in gold tone crenulated frame, 1910s, pendant 1.25" x 3.25", chain L 19", (minor tarnish/oxidization, light scratches); 1 pair Ottoman inspired wreath drops w/ faux pearls, paste single cuts, on filigree backing, modified w/ clip backs stamped "Eugene" 1.5" x 2.5", (tarnish, severe oxidization, wear to faux pearls) all good.



85: STERLING SILVER PASTE SUITE, EARLY 20TH C

USD 300 - 500

Faux pearl & SS suit w/ articulated cast links threaded w/ double strand of faux seed pearls: earrings w/ faux pearl drop, 2.5" x 0.5", (ear wires replaced & mismatched), 1 choker necklace w/ box clasp stamped "Sterling", Wd 0.5", circ. 13", 1 bracelet w/ box clasp stamped "Sterling", Wd 0.5", circ. 7.5", (all w/ tarnish/light wear, faux pearls worn) all good.



86: PAIR OF GILT BRACELETS, MID 19TH C

USD 400 - 600

Pair of gilt bracelets w/ cast imitation filigree & crenulated scrolling florals, mid 19th C, Wd 0.5"-1.75", circ. 6.25"-6.75", (worn, tarnish/oxidization, band misshapen & decorative pieces bent, scratched) good.



87: FOUR HAIR ORNAMENTS, 1910-1930s

USD 300 - 500

2 matching evening hair pins w/ pearlized sphere & chain drops w/ graduated faux pearl drops, 1910s, 2" x 2" x 6.75", w/ 9" chains, (scratched & worn, tarnish & oxidization, coating of 1 globe cracked, discoloration, metal pins warped) 1 poor, 1 good; 1 black & clear stylized shell burst celluloid comb, 1920s, 6.5" x 6.5", (light scratches, 0.75" residue from sticker CB) excellent; 1 bejeweled butterfly celluloid hair comb w/ blue & green rhinestones & painted carved imbricated scaletcracy, 1930s, 4" x 6", (light scratches, 0.25" warped/melted spot left wing near antenna) very good.



88: GROUP OF FASHION JEWELRY, 19TH -1920s

USD 300 - 500

1 narrow cuff bracelet w/ black enamel & faux pearls, Wd 0.25", circ. 6.75", (coating on pearls wearing off, tarnish, 1 pearl detached & included, 1 missing); 1 headband of 4 strand braided brass wire configured into pattern w/ central diamond & stylized eye motifs, encasing rows of rhinestones, 1920s, Wd 1.25", L 13.25", (tarnish, few damaged links); 1 tortoiseshell cuff bracelet, 19th C, Wd 1.25", circ. 6.75", (light scuffs, small chip, hinge broken & w/ chipping); 1 rhinestone articulated cuff w/ pintube clasp, 1880-1890s, Wd 2", circ. 7.25"; 1 gilt circlet necklace, Wd 0.25", circ. 13", (tarnish, 0.75" patch where plating removed) all fair- excellent; t/w Czechoslovakia serpent scale necklace w/ glass beads of faux jade & carnelian, 1920s.

December Vintage - Decades of Decadence



89: THREE DECORATIVE SHOE & BELT BUCKLES, 1750s & LATE

USD 300 - 500

1 pair mans mourning shoe buckles w/ bezel set black glass faux jet, original wood & imitation shagreen varnished paper box w/ section for matching buckles for knee breeches, 1750s, 2.75" x 3.5", (1 missing stone, tarnish/rust, some chips to glass, dirty, box worn) fair; 1 cast belt buckle w/ bearded & horned Neptune & decorated scallop shells, faux marcasite, late 19th C, 3" x 5.5", (stone loss, plating worn, tarnish to back) good; 1 gilt & imitation coral belt buckle in leaf & filigree tracery, 1930s, 3.5" x 2", (minor tarnish, light scratches to rods) very good.



90: STERLING SILVER CHATELAINE BROOCH & CARD CASE,

USD 400 - 600

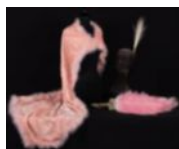
1 sterling silver chatelaine brooch w/ vinaigrette, retractable mechanical pencil, small covered case, center medallion w/ escutcheon, celluloid leaflet notepad, 1890s, 4" x 1.75" x 1", w/ chains 9.75", (tarnished, light scratches, one replaced w/unmatched sterling case w/ chased design, writing in notepad) & w/ matching lorgnette to interchange w/ escutcheon notepad, 1890s, 1.75" x 5.25" x 0.75", extended 5.25" x 6.25" x 0.75", (small dents, lenses scratched); 1 small sterling silver chased card case, stamped "Silver", 3.75" x 3.25" x 0.5", (tiny dents, scratched, lining shattered, some tarnish) all good- very good.



91: ONE TIARA & TWO CIRCLETS, LATE 19TH-EARLY 20TH C

USD 300 - 500

1 steel rhinestone tiara w/ gothic arch & rhinestone 3 bud sprays, Wd 1.5", partial circ. 14.75", (tarnished, misshapen, 1 missing stone left of CF) excellent; 1 rhinestone circlet in laurel wreath motif, late 19th C, Wd 1.5", circ. 18.25", (frame broken & repaired in several places, stone loss, tarnished, cloudy stones) poor; 1 French jet laurel wreath circlet hair ornament, Wd 1.5", circ. 14", (stone loss, frame rusting CB join, paint chipping, misshapen) good.



92: THREE FEATHERED ACCESSORIES, 1920-1930s

USD 300 - 500

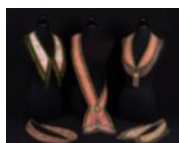
1 feather trimmed voided panné velvet throw trimmed w/ fine dyed marabou feather edging, backed w/ printed moiré cape, 36" x 60", (feathers shedding, light discoloration/stains, tiny-0.75" spot stains) very good; 1 egret feather & steel headpiece set w/ rhinestones, 6.5" x 5" x 15", partial crown circ. 12.75", (feathers broken & worn, tarnished, slightly warped) very good; 1 pink ombré dyed ostrich feathered fan w/ base & handle covered w/ ribbon rosettes & gold lamé over blue silk, 11.5" x 30.5", (tips of feathers stained, 2 broken feathers, lamé tarnished, handle discolored/wear) fair.



93: SIX FEATHERED OR VELVET ACCESSORIES, 1870s- MID 20TH C

USD 300 - 500

3 fans: 1 peacock, 9.25" x 14.75", (very worn, handle coming undone & dirty); 1 white feather & marabou w/ lacquered paper insect motif in shades of blue, glass bead & bone handle, China, 10.5" x 16.25", (tarnish); 1 white duck feathered, 9.5" x 13.25", (stains/dyscoloration), (all w/ broken/missing/stained feathers & dirty handles); 1 maroon chenille embroidered velvet hand screen w/ turned gilded wood handle, silk moiré handle, 1870s, 7.75" x 17.25", (worn, braid detaching & tarnished, tiny- 1.75" holes); 1 curled ostrich feather bag, 10" x 15.25", (handle pinned on 1 side, discoloration, worn); 1 pink feathered bag w/ gold lamé ribbons, 8" x 14.75", (tarnish, lining discolored, feathers worn/few missing, residue on mirror) all fair- good.



94: FIVE INDEPENDENT ORDER OF ODD FELLOWS COLLARS & SASHES,

USD 300 - 500

All velvet w/ fringe & embroidered symbols: 1 pink & green sash w/ embroidered dove, daffodils & beehive, label "The C.E. Ward Co. Regalia Costumes & Supplies New London Ohio Past Noble Grand", inner circ. 28", Wd 1.75"-3.75", (dried residue lining, velvet crushing); 1 purple w/ sequined star trim, inner circ. 35.25", Wd 1.75"-3.5"; 1 pink & olive w/ white beehive, label "The Ward-Stilson Co. MFRS of Society Goods Anderson Incl." inner circ. 54", Wd 3.5"; 1 tan & green, innercirc. 28.5", Wd 1.75"-3.5", (missing fringe); 1 pink & green w/ gold glass beads & beaded fringe, inner circ. 33", Wd 2"-3", (cord detaching, baubles worn), (all w/ trim tarnish, sequin/bead loss, wear & discoloration) all good-very good.

December Vintage - Decades of Decadence



95: LAME EMBROIDERED VELVET PURSE, MID 20TH C

USD 200 - 400

Heavy floral silver & gold lamé embroidery on panné velvet w/ double hinged gilt frame, moiré silk lining, w/ seating card for the wedding of Joyce Jason & Michael Celf, Mr. Leonel Shine, April 3rd 1955, probably French, 7.75" x 6.25", (frame warped, embroidery tarnished, small pulls, wear to velvet, red marks in lining, discoloration to edges) good.



96: TWO TOOLED LEATHER HANDBAGS, 1910s

USD 300 - 500

1 w/ Art Nouveau inspired stylized floral motif, jadeite & agate locking closure, faux hammered frame, label "Meeker Made" & frame stamped "Jem Co.", 8" x 8", (wear to lacings, plastic pieces on frame lightly scratched, tarnish/oxidization causing green stains); 1 w/ cross motif & blued steel frame stamped "Genuine Gunmetal", 6.75" x 8.5", (lacing worn & unraveling, wear, few stains) both good. t/w dark brown leather bag w/ silver frame, 7.5" x 7.5".



97: THREE TOOLED LEATHER HANDBAGS, MEXICO, MID 20TH C

USD 300 - 400

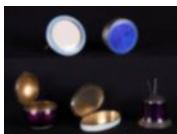
1 w/ horse, stag, agave, saguaro & nopales cacti, 1970s, label "Pure Leather 'Yeo' Hecho en Mexico", 12.25" x 3.5" x 8.25", (flap stiff, strap worn, mirror clouded, sm spot stains at top edge); 1 light brown w/ rose motif, "M Castillo, Hand Tooled, Mexico", 12" x 3.75" x 7", (1" stain right side & 2.75" lower strap, lining separating); 1 large dark brown w/ stylized floral, leather lined w/ multiple compartments, 1940-1950s, 14" x 5" x 11.25", (1.5" stain interior), (all w/ light scratches/wear/metal tarnish) all very good- excellent.



98: TWO WILARDY BOX BAGS, NEW YORK, 1955-1959

USD 400 - 600

1 opalescent white w/ rhinestoned rectangle at front, single handle split, twisted & riveted, self-covered closure w/ silver tone setting, black moiré lining, label "Original Wilardy New York", c. 1955-1959, featured on Page 83 of 'Carry Me', 10.25" x 3.125" x 8.125", (glue yellowing at rhinestone panel, handle & lining, light scratches, lining dirty); 1 marbled cocoa colored lucite w/ floral motif clasp, double shaped handles & maroon lining, c. 1958, featured on page 129 of 'Carry Me', unlabeled Wilardy, 10.25" x 5.25" x 8.25", (lining detaching at corners, very light scratches/scuffs, slight warping/separation of clasp) both good.



99: FIVE ENAMEL TABLE ACCESSORIES, EARLY 20TH C

USD 300 - 500

1 aubergine guilloché enamel pin holder, 1.875" x 1.625", (0.5" x 1" of sticky residue base, cushion worn); 1 spherical aubergine guilloché enamel box, stamped ?GV & Co., 925?, 2? x 2" x 1.75", (lid closes unevenly); 1 bone colored oblong guilloché enamel box, stamped, 2.875" x 1.75" x 0.5"; 1 round guilloché enamel picture frame w/ stand, stamped ?925 S Sterling, Norway?, 2.375" x 2.375", (stain left back), 1 round sapphire blue guilloché enamel boxw/ wreath motif, 2" x 0.125", (all w/ metal tarnish & light scratches/dents/wear) all very good- excellent.

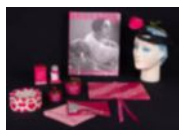


100: TWO GUILLOCHE ENAMEL DRESSING SETS, ENGLAND, 1930s

USD 300 - 500

All L range 1.25"-11.25", Wd range 1.25"-4.5": 3 pc set in powder blue guilloché enamel, stamped ?Healson, England? 1 handled hairbrush, 1 oblong clothes brush, (both w/ bent & broken bristles), 1 blue handheld mirror; 7 pc set in emerald green guilloché: 1 handled clothes brush, (bristles worn), 1 handheld mirror, (backing damaged w/ crack) & 5 jars w/ guilloché lids: 1 empty round, 1 tall cylindrical, 1 round glass w/ white powder, (lip warping), 1 oblong glass w/ contents, 1 rectangular bottle, (all jars dirty); (all pieces w/ tarnish, scratches, small chips, discoloration & wear) all fair- very good.

December Vintage - Decades of Decadence



101: SCHIAPARELLI BOUDOIR ACCESSORIES & SHOCKING! BY DILYS

USD 300 - 500

1 ?Shocking! The Art and Fashion of Elisa Schiaparelli? by Dilys Blum, 11"x13.5"x1.25", (jacket worn, light wear & marks); 4 cosmetic powders or creams, 1950s: cleansing cream, 2.75"x2.5", (tarnish), 1 satchel powder, 2.125"x3.25", 1 night cream, 2.25"x1.75", (tarnish), 1 dusting powder, 5.125"x2.125", (puff stained); 1 large pink lingerie case w/ printed lace pattern, 11"x8.75", (ties worn, 5.75" seam opening lining), 1 silk twill pink scarf, 19.25"x20", (1.25" discolored stripe), 1 small satin handkerchief case, 7"x6", (tiny pulls), 1 fascinator w/ feathered cabbage rose, 8"x10.5"x3", (misshapen, few broken bristles), (all w/ minor wear, discoloration, chips/scratches) all good- very good.



102: TWO PAIR NIKE SHOXS PRODUCTION CONFIRMATION SAMPLE

USD 300 - 500

1 pair black, silver & red Nike Shox Qualify with approval signatures, Ht 4.5", Wd 4.25", L 11.75", size 9, (handwritten inkings inside each shoe near heel, tiny spot stains to laces, light wear), Tae Kwang manufacturer with original CFM production tags, Dan LeBlanc developer for 2010 season; One dark grey & white Nike Shox Turbo + VI Men's sneakers w/ ombré side stripes, Ht 4.75", Wd 4.75", L 11.5", size 9, (silver inkings above soles at instep), Chang Shin manufacturer with original CFM tags, Mike Casey developer, Approved 11-2007 for spring 2008 season. Only one or two production samples ever made for each style. Both in unworn condition.



103: TWO PAIR NIKE PRODUCTION CONFIRMATION SAMPLE SNEAKERS,

USD 300 - 500

1 black Nike Air Vitality in perfect condition with approval signatures, Ht 4.5", Wd 4", L 11.75", size 9, (handwritten inkings at inside edge of outsole on back of left shoe & middle right shoe), Feng Tay manufacturer with original CFM production tags, Dan LeBlanc developer; 1 all white girl's athletic Nike Shox Turbo 11 GS sneakers, Ht 4", Wd 3.75", L 10", kids size 3.5, (handwritten inkings inside each shoe near heel), unworn, original CFM tags, Tracy Prinkii developer. Only one or two production samples ever made for each style. Both in unworn condition.



104: DEADSTOCK ALAÏA FOR TATI ESPADRILLES, FRANCE, S/S

USD 400 - 600

1 pair of woven hemp espadrilles in trademark pink & white vichy print for the "Tati Collection", traditional stitched hem soles w/ applied rubber open sole for grip, c. 1991, inscribed with "Alaïa for Tati", L 9", Wd 3" Euro size 38, (light discoloration to heels & toes) excellent.



105: LARGE HERMES SCARF, PARIS, MODERN

USD 400 - 600

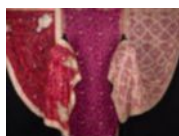
Silk twill scarf w/ jewel mandala, signed ?Hermes, Paris", 34.5" x 36", (few spots where hems unrolling) excellent.



106: ASSUIT SHAWL, EGYPT, 1920s

USD 300 - 500

1 black & silver assuit shawl w/ decorative bands in traditional motifs, 34" x 91", (light fading to ground, two 0.5" repairs near 1 end) very good.



107: THREE BRIDAL DUPATTA, INDIA, MID 20TH C

USD 300 - 500

1 scarlet ground w/ bandhani boteh & knot motifs, corner motifs & border w/ green & silver woven metallic cloth appliqué, bullion, bead, & silk floss embroidery, 91" x 43", (sequin loss, wear to orange borders w/ 2" detachment, wear); 1 pink w/ appliqué metallic braid edged border w/ faux pearls, flowers in twisted cord of pink & green in imitation of beadwork, gold frisées bullion circlets throughout, label "VSI Made in India", 91" x 38", (unraveling to bullion, 1"x2" hole 1 corner & 4" to another, 1"-3.5" holes green border, few small holes, heavy wear); 1 synthetic w/ embroidered floral & foliate border w/ bullion, imitation beetle wings & faux pearls, 80" x 34", (bead paint chipping, unraveling bullion embroidery, sequin loss) all fair- very good.

December Vintage - Decades of Decadence



108: TWO EXCEPTIONAL HAND EMBROIDERED SAREES, INDIA, EARLY-

USD 300 - 500

1 cream silk w/ black cotton embroidery in grid pattern w/ stylized lotus & floral devices, multiple border & spade motifs, "Ras" written in corner, 45" x 232", (3" x 4" stain cluster right border, spot stains, tiny pulls, fringe worn) very good; 1 cream silk w/ green, black, rust & gold cotton embroidery in fan, botteh, spade & rangoli motifs, "Ras" written in corner, 43.5" x 232.5", (pulls, fringe worn) excellent.



109: TWO CEREMONIAL CANOPIES, INDIA, 20TH C

USD 300 - 500

1 cream, brown & pink Shamiana (wedding) tent hanging w/ appliqué & embroidery, inset borders, 82" x 134", (discoloration/fading throughout, small scattered holes & stains, wear to edge loops, 2 rusting staples 1 corner, three 1"-1.5"holes center right loop); 1 cotton howdah canopy w/ central geometric & elephants, border & hanging tabs trimmed w/ ruffled flowers, appliqué crescents & wool tassels, 68" x 68", (baubles worn, flower wear w/ 1 mirror removed, 1"-2"holes 1 side, 1" x 1.25" hole 1 green corner, holes in lining) both good



110: THREE ETHNIC GARMENTS, 1930-1960s

USD 300 - 500

1 huipil of weft wool brocade & cotton ground, Guatemalan, CH 70", L 32.5", (light wear & brocaded thread loss); 1 w/ black silk front panel w/ woven warp stripe borders in turquoise & pink, midnight blue velvet yoke extending to frontpanel w/ geometric embroidery & chainstitch at SHs & across back, inset sleeve & skirt embroidered panels, Iran, probably 1970s, B 35.5", W 38", L 55", (tiny-1.25" white stains, light wear, fraying hem); 1 indigo dyed cotton w/ cotton embroidery & appliquéd multicolor trim, beaded w/ pierced seeds, Thai, 1930s, CH 42", L 27", (fading/discoloration, light wear, minor pilling & bead loss) all very good- excellent.



111: THREE EMBROIDERED SKIRTS, INDIA, MID 20TH C

USD 300 - 500

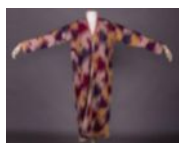
1 white cotton embroidery on white cotton skirt w/ mirror work, W up to 33", L 32", (tiny-1.5" stains, 0.75" seam opening W band); 1 red cotton w/ cotton embroidery & mirror work, label "Made in India", W 28.5", L 33", (label removed & included, rust stains from hanger clips); 1 cotton w/ mirror work & cotton embroidery in multicolor geometric motifs w/ deep border, W up to 36", L 32", (large pulls above hem, tiny spot stains), (all w/ some clouding/cracking/damage to mirrors & light wear) all good- very good.



112: COLORATURA HOODED PONCHO, AMERICA, LATE 20TH C

USD 300 - 500

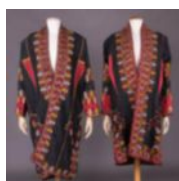
Loden grey wool hooded poncho coat w/ inserted multicolor woven stripes w/ scallop embroidered edging, woven panels applied down CB & on front pockets, stamped silver tone oval medallions strung on black velvet at CF openbetween self-cover decorative buttons over snap closures, label "Coloratura", Wd 52", L 42", (very light wear) excellent.



113: IKAT ROBE, UZBEKISTAN, EARLY 20TH C

USD 300 - 500

Magenta, cream, yellow & indigo silk ikat robe w/ vertical machine quilting & elaborate edging in white, printed lining, CH 44", L 48", (light wear/discoloration incl. dye bleeding from quilting thread, lining pilling, tiny-0.5" spot stains, 0.75" pulled stitches left underarm) good.



114: TWO CHYRPY, TURKMENISTAN, EARLY 20TH C

USD 400 - 600

Both black silk w/ tablet woven borders, sleeve cuff of contrasting red fabric, contrasting red selvage exposed at seams, elaborate hand embroidery to neckline, CF opening, sleeves, cuffs & hem: 1 w/ inserted double underarm godets, red printed cottonlining, CH 50", L 44", (tiny white spot stains, light fraying to cord edging) excellent; 1 w/ printed purple cotton lining, CH 44", L 40", (tiny light spot stains, light fraying, tiny holes & wear spots sleeves & at SH fold lines, 0.5" repair rightelbow) very good.

December Vintage - Decades of Decadence



115: TWO HAND EMBROIDERED BEDOUIN THOUBS, PALESTINE OR

USD 300 - 500

1 cotton twill w/ red & multicolor cotton embroidery in peacock motif, B 45", W 44", L 50.5", (sleeves modified at underarms to make larger, 4.5" repair at W, CF panel partially unpicked at right side, cuffs & neckline edge unraveling, 9" repair front right skirt, 7" seam strain at left skirt, 10" hem lining detaching, wear & sm holes, light general staining) fair; 1 cream synthetic kaftan w/ red cotton embroidery, B 44", W 49", L 56", (pulls, stains right cuff, spot stains, 1.5" x 0.75" stain lap, light wear) good.



116: ROMANEX PRINTED COTTON FURNISHING FABRIC YARDAGE,

USD 300 - 500

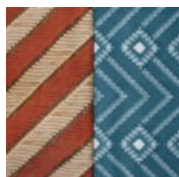
Printed cotton w/ train & passenger cartoon style figures, ?Grande Ceinture, Impression D?Art? & ?Garanti Boussac, Romanex, Grand Teint Lavage, pattern repeat 23", 51.5" x 462.5", or 12.84 yards, 11.75 meters, (few scattered tiny-0.25" spot stains, light stains 1 end at edges) excellent.



117: THREE BLACK & WHITE RICHARD TURGEON FURNISHING FABRICS,

USD 300 - 500

All hand printed: 1 w/ label "Chanin Bloch, A Custom Handprint by Richard Turgeon c. 1972" in forest green on velveteen, pattern no. L-11 repeat 6.5, 56"x129", (small edge sections missing, 2" stain back); 1 w/ label "Africana, An Exclusive Handprint by Richard Turgeon Designs c. 1972", pattern no. D-11 repeat 19.75", 49"x136", (each side 5" folded & glued, 2" brown marks near folds); 1 selvage printed, label "Giraffe, Exclusive Handprint by Richard Turgeon Designs Inc. c. 1972", 53"x49", (edges raw, stains to 1 corner), (all w/ discoloration) all good. Provenance: Archive of Richard Turgeon, prints are referenced in Sample Book, Richard Turgeon Designs, Volume 1 or 2; (American, b. 1937) held at Cooper-Hewitt, acc. #2010-25-1-1/64 & 2010-25-2-1/103



118: TWO INDONESIAN BATIK INSPIRED RICHARD TURGEON

USD 300 - 500

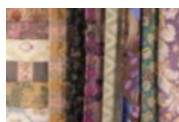
1 w/ label "Macao, an Exclusive Handprint by Richard Turgeon Designs c. 1973", in green, pattern no. 0-15 repeat 13", 49.5" x 276", (rust stains 1 corner, 3.75" x 2.5" section removed 1 corner & 4.5" x 4.5" to other, 15" x 2.5" section removed 1 side); 1 w/ label "Sumatra, an Exclusive Handprint by Richard Turgeon c. 1973" in rust/brown/camel, pattern no. LL-12 repeat 19.5", 49" x 280", (stains at borders, edges & back, tape residue both ends) both good. Provenance: Archive of Richard Turgeon, these prints are referenced in Sample Book, Richard Turgeon Designs, Volume 1 or 2; Designed by Richard Turgeon (American, b. 1937) held at the Cooper-Hewitt, accession number 2010-25-1-1/64 & 2010-25-2-1/103.



119: SIX BLOCK PRINTED BATIKS, INDONESIA, MID 20TH C

USD 300 - 500

1 w/ ochre ground & pink, purple, teal & yellow flowers & shell, Wd 41", L 7' 2"; 1 brown w/ black & cream background & blue, pink, yellow & green florals, Wd 41", L 7' 9"; 1 ochre & red w/ black, purple & cream designs, Wd 42", L 7' 1"; 1 ochre w/ pink, purple & teal flowers & purple birds, label "Tjinta Sedjati L.K.T.", Wd 42", L 7' 11"; 1 ochre & purple w/ pink & teal details, Wd 40", L 7' 6"; 1 ochre w/ pink, purple & teal flowers & geometric ground, label "Tjinta Sedjati L.K.T.", Wd 41", L 7' 9", (all w/ minor discoloration, minor pulling or fraying at edges) all very good- excellent.



120: INTERIOR & FURNISHING REVIVAL STYLE FABRICS, MID 19TH

USD 300 - 500

Length range 6.25"-52.5", Wd range 8.5"-51": 1 brocaded guilloche w/ floral spray motif in 18th C revival, 1850-1875, Wd 8.5", L 9"; 2 lance brocade revival, 1890s; 1 in oriental motif w/ adorsed medieval griffins; 2 small pieces of warp brocade; 1 striped damask; 2 1930s 1 floral & one w/ avian motif; 1 17th C revival; 1 European revival panel w/ mixed floral & fauna motif, China, Wd 51", L 52.5", (all w/ minor discoloration/spot stains, raw edges, small pulls & pinholes) all very good- excellent.

December Vintage - Decades of Decadence



121: DRAPERY & FURNISHING REVIVAL STYLE FABRICS, AMERICA &

USD 300 - 500

Most in historic revival motifs & imitations of Renaissance or 17th C furnishing fabrics: Wd range up to 7", L range up to 55: 1 damask-repro, 1920s; 1 wine & black damask w/ vase motif, label "J. Kennard & Sons Carpet Co. St. Louis"; 1 green damask w/ floral & bird design, label "Adam Meldrum & Anderson Co. Buffalo NY"; 1 green damask w/ attached red, yellow & blue colorway samples, label "Tessitura Carugo S.A.", (swatches removed from corners); 1 blue & orange damask w/ green stripes, (swatch taken from corner), (some discoloration/spot stains, pulls & all w/ raw edges) good- excellent.



122: NATIVE AMERICAN CIGARETTE SILKS PANEL, AMERICA, EARLY

USD 300 - 500

Pieced cigarette silk patches printed w/ important Native American figures including Chief Joseph, Black Hawk & Keokuk arranged as frame around center piece w/ silk feather stitch embroidery, 10.5" x 11.5", (light discoloration, tiny spot stains & pulls, small stains to backing of right edge) very good.



123: PATRIOTIC FLAG PANEL, PHILIPPINES, c. 1900

USD 300 - 500

Produced in the Philippines for the American market, silk floss embroidered on black silk satin depicting the American Eagle, the American Union flag w/ 45 stars (1896-1908) & individual state flags including Rhode Island, New Hampshire & Maine, 32" x 40.5", (moldy, shattering at both ends & fold lines, ends raw & fraying, fading to embroidery, glue/tape residue along back edge) fair.



124: TWO GODEYS LADY'S BOOKS, PHILADELPHIA, 1842 &

USD 300 - 500

1 complete 1842 "Godey's Lady's Book" w/ "O.CH Lincoln" written inside cover, L 10.375", Ht 6.625", Wd 2", (spine detaching, repaired w/ tape, pencil marks); 1 nearly complete 1879 "Godey's Lady's Book", L 9.75", Ht 6.5", Wd 2", (May fashion plate removed, tape inside cover); (both w/ cover wear esp to spine & corners, yellowing/foxing/creasing to pages) as is condition.



125: TWO GODEYS LADY'S BOOKS, PHILADELPHIA, 1850 &

USD 300 - 500

1 complete 1863 "Godey's Lady's Book", L 9.625", Ht 6.5". Wd 2.5", (spine detaching & repaired w/ tape, scuffs/scratches, tears & creases to transparent pages); 1 nearly complete 1850 January-June "Godey's Lady's Book", L 10", Ht 6.75", Wd 2.375", (July & 1 August fashion plates removed, cover very worn/stained/scratched & repaired w/ tape, lettering worn away, 0.25" hole right corner), (both w/ yellowing/foxing/creasing/chipping to pages) as is condition.



126: L'ORNEMENT DES TISSUS BY AUGUSTE

USD 400 - 800

1 French copy of "L'Ornement des Tissus" by Dupont & Auber ville w/ lithographic plates w/ gold leaf including regional styles from France, Spain, Italy & the Orient, 12" x 15.75" x 2.5", (cover faded w/ spot stains, some pages discolored & w/ pencil markings, foxing) very good.



127: THREE BENNETT KORN SUITS, AMERICA, 1950s

USD 300 - 500

All w/ label "label "Styled for Bennett H. Korn?, lawyer for the Los Vegas Rat Pack: 1 midnight navy wool suit lined in printed paisley, CH 41", L 28.5", SH-SH 19", trouser W 34.5", L 39.5", inseam 28.5", (SH & neck lining fading, tiny spot stains, hanger imprints); 1 wool blend grey & black suit, lined in synthetic twill, CH 41", L 30", SH-SH 19", trouser W 35.5", L 38", inseam 28", (1 wrist cuff button cracked, stains to trouser cuffs); 1 black wool blend smoking suit w/ satin lapel, bound pocket flaps, trouser stripe & covered buttons, grey, cream & blue paisley patterned silk lining, CH 42", L 30", SH-SH 19", trouser W 34.5", L 38", inseam 28.5", (tiny pulls, tiny-0.25" marks, fraying CB W, elastic worn) all good- very good.

December Vintage - Decades of Decadence



128: BENNETT KORN SUIT SEPARATES, AMERICA, EARLY 1960s

USD 300 - 500

All w/ label "label "Styled for Bennett H. Korn?, lawyer for the Los Vegas Rat Pack: 1 wool black & grey pinstripe suit, silk satin lining, label "Bennett H. Korn", CH 43", L 31", SH-SH 19", trouser W 36", L 39", inseam 28.5", (fraying CB W band); 1 black wool tailcoat & trousers w/ silk satin lining, double galloon stripe at SS, label "Norton & Sons" & "Bennett H. Korn Esq.", CH 44", L 17"-38", SH-SH 19", trouser W 34", L 41", inseam 29.5", (light marks, hanger imprints); 1 blue wool blend jacket w/ printed twill silk lining & grey wool trousers, label "Bennett H. Korn", CH 42", L 31", SH-SH 19", trouser W 35", L 39", inseam 28.5", (buttons tarnished, tiny pulls, 0.75" stain left thigh) all very good- excellent.



129: BOYS LITTLE LEAGUE UNIFORM, NEW YORK, 1950s

USD 300 - 500

Cotton flannel boy's little league uniform w/ appliqué wool felt "Giants" logo & chainstitch embroidery, label "Empire, The Great Emblem of Satisfaction", shirt CH 38", L 22", trouser W 28.5", L 24", inseam 14", (light wear, tiny snacks & 0.25" spot stains, label fraying) very good.



130: NEW JERSEY POLICE PARADE JACKET, AMERICA, 1880-1900

USD 300 - 500

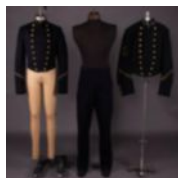
New Jersey police or police marching band coat of blue wool broadcloth, collar w/ metallic bullion embroidered "RDP" monogram, cotton & wool bombazine lining, button w/ New Jersey seal, label "For B. Bathles, 2236, WM.H.Horstman Co. Philadelphia", CH 40", L 36.5"-39.5", SH-SH 19", (4 missing buttons, 1 large & 1 small button detached & included, buttons oxidizing, light wear collar & armcyes, 1.25" light stains seat & CB W) very good; t/w man's sailor shirt, label "Mendels Make", CH 42", L 22.5"-24".



131: HIGHLAND LIGHT INFANTRY DOUBLET, ENGLAND, WWI

USD 300 - 500

Red wool broadcloth Highland Light Infantry w/ cream wool broadcloth collar & cuffs, lined in natural wool herringbone, buttons w/ Order of the Garter crest & stamped at back "T.H. Crombie, Glasgow", CH 37", L 17.5"-24", SH-SH 17", (metal tarnish, collar lining shattered & leather tab worn, light wear/spot stains) excellent; t/w boys wool twill suit lined in half silk, CH 30", L 19.5", SH-SH 14", trouser W 25", L 19.5", inseam 11".



132: MIDSHIPMANS NAVAL UNIFORMS, AMERICA, 1904-1908

USD 300 - 500

Both label "Jacob Reed"s, Philadelphia" & "J.B. Hunsucker?": 1 3rd year Midshipman's uniform, wool broadcloth w/ patent leather interior W lining, cotton sateen lining, 1904-1908, CH 37", W 30.5", L 20", SH-SH 17.5", trouser W 36", L 44", inseam 32", (scratch at CH, leather facings worn w/ 4.5" seam opening, armcye lining openings, tiny holes, 1 suspender button replaced, stirrups very worn); 1 midnight navy petty officer's jacket of wool broadcloth w/ patent leather interior W lining, cotton sateen lining, eagle, anchor & star embroidered w/ silver gild, sequins & bullion, 1904-1908, CH 36", W 31", L 19.5", (small stains, collar worn, scratches) all very good-excellent. The Costume Collection for the Colonial Dames of America.



133: MANS CONTINENTAL BALL COSTUME, CINCINNATI, 1875

USD 400 - 600

1 black silk satin frock coat w/ tambour embroidered net cuffs & metallic bobbin lace trim & buttons at CB, label "Fred Pille, Cincinnati"; 1 blue & ivory Colonial Revival patterned silk waistcoat c. 1860, buckle stamped "Patent 1855", CH 38", SH-SH 18", L 39"; 1 pair black silk satin drop front breeches, W 30", L 28.5", inseam 17"; 1 pair black patent leather dress shoes w/ marcasite buckles & flat bows to vamps, L 10", Wd 3.5", size 7, (trim worn/tarnish, shattering throughout, buckle added 1 pant cuff, seat shattering partially stabilized, small stains, shoes very worn w/ 1 buckle broken, waistcoat stained) all poor- good. Provenance: Worn by Mr. Tone to Continental Ball. The Costume Collection of the National Society for the Colonial Dames of America.

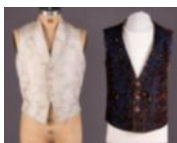
December Vintage - Decades of Decadence



134: COLONIAL FANCY DRESS COSTUME ROBES A LA FRANCAISE,

USD 300 - 500

4-pc fancy dress costume open robe w/ polonaise of synthetic moiré w/ handmade bobbin lace trimmed square neckline w/ applied Alençon needlelace leaves, small bow escalier at CF opening, double box pleated ruffles at cuff w/ double organza engageante, Watteau pleated CB, pleated moiré petticoat, organza fichu & apron, dress B 36.5", W 31.5", L 16"-57", underskirt W 30"-50", L 39"-41", apron W up to 50", L 37.5", fichu, (cuffs discolored, large tears to bodice lining, CF bows frayed, light wear, tiny-0.25" stains, fading SHs, 1 W tie detached skirt, hem stitches visible, lightly discoloration to apron) good. The Costume Collection of the National Society for the Colonial Dames of America



135: TWO SILK WAISTCOATS, AMERICA, 1840-1850s

USD 400 - 600

1 in raised stylized garland & spot patterned cream silk satin ground, extremely fine hand tailoring, padded chest, 1840s, CH 36", W 29", L 19"-21", (missing buttons, spot stains/discoloration, 4" stain CB lining) excellent; 1 brown cut velvet in floral motif on patterned textured blue silk ground w/ cloisonné buttons, 1850s, CH 37", W 35", L 20"-24.5", (lining worn, CF button detached & pinned on, shattering around buttonholes, some wear, back replaced & made wider at CB collar, lining replaced w/ rayon) good. Provenance: Dorothy Quincy Homestead. The Costume Collection of the National Society for the Colonial Dames of America.



136: BONE SILK SATIN WAISTCOAT, AMERICA, 1810-1820s

USD 400 - 600

Bone satin double breasted waistcoat w/ 2 rows of self-covered buttons, high vertical collar & turn back lapels w/ self fabric facings, horizontal banded pocket openings w/ functional lined pockets to lower edge, self-covered buttons, linen backing & front lining, paired back ties of cotton tape, CH 42", W 42", L 24.5", (light discoloration, few tiny holes, pulls & spot stains, light underarm stains, 0.5" stain left B, stained lining, 0.25" worn hole left arm scye) excellent. Provenance: Joseph Holmes the Shipbuilder, (1772-1862) Dorothy Quincy Homestead. The Costume Collection of the National Society for the Colonial Dames of America.



137: GENTS SHORT WAISTCOAT, QUINCY MASSACHUSETTS, c. 1809

USD 400 - 600

Short silk waistcoat of warp brocade in complex floral & stripe w/ paired satin stripes separating a band of tulips & meandering blossom & leaf motif between broad bands of pomegranates contained within borders of pink heavy ribbed silk, 2 horizontal applied bands edging functional pockets, high vertical collar, self-covered bone buttons, lined & backed in linen, probably homespun, CH 36", W 34", L 16.5", (significant stains/discoloration, starting to shatter around hem & back collar, worn, bottom CB ties removed, 1 button chipped) fair. Provenance: Worn by Jeremiah Wetherbee for his wedding on October 14, 1809. Dorothy Quincy Homestead. The Costume Collection of the National Society for the Colonial Dames of America.



138: WHITE SILK POINT DE CHAINETTE EMBROIDERED WAISTCOAT,

USD 500 - 800

Point de chainette embroidered in rosebud motif on white silk waistcoat, pre-embroidered, glazed wool calamanco lining edged with linen, CH 37", W 37", L 22.5", (stains/discoloration, red thread embroidery loss, tiny holes, tiny-0.5" holes lining) very good- excellent. Provenance: Thomas Edes Jr. (August 15, 1762 - April 5, 1818. In this vest he married on the November 26, 1788 Mary Ball Galt. The Costume Collection of the National Society for the Colonial Dames of America.



139: EMBROIDERED SATIN WAISTCOAT, ANDOVER MASSACHUSETTS,

USD 500 - 800

Gold silk satin long waistcoat w/ cream silk chainstitch embroidered undulating border bands w/ fine silver sequined accents, diagonal decorative pocket flaps, self-covered & embroidered buttons in silk chainstitch in stylized rosette motif, glazed wool lining, CH 36", W 34", L 25"-29", (sequin loss, few tiny pulls, light wear, backing/ lining discolored, provenance label removed from lining) excellent. Provenance: Waistcoat originally owned by Samuel J. Abbott of Andover (1787 - 1852) Son of John L & Lucretia Abbott of Andover MA. Dorothy Quincy Homestead. The Costume Collection of the National Society for the Colonial Dames of America.

December Vintage - Decades of Decadence



140: EMBROIDERED WHITE RIBBED SILK WAISTCOAT, c. 1755

USD 500 - 800

Embroidered sleeved waistcoat satin stitch elderberry motif over card w/ exotic multicolor foliate on white ribbed silk ground, embroidery most likely bespoke, English or French, c. 1755, CH 42", W 40", L 27.5", SH-SH 18", (0.75" seam opening left H, underarm stains, light wear/dyscoloration, tiny-0.25" stains to sleeves, conserved shattering at left elbow & underarm) good. Gift of Mrs. Mean. The Costume Collection of the National Society for the Colonial Dames of America.



141: WHITE BROADCLOTH WAISTCOAT & BREECHES, AMERICA,

USD 500 - 800

White wool waistcoat & drop front breeches both w/ gold embroidered basket weave over foil covered boxwood button & extended gold braid button holes, lined in glazed wool twill, 1750-1760, inked ?Timothy Thorton 1726-1787?, CH 38", W 37", breeches W 32", L 20.25"-25", inseam 15.5", (worn, stains/dyscoloration, tiny-1" holes throughout, 3.5" seam opening left coat pocket flap, trim tarnished, tearing CB W V on breeches, leg cuffs torn & missing buttons) poor. Provenance: Dr. James Brown Thornton. The Costume Collection of the National Society for the Colonial Dames of America.



142: BLACK CISELE SILK VELVET SLEEVED WAISTCOAT, 1735-1740

USD 500 - 800

Black cisele silk velvet sleeved waistcoat w/ floral motif at neck opening, CF, hem, pocket flaps & surrounds & cuff, hidden black silk covered button closure on black silk drouget w/stylized berries, 2 black silk velvet ribbon rosettes w/ silver foil covered ring, handwritten tag at CB interior collar reading: "A waistcoat of my grandfather's, S. S. Eaton, Copied by Georgina Eaton, granddaughter of Susan Store Eaton 1899", CH 34", W 30", L 34.5", SH-SH 19.5", (misshapen, wear CF neckline, shattering sleeve, back, SHs & underarms, repairs & insertions at underarms, facings & lining stained/dyscolored, 1 CF button replaced) poor. Provenance: S.S. Eaton. The Costume Collection of the National Society for the Colonial Dames of America.



143: RAPPORT EMBROIDERED SLEEVED WAISTCOAT, 1740-1750s

USD 3,000 - 5,000

Blue ribbed silk sleeved waistcoat w/ gold rapport embroidery, gold braid & metallic sequins, foil covered domed buttons w/ metallic tinsel & stitched cord overlay, Continental, possibly Italian or Spanish, Ch 42", W 34.5", L 38", SH-SH 19", (1.5" repair back right H, lamé worn & tarnished, light fading to body, light wear, silk lining shattered, dyscolored/stained lining, taken in & let out CB) excellent. Provenance: Josiah P. Quincy, Dorothy Quincy Homestead. The Costume Collection of the National Society for the Colonial Dames of America.



144: A FINE SILK & METALLIC BROCADED WAISTCOAT, 1740-1750s

USD 3,000 - 5,000

Mans waistcoat woven tisse en form of brocade multicolored silk w/ floral garland motif twined around metallic lace patterned undulating column on teal patterned silk ground, foil covered domed buttons w/ metallic tinsel & stitched cord overlay, lined in fine glazed tabby wool & linen, 12.75" pattern repeat, France or England, CH 35", W 32", L 29.5"-31", (light dyscoloration & many holes to lining w/ a few being stabilized or repaired, tiny-0.25" holes across back panel, 4.5" stabilized tear at CB above tails, light wear to button holes, wear to metallic threads) very good- excellent. Provenance: Dorothy Quincy Homestead. The Costume Collection of the National Society for the Colonial Dames of America.



145: DECORATED PERSONAL ENVELOPE POUCH, CONTINENTAL, LATE

USD 500 - 800

Sage green silk moire pouch w/ metallic passementerie galloon woven edge, paillettes in laurel wreath motif w/ bee at center, paillette stars in groups of three, lined in cream silk moire, probably for documents or cloth accessories, probably French, 10.25" x 6.25", (metallic trim tarnished, paillette & embroidery loss, stains/dyscoloration, silk shattering along top edge fold, 1.75" stain back top) good.

December Vintage - Decades of Decadence



146: GOLD & SILK EMBROIDERED ORPHREY PANEL, SPAIN, c. 1560

USD 500 - 800

Orphrey panel originally from cope w/ various forms of gold thread embroidery including gaufrure, single thread or nué & other couching techniques on black silk velvet ground (mostly missing), 3 strap work framed medallions depicting Saint John the Evangelist, Saint James & Saint Barbara, re-mounted on red velvet w/ metallic corded edge, 11" x 58", (very worn, lamé tarnished, extensive lamé & velvet ground loss, backing detaching 3.5" x 3", trim detaching, smoky) fair.

Image unavailable

147: ONE STOLE & FOUR MANIPLES, 15TH-18TH C

USD 300 - 500

1 w/ metallic & silk thread laid work embroidery on cream silk ground, Italian, 18th C, Wd 3.75-8.25", L 34", (seam opening, 2 patches); 1 red velvet & lamé brocade, re-made originally 15th C, border & back replaced, Wd 2.75-4.5", L 42.75", (1" trim detach); 1 silk floss flame stitch embroidered w/ copper gilt bobbin lace, probably re-made of furnishing textile, backed w/ waxed linen, Italian, 17th C, Wd 4-8.5", L 36", (2" trim detach); 1 red watered wool moreen stole w/ fleur-de-lis & medallion appliqué, fustian backing, probably French, 17th C, Wd 2.75-6.75", L 79.5"; 1 silver edged silk appliqué, sequins & metallic braid on red silk velvet, late 16th-17th C, Wd 1.75-5.25", L 28.75", (all w/ worn lamé or wear/discoloration & stains) all fair- good.



148: FOUR METALLIC & SILK PATENS, EARLY 17TH- 18TH C

USD 300 - 500

1 cloth of silver w/ scarlet silk brocaded grid motif in stylized medallion, galloon w/ silver & silver gilt, 1630-1640, 10.5" x 10.5", (central cross later addition sm holes); 1 w/ silk embroidered carnations & stylized florals, 4 types of silver gilt thread in lozenge motif border, France, 18th C, 9.25" x 9.25", (backing replaced); 1 coral patterned silk w/ woven metallic warp bands & weft brocade, flat metallic galloon, linen backing w/ bobbin lace edge mid 17th C, 6" x 5.5"; 1 w/ raised silver gilt embroidery & bullion w/ silk embroidered roses & fantasy florals, French, c. 1770, 12" x 12.5", (backing shattering & repaired at edges) (all w/ wear/discoloration/stains &/or lamé tarnish) all good- very good.



149: SILK & METALLIC EMBROIDERED CHASUBLE PANEL, LATE 17th C

USD 500 - 800

Chasuble back panel embroidered w/ twisted silk in long satin stitch, couched metallic thread details & shadings on gold patterned silk damask ground, probably Sicilian, Wd 12.5"-26.5", L 33", (very worn, embroidery & lamé loss, edges largely unfinished, tiny-2" silk shattering holes center & SHs, large sections of ground re-embroidered for stabilization, discoloration) fair.



150: SILK FLOSS & METALLIC EMBROIDERED CHASUBLE PANEL,

USD 500 - 800

Chasuble panel embroidered w/ laid silk floss in ombre shades of coral, blue & green in floral, cornucopia & spray motifs symmetrically arranged w/ center band & mirror image sides, embroidered metallic thread trim, highlights & arabesque motifs, on cream silk ground, Wd 16.5"-23", L 28.5", (shattering spots some w/ small repair, very light thread loss & wear, smalls stains, broad discoloration, back lining starting to detach bottom edge, 2.25" x 1.5" patch center panel) fair.

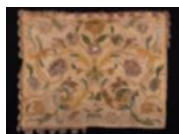


151: METALLIC BRODADED CHASUBLE, FRANCE, c. 1750

USD 500 - 800

Metallic ornament d'église brocade w/ polychrome florals on white weft patterned serpentine bands on cream ribbed silk ground, gold metallic galloon edging & section definitions, red silk lining, Wd 15"-27", L 41", (ground shattering esp. at SHs, lamé loss, 2.75" seam opening right SH, light wear/discoloration) good.

December Vintage - Decades of Decadence



152: EMBROIDERED & APPLIQUED FURNISHING PANEL, ITALY, c.

USD 500 - 800

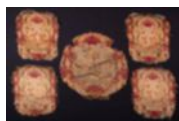
Furnishing panel of course woven hemp overlaid w/ couched silk thread ground, petit pointe & fine canvas embroidery w/ silk floss appliqué w/ raised work elements, looped fringe w/ fine shaped silk tassels, possibly Sicily, 38" x 30" w/ 1.5" fringe, (very worn, fringe loss, stains/discoloration) fair.



153: SILVER EMBROIDERED SILK VELVET PANEL, LATE 18TH C

USD 400 - 600

Red silk velvet w/ silver metallic embroidery in lily motif over layered paper, oversized domed metallic sequins, waxed linen backing, possibly part of funeral pall or horse caparison, 18th C, 40" x 44.5", (backing very fragile & detaching, very worn, edging detaching, lamé tarnish, stains/discoloration/fading, shattering edges & CF at lower panel) poor.



154: COLONIAL REVIVAL CANVAS EMBROIDERY FURNISHING

USD 300 - 500

Needlepoint furnishings, set of 4 backs & 1 seat: 1 seat cover, 25" x 24.25", (1" repair center, 2"x1" corner removed); 1 seat w/ blue swirls at bottom, 15.5" x 18"; 1 seat w/ vibrant background & contrast in woman's headpiece, 16" x 18"; 1 seat w/ vibrant background & less contrast in headpiece, 15" x 18", (partial repairs to corners); 1 seat w/ most faded people, 15.5" x 18.5", 1 seat w/ vibrant background & less contrast in headpiece, 15" x 18", (partial repairs to corners); 1 seat w/ most faded people, 15.5" x 18.5", (all w/ raw/fraying edges, discoloration/wear/spot stains) all fair-good.



155: CANVAS WORK EMBROIDERED SETTEE BACK & SEAT, ENGLISH,

USD 300 - 500

Canvas work embroidery in silk & wool on wool ground in floral sprays w/ stylized ribbon bows set into twining floral wreath & wrapped band border motif w/ twining blue cinquefoil florals, settee back & seat, back 66" x 26.5", (light embroidery loss), seat 80.5" x 32", (significant embroidery loss, 4" x 3" irregular "h" shape cut from top center edge), (both w/ cut & raw edges, light fading/discoloration) back excellent, seat very good.



156: EMBROIDERED & QUILTED COVERLET, PORTUGAL, 18TH C

USD 400 - 600

Quilted cotton coverlet w/ silk & linen embroidery in stylized avian & floral motifs, corner tassels & woven cotton looped fringe, 60" x 90", (smelly, wear to embroidery & embroidery loss, messy fringe, light wear, tiny-1" spot stains, bleached) fair.



157: ONE QUILTED COTTON BEDCOVER & FRAGMENTS, FRANCE &

USD 400 - 600

1 white corded & quilted bedcover w/ center medallion depicting basket of flowers, France, probably Marseille w/ border motifs related to North African corded work, possibly infant presentation bedcover, late 18th C, 50" x 50", (wear, tiny-0.5" holes to topper) excellent, Provenance Elinor Merrill; 2 matching cotton stuffed & quilted bedcover fragments, American, c. 1800: one 23.5" x 38", (unevenly cut & edges raw, wear, small holes to topper), one 22" x 39", (edges raw, small holes & wear to topper) both very good.

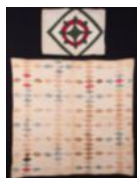


158: CANDLEWICK & BOBBIN LACE COVERLET, RHODE ISLAND, 1821

USD 300 - 500

Candlewick woven coverlet in 3 widths w/ bobbin lace insertion between each 22" width, woven w/ domestic & exotic animal motifs & ?ANODE 1821, IN R.I.?, 74" x 96", (wear to fringe, light discoloration, replaced sections of bobbin lace) very good.

December Vintage - Decades of Decadence



159: ONE PILLOW SHAM & ONE QUILT, 1840-1860s

USD 300 - 500

1 pieced resist dyed & printed cotton pillow sham, 1850-1860s, 16.75" x 23.5", (faded, age spotting & bands of discoloration, 0.25" hole in outer green diamond); 1 baby or lap quilt in variety of block printed & resist dyed dress cottons, 1840s, 45.5" x 46", (age spotting & discoloration, wear) both fair. Ohio State University Historic Costume & Textiles Collection.



160: QUILT RE-CONSTRUCTED FROM 1848 FRIENDSHIP QUILT

USD 300 - 500

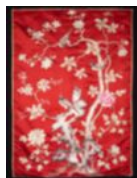
Friendship quilt squares dated 1848, Phelps NY, 4 from w/ Betsy, Francis & Abigail Washburn, 72" x 79.5", (scattered pulls & seam openings in pieced topper, discoloration, tiny-0.75" spot stains) good.



161: CHINESE EMBROIDERED CRANE PANEL, MID 19TH C

USD 300 - 500

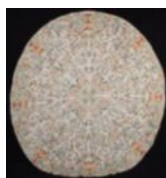
Embroidered apricot silk satin ground w/ stylized crane central medallion & scrolling leaf & floral border w/ auspicious bats in silk floss & paired metallic thread embroidery, Chinese for Japanese market, 27" x 27", (shattering to edges & fold lines, minor embroidery wear) fair.



162: FINE EMBROIDERED SILK PANEL, CHINA, c. 1900

USD 400 - 600

White & grey silk embroidery on scarlet silk satin w/ birds perched on philosopher's stone & tree peony motif, Chinese for Japanese market, c. 1900, 47.5" x 66.5", (smelly, light embroidery wear/fading/discoloration, tiny-1" spot stains, backing replaced) excellent.



163: ELABORATELY EMBROIDERED TABLE COVERING, PORTUGUESE,

USD 300 - 500

Silk embroidered table covering w/ fruit laden challis, scrolling leaf, bird, deer & hunting dog motif, 86" x 82.5", (smelly, light discoloration, wear) excellent.



164: BOBBIN LACE & SILK MOIRE TABLE COVERING, LATE 19TH C

USD 300 - 500

Table covering of silk moire & bast fiber bobbin lace in exuberant floral motifs incorporating stiffened & wrapped cords, 89.5" x 95.75", (shattering esp. at fold lines, heavy staining, broken brides, stabilized shattering at center panels) poor.



165: BURANO LACE TABLE COVERING, EARLY 20TH C

USD 400 - 600

Handmade Burano needlelace table covering w/ florals & dancing ladies, 65" x 82", (few broken brides, two 0.25" holes to edge) excellent.

December Vintage - Decades of Decadence



166: THREE NEEDLE RUN BONNET VEILS, 1820-1840s

USD 300 - 500

1 fine needle run embroidered veil w/ scalloped edge & meandering vine motif to lower edge interspersed w/ alternating small & large sprig motifs, 1820, 46" x 35", (light wear, tiny-0.5" holes, small pulls) very good; 1 needle run embroidered rectangular veil w/ spiraling fruit & foliate sprig motifs, shallow scalloped edge, 1830s, 43.5" x 28", (tiny-0.75" holes in net, light wear) very good; 1 needle run embroidery veil w/ meandering floral vine to all 4 sides, 1840s, 40" x 40", (light wear, 3" triangular repair, small holes & repairs, light stains) good.



167: FIVE BLACK CHANTILLY LACE LAPPETS, 1850-1860s

USD 300 - 500

1 headpiece w/ shaped lappets, Wd 1.5"-8", L 47.5", (faded, fraying edges, few holes); 1 fine net in 18th C revival style w/ foliate sprig & openwork, Wd 3.75", L 53.5", (very light wear); 1 w/ large architectural foliate & Greek vegetal motifs, Wd 4", L 56.5", (light wear/fraying edges, tiny-0.5" holes); 1 w/ classic border & stylized grape cluster motifs, probably 1850s, Wd 3.75", L 56.5", (light wear/fraying edges, few small holes); 1 Chantilly lace in foliate motif w/ openwork sections, Wd 4"-4.75", L 59", (edge wear, tiny holes & pulls) all good- excellent.



168: FIVE BLACK CHANTILLY LACE VEILS OR SHAWLS, 1850-1860s

USD 300 - 500

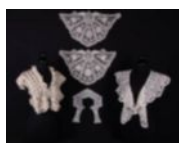
1 triangular head veil w/ wide edging & spot motif ground, Wd 27", L 9.25"; 1 narrow semi circle hat veil w/ drawstring, Wd 43", L 12"; 1 demilune w/ floral border & spot motif ground, Wd 34.5", L 16", (1.5" hole 1 corner, no drawstring); 1 bonnet veil w/ squared off top edge, floral & picot vine edge, L 12.5"-19.5", L 31.5", (no drawstring); 1 Chantilly lace demilune shawl w/ scalloped lace edging, double row at neck w/ inserted ribbon drawstring, fine spot motif net, 1860s, Wd 42.5", L 20.5", (many tiny-0.25" holes), (all w/ small holes & lightly worn/fraying edges) all good- very good.



169: CHANTILLY LACE SHAWL, 1850s

USD 300 - 500

Black square lace shawl w/ symmetrical design in radiating floral festoons & typical shaped edge in leaf & lozenge motif, 76" x 76", (small-4" areas of edging detached & frayed, pulls, tiny holes) good.



170: BOBBIN LACE & NEEDLEWORK COLLARS & INSERTIONS, LATE

USD 300 - 500

2 matching bobbin, needle lace & tape lace appliquéd on net scallop shell shaped insertions, late 19th C, both tip-tip 21"-22.5", Wd 13.5", (0.25"-2" seam openings, discoloration, 1 w/ edging removed from corners); 1 large white bobbin lace, inner circ. 42", Wd 6.75", (few pulls, light wear); 1 ecru silk pongee w/ drawn thread work forming grid of lozenges creating islands over embroidered w/ Tenerife interspersed w/ spiderwebs, rondel & insect motifs, featherstitch embroidery & bobbin lace edging, tip-tip 39.5", Wd 7.5"-12.5", (light wear); 1 narrow white bobbin lace collar w/ short lappets, neck circ. 14.5", Wd 2-3.5", (laundered, light wear) all good- excellent.



171: FOUR CROCHET COLLARS & ONE DICKIE, EARLY 20TH C

USD 300 - 500

3 silk crochet: 1 dickie w/ clover motif, inner circ. 13.5", Wd 14.25", (green stains to ends); 1 snowflake shaped collar w/ open & closed buttons, petaled wheels w/ needlework centers, circ. 17", Wd 8", (1 fringe loose CB, small holes, 1" tear CB, edging loose); 1 square yoke collar w/ front extensions, stylized wheels & floral motifs, inner circ. 47.5", Wd 6.5", (4.5" of right edge removed, 1" hole right edge, 1.5" removed left corner); 2 cream cotton Irish crochet collars w/ lappets: 1 w/ tabs & stylized pinwheel & florals, inner circ. 41.5", Wd 1.25"-6", (0.5" & 1.5" holes left side); 1 w/ grape vine & leaf motif, 3-dimensional flowers & inset pinwheels, inner circ. 15", Wd 3.5"-8", (light wear, few broken brides) all good- excellent.

December Vintage - Decades of Decadence



172: FOUR BRUSSELS MIXED LACE COLLARS, LATE 19TH C

USD 400 - 600

All Brussels mixed lace w/ inset needlelace classic rose motif: 1 white Brussels lace w/ floral & leaf design, inner circ. 34.5", Wd 3.5", (small seam openings net inserts, 1" tear, 0.75" repair); 1 white Brussels mixed lace, inner circ. 39.5", Wd 5.5", (small holes & 1.25" hole right back); 1 white mixed Brussels lace, inner circ. 39", Wd 4.5", (worn); 1 tea dyed Brussels lace w/ floral designs, inner circ. 37.25", Wd 5", (1" seam opening, discoloration, worn, 1" tear right back), (most w/ small areas of broken brides) good-very good.



173: GENEROUS LOT BRUSSELS MIXED LACE DRESS ELEMENTS, LATE

USD 400 - 600

1 fine pair of ecru lace cuffs, Wd 7", circ. 13"-17", (dark stitch remnants on top edge, light wear/discoloration, tiny pulls); 1 set of Alencon cuffs & collar, Wd 1", collar L 13", cuff L 6.25"; 1 large bobbin lace collar & stomacher insertion, Wd 2.25"-7.25", L 26.25", (discoloration neck, sm. holes, 1.5" repair); 1 set ecru bobbin lace cuffs w/cut net top edge, Wd 6", circ. 24"-28.5", (edge cut & raw, few broken brides); 1 mixed Brussels lace & net dickie, Wd 8.75", L 12", (few small repairs & broken brides), (all w/ small spot stains & light wear) all good-excellent.



174: TWO LACE STOLEES, LATE 19TH C

USD 300 - 500

1 net shawl w/ bobbin lace appliqué & cutwork in garland & sprig motif w/ butterflies & bows, scalloped edge, Wd 17.5", L 82", (tiny-0.25" holes, light wear, 0.25" repair near center) good; 1 tambour w/ chemical lace insertions in festoon & flowering basket motif, Wd 19.5", L 95.5", (wear at edges, tiny pulls) excellent; t/w 1 stole w/ fine Carrickmacross, Wd 16", L 100.5"



175: TWO CHAINSTITCH EMBROIDERED WEDDING VEILS, EARLY 20TH C

USD 300 - 500

1 rectangular chainstitch embroidered w/ sprig motif ground, 55" x 94", (light wear, tiny-0.25" holes, 1 sm spot stain, few 0.25-0.75" repairs) good; 1 chainstitch w/ embroidered fillings w/ embroidered dotted swiss ground, 54" x 92", (minor wear, few tiny broken brides) excellent.



176: TWO TAPE LACE APPLIQUÉ WEDDING VEILS, BELGIUM,

USD 400 - 600

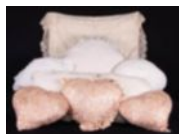
1 chainstitch w/ tape lace appliqué in continuous vine & flower motif, 65" x 111", (few broken brides) excellent; 1 tape lace appliqué in short vine & sprig motif, 1950s, w/ tag "Made in Belgium", 72" x 108", pristine.



177: GENEROUS LOT OF BONNETS, CAPS & BOUDOIR CAPS, LATE

USD 300 - 500

2 Bonnets, Ht range 6.5"-16.5", depth range 6.25"-13": 1 large white cotton w/ stiffened brim & Heilmann embroidered flounce, gathered puff crown, (tiny spot stains); 1 traditional house bonnet of fine cotton pique; 6 boudoir caps, circ. range 21"-23": 1 net w/ soutache & French knot embroidery, (missing soutache); 1 ecru lace w/ bias silk tubes stuffed & knotted dangling from crown, c. 1910; 1 Martha Washington cotton batiste w/ lace insertions & Madeira embroidery, pink ribbon, label "French Made in Paris for Altman & Co. NYC", (ribbon shattering); 1 embroidered net w/ lappets; 2 gathered & ruffled rows of lace &/or tulle; 1 canton embroidered w/ filet trim & 1 w/ heavy whitework, Ht 6.5", (most w/ discoloration, small pulls & wear) all good- excellent.



178: NINE BOUDOIR OR NURSERY PILLOWS, 1900-1930

USD 300 - 500

3 pc set heart shaped w/ bias satin tape lace in floral motif w/ needle work brides over pink silk satin, 1 w/ ruffle & 2 w/out 14"x12.5"x4", 17.5"x3.5"x15.5" & 15"x13.5"x3", (broken brides, 0.25" stain); 1 white oval w/ fine Irish crochet, 18"x11"x3.5", (2 repairs); 1 oversized cream Maltese lace over ivory silk satin, 33"x33"x1.5", (light discoloration); 1 handkerchief linen semi-circular "Bebe" embroidered, 22"x3.5"x12.5", (pinholes); 1 white rectangular w/ lace & silk embroidery on cotton lawn w/ ruffle, 16"x12.5"x4"; 1 white machine embroidered net heart w/ cupid, peacock & roses, 17.5"x4.5"x14.25", (spot stain); 1 white round w/ drawn threadwork & embroidery, bobbin lace, 18"x18"x6.5", (all w/ light wear/pulls or broken brides) all good-excellent.

December Vintage - Decades of Decadence



179: FOUR BOBBIN LACE OR IRISH CROCHET PILLOWS, EARLY 20TH C

USD 300 - 500

1 large Irish crocheted w/ pinwheel & floral motifs w/ 3-dimensional bullion stitched stamen, 2.5" x 23" x 9.5", (light tiny-0.5" spot stains, light wear); 1 very large bobbin lace w/ center medallion & monogram ?FKH? of needlelace, 49" x 19" x 7.5", (tiny pulls/spot stains/broken brides, light wear); 1 extremely fine bobbin tape lace, 14.5" x 2.75" x 10.5", (few small pulls); 1 bobbin tape lace, 14.75" x 3.75" x 10.25", (few scattered marks & broken brides) all very good- excellent.



180: SET OF FOUR SILK & TAPE LACE CURTAINS, 1910s

USD 300 - 400

Four matching silk curtain w/ silk tape lace, needlelace fillings & buttons, brass curtain rings: 1 Wd 35", L 31", (large tide marks center, 2.25" & 1.25" holes in lace bottom right corner), 1 Wd 35.5", L 31", (light 2" stain center & 1.25" top left side), 1 Wd 36", L 32.5", 1 Wd 37", L 31", (7" light stain bottom left corner), (all w/ oxidizing metal rings, small stains/discoloration/pulls & small holes) all fair- good.



181: FOUR TAMBOUR EMBROIDERED CURTAINS OR BED COVERINGS, c.

USD 400 - 600

2 matching satin stitch embroidered & tambour net curtains, both w/ 8" fringe: 1 curtain 31" x 76" & 1 curtain, 32" x 79", (both w/ messy fringe, light wear, unfinished ends raw) good; 1 tambour embroidered bedspread w/ needle runembroidered fillings, pieced work & satin stitch details & highlights, 87" x 101", (light discoloration, pulls) very good-excellent; 1 tambour bedspread w/ satin stitch embroidery, pieced work & course running stitch outlining, 91" x 100", (light wear/discoloration, tiny-0.5" spot stains) very good.



182: SET OF 18TH C REVIVAL EMBROIDERED BED CLOTHES, EARLY

USD 300 - 500

Drawn thread work & Madeira embroidered bed clothes in 18th C revival style depicting courting couple: 1 large sheet w/ couple on moonlit stroll, 71" x 105.5", (light wear, visible embroidery markings, tiny pulls) & 2 matching pillowcases, 20.5" x 34" & 20.5" x 34.5", (light wear, tiny spot stains, some fraying at edges of 1); 1 cutwork linen bedsheet w/ needlework brides in putti motif, 108.5" x 97", (light inkings on 2 corners, tiny-0.25" spot stains) all very good- excellent.



183: TWO SETS OF MATCHING BED CLOTHES, EARLY-MID 20TH C

USD 300 - 500

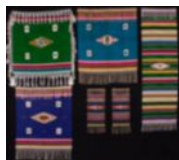
Set of pink linen bed clothes edged in cream bobbin lace: 1 bedsheet, 92" x 180", (light wear, tiny pulls), 1 matching bedsheet w/ no trim, 92.5" x 132.5", (light wear, light 2" stain near center of 1 edge) & 2 pink linen pillowcases w/ cream bobbinlace trim, 32.5" x 32.5", (light wear, tiny pulls) all good- excellent ; 1 set w/ cutwork, drawn thread work & embroidery in trompe-l'oeil bow, undulating vine & floral crest motifs: 1 white openwork bedsheet, 153" x 100", (tiny-0.5" spot stains, 2.5" raw edge lower right corner) good & 1 white openwork pillow topper, 80" x 32.5", (light wear/pulls/fraying) very good.



184: TWO CROCHET FURNISHING ACCENTS, c. 1900

USD 300 - 500

1 crocheted cotton window surround w/ extended knotted ball fringe & 3 dimensional flowers & leaves, 29" x 36", (light general wear); 1 length of crocheted hemp wall or furnishing trim w/ crocheted ball fringe 6"-11" x 175" both excellent.



185: RARE SALTILLO CARD TABLE COVERS & RUNNERS, 1930-1940s

USD 400 - 600

All wool & cotton & w/ knotted warp fringe: 3 card table coverings w/ silk & wool suits in corners: 1 green, 31" x 32" w/ 6.5" fringe, (fringe very worn), 1 blue, 31.25" x 29.75" w/ 6.5" fringe, 1 teal 31.5" x 31" w/ 7" fringe, (all w/ small spotstains/snacks, light wear & messy fringe); 1 large runner, 18.5" x 58.5" w/ 4.25" fringe, (light wear/discoloration/spot stains); 2 small matching runners, 9" x 18.75" w/ 4" fringe, (fringe very worn & some missing, light discoloration) all good.

December Vintage - Decades of Decadence



186: ONE SERAPE & TWO SALTILLO RUNNERS, 1930-1940s

USD 400 - 600

1 serape of ombré wool & cotton, 38? x 81.25" w/ 9" fringe, (fringe discolored, light wear) excellent; 1 primarily peach color striped, 18" x 39.25" w/ 4.25" fringe, (light discoloration to fringe, tiny-0.25" snacks near center 1 end) very good; 1 primarily teal striped, 18.5" x 40.75", (tiny-0.5" snacks & holes, light wear) good.



187: EUROPEAN PAISLEY SHAWL, 1860s

USD 300 - 500

Jacquard woven shawl in style of pieced Kashmir paisley w/ pieced border to 2 ends & silk feather stitch embroidered monogram, 61.5" x 131", (wear to fringe/light wear, tiny pulls, 2 ends not original) very good- excellent.



188: STRIPED EUROPEAN PAISLEY SHAWL, 1860s

USD 300 - 500

Jacquard woven in decorative vertical stripes based on traditional Kashmir motifs w/ scrolling pines & foliate, terminating in warp fringe, probably Nimes, 58.5? x 119.5", (small holes & tears, fringe very worn & partially missing, light wear) good.



189: EUROPEAN PAISLEY SHAWL, 1860s

USD 300 - 500

Jacquard woven wool paisley typical French interpretation of Kashmir shawl w/ stylized classical Greek motifs & elongated pines, terminating in simple warp fringe, 58" x 126.5", (fringe worn) excellent.



190: SILK CANTON SHAWL, LATE 20TH C

USD 200 - 400

Raspberry canton embroidered shawl, 52" x 48" w/ 19" fringe, (pulls to fringe knotting, few tiny pulls embroidery, tiny-0.5" spot stains around edges) very good.



191: REVERSIBLE CHINOISERIE CANTON SHAWL, 1910-1920s

USD 300 - 500

Cream silk canton Chinoiserie shawl w/ figural, avian, floral & architectural landscape motifs, 46.25" x 46.25" w/ 20.5" fringe, (fringe messy, tiny pulls, tiny-small spot stains, 2.5"x 1.5" cluster spot stains at 1 edge & 2.75" x 2" cluster in fringe) very good.



192: REVERSIBLE CREAM CANTON SHAWL, 1920-1930s

USD 300 - 500

Reversible canton shawl w/ large tree peony motif & various ombre florals & leaves, 58.5" x 59.75" w/ 19.5" fringe, (embroidery pulls, tiny-small stains, fringe messy) very good.



193: LARGE LOT OF LINGERIE, 1920-EARLY 1940s

USD 400 - 600

2-pc orange pajama set, B 50", W 48", L 25.5", pant W 36"-42", L 39", inseam 22.5", (small holes groin); 1 pink teddy w/ cream lace, B 36", L 31.5", (flowers worn/stained); 1 peach nightgown w/ lace collar V neck, B 42", W 37", L 58", (6.5" pull seat); 1 orange nightgown w/ V neck, B 48", W 51", L 55", (cord coming undone B, stains B & hem); 1 peach teddy w/ blue flowers, B 38", L 26", (small holes left SH strap & right W); 1 orange nightgown w/ ribbon bow at B, B 39", W 36", L 54", (armscyes fraying, tiny pulls); 1 peach nightgown w/ Irish crochet & mm filet lace, B 44", L 50", (sm-1.25" holes), (some w/ small stains) all good-excellent.

December Vintage - Decades of Decadence



194: FOUR UNDER GARMENTS, 1912-1920s

USD 300 - 500

1 step-in w/ filet yoke & wide SH strap edged w/ ribbon insertions, B 36", W 32", L 37", (tiny spot stains, no closures); 1 cotton lawn camiknickers w/ white work embroidery at neckline & cuffs, bodice w/ lace insertion, c. 1912, B 40", W 31", L 39", (tiny holes, two 0.75" tears left cuff near inseam); 1 long cotton slip w/ tucking & Peruvian inspired lace insertions at B & deep hem, B 41.5", W 27.5", L 53", (modified at CB W, 1.5" tear right CB, small repairs SS & left CF); 1 step-in w/ laceinsertion at CF neckline surround embroidered medallion & yellow ribbon insertion, B 42", W 46", L 34.5", (small repairs near left SS, modified to be slip, missing 10" trim CB hem) good- excellent.



195: FIVE NIGHTGOWNS, 1860s-EARLY 20TH C

USD 300 - 500

1 white cotton w/ crochet trim to front tab opening, neckline & cuffs & red "MO" cross stitch, B 60", L 43", (few light spot stains); 1 heavy white cotton, wide square neckline w/ 3 tabs of Heilmann embroidery, open SH gusset SLVs, 1860s, B 54", W 55", L 40.5", (pulls/light stains); 1 cotton w/ broderie anglaise to yoke & cuff & w/ Heilmann insertions, 1860s, B 52", W 54", L 53", (inking CB neckline, tiny stains/fraying); 1 white cotton, inset yoke & cuff w/ Heilmann embroidery, 4 CF buttons, B 48", W 56", L 53", (0.25" hole right cuff, small stain back left knee, CB seam pulling); 1 fine white cotton w/ neck ties, tucks & mm lace insertions, period reproduction, B 42", W 36", L 55", (1" seam opening 1 armscye, tiny-1" stains) very good- excellent.



196: THREE NIGHTGOWNS OR ROBES, 1855-1910

USD 300 - 500

1 china silk nightgown w/ tape & needle lace yoke & cuff insertions w/ inset machine lace medallion at CF, c. 1910, B 42", L 54", (pulls across B, sleeves & SS's, tiny-0.25" holes) very good; 1 fine linen night robe w/ entirely hand embroidered eyelet & whitework yoke & cuffs in plume motif w/ berry bunches, CF button closure & horizontal rows of tucking, machine chainstitch, 1855-1860, B 48", L 53.5", (tiny-0.5" holes, 0.75" tear CB collar, missing 1 button) good; 1 sleeveless princess line night dress w/ Schifflli embroidery, ?T? monogram at B, c. 1905, B 39", W 32", L 53.5", excellent.



197: FIVE CORSET COVERS, 1908-1920s

USD 300 - 500

1 shaped corset cover w/ inset crocheted yoke & short sleeves, glass button closure, B 36", W 24", L 17.5", (light discoloration); 1 w/ filet crochet yoke in star pattern & lace sleeve trim, B 50", W 52", L 20", (discoloration); 1 cotton mull w/ net sleeves & chevron inset lace yoke & embroidered bands, B 41", W 26"-37", L 14", (lace fraying); 1 cotton blouse w/ tea dyed crochet yoke, B 27", W 18"-25", L 18", (CF bow discolored, light tiny-0.25" spot stains, modified w/ modern cotton section); 1 cotton & silk mull w/ front corselet style insertions, neckline & armscye trimmed w/ ribbon, fine "G.R." B monogram, B 35.5", W 22", L 18", (tiny-0.25" light spot stains, pinholes) all good- excellent.



198: SIX CORSET COVERS & LINGERIE, 1860s & 1905-1920s

USD 300 - 500

1 w/ deep let-out hand tucking at CF, MOP buttons, lace insertion & ruffle, B 47", W 32.5", L 20.5", (sm. stains, unpicked B darts); 1 of woven bands w/ double eyelet row for ribbon insertion laced at CF over MOP button closure, all chainstitch, 1860s, B 43", W 26", L 17.5", (0.75" hole 1 SH, light underarm stains); 1 w/ micro tucked W CF & CB, asymmetrical front neckline w/ white work & lace insertions, left side closure, c. 1905, B 39.5", W 27", L 20"; 1 cream silk w/ lace, drawnwork & silk embroidery?JMB? monogram, B 40", L 21", (hem raw, stains CF & left underarm); 1 pink silk crepe w/ lace trim, B 42", L 14"-16.5", (hem raw, 3 tiny holes); 1 cream silk crepe bandeau w/ imitation filet lace trim, B 45", L 9.5", (0.5" hole hem) all good- pristine.

Image unavailable

199: TWO CRINOLINE CAGES, 1870s

USD 400 - 600

Both steel & cotton: 1 w/ wide cotton criss crossed tape front section & back cage, W 22"-30", L 33", (very worn, stains/discoloration, metal rusted/tarnished, several lg tears & seam openings in basket weave, W band extended w/ machine-sewn strip); 1 w/ flat front originally of elastic tapes, back cage & half lobster, W 20"-29", L 32", (very worn, metal components rusted esp. W buckle, right back page format and 2 & 2 1/2 bands replaced w/ fabric, stains/discoloration)

December Vintage - Decades of Decadence



200: GLAZED LINEN STAYS, 1820-1830s

USD 2,000 - 3,000

Glazed linen w/ paired inset godets at B, decorative back stitched cording at CF & CB, corded reinforcements at sides of B & diagonally across torso, turned bone eyelets attached as extensions, single steel bone at either side of CB to W, interior pocket for metallic kid-covered busk, B 30", W 22", H 30", L 21", (light wear, light underarm stains, 1.75" stain near left SS, light stains B, tiny pulls, busk worn & rusting, leather stained) very good.



201: TAN LINEN STAYS, 1750s

USD 2,500 - 4,000

Linen stays w/ baleen boning, kid leather trim, eyelets reinforced w/ wrapped kid leather band, B 30", W 26", L 10.5"-14.5", (laces N/I, leather binding/facing details & laces at eyelets worn/discolored, 2.25" missing leather binding right of CB top opening, discoloration esp. to hem, tiny-1.25" spot stains, 0.75" tear in linen right SH blade) excellent.



202: TWO SILK VELVET BEADED EVENING CAPES, 1870-1880s

USD 300 - 500

1 black silk velvet w/ jet beading, soutache & cording in stylized floral motifs, stand collar w/ ruched black silk chiffon lining & edging, double faced silk satin ribbon bow at neck, CF hook & eye closures, SH-SH 48", L 28", (bead loss/disease, wearesp at hem & collar, shattering collar lining at closures); 1 midnight navy silk velvet shoulder cape w/ jet beaded passementerie & fringe, black silk chiffon ruffle at neck, lined in black chinasilk, SH-SH 38", L 16.5", (bead loss/disease, ribbons unfinished, lining lightly discolored) both good.



203: WOOL & SILK LADIES CAPES, 1890-1910

USD 300 - 500

1 short brown dolman silk cape w/ self-satin ribbon stripe & stamped metal buttons, SH-SH 17", L 24", (internal W band torn, 4.5" repair left back, small holes, lining discolored); 1 black silk ottoman w/ applied corded passementerie on silk satin bandsto hem & sleeves, braided & interwoven corded frog closures, SH-SH 19", CH 42", L 51", (satin & braid shattering/worn, 0.75" seam opening back below collar); 1 black wool broadcloth cape w/ Corelli embroidered appliqué & stitched cording, SH-SH 18", L 35", (lining shattering CF opening, small holes, 2 CF hooks missing); 1 dark aubergine silk satin cape, SH-SH 18", L 39", (wear/stains at collar & SHs, 3 CF snaps detaching, 1 button detached & included) all good- very good.



204: FIVE SEPARATES, LATE 19TH-EARLY 20TH C

USD 300 - 600

1 black silk taffeta jacket w/ appliquéd chemical lace, bishop sleeves, B 56", L 31.5", (tiny-0.5" stains, tear CB neck, shattering underarms); 1 white linen w/ inserted chemical lace & cotton crocheted ball fringe, B 40", W 32", L 16", (light wear, 1.75" stain left H, light stains SHs & collar); 1 black silk taffeta w/ decorative CF frogs & woven soutache buttons, cream silk satin lining, B 40", L 13.5-24.5", (lining damaged, discoloration); 1 ecru linen long sleeved Regency jacket w/ silk soutache braid, B 43", L 14.5", (discolored neckline, tiny-0.5" stains, pulls hem, missing 1/2 closure); 1 pin-tucked & top stitched black taffeta bodice, flared cuff, cream silk satin lining, SH-SH 18", L 15.5-19.5", (tiny holes lining) all good- excellent.



205: HAND EMBROIDERED SILK TAFFETA EVENING CAPE, EARLY 20TH

USD 400 - 600

Heavy black silk taffeta cape w/ magenta silk bespoke hand embroidery in bird & blossom motif to yoke, CB neck & extending along CF opening to above hem, cape gathered into standing ruffle at SH w/ un-gathered & embroidered section at CB, black marabou feathered convertible collar & CF placket over hook & eye closure, magenta china silk lining quilted in diamond motif, SH-SH 17", L 20", (feathers shedding, light wear to cords, 1.75" paint stain to lining) excellent.

December Vintage - Decades of Decadence



206: LINEN MOTORING DUSTER, 1910s

USD 400 - 600

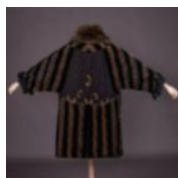
Linen w/ tan leather trim, convertible collar, asymmetrical front closure w/ oversized leather covered buttons, deep leather cuff, narrow SS glove pockets w/ four small leather covered buttons, deep inverted box pleat at CB from neck to hem w/ decorative leather half belt, B 44", L 57", (leather trim & buttons worn & stained, 1.5" & 0.5" holes right lap, worn, stains/soiled) good.



207: WOOL BROADCLOTH TRAVELING COAT, NEW YORK, c. 1918

USD 400 - 600

Wool broadcloth w/ triple box collar, white velveteen lapel extending into CF facings w/ black wool appliqué & contrasting rows of decorative topstitching, tiered extended bell cuff w/ same decorative topstitching, broadcloth appliqué on pressed velveteen either side of CF, deep SS slit w/ faux double toggles, deep tiered hem w/ decorative top stitching, lined in cream silk satin, label "M. Berkowitz Ladies Tailor New York", B 38.5", L 55.5", (lining shattering, 1 missing button left SH closure, CF loop for closure worn) excellent.



208: CISELE VELVET COCOON EVENING COAT, 1920s

USD 300 - 500

Cisele velvet w/ floral ribbon pattern on satin ground, front & back panels of embroidered silk chiffon, chevron pieced dolman sleeve w/ smocked & bias band black silk satin cuffs, fur collar, B 52", (fur soiled & worn, shattering CF & chiffon CB, unpicked embroidery CB, general wear, 1 button removed & included) fair.



209: SILK CHARMEUSE DAY DRESS, c. 1903

USD 300 - 500

2-pc silk charmeuse gown moss green stylized reptilian patterned spot motif undulating on ivory ground, monobosom bodice w/ high stock collar, lace bertha collar in chain stitch on mesh ground, CF tapered ties & cuffs trimmed w/ 2 bands of charmeuse backw/ black ribbon edging detail, full bishop sleeve w/ pleated shaping, CB hook & eye closure, bell shaped skirt w/ applied vertical band masking front construction, shaped flared skirt flounce narrow at CF & deep at CB creating slight train, B 34", W 30.5", L 18.5", skirt W 26", L 40.5-52", (7" of bodice hem raw CF, lace yoke tears & holes & stabilized, stains & discoloration, stain CF torso, loose hooks & eyes, skirt shattering CB W, W band torn and missing for 3" CB, stains to seat) fair.



210: TWO DAY DRESSES, 1900s

USD 400 - 600

2-pc fine black ribbed silk w/ woven satin floral spot motif w/ cut lattice edged in black silk velvet & either backed w/ Chantilly & filet lace or silk velvet ribbon insertions, label "N.S. Gammon NY", B 36", W 29", L 14.5"-19", skirt W 26", L 41", (modified CF, lining replaced, shattering, left cuff & front W lace detaching, W band replaced w/ ties, 8" seam repair seat) fair; 3-pc khaki wool gabardine c/o dinner bodice w/ bishop slv, fitted cuff, high stock collar & yoke of cream silk satin w/ silk organza & chemical lace overlay, day bodice w/ yoke & cuffs of embroidered tulle & pink silk corded scrollwork, 1st bodice B 32", W 25", L 15"-17", 2nd B 38", W 35", L 19.5", skirt W 24", L 39", (broken brides, wear/dyscoloration/stains/sm holes) very good.



211: TWO MONOBOSOM TEA DRESSES, 1900s

USD 400 - 600

1 tea dress w/ 3-dimensional Irish crochet yoke, large insertions of crochet & bobbin & chemical lace throughout, skirt embroidered & w/ burned out graduated medallions, B 45", W 30", L 55", (light discoloration neck & SHs, pulls, few tiny holes, 0.25"-2" holes at underarms, small stains); 1 w/ vertical tucks & rows of geometric lace insertions, also at sleeves & skirt, B 55.5", W 28", L 55", (tiny-0.25" spot stains, 1.5" stain right hem, many tiny-1.5" holes & repairs in W, scattered tiny holes, discoloration, light fraying, loose/ partially detached closures) both good. Ohio State University Historic Costumes & Textiles Collection.

December Vintage - Decades of Decadence



212: TWO COTTON LAWN TEA DRESSES, c. 1908

USD 300 - 500

1 white w/ Schifflli embroidery & typical mm lace geometrical insertions both woven & chemical, SH yoke w/ full sleeves gathered into vertical tucks above banded cuff, gathered W, bell shaped skirt w/ rows of horizontal tucking between lace insertions above hem, B 43", W 26", L 59.5", (broken brides, discoloration/stains, 2.75" hole left cuff, 4.5" tear inside hem, 17" seam opening/tear hem, wear) fair; 1 pale pink w/ woven bobbin lace & yoke of Heilmann embroidery, mm tucks, full sleeve, yoke, W & skirt w/ diagonal chevron lace insertions &/or ruffles, B 52", W 25", L 55.5", (0.25"-1" holes, stains, 1 missing button, lace repaired at back W w/ stabilization) good. The Costume Collection of the National Society for the Colonial Dames of America.



213: THREE EMBROIDERED TEA DRESSES, 1910s

USD 300 - 500

1 tea dress of fine textured cotton w/ Schifflli embroidered flowers & multi leaf stems, faux bolero front, double tiered skirt, B 43", W 23.5", L 48.5", (tiny-0.5" dark spot stains & pulls, light fraying, 0.5" seam opening right SH) very good; 1 over dress w/ lace & embroidered insertions, bishop sleeve c. 1910, B 47", W 25", L 40", (fraying cuff & neckline, tiny-0.25" stains & holes, hem shortened, 2 missing buttons & loose hook & eye) very good; 1 embroidered tea dress w/ lace insertions, 2-tiered ruffled skirt, B 41", W 24.5", L 52", (tiny-0.25" spot stains & pulls, minor fraying, 1.5" tear upper ruffle CB) good. Ohio State University Historic Costume & Textiles Collection.



214: THREE TEA DRESSES, 1905-1914

USD 300 - 500

1 white cotton lawn w/ horizontal, vertical & diagonal pin tucks & woven lace insertions, stock collar, blouson bodice, long slv, B 48.75", W 29", L 57", (0.5" hole in lace left SH, 1" repair right W, tiny-0.25" holes CB collar) good; 1 white cottonmull w/ Schifflli embroidery in Marguerite & vine motif w/ inserted bands of woven imitation bobbin lace, B 38", W 26", L 54.5", (hem embroidery fraying) excellent; 1 linen w/ Heilmann embroidered florals & twining foliate & fine Irish crochetcuffs, collar & diamond shaped insertions at CF, B 42.75", W 25.25", L 55", (broken brides, small holes & repairs, hem modified) good.



215: THREE GIRLS TEA DRESSES, 1910-1920s

USD 300 - 500

All cotton lawn: 1 w/ slight monobosom, lace insertions & 2 Heilmann embroidered bands at neck yoke & 1 at W, B 47", W 31.5", L 39.5", (small holes & stains, few tiny-sm repairs, general wear/discoloration); 1 w/ long panel of inset lace & Schifflli embroidery at CF & horizontal tucks, short 2-tiered gathered bell sleeves, B 32", W 22.5", L 40.5", (missing 2 hooks at CB closure, 2" x 1.75" repair front left W band, small stains, wear); 1 w/ insertions of lace & Schifflli embroidered florals w/ eyelets, bib collar front & back, B 43", W 34", L 29", (small holes & repairs, 0.25" spot stain right sleeve) all good.



216: TWO TEA GOWNS & ONE UNDERDRESS, 1910s

USD 400 - 600

1 tea dress w/ Schifflli embroidered rose & eyelet panels, vertical & horizontal tucking, lace insertions to CF & CB neckline & to skirt, sleeve seams, B 38", W 26", L 48.5", (2 period repairs 1 underarm, 2 missing buttons, smholes, light hem stains) good; 1 tea dress w/ Schifflli embroidery bodice, lace insertion to neckline & as trim cuff, fine tucking, broad tucks above hem, B 38", W 24", L 51", (clusters of tiny- 0.25" stains & holes to CF, underarm & lap, 1 missing button, stained hem, neckline worn) good; 1 princess line underdress for tea gown w/ lace insertions at B & above hem flounce, lace trim to square neckline, cuffs & in graduated tiered ruffle at hem, B 32", W 25", L 49", (tiny-0.25" spot stains skirt) excellent. Ohio State University.



217: HAND EMBROIDERED TEA GOWN, c. 1912

USD 500 - 800

Cream silk lawn princess line tea dress hand embroidered w/ heavy padded cotton to bodice & trained skirt, multiple tucking & lace insertion in Renaissance style sleeve w/ heavy embroidered cuff detail, B 36", W 28", L 59"-67", (lining shredded & partially missing, some discoloration, stained at neckline, 3" hole CB near closure) fair. The Costume Collection of the National Society for the Colonial Dames of America.

December Vintage - Decades of Decadence



218: SILK & EMBROIDERED NET DAY DRESS, c. 1912

USD 300 - 500

Silk ottoman day dress w/ stock collar, silk taffeta cummerbund, bodice of embroidered & tucked net w/ silk ottoman insertion decorated w/ faux lamé button medallions, embroidered & tucked net tiered sleeve, 2 edged in silk ottoman, SS w/ knotted decorative faux lacing terminating in tassel over box & knife pleated inset, B 41", W 32", L 49", (missing underskirt, W sash shattering right side, stains, CF lamé embroidery worn & tarnished, underarm stains) good.



219: EMBROIDERED CREPE GOWN c. 1914

USD 300 - 500

Cream crepe back satin w/ raised silk embroidery in exotic floral frond & calligraphic motifs to B, sleeves, cuffs & at termination of draped side skirt panels w/ corded appliqué & triple silk tassel, spot embroidered & tucked net yoke, pleated SH strap, embroidered & tucked net yoke, pleated SH strap & cummerbund W band, narrow bell-shaped trained skirt B 35", W 28.5", L 59"-74.5", (bodice lining shattering, tassels worn & messy, SH pleating detached front panel & from collar, cord at seat worn, collarline fraying, 2" mark bottom left side hanging panel, wear, metal tarnish, train hem stained) fair. Ohio State University Historic Costume & Textiles Collection.



220: BLOND CHANTILLY LACE & PRINTED MOIRE GOWN c. 1914

USD 300 - 500

Asymmetrically draped bodice, long sleeves, back stock collar & asymmetrical skirt drape of silk patterned tulle w/ woven blond Chantilly lace, roller printed patterned moiré, gathered & draped asymmetrical swagged overskirt & long weighted fishtail, wax bud & waxed silk floral & foliate embellishment to right front SH & left front W, paired strand of faux blister pearls at W, tiered skirt of silk tulle & china silk, B 38", W 27", L 57"-90.5", (1 bunch of wax flowers detached, pearl loss, stains along collar edge from wire, flowers discolored, stained, many tiny-2" holes to sleeves, W band shattered, metal tarnish, 2.5" V cut back hem lining, train tip stained) fair. Ohio State University Historic Costume & Textiles Collection.



221: SEQUINED & BEADED TULLE PARTY DRESS, 1920s

USD 400 - 600

Tunic overdress of black tulle embroidered w/ black & blue sequins, iridescent bugle & faceted French jet beads in stylized open work foliate motif, integrated black silk satin underdress, horizontal pleated tulle insert at CF, gathered tulle cascade over right H & handkerchief tulle sleeves terminating in beaded tassel, red & pink cloth roses w/ trailing vine at left front H, B 45", W 45", L 48", (wear & holes to sleeves, minor bead loss, 1" repair left front panel, 0.25" hole back collar, wear to applique, 1.5" hole left sleeve, wear to clasp closures) very good.



222: TWO BLACK SILK MOURNING CREPE DRESSES, 1920s

USD 300 - 500

1 w/ appliquéd & embroidered machine lace in deep V at front & back neckline, lined in ecru silk crepe w/ black silk layer from B to hem, B 41", W 37.5", L 43", (spot stains to lace & few at hem, collar & underarm lining damaged) very good; 1 w/ illusion neckline in white mm Chantilly lace, self-rosettes at clavicles, black mm open Chantilly lace skirt godets from ogive drop W, lined in black silk from B to hem, B/W 35", L 44.5", (1.5" seam opening left SH, flowers worn/frayed, 1" repair back neckline, 3 marks to lap, 1" hole at left W SS, belt missing & 1 loop detached) good.



223: TWO EVENING DRESSES, MID-LATE 1920s

USD 500 - 800

1 silver silk lace, illusion neckline backed nude crepe w/ grey crepe back satin integrated underdress, slightly bloused at drop W, self W band w/ Deco paste buckle, B 48", W 45", L 50"-56", (wear & stone loss to buckle, few broken brides, 0.25" spot stain right front W) excellent; 1 cream crepe back satin Egyptian shendyt style party dress w/ plunging V neckline, ruched SH straps, imitation cut away back w/ inserted crepe panel & free floating strap from collar to hem, CF W gathered & ruched w/ paste & carved bone buckle, original self slip, label "Lester-Scott New York", B 38", W 40", L 43", (scattered light spot stains, stained underarms & 1 starting to tear, discoloration/stone loss to buckle, few pulls) very good.

December Vintage - Decades of Decadence



224: TWO BLACK SILK DAY OR EVENING DRESSES, EARLY 1920s

USD 300 - 500

2-pc black silk georgette ensemble w/ silk chainstitch embroidery & red, pink, white & blue seed tambour beadwork, black silk satin underdress w/ perm pleated skirt, B 44", W 43", L 25.25", gimp bodice B 38.5", W 40", L 48", (2.5" seam opening right SH& 0.5" right underarm, 3.75" tear at left SH, bead loss, small holes, 1" x 0.75" repair right sleeve, left SH strap detached & right worn, 4.75" seam opening at W of gimp, lining shattered) fair; 1 black silk satin w/ silk Chantilly lace underbodice, slvs & skirt insertions, label "The Best KLEINERT Reg U.S. Pat. Off, Style 525 Body A34" & "Miss Ethel Inc. Gowns & Importers, 54 W 57th St. New York", B 42.5", W 37", L 46.5", (sleeves worn, underarm stains, spot stains, front right clasps removed) good.



225: TWO PARTY DRESSES, 1920s

USD 400 - 600

1 lime green silk crepe bodice, drop W w/ attached black crepe skirt w/ rows of rivetted rhinestones arranged in grid, deep V-neckline w/ black silk crepe appliqué to stylized bow at CF edged w/ blue green crepe & outlined in paired row of rhinestones, B 40", L 40", (stone discoloration/loss, wear/stress holes in appliqué, 1.25" seam opening front H, sm stains, scattered tiny holes in skirt); 1 midnight navy crepe de chine w/ rows of cobalt blue faceted seed beads in radiating geometric & paired twining lattice motifs, 2 couture beads at right seat & hem lining, B 43", W 40", L 40", (bead loss, closures removed left SH, 0.5" seam opening W closure & 2.5" back W) both very good.



226: UNLABELED LUCILE EVENING DRESS OR EXCEPTIONAL COPY,

USD 800 - 1,200

Sleeveless grey silk tulle w/ machine embroidered frond, floral & bud tracery appliqued to wide SH straps & tiered skirt, pink & cream silk satin band trims w/ wrapped threadwork & couched metallic cord borders, pink silk satin flat bow w/ swagged tails to CF B & pink silk satin cummerbund W band w/ oversized flat bow at back left H & cascading tails, wired silk & metallic thread panaches at W, flowers, buds, fruits & leaves w/ faux amethyst glass beaded flowers, silk crepe & satin back crepe layered underskirt, possibly unlabeled Lucile, B 36", W 26.5", L 50.5", (sash & CF bows shredded, wear/discoloration, 2 holes left armhole, flowers worn & tarnished w/ some tacks undone) very good. Ohio State University Historic Costume & Textiles Collection.



227: ONE DAY & ONE EVENING DRESS, LATE 1920-EARLY 1930s

USD 400 - 600

1 lavender silk crepe de chine day dress w/ embroidered net overlay & cuff insertions, handkerchief hem drop, B 39", W 36" L 44"-55", (tassel detached & worn, crepe de chine structurally sound, net very fragile w/ the following damages: 3" x 2" & 2" x 2" lace sections missing in skirt panel, large holes underarms, spot stains & shattering spots) fair; 1 cream silk crepe back satin gown w/ mm lace sleeves & CB neckline insertion, 3 paste set button accents along raglan sleeve seam w/ 3 decorative loops, bateau neckline to plunging V at CB w/ dramatic swallow tail reverses, wrap W tie inserted at CB & wrapping to tie at CF, drop W w/ ogive arch inserted flared skirt, B 35", W 30", L 53", (stone loss, stains to sleeves, small marks/stains) excellent.



228: THREE BLACK EVENING DRESSES, 1930s

USD 300 - 500

1 silk velvet w/ faux wrap front, satin W band w/ scarlet backed beaded passementerie at left front H, B 44", W 40", L 44", (bead loss & wear, repairs to underarms & cuffs, large repair under front drape, 4" repair right H, wear, re-made from coat) fair; 1 long sleeve w/ self-covered CF buttons & loops, embroidered black satin floral appliqué to broad hem band, B 39", W 33", L 47", (faded, tiny seam opening at CB collar) very good; 1 black georgette w/ decorative fagoting along black satin yoke, at SHs & sleeves, decorative satin covered square buttons along fitted low sleeve, B 36", W 31", L 46.5", (slip N/I, tears at seams in sleeves & armholes, small holes, W snaps detaching) fair.



229: PRINTED CREPE ORGANZA PARTY DRESS, MID 1930s

USD 400 - 600

Crepe organza printed in graphic floral motif imitation of hand painted watercolor & ink w/ yellow, green & brown flowers, butterfly sleeve w/ V-neckline front & back gathered into CF w/ stylized self rosette, very fine silk gauze under sleeve, self belt w/ paste buckle, label "GNC", B 38", W 34", L 59.5", belt Wd 1.5", L 27.5", (slip N/I, wear & tiny-0.5" holes to under slv, few tiny spot stains, 1.25" opening front W, belt worn & w/ stone loss/discoloration) excellent.

December Vintage - Decades of Decadence



230: TWO BLACK COCKTAIL OR EVENING DRESSES, 1930-1940s

USD 300 - 500

1 long-sleeved cocktail dress w/ sequin embroidered mm lace collar & 3 applied bands to skirt, vertical ruching at CF B & W, zip at end of fitted sleeve, B 36", W 26", L 53", (sequin loss, hem letout & discolored, tiny pulls, tiny pulls to lace) very good; 1 floor length evening sheath of hammered crepe w/ square neckline & broad SH straps, B 37", W 30", L 64.5", (belt missing, few small seam openings, scattered tiny-sm holes, cluster of tiny-0.5" stains above 1 knee, SH straps detaching back) good. The Costume Collection of the National Society for the Colonial Dames of America.



231: IMPRESSIONIST PRINTED SILK DAY DRESS, 1930s

USD 400 - 600

Printed silk w/ Impressionist water lilies, hedge & floral motifs, SH yoke extending into tie at CF, sleeveless w/ integrated knife pleated capelet, single stitched down inverted box pleat at CF, skirt w/ let out box & knife pleated CF, CB self-covered button closures, self-covered belt, B 43", W 35", L 48", (small areas of shattering across SH w/ small glue spots, 1.5" hole to lap, small holes in capelet & collar facing) fair.



232: THREE SILK VELVET PARTY DRESSES, 1930-1940s

USD 400 - 600

1 black bias cut w/ bateau neckline, tulle SHs w/ broad ruched sleeve band, self-belt w/ Deco paste buckle, B 43", W 38", L 56.5", (ruching coming undone, 0.25" tear at CB, 1.5" repair w/ 0.5" tear at left SH) good; 1 purple w/ interlaced draped bands from SHs & W to clasp w/ double starburst paste pin at CF, plunging V CB neckline, flared skirt, c. 1930, B 38", W 38", L 50.5", (paste discolored) excellent; 1 black w/ Austrian drape B, 2 small bows at W front & back, cap sleeves, self-covered cord clasped at CB for elaborate peekaboo, label "Frank R. Jelleff Inc. Washington DC", B 32", W 28", L 52"-55", (sm seam openings & repairs throughout, 10" repair at hem & 5.5" below buttons, tiny-0.5" holes, 1 button missing) fair.



233: CUBIST ART DECO INSPIRED ROBE, 1930s

USD 400 - 600

Kimono inspired robe of silk woven in imitation crepe w/ Cubist Art Deco motifs in geometric architectural & organic shapes, apricot crepe silk borders, B 50", W 58", L 41", (fraying at right SH seam, scattered tiny-0.5" spot stains & few holes, 1.5" partially undone repair at right armscye & 2.25" at left) very good.



234: TWO SILK VELVET EVENING GARMENTS, 1930s

USD 500 - 800

1 forest green long sleeved evening gown w/ slight draped cowl at CF, full sleeve pleated into SH & w/ stiffened support, deep peekaboo CB neckline from nape to W, self-belt w/ snap closure, B 36", W 28", L 60"-64", (rolled hem w/ small sections coming undone, 0.25" snack below knee, tiny hole left back keyhole) excellent; 1 nutmeg brown coat w/ free front, wide rever from low W into deep draped collar caught up at CB w/ functional long fall ties, B 34", W 37", L 37", (0.75" hole left underarm, few tiny snacks right front panel) very good.



235: HEAVILY BEADED & SEQUINED EVENING GOWN, c. 1930

USD 300 - 500

Black net heavily embellished w/ black bugle beads, jet rose cuts & black sequins in sunburst motif radiating from left H, beaded & sequined double SH straps diverging at top of SH, slightly flounced hem, synthetic underdress w/ attached silk satin broad hem band, B 35", W 34", L 58", (bead & sequin loss, wear, net fraying around straps & hem) good. The Society for the Preservation of Federal Hill & Fell's Point.

December Vintage - Decades of Decadence



236: TWO BLACK SILK VELVET EVENING COATS, AMERICA, LATE

USD 300 - 500

Black velvet coat w/ stand collar asymmetrical closure, pleated SH, full upper sleeve ruched at underarm sleeve & fitted lower sleeve, cream silk lining, B 36", W 31", L 56.5", (1 button covering detached & included, small patches of crushing at lap & hem 2 tiny snacks at left SH, 1.25" seam open at back SH, sm spot stain CB lining); 1 w/ asymmetrical front closure, smocked SH, draped dolman sleeve extending into bloused back panel, hammered satin bone silk lining, label "H.P. Selman & Co. Louisville?", B 36", L 56", (1 button detached & included, lining shattering, minor crushing, 3.5" partially re-torn repair right underarm) both good. The Costume Collection of the National Society for the Colonial Dames of America.



237: ECLECTIC EVENING GOWN, EARLY 20TH C & 1940s

USD 400 - 600

2-pc c/o of tea dyed Edwardian bodice of mm & authentic fillet, mm lace, crochet & chemical lace imitation nandutti, stock collar, cutwork plastron edged w/ ruched silk satin & lace insertion w/ bird motif, 3 flounce sleeves consisting of varied lace, over early 1940s soufflé skirt w/ tiered back & net gimp bodice, bodice B 37", W 28.5", L 19", gimp dress B 32", W 26", L 66", (stains to both, 3" hole right underarm & scattered broken brides in bodice, 2.5" tear left armscye gimp bodice & small holes right SH, fraying & light stains to skirt) good.



238: PEAU DE SOIE WEDDING GOWN, SAN FRANCISCO, MID 1930s

USD 300 - 500

Champagne peau de soie wedding dress w/ draped choir-boy collar, CF self-covered buttons, long gigot inspired sleeves tapering to fitted pointed cuff, bodice gathered under bust & falling at CB to V at CB, full attached skirt w/ circular train, fingerloop at either side of train, horsehair hem facing, label "Livingston Bros. San Francisco", B 38", W 29", L 104", (tiny pulls, button clasps worn on cuffs, zipper tarnish, small spot stains hem & train, hem mesh lining very worn & detaching, top buttonloop detached, scuffs to front at W) good.



239: BONE SILK CHARMEUSE WEDDING DRESS, 1930s

USD 300 - 500

Bone silk satin charmeuse wedding dress w/ slightly draped neckline & applied draped collar band pleated over SHs & falling in dramatic swag at CB attached w/ single button below W, long shaped sleeve gathered at SH & elbow, fitted shaped cuff & CB from neck to train w/ single row of self-covered buttons, modest tear-drop train, B 34", W 26", L 78.5", (tiny spot stains to collar, few 0.25"-0.5" spot stains, train edge stained/discolored) excellent.



240: TRAINED LACE WEDDING COAT, c. 1937

USD 300 - 500

White mm lace trained coat w/ scalloped Medici & choir-boy collars trimmed w/ row of cotton florets intersperse w/ leaves on paper wrapped wired vine, CF silk satin covered buttons & loops, full sleeve pleated to SH & tapering to fitted shaped lower sleeve w/ single row of satin button closures, bell shaped modest train, B 35", W 31", L 59"-68", (buttons worn, light discoloration, flowers & leaves around collar worn w/ small stains, scattered tiny-0.75" holes, 2" x 0.75" hole left SH) good.



241: TWO GREEN CREPE AFTERNOON DRESS, EARLY 1930s-MID 1940s

USD 300 - 500

1 loden green crepe day dress w/ flat faceted nailhead & rhinestone brooch frame, knife pleats to left H, slender tie belt, CB zip closure, mid 1940s, label "A Mil Jay Original", B 38", W 28.5", L 43.5", (discoloration throughout, tiny hole CF above hem); 1 deep forest green crepe day dress w/ draped front panel to back ties clasped w/ embossed bronzed leaf buckle, silk velvet draped front collar clasped at SH w/ round shield shaped buttons, sleeves w/ velvet insertions & fagoting, early 1930s, B 45", W 38", L 46", (wear at left underarm & back of neck, scattered tiny-0.5" stains esp. at lap, tiny snack to right sleeve) both good.

December Vintage - Decades of Decadence



242: TWO BLACK VELVET EVENING DRESSES, LATE 1930-1940s

USD 300 - 500

1 floor length w/ black mm lace yoke & band collar w/ elaborately cut & symmetrical appliqués, keyhole CB, left SS snap & hook & eye closures, B 40", W 29", L 59", (broken brides & scattered sm holes in yoke, belt removed) very good; 1 ankle length w/ V-neckline & sleeves trimmed w/ black sequined corded trim, SHs w/ black & pink sequined appliqués, back neckline backed w/ ruched sequined tulle, full flared skirt, B 40", W 36", L 55.5", (sequin loss, two 0.25" holes right SH seam, 1.5" x 2" patch repair back right W, seat stains) good.



243: ONE COCKTAIL & ONE AT HOME DRESS, AMERICA, c. 1940

USD 300 - 500

1 pink hammered crepe, bodice w/ standing Nehru collar, CF self covered decorative buttons over hook & eye closures, slashed peekaboo sleeves w/ gel sequin embroidery, gathered & smocked SH, bodice front w/ elaborate gel sequins appliqués on net ground, piped bodice hem w/ ray pleated skirt, late 1930s, B 34", W 24", L 55", (sequins worn & minor loss, light stains/discoloration, modified at CF closure) excellent; 1 synthetic peach dress w/ shaped satin pleat at wrap front & down leftside, belt w/ purple paste gems, c. 1940, label "Textron", B 51.5", W 33", L 58", (light stains left sleeve & back of neck, 0.25" hole left cuff, tiny pulls/stains, CF closures loose) good.



244: ADRIAN WOOL TWILL SKIRT SUIT, 1940s

USD 800 - 1,200

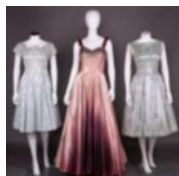
Sage green wool gaberdine skirt suit w/ pale gold & brown inlaid chevrons to B & single diagonal band at right lower sleeve, yoke scalloped across CB, piped keyhole pockets, single faux stage horn CF button closure, lined in ecru crepe, matching skirt w/ 3 shaped darts at back & 4 at front, label "Adrian Original", B 36.25", W 29.25", L 24", skirt W 24", L 28.5", (lining w/ stains & few small holes, closures moved, skirt hem facing shattering in spots) excellent.



245: TWO SATIN COCKTAIL DRESSES, AMERICA, 1950s-1960s

USD 300 - 500

1 magenta silk satin w/ asymmetrical scoop neckline embellished w/ marquee pink prongset paste, magenta seed beads & rhinestones from right shoulder across neckline & at wide left shoulder strap, fitted W, original self covered leather belt, slightly flared calf-length skirt, left side seam closure, label "Pattulo-Jo Copeland", B 38", W 27", L 47", (bead loss, underarm stains, seam opening at SH strap); 1 emerald green silk satin w/ wide scoop neck, short sleeve, princess line W w/CF & CB inserted self ties, center back zip closure, label "Anne Fagarty Margot Inc.", B 37", W 25.5", L 44", (0.75" stain lap & 0.25" back right SH blade) both very good. Ohio State University Historic Costume & Textiles Collection.



246: ONE EVENING GOWN & TWO COCKTAIL DRESSES, 1950s-1960s

USD 300 - 500

1 pale blue monochrome damask in lily motif w/ stylized scalloped neckline, broad CB tie, dolman cap sleeves, fitted empire W line into flared skirt, label "Ro-Nel of California", B 35", W 27", L 40.5"; 1 ombré blush to aubergine satin w/ sweetheart neckline, fitted sequined bodice, broad SH straps, w/ sequined faux button closure, floor-length circle skirt, label "Dorothy Lord Boston", B 33.5", W 28", L 60", (sm. Stains & pulls, sequin loss, discolored hem); 1 sleeveless pale blue satin w/ weft patternsprig stripe in Marguerite motif, bateau neck into V at CB, fitted W yoke & oversized self bow at CB, flared knife-pleated skirt & integrated tulle petticoat, label "Best & Co", B 34.5", W 25.5", L 43", (sm. stains) all good-excellent.



247: TWO TUNIC DRESSES, QUEBEC, 1960s

USD 300 - 500

1 blonde twine woven natural fiber sleeveless tunic overdress w/ paired basket-woven covered buttons at tab closure, free front, SS slits & decorative self fringe across CB, B 39", L 37.5", (light wear, self fringe at B worn, 1"-3" stains CB SH blades) very good; 1 sleeveless tunic dress woven in wool w/ chenille & cord interspersed in autumnal shades w/ long self warp fringe & single knot tasseled hem, label "Martine Gruber Fait a la main au Quebec", B 32", L 44.5", (light wear, minor pilling, fringe messy) excellent.

December Vintage - Decades of Decadence



248: CANTON SHAWL DRESS, 1960s

USD 200 - 400

Bodice of cream crepe w/ silk Schiffli embroidery, sleeves of twill satin w/ appliquéd florals w/ drawn threadwork centers & falling leaves, skirt of cream satin w/ front panel of silk surah w/ silk embroidered floral & pheasant motifs, B 39", W 32.5", L 54.75", (tiny spot stains, embroidery wear at SHs, tiny pulls) excellent.



249: SET OF TWO TWA PAPER DRESSES, AMERICA, c. 1968

USD 300 - 500

Both reinforced paper unworn & pristine: 1 ?French Cocktail? gold mini dress for themed flights to Paris w/ standing ruff neckline, CF closure & slender self-tie belt, B 40", L 35"; 1?Manhattan Penthouse Pajamas? for flight to New York City 1-piece charcoal jumpsuit w/ silvered paper neckline to flat bow at CF & matching broad W tie, B 40", H 49", L 58", inseam 26.5", (both w/ crease & fold lines from storage) both unworn condition.



250: APPLIQUED SUEDE TROUSERS, LONDON, LATE 1960s- EARLY

USD 300 - 500

Blue suede flared ladies trousers w/ loden & brown cloud motif appliques & insertions to lower leg & at left front H, oxidized riveted overlapping discs at scalloped CF flap w/ snap closure, label "Corduba Suedewear, London", W 28", L 42.25", inseam 31.5", (buttons & snaps worn/tarnished, wear/discoloration, heavy wear to groin w/ holes to lining, stains to thighs) good. From the Estate of Monique Van Vooren.



251: HANDPAINTED HIGH WAISTED JEANS, 1970s

USD 300 - 500

Hand painted high waisted denim trousers w/ horizontal flap pockets at front W, zip & snap closure at CF, handpainted portrait of exotic dancer, at lower right leg & back left seat, W 31", L 44.5", inseam 33", (paint chipping to button, stains to lap, pocket linings damaged & w/sm tears at corners, paintings worn & cracking, 0.25" hole right lap) good.



252: GUNNE SAX, SAN FRANCISCO, 1970s

USD 400 - 600

Oatmeal cotton in young Elizabethan Revival style, w/ full balloon sleeve, deep V-neckline at CF, bodice front into extended apron panel & lower fitted sleeves of mm cotton lace, hemp passementerie trim, label "Gunne Sax by Jessica, San Francisco", B 33", W 28.5", L 55.5", (1.5" x 0.75" stain right cuff, 1.5" stain left B, 0.25" red mark right cuff, wear to trim & cord tie) very good.



253: CHARLES DEMERY TWO PIECE OUTFIT, FRANCE, 1970s

USD 300 - 500

2-pc ensemble c/o sleeveless crop top w/ free front & CF self-ties & matching skirt in traditional Provencal resist dyed & printed cotton w/ overall floral grid & border patterns to gathered godets & bodice hem, label ?Soleida, Charles Deméry, Tarascon Avignon Paris", B 34.5", W 60.75", L 16.25", skirt W 24.5", L 26", (light wear) excellent.



254: PIECED FUR & LEATHER COAT, AMERICA, 1970s

USD 300 - 500

Trench coat of brown leather w/ inserted geometric bands of 2-tone blond & brown mink in diagonal double basket weave design, convertible collar, self-tie belt closure, label "Furs by John Keffas est. 1910 Jersey City" & "Janina" embroidered on interior, B 44", W 39.5", L 37", belt 2.75" x 75.75", (leather worn & tacky esp. at underarms) very good.

December Vintage - Decades of Decadence



255: SCHIAPARELLI MINK STOLE, FRANCE, 1950s

USD 300 - 500

Collared & caped stole, cafe au lait silk lining w/ woven Schiaparelli signature, label "Schiaparelli Paris" & "The Broadway Southern California", SH-SH 18", L 19"-29.5", (fur pressed against grain in spots & lightly worn, tiny areas of shedding, spot stains to lining, wear at edge of lining) good.



256: ELSA SCHIAPARELLI COUTURE TREE BARK CAPELET, PARIS, SS

USD 1,200 - 1,500

Black crushed rayon ?Tree Bark? crepe capelet w/ convertible notched collar, oversized CF buttons encrusted w/ faceted black jet, SS arm slits, single tuck at back SH blades for shaped fullness over SHs & at CB, lined in fine black silk faille, label "Schiaparelli, Paris", couture tape #95319, SH-SH 18", L 26"-28", (1.5" seam opening left arm slit, 1" & 1.25" seam opening right arm opening, group of tiny white stains at back right torso) excellent.



257: CHRISTIAN DIOR STRAPLESS BALLGOWN, LONDON, c. 1958

USD 1,200 - 1,800

Black strapless silk taffeta ballgown w/ asymmetrical wrapped front bodice formed from crossed back skirt panels, full slightly trained skirt, c. 1958, label "Christian Dior, London", couture # "4322", "Holt Renfrew & Company Limited", B 40", W 31", L 48.5"-52", (bones poking through, 0.25"-0.75" tears in hem or zip facing, tacks broken at neckline, 1.5" line stain at seat, few tiny-0.25" stains, petticoat & bodice structure worn) very good. Provenance: Elena Jofré Serey de Chávez (1908-1987) of Santiago, Chile, wife of Chilean diplomat who served in consular posts in Peru, Canada & the USA, including as Consul General in NYC. Commissioned oil painting, dated 1965.



258: YSL FOR DIOR DAY ENSEMBLE, PARIS, SS 1959

USD 800 - 1,200

YSL for Dior ensemble of navy wool twill c/o cropped sailor style top w/ wide collar w/ bias band trim & draped flat bow at CF over three decorative composite buttons, bias band trim above hem for faux belt w/ paired snap closure at CB, weighted hem, lined in navy silk organza over hair canvas & navy silk, elbow length sleeves, matching undress w/ gimp bodice & plastron, label "Christian Dior Printemps-Ete, 1959, #97796", B 39", W 38", L 21.5", skirt B 36.5", W 27.5", L 43", (tiny repair left W CB on top, paint on skirt zip pull chipping) excellent.



259: BRONZE FORTUNY PEPLOS GOWN, VENICE, 1920-1930s

USD 4,000 - 6,000

Pleated silk gown trimmed at top edge of SLV, SS & peplos hem w/ striped Murano glass beads, original bronze stenciled silk satin belt signed on back at loop closure, signed tape at interior underarm "Fortuny dePOSE Made in Italy?", original box w/ sticker ?Mariano Fortuny, Venice?, B 28"-42", L 48"-53", (box damaged, minor pleat loss neckline & underarms, broad discoloration CB, 2" & 3" seam openings inner neckline, 1.5" cord unravelling left neckline, belt modified) very good.
