

Augusta Auctions



Spring Fling - Vintage Visions

Wednesday - May 12, 2021

Spring Fling - Vintage Visions



1: PINK SILK TAFFETA EVENING GOWN, 1868-1870

USD 500 - 800

2-pc gown of pink silk taffeta, puff sleeves overlaid w/ net, pleated net across front, over SHs & to CB, trio of cloth roses to SHs & CF, black silk velvet ribbon inserted to lace at bateau neckline & sleeve cuffs, CB closure w/ silk eyelet, gored & trained skirt w/ cartridge pleated CB, B 39", W 21.5", L 13.5", skirt W 25", L 43.25"-58.5", (laces on bodice broken, roses frayed, 1.25" stain left skirt H, small cluster of stains lap & CF knee, hem dirty) very good. Museum of the City of New York.



2: FIVE PIECE CONVERTIBLE GOWN W/ MATCHING CAPE, c. 1868

USD 500 - 800

4-pc brown silk moiré gown w/ chenille trims terminating in silk covered grelot to pleated front trim, cuffs & in ribbon pattern on overskirt, day bodice B 37", W 28", L 15.5", (3 buttons detached & included, 5.5" trim detaching front, missing fringe collar & cuffs, right underarm worn), evening bodice B 36", W 27.25", L 14", (5 detached & 4 included buttons, sleeve tulle fraying), skirt W 27", L 44.5"-56.5", (several missing baubles & broken trims, 0.5" spot stain back right H), cape of brown velvet, SH-SH 18", L 28.5", (5" tear back neck, lining stained, 2" seam opening front collar, 6" trim detach back right), boned corselet w/ double peplum tabs, W 28.5", L 2.5-21", (trim detaching, several pulls) all good-very good. Museum of the City of New York.



3: TWO PIECE PATTERNED SILK GOWN, c. 1860

USD 500 - 800

2-pc gown of jacquard silk w/ satin & ribbed silver roses, tulips & delphinium on blue wave patterned ground, fitted bodice w/ pagoda sleeves, neck & bodice opening edged w/ picot & satin edged velvet ribbon, knotted & tasseled silk fringe, CB lacing, full cartridge pleated skirt, B 32", W 24.5", L 16", skirt W 26", L 44.5", (underarm spot stains & lining removed, bones poking out or missing, detached hook & eyes, skirt W band replaced, tiny-0.25" spot stains), bobbin lace dickie, SH-SH 20", L 18", (staining & discoloration, tiny-0.5" holes, 1.5" partial repair right CF) good- very good, dickie fair; t/w jacquard remnants. Museum of the City of New York.



4: STRIPED PLAID SILK TAFFETA DAY DRESS, c. 1860

USD 400 - 600

2-pc day dress of brown striped plaid silk taffeta in brown, aubergine, black, cream & pink, capped pagoda sleeve trimmed w/ multi colored ribbon & copper silk fringe, CF hook & eye closure w/ decorative satin & velvet acorn buttons, full box & knife pleated skirt, B 36.5", W 26.75", L 15.5", skirt W 27", L 47", (tiny pulls & wear around collar, underarms & W, 2 decorative buttons missing, fringe worn, no CB W closures skirt, hem saver worn, 0.5" lap tear) good; t/w pumpkin silk overskirt w/ wool lace trim, W 25", L 9"-37", (5" stain lap, trim worn CF W band) Museum of the City of New York.



5: GREEN & BLACK PLAID TAFFETA DAY DRESS, 1857-1858

USD 400 - 600

2-pc day dress of green & black plaid taffeta w/ barred ribbon stripe, fitted bodice w/ Princess line extended peplum, CF hook & eye closure, double tiered pagoda sleeve, full box pleated & gathered skirt, B 36", W 27", L 24.5", skirt W 26", L 47", (5.5" stain CB & underarms, shattering along bones, hem saver worn, 5" repair CB W, 1.5" of W band replaced CB, scattered light stains & tiny-small holes throughout skirt) fair. Museum of the City of New York.



6: YOUNG LADIES TRAINED GOWN, 1866-1867

USD 400 - 600

Gown of apricot silk taffeta, trimmed w/ stiffened gauze edged w/ pink satin mock piping to extended open sleeves, belt & skirt, belt w/ pink satin bow to CB, B 32.5", W 21", L 51"-76", (train stained, two 1" spot stains front left, 1" shattering in train, 3" at left SH & 0.25" in B) good; t/w jacket of cream silk taffeta, (stained) Museum of the City of New York.

Spring Fling - Vintage Visions



7: ROSE PINK DINNER GOWN, c. 1868

USD 500 - 800

2-pc dress of finely ribbed rose pink silk, evening bodice w/ bateau neckline, double bias trim to neckline & cap sleeve, piped armhole, CB silk covered wood button embroidered w/ 5 pointed stars, full gored & trained skirt, B 36", W 21.75", L 13.5", skirt W 22", L 42.5"-60", (underarm stains, 2.75" & 1" stains B, lining stained, 0.5"-2" spot stains to skirt, 2 tiny holes at left SH) good-very good. Museum of the City of New York.



8: PLAID SILK TAFFETA DAY DRESS, c. 1860

USD 400 - 600

2-pc day dress in lavender, charcoal & cream silk plaid, CF thread covered gum drop button closure, 2-pc military sleeve w/ multicolor floral ribbon trim edged w/ black & tan looped cording, broderie anglaise collar, full box pleated full skirt, B 38.5", W 29", L 15.5", skirt W 27.5", L 46", (cotton collar mostly detached, black & white trim fraying, 0.25" hole left sleeve, silk worn CF, stains throughout, hem binding worn, W band separating right H, scattered pinholes & tiny stains to skirt, lines of stitch removed near W-altered) fair. Museum of the City of New York.



9: CONVERTIBLE PATTERNED SILK GOWN, 1850-1855

USD 500 - 800

3-pc handmade celadon silk gown w/ damask calligraphic stylized acanthus leave on twill satin ground, evening bodice w/ piped armhole & double piped W, broad woven passementerie trim to neckline & cap sleeves, CB hook & eye closure, B 34.5", W 24.5", L 13.5"-17", day bodice w/ long shaped sleeves & epaulette caps, B 38", W 24.5", L 13.5", box & knife pleated skirt W 27.5", L 43.75"-45.5", (day bodice: 3.5" light stain right B, wear CF collar, underarms stained, 0.25" tear left underarm, skirt: W band shattering, tiny-1" spot stains, pulls to silk below W band) evening bodice excellent, day bodice & skirt good. Museum of the City of New York.



10: TWO SHAPED & EMBROIDERED TAFFETA SHAWLS, 1850 & 1865-70

USD 400 - 600

1 shaped shawl of deep celadon silk taffeta w/ silk embroidered undulating bud & blossom motif, manipulated self-edging & silk fringe, c. 1850, 16" x 70", (3" detached fringe) excellent; 1 white silk taffeta shaped shawl w/ white & yellow silk embroidered in double tambour band & floral bows, cream silk fringe interspersed w/ yellow crimped silk tassels, lined in hand quilted China silk, most likely French, 1865-1870, 16.5" x 68.5", (few tiny-small spot stains) very good- excellent; t/w dark blue taffeta shaped shawl w/ black silk velvet appliqué, c. 1865, 16.75" x 75", (discoloration & tiny holes near edge) Museum of the City of New York.



11: DOLMAN STYLE MANTLE, c. 1880

USD 400 - 600

Dolman mantle of ivory silk ottoman w/ embroidered vines, Peking knots & crystal beaded accents, scalloped collar w/ fringed edging continuing down CF, twisted silk fringe w/ intermittent press pleated ribbons, China silk quilted lined, SH-SH 15", L 23.5"-38", (0.75" stain B, lining stained) excellent. Museum of the City of New York.



12: MOTORING ENSEMBLE, c. 1912

USD 300 - 500

Undyed silk pongee motoring ensemble c/o duster w/ geometric layered applied panels to front & let out pleated back, black silk collar & cuffs w/ corded faux button holes & flat brass shanked decorative buttons, 3 large crocheted toggle button CF closure, skirt w/ top stitched let out deep pleats for fullness, B 40", L 55", (pilling, buttons scratched, stains around hem esp. to CF), skirt W 24", L 41", (pilling esp. to lap, 1" stain cluster CF W, two 0.25" holes above hem) both good-very good. The Society for the Preservation of Federal Hill & Fell's Point.

Spring Fling - Vintage Visions



13: LINEN MOTORING DUSTER & MATCHING CAP, 1910s

USD 300 - 500

1 linen motoring duster w/ deep turn back cuffs, collar & buttons of varnish cotton, matching crested cap w/ extended ties to nape, B 40", L 51", cap circ. 26.5", depth 9", (edging worn on both, buttons stained, tiny- 1" spot stains throughout, tacks on CB panel & cuffs broken, pull on cap brim) good.



14: PARTI-COLORED DENIM OVERALLS & VEST, 1920-1930s

USD 300 - 500

1 pair parti-colored & striped denim clown's overalls, 1930s, H 42", W 44", L 65", inseam 32", (spot stains, 1" repair to crotch & 0.75" inseam, fabric worn around cuffs & buttons, metal oxidizing) fair; 1 colorful gathered rosette "yo-yo" pieced vest of patterned & plain silk, 1920-1930s, B 44", L 23"-27", (several pieces worn) very good.



15: TWO IRENE SUMMER SKIRT SUITS, AMERICA, 1950-1957

USD 400 - 600

1 green & lavender changeable raw silk summer skirt suit w/ short sleeved jacket, CF self-covered button closures & vented back, lining & original blouse of printed silk in shades of blue, purple & olive green w/ inset B plate yoke, matching calf-length skirt, label "Irene!", 1950-1952, B 41", W 34.5", L 25.5", blouse, B 42", W 38", L 26.5", skirt W 30.5", L 25.5", (2 small holes near W closure); 1 turquoise green silk surah skirt suit w/ 3/4 length sleeves, 3 oversized CF button closures w/ applied band & double tabbed accent to B, matching calf-length skirt, label "Irene, Exclusively for Neiman Marcus", 1952-1957, B 38", W 30.5", L 23.5", skirt W 26", L 27", (tiny stain CB band) (both w/ hanger imprints on skirt) all very good-excellent.



16: ONE CASHIN & ONE IRENE DAY ENSEMBLES, AMERICA,

USD 300 - 500

1 turquoise wool shaped summer coat w/ glove length sleeves, gold-tone CF button closures & extended SS slits, empire W sheath dress w/ bateau neckline & slender self-tie belt, label "Bonnie Cashin Original", 1952-1954, coat B 42", W 36", L 33", dress B 38", W 30", L 39", (1 button detached & included, 0.75" stain dress B, light underarm stains & wear); 1 green, blue & black silk tweed jacket w/ glove length sleeves & square neckline accented w/ wide band inserted for closure, matching calf length skirt & blue silk blouse w/ applied tab from right clavicle & inserted at left, invisible CF zip closure, label "Irene!", 1955-1960, jacket B 41", L 23", skirt W 25", L 27.5", blouse B 40.5", W 35", L 21.5", (light wear/discoloration) all good to excellent.



17: ONE IRENE & ONE CASHIN SUMMER COATS, AMERICA, 1949-1955

USD 300 - 500

1 oatmeal & grey twill wool coat w/ shaped navy border band to neckline, CF & hem & chartreuse crepe lining, label "Irene!" c. 1955, B 46", L 39", (scattered tiny-0.25" holes) fair; 1 mocha linen blend coat w/ cuffed dolman glove length sleeves, black velveteen trimmed collar, self-edged crescent pockets, monkey fist knot frog closures, label "Bonnie Cashin Design" & "Grembrier Sports Shop Julius Garfinkle & Co. Washington DC", 1949-1952, B 48", L 40.5", excellent.



18: ADRIAN TAILORED EVENING COAT, AMERICA, c. 1947

USD 500 - 800

Black wool evening coat w/ broad notched shawl collar lined at neck w/ caracul lamb, paired decorative buttons at B & above nipped W, single functional button closure at W, deep shaped caracul lamb cuffs, 2 tabbed H pockets, deep vent at CB, lined in black silk crepe, label "Adrian Custom", c. 1947, B 46", W 34", L 44.75", (light wear at cuffs) excellent.



19: TWO INTERCHANGEABLE BONNIE CASHIN ENSEMBLES, 1965-1972

USD 400 - 600

All but dress label "Sills, A Bonnie Cashin Design": 1 weathered grey wool coat w/ orange leather edging & tie belt, 1965-1972, B 46", L 42.5"; 1 orange leather ensemble c/o jacket w/ raglan sleeves, brass toggle CF closures, quilted hem & cuff, matching trousers w/ toggle tabbed SS slit, 1967-1972, B 41.5", L 28", trouser W 26.5", L 39.5", inseam 28.5", (metal tarnish, spot stains lining, 1" stain/scratch right back, 0.25" divot below back collar, trousers: light stain/indent at left H, buckles worn, hanger imprints); 1 wool jersey orange, teal, red & black striped dress, orange leather edging, CF snaps, 1965-1972, B 40", W 23"-41", L 44", (unlabeled, 3 light 0.25" stains B, tiny hole right SH) all good-excellent.

Spring Fling - Vintage Visions



20: THREE BONNIE CASHIN GEOMETRIC PATTERNED COATS, 1955-70

USD 300 - 500

1 pink, green & cream wool twill windowpane plaid w/ bias rolled collar, CF belt buckle closure, pearl grey leather edging, label "Sills, A Bonnie Cashin Design", 1960-1964, B 46", L 38.5", (wear to closure); 1 double faced blue, green & lavender bouclé caped vest in chessboard motif w/ olive green suede bindings & 3 brass toggle CF closures, label "Sills, A Bonnie Cashin Design, 1964-1970, B 58", L 37.5", (buckles tarnished, small hole CF W, fabric around closures worn, suede worn); 1 twill wool blanket edged tunic coat in teal, purple & magenta, teal suede bindings, twisted warp tasseled fringe, CF brass toggle closures, 1955-1960, B 50", L 36" w/ 3" braids, (buckles tarnished, pilling, suede worn) all good.



21: THREE BONNIE CASHIN LEATHER OR SUEDE JACKETS, AMERICA

USD 300 - 500

All label "Sills, A Bonnie Cashin Design": 1 pale pink leather jacket w/ long raglan sleeve, CF brass toggle closures & quilted cuff & hem, 1966-1970, B 45", L 17"-25", (indents in leather CB below collar, lining stained); 1 multicolored patchwork leather & suede w/ CF brass toggle closures, 1970-1974, B 40", L 27", (leather worn at SHs, light stains right underarm & front left SH); 1 pink suede w/ high-lo hem, 2 slit pockets at W & CF brass toggle closures, 1966-1970, B 45", L 17"-25", (wear CF collar & pockets, tiny spot stains back), (all w/ oxidizing & scratched buckles) all good-very good.



22: TWO PINK BONNIE CASHIN ENSEMBLES, AMERICA, 1958-1972

USD 300 - 500

1 pink, orange & red mohair blend ensemble c/o long sleeved jacket w/ single patch pocket at B, red ochre suede cuffs & hem w/ snap closure accents, matching knee length skirt & vintage synthetic blouse, 1958-1962, jacket label "Sills, A Bonnie Cashin Design", B 42", W 36"-40", L 23", skirt W 30", L 24.5", blouse B 39", L 23", label "NPC Fashions", (few pulls, suede worn on jkt, metal oxidizing, skirt lining stained, tiny pulls & stains to blouse); 1 pink sleeveless bouclé skirt ensemble, vest w/ hot pink collar & bindings to cuffs & pockets, CF button closures, matching knee length skirt, label "Sills, A Bonnie Cashin Design", 1967-1972, B 42", L 26", skirt W 27", L 25", (leather trim & button holes worn, hanger imprints on skirt) both good.



23: TWO PAJAMAS & ONE REVERSIBLE JACKET, CHINA, MID 20TH C

USD 300 - 500

2-pc patterned silk satin pajamas in architectural & recreational scenes, quilted collar & manipulated silk satin border, soutache frog closure, matching bottoms, label "Moorson, Made in China", B 37.5", W 32", L 26.5", trouser W 41", L 39", inseam 22.5", (1.75" seam opening CF hem, belt missing, spot stains lap); 1 reversible jacket in scarlet & pale celadon patterned silk satin, paired self frog closures, quilted collar, CF opening, pocket, hem & cuffs, B 44.5", L 25.5", (spot stains); 1 peach silk damask set, blouse w/ notched collar, CF self covered buttons, faux H pocket w/ tab, bottoms slit at SS, label "Styled by Tyrone", B 45.5", W 36", L 34.5", pant W 32", L 37.5", inseam 25", (small stains, 3 seam openings, CF W worn) all good.



24: THREE KIMONO ROBE & ONE PAIR PAJAMA PANT, JAPAN & CHINA

USD 300 - 500

1 cream silk kimono style robe w/ tsutsugaki, B 55", L 41.5", (light staining right SH, 2 tiny holes CB, light spot stains); 1 Chinese silk pant w/ auspicious symbols including flowers & butterflies embroidered on green patterned silk ground, W up to 44", L 39.75", inseam 26.5", (6" of light stains left of CB, fraying embroidery, spot stains to seat); 1 black crepe kimono w/ tomato red silk half lining, B 52", L 42", (small light stain right SH blade, lining dirty CB); 1 black silk crepe kimono w/ orange tsutsugaki lining, B 52", L 39", (3 tiny holes CB & 1 to lining, hem lining discolored, 3" seam opening b/t shell & lining CB) all good.



25: TWO KIMONO & TWO HAORI, JAPAN, EARLY-MID 20TH

USD 300 - 500

1 black, CH 54", L 57", excellent; 1 navy silk crepe w/ Yuen resist dye & white & metallic surihaku embroidered flowers, crimson silk lining, CH 50", L 60", (armscye seams opened & repaired, shattering left SH, 1.5" repair left underarm, CB worn, hem shattering) fair; 1 maroon patterned silk w/ orange double resist dyed silk lining, CH 50", L 32", (light stains left B, back of sleeves & right SH blade, 0.75" stain left B, tiny spot stains lining) good; 1 shibori style resisted dyed in white & purple, CH 51", L 39", (spot stains back right SH, fade spot CB) very good.

Spring Fling - Vintage Visions



26: THREE PIECES MANS LOUNGEWEAR, AMERICA, 1930-1940s

USD 300 - 500

1 gold lamé, pink & purple abstract man's smoking robe, satin lapel, pocket & cuff edged in passementerie cord, passementerie cord belt w/ tasseled ends, CH 44", L 35", (1 tassel on belt missing, tassels worn, few tiny spot stains CB); 2-pc man's blue & white woven ombré stripe cotton pajamas, w/ CF button closure & fly, label "Made for the B.V.D. Best Retail Trade B", CH 47", L 27", pant W up to 40.5", L 38", inseam 26.5", (0.25" stain front right SH, 2" & 1.5" areas of staining right CH, tiny spot stains lap, fraying at seat); 1 Art Deco Escher inspired bold geometric lamé brocade man's dressing robe w/ black silk satin collar, covered buttons & cuff, CH 51", L 49", (missing belt, light general wear, cuffs lightly fraying) all good-very good.



27: COTTON DRESSING ROBE, MICHIGAN, 1890-1900

USD 300 - 500

1 treated cotton dressing robe exotic motifs based on carpet designs, lame trim to neckline & over B, brass CF button closure, lined w/ striped cotton mans shirting, stamped "Manufactured by Henderson Ames Co. Kalamazoo, Mich.", B 50", L 55.75", ("EKE" inked inside right SH, pink collar lining shattered, metal tarnished, pulls to trim) very good.



28: WOOL CHALLIS WRAPPER, 1850s

USD 300 - 500

Blue & brown Kashmir inspired stripe challis, self covered CF bone button closure, 2-pc sleeves w/ cuff & SH blue wool insets, 2 patch pockets at CF H, fitted back W band w/ complex box pleats to full slightly trained back, wool rickrack trims, printed cotton lining, wool hem saver, B 37", W 28.5", L 54"-63", (tiny-0.25" moth holes across lap & B, 1.75" tear button band at lap, buttons worn, top button hole torn, rickrack detaching left W 1.25", seam opening left W, collar wear, light stains to B, lining stained & torn) fair. From the Collection of Smith College.



29: TWO TRAINED BOUDOIR GOWNS, 1900-1910

USD 300 - 500

1 pink china silk w/ box & knife pleated pelerine collar w/ braid mm lace edging, 2 satin ribbon rosettes to CF w/ cascading tail & single rosettes to back of open bell sleeves at elbow, B 56.5", L 64.5", (CF rosettes detached, hem stained & dirty, 16" staining left calf & 22" right calf, moth holes) fair; 1 white cotton dimity, draped pelerine collar w/ broad ruffle lace edging, Watteau pleating from back yoke to train w/ wide ruffled hem flounce, B 60", L 69", (few tiny-0.25" holes right side, 2.5" stain at seat) good-very good. The Society for the Preservation of Federal Hill & Fell's Point.



30: TWO COTTON & LACE DRESSING GOWNS, 1880-1890s

USD 300 - 500

1 cotton dressing gown, gathered bateau neckline edged in van dyke pieced & lace trimmed ruffles, leg o' mutton sleeves w/ gathered lace cuffs, lace edged double ruffle hem, c. 1895, B 75", L 55", (missing hook at collar, 1" seam opening left cuff); 1 eyelet & lace dressing gown, pieced cotton diamond panels in princess line front & back, escalier eyelet & lace inset front panel w/ MOP button & loop right front closure, deep ruffled hem w/ eyelet embroidery & lace inserts, B 36", L 52", (broken button loop 4th button from top, 1.5" & 0.5" seam openings front right & 0.5" left side) both excellent.



31: MATCHING BED COVERING & HEAD CLOTH, EARLY 20TH C

USD 300 - 500

1 net bed curtain w/ tape lace insertions, needle fillings & applied leaves & florals w/ cording, 83" x 83.5", (scattered small holes, 1.25" repair); 1 twin sized bed covering for four poster bed w/ inserted tape lace center w/ needle fillings & same applied ribbon leaves, corded tendrils & tape lace floral, 63" x 100", (few small holes at edges, 2.5" section separating from trim at edge) both good.

Spring Fling - Vintage Visions



32: TWO HOUSEHOLD TEXTILES W/ FILET, BOBBIN LACE & CUTWORK

USD 300 - 500

Early 20th C: 1 linen table covering w/ embroidered cutwork, filet center insertion in classical vase & bouquet motif bobbin lace insertions & edging, 86.5" x 92.5", excellent; 1 cotton mull head cloth w/ inserted filet lozenges in floral bouquets & central stemmed vase motifs, embroidered cutwork, bobbin lace insertions & edgings, 106" x 108.5", (pulls to lace) very good-excellent.



33: OUTSTANDING TENERIFE TABLE COVERING, LATE 19-EARLY 20TH

USD 300 - 500

Concentric bands composed of entirely hand drawn thread work w/ needle woven insertions at center panel in tour de force of Tenerife designs, 92" x 109.5", pristine.



34: BED COVERING & MATCHING PILLOW COVERING, EARLY 20TH C

USD 300 - 500

Both net w/ fine cotton mull chainstitch edged appliqué, bobbin lace insertions & edging, most likely French: 1 bed covering w/ central vase & candelabra of cascading floral motifs, 80" x 91.5", (some areas of wear to insert edges & w/ missing chainstitch); 1 matching pillow or bolster cover w/ acanthus leaf scroll, 18" x 79", (1.5" tear at edge of cotton inset near center) both good-very good.



35: PIECED LACE ARCHITECTURAL MOTIF BED COVERING

USD 300 - 500

1 lace insertion tour de force bedspread in architectural geometric motifs entirely pieced of various laces w/ chemical lace medallions, 81" x 113", early 20th C, (scattered tiny-1" holes, numerous seam openings) good.



36: MIXED LACE APPLIQUÉ SHAWL, 1850-1860s

USD 300 - 500

Bobbin, tape & needle lace appliqué w/ tambour dot ground, 72" x 82", (many large areas of mending) good.



37: TWO LONG EMBROIDERED OR APPLIQUÉD SHAWLS, 1830-1840s

USD 300 - 500

Both cream net: 1 symmetrical w/ bobbin lace appliqué in floral motif & floral sprig scalloped edges, 1830s. 23" x 101", (scattered tiny holes, 0.5" tear to edge) good; 1 in chainstitch & running stitch embroidered w/ drawn net work in asymmetrical floral motif w/ herbaceous borders, 1840s, 24" x 98", (repairs, large tear) fair.



38: ANTEBELLUM EMBROIDERED WEDDING VEIL, 1850s

USD 300 - 500

1 shaped veil in cream Tambour, running stitch & drawn net work in Baroque revival & floral motifs, 64.5" x 39", (tiny holes in top of head, probably reshaped at edges) very good.

Spring Fling - Vintage Visions



39: CARRICKMACROSS VEIL, EARLY 20TH C

USD 300 - 500

1 veil w/ headpiece & fish tail train singular construction of assembled lengths w/ Carrickmacross appliqué in scrolled floral & leaf festoons, 64" x 96", (altered, tiny-0.75" holes) good.



40: EXCEPTIONAL REVERSIBLE CANTON SHAWL, LATE 19TH C

USD 300 - 500

1 cream silk canton shawl w/ double sided cream silk embroidery, in rose, floral & stylized boteh motifs, broad border fringe of finely knotted & worked silk, 61.5" x 63" w/ 13" fringe, (scattered spot stains, light 2" stain near center) good.



41: EMBROIDERED CANTON SHAWL, 1920s

USD 300 - 500

Orange silk embroidered peonies, roses & stylized floral motifs on black silk ground canton shawl, wide knotted silk fringe, 51" x 51" w/ 18.5" fringe, (embroidery worn) excellent.



42: MANS EMBROIDERED CASHMERE SHAWL, EARLY 20TH

USD 300 - 500

Cashmere w/ silk hand embroidered florette & frond motifs to central ground in celadon grey, cream & apricot, single border, 50.5" x 98.5", (tiny holes & spot stains esp. near ends, light fraying) good.



43: CHANTILLY LACE SHAWL, 1850s

USD 300 - 500

1 black Chantilly lace triangular shawl w/ classic floral motifs incorporated into Baroque framework, 54" x 106.5", (edges worn, 0.5" hole near 1 corner) very good-excellent.



44: TWO TRIANGULAR CHANTILLY LACE SHAWLS, 1850-1860s

USD 400 - 600

1 triangular Chantilly lace shawl w/ leaves architectural elements w/ floral bouquet centers, 1850s, 105" x 52.5", (lightly fraying edges) excellent; 1 exceedingly fine triangular Chantilly lace shawl w/ cartouche border w/ guilloche motif framework, 1860s, 115" x 52", (lightly fraying edges, 4.5" x 3" area of fading) very good- excellent.



45: TWO APPLIQUÉ OR EMBROIDERED SHAWL CAPES, LATE 19TH C

USD 300 - 500

1 net w/ meandering tendrils in chainstitch, triple ruffle shaped flounce w/ scalloped edge, SH-SH 17", L 25"-39"; 1 net w/ Carrickmacross appliqué & extensive drawn net work fillings, late 19th C, SH-SH 16", L 31", (pulls to net) both very good-excellent.



46: THREE BOBBIN LACE APPLIQUÉ ACCESSORIES, 1840s

USD 300 - 500

1 ecru deep collar w/ bobbin lace appliqué & needlelace fillings & scalloped edge, Wd 8", L 35.5", (tiny spot stains & holes, two 0.25" spot stains near right edge) very good; 1 bobbin & tape lace appliqué on ivory net w/ diapered & floral border & floral center w/ needlelace fillings, 4"-13" x 59", (edges lightly frayed, few tiny holes) very good; 1 two-tiered capelet w/ bobbin lace appliqué on net, Wd 8", L 44", (tiny stains, 0.5" & 1" stains right end, 0.25" hole left top ruffle, 0.75" seam opening at hem) good.

Spring Fling - Vintage Visions



47: THREE DICKIES, 1840-1850s & LATE 19TH C

USD 300 - 500

1 cotton mull w/ Madeira embroidered floral yoke, CB opening w/ single button, late 19th C, SH-SH 18", L 16.5", (tiny-0.25" wear holes around W, 2 tiny spot stains b/t SHs, lace ruffles later addition) very good; 1 cotton mull split front dickie w/scalloped edge & embroidered whitework daisies w/ needlework centers & foliate, 1840s, SH-SH 19", L 16", (0.25" & 0.75" holes back left SH, 0.5" repairs CB W & collar & 5 repairs CF W, 1" tear & repair CB collar, tiny holes) good; 1 net w/ bobbin lace plastron insert continuing into collar w/ MOP buttons at CB, 1850s, L 14.5", (net worn, fraying edges, 1.25" tear at net edge right SH straps) good.



48: FOUR COTTON BODICES W/ LACE TRIMMINGS, 1890-1910

USD 300 - 500

1 finely tucked collar w/ whitework medallion edging, net ruffled engageante cuffs, B 40", L 25", (53" of net ruffle detached, hem cut) very good; 1 surplice style bodice w/ embroidered ribbon insertion bands to SH & W, lace ruffle collar, cuff & hem w/ turquoise ribbon insertion, c. 1895, B 107.5", L 23", (ribbons at B & W missing) excellent; 1 w/ tiered lace yoke, bertha flounce & cuffs, 1890s, B 53", L 19.5", (tiny spot stains, 2" repair back right W & three 0.5" back left W, 0.5" x 0.75" repair bottom button) good; 1 modern blouse w/ MOP buttons, tiered tucks & lace trimmed SH flounce, B 52", L 19", (few tiny holes near CF W) excellent.



49: TWO CAPES & ONE PALETO, 1860s

USD 300 - 500

1 ecru cape w/ woven floral bud ground, collar, CF opening & hem of ruched organdy over glazed cotton trimmed in narrow lace band, c. 1860, SH-SH 17", L 35", (discoloration, tiny-0.25" spot stains) very good; 1 black Chantilly lace paleto w/ shaped sleeve, c. 1865, B 45", L 26", (tiny holes in net) excellent; 1 summer cape of organdy w/ deep ruffle hem, ruched & ruffled trim to collar, CF opening, along ruffle & to decorative hood, 2 thread button closures at CF, 1860-1865, SH-SH 16", L 23.5", (tiny-0.25" spot stains, repairs right neckline) very good. Museum of the City of New York.



50: THREE JACKETS & ONE CAPE, 1860- 1870

USD 300 - 500

1 crocheted wool cape trimmed w/ inlaid black & heather grey patterned band & tassels, c. 1860, SH-SH 19", L 33", (2" repair back right SH, tiny-0.25" holes) good; 1 black jacket w/ white silk floral embroidery, c. 1865, B 35.5", L 19", (lining stained & worn, 0.25" hole left B, 5.25" tear right underarm vent & 2.5" left, pinholes back) good; 1 black silk jacket w/ multi-colored floral satin stitch French knot embroidery, 1865-1870, B 40.5", L 21.5", (lace fraying, 8" SS opening left & 6.5" right, 2.5" trim detach, pin holes, missing CF hook) good; 1 red & black diamond quilted satin paleto trimmed w/ lace & jet beading, 1860s, B 39", L 21.5", (red satin shattering, black trim worn, bead loss) fair; Museum of the City of New York.



51: THREE BLACK SOUTACHE EMBROIDERED JACKETS, 1860s

USD 300 - 500

1 black silk blend jacket w/ soutache in floral & geometric embroidery, scalloped Van Dyke edge to CF, sleeves & back peplum, 1865- 1870, B 40", L 24", (3" tear left armhole & 1.25" wear at left, 2 tiny moth holes right SH blade, embroidery & applied braid fraying) good; 1 vest w/ soutache & stain stitch embroidered leave, florals & fronds, trimmed in cotton bobbin lace, 1860-1870, B 34", L 25", (embroidery & braid loss esp. at CF, 2 tiny spot stains left B, embroidery & braid lightly worn) very good; 1 black silk blend jacket w/ pagoda sleeves, heavy soutache embroidery, trimmed silk lace, c. 1869, B 36.5", L 21.75", (lining damaged, trim detaching 3" right lapel, CF 4.5" & 1" CB collar) very good. Museum of the City of New York.



52: QUILTED SILK SATIN EVENING COAT, c. 1860

USD 500 - 800

Hooded evening coat of seafoam green silk satin w/ stuffed & quilted chainstitch strand of pearl, floral & leaf motifs, attached hood shaped w/ center detached tab & w/ elaborate tassel, dolman sleeve extending from decorative SH panels w/ military cording terminating in double tassel, CF hook & eye closure w/ tassels to either side, cream china silk quilted in geometric squares & bars, c. 1860, B 46", L 37", (4/5 loops at CF broken, tiny-0.25" spot stains, 1" stain left front SH, trim detaching left sleeve, scuffing to CB, missing CF hook, 3.5" seam opening right sleeve) very good. Museum of the City of New York.

Spring Fling - Vintage Visions



53: ELABORATELY EMBROIDERED DOLMAN CAPE, c. 1865

USD 400 - 600

French black velvet dolman style cape w/ embroidered leaves & florals in French knots, chain stitch, bullion stitch, satin stitch & jet beading, applied Chantilly & Maltese lace medallions, passementerie, petit gland edging over Chantilly lace at hem, corded CF paired button w/ jet highlights & looped frog closure, quilted lining, SH-SH 16", L 40", (bead disease on buttons, lining torn, 0.25" stain CF B, interior W cord removed & patched over, padded embroidery worn) good; t/w 1 woman's wool coat of black broadcloth, c. 1870, (missing most buttons). Museum of the City of New York.



54: TWO CREAM & RED WOOL OUTER GARMENTS, 1860-1870s

USD 300 - 500

1 cream wool cape w/ decorative hood lined & trimmed in red China silk & double silk covered & tasseled glands at CB, tie closure at CF neck w/ two smaller silk covered & tasseled glands, c. 1866, SH-SH 20", L 39", (tassels fraying, light stains across front, few tiny scattered holes) very good-excellent; 1 military inspired jacket in red wool w/ double corded trim & edging & overlaid faux jacket of cream wool w/ double corded scalloped edges & grosgrain & silk covered decorative buttons, 1868-1870, B 38", L 25", (buttons missing, wear to collar, snacks across front, 4 tiny-0.5" spot stains to SHs, 5.5" & 3.5" seam openings CB lining) good. Museum of the City of New York.



55: ONE DUSTER & ONE CLOAK, 1865-1867

USD 300 - 500

1 duster of tan textured & treated cotton w/ Peter Pan collar, CF gutta-percha button closure, incorporated dolman sleeve back cape, front H patch pockets w/ 2 decorative buttons, c. 1865, B 56", L 47"-48.5", (staining throughout, wear to buttons) good; 1 black wool & white cotton twill cloak w/ dolman sleeved incorporated capelet edged w/ triple scalloped wool braid, CF self covered wooden buttons, decorative hood lined in silk taffeta, trimmed w/ wool braid & w/ black silk taffeta bow, slightly ruffled broad hem band scalloped at both edges & w/ applied double wool braids, 1865-1867, B 60", L 44"-51", (staining throughout, 2 belt openings sewn shut, wear, 0.25" hole CF by knee) good. Museum of the City of New York.



56: ONE MAISON DIEULAFAIT & THREE UNLABELED CAPELETS. PARIS

USD 300 - 500

1855-1880s: 1 black cisele velvet dolman style jacket w/ brown patterned ground & bud motif, stand collar, CF opening & hem trimmed w/ black chenille & covered corded spheres, label "Maison Dieulafait", SH-SH 17", L 25"-29.5", (W tie detached, slight fringe loss) excellent; 1 handmade fine wool taupe SH cape, SH-SH 16", L 18"-22", (3 tiny holes right CF & 1 right SH, CB trim loose) very good; 1 handmade purple silk taffeta dolman style cape w/ 3 tiered brocaded ribbon ruffles, SH-SH 16", L 22.5"-29", (trim detaching 4.5" right SH, 0.75" & 1" seam openings at left CF, discoloration at CF) very good; 1 purple to green quilted changeante cape, SH-SH 18.5", L 27.5", (shattering & worn edges, fading, 3.5" seam opening left CF, tiny-1" holes in lining) fair.



57: EMILE PINGAT EVENING MANTLE, PARIS, c. 1890

USD 2,000 - 3,000

Cream silk satin dolman style mantle w/ appliques of metallic brocaded green silk velvet outlined & w/ detailing fine silk & metallic cord, dolman sleeves, edged w/ silk chenille netted band & double row of shaped chenille drops terminating in multi-colored silk covered grelot, double row of chenille drops to either side of CF opening, back panel symmetrically pieced brocaded velvet w/ Tudor rose & arabesque motifs, high collar trimmed w/ fine chenille fringe w/ grelot & lace, fully lined in gold silk plush, labeled "Emile Pingat, Paris", SH-SH 15.5", L 39", (chenille trim detached left front hem, missing, worn & detached fringe & beads, lace at back of neck stained & worn, CB collar crudely stabilized) very good.



58: THREE BEADED FRAME BAGS, FRANCE & LONDON, 1890-1920s

USD 300 - 500

1 w/ blue bird at chalice w/ florals & grapes, looped beaded fringe, cast frame, probably German, 1890s, 5.75" x 10.75", (lining shattered & stained, tarnish, bead loss & broken fringe, 1" hole back, detaching from frame, 1 pin on hinge missing); 1 w/ flowers & blue & yellow diamonds on green & black feathered grid, cast silver frame w/ figural Baroque revival scene, stamped w/ lion, lions head, "WC" makers mark & "d" indicating silver, London, 1899, 6.75" x 10.75", (missing chain, bag detaching from frame & most likely later than frame, tarnish); 1 w/ Luneville beadwork in stylized florals w/ sunburst, French, 1920, 7.5" x 8", (unlined, silk of accessories shattering, strap shattered, bead loss, frame tarnish) all good- fair.

Spring Fling - Vintage Visions



59: FOUR MESH BAGS, GERMANY & AMERICA, 1900-1920

USD 300 - 500

1 oval lidded pouch w/ mirror in lid, 6" x 4" x 2.5", (tarnished & worn); 1 w/ black composite inset to frame, stamped "Ger. Silver, Pat. Applied For" & "Mrs. Maude Michael", 6" x 6", (tarnish, small chips, tiny holes near center & at base of bag); 1 w/ hinged crescent opening, flat hammered & shaped fringe, ball snap closure, stamped illegibly & w/ "k h", 4.5"-7" x 10", (tarnish, lots of fringe bent, few missing chain links, handle slightly misshapen); 1 w/ fold over framed top & manipulated mesh medallions w/ long fringe, stamped "Whiting & Davis Co." & "Princess Mary", 4.25"-5.25" x 6.5", (tarnished, 1 broken & twisted loop in handle) all good-very good.



60: TWO WHITING & DAVIS PAINTED MESH BAGS, AMERICA, 1920s

USD 300 - 500

Both w/ painted Impressionist floral motif, silk lining, gilt frames & chain handles, both stamped "Whiting & Davis Co., Mesh Bags, Reg. US": 1 larger w/ round beveled mirror & crenelated tabbed fringe, 6.5" x 8", (lining shattered & stained, mirror damaged); 1 smaller w/ Van Dyke fringe, 4.25" x 6.5", (lining shattered, plating on frame worn at clasp) both good-very good.



61: THREE BEADED FRAMED PURSES, CONTINENTAL, 1880-1915

USD 300 - 500

Two medallion beaded bags w/ spaced & strung beading, looped beaded fringe, silk lining, probably Czechoslovakia: 1 red & crystal shield shaped, 5" x 7", (detaching from frame, tarnish, bead loss near frame) & 1 iridescent blue & amber, 5.5" x 7.75", (bead loss, some chain links warped, tarnish); 1 crocheted w/ iridescent faceted seed beads lined in black leather, frame set w/ multicolored glass cabochons, 1880s, probably German, 4.5" x 10.5", (lining worn, tarnish & oxidization) all good-very good.



62: FIVE EVENING BAGS, PARIS & AMERICA, 1920-1940s

USD 300 - 500

1 faux pearls & prong set rhinestones, 1920s, stamped "E. Gauthier, Paris", 5.25" x 5.75", (lining shattered, frame slightly warped, missing few stones); 1 striped mesh w/ blue cabochon closure & manipulated mesh medallions, stamped "Whiting & Davis Co." & "Soldered Mesh", 4" x 6.25", (broken hinge, missing chain links); 1 navy blue ruched crepe de chine w/ cloisonné medallions at snap closure & finger ring, 1930s, 8" x 5.5" x 2.5", (light lining stains); 1 Persian inspired gold lamé brocade w/ carved carnelian closure, 1940s, 8.5" x 4.5" x 2", (light wear); 1 small w/ Austrian petit point farmhouse & floral motifs, 5"x5", (frame warped, lamé fraying at frame, tiny hole), (all w/ tarnish) all good-excellent.



63: TWO TOOLED LEATHER & TWO ALLIGATOR PURSES, 1914-1940s

USD 300 - 500

1 Art Deco tooled & dyed leather in shades of brown w/ lanyard finishing & stars on metal frame, "NEB" monogram, stamped "Pat. 1-25-21", 7.5" x 7.5" x 1.5", (light wear & scratches, tarnish, 1 broken lace); 1 shield shaped alligator box bag w/ circular closure, label "Bass", 7.75" x 8" x 2.5", (wear, loops & clasp tarnished, handle stiff); 1 alligator box bag, label "Dietsch", 9" x 7.5" x 3.75", (strap broken & torn, wear, lining stained) fair; 1 dark brown w/ tooled leaves & flowers, c. 1914, 6.75" x 7" x 1.5", (leather stiff, worn & scratched, tarnish, lining stained, lacing worn); t/w 1 dark brown w/ stripes, label "Hand Boarded India", 10.5"x7.75", (lining shattered, leather worn & scratched, tarnish, 0.25" hole 1 corner) all very good-fair.



64: FOUR EMBROIDERED SOUVENIR BAGS, 1930-1950s

USD 300 - 500

Three w/ wool embroidery & most likely Mexican: 1 round w/ florals, cotton w/ wool embroidery & multicolored fringe, 1950s, 19.5" x 18.5", (embroidery & fringe worn, tiny-0.5" stains, handle discoloration); 1 green, yellow & blue wool embroidery on cotton w/ wood handle, plywood handle, 1940s, 19" x 11.75", (embroidery worn, handles scratched & worn w/ stains); 1 w/ stylized florals & Toucans embroidered w/ merino wool on linen, wood handle, 1930s, 13.5" x 14.25", (embroidery worn, hinges broken, 2 holes in handle w/ small break, stains to linen); 1 w/ crewel-type chain stitch embroidered florals, flap closure, probably Indian, 12.25" x 10", (clasp chipped, canvas worn & stained, paint on zip chipped, straps tarnished) all good.

Spring Fling - Vintage Visions



65: TWO LLEWELYN BOX BAGS, AMERICA, 1950-1957

USD 300 - 500

1 round pearlescent white box bag w/ inlaid & riveted monogram "JAS", 1950-1957, unlabeled Llewelyn pictured on pg. 17 of 'Plastic Handbags; Sculpture to Wear by Kate E. Dooner', 7.25" x 4.5" x 7", (metal monogram tarnished & scratched, lucite lightly scratched, lining dirty) good; 1 grey marbled stripe w/ large paste rosecut & channel set rhinestones studs & purple & grey striated handles, stamped "NYC Llewelyn Inc.", 1951-1957, most likely 1956, pictured on pg. 10 of 'Plastic Handbags: Sculpture to Wear by Kate E. Dooner', 4.5" x 7" x 5", (rhinestone backings scratched, light scratches) very good.



66: TWO WILARDY BOX BAGS, AMERICA, 1950s

USD 300 - 500

1 butterscotch pearlescent hatbox style w/ single handle & large mirror to lid interior, label "Wilardy", style no. 1429, 1950s, (ghosting on back, light scratches, metal tarnished, mirror edges chipped) good; 1 grey marbled w/ twisted handle & mirror to lid interior, label "Wilardy", style no. 919, c. 1954, featured in "Carry Me" page 88, 5.75" x 6" x 3.75", (light ghosting right back & bottom, light scratches, mirror lightly worn) very good.



67: TWO PEARLESCENT WILARDY BOX BAGS, AMERICA, 1950s

USD 300 - 500

1 white pearlescent oval hatbox style w/ single split & twist handle, unlabeled Wilardy style no. 1473, 1950s, 7" x 11" x 3.5" w/ 5.5" tall handle, (lid warped, metal tarnished, scratches, missing mirror) good; 1 white pearlescent cylinder w/ "Deco Jewels Collection" motif at either end & at closure, split & twist handle, "Wilardy" stamped on hinge, featured in "Carry Me" page 86, 5" x 7" x 5.25" w/ 5.5" tall handle, (discoloration on side panels & clasp, bead loss, light scratches) very good.



68: THREE SHULTZ 9-11 COMMEMORATIVE & PATRIOTIC BROOCHES

USD 300 - 500

3 striped 9-11-01 commemorative pins, label "Shultz" American or French: 1 w/ star & jumpring attached "V", 1.75" x 2.75", 2 w/ jumpring attached red, yellow & marbled stars, 1.75" x 1.625"; 1 red, white & blue beret, stamped "Made in France", 5.75" x 1"-2"; 2 'V' Victory pins, 1 w/ eagle, 1.75" x 2.125", (dirty, metal loops rusting), 1 w/ V in morse code, 1.75" x 2"; 1 red USA pin w/ jumpring attached heart, 2.5" x 2.75", (few divots) all good- excellent.



69: SEVEN LEA STEIN BROOCHES, PARIS

USD 300 - 500

7 stamped "Lea Stein, Paris": 1 red & white pyramidal diamond, 3.5" x 1.25", (light chipping at 2 corners), 2 Potted Flowers: 1 red & cream 1.5" x 2", (red flower scuffed) & 1 red & gold 1.75" x 2", 1 stylized daisy, 1.5" x 2.25", 2 Carmen Joan Crawford, 2.125" x 1.875", (white stains to 1 SH), 1 Carolle Flower Lady, 1.75" x 2.5", (chips to 1 petal); 1 unstamped red & white geometric triangle, 3.25" x 1.25", all good-excellent.



70: PAVONE GALALITH JEWELRY, FRANCE

USD 300 - 500

3 pins label "Pavone": 1 purple ombre cat w/ amber eyes, 2" x 3.75", 1 purple ombre cat playing w/ ball, 2.5" x 2.75", (light chipping at edges), 1 pearlized white rabbit, 2.125" x 3.5", (light scratches); 1 pair marbled green clip-on cat earrings, unlabeled, 1.5" x 2.75"; 1 marbled green cat bracelet, unlabeled, Wd 1.5"-2", circ. 6.75"-10", (light scratches & scuffing) all very good-excellent.



71: SIX PANTTI OR RAFIA & BOSSA BANGLES, AMERICA & PARIS

USD 300 - 500

1970-Modern, 3 w/ matte black ground & brass insert stamped "Rafia & Bossa": 1 w/ translucent green semicircles, circ. 7.75", Wd 1.25", (two 1.5" scratches), 1 w/ translucent teal semicircles, circ. 7.75", Wd 1.25", (1" scratch), 1 w/ matte lilac zig-zag, circ. 7.75", Wd 1.25"; 3 w/ matte yellow or peach ground & signed "Pantti": 1 wide yellow w/ purple dots, circ. 8", Wd 1.5", (patches of sticky residue), 1 orange w/ black semicircles, circ. 7.875", Wd 1", (1" scuff to 1 black dot), 1 yellow w/ black semicircles, circ. 7.75", Wd 1", (several 0.25" scratches to inner rim), (all w/ light scuffing & scratches) all good-excellent.

Spring Fling - Vintage Visions



72: BRUCE PANTTI & VINTAGE BANGLES, AMERICA

USD 300 - 500

4 w/ label "Pantti": 1 two tone navy & lime, circ. 8", Wd 0.875", 1 alternating stripe in lime green & marbled peach, circ. 7.75", Wd 1.5", 1 hot pink & green, circ. 8", Wd 1" & 1 pea green w/ meandering yellow stripe, circ. 8", Wd 1.125"; 5 vintage bangles: 3 slender green, circ. 7.75", Wd 0.25"-0.375", 1 wide red w/ marbled yellow dots, circ. 8", Wd 1.5", (sticker residue on rim), 1 sunflower yellow, circ. 8", Wd 1", (tiny white spot stain cluster), (all w/ some light scuffing & scratches) all very good-excellent.



73: SHULTZ 9-11 COMMEMORATIVE & VINTAGE BANGLES, AMERICA

USD 300 - 500

4 signed "Shultz": three 9-11-01 commemorative bangles, 2 w/ small blue & red dots & 1 w/ blue & red lozenge motif, circ. 7.875", Wd 0.25" & 1 wide mauve & yellow checkerboard w/ red dots, circ. 7.75", Wd 1.25"; 6 vintage bangles: 2 mustard, circ. 7.875", Wd 0.25"-0.375", 1 solid yellow, circ. 7.875", Wd 0.375", 2 yellow scalloped, circ. 7.875", Wd 0.25", 1 square yellow w/ red, white & blue corners, (all w/ some light scuffing/scratches) all excellent.



74: TWELVE PIECE MATCHING ART DECO DRESSER SET, 1930s

USD 300 - 500

Marbleized celluloid dresser set w/ Art Deco petal & lozenge motif: L range, 2"-10.75", Wd range, 0.75"-7": 1 tray w/ inset embroidered net w/ daisy motif between glass, (inner ring warped & cracked, dirty, base shattered and taped together), 2 hairbrushes 1 wide & 1 narrow, (both w/ bent & broken bristles), 1 nail file, (dirty), 1 pair scissors, 1 hair receiver w/ hole in lid, (dirty), 1 accessory box, (dirty), 1 hair/hatpin holder, (dirty, base slightly warped), 1 trimmer w/ long blade, (blade detaching), 1 w/ short blade, 1 nail buffer, (pad lightly worn), (all w/ some scuffing or light scratches, some w/ discoloration &/or w/ oxidizing metal) all fair-good.



75: ASSORTED BOUDOIR ACCESSORIES, GERMANY & ENGLAND, 1930s

USD 300 - 500

3 ceramic pieces w/ lavender to yellow ombre in artichoke design: 2 perfume bottles, printed "Bavaria", 2" x 2" x 5", (contents in bottles) & 1 cosmetic jar w/ lid printed "Germany", 4" x 4" x 4.5"; 6 pieces marbleized butterscotch Bakelite: 1 tray stamped "Velva Pearl", 10.75" x 7" x 0.75", (2 stains); 1 rectangular box w/ design scaling frame to top of lid, 6" x 3.5": 1 brush, stamped "Acwalite", (bent/ broken bristles); 1 nail buffer, stamped "Velva Pearl", 5.5" x 1.25" x 2", (pad dirty); 1 pair scissors stamped "Pyralin Mayflower", 5" x 2.5" x 0.25", (warped, rusty); 1 round accessory box w/ lid, stamped "Made in Halex England", 5" x 5" x 3", (all w/ scratched & dirty) 2 boudoir prints under curved & painted glass in metal frame, 0.5" x 4.25" x 5", (creased) all good-excellent.



76: EIGHT PIECE BRASS DRESSING SET, 1930s

USD 300 - 500

Yellow imitation guilloché enamel & brass toiletry set, L range 3"-13", Wd range 0.375"-5": 1 hairbrush, (bristles bent, broken & missing), 1 file, (plating wearing off, dents to base), 1 small scraping tool, (plating wearing off, blade warped), 1 large hand mirror, (mirror lightly damaged, 1" patch of residue on enamel), 1 small hand mirror w/ ball bearing to swivel, (tiny damage spots to mirror), 1 round frosted glass footed bowl w/ lid, (few dark spot stains, 0.75" patch of residue), (all w/ tarnish to brass & white powder pressed into grooves of tools) all good.



77: THREE GUILLOCHE ENAMEL DESK ACCESSORIES, ENGLAND

USD 300 - 500

1900-1930, 1 desk clock w/ stand, English hallmarks: illegible makers mark, Lion, Anchor & "B", 4.5" x 3.5" x 1", (several small chips to enamel edge, tarnish); 1 bell w/ silver floral framed rim set w/ 3 garnet cabochons, stamped w/ "K" & crown, "84", Omega & "A", Minerva, 2" x 2" x 2.5", (1 tiny chip to base enamel, tarnish, light discoloration); 1 glass pen holder w/ incorporated ink well & guilloché enamel lid, 9" x 2" x 3", (scratches in glass, tape residue on base, tarnish & oxidization) all good- very good.

Spring Fling - Vintage Visions



78: THREE ENAMELED COMPACTS, ENGLAND, 1930s

USD 300 - 500

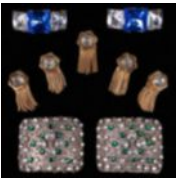
1 square compact w/ purple & white guilloché enamel lid, 2 coin slots & 1 compact, stamped "Sterling", "SM", "22", Lion & "0", 2.5" x 2.75" x 0.5", (small chip to enamel at 1 corner); 1 compact w/ teal enamel lid & chain, 1.75" x 1" x 0.5", ("X" & "D" scratched into inner lid); 1 round double compact w/ pink & black guilloché enamel lid, double sided mirror w/ 1 side for magnification & black corded tassel & handle, 2.125" x 2.125" x 0.625", (applicator worn, tiny chip in metal), (all w/ metal tarnish & light scratching) all good.



79: MAPPIN & WEBB ENAMELED HATPIN & BUTTON SET W/ BOX, 1928

USD 300 - 500

Set of guilloché enameled hatpins & 6 matching buttons in original box, c. 1928, stamped w/ Mappin & Webb makers mark, Anchor, Lion, "n", Crown, pins 10.25" x 1.625", buttons 0.75" x 0.75", (some tarnish) box w/ printed label "Mappin & Webb Ltd. Oxford Street, London W, By Appointment", box 11.75" x 3.75" x 1", (worn, light lining stains) hatpins & buttons excellent, box good.



80: SHOE & DRESS ORNAMENTS, FRANCE, 1920-1930s

USD 300 - 500

Set of 5 paste old mine single cut dress ornaments w/ chain tassels, 0.75" x 1.5", (tarnished, light scratches) excellent; 1 pair of paste 3 stone detachable shoe ornaments, stamped "Made in France", 2.25" x 0.75" x 1", (tarnish, pastes lightly scratched & chipped) very good; 1 pair of gold lamé shoe ornament w/ gold lame embellished w/ faceted gold seed beads, prong set crystal & green faceted paste, 2.5" x 1.75", (light tarnish & oxidation, light wear to backing, 1 slightly flattened) good.



81: ASSORTMENT OF SHOE & DRESS ORNAMENTS, 19TH-EARLY 20TH C

USD 300 - 500

1 pair shoe ornaments w/ pave & channel set amethyst paste stones, stamped "F.N. Co.", 2.5" x 1.5", (1 stone missing, dirty) very good; 1 set of dress clips in buckle motif w/ blue painted accent, 2.25" x 1.25", (paint chipping) good; 3 matching marcasite buttons for mans court frock coat, 1820-1830s, 1" x 1", (1 shank flattened) very good; 1 round Byzantine style silver toned belt buckle, each circle 1.75" diameter, very good; 1 gold tone belt buckle w/ cutout corner motifs, each side 1.75" x 2.5", very good (all w/ light scratches & tarnish/oxidation).



82: TWO SHOE & ONE BELT BUCKLE, PARIS, EARLY 20TH C

USD 300 - 500

1 black velvet & marcasite stylized shaped bow motif shoe buckles, 2.75" x 1.5" x 1.5", (few missing stones, two 0.25" areas of crushed velvet on 1) very good; 1 pieced & carved MOP belt buckle set w/ six pointed star rivets, each side 1.75" x 2.75", (0.25" crack near inner edge, slightly dirty) fair; 1 set of silver tone & paste bead set shoe ornaments in strapped diaper pattern pattern w/ stylized floral in interstices, stamped "Parisienne, 10", very good (all w/ scratching & light tarnish).



83: LARGE LOT OF AFRICAN BEADED JEWELRY

USD 300 - 500

Most lost wax cast brass, some Benin, some Nigerian: 1 set of beads & necklace; 1 w/ metal discs & blue beads, Wd 0.25"-2.75", L 34.5", (blue beads & 1 disc detached & included, 1 disc chipped); 2 thin necklaces of golden beads, Wd 0.125", L 28.75" & 29.75", (light tarnish); 1 set of bone beads, Kenyan, Wd 0.375", L 31", (slightly dirty); 1 w/ small round-ish beads, Wd 0.375", L 10.75"; 1 necklace w/ large round beads, Wd 0.75", L 34.5"; 1 w/ coiled beads, Wd 0.25", L 32.25"; 1 choker w/ shells, Wd 0.625", L 14", (shells yellowing), 1 w/ irregular beads, Wd 0.75", L 19.75", 1 w/ cylindrical metal beads, (most w/ light tarnish & wear & dirty cords) all fair-very good.

Spring Fling - Vintage Visions



84: TWO NATURAL BALTIC AMBER NECKLACES

USD 300 - 500

1 graduated strand w/ yellow amber larger lozenge shaped stones, Wd 05"-1", L 29"; 1 alternating yellow & red amber slightly graduated strand, Wd 05", L 27.25", (light scratches, minor crazing) both very good.



85: TWENTY FIVE JOURNAL DES DEMOISELLES FASHION PLATES

USD 300 - 500

25 'Journal des Demoiselles' plates some hand colored, including 5 accessories plates, Paris, 1863-1868, 8.25" x 11.25" x 0.75", (chipping, foxing, creasing & light staining) as is; t/w 1 torn & 1878 Journal des Demoiselles cover



86: TWENTY JOURNAL DES DEMOISELLES FASHION PLATES, PARIS

USD 300 - 500

20 "Journal des Demoiselles" including 5 accessory plates, 3 color enhanced, 1860-1869, 8.25" x 11.25", (chipping, foxing, light staining, discoloration & creasing at edges of plates) as is; t/w 1892 Journal des Demoiselles cover.



87: TWENTY NINE ASSORTED FASHION PLATES, FRANCE, 1875-1878

USD 300 - 500

29 'Magasin des Demoiselles' or 'Journal des Demoiselles', including 2 bridal, 1 'Coiffures Bourguignonnes' & 4 assorted accessory plates, 1875-1878, 7.75" x 11", (foxing, chipping, light staining & creasing on edges of plates) as is; t/w 1876 Journal des Demoiselles cover.



88: TWO COMPLETE GODEYS LADY'S, AMERICA, 1864 & 1866

USD 300 - 500

1 "Godey's Lady's Book & Magazine", c. 1864, 6.5" x 9.5" x 2.5", (front & back covers detached from spine, cover worn, discoloration, foxing & light creasing to pages) as is; 1 "Godey's Lady's Book & Magazine" c. 1866, 6.25" x 9.5" x 2.5", (spine & covers reinforced w/ masking tape, cover worn & cracked, light discoloration & foxing to pages) as is.



89: TRAGHAGEN SCHOOL OF FASHION STUDENT SAMPLE BOOK, NYC

USD 300 - 500

Traghagen School of Fashion (1923-1991) student practical workbook w/ samplers for various finishing & embroidery techniques, Clothing Department, Dressmaking, belonging to Rita Nurenberg, c. 1962, 11.5" x 13" x 3", (cover worn & detached from ring binding, plastic page protectors worn & cracked) as is condition.

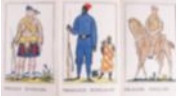


90: PAUL & DENIS POIRET AUCTION CATALOG, PARIS, 2005

USD 300 - 500

Complete 2 part catalog of "La Création en Liberté: Univers de Paul et Denise Poiret, 1905-1928", Personal items of Denise & Paul Poiret, by Drouot-Richelieu on 10th & 11th of May, 2005, including mini cd, Vol. 1, 8.25" x 10.625" x 0.625", Vol. 2, 8.25" x 10.625" x 0.5", (covers lightly scratched, spine of Vol. 1 creased) excellent. From the Collection of Karen Augusta.

Spring Fling - Vintage Visions



91: LES ALLIES BY RAOUL DUFY PUBLISHED BY PAUL IREBE, 1915

USD 500 - 800

Les Allies Petit Panorama des Uniformes by Raoul Dufy, Paul Irebe & Cie, 10 hand-colored pochoirs, leather bound w/ plexiglass cover & slipcase by Daniel-Henri Mercher in allied flag & moto print "Union Jack & Old Glory", stamped "B-H Mercher" 4.5" x 7.5" x 0.625", (light wear to edges of spine) excellent.



92: RAOUL DUFY GAZETTE DU BON TON CROQUIS, PARIS, 1920

USD 300 - 500

'Croquis dé Modes, Soieries de Bianchini-Ferier & Cie, Dessinees par Raoul Dufy, Gazette du Bon Ton No. 1, February 1920", 8 lithograph pochoirs & w/ "Explication des Planches" for each plate including material descriptions for designers including Lanvin, Poiret & Worth, 7.5" x 9.75", (light creasing at edges of plated & folder) very good.



93: L'ORNEMENT DES TISSUE, AUGUSTE DUPONT-AUBERVILLE, 1877

USD 800 - 1,200

1 French copy of "L'Ornement des Tissus" by Dupont & Auberville w/ lithographic plates w/ gold leaf including regional styles from France, Spain, Italy & the Orient, 12" x 15.75" x 2.5", (cover faded w/ spot stains, some pages discolored & w/ pencil markings, foxing) very good.



94: TWO BLACK SILK SATIN DAY DRESSES, EARLY 1920s

USD 300 - 500

1 black silk satin w/ primary color & jet short bugle & seed beads on net in stylized florals & amoebic forms to form front lappet w/ CB V & cuffs, attached bobbin lace collar, B 46", W 45", L 49", (bead disease, collar stained, minor bead loss, underarm pads stained) very good; 1 black silk satin tabard style day dress w/ bands of applied chemical lace to either side of CF in imitation stole from SH to hem & at cuffs, double fold self belt w/ draped side tab, attached needle lace collar, B 43", W 47", L 49.5", (lace collar stained w/ few tiny-0.25" holes, fraying at CF neckline, snaps oxidizing) very good.



95: ONE DAY & ONE TEA DRESS, 1920s

USD 300 - 500

1 cranberry crepe day dress, velvet edged V-neck w/ cascading CF ties terminating in velvet pompoms, smocked SHs, either side of CF & CB, drop W & velvet broad cuffs & hem, 6 silk thread covered buttons w/ small festoon of applied silk cord to either side of both SSs, matching underdress w/ ivory silk gimp bodice & attached wrap skirt, B 50", H 42", L 42.5", (underarm & tiny-0.25" stains & stains to underdress) very good; 1 sleeveless ecru lace tea dress w/ chemical lace net into interlocking circles in highly abstract form, scoop neckline & asymmetrical hem of applied & inlaid ivory crepe chiffon, peach georgette underdress w/ double hem flounce of ivory crepe chiffon, B 41", L 48", (stain cluster lap, underarm stains) very good.



96: TWO BLACK BISHOP SLEEVED DRESSES, 1920s

USD 400 - 600

1 black silk velvet w/ multicolored silk floss floral appliqués to W line & at back of right sleeve, square neckline inset w/ ecru lace panels, long crepe chiffon bishop sleeve smocked at SH & w/ silk velvet cuff, drop W, handkerchief hem, B 36", H 38", L 40.5"-46.5", (embroidery fraying, spot stains, 0.5" stain lap, lining stained & damaged) very good; 1 black crepe chiffon w/ inset mm lace panels asymmetrically inserted at W & falling to hem w/ vertical tucking from left B to W & smocking below left H, black lace panel at neckline & fitted cuff, crepe back satin attached underdress, B 34", H 37", L 45", (snaps oxidizing) excellent.



97: THREE BEADED & SEQUINED PARTY DRESSES, 1920s

USD 300 - 500

1 tabard style black net w/ purple iridescent seed & black bugle beads in pinecone & tendril motif, B 42", H 44", L 48", (0.25"-0.5" holes, hem cut & raw); 1 black net w/ fuchsia sequins & black bugle beads in geometric & floral motifs, B 44", H 43", L 45.5", (shattering around SHs & collar, sequin loss back left SH, bead loss left SS); 1 black georgette w/ short black bugle beads in fig leaves, dashes & w/running scroll at neckline, SS & hem, B 37", H 44", L 41", (tiny-1.25" holes, bead loss, left SH snaps missing or partially detached) all fair. The Society for the Preservation of Federal Hill & Fell's Point.

Spring Fling - Vintage Visions



98: BLACK CREPE & LAMÉ EVENING DRESS, LATE 1920s

USD 300 - 500

Black crepe silk bodice w/ geometric lamé bands woven into B & applied at W, self tie drape at left SH w/ silk velvet band at ends & bullion fringe, attached black silk velvet drop W band, original underdress w/ crepe bodice & black silk velvet for double flounced skirt, B 42", H 41", L 43.5"-46.5", (metal fringe & lamé oxidizing, light underarm stains, 0.5" stain CF B below collar, tiny spot stains) very good.



99: GEORGETTE & GOLD LAMÉ PARTY DRESS, MID 1920s

USD 400 - 600

Black silk georgette evening dress w/ V-neck, short sleeves w/ draped panel from left SH to W, black silk satin w/ silk braid appliqués & jet beading to CF B & entire skirt, underdress of gold lame w/ net yoke embroidered w/ gold lame thread in scrolling floral motif, gored skirt w/ handkerchief hem, B 36.5", H 42", L 42"-46", (collar worn w/ tiny-0.25" holes, beginnings of bead disease, embroidery lightly fraying) very good.



100: YELLOW BEADED PARTY DRESS, 1920s

USD 300 - 500

Buttercream yellow georgette sleeveless party dress w/ lavender silk velvet ribbon insert at V-neck & draped from left SH to right w/ double flat half bow at right SH & right H & falling to above hem, heavily beaded neckline w/ CB garland & triple tiered scalloped hem line, attached underdress w/ double flounce hem, B 34", H 36", L 41", (significant shattering to torso, SH & right underarm, underarm stains, minor bead loss) poor.



101: ART DECO BEAD ENCRUSTED PARTY DRESS, MID 1920s

USD 400 - 600

Ivory cotton mousseline sleeveless party dress encrusted w/ short chatoyant white & gold bugle beads w/ silvered interiors in radiating front motifs to form illusion draped vest bodice & from scalloped hemline, scoop neckline w/ cutout CB panel, B 34", H 31", L 38.5", (taken in at SS w/ all material present, 0.5" drip of wax left SS, minor bead loss, light discoloration at collar & SHs, 0.25" spot stain right B & 0.5" left CF W, 1.5" spot stain at right SS hem, underarm stains) very good.



102: HEAVILY BEADED & ELABORATELY FRINGED PARTY DRESS, 1920s

USD 400 - 600

Lemon yellow silk georgette sleeveless evening dress w/ scoop neckline bodice heavily beaded w/ lemon yellow & lavender iridescent seed beads, gold sugar beads, short gold bugle beads & rhinestones in Near Eastern architectural motifs, drop W w/ skirt covered in short gold bugle beaded overlapping scalloped fringe, mid 1920s, B 41", L 44", (bead & sequin loss, underarm stains, 2" stain seat, tiny-0.25" spot stains across torso) very good.



103: HEAVILY BEADED & SEQUINED EVENING GOWN, c. 1930

USD 300 - 500

Black net heavily embellished w/ black bugle beads, jet rose cuts & black sequins in sunburst motif radiating from left H, beaded & sequined double SH straps diverging at top of SH, slightly flounced hem, synthetic underdress w/ attached silk satin broad hem band, B 35", W 34", L 58", (bead & sequin loss, wear, net fraying around straps & hem) very good. The Society for the Preservation of Federal Hill & Fell's Point.



104: PURPLE SILK VELVET PARTY DRESS, 1930s

USD 300 - 500

Purple silk velvet sleeveless party dress w/ V neckline front & back, smocked SHs w/ cascading tails clasped at CB w/ "V" motif prong & bead set paste dress ornament, shaped drop W w/ smocking to Hs, asymmetrical hemline w/ slit at left SS, original silk crepe slip w/ snap loop at SHs & scalloped hem, B 41", H 37", L 45.5"-54.5", (few tiny spot stains torso, few tiny pulls, hem fraying, buckle oxidizing) very good.

Spring Fling - Vintage Visions



105: RHINESTONE EMBELLISHED EVENING GOWN, 1930s

USD 300 - 500

Black velvet evening gown w/ asymmetrical square front neckline w/ one wide velvet SH strap w/ celestial medallion at back left SH in rhinestones & short crystal bugle beads & one double rhinestone encrusted SH strap to V back, rhinestone & crystal beaded medallion at right SS w/ spray of rhinestones, A-line skirt w/ inserted panel gathered at CB thigh & cascading to slight asymmetrical train, B 44", W 37", L 53"-59", (minor bead & stone loss, seam opening at CB knee, pulling at rhinestone strap) very good. The Society for the Preservation of Federal Hill & Fell's Point.



106: LABELED BLACK SILK & GOLD LAMÉ EVENING GOWN, 1930s

USD 400 - 600

Gold lamé & satin brocaded silk gown in rose, leaf & butterfly motif, round neckline to plunging V-back, blouson bodice lined in crepe chiffon & w/ attached crepe chiffon late Medieval hanging sleeves, slight trumpet skirt w/ inserted panel at CB W to trained petal skirt hem, label "J.L. Dulaney The Washington Baltimore, MD", B 44", W 34.5", L 58"-68", (3.5" tear along seam near seat, light wear, lamé tarnished, chiffon back mostly detaching at right SH, 0.25" seam opening left SH seam) good. The Society for the Preservation of Federal Hill & Fell's Point.



107: CRIMSON & LAMÉ CHEVRON GOWN, 1940s

USD 400 - 600

Round neckline w/ single hook & eye closure at throat & keyhole CF, ruched SHs w/ short petal sleeves, broad cummerbund W band gathered & interlaced at CF & draped at B, chevron pieced full evening length skirt, left SS zip & hook & eye closure, B 34", W 26.5", L 60.5", (stitches pulling slightly back of neck) excellent.



108: TWO EMBROIDERED PIANO SHAWLS, 1920-1930s

USD 300 - 500

1 pale yellow w/ multi-colored embroidery in floral motifs including chrysanthemums & rose & stylized pheasants, elaborately knotted & banded border w/ fringe, 63.25" x 60.75" w/ 17" fringe, (fringe messy, spot stains, tiny-0.5" holes, small pulls to embroidery); 1 seafoam green embroidered w/ grid of oversized pastel chrysanthemums & multi-colored buds & leaves, simple knotted fringe, 52" x 52.5" w/ 17" fringe, (fringe messy, tiny holes, 2.5", 1.75" & 1.5" stains, scattered pulls & spot stains) both good.



109: BLACK SILK & GOLD LAMÉ FRINGED SHAWL, 1920s

USD 300 - 500

Black oval tub silk shawl w/ lamé rose, leaf & bud motif at lower edge, deep ombré black to gold fringe along entire edge, 45.5" x 45.5" w/ 22.5" fringe, (fringe messy) excellent.



110: TWO METALLIC EMBELLISHED SHAWLS, EGYPT & INDIA

USD 300 - 500

1 ivory & silver metallic assuit shawl, 1920s, 36.5" x 95", (metal tarnish, cluster of holes, 1.25" hole near edge) fair; 1 gold lamé & silk brocade Benaras type shawl w/ boteh containing tiger, elephant, gazelle & palm trees, mid 20th C, 22.5" x 71.75" w/ 2.5" fringe, (fringe worn) excellent.



111: TWO EVENING WRAPS, NEW HAVEN, 1910s

USD 300 - 500

1 fine dusty rose pink wool cape w/ pelerine caped collar & attached hood, entirely lined in claret crepe backed silk satin w/ fringed CF elongated tie, interior pocket, SH-SH 22", L 47", (few tiny scattered holes/snacks) very good; 1 black silk satin fur trimmed evening wrap, 2 oversized self-covered buttons at W w/ frog closures 1 decorative & 1 functional, dyed rabbit deep cuffs & broad convertible collar, lined in ivory silk satin, "Hamilton & Co, New Haven", B 50", L 44"-47", (fur shedding, small scuffs) good.

Spring Fling - Vintage Visions



112: REVERSIBLE LAMÉ & SILK VELVET COAT, 1920s

USD 400 - 600

Reversible lamé & black silk velvet evening coat w/ graduated trellis rose, bud & tendril motif, wide draped double sided collar & CF falls w/ tab detail at left B, slender silk velvet cuff, B 46", L 46.5"(pulls to lamé, fading at seat, small areas of crushing) very good. The Society for the Preservation of Federal Hill & Fell's Point.



113: LIBERTY BROCADED & PRINTED CHIFFON SHAWL, LONDON, 1928

USD 300 - 500

1 black brocaded silk chiffon shawl w/ resist dyed motif in multi-color fringed border & feathered bouquets, unlabeled & w/ owner notice on monogrammed notecard: 'Bought at "Liberty" in London, 1928, 40" x 67.5", (light wear to selvedge) excellent; t/w small black triangular embroidered & fringed shawl, Chinese, 18.5" x 48" w/ 7" fringe, (tiny-0.5" light spot stains)



114: LIBERTY WOOL CAPE, LONDON, EARLY 1910s

USD 400 - 600

Seafoam green fine wool circular cape pleated & gathered into neck opening w/ CF single hook & eye, simple hem &, attached satin lined hood w/ double running stitch channel, cording not present, label "Liberty & Co. London & Paris", SH-SH 15", L 36", (4 tiny holes right side, drawstring missing, light fading right side) very good.



115: TWO CHIFFON & SATIN DAY DRESSES, CLEVELAND, 1910s

USD 400 - 600

1 pink satin damask half jumper over crepe chiffon w/ embroidered net collar, CF self-covered decorative buttons on lace base, broad cummerbund belt inserted through back panel w/ CF closure, 3/4 length sleeves w/ 2 tucks & broad embroidered net cuff, B 48", W 36", L 51"-53", (underarm tears, tiny-0.5" holes & stains, hem dirty, 4" area of stains right ankle); 1 grey chiffon over white silk satin w/ ashes of aubergine silk taffeta side gores & over bodice cage in vertical pointed bands fastened w/ flat self covered buttons & symmetrical paired falling bands over skirt, bodice yoke front & back & cuff embroidered w/ vermicelli silk & bugle beads, label "Schuster", B 37", W 26", L 53", (tiny-0.5" spot stains B, SLV, collar & slip, underarm holes) both good



116: LABELED SILK CHIFFON & VOIDED VELVET EVENING GOWN, 1910

USD 400 - 600

Cream silk chiffon w/ voided velvet stripe & broad decorative border in floral & eastern motif, lace trimmed cuff & square neckline w/ asymmetrical needle lace insertions, 2 paneled skirt w/ open at left H to reveal pink silk satin underdress w/ overlay of ecru needle lace & side slit w/ chiffon insertion & lace band, label "Schuster, Cleveland", B 38", W 26", L 59.5"-63.5", (9" dark stripe to lap, 11" stripe CF from hem, 2" spot stain & 4" area of smaller stains to lap, train dirty) good; t/w c. 1912 chiffon & satin grey evening dress



117: ONE DAY DRESS & ONE FANCY DRESS, 1912-1920s

USD 400 - 600

1 purple silk w/ white & black dot print & banded border motif, decorative revers edged in black silk velvet ribbon & w/ self-covered buttons & drops, 2 tiered skirt w/ deeply pointed shaped overskirt & double row of small self covered buttons to CF, c.1912, B 42", W 31", L 57", (holes to lining, underarm stains, silk torn around collar & lapel, 2" tear lap, trim worn, light stains); 1 brown Juliette style gown silk velvet bodice w/ deep silk crepe bertha collar, cuffs, W & hem of faux underskirt w/ gold passementerie, café au lait silk crepe skirt w/ Egyptian ray pleated rosettes inserted at knee level, ribbon rose buds trimmed w/ fur at W, 1920s, B 39", W 31", L 55.5"-60", (collar shattering w/ light stains, 3" tear CB, 1" tear CF) both good.



118: RENAISSANCE STYLE EVENING DRESS, c. 1908

USD 300 - 500

Fawn silk velvet dress w/ deep scalloped bertha collar trimmed w/ gauze & pearl roses, gel sequin & bead embroidery, Renaissance puffed sleeves w/ decorative self-bands & pieced long fitted undersleeves of chemical lace & ruched net, grouped vertical tucking at CF & CB, inserted shaped & flared deep hem w/ faux marcasite buttons, B 45", W 31", L 56.5"-65", (heavy staining left collar, modified W, missing closures, lace sleeves stained w/ shattered lining, lining mostly removed, stains esp. to skirt, 6" hole left underarm) good.

Spring Fling - Vintage Visions



119: LINEN TEA DRESS, c. 1908

USD 300 - 500

Linen & crocheted lace tea dress w/ high stock embroidered net collar w/ crochet yoke & W insertion w/ dimensional florals & leaves, shaped linen bodice w/ embroidered eyelets, decorative cording & bullion bar insertions to either side of graduated tucked panels from SH to W at front & back, elbow length dolman sleeves w/ double band of insertion, eyelets & crocheted edging, elaborate hook & eye back closure, structured neck & W, form fitting skirt shaped w/ let out pleats from W to knee, applied horizontal ruffle at front & around back at knee level, B 34", W 22.5", L 56", (tiny-3" holes in net underlayer, missing hooks & eyes, stains around hem, 1" hole left side, tiny-0.25" spot stains, holes to seat & CB) good.



120: TWO TEA GOWNS, c. 1912

USD 400 - 600

1 Princess lace applique on silk net w/ twill satin underdress w/ slight fish tail train, c. 1912, B 35", W 27.5", L 58"-63", (2" light stain to B, missing closures) very good-excellent; 1 chainstitch embroidered cotton net w/ cream silk satin under dress, chemical lace appliqué insertions, CF ribbon escalier, sleeve & bodice yoke, bell shaped & trained skirt, 35.5", W 25", L 59"-68", (altered w/ some visible stitching, few small stains at back W, 0.25" hole CB above W) very good.



121: LABELED CHINA SILK EVENING GOWN, NEW YORK, c. 1912

USD 400 - 600

1 blush china silk gown w/ square neckline trimmed in mm lace w/ attached imitation gros point de Venise chemical lace bid, short dolman sleeves w/ tucking over SHs, mm lace under sleeve & chemical lace cuff, silk satin cummerbund W sash w/ 3 horizontal faux buckles at CB, attached front & back square panels falling from W for faux overskirt w/ silk satin under-flounce edged w/ chemical lace at CF, trimmed w/ paired self covered buttons at sides, & falling to CB deep V w/ oversized silk satin bow, trained skirt, all over plain cotton underdress w/ CB hook & eye closure, label "Blanche, NY", B 43", W 26.5", L 60"-72", (W band shattered, hem dirty, underarms stained, tiny-0.5" spot stains 0.25"-1" stains to train) very good.



122: ASYMMETRICAL CHIFFON STRIPE & LACE PANEL EVENING GOWN

USD 400 - 600

Goldenrod yellow silk chiffon & satin stripe trained evening gown w/ asymmetrical cross over embroidered net to left side bodice & Baroque inspired gold lame mm lace applied panels to right side, falling over W front & back terminating in Von draped skirt w/ Egyptian inspired square train, label "Schuster, Cleveland", c. 1912, B 37.25", W 26.75", L 60"-70", (1" stain to lap, hem dirty & worn, 4.5" tear right underarm, lamé tarnished, pulls to lace) very good.



123: TWO TEA DRESS & ONE SUMMER COAT, 1908-1925

USD 400 - 600

1 Piña fiber day coat w/ Philippine embroidery in chrysanthemum motif, embroidered asymmetrical revere collar, 2 embroidered side button closures, B 48", L 40.75", (scattered tiny-0.25" spot stains, 1.5" stain lapel, staining at right SLV, tiny- 0.25" wear at neck & SH); 1 handkerchief linen w/ filet crochet insertions & Italian cutwork embroidery w/ needle lace fillings in cream ombre thread, CB hook & eye closure, B 44", W 23", L 57.5", (stains to lap, left H & scattered); 1 Piña fiber tea dress constructed of pre-embroidered Philippine floral motif panels, tunic style w/ self-belt & asymmetrical decorative tie at left side, filet lace collar, CF insertion & cuff, B 48", L 47.25", (light staining at collar, underarms, seat & SHs, spot stains) all good.



124: WHITE OR CREAM LACE YARDAGE, ENGLAND & FRANCE, MID 20TH

USD 300 - 500

Wd range 1.25"-4.75", L range 46"-2,641": 1 white w/ flowers & vines, label "Made in England"; 1 ecru cotton w/ florals, label "Made in England", (2 lengths, tiny holes); 1 two-tiered embroidered net w/ scallops & dots, label "Made in France", (spot stains, uneven cut); 1 bright white w/ florals & dots, label "Made in France", (3 lengths); 1 yellow w/ roses, (2 lengths); 1 w/ 3-leaf clovers, (ends raw), (all w/ minor fraying edges & ends) all good-excellent.

Spring Fling - Vintage Visions



125: BLACK & WHITE LACE YARDAGE, FRANCE & AMERICA, MID 20TH

USD 300 - 500

2 lengths of 3-tiered white lace, label "Made in France", Wd 4.5", total L 45+ yds, (4 lengths, each 401"-413", patches of staining & fraying); 1 cellophane wrapped lace, label "Roth Import Co. Inc.", Wd 8.5", L 10 yds; 1 white floral w/ self fringe edges, Wd 5.75", L 19+ yds, (4 lengths, each 83"-256", 4" section cut from 1 end); 2 matching wide lengths, Wd 13.5", total L 14+ yds, (unevenly cut) all very good- pristine.



126: BLACK MALTESE BOBBIN LACE YARDAGE, LATE 19TH C

USD 300 - 500

All handmade Maltese bobbin lace in various widths & yardage, Wd range 1.5"-11.5", L range 35.75"-474": 1 in sidewinder pattern, (0.5 tear near center); 1 w/ Van Dyke edge, (2 lengths); 1 geometric w/ 6 petal flowers; 1 interlocking triangle & teardrops; 1 wide w/ swags, (0.75" hole near center); (most w/ fraying, raw ends & minor-moderate wear) all fair-very good.



127: MIXED HANDMADE & MACHINE MADE WHITE LACE YARDAGE

USD 300 - 500

Late 19th-mid 20th C: 5 handmade bobbin & tape lace lengths, Wd range 1.25"-13", L range 23.75"-1282.5": 1 net w/ 4 leaf flowers, label "M.E. Feld & Co. New York, Made in France", (3 lengths); 5 loops w/ 1 scalloped edge, (pulls, tiny-0.5" holes); 1 wide white w/ eyelet holes, (all w/ fraying edges); 13 mm lace lengths; all good-excellent.



128: MIXED TAPE, BOBBIN & NEEDLE LACE YARDAGE, 19TH C

USD 400 - 600

17 pieces including Alençon, tape lace appliqué, Wd range 1.5"-14", L range 13.25"-292": 2 lengths appliquéd tape lace on net w/ scalloped floral edges & strip of vine & stems at center, early 20th C, (tiny holes & pulls); 1 square piece of seamed Alençon lace, (tiny-1" holes, edges raw, 2" tear); 1 wide w/ 1 flat & 1 scalloped edge, (holes, 3 seam openings); 1 scalloped tape lace, (1.5" hole, small pulls), (most w/ raw edges) fair-very good.



129: APPLIQUÉ OR EMBROIDERED NET YARDAGE, c. 1900

USD 300 - 500

6 pcs, Wd range 4.75"-12", L range 142"-302": 1 tape lace appliqué on net w/ vines & 3-sprig leaves, Wd 8", L 302", (discoloration, cut in 2, tiny spot stains); 1 tape lace appliqué net w/ vines & bows, Wd 11", L 206.5", (edging torn, seam separations, tiny-0.5" holes); 1 yellow embroidered net w/ abstract florals & paisleys, Wd 10.25", L 292", (discoloration/stains, 4 lengths, small holes & repairs); 1 white Chantilly w/ dense florals, Wd 8.5", L 142"; 1 bobbin appliqué on net lace w/ florals & scalloped edge, Wd 4.75", L 150.75", (discoloration/stains, small holes); 1 Carrickmacross skirt trim loop, circ. 164", (tiny spot stains, broken brides), (all w/ raw edges) fair-very good.



130: FOUR LACE FLOUNCES, EARLY 20TH C

USD 300 - 400

1 furnishing flounce w/ butterflies, florals & grape motifs in needlelace w/ heavy thread buttons & baubles on macrame edge, Wd 15.5", circ. 63", (tiny-0.5" spot stains, 0.5" tear top edge, pulls); 1 tiered & ruffled skirt flounce w/ ribbon appliqué on heavy net, Wd 13", circ. 86", (top hem partially undone, ribbon shattering); 1 white deep flounce w/ large floral, frond & undulating scalloped edge in chain stitch on net, Wd 20", circ. 131", (tiny spot stains & small repairs, pulls); 1 unusually sophisticated multi-type ecru tape lace flounce, Wd 22", circ. 105", (tiny-0.5" spot stains, 1.25" section of edge detached) all good- very good.

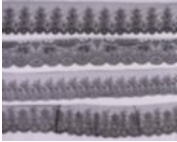


131: TWO LARGE LENGTHS NEEDLE LACE APPLIQUÉ YARDAGE, 19TH C

USD 400 - 600

1 w/ embroidered dots, Wd 17"-18.5", L 6+ yds, (ends raw, 4.5"x5.5" area cut left end, 3 repairs, tiny-1" holes & seam openings); 1 needle lace appliqué & w/ needle lace fillings, Wd 20", L 4+ yds, (6.5"x1.75" area cut left edge, ends raw, 3.5" & 2" holes top seam, tiny-0.75" holes, light stains) both good-very good.

Spring Fling - Vintage Visions



132: FOUR LENGTHS BLACK CHANTILLY LACE YARDAGE, 1860s

USD 400 - 600

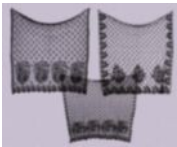
1 w/ 3 tulip clusters, Wd 10"-11.25", L 171", (ends raw, small holes, several small tears top edge, light fraying); 1 w/ florals, vines, & dots, Wd 11.25"-12.75", L 102.5", (small holes, 1" tear top edge); 1 w/ diamond edging, Wd 11.25", L 203", (many small holes, trim left edge removed for 3.5", 51" tear top edge, 22" section above tear missing, right end worn & w/ large holes); 1 wide w/ several seams, Wd 124", L 11.5", (tiny-0.5" holes, light fraying) all fair-very good.



133: TWO EMBROIDERED BONNET VEILS, 1820-1830s

USD 400 - 600

1 needle running embroidered w/ carnations & undulating band of florals & foliate topped w/ tropical foliage at lower edge & tiny floral grid, original ribbon insertion at top edge, 1820-1830s, 29.75" x 38.5", (1 tiny spot stain & 2 tiny holes top right corner); 1 needle running embroidered w/ stylized aster scalloped edge w/ forget-me-not leaf spot motif & large floral bouquets at decorative lower edge, 45" x 39.25", (very minor fraying at edges) both excellent.



134: THREE BLACK EMBROIDERED BONNET VEILS, 1820-1840s

USD 400 - 600

All needle lace running: 1 w/ dense flower rosettes at scalloped edge w/ needle lace trims, diagonal floral grid center, 51.5" x 52.5", (edges fraying, lots of tiny-0.5" holes, 0.75" & 2" holes, top edge worn) good; 1 w/ floral at scalloped edge w/ leaves & buds in heavy needle running, 46" x 42", (tiny holes, few tiny pulls to edges) very good; 1 w/ sunflower motif at scalloped edge, dense triple floret & multi-lobed leaf spot motif to center, 53" x 51.5", (binding detaching, tiny-small holes throughout, worn/tears at ends) fair.



135: ASSORTMENT OF RIBBONS & TRIMS, FRANCE, 1890-1920

USD 300 - 500

1 floating warp ikat field of flowers in lavender, royal blue & gold, Wd 7", L 97.75", (ends unfinished, scattered tiny pulls); 1 ribbed taffeta rose motif & shadow floral chine on cream & yellow ground, Wd 9.75", L 123.5", (ends raw, tiny pulls & pinholes esp. near end, 1" spot stain near 1 end); assorted ribbons, Wd range 5.5"-9", L range 12.5"-71.5": including 1 blue ombre, 1 black brocade w/ bright floral clusters & grey satin damask w/ woven floral motifs for use in folk dress, many made in France, all fair-very good.



136: ASSORTMENT OF RIBBONS & TRIMS, 1890-1930

USD 300 - 500

2 lengths w/ warp & weft brocade in imitation of embroidery w/ rose motif on pressed moire ivory silk ground, Wd 5.5", L 46.25" & Wd 7.5", L 84.5" (scattered spot stains, pin holes, edges raw); 1 double faced ribbed silk crepe baleen boned sash, Wd 5"-7", L 106", (light spot staining, scattered tiny pulls, ends raw, bones partially detached); assorted wide ribbons Wd range 5.75"-10.75", L range 46.5"-84"; assorted narrow ribbons many w/ museum deaccession tags, Wd range 0.5"-4.5", L range 8.75"-220.25", all fair-very good.



137: LOT OF FLORAL CHINE LENGTHS & RIBBONS, LATE 19TH C

USD 300 - 500

Eight pcs, most floral chine or checkerboard satin & rep: Wd range 7"-9", L range 96.5"-134": 1 cream, purple, magenta & turquoise canvas, (3 lengths, total L 9+ yds, discoloration & spot stains, ends raw, 1 pc. Seamed together unevenly); 1 red check of long thin rectangles, (ends raw, tiny-0.25" holes, 1" hole & tear each end); 1 wide floral on cream field, (fraying, spot stains & pinholes) all good-very good.



138: SETS OF PRE-EMBROIDERED SILK PANELS FOR ROBE OR KIMONO

USD 300 - 500

Early-mid 20th C: 1 set of silk satin dragon embroidered robe material w/ complete narrow shawl, Wd 10"-47", L 54.5"-124.5"; 1 winter kimono padded w/ flannel lining, CH 58", L 47", SLVs, 15"-28", (1.5", 2.75" & 1" stain to right CH, closures removed & included) (both unpicked & w/ raw edges, scattered tiny-small stains) both as is condition.

Spring Fling - Vintage Visions



139: TWO LADIES JACKETS, CHINA, EARLY 20TH C

USD 400 - 600

Both silk satin w/ silk thread & gold embroidery: 1 navy jacket, CH 49", L 28", (hem worn & frayed, stains around hem, missing 1 button) very good; 1 light blue & black w/ lilac cuffs, CH 44.5", L 31.5", (stains, wear to cuffs, missing buttons) good.



140: TWO EMBROIDERED LADIES ROBES, CHINA, EARLY 20TH C

USD 400 - 600

1 deep navy silk satin embroidered in multicolor silk w/ gold tone galloon trim, CH 47", L 42", (missing top ball closure, shattering at collar, ribbon trim, sleeve creases, spot stains CH, 4.25" seam opening right cuff & 10.75" left cuff, lining faded) good-fair; 1 black silk crepe embroidered in multicolored silk satin, CH 50", L 41.5", (lining at SHs & cuffs shattered, light embroidery wear, 3 tiny spot stains left front underarm) very good.



141: ONE ROBE & ONE PAIRED MANDARIN SKIRT, CHINA, EARLY 20TH

USD 400 - 600

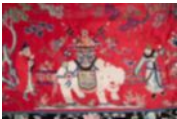
1 patterned silk damask, CH 56", L 38", (loop closure at collar torn, left SS opened, 4.5" stain front left SH & 5" front right SH, spot stains, 2.5" shattering CF below collar, seam openings to trim collar & SHs) fair; 1 café au lait silk satin paired Mandarin skirt, unpleated, W 46", L 39", (trim worn, fading, light spot stains, 2.5" stain, tiny holes & shattering above hem) good.



142: DRAGON ROBE & PAIRED MANDARIN SKIRTS, CHINA, 19TH C

USD 400 - 600

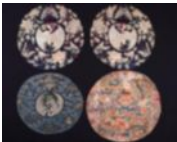
1 paired Mandarin skirt w/ metallic embroidered & finely panels on red patterned silk ground, embroidered floated ribbons, Wd 42.5", L 38", (dirty & stained, scattered tiny-2.5" holes & tears, most trim partially detached) fair; 1 eight dragon robe embroidered w/ auspicious symbols satin stitch & Peking knot silk floss & metallic embroider on brown silk taffeta ground, CH 52", L 52", (all knots for closures missing, worn w/ large areas of shattering, unlined) fair-poor. The Society for the Preservation of Federal Hill & Fell's Point.



143: TWO LARGE EMBROIDERED BED HANGINGS, CHINA, LATE 19TH C

USD 300 - 500

1 embroidered possessional scene w/ white elephant, tigers, figures & auspicious symbols on red silk satin ground, 34" x 162.75" w/ 7.5" fringe, (fading, light embroidery wear, cotton backing stained, tiny-0.25" stains) very good; 1 embroidered w/ florals & birds w/ brass bezel set mirror work, 25" x 116" w/ 9.5" fringe, (fringe messy & faded, wear, broken & missing mirrors, 0.5" hole top right corner, cotton backing & edging stained, 1" seam opening b/t body & top edge) good.



144: FOUR CIRCULAR EMBROIDERED MEDALLION, CHINA

USD 300 - 500

Late 19th-early 20th C: 2 w/ cranes, butterflies & florals, 11" x 10.75", (left looking crane backing separated for 3" 2.75" & 1", both w/ stained backing & 0.5" stain from sticker on back); 1 peach embroidered w/ satin stitch & Peking knot, 13.25" x 12.75", (dirty backing, 4", 3.5" & 2.75" seam openings, stamps that have bled on backing); 1 navy embroidered w/ cranes & clouds in counted thread gauze embroidery, 11.25" x 10.5", (0.75" sticker on back, light edge wear) all good-very good.



145: CHILD'S MOCCASINS & BEADED KNIFE SHEATH, LAKOTA SIOUX

USD 300 - 500

Late 19th-early 20th C: 1 pair deerskin child's moccasins w/ squaw stitch embroidered bead work w/ sinew construction, Lakota (Western Sioux) c. 1900, Wd 2", L 4.5", Ht 2", (worn, suede dirty) excellent; 1 knife sheath sinew stitched w/ faceted beaded decorative edge, 1.5" x 8.75", (worn & dirty, minor bead loss near point, ties torn at ends, two 0.25" cuts in leather below top edge) very good.

Spring Fling - Vintage Visions



146: THREE HANDKERCHIEFS & ONE CHAMBA RUMAL, 19TH C & 1949

USD 300 - 500

1 cotton printed handkerchief w/ map & military regional crests of Italy, turkey red border, 1884, 22.25" x 25.5", (light stains, two 0.5", 1", 0.75" spot stains); 1 Chamba Rumal embroidered panel w/ silk embroidery on cotton in traditional Indian motifs, backed w/ diagonally printed cotton, 19th C, 28.25" x 37.5", (worn & missing embroidery, many tiny-0.75" holes & wear spots, stains/discoloration); 1 "Straight Arrow" cotton bandana, 1949 National Biscuit Co. 18.75" x 18", (stains, tiny hole to center & edges); 1 Indian block printed silk elephant & reindeer parade border w/ 1840s style signature quilt stamp "Jamie Carpenter", 1840s, 35" x 28", (2 stamps w/ name, light stains, small pulls) all good-very good



147: SIX COPTIC FRAGMENTS, 5TH-7TH C

USD 400 - 600

All tapestry woven wool & linen in various techniques & with natural dyes, probably from tunics: 1 w/ faces & animal on white backing, fragment 7.25"x3.5", w/ backing 9.5"x5.5", (worn, dirty, holes, 1.5" area weave missing); 1 mustard & brown w/ canines & swirls, 4"x1.75", (white stitches from museum label); 1 tan & black w/ geometric patterns, 10"x3.5", (stains, 1 hole); 1 red square w/ black floral center, 4"x4.5", (binding b/t panels partly missing, 2 holes, stains); 1 red & brown stripes, 2.25"x6.75", (patches of missing weave, 1" hole); 1 red & tan w/ round center, 8.25"x5.5", (very worn, lots of weave missing, stained), (most w/ worn & frayed edges) poor- excellent.



148: EMBROIDERED FURNISHING BORDER FRAGMENT, ITALY OR SPAIN,

USD 400 - 600

Silk embroidered furnishing border fragment in blue & cream silk double running stitch & stain stitch linen w/ blue & cream silk woven passementerie, from The Florence Colgate Speranza Collection, mounted on silk, 19.5" x 37.5" w/ backing, (discoloration, tiny-0.75" spot stains, raw edges where fragments missing) very good.



149: LATE BAROQUE EMBROIDERED FURNISHING SILK FRAGMENTS,

USD 300 - 500

Furnishing & possible sleeve of statue robe textile w/ unfinished floral silk embroidery w/ metallic strip & thread work w/ metallic sequins embroidered through linen backing, Italy, probably c. 1710, 8.25" x 15.5" & 8.25" x 16.5", (embroidery unfinished & worn, stains at edges from tape, discoloration & stains, edges worn, shattering) fair.



150: TWO SILK & METALLIC THREAD EMBROIDERED PANELS, 18TH C

USD 400 - 600

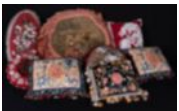
Both vase arrangement motifs including pansies, carnations & roses in silk stain stitch on silk ground w/ linen backing, vases rendered w/ gold thread in diaper pattern w/ silk French knots: 1 w/ pink flower & bud, c. 1800, 11.25" x 8", (0.5" hole left of vase, edges worn & stained, fading, tiny-0.25" holes, patches of shattering); 1 w/ larger pink flower, 11" x 8", (edges worn & stained, 3" tear bottom right corner, fading, tiny holes & areas of shattering in field, spot stains) good-fair.



151: IMPERIAL COURT BROCADE FROM ARMAND HAMMER GALLERY,

USD 400 - 600

Russian imperial brocade ornament d'eglise woven w/ gold & silver thread for Imperial Court, w/ tag from Russian Imperial Exhibit at Halle Bros. & Co., 1932, from The Armand Hammer Gallery, w/ exhibition catalog, original certificates of authenticity, correspondence & bill of sale, 24.5" x 20.5", (edges folded, cut & fraying, 12" x 12" area of fading, brocade worn along 1 side & w/ fold lines) good.



152: EIGHT BEADED OR EMBROIDERED DECORATIVE PILLOWS,

USD 400 - 600

Pair Chinese blue & peach w/ red baubles & carved Jadeite rooster fringe, 11.5"x11.5"x4.5", (roosters chipped, 1 missing head, 2" tear to 1 front); 1 round red w/ faux pearl grape clusters, 1870s, 12"x12"x3", (damaged pearls, 2.5" stain); 1 black satin w/ multicolor tassels & embroidery, 10"x12"x3.5", (few missing tassels, light wear); 1 silver faille w/ multicolor & grisaille beaded florals, 1870s, 23.5"x13"x5.5", ; 1 round grisaille beaded & silk canvas work w/ red tassels, 1860s, 15"x15"x2.5"; 1 red w/ white & crystal beading in perched bird motif, 17"x13"x5"; 1 velvet octagonal w/ silk chenille & floss embroidery, 1840s, 23"x23"x9", label "Nicole Myrtille, Paris" (tiny holes) (most w/ missing/ loose beads) all good- excellent.

Spring Fling - Vintage Visions



153: TWO WOOL RUGS, UZBEKISTAN, EARLY- MID 20TH C

USD 300 - 500

1 Caucasian kilim w/ all natural dyes, 38" x 69", (worn, several 1"-6" areas missing weft at 1 end, dirty, faded) fair; 1 knotted wool rug, 1920-1940s, 32.5" x 44.5", (worn, fringe very worn, dirty, fraying at edges, light fading) good.



154: THREE WOOL RUGS, TURKMENISTAN, 1950-1970s

USD 300 - 500

All in brocade woven geometric band motifs w/ natural dyes: 2 matching rugs, 1970s, 20" x 23.5" & 20" x 24.5", (worn, fraying edges, fringe discolored & cut unevenly); 1 runner, 24" x 119", (wear, fringe very worn, dirty & stained, fraying edges) all good.



155: EXCEPTIONAL EMBROIDERED KASHMIRI SHAWL, INDIA,

USD 500 - 800

Entirely hand embroidered cashmere fleece tilikar in framed border & of wide variety of colors, motifs of finest workmanship, 86" x 81", Provenance: ?Order of Capt. Derek, to cover his ship's bed on voyages from India to the Carolina?s", (self fringe worn, tiny-0.25" holes & spot stains) excellent.



156: SUMMER WINTER WOVEN COVERLET, AMERICA, 1825

USD 300 - 500

1 navy & cream woven bedspread, 76" x 91", (very worn, tiny-8" holes & repairs, discoloration & stains) fair. Provenance: Woven by Sophronia Morey for her daughter Sarah on her wedding day, June 23rd, 1825, repaired by Birdie, granddaughter of Sarah, December, 1928; t/w pillowcase, 38" x 45.25"



157: ONE SILK & ONE COTTON QUILT, EARLY 1920s

USD 300 - 500

1 blue & white silk pieced quilt in orange peel design, 1920s, 69.25" x 75.5", excellent; 1 appliquéd quilt of cotton in variation of devil's puzzle design, c. 1922, 62" x 82", (faded, very worn, light discoloration & spot stains, 1" hole to backing) good. From a Southern Institution.



158: TWILL WOVEN WOOL BLANKET, 1851

USD 300 - 500

Wool blanket w/ embroidered medallions at 2 corners, 2 loom widths w/ bordered, embroidered "May the 15 18.51", 71" x 68.25", (stains & discoloration, embroidery worn, tiny-8" holes & repairs throughout) fair. From a Southern Institution.



159: FRIENDSHIP QUILT, BRISTOL/WALPOLE, 1846

USD 400 - 600

1 'Old Italian Block' friendship quilt, presented by The Ladies of Bristol, A.D. 1846, for Mrs. Ann P. Gould, w/ individual name stamps & dedication, 87.5" x 80.5", (stains & discoloration) very good; 1 pale blue quilt w/ white 8 point stars, 78.25" x 84", (very faded, stains & discoloration, worn & fraying esp. at edges) fair.

Spring Fling - Vintage Visions



160: APPLIQUÉ QUILT W/ GARLAND OF FRUIT & ROSES, NEW

USD 300 - 500

Appliqué quilt w/ rose, cherry & grape motif & signature patch reading "R.A. No. 5", 1850s, 83" x 81.5", (mildew, stains & discoloration, appliqués worn, most grape fabric discolored/worn, tears to backing) fair.



161: APPLIQUÉ TULIP & ROSE QUILT, NEW ENGLAND, 1850s

USD 300 - 500

Appliqué quilt w/ tulip & rose floral wreath motif, 1850s, 74" x 74.5", (mildew, stains & discoloration, light wear, tiny tears & holes to backing) fair.



162: STUFFED & CORDED WHITEWORK QUILTED BEDCOVER, EARLY 19TH

USD 400 - 600

Stuffed & corded whitework quilted bedcover, 100" x 100", (1.5", 1" & 0.5" spot stains near center, 0.25" burn hole right edge, small stains left side) very good- excellent.



163: THREE BOYS ENSEMBLES, c. 1900

USD 300 - 500

1 cream china silk ensemble c/o jacket & trousers, CH 30", L 21.5", trouser W 24", L 15.5", inseam 6", (belt missing, spot stains across back, few pinholes right sleeve, hanger marks to pant, messy lining seams above cuffs, hole left ankle lining, 0.75" hole & pulls to seat) good; 1 cream faille ensemble c/o jacket & trousers, jckt CH 26", L 16", trouser W 24", L 16", inseam 7.5", (jacket trim fraying, SH discoloration, tiny spot stains, hanger marks to pant, tiny pulls) very good; 1 pair linen trousers, W 25.5", L 12.5", inseam 4.75", (fraying at buttonholes, 1" seam opening right CB W) excellent; 1 cotton dress shirt, CH 27", L 10.5", (tiny spot stains to CH & SH) excellent.



164: CHILDREN'S COTTON GARMENTS, 1860-1900

USD 300 - 500

1 cotton blue & white striped pinafore dress w/ Heileman embroidery, CH 26", L 22.5", (light spot stains across torso & lap, light fading); 1 cotton pink & white striped cape w/ pelerine trimmed chemical lace, SH-SH 12", L 13"-17", (fraying around lace inserts, collar discoloration, few tiny spot stains); 1 cotton white tunic w/ red & white floral trim, CH 27", W 20", L 16", (tiny light spot stains, light wear to collar & hem); 2-pc boy's white cotton pique ensemble c/o jacket & trousers, CH 26", L 13", trouser W 21.5", L 15.5", inseam 7.5", (missing closure CF collar, tiny pulls & spot stains, stains to seat) all very good.



165: THREE SETS OF TWINS DRESSES, 1920s

USD 300 - 500

2 identical pink cotton organdy dresses, CH 57.5", L 33", (1 w/ 1" seam opening right side, 2 tears upper right & left side, both w/ spot stains, fading & discoloration) both good; 2 identical pale blue linen dresses, CH 41", L 27.5", (1 w/ 2 stains to CH, both w/ fading/dyeing, embroidery pulls, missing belts & spot stains) both good; 2 identical green silk crepe de chine silk dresses, CH 36", L 37", (1 w/ underarm stains, 1 missing 1/2 of back tie, 1.5" hole right underarm, shattering at cuff & SHs, both w/ spot stains/dyeing) both fair-good.



166: LIBERTY & CO TWINS DRESSES, LONDON, 1920s

USD 400 - 600

2 identical seafoam linen girl's dresses, CH 40", L 33", (1 w/ light discoloration right CH, missing bottom 2 buttons, spot stains to SH blades, 1 w/ spot stains to hem in back & right SS); 2 identical tangerine silk pongee dresses w/ matching bloomers, label "Liberty & Co. Regent St. London", CH 46", L 34", (1 w/ 1.5" seam detach left pocket, 2 stains lap & spot stains seat, minor pilling, 1 w/ large stains CF CH, metal oxidizing), bloomers W 23.5", L 22" & W 21.5", L 22", both inseam 9.75", (both w/ elastic dry, pilling & tiny pulls, scattered spot stains) all fair-good.

Spring Fling - Vintage Visions



167: TWO BROWN WOOL IRENE SKIRT SUITS, AMERICA, 1948-1952

USD 400 - 600

1 worsted wool twill suit in cream & brown w/ notched collar, turn back cuff, pocket detail & H band in plain brown wool, self covered CF buttons, label "Irene!", 1948-1952, B 38", W 29", L 26", skirt W 26", L 31", (collar worn, 1 tiny hole back right & left SH blades); 1 cocoa brown suit w/ 3 mahogany & fruit wood domed & lacquered plywood buttons, horizontal notched collar, extended bound button holes in military inspired CF, glove length sleeves, weighted peplum, label "Irene, Exclusively for Bullocks-Wilshire", c. 1952, B 39", W 29", L 24", skirt W 25", L 28", (1 partially detached hook & eye on skirt) both excellent.



168: TWO IRENE TAILORED SKIRT SUITS, AMERICA, EARLY 1950s

USD 400 - 600

1 black silk surah skirt suit w/ fitted long sleeved jacket, Peter Pan collar, CF self-covered button closures & shaped tabs to Hs, lined in aquamarine silk crepe, matching calf-length skirt w/ faux vent at CB, label "Irene, Exclusively for Gunther Jaeckel New York", c. 1954, B 38", W 26", L 26", skirt W 25", L 29.5"; 1 cream & black houndstooth wool skirt suit, long sleeved jacket w/ fold-over pointed tabbed collar extending to CF panels w/ button closure terminating in pointed W tabs, matching skirt w/ same inset pointed tab panel to CF, label "Irene, Exclusively for Neiman Marcus Dallas? 1952-1955, B 38", W 30", L 24.5", skirt W 25", L 30", (light stains at collar) both excellent.



169: TWO IRENE WOOL SKIRT SUITS, AMERICA, 1947-1954

USD 400 - 600

1 mottled burnt orange & black twill wool blend skirt suit, sculpted long sleeve jacket w/ shawl collar, self-covered CF button closure, H tabs, deep flared turn-back cuff, faux wrap calf length skirt, c. 1947, label "Irene, Exclusively for Bullocks-Wilshire", B 40.5", L 28.5", skirt W 25.5", L 31", (holes left pocket, right & left SH & left skirt H, 1 hook torn out of W); 1 ivory wool skirt suit w/ blanket striped border to jacket & skirt hem & w/ single stripe to B & back, notched collar, turn-back cuffs, CF button closure, original tag incl., style #6229, label "Irene, Exclusively for Maison Blanche, New Orleans", 1950-1954, B 39", L 32", L 25.5", skirt W 26", L 27.75", (0.25" holes CF, left H & right B, light stains, buttons worn) both very good.



170: BONNIE CASHIN FOUR PIECE ENSEMBLE, AMERICA, 1958-1962

USD 400 - 600

3 pcs cream wool boucle: 1 poncho coat w/ standing band trimmed w/ white leather to extended CF ties, CF opening, hem, SS slits & cuffs trimmed in white leather, B 60", L 37", (pilling, leather trim worn) very good; 1 jacket w/ free front, notched shawl collar, slash pockets all edged in white leather, B 44", L 23" & matching straight skirt, W 26", L 26.5", both excellent; 1 cream knit shell w/ boat neck & sleeve cuffs w/ white leather edgings, label "A Bonnie Cashin Design, Sills & Co.", B 40", W 31", L 18.5", (leather trim worn on blouse) very good



171: THREE BROWN BONNIE CASHIN COATS, AMERICA, 1953-1962

USD 400 - 600

1 brown confetti striped wool tweed coat w/ attached hood, CF safety buckle closures, large applied square pockets w/ slash openings, brown leather binding throughout, label "A Bonnie Cashin Design, Sills & Co.", 1955-1960, B 47", L 32.5", (leather buckle straps & trim worn, buckles tarnished) good; 1 brown & olive boucle houndstooth chasuble style cape w/ dark grey leather bindings & covered button closures to CF & at SSs, 1955-1962, B 42", L 32", (unlabeled, fabric around buckles worn) very good; 1 tan long sleeved paneled leather coat, label "A Bonnie Cashin Design, Sills & Co.", 1953-1957, B 44", L 40", (spot stains lap & SHs, 0.75" crack right SH, label re-sewn) good.



172: FOUR BONNIE CASHIN SEPARATES, AMERICA, 1958-1970

USD 400 - 600

1 wool jacket in red, blue, tan, black & olive green in Peruvian inspired geometric pattern, fitchet pockets, CF toggle closures, all edges bound in brown leather, 1965-1970, B 37", L 22.5", (light wear) excellent; 1 pair olive green suede pegged pants, label "Sills, A Bonnie Cashin Design", 1955-1960, W 25, L 38", inseam 28.5", (missing W button, suede worn at W) very good; 1 multicolored mohair boucle T-shaped jacket edged in crimson leather w/ sweater guard closure, 1958-1965, B 52", L 26.5", excellent; 1 pair turmeric leather trousers w/ cross over closure, label "Sills, A Bonnie Cashin Design", 1965-1970, W 28.5", L 36", inseam 26", (buckles worn, leather edge worn, spot stains & indents) very good.

Spring Fling - Vintage Visions



173: TWO BONNIE CASHIN BLACK LEATHER ENSEMBLES, AMERICA,

USD 400 - 600

Both label "A Bonnie Cashin Design, Sills & Co.": 1 skirt set: jacket w/ wool faced shawl collar & cuff in cream, black & green, elastic W, short flared peplum & matching skirt w/ CF pearlized snap closures, 1952-1957, label "Maison Mendessolle, San Francisco", B 43", W 24"-35", L 22", skirt W 24", L 25", (1" & 0.25" wear spots right cuff, label detaching, wear to W band & seat, smokey); 1 pant set: jacket w/ black ribbed knit shawl collar, oversized H pockets to faux belt H tabs & stovepipe trousers w/2 front slit pockets & inset SS panel to buckle CB, 1952-1957, B 42", W 36", L 25", pant W 26", L 41.25", inseam 29.5", (tag detaching, two 0.25" light marks CF W & 2? at SH blade, buckle at CB W worn, scuff left knee, smokey) all good- very good.



174: THREE BONNIE CASHIN OVERCOATS, AMERICA, 1960-1965

USD 400 - 600

1 charcoal wool twill w/ notched shawl collar, black leather bindings to collar, cuffs, CF opening & hem, semi-circular SS pockets, CF leather buckle closure, 1960-1965, label "A Bonnie Cashin Design, Sills & Co.", B 47-49", L 42.75", SH-SH 19", (leatherstrap for buckle worn, 0.75" blue stain CB, 0.25" snack right SH blade); 1 double faced oatmeal wool coat w/ draped caplet collar, brass tie tack CF closure, tie belt & bindings in cream leather, oversized SS pockets, 1960-1966, label "Sills, A BonnieCashin Design", B 48", L 44", SH-SH 18.5", (pin oxidizing w/ small transfer at left CF, seam openings belt); 1 tan corduroy w/ CF button closure, 1970, label "Sills, A Bonnie Cashin Design", B 36", L 43.5", SH-SH 18", (light stains right CF W) all good.



175: TWO INTERCHANGEABLE BONNIE CASHIN BLUE & GREEN

USD 400 - 600

Both coats labeled "A Bonnie Cashin Design, Sills & Co.": 2-pc c/o hooded mohair plaid coat in shades of green, yellow & red w/ green suede bindings & CF brass clip closure & green cashmere sweater w/ overlapping collar & brass button closures, sweater label "Made in Scotland Expressly for I. Magnin & Co. by Ballantyne, Designed by Bonnie Cashin", coat B 56", L 36", sweater B 38", W 31.5", L 23", (hole right SH & coatsleeve & light wear to suede, 0.25" CF stain on sweater); 2-pc c/o blue & green woolboucle oversized plaid coat w/ ring collar, suede bindings & CF tie closure & teal wool dress w/ suede bindings & snap closures, B 56", L 39", dress B 40", L 43.5", (dress unlabeled, dress seam opening left armscye, tiny-0.25" stains) very good-good.



176: DIOR WOOL COAT, NEW YORK, 1960s

USD 400 - 600

1 kelly green wool coat w/ asymmetrical roll collar to left side closure w/ 3 oversized button closures & decorative white top stitching, label "Christian Dior, NY", B 41", W 40", L 40.5", (button surfaces crazing, 2 light spot stains front right SH, lining worn around armscye & collar & w/ 3" seam opening at left armscye, wool stained around bottom 2 buttons) very good.



177: BLACK VELVET CORDUROY EVENING GOWN, 1947-1948

USD 500 - 800

Black ribbed silk velvet corduroy evening gown w/ broad graduated SH straps to V at CB w/ sequined & embroidered dimensional appliqué, draped bodice gathered to left B & fanning out over left SH w/ patterned gelatin sequined, rhinestone & patterned & plain metallic strip embroidered appliqué, full circle skirt w/ scrolling sequined & metallic appliqué to left front, CB zip closure, B 35", W 28", L 57"-62", (areas of crushing esp. 7" at CB, metallic trim worn & partially missing in some patches) excellent.



178: EMILIO SCHUBERTH EMBROIDERED SILK SATIN EVENING GOWN,

USD 7,000 - 9,000

Cream silk satin strapless gown w/ fold over draped neckline, fitted bodice, bell shaped skirt w/ draped panel from right W back left SH terminating in oversized self-bow w/ single snap, embroidered w/ cascading corsage of pink florals highlightedw/ metallic bullion & fountain spray of satin stitch, metallic threads & rows of graduated rhinestones, label ?Emilio Schuberth, Roma?, B 33", W 30", L 55", (hem dirty, SS let out, scuffs, stains esp at underarms & drape, 1.75" seam opening at W, minor bead loss) fair. Exhibited at Teatro Manuel, Valletta, Malta, 19-27th of November, 2000 & Mueso del Tessile e dell-Abbigliamento, Naples, July-October, 2004. Featured in Moda Italiana, 1950-1970, by Sofia Gnoli, page 30.

Spring Fling - Vintage Visions



179: VALENTINO FOR TWA FLIGHT ATTENDANT ENSEMBLES, AMERICA,

USD 400 - 600

All in brown chevron knit & w/ "V" logo gold tone buttons: 1 belted dress, B 37.5", W 28", L 39.5", (label removed from collar, light spot stain CF W); 1 ensemble c/o tan poly/cotton blend shirt & brown jacket, jckt B 38", L 21", shirt B 38", L 31.75", (jckt buttons worn, 3" seam openings each corner, light blue stain stop left SH blade, 2 "B"s inked in shirt label, pull right pocket); 1 brown coat, label "Valentino", B 37", L 31.5", (buttons worn, label removed, 2 "B"s inked on label); 1 brown poly/cotton blend overshirt, label "Valentino", B 36", L 32.5", (2 "B"s inked onto label, buttons worn, 1" seam opening right pocket, belt missing, spot stains) all good-very good.



180: VALENTINO FOR TWA FLIGHT ATTENDANT SEPARATES, AMERICA,

USD 400 - 600

1 cream coat chevron knit & w/ "V" logo gold tone buttons, label "Valentino", B 39.5", W 31.5", L 40.5", (small pulls, buttons worn, left pocket button missing, spot stains left sleeve, 0.25" spot stain inside right lapel); 2 cotton blend belted tops w/ "V" logo buttons, label "Valentino", B 38", L 33", (label partially detached, tiny pulls upper right B), B 38", L 31.5", (buttons lightly worn, 2 "B"s inked onto label, missing bottom button, spot stains, torn button hole) all good- very good.



181: STAN HERMAN FOR TWA FLIGHT ATTENDANT ENSEMBLES,

USD 300 - 500

1 red-orange ensemble c/o jacket, skirt & V-neck knit top, jckt B 37", L 27", top label "Fashionaire, A Division of Art Schaffer & Marx", B 30"-42", L 25.5", skirt label "Stan Herman for TWA by Fashionaire", W 26.5", L 20.75", (jckt button stained & missing bottom button, "ML" inked into top & skirt label, spot stains to top B); 1 TWA bodysuit, label "Youthcraft/Charmfit Designer Collection by Stan Herman", B 40", W 36", L 30", (pilling & wear to groin, stain B, 1" seam opening & fraying at collar); 2 blue aprons, label "Stan Herman for TWA by Fashionaire", 1 W 28"-32", L 37", 1 W 19"-53.5", L 37", (both w/ "Bunny Stock" inked into label & spot stains to B & lap) all good- very good.



182: SET OF TWA PAPER DRESSES, AMERICA, 1968

USD 400 - 600

2 Olde English Wench, both grey waffle paper wrap dress w/ white ruffled tissue collar & short sleeves, light aqua & green stripe belt: 1 dark grey paper dress, label "A Paper Fashion by Eli Daggs", B 42", L 36.75"; 1 light grey paper dress, B 39", L 37.5"; 1 French Maid gold paper metallic mini dress w/ standing ruffle collar & slender self-belt, label "A Throw Away Fashion by Eli Daggs", B 39", L 40", (all creased & wrinkled from storage) all pristine.



183: FOUR PAIR SLACKS & BLUE JEANS, AMERICA, 1950s

USD 300 - 500

1 pair cotton bright blue, 1950s, label "White Stag", W 23.5", L 39.75", inseam 27.75", (stains at knees, pocket & lap, left H button missing, buttonholes worn); 1 pair dark wash w/ snap pockets, label "Levi's, Authentic Denim Western Wear", W 31.25", L 44.75", inseam 32.25", (zipper broken, 0.75" hole right knee); 1 pair w/ zipper on right H, "Bilt Rite" stamped on button, W 25.5", L 41.25", inseam 29.5", (worn, spot stains esp. to legs, 0.5" tear where zipper & W band meet); 1 pair w/ H button closure, W 29.5", L 40.75", inseam 28", (worn, spot stains, 2 holes left H, 3.5" tear left ankle inseam) all fair- good.



184: FOUR PAIR BLUE JEANS OR DUNGAREES, AMERICA, 1950s

USD 300 - 500

1 pair unworn dark wash men's dungarees w/ red top stitching, tag "Double-A Double Wear", W 36", L 42.75", inseam 31", pristine; 1 pair unworn men's jeans, label "Wrangler", W 33", L 43.25", inseam 32.75" pristine; 1 pair w/ pink top stitching w/ "Bilt Well" stamped on button, W 34.5", L 42", inseam 30", (worn, 1.25" stain to seat & scattered small stains, holes back right calf & right knee) good; 1 pair paint stained jeans, label "Carter's Watch the Wear, Lebanon, NH", W 38.5", L 41", inseam 29", (very stained, hole right knee, pocket removed) fair.

Spring Fling - Vintage Visions



185: THREE MANS SEPARATES, AMERICA, 1903 & EARLY 20TH C

USD 400 - 600

1 double breasted wool top coat w/ satin lapel, lined in silk rep w/ sleeve lining of striped silk twill, label ?May 11th, 1903? & "Jas H. Cogswell & Co. Cleveland O.", CH 42", L 41.5", excellent; 1 wool smoking jacket w/ silk satin lapel & double button at cuff, label "The Arthur M. Rosenberg Co. New York, New Haven", CH 48", L 30.5", (wear to underarms) very good- excellent; 1 black wool flannelsingle breasted waistcoat,"Jas H. Cogswell & Co. Cleveland O." & "W.B. McAllister Eng.", CH 43", L 19.5"-24.5", (stains & discoloration to lining) very good.



186: THREE MANS WAISTCOATS, CLEVELAND OHIO, 1910-1920s

USD 300 - 500

1 patterned silk waistcoat w/ faux lapel & removable jet buttons, 1910s, label "Kamerer & Benes, Cleveland O." & "N.B. McAllister", CH 42", L 19.5"-25", (2" tear in lining seam right side) excellent; 1 diaper patterned silk waistcoat w/ faux lapel & dyed MOP buttons, lined in silk twill CH 43", L 20.5"-24", (light underarm wear, 2.5" repaired tear left underarm, 9" gore added at CB seam) very good; 1 white cotton pique waistcoat, label "Kamerer & Benes, Cleveland O." & "N.B" McAllister" , CH 41", L 19.5"-23.5", (tiny spot stains) very good.



187: MANS LINEN FROCK COAT, 1840s

USD 400 - 600

White linen frock coat w/ toggle front closure & MOP buttons, carved MOP buttons to seam of frock skirt, back vents w/ pockets, CH 41", L 33.5", (staining around collar & upper right arm, 1" & 1.5" stains right of CF, 3 holes right of CF) good.



188: MANS LINEN TROUSERS, 1840s

USD 500 - 800

Linen trousers w/ shaped trousers legs, bone button fly front & suspender buttons at W band, adjustable buckled W tabs at CB, SS pockets & right front watch pocket in W seam, stamped ?W L Foster? at W band & inside pocket, W 29", L 41"-43", inseam 29.5", (missing innermost W band closure, light discoloration & spot staining) very good.



189: MANS FINE WOOL BROADCLOTH CUTAWAY TAILCOAT, 1840-1850s

USD 500 - 800

1 cutaway mans tailcoat in fine black wool broadcloth w/ cross over 2 button functional closure w/ additional decorative buttons & lapel button holes, button covered in black basket woven silk, lining w/ tailored quilting at tails, torso & collar, double tail pockets, ?W L Foster? ink on interior CB bar, CH 40", L 18.5"-36", (spots of shattering in lining, very light stain right sleeve, 0.25" moth hole back collar) very good.



190: TWO MANS SPORTING BREECHES, 1910-1925

USD 400 - 600

1 pair black & white wool tattersall check jodhpurs w/ button fly, diagonal piped pockets & watch pocket, suede leather inseam & seat panels, button cuffs w/ wool flannel boot insert, W 29.5", L 35"-42", inseam 27", (tiny-0.25" holes & stains) good; 1 pair linen mans plus four golfing breeches w/ MOP & bone button fly, W 33", L 34", inseam 24.5", (light stains to lap & left H, missing buck at ankle closures, "W97" inked in W band) very good.



191: LABELED LODEN WOOL FOUR PIECE MANS SUIT, PARIS, 1956

USD 400 - 600

4-pc blue-green wool suit c/p single breasted coat w/ 3 cast glass button, notched lapel, lined in changeante silk taffeta, double front pleated cuffed slacks w/ button fly, knickerbockers w/ button fly & elastic cuff, label ?July 1956? & ?Rouff Frères, 5 Rue Lamennais, Paris? ?M. de Compiègne", CH 50", L 33.5", vest CH 44", L 21"-25.5", trouser W 34", L 44", inseam 31", breeches W 35", L 31.75", inseam 19.5", (pulls to stitches at jacket lining, tiny hole CHpocket, lining & back of vest stained, light hanger imprints on trousers, elastic at breeches cuff, spot stains, ?M. de Compiègne" inked below inner W band) all very good- excellent.

Spring Fling - Vintage Visions



192: MANS THREE PIECE WOOL & SILK SUIT, NEW YORK CITY, 1930

USD 500 - 800

3-pc black wool & brown silk fine woven check pattern suit c/o 2 button single breasted peaked lapel jacket, 4 pocket vest w/ CF button closure, straight front cuffed trousers w/ brace buttons & back buckle adjusting strap, label "Gray & Lampell, NYC? & ?5-1-30?, CH 38", L 27", vest CH 35", L 18.5"-22.5", trouser W 31", L 36.5", inseam 27.5", (2 tiny holes CB jacket & 1 snack at seat) excellent.



193: THREE PIECE GIRL SCOUTS UNIFORM, AMERICA, 1923

USD 400 - 600

1 Blue Bell Troop cotton twill girl scout uniform c/o belted jacket w/ 6 merit badges on right cuff, all brass ?GS? buttons & skirt, 1914-1928 original style, B 46", L 28.5", skirt W 39", L 27.5", (missing slip top, worn & pilling, buttons oxidizing, some mold present, stains, 1.75" fraying tear at hem right back); 1 girl scout gimp topped skirt, B 43", W 44", L 48.5", (prominent stains throughout, wear & pilling, armscyes both cut & edges left raw, dark stains left hem, 2" hole left SS W) all fair. The Society for the Preservation of Federal Hill & Fell's Point.



194: TWO PIECE GIRL SCOUT UNIFORM, AMERICA, 1923

USD 400 - 600

2-pc Blue Bell Troop cotton twill girl scout uniform c/o jacket w/ 7 merit badges & all brass ?GS? buttons, front & back buttoning convertible bifurcated skirt, 1914-1928 original style, B 50", L 30.5", skirt W 23", L 35", (1.75" hole under right lapel worn & pilling, dirty, mold patches on back near jacket hem, buttons oxidizing, holes, hem wear, tiny stains, 6 point star missing left pocket, skirt missing 1 CF button, mold, stains & tiny holes) all fair. The Society for the Preservation of Federal Hill & Fell's Point.



195: TWO GANTNER WOOL BATHING SUITS, SAN FRANCISCO,

USD 300 - 500

1 navy wool bathing suit w/ yellow V-neck, stripe at B & arm straps, Van Dyke attached skirt over integrated shorts, label "Gantner & Mattern Co. Manufacturers, San Francisco", (repairs to left back, right B & left underarm, tiny-0.5" holes & spot stains) fair; 1 midnight navy w/ modesty skirt & integrated shorts, label "Gantner Swim Suits, July 4, 1922, Pure Virgin Wool, San Francisco", B 32", W 27", L 31.5", (4 small holes B, cluster right side & 0.25" back left SH) good.



196: TWO LABELED WOOL BATHING SUITS, CALIFORNIA, 1920-1930s

USD 300 - 500

1 green w/ black & yellow striped modesty skirt & integrated shorts, label "Gotham Knitwear", B 36", W 31", L 32.25", (tiny-1" holes, repairs to CB collar, right & left W, right & CF B) fair; 1 aquamarine blue waffle pattern w/ shaped fitted B & W, modesty skirt & integrated shorts, label "Jantzen E. Gottschalk & Co. Fresno", B 32", W 24", L 29.5", (pale 1" & 0.25" stains to B, 0.25" hole seat, 3 holes to lap & 1 in torso, 1 cord cut) fair- good.



197: TWO LABELED WOOL BATHING SUITS, AMERICA, 1920s

USD 300 - 500

1 heathered grey suit w/ modesty skirt & integrated shorts, striped cotton belt in cream, red & grey, label "Bradley Knitwear", B 44", W 40.5", L 35.5", (end of belt fraying, 0.25" hole below CF W & 0.5" hole to seat); 1 black w/ cream striped detail at hem of skirt & integrated shorts, label "Gantner & Mattern Co. San Francisco", B 37", W 31", L 33", (0.75" hole back right thigh, 0.25" hole inner left thigh, light wear) both good.

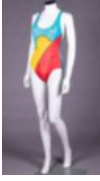


198: TWO MANS CUTOUT WOOL BATHING SUITS, LOS ANGELES, 1930s

USD 300 - 500

1 red worsted wool w/ broad cutout oval at SS W, short modesty skirt & integrated shorts, label "Sun-Knit Broadway Knitting Mills, LA", B 26", W 24", L 32", (both straps shortened w/ a few stitches, 1.75" repair right B, 0.25" moth back right H); 1 green w/ strapped oval W cutouts, cream striped band to hem of modesty skirt & integrated shorts, B 26", W 23", L 28", (scattered holes, tiny white paint stains at W & lap, 0.75" repair right H) both good.

Spring Fling - Vintage Visions



199: PETER MAX POP ART BATHING SUIT, AMERICA, 1980s

USD 300 - 500

One piece bathing suit w/ yellow cloud & red color block on aquamarine ground, label "Via Max Objects d'art, Peter Max", B 28", W 22.5", L 26", (fading, scattered tiny spot stains back & seat) very good.



200: ONE SILK & ONE STRAW LADIES HATS, c. 1860

USD 300 - 500

1 Balmoral plaid silk velvet hat w/ CF rosette, rolled brim, sectional bias plaid bands to single self-covered button over cream ribbed silk, late 1850s, circ. 19", Ht 4.5", size 6, (spot stains to cream fabric at crown, velvet worn around brim, lining mostly shattered & detached) good; 1 dyed straw hat, 1860s, circ. 17.25", Ht 3.5", (edges of brim chipped, lining unfinished w/ holes & spot stains) very good.



201: TWO LADIES BRIMMED & EMBELLISHED HATS, MASSACHUSETTS,

USD 300 - 500

1 straw & horsehair garden hat w/ extended brim & pleated straw CB detail, patterned ribbed silk ribbon, cloth florals & tendrils, 11.5" x 10.5", depth 2", (tiny holes & spot stains to ribbon, covering of wire at brim worn, lining shattered & lightly stained) very good, Provenance: Grace Adele Sheldon; 1 wide brimmed black velvet hat w/ gathered corded detail around crown, ostrich feathers & pink & green pressed velvet leaves, label "Marcil, Holyoke Mass.", 12.5" x 11", depth 4.5", circ. 23", size 7.25, (velvet worn esp at brim, label & feathers worn, lining torn, crown crumpled) good.



202: FIVE HOLLYWOOD FILM STYLE LADIES HATS, AMERICA,

USD 300 - 500

1 black fur felt shaped casque w/ veiling & coque feathers, circ. 21.75", Ht 4.5", size 6 7/8, (holes in net, feathers worn); 1 caramel colored fur felt w/ Tamborine brim w/ tapered sugarloaf crown, brown decorative veiling, label "Helen Liebert, New York", 1940s, 12"x10.5", depth 4", (snacks, slightly misshapen); 1 spun straw w/ pink triple tulle shaped under-brim & pink silk satin ribbon to bow at CF, circ. 21.25", Ht 5.5", size 6.75, (ribbon wear, internal band shattering); 1 brown fur felt, label "The May Company, Wilshire", 1939-1942, 9"x7.5", depth 4", (holes in net); 1 dusty blue ladies Homburg, label "Barbara Lee Reg. US Pat. Off. Classic", 1940s, circ. 22.5", Ht 4", size 7 1/8, (tiny snacks warped, internal band worn) all good- very good.



203: SIX ASSORTED DESIGNER HATS, AMERICA, 1920-1940s

USD 300 - 500

1 looped velvet ribbon hat, label "Hattie Carnegie Inc.", circ. 23.25", size 7 3/8, (band shattering, velvet worn, holes); 1 brown felt w/ braided & varnished raffia ribbon, circ. 21", size 6 5/8, (dirty, holes in crown); 1 red straw braid doll hat w/ cloth florals, veiling & red velvet ribbon, 1939-1942, 9.5"x9", (chipping, tears in net); 1 cream felt cloche w/ inserted faux braid, label "Wethers Paris, Boston, NY", 1920s, circ. 22.5", size 7 1/8, (snacks, lining detaching); 1 plum woven straw w/ conical crown, grosgrain ribbon & cellophane peppers & cinquefoils, label "Blum's-Vogue Chicago", 1930s, circ. 16.75", (glue on internal band); 1 navy horsehair beret w/ velvet ribbon, label "Lilly Dache", circ. 20", size 6.25, (frays) all good- very good.



204: FOUR SCHIAPARELLI HATS, PARIS, 1950-1960s

USD 300 - 500

1 treated raffia & horsehair in undulating wave design w/ inserted teal velvet flat bows, label "Schiaparelli, Paris", circ. 22.25", Ht 5", Wd 9.5", size 7, (slightly squished); 1 black velour peach basket hat w/ horsehair & black silk satin ribbons, label, "Schiaparelli, Paris", circ. 21", Ht 5.5", size 6 5/8, (feathers broken & messy); 1 plum silk brimmed pillbox encrusted w/ cloth Lily of the Valley, circ. 20.75", Ht 2.5", size 6.5, (lining worn & dirty); 1 of interlacing red & midnight navy straw bands to form slightly flared cloche, label "Schiaparelli", circ. 21.25", Ht 4.5", size 6.75, (few broken bits of straw at crown) all very good- excellent.

Spring Fling - Vintage Visions



205: FIVE NOVELTY LADIES HAT, 1930-1960s

USD 300 - 500

1 modified milkmaid hat of woven chip w/ fishnet filet & attached rings, label "Made in Italy", circ. 21.75", size 6 7/8, (cord broken, 1 break at crown & brim); 1 mushroom hat w/ looped synthetic raffia over monofilament filet over net over navy coiled straw base, label "Made in Italy for Marshall Field & Co." & "Vogue Special Designs", circ. 20.25", size 6 3/8, (raffia at brim worn); 1 gold varnished straw covered w/ yellow marabou feathers w/ chiffon tails, circ. 21.75", size 6 7/8, (bow fraying, tiny stains, varnish chipped); 1 cream felt nautical themed cap w/ spiral looped CF medallion, circ. 22", size 7, (dirty); 1 striped cruise cap w/ painted grommets, label "Made in Japan", circ. 21", size 6 5/8, (light stains & fraying) all good-very good.



206: SIX TRADITIONAL REGIONAL MANS HATS, EARLY-MID 20TH C

USD 300 - 500

1 Moroccan black velvet w/ embroidered lining, circ. 21.5", Ht 3.25", size 6.75, (tiny crushed areas, internal band creased, misshapen); 1 black velveteen Order of Malta beret, circ. 22.25", Ht 3", size 7, (appliqué partially detached); 1 green leather w/ laced leather decoration, North African, circ. 18.75", Ht 2.75", size 5 7/8, (fading 1 side, crumpled, tassels stiff & torn short); 1 white mens cap w/ pastel embroidery, circ. 21.25", Ht 3.5", size 6.75, (slightly dirty, tiny spot stains); 1 black silk traditional Chinese, circ. 20.5", Ht 5", size 6.5, (silk band shattering, light stains & lining worn); 1 black satin, label "Francis Hat Shoppe, 1545 Broadway NYC", circ. 21.75", Ht 3.5", size 6 7/8, (tiny pulls, holes in lining) all fair-very good.



207: FOUR MANS DECORATIVE CAPS, BALKAN & OTTOMAN, LATE

USD 400 - 600

1 red silk satin hat w/ sequins & beads. Large silk tassel, circ. 21.75", Ht 5.5", size 6 7/8, (tassel messy & discolored, stained, metal cording tarnished, lining discolored); 1 blue velvet w/ bullion embroidery & metallic tassel, circ. 22.75", Ht 3.5", size 7.25, (metal tarnished, velvet worn, embroidery worn & missing in spots, lining shattered); 1 blue broadcloth w/ painted felt & soutache appliqué & tassel, circ. 22.5", Ht 5", size 7 1/8, (missing & detaching appliqués, holes, tassels messy, lining shattered); 1 blue velvet w/ bullion & silver sequin embroidery, circ. 19.5", Ht 2.25", size 6 1/8, (velvet worn, metal tarnish, slightly misshapen) all fair-good.



208: FIVE UNUSUAL BONED FOUNDATION GARMENTS, 1890-1920

USD 300 - 500

1 plain white corset w/ glass button toggle CF closure, c. 1900, label "M.W. 73", B 33", W 27", H 33.75", L 9.75-12.26", (laces N/I, stains front, no front attachment); 1 boned corset w/ wrap cinch closure, clover lace at top edge, c. 1908, B 32", W 22.5", H 34.5", L 15.25-18.5", (straps & canvas worn, holes, light stains); 1 wrap cinch closure w/ diamond pattern lace, c. 1908, label "Sahlin Perfect Form & Corset Combined Patented", B max 40", W max 32", H max 44.5", L 12"-16", (straps fraying, bones at Bdetached, stains); 1 bustle pad w/ reed boning, c. 1890, W max 29.5", pad 12.25" x 13.25", (1 bone missing, W band frayed), 1 boned 1920s chest flattener, label "Fairy", B 34.5", Wd 3.75-6.75", (oxidizing, stains, 0.5" tear left CB) all fair-good.



209: FOUR CORSETS, 1880-1890

USD 300 - 500

1 ecrú w/ lace trim on top edge, original lacings, 1880s, W 21.25", Ht 8.5-11.25", (CF tears exposing busk, bones wearing through); 1 white w/ boned side panels & narrow lace trim, 1900-1905, W 25.5", Ht 6.5-10.5", (trim fraying); 1 ecrú w/ original lacings & lace band at top & bottom edge, 1880s, label "Trade I.S. Mark-Style Empire Straight Front", W 19.5", Ht 6.75-11", (green stains on laces & fabric, lace trim detaching); 1 black w/ yellow woven trim & flossing, 1890s, B 29.75", W 19.5", H 29.5", Ht 12.5-15", (laces N/I, wear holes, 1 side stained, exposed bones, 1 missing grommet), (all w/ oxidizing metal fixtures & stains) all poor-fair.



210: FOUR CORSETS, FRANCE & AMERICA, 1880-1910s

USD 400 - 600

All w/ original laces included: 1 cream silk satin w/ lace at top edge, original silk lacings, c. 1890, label "CB a La Spirite", B 31.75", W 20.5", H 32", Ht 11.5-14.75", (laces worn, gores removed or open); 1 tan striped twill cotton w/ robins egg bluesilk embroidery, 1880s, B 33.75", W 20.5", H 34.75", Ht 12-15", (laces torn & tied, underarm stains, discoloration); 1 embroidered "Corset" bag, 6.75"x31", (light fraying); 1 lilac silk, 1890s, label "Lily of France" & "Dr. Samuels, San Francisco", B 27", W 20", H 30", Ht 8.5-12", (silk worn & shattering at edges & tearing left B, laces worn), (all w/ spot stains & oxidizing metal fixtures); 1 pink twill stripe corset w/ elastic godets, 1910s, W 31.5", L 8-11.5", all poor- very good.

Spring Fling - Vintage Visions



211: J. C. C. CORSET FORM, AMERICA, c. 1912

USD 800 - 1,200

1 Jackson Corset Co. mannequin, Jackson MI, USA, B 36", W 22.25", H 37.5", Ht 40", (knit fabric stained & w/ holes, painted base worn & dirty) very good.



212: FOUR CRINOLINE CAGES, 1880s

USD 400 - 600

All of cloth encased & exposed steel wire: 1 crinoline cage, L 28", (velcro added at W, pink synthetic ribbon added, bones rusty); 1 white cage, crinoline w/ hoops at buttons, W up to 27", L 24.5"; 1 white crinoline cage w/ hoops, W up to 27.5", L 28.5"; 1 red crinoline cage, W 26.25", L 29.5", (hoops bent, hoop coverings stained from oxidization), (all w/ worn & stained canvas & rusted metal) all fair.



213: FOUR PAIR DECORATIVE UNDERSLEEVES, 1830-1850s

USD 300 - 500

1 pair double puffed organdy undersleeves w/ hand whitework embroidered engageante cuff, trimmed w/ picot edged pink silk taffeta ribbon, 1830-1850, L 26", upper arm circ. 16.5", wrist 12", very good- excellent; 1 pair net undersleeves w/ wrist poof, mid 19th C, L 18.5", upper arm circ. 26", wrist 8" very good; 1 pair net undersleeves w/ double ruching & inserted pink silk velvet ribbon lacing & festoons, 1840s, L 16", upper arm circ. 17", wrist 20", (ribbon worn, 1.25" hole) good; 1 pair net undersleeves w/ linen appliqué & chain stitch embroidered turn back cuffs, 1850s, L 18", upper arm circ. 14", wrist 7", very good (all w/ discoloration, spot stains & tiny-0.25" holes in net).



214: GENEROUS LOT OF BOWS, JABOTS & ACCESSORIES, 1880-1915

USD 300 - 500

Forty seven including Irish crochet, bobbin lace, Brussels mixed lace, various embroidery techniques, tape lace & chemical lace, accessory Wd range 2.25"-7.5", L range 41"-51.5", jabot Wd range 3"-12.5", L range 5.5"-14.5", bow Wd range 4.75"-9", L range 2.5"-11": 1 white & blue embroidered linen jabot, (fading, light wear); 1 bow w/ long tails, (large holes at seams & some shattering, tiny-0.25" holes in lace) all fair- very good.



215: FOUR IRISH CROCHET COLLARS, 1890s

USD 300 - 500

1 heavy linen Irish crochet collar edged w/ thread donut buttons, WD 3.5?-6.5?, L 44?, (broken brides, scattered tiny pulls/fraying) very good; 1 small Renaissance inspired collar w/ Van Dyke edging, WD 3.75?- 5.5?, inner Circ. 15.5?, outer Circ. 30?, (small areas of fraying throughout, few broken brides) very good-excellent; 1 ecru silk collar w/ lappets, 3 dimensional florals, buds & varied open thread donut buttons, Wd 3.5?- 8.5?, L 39.5?, (1 detached & included flower, broken brides, 1.5" & 2.5" gap in edging, small pulls/fraying) good; 1 SH collar w/ extended lappets, 3 dimensional petaled flowers w/ interlacing stems, Wd 3?-9.5?, L 69.5?, (scattered broken brides, pulls/fraying) very good.



216: THREE SILK MALTESE COLLARS, LATE 19TH- EARLY 20TH C

USD 300 - 500

Collar w/ extended lappet & scalloped triple Van Dyke back, Wd 4?-9.5?, Circ 17.5?, L 77.5?, (small pulls, areas of fraying scattered broken brides) very good; 1 Baroque inspired broad collar w/ hexagonal leaf filled border & w/ stylized lozenges & interstices w/ typical Maltese leaf forms, Wd 5.5?-6.5?, inner Circ. 37.5?, Outer Circ. 95.5?, (scattered broken brides, light fraying at edges) very good-excellent.; 1 collar w/ 3 band band of decoration w/ Maltese interstices, butterfly motif in imitation filet, Wd 6.75?-9.25?, Inner Circ. 16?, Outer Circ. 52.5?, 9, (0.5" seam opening at 1 end) excellent.

Spring Fling - Vintage Visions



217: SIX LACE LAPPETS, 1870-1900

USD 400 - 600

1 Point de gaze lappet, Wd 3.5"-5.5", L 54.5", (3 tiny dark stains left side, lightly frayed edges); 1 bobbin lace appliqué, embroidery & insertion, square ends finished w/ 3 large flowers, Wd 3.75", L 38.5", (repairs, broken brides); 1 net w/ atypical needle lace appliqué, Wd 3"-3.5", L 48.75", (repairs in net, lightly frayed edges); 1 net & bobbin lace appliqué w/ shaped ends, Wd 3.75", L 45.5", (1.75" partial seam opening); 1 white bobbin lace appliqué, Wd 2.25"-4.25", L 42.75"; 1 tapered lappet w/ bobbin lace appliqué, Wd 2.25"-3.25", L 55", (broken brides), (all w/ tiny-0.25" holes) all good- very good.



218: THREE CHANTILLY LACE LAPPETS, 1860s

USD 400 - 600

1 smaller w/ equine motif w/ florals & buds enclosed in slender border motif, Wd 1.75?- 3?, L 41.5?, (0.25" hole at 1 end, edges lightly frayed) very good; 1 large lappet w/ classic rose, violet, leaf motifs w/ foliage & hydrangea border, Wd 1?-9.75?, L 118?, (light fraying at edges, tiny- 0.5" holes, 0.5" tear at 1 edge) good; 1 w/ full stemmed tulip motif, architectural elements, Renaissance swags & festoons w/ floral buds & border of spoked medallions, Wd 3?-5?, L 43.75?, (scattered tiny-0.25" holes, 0.5" repair at both sides) very good.



219: SIX CHAINSTITCH OR TAMBOUR COLLAR ACCESSORIES,

USD 300 - 500

All chainstitch or Tambour embroidered natural or stylized florals & Baroque inspired motifs on various net grounds: 1 shaped bertha collar, Wd 4?-7?, L 35?, (ends & edges cut); 1 iris motif collar, Wd 1?-6?, Circ. 31? & 51.75?; 1 bodice insertion, Wd 2.25?-3.75?, Circ. 20.5?; 1 narrow collar, Wd 3.5?, L 47.25?; 1 w/ tiered ruffle, Wd 6.5?-8.5?, Circ. 33.5? & 58.75?; 1 large draped bertha collar, Wd 3.5?-6.25?, Circ. 43.5 & 106?; 1 bertha collar w/ daisy motif, Wd 5?-6?, Circ. 26.5? & 56.75?; 1 bertha w/ vine motif, Wd 8?, Circ. 29.5? & 74.5?, (most w/ light wear & fraying, tiny-small holes, some w/ 0.25"- 1.5" holes/repair) all fair- very good.



220: COLLECTION OF WHITEWORK EMBROIDERED COLLARS, 1830-1910

USD 300 - 500

1 Indian whitework collar embroidered w/ raised florals w/ needlework centers, 1830s, Wd 3.5?-8, Inner Circ. 21.5?; 1 Indian whitework embroidered collar w/ fine drawn thread work, 1840s, Wd 4?-6.5?, Circ. 18.5?; 1 broad collar w/ whitework embroidery & lace insertions, 1890-1910, Wd 1.75?-8?, Circ. 18.5?; 1 Heileman machine embroidered scalloped collar w/ broderie anglaise & white work, c. 1900, Wd 1?-5?, Circ. 18?; 1 partial Indian embroidered collar, fine whitework embroidery w/ drawn thread work fillings & original bobbin lace edging, 1830s, Wd 5.25?, L 23?; 1 whitework collar, Wd 0.75?-2.5?, L 14?, (most w/ light wear, some w/ tiny-0.25" holes, some w/ 0.25-1.5" holes/repairs) all good- excellent.



221: THREE FINE MIXED LACE BERTHA COLLARS, 1890s

USD 300 - 500

1 Point d' Argent collar, Wd 5.75", inner circ. 47.5", (small tears inner edge, tiny-0.25" holes to net) very good; 1 Brussels mixed lace, Wd 5.5?, Inner Circ. 44.75?, (pulls to edges, 3 small tears at inner edge) very good; 1 mixed tape & bobbin lace w/ needlelace insertions, Wd 7.75?, L 39?, (scattered broken brides) excellent.



222: BABY BONNETS & MATCHING SET, 1810-1920s

USD 300 - 500

1 unworn set c/o bonnet, jacket & shoes all of tape & needlelace lined w/ ice blue silk crepe de chine or china silk, early 1920s, jkt CH 21", L 9.5", shoes L 5", cap Depth 7", Circ. 19", (lace & lining discolored, ribbon ties on jacket & cap worn, scattered spot stains) all very good; 19 baby bonnets including crocheted, knitted, bobbin lace, tape lace, drawn thread work, ribbon work, Nanduti & whitework, 1810-1920, Depth range 4.5"- 6.5", Ht range 5.75"-9", (most w/ fraying &/or broken brides) all very good- excellent.

Spring Fling - Vintage Visions



223: SIX LACE BOUDOIR CAPS, 1890-1910

USD 300 - 500

1 bobbin & tape lace appliqué on net w/ full shaped flounce, Circ 23.5?, Depth 8?, (scattered tiny-0.25" holes); 1 entirely tape lace w/ needle lace fillings, Circ 24?, Depth 8.5?, (0.25" spot stain at crown); 1 tape lace w/ fine needle lace fillings, Circ 32?, Depth 10?, (discoloration); 1 tape appliqué on net w/ princess lace flounce, Circ 23.75?, Depth 9?; 1 tape lace w/ bobbin & needle lace fillings, Circ 23?, Depth 7.5?; 1 bobbin & needle lace, assembled from parts, Circ. 22?, Depth 5?, (most w/ fraying & broken brides) all good-very good.



224: TEN EMBROIDERED OR LACE CAPS, EARLY 20TH C

USD 300 - 500

Depth range 8.25"-11.75", circumference range 22"-27.25": 1 applied net bridal headpiece, (repaired ruffle, holes, light fraying); 1 pale peach satin crown & bow, (shattering, 2" tear to net); 1 white lace & net cap, (2 seam openings, light stains); 1 Folk bonnet of cream embroidered net w/ pink ribbon, (discoloration); 1 embroidered net w/ purple ribbon, (discoloration, small holes); 1 lace w/ pale pink ribbon & bow, label "A la Pensee 5. Faub St. Honore, Paris", (tiny pulls & stains); 1 black lace cap, (stains); 1 lace cap w/ white satin ribbon & bow, (tiny spot stains, discoloration); 1 lace cap w/ 3D pink roses, (bow shattering, seam opening neck, spot stains); 1 lace cap w/ peach crown, (2 bows detached & pinned, shattering) all fair-good.



225: TWO BOLTS RICHARD TURGEON TEXTILES, NEW YORK, EARLY

USD 400 - 600

1 roll 'Macao', pattern #0-15, repeat 13", c. 1973, Wd 49.25", L 11+ yds, (end raw, stains at edges, inking at selvedge on 1 side); 1 roll 'That Dot' in blue, pattern #37-6, repeat 30", Wd 54.5", L 3+ yds, (0.25" hole, ends dirty & discolored, pen inking to both ends) both very good.



226: TWO BOLTS RICHARD TURGEON ?LADY WINDERMERES

USD 400 - 600

1 roll 'Lady Windermere's Fern' in green, pattern #G-15, repeat 25", 1972, Wd 49.5", L 15+ yds, (inkings to 1 end, 16" x 7" swatch cut from 1 end, ends fraying & discolored); 1 roll 'Lady Windermere's Fern' in peach, 'Custom Handprint by Richard Turgeon c. 1972', Wd 49", L 5+ yds, (3"x3" swatch cut from 1 end, ends raw, dirty, discoloration, marker inking near cut, tiny spot stains) both very good.



227: LARGE BOLT RICHARD TURGEON ?OVER THE

USD 400 - 600

1 multicolor striped canvas, Wd 49.5", L 30+ yds, (2 lengths w/ 1 seam, ends discolored) excellent; 1 wide stripe brown vinyl, Wd 48.5" w/ 8.5" edging on 1 side, L 3+yds, (writing on selvedge, edges dirty) very good; 3-tone brown striped vinyl, Wd 48.5" w/ 7.75" edging on 1 side, L 34.5", (8" x 1" swatch cut from 1 end, stains & discoloration) good.



228: SIX MATCHING RICHARD TURGEON CURTAINS, NEW YORK, EARLY

USD 300 - 500

6 tie-back curtains, 'Edo Grille' in brown, pattern #10-K, Repeat 28" & 'Edo Fleur' pattern #EF-11, Repeat 28", Wd 43"-43.5", L 89"-89.5", ties 3" x 16.5"; (2 w/ 27" of fading left side & light wear, 1 w/ 36" area of fading right side, worn, small stain, 1 w/ 28" area of fading left side & 41" to right, 1 w/ 30" area of fading left side, stained right edge, 1 w/ 41" area of fading left side & 20" right, worn, 3.5" stain left edge, all ties w/ fading & stains, 2 w/ seam openings) all good.



229: SPITALFIELDS SILK OPEN ROBE & PETTICOAT, COLONIAL,

USD 6,000 - 8,000

Open robe of Spitalfields silk w/ fitted back construction a l' Anglaise, CF hook & eye closure edged w/ passementerie & silk flowers to pleated décolleté, elbows, double engageante sleeves & to CF skirt opening, petticoat front w/ deep double draped & pleated furbelows w/ gathered & pleated band to upper edge, entirely constructed of Spitalfields silk brocaded broché, point de rentrée, twill design on tabby ground, c. 1736, textile dimensions: WD 19.75, length of repeat 23", selvage Wd 0.25", (CF bodice altered in the 19th C, 2.5" repair/shattering at left W, petticoat: few tiny-0.25" worn spots throughout, modern W band, 5.5" split above furbelow, 3.5" & 2.5" splits above hem) good- very good. Provenance: Faith Savage Waldo.

Spring Fling - Vintage Visions



230: IVORY PATTERNED SILK TAFFETA EVENING GOWN, MID 1850s

USD 500 - 800

Ivory silk taffeta gown, wide bateau neckline, puff sleeves, CF patterned silk covered button closures, applied W band & H band of patterned silk ribbon, attached full skirt knife & cartridge pleated into W band w/ 3 attached tiered ruffles of elaborate jacquard woven patterned silk in shades of blue & ivory; matching Swiss W back lacing evening bodice w/ bateau neckline & cap sleeves both trimmed in patterned silk ribbon, B 39", W 23.25", L 53"-67", (1" stain CB W, spot stains seat & left side, tiny pulls, large light stain right H, modified at W) evening bodice B35", W 23.75", L 11.5"-16", (pulls, spot stains right B & binding, original lacing replaced w/ synthetic ribbon) good- very good.



231: SAPPHIRE BLUE PATTERNED SILK DAY DRESS, MID 1850s

USD 400 - 600

Silk taffeta gown w/ wide bateau neckline, gathered double puff pagoda sleeves trimmed w/ wide Jacquard woven silk bands, CB closure, attached cartridge pleated skirt w/ 3 tiered ruffles of chinoiserie inspired Jacquard woven patterned silk in blue & black floral bands enclosed in geometric zigzag border; matching pelerine w/ CF hook & eye closures & decorative beaded, corded & silk floss covered bud buttons, edged w/ band of patterned silk, B 38", W 27", L 54.4", cape SH-SH 16", L 16", (all CB closures replaced w/ velcro, shattering silk at SHs of dress, 4" shattering CB of cape, wear inside neck & spot stains CF neckline) fair.



232: CENTENNIAL PILGRIM COSTUME & LADIES DAY DRESS, c. 1876

USD 400 - 600

1 blue silk taffeta day dress, CF domed button closures covered w/ ribbed silk, 2-pc military style sleeve, pleated self ruffle to above B line, attached full skirt w/ knife & cartridge pleated W & wide hem ruffle pleated at top edge, wool hem saver, matching belt w/ tri-lobed peplum edged pleated self ruffle, late 1860s, B 32.25", W 24", L 51.5", (missing button, 1.5" seam opening dart left CF, tiny stains & hole CF W, repair left underarm) good & belt W 25", L 13", (no CF W closure, hem undone left CF) very good; 1 brown glazed cotton dress girl's pilgrim style centennial costume, c. 1876, B 35.5", W 25.5", L 42", (no closures, W band fraying at right H, 1.25" tear right sleeve puff, wear holes, skirt shattering) fair.



233: RAW SIENNA SILK FAILLE AFTERNOON OR EVENING GOWN, LATE

USD 500 - 800

2-pc 18th C revival gown c/o back lacing Swiss bodice yoke, cuffs & extended back peplum trimmed w/ furbelow style knife pleated self-fringed ribbon, self bow to sleeve cuff, full trained skirt cartridge & knife pleated to W band & trimmed w/ tiered self ruffles at sides & around back hem in imitation overskirt, B 36.5", W 22.25", L 15.5"-26", skirt W 22", L 39"-62", (no laces, stains & discoloration, self fringe worn, hem worn, right half of CB cartridge pleat unpicked, W band worn & torn) bodice excellent, skirt good.



234: PRINTED COTTON DAY DRESS, c. 1855

USD 500 - 800

Printed cotton voile dress w/ diamond & miniature shaded tree pattern in alternating pink & white, broad scooped neckline edged w/ double piped band & drawstring, open pagoda sleeve w/ double dropped SH poof, sleeve edged w/ self-puff & applied self-ruffle, narrow lace trim to top of bodice & sleeves bodice w/ vertical gathers from neckline to W front & back, cartridge pleated attached skirt w/ broad hem flounce, matching pelerine, B 44.5", W 25.25", L 58", capelet L 13.5"-16", (repairs to both SHs, 2.25" repair CF B, 1" hole right underarm, trim detaching at cuffs) good. Museum of the City of NY.



235: SILK MOIRÉ DINNER GOWN, 1869-1870

USD 500 - 800

2-pc gown of grey silk moiré w/ Swiss day bodice w/ CF button closures covered in bronze silk & needle embroidered net, bodice & 2-pc shaped sleeves trimmed w/ black & blond Chantilly lace, Alençon lace collar, trained skirt w/ broad gathered ruffle from either side of CF extending into hem at back, triple draped escalier at CF, skirt w/ attached cotton gimp, 1869-1870, B 40", W 31.75", L 16"-20", skirt W 30", L 41.5"-59.5", (tiny-0.25" holes in lace collar, underarms stained, wear lines at B, bodice altered, 0.25" hole & discoloration CB slip bodice, 7" x 2" light stains CF hem, 5" line of tiny-0.25" paint stains hem) good. Museum of the City of NY.

Spring Fling - Vintage Visions



236: CHANGEANTE RIBBED SILK DAY DRESS, LATE 1860s

USD 400 - 600

3-pc blue to green ribbed silk day dress c/o back lacing bodice w/ Swiss W front, V-neckline trimmed w/ lace double ruffle, Van Dyke scalloped self-trim appliqué over lace flounce in faux pelerine style to bodice, cuff, & used as hem on overskirt, slightly trained skirt & overskirt both w/ cartridge pleated CB, B 39", W 29.25", L 14.25"-18.75", skirt W 24", L 38"-46.5", overskirt W 23.5", L 41", (no bodice laces, lace trim shattering, light underarm stains, spot stains to all pieces, lace shattered on overskirt, overskirt W altered, tiny-0.5" holes to lining, skirt W band pleating badly repaired CB) good.



237: CHANGEANTE SILK TAFFETA VISITING DRESS, c. 1870

USD 500 - 800

2-pc green to gold changeante silk taffeta gown c/o day bodice w/ CF hook, eye & button closures, Swiss W trimmed w/ wide silk velvet bands to extended peplum at CB, military shaped 2-pc sleeves w/ wide self-cuffedged in green silk velvet pleated & gathered to wide green silk velvet band w/ pleated bow, full trained skirt w/ 3 shaped bias cut green silk velvet bands to front terminating in large flat bows, B 34.5", W 22.5", L 16.5"-32", skirt W 23", L 39"-59", (shattering around CF buttons, underarm stains, inside elbows & 3.4" stain right B, missing 6 buttons, trim discolored left cuff, taken in at SSS, scattered stains to skirt, shattering at W) good-fair. Museum of the City of NY.



238: CELADON SILK FAILLE & LISERE EVENING GOWN, 1880s

USD 400 - 600

Fitted bodice & princess line split skirt of lisere in entwined floral brocaded silk galloon motifs w/ deeply tucked blonde lace overlay to bodice front, neckline & engageante cuffs, extended celadon silk faille long sleeved over bodice to train, gold silk satin petticoat w/ double ruffle at hem extending under crenelated & looped tabs, c. 1877, B 32.5", W 23.5", L 55"-76", (shattering throughout faille, light stains CB W, lining shattering) fair; t/w brown taffeta w/ net & chenille, B 41", L 20", (tacks holding up trim undone).



239: POLONAISE WALKING DRESS, 1870s

USD 400 - 600

2-pc navy cotton day dress w/ extended princess line polonaise bodice & 4 tiered ruffled skirt embellished at all edges w/ Heilmann embroidered scalloped ruffle bands, CF linen covered button closure, 2 patch pockets at HS w/ decorative buttons, 2 larger decorative buttons at CB W, B 36.5", W 24", L 60", skirt W 22", L 40"-45.75", (buttons worn, 2 partially repaired holes CF W, tiny stains, 2 seam openings at W SSS, light stains around skirt hem & seat) good. The Society for the Preservation of Federal Hill & Fell's Point.



240: TWO SILK DAY DRESSES, EARLY 1870s

USD 400 - 600

2-pc blue & brown plaid silk taffeta day dress, fitted bodice w/ 2-pc military sleeves, front peplum & cuffs of black silk taffeta w/ silk braid, CF 2-tone glass button closure, slightly trained skirt w/ 3 chevron stripes in black taffeta w/ 2 ruffled faux apron front, late 1850s remade in early 1870s, B 39", W 27.5", L 24.5", skirt W 31", L 44"-48.5", (shattering, small stains & holes, underarm stains, no W closure, 1" seam opening & 2.5" tear skirt); 1 collar, circ 15", Wd 2"; 2-pc brown ribbed wool & silk trimmed w/ applied silk velvet edged w/ scalloped to CF, flounced peplum & skirt, CF self-covered bodice closure, paired flat self & velvet bows at skirt side, B 47.5", W 33", L 18.5-27", skirt W 33", L 40.5", (holes, tears, taken in) both fair.



241: DAMASK & SATIN VISITING DRESS, LATE 1880s

USD 400 - 600

2-pc brown silk damask day dress c/o long sleeved fitted bodice w/ round collar trimmed in lace ruffle, CF tucked panel of contrasting silk satin w/ CF metallic ball button closure, cuff w/ tabbed piccadill, slight peplum, skirt w/ asymmetrically draped satin overskirt, tabbed piccadill hem & double box pleated satin hem flounce, B 34.75", W 29", L 16.75"-22", skirt W 27", L 37.5"-39.75", (shattering & wear around hems & folds of CF, lace trim discolored & w/seam openings, stains, 2 tears above skirt hem, broken loops at W closure, 2 seam openings right CB W skirt, double stick tape at interior bodice) good.

Spring Fling - Vintage Visions



242: SATIN & RIBBED SILK STRIPED GOWN, LATE 1870s

USD 300 - 500

2-pc ivory satin & yellow ribbed silk striped gown w/ CF lacing bodice w/ glove length sleeve Van Dyke edge, slight back peplum, trained knife & box pleated at CB, attached half petticoat lining w/ full dust ruffle, B 37", W 25", L 17.5"-22", skirt W 28", L 41"-50.5", (no buttons, collar unpicked, lacing N/I, 2 seam openings each SH seam, hem wear & binding worn & unpicked, large light stains CB, right front & SH & underarms, stains to W band, seam opening skirt CF W & 2" at CB, no W closures, stains lap & seat) fair.



243: YELLOW SILK DAY DRESS W/ CHANTILLY LACE OVERLAY, MID

USD 400 - 600

2-pc yellow half silk dress w/ black lace overlay, high band collar, lace gathered for effect at CF & at back of skirt, 2-pc fitted sleeves, flared black chemical lace cuffs, unlined w/ lace edged dust ruffle, B 36", W 23", L 18", skirt W 23", L 41", (yellow shattering, tiny-1" holes in lace, 4.75" L shaped repair to lace left wrist, 3" holes to lace right underarm & sleeve, underarm stains, 1.5" seam opening at CF skirt W band dart, lace shattering esp. at left & right side skirt hems, black W band shattering CB) fair.



244: IVORY PATTERNED SILK DAY DRESS, EARLY 1890s

USD 300 - 500

2-pc ivory patterned silk day dress w/ woven dot & dash motif, self-covered standing collar w/ horizontal tucking gathered at CF, bodice w/ CF closure hidden w/ fullness from gathering to neckline into CF W pleats, blond lace draped faux pelerine collar, cummerbund W to small flat bow at CB, slight leg o? mutton sleeve to pleated cuff, skirt cartridge pleated at CB & w/ self hem ruffle, B 32.25", W 23.75", L 17.5-19", skirt W 24", L 41.75", (underarms stained, lace badly torn, large stains right side of skirt, spot stains & holes to lap) good.



245: ASYMMETRICAL SILK FAILLE DAY DRESS, EARLY 1890s

USD 400 - 600

2-pc dark grey green faille gown, bodice w/ released gathers into asymmetrical smocking at collar & W, left bodice front w/ appliqué ribbons & flat SH bow, 2-pc fitted sleeve w/ split SH & exposed puff, cast glass pong set starbutton set into concave disc, skirt w/ cascading panels pulled into drape w/ flat bow worked as floral element at left back H to knotted & fringed scarves panel at left H, B 38.5", W 29", L 20", skirt W 28", L 41-44", (spotstains, missing top button, let out at CB, swag tacks for pleating undone & partially detached, hem saver very worn, 0.5" spot stain lap, spot stains right side, no CB closures, W band stained) very good.



246: TWO SILK DAY DRESSES, 1892-1905

USD 400 - 600

2-pc black resist printed silk day dress w/ purple sprigs, black satin lapels & bodice W trimmings, ruched chiffon & lace B insert, c. 1892, B 45.5", W 34.5", L 19"-21.5", skirt W 34", L 43.5", (shattering to collar lining & sheer layer, 2 tiny holes front right SH) excellent; 2-pc resist dyed copper fine twill silk day dress, bodice w/ SH tucks, ample monobosom w/ CF insert of appliqué needle lace w/ silk chiffon alternating squares, fagotted collar w/ lace insertions, skirt w/ graduated triple tucking at hem, c. 1905, B 44.5", W 29.25", L 22", skirt W 27.5", L 41.75"-43", (collar lining worn & stained, lace cuffs worn, 0.25" holes right SH blade, stains esp. to lap, skirt unlined, 0.5" repair at W closure) good.



247: LABELED VELVET & FAILLE AFTERNOON GOWN, c. 1892

USD 400 - 600

2-pc maroon silk faille & velvet, faux vest bodice w/ high stand-in half collar, CF self covered button closures & half plastron of gold ribbed silk w/ silver wire & knotted straw braid in vermicelli floral motif, leg o? mutton sleeves, silk faille trained skirt w/ velvet side panels, cartridge pleated at CB, label "Jarrell Emerson", B 32.25", W 22.5", L 15"-19", skirt W 22", L 38.5"-47", (small areas of crushing, petersham stained & shattered, mildew patches CB of both, 1.5" seam repair right SH blade, label worn, CB hook & eyes rusty) fair. The Society for the Preservation of Federal Hill & Fell's Point.

Spring Fling - Vintage Visions



248: SILK DAY DRESS WORN BY SMITH COLLEGE GRAD, NORTHAMPTON

USD 400 - 600

2-pc day dress of sheer seafoam green silk over blue half silk satin twill, CB closing monobosom bodice w/ 3 tiers of lace edged ruffles, ruching & gathered lace to scoop neckline, fitted sleeve w/ flared lace trimmed cuff, full skirt w/ deep pleats at CB & w/ 3 rows of lace edged ruffles over deep narrow pleated hem flounce, c. 1900, B 34.75", W 23.5", L 15", skirt W 23", L 41"-47", (discoloration, light wear to lace cuffs, metal oxidizing, skirt pleating crushed, 0.25" hole to seat) very good. Provenance: Alice Weed Essick, while attending Smith College in Northampton, Massachusetts.



249: SILK SATIN & EMBROIDERED NET EVENING GOWN, 1900s

USD 500 - 800

2-pc folk inspired cream silk satin gown w/ chainstitch ombre pastel embroidered black net overlay overlay & attached ruffles, bodice w/ square neckline trimmed w/ ruffled black net & flounce of embroidered net, puff sleeves, celery green silk pleated ribbon trim at SHs, cuffs & to W w/ bow festoon at cuffs & CB W, full cream silk satin skirt w/ embroidered black net overlay & attached ruffles, B 37.25", W 27.25", L 15.5"-17", skirt W 25.5", L 40"-43", (underarm stains & net torn, holes in net at hem, satin underskirt stained, holes to W ruffle) very good.



250: SILK CHARMEUSE DAY DRESS, c. 1903

USD 400 - 600

2-pc silk charmeuse gown moss green stylized reptilian patterned spot motif undulating on ivory ground, monobosom bodice w/ high stock collar, lace bertha collar in chain stitch on mesh ground, CF tapered ties & cuffs trimmed w/ 2 bands of charmeuse backw/ black ribbon edging detail, full bishop sleeve w/ pleated shaping, CB hook & eye closure, bell shaped skirt w/ applied vertical band masking front construction, shaped flared skirt flounce narrow at CF & deep at CB creating slight train, B 34", W 30.5", L 18.5", skirt W 26", L 40.5-52", (7" of bodice hem raw CF, lace yoke tears & holes & stabilized, stains & discoloration, stain CF torso, loose hooks & eyes, skirt shattering CB W, W band torn and missing for 3" CB, stains to seat) fair.



251: SILVER SILK SATIN EVENING DRESS, NEW YORK CITY, c. 1908

USD 500 - 800

2-pc silver satin dress trimmed w/ multiple bands of tucking across SHs, CF, tiered sleeves & skirt, bodice w/ high stock collar, crossed straps over dotted mesh dickie CF over embroidered Byzantine panel accentuated w/ embroidered buttons, Renaissance style banded sleeves w/ finely pleated chiffon & tucked bands of cotton dotted mesh under tucked silk satin over sleeve closed at back w/ self-covered domed buttons, paired double button CB tabs w/ twin cascading tails terminating in silk tassels, slightrain skirt w/ tucked bands & applied ruffle above hem, label "E.C. Murray, 9 E 38th St. New York", B 38.5", W 30", L 18.5", skirt W 28", L 43.5"-54.5", (shattering to lining, skirt lining mostly removed, pulls, some CB snaps missing) very good.



252: TWO BEADED OR SEQUINED EVENING DRESSES, MID 1920s

USD 400 - 600

1 black crepe chiffon & crepe back satin dress w/ Luneville bands of short chatoyant bugle beads to cross over front extending to left front of skirt, 2 piece flared sleeve w/ beaded elbow bands, attached crepe back satin skirt w/ beaded chiffon hemflounce, B 38", H 35", L 41"-45", (3 tiny & one 0.5" holes right cuff, 0.25" hole left SH blade, several pinholes at W) very good; 1 black Luneville beaded & sequined net evening dress w/ sequined trellis over bodice w/ beaded stylized clouds & graduated sequin lozenge fan design at CF & CB W & skirt, handkerchief sleeves w/ picot edged slit seam caught w/ 3 bugle beads, B 40", H 37", L 40.5", (pulls & tiny holes to net, 0.25" hole right B, 0.5" hole right SH blade, 2" tear right SH & 0.75" left SH) good



253: ONE EVENING & BOUDOIR DRESS, 1920s

USD 400 - 600

1 cream crepe back satin robe de style inspired w/ handmade Brussels mixed lace collar, double chevron beaded bands to CF, drop W & in V at CB, B 38", H 39", L 42.5", (bead loss, tiny pulls & spot stains, 4.75" seam opening left of CB collar, large pulls to lap, light underarm stains); 1 cream crepe de chine w/ embroidered cutwork yoke neckline, rows of triple tucking to W line, embroidered patch pocket & slender tie belt, B 40", W 41", L 47.75", (stains, 0.5" tear CF collar, 0.75" seam opening right corner of pocket) both good.

Spring Fling - Vintage Visions



254: TWO PARTY DRESSES, 1920s

USD 400 - 600

1 red silk velvet party dress w/ handkerchief hem & bow at left H, B 36", H 34", L 37.5"-41.5", (velvet worn at underarms, SHs & neckline, hem tape shattering, 1" stain upper CH near right armscye, small crushed areas) good; 1 cream chiffon w/ tiered ruffled lace in petal design, integrated slip, B 28", H 29", L 40.5", (2 tiny spot stains & 0.5" repair CF B, tiny pulls, 1.25" seam opening at left hem trim) good.



255: SALMON PINK HAND BEADED PARTY DRESS, 1920s

USD 400 - 600

Pink crepe de chine hand beaded party dress w/ plain & silvered crystal beads in Near Eastern motif, scoop neckline, blouson bodice w/ drop W & petal cap sleeves, front & back panels w/ for tabard style skirt w/scalloped hemline, attached underdress, B 42", H 38", L 50", (light underarm stains, tiny-0.25" spot stains above hem) very good- excellent.



256: TWO GREEN CHIFFON VELVET DRESSES, 1920s

USD 400 - 600

1 dark emerald green silk satin w/ silk crepe inserted bands at CF, W & cuff w/ Art Deco chiffon velvet blouson sleeves w/ fitted silk crepe forearm cuff, paired CF bow, B 47", H 45", L 46.5", (right underarm starting to shatter, 5.5" stain CB, tiny holes in sleeves, 1.75" stain left cuff, light underarm stains) fair; 1 complex geometric pattern of chiffon voided silk velvet w/ silk double at back & side of drop W, B 40", H 39", L 39.5", (underarm stains & shattering, tiny-0.5" spot stains, light fraying CF W seam) good. From the Collection of Smith College.
