

Augusta Auctions



Annual Autumnal Elegance

Wednesday - September 14, 2022

Annual Autumnal Elegance



1: CREAM SILK SATIN EVENING DRESS, MID 1820s

USD 2,000 - 4,000

Cream silk satin w/ bateau neckline, short silk tulle covered puff sleeves each w/ 3 curved leaf appliqués constructed of densely pleated & shaped self-band w/ corded center stem, piped edges & box pleated ruffle to top edge, fitted bodice & skirt hemw/ bias self-cording in undulating wave & manipulated into trefoil motif sprouting from each vertex, piped neckline, armhole, sleeve cuffs, SHs & back bodice seams, skirt w/ silk tulle overlay, CB button closures, B 34.5", W 25", L 53", (minor underarm stains & shattering, tiny-0.75" spot stains, 4.5" repair to underskirt & 4" to overskirt, 2.75" tear CB net opening, minor scuffs/pulls) very good. Ohio State Historic Costumes & Textiles Collection.



2: THREE PIECE WOOL EVENING GOWN, LATE 1860s

USD 2,000 - 4,000

3-pc glazed magenta wool sateen evening gown w/ square neckline & long sleeved bodice, silk mesh covered CF button closures & 4-part puffed & draped overskirt w/ triangular CF panel & flared shaped panels from either side of W, all w/ applied ribbon trimmings cut & manipulated into Van Dyke points w/ applied corded looped edging, full trained skirt, machine chain stitching, B 36", W 22", L 13.75", skirt W 22", L 39.5"-58.8", overskirt W 25.5", L 26", (underarms stained & w/ 0.25"-0.75" holes, skirtw/ light staining at hem, cluster of tiny-0.5" stains below seat, sm seam opening at W band, no closures, overskirt w/ trim detaching at CB, 0.25" stain at CF, W band worn) very good- excellent. From the Collection of A.T. Jones & Sons.



3: SILK PLUSH DINNER DRESS, c. 1885

USD 500 - 800

2-pc silk plush burnt Sienna gown w/ Basque bodice w/ CF closure & cuffs having cast & marcasite embellished buttons, faux amber glass beaded passementerie pineapple motif appliques to front yoke & SHs, crochet neck edging, asymmetrical skirt w/ front drape gathered to right H & w/ integrated bustle, B 34", W 20", L 19.5"-22.5", skirt W 20", L 41"-45", (neck ruff later addition, bead loss, metal tarnish, wear to edges, discoloration SHs & B, middle button missing center, 1" tear back skirt W band, stains/wear to hem) very good. From the Collection of A.T. Jones & Sons.



4: HEAVILY CORDED & EMBROIDERED VELVET COAT, c. 1915

USD 300 - 500

Cream velvet evening coat w/ dense applique cording, padded Ottoman inspired embroidered cuffs, CF & CB panels, silk covered & needle embellished decorative barrel buttons, B 36", L 47", (lining shredded, 5 missing CF baubles, shattering right SH & CB neckline, discoloration) fair. From the Collection of A.T. Jones & Sons.



5: KASHMIR SHAWL DOLMAN, 1870s

USD 500 - 800

Wool paisley dolman brilliantly pieced from 1850s Kashmir shawl, embroidered gates manipulated to create sleeve edging, lined in burgundy silk velvet & quilted silk satin, B 37", W 45", L 35.5"-37", (light collar stains, fading, stains to velvet lining edges, second button missing, tiny-0.75" holes throughout, some quilting stitched undone) good. From the Collection of A.T. Jones & Sons.



6: FAUVIST INSPIRED LAME & SILK VELVET REVERSIBLE EVENING COAT, 1910s

USD 800 - 1,200

Woven & overprinted lame patterned silk in Fauvist floral & arboreal motifs & Royal Blue silk velvet reversible evening coat w/ corded & ruffled convertible collar, long sleeves w/ triple gathered cording, B 55", W 57", L 44", (lame tarnished w/ many pulls, lining detaching bottom hem) excellent. From the Collection of A.T. Jones & Sons.

Annual Autumnal Elegance



7: UNWORN SPOON BUSK CORSET, c. 1880

USD 500 - 800

Lavender cotton sateen w/ steel spoon busk, decorative machine quilting & appliques in cream & orange over double B godets, cream lace applied along top edge w/ red ribbon insertion, embroidered finishing at base of stays, lavender enameled grommets, laces included, stamped "716", B 38.5", W 30", H 35", L 9.5"-13.5", (light discoloration/tiny spot stains, 0.25" wear spot CB right grommet) excellent.



8: IZOD'S & SONS UNWORN BLACK SILK CORSELET, c. 1890

USD 500 - 800

Black silk corselet w/ yellow silk embroidery, tangerine silk topstitching, tangerine flat twined cord insertion to lace trim at top edge, twill cotton lining, original lacings included, stamped "IZOD's Patent Moulded Sewn Corsets, Trade Mark 539", B 32.5", W 24", H 31", L 7.25"-11.25", (light stains/discoloration, metal tarnish, fraying to lower embroidery at left W/H) excellent. Trademark reference: Wilson, Elizabeth. Adorned in Dreams: Fashion and Modernity. United Kingdom, Rutgers University Press, 2003, pg 98.



9: ONE SUMMER & ONE WEDDING CORSET, SPRINGFIELD MA. & FRANCE, 1910s & c. 1885

USD 400 - 600

1 cream cotton summer corset in patterned open geometric leno weave, attached elasticized garters, 1910s, stamped "Baystate Corset, Style 359 28 Waist", B 32.5", W 29", H 42.5", L 14"-16.5", (laces N/I, 0.5" hole left of CB, few tiny holes throughout, light stains/discoloration, metal tarnish); 1 cream patterned silk wedding corset w/ attached elasticized garters, metallic fleur-de-lis & crown motif dress clip at front right W, flat silk laces included c. 1885, stamped "Au Bon Marche, Garanti??", B 33.5" W 19.5", H 31.5", (few tiny-0.25" spot stains, wear to embroidery at boning, shattering underarms, metal tarnish) both good-fair.



10: TWO BLACK COTTON CORDED CORSETS, AMERICA, 1892 & 1883

USD 500 - 800

1 glazed black cotton sateen w/ corded geometric B panels, steel busk front closure, adjustable SH straps w/ button closure, w/ original lacings, stamped "Kabo Style 201, Pat. Feb. 23 '92", B 27", W 19", H 31", L 22", (laces N/I, discoloration/stains to lining, busk poking out of casings, shattering around W, underarms & hem) fair; 1 heavily corded glazed black cotton sateen corset w/ steel busk & single side bone, double corded gathers across B w/ adjustable panels for insertion of B improvers, SH straps w/ snap closures, stamped "Manufactured by the Reliance Corset Co. Patent Feb 21, 1883 Jackson, Mich.", B 34", W 20", H 30", L 22.5", (laces worn/broken, discoloration/spot stains to lining) good.



11: RARE VARGAS NIGHTGOWN, AMERICA, MID 1950s

USD 1,200 - 1,800

Nylon tricot nightgown w/ pink nylon tulle hem & broad SH straps extending over white lace cups, printed w/ Vargas girls, celestial motifs & treasure chests, printed "Vargas" signature, B 36.5", W 28", L 54.5", (net binding left lace cup detached for 5.5", lace cup torn away from left edge & for 1.5" at bottom, 3.5", 2" & 1.5" seam openings/tears in darts both cups, 1.75" tear at right edge of right cup, 2.75" detached binding left arm/sleeve) good.



12: UNUSUAL LOBSTER TAIL BUSTLE & CAGE CRINOLINE, 1870s

USD 800 - 1,200

1 lobster tail crinoline cage w/ highly unusual gathered incorporated cover, W up to 29", L 30", (metal rusting & causing stains, leather worn & stiff, general staining, small holes in fabric) very good; 1 narrow natural form cage crinoline, c. 1880, W 33"-40", L 36.5", (remaining orig canvas straps stained/very worn, straps partially replaced, metal rusted, canvas loop coverings worn/stained, loops slightly misshapen) fair.

Annual Autumnal Elegance



13: TWO ELEPHANT & CASTLE MOTIF PUCCI PLAYSUITS, ITALY, c. 1955

USD 1,500 - 1,800

Both long sleeve w/ CF button closures, integrated shorts, elephant & castle motif is based on a misinterpretation of La Infanta de Castilla: 1 larger interlocking irregular stripe in blue & green w/ B & W checkerboard & elephant & castle, c. 1955, label "Emilio S.R.L. Made in Italy, Capri, Florence", B 38", H 38", L 31.5", (few scattered small light spot stains, 0.5" spot stain B); 1 cotton twill reduced pattern in shades of blue w/ small elephants, front panel pieced to create pockets & horizontal chevron, c. 1957, label "Emilio Pucci Florence-Italy, 100% Pure Cotton, Made in Italy", B 40", H 40", L 31.5", (1 detached & incl button, few scattered tiny spot stains) both excellent. Museum at FIT.



14: PUCCI BIKINI & COVERUP, ITALY, c. 1967 & c.1970

USD 800 - 1,200

All pieces w/ label "Emilio Pucci-Florence Italy, 100% Pure Cotton": 1 cotton velveteen coverup in pink, white, grey & blue Art Nouveau pattern on black ground, shirt collar, CF zip closure, deep armlet openings, c. 1970, label "Lord & Taylor", SH-SH 18", L 31", (light discoloration) excellent; 2-pc in shades of orange, yellow & black in kaleidoscopic motif, bottoms w/ breach clout front panel & ruched Hs, label "Saks Fifth Avenue", B up tp 31.5, Wd 0.75"-4.5", underB up to 30", bottoms W 31", H 33", L 10.5", (cup lining shredding, seam opening right underwire, elastic shot, tiny spot stains, 0.5" hole inside W band, fading) good. Museum at FIT.



15: PUCCI COLOR BLOCK TOP & JACKET, ITALY 1950s

USD 500 - 800

1 mi-parti inspired color block shirt in black, cream, aqua & fuchsia, dolman sleeve, 1950s, label "Emilio S.R.L. Made in Italy, Capri, Florence 100% Pure Wool", unstretched B 36", W 31", L 24", (many 1"-3" seam openings at hem, right cuff hem falling, 1" seam opening neckline) excellent; 1 orange & yellow jacket pieced into diamond motif front & back, mi-parti collar, CF abalone buttons, c. 1955, label "Original Emilio Sportswear Capri, Italy", B 44", L 24.5", (scattered tiny spot stains, 0.75" missing top stitching right pocket, 1.75" seam opening right SS, light discoloration) very good. Museum at FIT.



16: TWO MISSONI WOOL KNIT COATS, ITALY, 1978 & 1984

USD 500 - 800

1 wool, alpaca & mohair blend double face knit w/ oversized rose motif, asymmetrical wrap front w/ large single forest green button closure, raglan sleeves w/ deep pocket inserted into seam, c. 1984, label "Missoni Made in Italy", B 54", L 47", (pilling, few pulls) very good; 1 wool black & grey checkerboard boucle, black asymmetrical ribbed knit wrap collar w/ tie closure & matching cuffs w/ thumb hole, deep H pockets, c. 1978, label "Missoni Made in Italy", B 46", L 47", (pulls, internal belt missing, tear in sleeve lining) excellent. Museum at FIT.



17: TWO PIECE MISSONI KNIT ENSEMBLE, ITALY, 1978

USD 400 - 600

2-pc wool multicolor chevron ensemble c/o batwing sweater w/ free front & patch H pockets, matching culottes w/ elastic W band, partial wrap over hidden pockets w/ tie closures over both Hs, c. 1978, label "Missoni Made in Italy" & "Made in Italy for Bonwit Teller, 100% Wool": sweater open B, L 41", culottes W 27"-32", L 26.5", inseam 14", (light pilling/pulls, culottes unlabeled) excellent. Museum at FIT.



18: TWO MISSONI BELTED DRESSES, ITALY, 1977 & 1979

USD 400 - 600

1 cerulean blue wool jersey w/ long raglan sleeves joining at CF & CB neckline to form shallow V-neck, slender cuff w/ single button, original blue & cream matta weave broad belt w/ lavender composite buckle, c. 1977, label "Missoni for Bloomingdales, Made in Italy 100% Wool", B 42", L 41.5", (buckle w/ light scratches, tiny-0.5" seam openings at hem, light underarm stains); 1 dove grey wool, rabbit hair & nylon blend jersey dress w/ V-neckline, full raglan sleeves & patch H pockets all edged w/ heather grey ribbed knit bands, original patterned knit matching belt, c. 1979, label "Missoni for Bloomingdales, Made in Italy", B 40"-46", W 31"-43", L 46", (minor pilling, light buckle wear, few tiny holes) both very good. Museum at FIT.

Annual Autumnal Elegance



19: TWO MISSONI CIRCULAR PONCHOS & SKIRT, ITALY, 1976 & 1979

USD 400 - 600

All silk, wool & synthetic blend: 2-pc set of seafoam green & muted multicolor in modified rib knit c/o circular poncho w/ deep standing cowl neck & scalloped hemline, matching knee-length skirt w/ & scalloped hemline, c. 1976, skirt label "Missoni, Made in Italy" & "Made in Italy for Bonwit Teller, 70% Wool, 25% Nylon, 5% Silk", SH-SH 19", L 28", skirt W 36", L 24", (poncho unlabeled, pulls, skirt elastic shot, W band altered); 1 black, white & muted multicolored modified herringbone rib knit blend poncho w/ contrasting black bands to edge of deep standing cowl neck & scalloped hemline, label "Missoni Made in Italy" & "Saks Fifth Avenue, 70% Wool, 25% Nylon, 5% Silk", SH-SH 19", L 30", (pulls) ponchos excellent, skirt good. Museum at FIT.



20: TWO MISSONI ENSEMBLES IN ALTERNATE COLORWAYS, ITALY, 1968 & 1981

USD 800 - 1,200

Both mohair & wool blend in raised rib knit w/ 4 button shirt collars, raglan long sleeves, free front w/ original tie belts, inset SS slit pockets & matching beanies: 1 in shades of maroon, green & grey c. 1981, label "Missoni, Maglia Knitwear Tricot, Made in Italy", open B 38", L 49.5", (pulls, minor pilling, light wear, knitting coming undone 1 belt end); 1 in shades of grey, blue & orange c. 1968, label "Missoni, Maglia Knitwear Tricot" & "Missoni for Bloomingdales", open B 38", L 42", (light wear/pilling, few pulls, label removed from hat) all very good- excellent. Museum at FIT.



21: TWO MISSONI PLAID WOOL COATS, ITALY, 1978-1983

USD 800 - 1,200

Both 100% wool & w/ labels "Missoni Made in Italy" & "Saks Fifth Avenue Potpourri, 100% Wool": 1 car coat primarily in shades of cream, purple, pink, blue & grey, asymmetrical wrap front w/ tie closure at base of standing collar, glove length sleeves & large patch H pockets, 1980-1983, B 46", L 34.5", (pilling, few pulls); 1 calf length primarily in shades of cream, red, brown, grey & purple w/ shirt collar, free front & large patch pockets over Hs, 1978-1979, B 42", L 46", (minor pilling, light wear) both excellent. Museum at FIT.



22: TWO IRENE THREE PIECE SKIRT SUITS, AMERICA, 1947-1952

USD 300 - 500

3-pc striped grey wool c/o jacket w/ notched collar, paired CF closures, turn back cuffs & broad H tabs, grey silk crepe wrap front blouse, matching skirt, label "Irene Exclusively for Bullocks-Wilshire" & "Irene! Neiman Marcus", B 40", W 31", L 23.5", blouse B 42", W 26", L 15.5"-22.5", skirt W 30", L 26", (few sm repairs & wear); 3-pc brown wool c/o jacket w/ black velvet collar into V at CB & under large lobbed tabs at front, velvet shaped cuffs, pilsner shaped inserted opening to pockets at B & extending into W, brown crepe blouse w/ asymmetrical closure & paired standing lobes on slvs, matching skirt, label "Irene", B 43", W 31", L 25, blouse B 39", W 32", L 22.5", skirt W 29", L 30", (stain bottom jckt, shirt hem modified) both very good.



23: TWO IRENE WOOL SKIRT SUITS, AMERICA, 1950-1955

USD 300 - 500

2-pc B&W wool houndstooth w/ bias cut neck opening continuing into CF & around hem, CF black composite button closures, piecing at H's to imitate pockets, matching skirt w/ CB slit, jacket lined w/ orange silk crepe c. 1952-1955, label "Irene Exclusively for Bullocks-Wilshire", B 38", W 31", L 24.5", skirt W 26", L 27.5", pristine; 1 black & brown wool blend w/ asymmetrical notched shawl collar continuing at right side into broad panel w/ 3 button closures, half turn back cuffs, CF button closures, lined w/ black silk crepe, matching skirt w/ CB slit & self modesty panel to lower quarter of integrated slip, 1950-1953, label "Irene Exclusively for Bonwit Teller", B 43.5", W 35", L 23", skirt W 31.5", L 27.5", (0.25" worn spot above hem) excellent.



24: FOUR BONNIE CASHIN SEPARATES, AMERICA, 1965-1974

USD 400 - 600

1 brown suede jacket w/ all over topstitching in broad grid, CF buckle closure, raccoon fur lining, c. 1967-1968, B 45", L 24.5", (0.25" tear top left pocket, tiny-0.25" spot stains, some fur crushed); 1 pair mustard leather capris w/ elasticized W & cuffs, deep inset SS pockets. C. 1972-1974, W 21"-36", L 27.5", inseam 18"; 1 cream knit novelty wool cardigan, white leather tabs w/ brass snap hook closures, label "A Bonnie Cashin Design, Sills & Co.", B 42", W 40", L 22.5", (light stains CF closures); 1 wool herringbone tweed A-line skirt w/ brown leather W band, CF panels w/ concealed brass snap closures & hem, brass dog leash hook & ring closure at left front W, c. 1965-1970, W 29", L 22.25", (all w/ light wear & metal tarnish) all good- very good.

Annual Autumnal Elegance



25: THREE BONNIE CASHIN SEPARATES, AMERICA, 1967-1972

USD 400 - 600

1 suede gilet w/ cutaway CF, shirt collar, 3 CF button closures & inset SS pockets, label "Sills A Bonnie Cashin Design", B 53", W 60", L 37", (light wear, 2" tear left SH, 1.25" & 1" tears right, spot stains, 0.5" hole collar where top button missing) fair; 1 lime green leather skirt w/ CF brass toggle closures, lined w/ rayon crepe c. 1967-1972, W 27", L 21", (metal tarnish, 1.5" light stains W band, 0.75" spot stain left H) very good; 1 wool blend plaid coat in shades of brown, grey, white & black w/brown suede edging to shirt collar, CF opening, tabbed breast pockets, slash H pockets, cuffs & hem, c. 1968-1972, B 48", W 46", L 41", (metal tarnish, suede trim worn, pilling) very good.



26: FOUR PIECE BONNIE CASHIN ENSEMBLE, AMERICA, 1960-1965

USD 400 - 600

All cream boucle w/ white leather edgings & brass toggle closures: 1 cream coat w/ leather collar, 4 CF closures & oversized double patch pockets from W to hem, B 43", W 48", L 36.5", 1 jacket w/ left side closure & tabbed pocket at right side, B 38", W 37", L 23", 1 mini wrap skirt w/ 2 toggle closures to W band & overlapping free front, W 26", L 22", 1 flared coat w/ 3 closures & inset crescent shaped SS pockets, B 50", W 52", L 37", (all w/ light wear & metal tarnish) all very good- excellent.



27: TWO UNGARO ENSEMBLES, PARIS, 1980s

USD 300 - 500

All w/ label "Ungaro Parallele Paris": 2-pc in black & brown silk & lame skirt suit c/o sculpted jacket w/ tie tack CF closures, strong SH, shaped standing H pockets, paired peekaboo Kelley green triangular panels below CF W, lined in silk, matching pencil skirt, B 37.5", W 28", L 25"-28.5", skirt W 24", L 21", (paint chipping on closures, pulls, light stain skirt lining); 2-pc ensemble c/o grey wool blend blouse w/ high collar, pleated imitation sash over right SH continuing to W front & back & concealing front closure & silvered leather miniskirt, B 36", W 28", L 23", skirt W 24.5", L 21.5", (1" light stain CF B, 2 tiny holes back SH, 2" cluster of stains skirt lining) all very good. Sam Houston State University.



28: THREE UNGARO SILK PARTY DRESSES, PARIS, 1980-1990s

USD 300 - 500

All w/ label "Emanuel Ungaro Parallele Paris": 1 faux wrap dress w/ tie at left H & asymmetrical knife pleated skirt of cream patterned silk in rose motif overprinted w/ sweeping marigold pigment, B 41", W 29", L 40", excellent; 1 turquoise patterned silk w/ black velvet collar, CF button closures, ruched side panels & lower sleeves, deep horizontal H pockets, flatlined w/ silk crepe, B 31", W 26", L 41", (scattered tiny-1" light spot stains, wear to cuff trim) very good; 1 white silk minidress w/ satin polkadots & printed w/ stylized pop art florals, single broad SH band pleated to right SS & extending to tie at left SH w/ back panel extension, B 32.5", W 25.5", L 30", (light stains back hemline) very good. Sam Houston State University.



29: BLASS, LACROIX & VERSACE LADIES SUITS, 1990s

USD 400 - 600

2-pc grey pinstripe wool twill pant suit w/ black composite Hermes button at CF, tabbed H pockets & cuffs, cuffed slacks, label "Gianni Versace Couture, Made in Italy", B 37", W 30", L 24", pant W 25.5", L 38.5", inseam 27.5", (few pulls, metal rings detaching); 2-pc wool & silk blend plum suit c/o blazer w/ applied ribbon to notched collar & lapel, stove pipe slacks, label "Christian Lacroix", tags attached, B 42", W 35.5", L 26", pant W 33", L 45.5", inseam 34", (tiny spot stains lapel, underarm stains); 3-pc tan sharkskin twill suit c/o blazer w/ notched collar & ext lapel w/ button hole, tabbed H pockets, cuffed slacks & skirt, label "Bill Blass", B 40.5", W 36.5", L 31", skirt W 28", L 23", pant 28.5", L 44", inseam 31.5", all v good-excellent. Sam Houston State University.



30: CHRISTIAN LACROIX PARTY DRESS, PARIS, LATE 1980s

USD 500 - 800

Summer party dress of resist dyed & printed cotton w/ floral, fleur-de-lis & border motifs on black ground, fitted bodice w/ molded cups & deep CF keyhole below CF crossing SH straps, back lacing bodice w/ oversized rhinestoned grommets, poof skirt pleated to CF & CB W, label "Christian Lacroix, Paris?", B 32.5", W 27", L 35", excellent. Sam Houston State University.

Annual Autumnal Elegance



31: THREE PIECE COURREGES ENSEMBLE, PARIS, 1960s

USD 600 - 1,200

3-pc pale pink cotton & twill corduroy interchangeable ensemble c/o jacket w/ convertible collar & back W both w/ buttons tabs, CF button closures & shallow slash pockets in W band, high waisted corduroy trousers w/ diagonal pockets from W band to SS w/ triangular fold over button tab accents, high W skirt w/ twill cotton yoke & CF button closures, all w/ label "Courreges Paris, Made in France": jacket B 44.5", L 22", pant W 25", L 40", inseam 29.5", skirt W 24", L 28.25", (few small stains, 0.5" & 2.5" stains right cuff, light discoloration to lining, hanger imprints on pant, minor crushing left knee, inside of skirt hem dirty) very good. Sam Houston State University.



32: TWO THIERRY MUGLER SUITS, PARIS, 1980s

USD 400 - 600

All w/ label "Thierry Mugler Paris, Made in France": 1 pale green rayon blend skirt suit c/o fitted faux double breasted jacket w/ self covered decorative buttons over snap closures, original removable lace B insert & matching pencil skirt, B 38", W 26", L 22", skirt W 25.5", L 20.5", (underarm stains, few tiny-3" stains, 0.5" tear lace insert, 1" tear left SS, paint on zip chipping) good; 1 tan wool pant suit c/o fitted jacket w/ characteristic reverse notched collar, pieced W line, 2 CF self-covered button closures, diagonal H pockets & silk lining, matching trousers w/ H pockets still stitched shut, B 34", W 29", L 29", pant W 26", L 41.25", inseam 29", (spot stains, tiny pulls CF W, hanger imprint on pant, right pant hem falling) very good. SHSU.



33: MUGLER COUTURE JACKET & PARTY DRESS, PARIS, 1980s

USD 500 - 800

1 grey wool jacket w/ tapered scarlet leather trim to collar, CF opening & along symmetrical zigzag piecing at bodice front & H pockets, label "Thierry Mugler Couture", B 38.5", W 28.5", L 25"-27", excellent; 1 white rayon knee length sheath dress w/ orange SH straps continuing across front right & into loop at left back side, label "Thierry Mugler Paris, Made in France", unstretched B 30", W 24", L 40", (light stains & pilling, few undone stitches CF B) very good. Sam Houston State University.



34: MUGLER & GENNY SUMMER DRESSES, PARIS & ITALY, 1980-1990s

USD 300 - 500

1 lavender rayon dress w/ slender SH straps, tapered fold over sweetheart neckline, 2 self covered CB buttons & zip closure, polyester lining label "Thierry Mugler Paris", B 33.5", W 27", L 37", (light stains throughout) good; 1 green cotton minidress w/ broad SH straps & empire W band w/ rows of decorative topstitching, label "Genny, Made in Italy", B 32", W 28.5", L 34", (1" light stain seat, 0.5" spot stain CF B lining) very good. Sam Houston State University.



35: CHANEL ROMPER STYLE MINIDRESS, PARIS, 1990s

USD 400 - 600

Black silk dress w/ broad SH straps, straight neckline w/ 2 floral buttons at CB w/ ?Chanel? stamp, knife pleats let out into school girl skirt, label "Chanel Boutique", B 35", W 34", L 35", (stitches undone back right SH strap, 4" seam opening right W, pockets added) good. Sam Houston State University.



36: OSCAR DE LA RENTA THREE PIECE ENSEMBLE, AMERICA, 1990s

USD 300 - 500

2-pc ensemble c/o printed silk satin sleeveless minidress w/ front scoop neckline into cross over V neckline at back, silk satin lining matching voluminous silk organza long sleeved jacket & original matching silk satin covered belt, label "Oscar de la Renta", jacket open B 82", W 70.5", L 37", dress B 36.5", W 26", L 35", (0.75" seam opening left dress hem, zip paint chipped, 2.75" x 1" light stain CF B, pull at lap) all very good. Sam Houston State University.

Annual Autumnal Elegance



37: CHANEL THREE PIECE ENSEMBLE, FRANCE, 1980s

USD 500 - 800

3-pc ensemble c/o pale pink silk organza button down w/ dramatic bishop sleeve & fitted cuff w/ 4 leaf clover motif buttons, matching camisole & necktie, high waisted charcoal grey pinstripe wool trousers w/ quilted double flap Chanel bag motif & Chanel stamp on reverse, all w/ label "Chanel", shirt B 39", L 25", camisole B 37.5", L 23", trouser W 25", L 41", inseam 29.5", (2 tiny stains shirt label, 0.5" pen mark left collar, tiny-1" light stains camisole B) all excellent. Sam Houston State University.



38: CHANEL SWEATER DRESS, PARIS, 1990s

USD 400 - 600

Scarlet knit dress w/ turtle neck, long sleeve w/ zip from wrist to below elbow w/ Chanel logo pull, large patch pockets over front Hs w/ gold tone buttons in chain motif stamped "Chanel, Paris", CB two way zip closure from top & bottom for back kick, label "Chanel Boutique", unstretched B 34", W 27", L 40", (2 tiny repairs at left SH, minor pilling upper CH) very good. Sam Houston State University.



39: FOUR YSL SEPARATES, FRANCE, 1980s

USD 400 - 600

All w/ label "Saint Laurent Rive Gauche, Made in France": 1 multicolored printed silk blouse in shades of blue, green, red & brown w/ tie at CF, B 38", L 24"-25.5", excellent; 1 green silk velveteen jacket w/ self tie belt, B 44", L 23.5"-26", (fabric info tag cut out, sm seam opening in belt) excellent; 1 green suede pencil skirt w/ horizontal front H pockets, W 24", L 22.25", (fading, hanger imprints, size & fabric tag cut out) very good; 1 blue printed silk blouse in paint brush stroke motif w/ CF tie, B 40", W 24.5", (underarm stains, two 0.25" spot stains CF, light wear) good. Sam Houston State University.



40: THREE DESIGNER SKIRT SUITS, FRANCE, 1980-1990s

USD 300 - 500

1 mint green leather w/ strong SH, 1/2 belt closure at sides & crossing at CB, skirt w/ shaped W band & body con piecing, label "Jean Claude Jitrois Paris, Made in France? & #?15973? & ?14472", B 40", W 28", L 22.5", skirt W 24", L 19", (tiny-3" stains, hanger imprints) good; 1 wool & silk blend c/o cream jacket w/ navy trim & single button closure to geometric overlapping front panel, matching skirt in navy & cream novelty grid weave, label "Lanvin Paris, Made in France", B 36", W 31", L 21-25", skirt W 22.5", L 26", (light stains lining) excellent; 1 brown wool w/ leather reverses, buttons & cuffs, matching miniskirt, label "Jiki Monte-Carlo Creations", B 36", W 26", L 23.5", skirt W 25", L 19.5". (tiny-2" stains) very good. Sam Houston State University.



41: THREE DESIGNER ENSEMBLES, AMERICA, 1980-1990s

USD 300 - 500

3-pc diamond quilted c/o jacket w/ CF hook & eye closures, matching wide belt & skirt w/ silk lining, label "Fe Zandi", B 34", W 29", L 24", skirt W 26", L 19.75", (light wear); 1 demi couture wool knit dress w/ black body & grey sleeves & back in imitation illusion neckline w/ nail heads, label "Bob Mackie", unstretched B 32", W 25", L 38", (modifications to sleeves w/ visible basting stitches & wrist zip partially detached on right sleeve); 2-pc ensemble of leather & wool knit c/o jacket w/ logo zips & calf length knit skirt w/ thigh high slit, label "Donna Karan New York", B 37", W 27.75", L 26", skirt W 24", H 34", L 34", (6.5" repair jacket lining SS, light hanger imprints skirt, tiny pulls) all good- very good. Sam Houston State University.



42: GIANNI VERSACE COUTURE BUSTIER & SKIRT, ITALY, EARLY-MID 1990s

USD 400 - 600

1 pale pink silk blend bustier top w/ decorative top stitching & boning, SS 1995 label "Gianni Versace Couture, Made in Italy", B 33.5", hem circ. 27", L 15.75"-17.5", (fiber info tag cut out, 0.25" light stain hem) excellent; 1 scarlet wool miniskirt w/ crepe binding to SS & continuing around slightly scalloped hemline, label "Gianni Versace Couture, Made in Italy", W 24.75", H 35.5", L 19.5", (very light 1" stain seat, few tiny pulls, fiber info tag cut out) very good. Sam Houston State University.

Annual Autumnal Elegance



43: JAMES GALANOS WOOL JUMPSUIT ENSEMBLE, AMERICA, c. 1985

USD 400 - 600

3-pc dark grey checked wool ensemble c/o long sleeved jumpsuit w/ band collar, CB closure & faux agate buttons to sleeves, calf length faux double breasted over-vest w/ matching buttons, & original suede belt w/ leather edging, label "Galanos" & "Neiman Marcus", sleeveless coat SH-SH 12", W 36", L 39.5", jumpsuit B 40", W 36.5", L 58.5", inseam 29", (light wear, 0.5" tear back right jumpsuit underarm) vest excellent, jumpsuit very good. Sam Houston State University.



44: GIANNI VERSACE MINIDRESS W/ TAGS, ITALY, EARLY 1990s

USD 400 - 600

Deadstock geometric print wool minidress in shades of purple, blue, green & black w/ CB zip closure, silk lining & original tag attached, label "Gianni Versace", B 36", W 27", L 34", pristine. Sam Houston State University.



45: CLAUDE MONTANA BIKER JACKET, FRANCE, 1980s

USD 300 - 500

Black leather biker jacket w/ convertible shawl collar, deep fringe across SHs & back w/ V at CB, zippered diagonal B & vertical SS pockets w/ stud accents, free front, snap closures at wrist, label "Claude Montana pour ideal cuir, Made in Paris France", B 52", SH-SH 19", L 28.5", (light general wear, wear to collar, metal tarnished) very good.



46: EMBROIDERED COTTON MULL EVENING DRESS, 1840s

USD 500 - 800

White cotton mull evening dress hand embroidered w/ tambour & French knots in flowers & V shaped W line, finely piped neckline w/ narrow standing ruffle, armhole, cuffs & W, CB closure, full skirt finely pleated to W, single tuck above hem, B 30", W 23", L 52"-54", (tiny-7" stains throughout, 6" & 1.25" stabilizing patch repairs front hem, 1" tear to hem) good. Ohio State Historic Costumes & Textiles Collection.



47: WOOL CHALLIS WRAPPER, LATE 1850s

USD 500 - 800

Printed wool challis w/ nosegay & fern motif on forest green ground, printed challis borders in modified diamond motifs around neckline, down CF opening, SHs & bell sleeves, armhole & W, bodice & sleeves lined in cotton, B 35", W 24.75", L 58"-61", (stained/worn underarms, 1" & 4" seam openings W, few scattered tiny- 0.25" holes, 1"-2.5" tears & repairs hem, W & lap, W modified at CF to make smaller w/ all material present) very good.



48: SILK TAFFETA DAY DRESS, c. 1859

USD 500 - 800

Silk taffeta day dress in grey printed stylized in ikat w/ vertical blue stripes & black & white checkerboard overstripes & white horizontal bands, silk plaid dress w/ narrow standing band collar, CF self-covered button closures, 2-pc military shaped sleeves, piped armhole & W, box pleated skirt w/ cartridge pleating at CB, glazed linen lining, B 37", W 28.5", L 52.5", (stained underarms, wear to buttons/holes, tiny-0.5" holes, 1"-2" seam openings W line, heavy wear to hem saver, tiny-0.25" wear spots throughout, line of heavier wear across skirt) fair.



49: SILK FAILLE BALLGOWN, c. 1870

USD 300 - 500

2-pc silk faille gown in shades of ecru w/ ecru, yellow & celadon silk velvet bows, bands & florals, bateau neckline, CF self-covered buttons, extended pleated back peplum w/ self bow, trained skirt, B 33.5", W 20.5", L 12"-19.5", skirt W 22", L 42"-61", (missing overskirt, discoloration, SH ruffle partially detached left side, minor shattering, 3" seam opening at bone left side, 5.5" opening/tear right, neckline tie tearing from casing, 2 of 6 internal skirt gathers missing, tiny-0.5" seam openings hem) poor. Ohio State Historic Costumes & Textiles Collection.

Annual Autumnal Elegance



50: SILK TAFFETA & DAMASK VISITING GOWN, c. 1879

USD 1,200 - 1,500

Brown silk taffeta & triangular damask patterned silk princess line trained visiting dress & matching short coat w/ velvet & silk tassels at hem, both pieces piped throughout & w/ thread covered & embroidered buttons, double faced satin ribbon, lined in glazed cotton, coat B 38.5", L 37", gown B 37.5", W 29.5", L 58.5"-75.5", (2 detached buttons on coat, shattering SHs & sleeves, tacks undone back W panel, inking inside SHs, minor shattering dress sleeves, few detached buttons & tassels, cracked bones in bodice, something removed in W w/ stitches remaining, spot stains) both good. From the Collection of A.T. Jones & Sons.



51: TWO SILK DAY DRESSES, 1880s

USD 500 - 800

3-pc grey silk taffeta visiting gown c/o cuirass bodice w/ flared collar, CF button closures, rows of knife pleated ruffles at cuff & under Van Dyke at CB, overskirt w/ double apron draped front & Polonaise back, trained underskirt, glazed cotton lining, wool hem saver, c. 1880, B 36", W 22.25", L 24", underskirt W 24", L 40.5-55.5", overskirt W 24", L 38-45.5", (underarms stained & shattering, W & cuffs shattering, tiny-2.5" holes/stains, bones poking, 15" tear skirt W band); 2-pc finely ribbed silk w/ voided velvet on patterned ground in early 17th C style motif, box pleated satin ruffles, buckram ruffle & skirt lining, B 36", W 24", L 15.5-20", skirt W 26", L 39.5-60" (underslvs added, shattering, 1/2 underbodice missing) both fair. A.T. Jones & Sons.



52: MAROON SILK VELVET & SATIN DINNER DRESS, c. 1892

USD 800 - 1,500

2-pc maroon silk velvet & twill silk satin dress c/o bodice w/ shirt collar, asymmetrical pleated front wrap under fans bolero w/ leg o' mutton sleeves, skirt w/ straight panels pleated & manipulated into W, applied velvet godets at front of skirt, lined w/ silk satin, skirt of silk satin twill, w/ cisele velvet corselet, B 36.5", W 24", L 15.5", skirt W 24", L 44.5", (3" repair left sleeve, velvet trim back bodice hem detaching, wear to seams, 1" seam opening left collar, 1" cluster stain right cuff, skirt hemline worn, few scattered tiny-0.25" holes) very good.



53: BROCADE & SILK VELVET DINNER GOWN, c. 1893

USD 800 - 1,200

Rose colored silk satin dinner gown brocaded in cream, yellow & gold blossom motif, collar, front insert & back overlay w/ faceted metallic beads, cuff flounce & jabot of chemical lace, silk velvet leg o' mutton upper sleeves, CF plastron & CB bow, trained skirt w/ hanging tabs at front to reveal twill silk satin underdress w/ silver lame tulle overlay & knotted lame fringe, skirt lined in fine cotton buckram, B 35", W 24.5", L 16", skirt W 26.5", L 40"-57", (minor crushing/wear to velvet, discoloration, pulls, bones poking out interior, tarnish to metallic net, 4.5" undone pleating CB skirt W, tiny spot stains, hem fading) good- very good.



54: TWO DAY DRESSES, LATE 1890s

USD 400 - 600

2-pc cream patterned wool dress w/ silk crepe gathered front & back bodice overlay & cuff ruffles, silk satin broad ribbon at CF & pleated over W, fitted sleeve w/ SH puff, gored skirt w/ deep pleat at CB, flat lined in linen, c. 1898, B 32.5", W 23", L 16", skirt W 24.5", L 45", (stains throughout esp. to skirt, wear to sheer overlay at underarms, W band worn) good; 2-pc blue & white striped printed cotton organdy day dress w/ 2-pc sleeve w/ bodice gathered at CF & CB, fitted lower sleeve w/ fullerback panel gathered into front straight piece & puffed SH cap, 2 bias cut narrow hem flounces, gathered linen lining, skirt W 26", L 40.5"-45", (few scattered tiny-0.5 holes, light spot stains, wear to hem) very good. Sam Houston State University.



55: SILK SUMMER GOWN, 1900-1905

USD 400 - 600

2-pc cream silk dress w/ pale yellow twill silk satin ribbon stripe, bodice w/ cotton machine lace yoke & long sleeves w/ ruffled cuff, manipulated bow at left corsage, double silk organza flounce to yoke & over trained skirt w/ bias silk satin edging, lined in cotton, B 37.5", W 26", L 16.5", skirt W 26", L 40"-48", (2" hole back left SH, 3" seam openings right sleeve & right B, 1" x 0.5" repair left B, 2.5" seam opening right sleeve, shattering underarms, light stains, 2" stabilization strip to skirt W, hemline worn, tiny-0.25" holes throughout) fair. Sam Houston State University.

Annual Autumnal Elegance



56: THREE PIECE WEDDING GOWN, c. 1895

USD 500 - 800

3-pc horizontal ribbed silk gown, high stock collar w/ standing ruffle at CB, side bows, wax filled pearls, fine crystal seed beads & silk ribbon, all also at W band, back of elbow & elongated front falls on skirt, leg o? mutton sleeve, skirt w/cotton velveteen hem facing, buckram hem stiffening, B 34", W 21.5", L 17", skirt W 21.5", L 39", (8" seam opening CB collar ruffle, tack undone left sleeve swag, wear/missing beaded tassels, tiny-0.75" spot stains, 1.75" stain left B, tiny- 0.5" holes& shatter spots, minor shattering & light stains bodice & skirt hem, 0.75" tear to interior CB closures) good. From the Collection of A.T. Jones & Sons.



57: EMBROIDERED WOOL TEA GOWN, c. 1889

USD 800 - 1,200

Blue wool serge tea gown hand embroidered in white silk floss, stock collar, fitted bodice, inserted full sleeve puff at SH, CF opening w/ hook & eye closures below W, smocked at CB, lined in glazed cotton, wool hemsaver, most likely embroidered in India, B 40", W 31.5", L 56.5"-64", (stained/worn underarms, 2" & 0.5" seam openings at underarms, stains to hem & collar, wear to embroidery, 0.5" hole knee, scattered pinholes & light spot stains, CF buttons removed) good.



58: SUMMER HOUSEDRESS & NIGHTGOWN, LATE 1870s-EARLY 1880s

USD 300 - 500

1 white cotton nightgown w/ decorative openwork joining chevron arranged alternating bands of Heileman embroidery & rows of tucks, CF closure to deep gathered hem flounce, B 44", W 45", L 55", (scattered tiny-0.25 holes, 0.5" hole left front SH, 1 button missing, repairs to hem); 1 white cotton dimity Princess line summer housedress w/ soutache, CF MOP button closure, embroidered net collar & cuffs, let-out double box pleats at seat, c. 1880, B 34", W 26.5", L 54"-59", (tiny-0.5" spot stains, 0.5" hole right knee, 1" cluster small holes at back knee) both very good.



59: TWO COTTON WRAPPERS, 1880-1890s

USD 300 - 500

1 slightly trained cream cotton wrapper w/ inset ruched bands, Heileman embroidery, fold over collar & deep cuffs, MOP CF button closures & CB W tie, B 38", W 38", L 53.5"-62.5", (many 0.25"-1" repairs, 2.5" x 1.5" tear right SH w/ staining, tiny-0.5" holes & spot stains); 1 white printed cotton house wrapper w/ brown dot motif, applied bands printed w/ square spots in diamond motif at neck opening, yoke, CF, W & above broad hem ruffle, Schifflli embroidered inserted cotton mullbands above cuff, B 44.5", W 29", L 55.5", (stained hemline, fading at SHs & collar, 1" & 2" patch repairs back W, light stains) both fair- good. Sam Houston State University.



60: FOUR BOUDOIR GARMENTS, 1890s & 1920s

USD 300 - 500

Three from same trousseau w/ ?MEL? monogram, Schifflli embroidered daisy motif & mm lace SH ruffles, 1890s: 1 short cotton nightdress w/ narrow ribbon insertion at neckline, B 42", L 44", (tiny spot stains, few small holes, 0.5"-1.5" seam openings onSS?s), 1 long cotton nightdress w/ ribbon panaches, B 60", L 59", (tiny-0.5" spot stains & holes, minor discoloration to ribbon w/ shattering, wrist ribbons replaced) & 1 pair cotton split drawers w/ ribbon panache at SS, W 14.5"-47", L 25", (tiny-1.25" stains); 1 silk crepe w/ lace inserts & pink ribbon panaches & rosettes, 1920s, B 42", L 50", (light spot stains, 25" light stain CB skirt, few pulls) all good-very good. Sam Houston State University.



61: COTTON PIQUE BOUDOIR GOWN, 1880s

USD 400 - 600

Aesthetic movement influenced boudoir gown in white cotton pique w/ mm lace ruffles to collar, down CF, at cuffs & hem, CF button closure to W, left H pocket, stylized plis Watteau into broad train, B 40", W 36", L 56"-75", (tiny pulls, minor fraying, few undone tacks, few scattered tiny light spot stains, minor discoloration at hem) excellent.

Annual Autumnal Elegance



62: TWO SILK OR LINEN DAY DRESSES, 1906-1910

USD 400 - 600

Both monobosom: 1 linen dress w/ lame & multicolor embroidered net stock collar, yoke, CF insert, & lower sleeves, Corelli machine applied silk cording, black silk W band & edgings, c. 1906, B 42", W 26", L 58", (1" tear W seam, boning in collar warped & broken, tiny-0.5" holes, broad light fading, wear to embroidery, modified at CF hem, 3" torn seam right underarm, shattering collar & cuff lining) fair; 1 black silk satin dress w/ soutache & machine knitted lace stock collar & bib insertion, & applied to cuff of 3/4 length sleeves, Turks head knot drops accents, c. 1910, B 35", W 25", L 52", (broad fading, few tiny holes/tears, few missing closures, cord trim worn, 1" repair CF) good. Sam Houston State University.



63: TWO COTTON DAY DRESSES, c. 1910

USD 400 - 600

1 cream cotton poplin day dress w/ soutache applique & yellow ombre hand embroidery, yoke, standing collar & sleeve insertion of net w/ chemical lace applique, decorative & functional self & soutache covered buttons, B 42", W 27", L 51.5", (light discoloration, tiny-1" spot stains, shattering collar edging, few missing closures, CB & skirt SS's altered, 3" CB cording seam opening, few small holes) very good; 1 white cotton batiste dress w/ machine lace yoke & sleeves, B 42", W 25", L 55", (few tiny-0.5" spot stains, 3 0.5" holes, 3" wide band of stains left sleeve, 2.25" stain back right sleeve) good. Sam Houston State University.



64: LABELED SILK CREPE EVENING DRESS, NEW YORK, c. 1914

USD 400 - 600

Black silk crepe dress w/ silk crepe chiffon insertions & sleeves, faceted & short bugle French jet beaded W cincher, skirt lined in black china silk, label "Grande Maison de Blanc, 308 Fifth Ave, New York", B 34", W 27", L 59", (few loose beads on buckle, beginnings of bead disease, few pulls, few tiny-0.25" light spot stains, 0.5" seam opening at sheer panel left SS) excellent.



65: SOUTACHE EMBROIDERED NET OVERDRESS, c. 1911

USD 500 - 800

Cream cotton net dress heavily embroidered w/ soutache, net under blouse w/ horizontally tucked sleeves & vertically tucked across B, looped soutache flower bud buttons as centers of floral motif, open from W to asymmetrical hem at CF, B 32", W 25", L 47"-55", (slip N/I, scattered tiny-0.25" spot stains, 0.75" spot stain at B, tiny-0.25" holes from broken brides in skirt, 0.75" hole CF above W) very good-excellent.



66: SEQUINED & BEADED SILK TULLE EVENING DRESS, c. 1912

USD 300 - 500

Black silk tulle evening dress w/ decorative sequin & jet bead bands forming faux front plastron & to sleeve cuffs, broad W band & on skirt to form illusion side slit w/ self bow, lined in silk satin, B 33", W 23", L 53", (neckline tulle worn, minor bead/sequin loss, bead disease, shattering underdress & overdress around SHs & hem, wear to bows) fair.



67: SILK CREPE & BOBBIN TRAINED TEA DRESS, c. 1908

USD 500 - 800

Cream silk crepe back satin & crepe trained tea dress w/ lace stock collar, net & ruched yoke, deep bobbin & tape lace flounce, cream silk stain W tie w/ elongated tails into asymmetrical back drape, vertical & horizontal tucks to slightly trained skirt, B 52", W 28.5", L 60"-70", (missing & detached CB closures, neck boning poking out, edging at collar & sleeves worn, broken brides, 2.75" seam opening right SH & 0.5" CF collar, discoloration/spot stains hem, few scattered tiny-0.25" holes) good.



68: SATIN & CHEMICAL LACE WEDDING DRESS & SHOULDER TRAIN, c. 1926

USD 500 - 800

Crepe back satin wedding dress w/ short cap sleeves, broad skirt band to drop W & square SH train of chemical lace wedding dress, ruched turban style headpiece w/ lace crown, B 34.5", L 46", SH train Wd 21"-25", L 122", (headpiece damaged, scuffs/light stains to B, stains right underarm, broad band staining across seat & right H, few 0.25" stains back, tiny pulls to train, discoloration) dress & train very good, headpiece as is.

Annual Autumnal Elegance



69: TWO CHIFFON DAY DRESSES, 1920s

USD 400 - 600

1 printed orange silk chiffon w/ cream knitted lace in overall grid motif of cord edged rectangles & squares w/ patterned openings on knitted ground to yoke, below W & at hem, silk velvet ribbon & lame cord trim to W, B 36", W 34", L 36", (slip N/I, many pulls, tarnish to lame at W, minor edge fraying, 0.75" hole in lace CF hem) good; 1 navy ribbed crepe silk chiffon day dress w/ wide gathered & ruched collar w/ self fringe, faux cummerbund drop W band w/ attached ruched asymmetrical skirt, self-cords w/ decorative drops at CF & W, B 36", W 34", L 40.5"-46", (missing caps on tassels, many tiny-0.75" holes at CF hem, tiny-1" light stains on yoke) good.



70: TWO CHIFFON & LACE EVENING DRESSES, 1920s

USD 400 - 600

1 cream silk chiffon, scoop neckline w/ silk blend mm lace yoke into deep V-shaped insertion CF & CB & as gores in skirt w/ extended tab at CF, B 45", W 37", L 47", (slip N/I, underarm stains w/ minor shattering, broken brides, 0.25"-0.75" holes SHs, belt missing, light fraying hem, 0.75" hole lap) good; 1 black silk chiffon w/ linen & silk Chantilly lace insertions, ruffles, yoke, sleeves & hem, B 40", W 40", L 43", (slip N/I, lace edges fraying, scattered pulls & few tiny holes in body, scattered tiny-0.25" holes in lace) very good.



71: TWO SILK PARTY DRESSES, 1920-1930s

USD 400 - 600

1 black silk satin w/ sleeveless bodice & draped W band, black silk velvet overskirt w/ deep peekaboo opening at left side to reveal lame woven on open net ground over silk crepe appliqués side panel & as appliqué to left of bodice, B 44", W 41", L 40", (lame overlay tarnished w/ many holes from broken brides, few minor areas of crushing); 1 silk lame party dress in serpentine rib weave, maroon draped bodice w/ pleats over SHs for shaping & peekaboo back w/ self-covered button closures, blue attached skirt & bi-color attached belt w/ CF snap closure, B 47", W 36", L 44", (pulling & wear neckline & CB closures/opening at SHs, light tarnish throughout, 12" tarnish spot seat) both very good.



72: VOIDED VELVET & LAME EMBROIDERED PARTY DRESSES, 1920s

USD 400 - 600

1 navy silk crepe chiffon w/ bodice of devore silk velvet on tangerine ground & as appliqué to sleeve cuffs, B 38", W 38", L 40", (many tiny-1" holes to sleeves, stained underarms, stains & scattered tiny-0.25" holes to skirt, wear neckline & cuffs, 0.25" tear CF neck); 1 powder blue cord & lame embroidered silk net in interlocking zigzag motif w/ lame lace asymmetrical hem & ruffle below left H, B 34", W 34", L 40", (many 0.5"-6.5" holes armholes & SHs, 1.25" hole right H, many tiny-1.5" holes in lame lace, tarnish, stained underarms, broken brides) both fair.



73: SILK CREPE PARTY DRESS, MID 1920s

USD 400 - 600

Pink silk crepe party dress w/ silvered & opalescent seed beads & rhinestones in stylized trefoil floral motifs & swags, circular draped skirt w/ double row of rhinestones to scalloped hem, B 42", L 42", (slip N/I, large light tide marks right side of lap, tiny-large light stains, 0.5" hole right SH, minor bead loss, tulle bow later addition, SSs altered at Hs w/ all material present) very good.



74: MEZO AMERICAN INSPIRED BEADED PARTY DRESS, c. 1920s

USD 500 - 800

Cream silk georgette dress w/ Mezo American inspired Luneville geometric crystal beading throughout, draped bodice, narrow self-waistband w/ draped side panels gathered & ruffled at Hs to suggest robe de style, B 40", W 30", L 42", (self slip badly shattering w/ skirt missing, hem taken up, bead loss, cluster of tiny-0.75" holes at left front SH, tiny-0.75" stains at left H, 2.5" line & tiny spot stains at front left sash, undone pleating bottom left H sash) very good.

Annual Autumnal Elegance



75: BEAD ENCRUSTED EVENING TABARD, 1920s

USD 800 - 1,200

Luneville embroidered evening tabard w/ short bugle & seed beads on net w/ silk bead encrusted crescent shaped H panels, L 47.5", (very minor bead loss, 0.25"-0.75" holes in both SH straps, 1.25" hole lap, scattered tiny-0.5" holes esp near hem) good.



76: TAMBOUR EMBROIDERED BOUDOIR COVERUP, 1920-1930s

USD 500 - 800

Baby blue silk crepe t-shaped coverup w/ hand embroidered tambour butterfly, floral & tassel motifs, decorative crochet edging to neckline, sleeves & CF & used at top SH seam, most likely Mediterranean or North African, B 41", W 40.5", L 35", (2" seam opening left SH, light stains, few pulls to tambour & crochet, 0.25" hole back right hem) very good.



77: TWO CHIFFON EVENING GARMENTS, 1930s

USD 500 - 800

1 sleeveless chartreuse crepe chiffon evening dress w/ lame embroidery to deep V neckline at CF & scoop neckline at CB, shaped W yoke w/ ruched & gather attached skirt heavily embellished w/ lame embroidered geometric satin, crepe & velvet appliqués, B 38", W 29", L 50", (lame tarnish, scattered tiny-sm stains & a few 1.75-3" stains in skirt, scattered tiny-0.5" holes) good; 1 black silk crepe georgette evening jacket w/ dramatic square shawl collar of resist printed crepechiffon in autumnal leaf motif, L 28"-35", SH-SH 19", (few tiny holes, small-1.25" stains, 2.75" band of fading back right panel, few pulls) very good. From the Collection of A.T. Jones & Sons.



78: BLACK LACE EVENING DRESS, 1930s

USD 800 - 1,200

Black mm lace w/ red silk velvet & taffeta florals to CF at draped scoop neckline, shallow V neckline at CB w/ small keyhole, B panels gathered to slightly flared vertical CF panel for shaping over bodice & continuing into deep hemfounce for fullness in skirt, B 40", W 30", L 57", (minor fraying to faux flowers & edges, 1.5" hole back left hem, few broken brides) excellent.



79: LAME EVENING GOWN & MATCHING CAPELET, c. 1932

USD 800 - 1,200

Evening gown & shoulder capelet of puffed & ribbed modified damask weave silk in floral motif on silver lame ground, gown w/ wide SH straps gathered to rhinestoned lame mesh band & continuing into ruched pleated sections at either side of flatpieced vertical shield shaped panel at CF neckline w/ layered hanging self-petals, elaborately pieced CB V-neckline, gathering at either side above back W w/ flat half bow over inserted vertical panel w/ let out knife pleats front & back for fullness in skirt, matching SH capelet w/ hook & loop at either side of front neckline, B 43", W 32", L 58", (light underarm stains/wear, 1 stone missing left SH strap, few pulls, tarnish) excellent.



80: LABELED SILK PONGEE MOTORING DUSTER, ENGLAND, c. 1908

USD 400 - 600

Cream silk pongee duster w/ silk velvet ribbon trim & pearl cotton hand embroidery & metallic bullion tassels to collar, elongated front tabs, decorative patch pocket buttons, cuffs & oversized CF button closures, label "J. Mandelberg Co. Limited, Manchester, London & Paris", B 40", W 34", L 50", (button loops worn, shattering to lining at neckline, 1.5" seam opening right collar & 1" at left, hem dirty, few scattered tiny-0.5" spot stains, 1" stain CB W, light discoloration cuffs) good. From the Collection of A.T. Jones & Sons.



81: TWO WOOL OR CASHMERE COATS, AMERICA, 1910s

USD 400 - 600

1 cranberry cashmere blend w/ black satin front shawl collar & deep cuffs both w/ corded passementerie appliqué, row of decorative buttons w/ corded faux button holes along either SS, cotton flannel interlining, label "Lord & Taylor", B 42", L 53", (lining mostly missing, black satin shattering, tiny holes, 11" of seam openings CB neck & openings at cuffs, 3 missing buttons); 1 cream wool w/ manipulated black silk velvet panaches at CF neckline, graduated black silk velvet ribbon to CF, neckline, bell sleeves & tiered skirt, quilted silk satin lining, B 38", L 50", (tiny-0.5" wear spots/snacks, tiny holes & spot stains, pilling at lap, lining shattered, trim worn, 0.75" hole seat, two 0.75" stains right sleeve) both good. Collection of A.T. Jones & Sons.

Annual Autumnal Elegance



82: TWO BLACK VELVET OR SATIN COATS, 1910s

USD 300 - 500

1 black velvet w/ draped gathered pelerine collar, sleeves w/ horizontal rows of let out tucks, 2 CF self-covered button closures, lined in cream crepe black satin, B 40", L 53", (lining shredded, minor velvet crushing) very good; 1 black silk satin cocoon coat w/ piped oversized yoke, dolman sleeves & ribbed silk blend lining printed w/ rose lattice motif, B 66", L 45", (discoloration & shattering neckline lining, shattering to CF collar & upper CH, pulls, tiny stains, 0.5" seam opening left SH) fair. From the Collection of A.T. Jones & Sons.



83: SOUTACHE EMBELLISHED BROADCLOTH COAT, 1910s

USD 800 - 1,200

1 mauve rose broadcloth coat w/ peach & black soutache cord in scrolling floral motifs to collar, neckline, down CF, cuffs & broad attached SH capelet w/ CF tabbed closure & deep cut-away tails CF & CB, lined in half silk, B 44", L 53", (lining shattering, trim detaching, 6" cluster of stains left hem, discoloration above hem where altered, fading, few tiny-small holes/snacks w/ cluster at H) very good. From the Collection of A.T. Jones & Sons.



84: TWO SILK EVENING COATS, 1930s

USD 400 - 600

1 gold lame silk evening coat in dense bamboo foliate motif w/ goller (academic gown) pleated asymmetrical Pierrot collar, silk satin lining, 2 large CF self-covered buttons, c. 1930, B 38", W 32", L 51", (light 15" stain left CF, lining shattering, collar worn, tiny pulls/wear spots to lame, tiny-1" light stains) good; 1 black silk velvet coat w/ yoke panel continuing into CB stationary tie w/ asymmetrical drape & stylized Chaucerian sleeve w/ full back ruched into narrow front panel, silk crepe lining, label "Harzfeld's Kansas City", L 43", (lining discolored & shattering, minor crushing, tiny-0.25" snacks & holes back hem) very good. Sam Houston State University.



85: CHINOISERIE LAME EVENING CLOAK, c. 1925

USD 400 - 600

Stylized classic Chinese landscape motifs in gold lame & shades of orange on black silk ground w/ fur collar & auburn silk velvet collar, CF panels & lining w/ ruching around SH girdle, SH-SH 24", L 45", (label removed, significant fraying, fur matted left hem, 0.25" hole right lapel, few tiny holes & spot stains, 1" V cut left lapel, velvet at back of collar shattering) fair. Sam Houston State University.400



86: LILLI ANN WOOL COAT, SAN FRANCISCO, LATE 1940s

USD 300 - 500

Brown & black wool princess line coat w/ nipped W & flared skirt, trapunto quilted ribbed pelerine inspired collar & graduated chevron skirt panels, label "An Original from Lilli Ann of San Francisco", B 36", W 28", L 46", (few tiny-0.5" snacks at underside of lapel & front/back of right SH, 0.5" repair right SLV) excellent.



87: THREE DAY DRESSES, AMERICA, 1950s

USD 300 - 500

1 rayon halter dress w/ shirt collar, red CF buttons & oversized draped pockets to front full gathered skirt, B 34", W 25", L 45.5", (CF snaps detached w/ green oxidization stains, 3.5" x 0.5" light stain above hem) very good; 1 pink & white cotton printed houndstooth house dress w/ cap sleeves, fitted bodice w/ CF white button closures, label "Brillie London W.I.", B 41", W 30", L 43", (small cracks in buttons w/ 2 missing, belt missing, fraying at lapel, collar & cuffs, tiny spot stains, sm seam openings armscyes) good; 1 white cotton dress, hand embroidered yoke w/ attached ruffle, B 38", W 33", L 41", (light discoloration, tiny-0.5" spot stains, belt missing, 0.25" hole seat, minor seam fraying) good.

Annual Autumnal Elegance



88: FOUR COTTON OR FELT SEPARATES, 1950s

USD 300 - 500

1 red & white cotton gingham & blue cotton halter top, L 14", under B 27", (neck ties cut & raw, B dart stitches messy & fraying); 1 turquoise wool & silk felt high waisted skirt w/ decorative CF paired holes & buttons & removable suspenders, W 22.5", L 32.5", L w/ suspenders 46", (hanger imprints, tiny-0.75" holes, tiny-0.25" spot stains, buttons scratched); 1 sleeveless pink & white narrow stripe ribbed cotton top w/ back SH panel into inserted SH tabs buttoning onto front, CF button closures, B 37.5", W 30.5", L 20.5", (buttonholes fraying, few small spot stains); 1 blue chambray cotton skirt w/ CF button closures, W 27", L 33.5", (W band altered & faded, tiny-0.5" holes, light stains, 1 missing closure, 0.5" repair at W) all fair-good.



89: FIVE CHILDRENS OUTFITS, AMERICA, 1930-1940s

USD 300 - 500

2-pc red cotton poplin w/ white & blue ensemble, label "Florence Eiseman, Custom Made", CH 26", W 21.5"-24.5", L 20"; 2-pc purple & white linen romper ensemble w/ appliqué & embroidered giraffe, CH 26", W 23", L 19.5"; 2-pc cotton plaid short & white top ensemble w/ MOP buttons, CH 27", W 22", L 19"; 1 boy's knit sweater vest, label "Pandora Pixies", unstretched CH 24", L 14", (sm holes); 1 pair green wool twill summer camp suspender shorts w/ tag "Mattie B. Medford", W 22"-25", trouser L 10.75", full L 19.75", (few pin holes); 3-pc red & white ensemble w/ linen vest & shorts, cotton shirt w/ MOP buttons, overalls W 20-24", L 20.5", shirt CH 25", L 13", vest CH 25", L 11.5", (most w/ light wear & stains) all very good- excellent. Sam Houston State University.



90: FOURTEEN MATCHING MINSTREL COSTUMES, AMERICA, 1930s

USD 2,000 - 4,000

All silk satin multi-piece ensembles c/o tailcoat, faux W coat, false collar, flat bowtie & pants w/ peach or yellow reverses & linings, band leader w/ sequined reverses, most others w/ celluloid, rose cut faceted glass & base metal buttons, coats w/ pleated cotton ruffles at slvs, lined in cotton twill, pants lined in cotton, coat CH range 26"-32", L range 29-34", SH-SH range 10-14.5", trouser W range 21-32", L range 26.5-36", inseams 17.5-26", dickie collar circs 11.75-13.25", bow ties 11.75-15.5", dickie L's 13.5"-15.5", necks 10.25"-11.75", (all w/ general stains/discoloration, some underarm stains, few w/ shattering & small-2" repairs, some pants w/ alterations & tiny-1"holes, elastic shot, missing beads) all fair- good. A.T. Jones & Sons.



91: THREE GENTS WAISTCOATS & ONE LADIES VEST, 1840 -1860s & c. 1912

USD 400 - 600

1 entirely handmade in book linen w/ black hand embroidery, c. 1840, CH 35", W 34", L 21", (stains/discoloration, trim worn, sm seam openings collar & left W strap); 1 ladies blue & gold panne striped velvet lined in blue silk w/ soutache & turks knot closures, c. 1912, CH 34", L 20", (tiny-2" wear spots, shattering at closures); 1 blue, black, green & brown Balmoral plaid silk velvet double breasted w/ domed buttons, lined in striped cotton twill, 1860s, CH 32", L 23", (wear, stained/shattered lined, tarnish, armscyes torn); 1 blue, grey & maroon wool & silk in variegated horizontal stripe w/ 2 front W pockets & eyelash watch pocket, glazed cotton backing & lined in cotton, 1840s, CH 36", L 19", (tiny-1.25" holes, tiny stains) all fair-good.



92: GENTS EMBROIDERED FROCK COAT, c. 1800

USD 1,200 - 1,500

Brown patterned silk frock coat pre-embroidered in satin stitch fantasy floral, leaf motifs & enclosed diamond pattern borders, embroidered CF buttons, lined in silk satin & figured ribbon, most likely English, CH 33", L 37", SH-SH 16.5", (staining to SHs, heavy embroidery wear, 3.75" seam opening CB collar, shattering/detaching lining at collar edge, modified & missing underarm panels, 1 button missing, 0.75" & 2" repairs left CH, lining damaged, shattering slv seams) fair. Ohio State Historic Costumes & Textiles Collection.



93: AMERICAN PALESTINE LINE CREW UNIFORM JACKET, AMERICA, 1924-1925

USD 500 - 800

Wool steamship crew uniform jacket for ?American Palestine Line? company, w/ raised bullion embroidered ?Palestine? & ?No. 48 K. T. A? to collar, wool braid to collar & CF, silk blend lining, obscured label, CH 39.5", SH-SH 19", L 30.5", (tarnish to lettering on collar, seam opening CF armscye, label very worn/detaching) very good. From the Collection of A.T. Jones & Sons.

Annual Autumnal Elegance



94: FIVE PIECE MARYLAND STATE CORRECTIONAL FACILITY UNIFORM, 1920s

USD 4,000 - 6,000

5-pc prison inmate uniform in wool cotton blend c/o horizontal striped jacket, matching waistcoat, hat & pants, long sleeved cotton shirt w/ inmate number printed over pocket, waistcoat w/ cotton back & buckle stamped "Paris", jacket CH 44", SH-SH 23", L 26.5", waistcoat CH 40", W 37", L 23.5", shirt CH 42", SH-SH 22.25", L 27.75", pant W 31", L 39.5", inseam 29.5", (buttons/holes worn, 0.5"-1.5" holes & repairs to jacket & W coat, general wear/discoloration, internal CH pocket cut on on W coat, tiny-1.5" stains, numbers faded, 4" & 3.5" holes pant cuffs & 1"-1.5" repairs) all fair- good. From the Collection of A.T. Jones & Sons.



95: US MARINE CORP RESERVE WOMEN'S CORPORAL UNIFORM, AMERICA, SUMMER 1945

USD 800 - 1,200

Two piece women's green & white seersucker US Marine Corp Reserve uniform c/o button up short sleeve shirt w/ corporal insignia to left sleeve, brass Marine Corp studs shirt collar, insignia at left SH, 4 patch pocket all w/ shaped flap & Marine Corp composite button closures, CF Marine Corp button closures, matching skirt, summer 1945, label "Mary Dorothy West", B 42.5", W 32", L 25.5", skirt W 28", L 29.5", (left collar pin bent, stain cluster near CF buttons, 1 button detached & incl. skirt hem unfinished & let down, taken in at W & fabric still present, few spot stains) very good. From the Collection of A.T. Jones & Sons.



96: SPATZ RAINCOAT, AMERICA, MID 20TH C

USD 400 - 600

Brown raincoat & hat in rubberized cotton, boot buckle toggle closures, label "Weathermac, Spatz, New York, Beverly Hills", B 47", L 46", hat Ht 8", circ. 23.5", (fading/discoloration, 4" repair left SH & 1.75" right, metal oxidization, wear spots to collar, 1.25" repair CB, 2 white stains hem, hat lining worn) fair. From the Collection of A.T. Jones & Sons.



97: TWO INDIGO DYED MENS ROBES, c. 1900

USD 400 - 600

1 indigo dyed Egyptian cotton w/ tablet woven edging, vestigial sleeves & CF w/ tablet woven cord, metallic tassels & rosettes, CF w/ beaded tassels, red & yellow printed cotton lining, SH-SH 19", W 67", L 59.5"-62", (light stains, 1", 0.75" & 1.5" tear at CB SHs, W line altered to make shorter, lame tarnished/worn, trim worn/fraying, tassels messy) good; 1 indigo dyed silk & cotton w/ embroidered collar, band woven edging & tablet woven band across vestigial sleeves at back w/ short tassels, SH-SH 18", W 61.5", L 55"-59", (lining missing except at collar, embroidery worn, tassels messy, light stains, trim strip detached right back) very good.



98: WOMENS EMBROIDERED CHYRPY, TURKMENISTAN, LATE 19TH C

USD 400 - 600

Hand embroidered women's Chyrpy on natural cotton ground, Tekke people Turkmenistan, B 44", L 45", (sleeves removed/armscyes raw, light stains/discoloration, hem raw, 3" & 1.5" tears right underarm) fair. From the Collection of A.T. Jones & Sons.



99: TWO BRIDAL APRONS, MACEDONIA, c. 1880

USD 300 - 500

1 tapestry weave cotton & metallic thread on linen warp w/ metallic galloon trim, black & white & chatoyant beads, metallic & silk soutache, cotton & wool tassels & braid, base of boarder of wool w/ goat hair under waxed cotton fringes, 20"-27" x 29" w/ 1.5"-4" fringe, (many tiny-1.5" patches of weft wear, bead loss, fringe worn, worn/loose braided cord, lame ribbons worn/detaching, tarnish); 1 wool & cotton warp surface patterned weave on narrow loom, 21" x 28" w/ 3.5" fringe, (wear to fringe, edge trim & ties, left tie cut, many tiny-1" patches of weft wear) both good. From the Collection of A.T. Jones & Sons.

Annual Autumnal Elegance



100: MANS SZUR JACKET, HUNGARY, LATE 19TH C

USD 400 - 600

Natural black & red wool & wool felt w/ cotton cording & leather, printed cotton flannel half lining, machine stitched, CH 46", L 26", (many tiny-0.5" holes in red felt, discoloration, 1" stain front right hem, wear to leather, flower warped, lining worn/discolored, 2" seam opening right armscye & 1.75" left) good. From the Collection of A.T. Jones & Sons.



101: WOOL & LAME VEST, GREECE, LATE 19TH C

USD 300 - 500

Black wool vest w/ woven lame diamond motif & wool trapezoids in reverse chevron, crochet cotton edging, possibly reconstructed from ladies apron, CH 40", L 24.5", (tiny pulls, tarnish, 0.25"-1" wear spots across back, 0.25"-0.5" holes to exterior & lining) good.



102: EMBROIDERED GALA SURCOTE, BALKANS, c. 1900

USD 500 - 800

Fine wool broadcloth w/ lame soutache cord appliqué & metallic gold embroidery, B 31.5", W 26.5", L 46", (magenta W tie added, wear/some tarnish to lame, tiny-small wear spots/snacks, tiny-0.5" holes left SH, sm stains right H, 2 tiny holes above CF hem) good.



103: OTTOMAN INFLUENCED TROUSERS, BALKANS, EARLY 20TH C

USD 300 - 500

Both originally mens remade for ladies: 1 pair black velvet trousers w/ metallic lame embroidered wheat motif on black silk velvet, coral pink silk satin godet w/ lame ribbons, W 33", L 43", inseam 31.25", (velvet very worn, tarnish/wear, shattering/wear to hems, red leg inserts & W band, lame partially missing, lining discolored); 1 pair black wool & cotton blend twill Hussar style trousers w/ cotton & metallic soutache, dyed bone buttons, printed cotton lining, Balkan Peninsula, W 33.5", L 38.5", inseam 31", (braid/cord wear, belt missing, lining in left leg torn/falling, shattering & 0.5" seam opening lap, tiny holes/light wear) both fair. From the Collection of A.T. Jones & Sons.



104: COURT EMBROIDERED VEST, GREECE, LATE 19TH

USD 400 - 600

Silk velvet w/ metallic embroidery, galloon & soutache, lined in white cotton, CH 41", L 21", (bead loss on buttons, wear, crushing to velvet, tarnish, tiny-0.25" holes, 3" line of black stains at back) good. From the Collection of A.T. Jones & Sons.



105: TWO METALLIC EMBROIDERED COURT VESTS, OTTOMAN EMPIRE, LATE 19TH C

USD 500 - 800

1 w/ appliqué lame double cording w/ metallic sequins on purple silk velvet ground, lined in printed cotton, most likely Greek courtier, open B 33", L 11.5", (lining damaged, left SS unpicked & 3" unpicked right SS, sequin loss/detaching braids, minor tarnish, 1" seam opening left SH); 1 w/ lame rapport embroidery & bullion on white wool broadcloth ground w/ official coat of arms of the Ottoman Empire, established in 1882 at the request of Queen Victoria, open B 32", L 14", (lining shattering, minor tarnish/wear, 4.25" braid detached at CB neckline, left SH & missing on right SH, 0.25"-0.5" holes) both good- fair. From the Collection of A.T. Jones & Sons.



106: GOLD METALLIC EMBROIDERED GILLET & WAISTBAND, OTTOMAN EMPIRE, MID 19TH C

USD 400 - 600

Both of cream wool & cashmere blend w/ gold metallic cording, gilet edged w/ metallic gold tone flat cable & lined in silk sateen, shaped W band edged w/ metallic gold braid & w/ drop button woven metallic tassels terminating in single glass bead, open B 32", L 15", belt L 25.5", Wd 2"-5.25", (lame cord fraying/detaching at underarms, tarnish, pulls, discoloration, few tiny holes, belt lining shredded/torn, at least 1 bauble missing) both good. From the Collection of A.T. Jones & Sons.

Annual Autumnal Elegance



107: RAPPORT EMBROIDERED WEDDING ROBE, UZBEKISTAN, EARLY 20TH C

USD 400 - 600

Midnight purple cotton velveteen wedding robe w/ gold metallic rappaot embroidery in peacock & pheasant motif, tablet woven metallic edging w/ braided metallic button closures from below throat to hem, lined in black cotton, Uzbekistan, CH 47", L 55", (wear to lame, minor tarnish, pulls) very good.



108: RAPPORT EMBROIDERED FORMAL ROBE, OTTOMAN, MID 19TH C

USD 500 - 800

Burgundy cotton velveteen w/ rappaot embroidery in arabesque & floral motifs w/ raised work petals & details, metallic sequins & bullion, CH 52", L 52"-56", (wear/pulls to embroidery, tarnish, parchment exposed under embroidery in many spots, lining stains) very good.



109: ONE RESIST STENCILED & ONE IKAT WOVEN KIMONO, JAPAN, 1970s

USD 300 - 500

Resist stenciled kimono overpainted in shades of orange w/ original wrapping, dated 1976, CH 46", L 63", (visible basting stitches at sleeves); 1 white silk crepe w/ double Ikat grid & warp spot motif, w/ original wrapping, CH 45", L 62.5", both excellent.



110: TWO RESIST DYED & PRINTED KIMONO, MID 20TH C

USD 300 - 500

1 light blue Kosode in resist dyed & painted silk crepe, lined in red china silk, B 50", W 51", L 63", (3" x 1" stain left lapel, areas of fading) very good; 1 jacket in resist dyed & painted silk w/ woven wave pattern, B 43", W 47", L 38", (kimono altered to create jacket w/ basting stitches at W, 2" & 0.5" seam openings right underarm, 4" & 3" seam openings left underarm, 0.5" repair left W, W tie thread coming undone) good.



111: TWO SUMMER KIMONO, JAPAN, 1970s

USD 300 - 500

1 indigo dyed w/ brocaded thistle blossoms, original wrappings, CH 45", L 62", (few tiny spot stains front panel); 1 purple brocaded w/ stylized arrow fletching motif & woven silver paper shafts, original wrappings, CH 44", L 63.5", both excellent.



112: EMBROIDERED LAME WEDDING KIMONO, JAPAN, EARLY-MID 20TH C

USD 400 - 600

Wedding kimono embroidered w/ floral, palm, & crane motifs on patterned lame ground, padded hem, crimson silk lining, CH 52", L 72", (pulling esp to cream satin embroidery, tiny-0.5" spot stains, hem dirty w/ tiny-3" wear holes, discoloration) good.



113: SEMI-FORMAL DRAGON ROBE, CHINA, 19TH C

USD 3,000 - 5,000

Mans semi-formal Jifu with horse-shoe cuffs, side opening w/ round metal buttons, dragon, wave, cloud & mountain motif in couched gold thread, CH 62", L 54", (many detached gold cords, minor shattering in black sleeves, CH & underarms, 6.5" tear left sleeve, cording wear, 1" tear bottom CF seam) fair.

Annual Autumnal Elegance



114: TWO CREAM WOOL BURNOOSE, MOROCCO OR TUNISIA, c. 1937

USD 300 - 500

Both fulled wool w/ twined braid & appliqué embroidered top seam on ?hood? & knotted netting inserted godet between openings: 1 w/ cream embroidery on hood, SH-SH 18", L 48"-56", (pilling, 2 tiny holes CB, wear to trim, light stains around hood); 1 w/ white embroidery on hood, SH-SH 20", L 46"-58", (pilling, 0.25" spot stain left B, wear to trim) both good. From the Estate of Doris Duke, Newport Restoration Foundation.



115: DORIS DUKE WOOL BROADCLOTH BURNOOSE & ROBE, NORTH AFRICA, MID 20TH C

USD 300 - 500

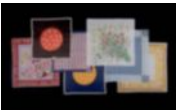
1 purple fulled wool burnoose w/ twined silk braid & appliqué embroidered top seam on ?hood? & knotted netting inserted godet between openings, front opening edged in soutache & braid, SH-SH 18", L 63", (many tiny-1" snacks, 1"-2.5" repairs, spot stain to cream trim, 0.5" hole below hood); 1 cream wool broadcloth w/ applied silk braid to neckline, down CF & at hem, decorative CF loops & buttons, godet gusset, CH 62", L 56", (light discoloration, 5 missing buttons, 3", 1.5" & 6" seam openings b/t collar & facings & 1.25" & 0.75" openings b/t collar & braid back right, tiny spot stains & small snacks) both fair. From the Estate of Doris Duke, Newport Restoration Foundation.



116: GENEROUS LOT OF DORIS DUKE SCARVES & TEXTILES, MID- LATE 20TH C

USD 300 - 500

Mostly printed & woven silk scarves, many for tourist trade, Wd range 5"-50", L range 97"-120.5", including: 1 orange & yellow w/ white daisies, label "Made in France"; 1 white & gold scalloped lace; 1 red chiffon handkerchief, (shattering, 2.75" repair), (many w/ small pulls & stains). From the Estate of Doris Duke, Newport Restoration Foundation.



117: CARDIN, PUCCI, GIVENCHY, VALENTINO & GUCCI SCARVES, LATE 20TH C

USD 300 - 500

All silk or cotton: 1 red, white & blue with "I" pattern, label "Givenchy", 14.25" x 14.25"; 1 blue w/ orange center, 15" x 14.5", (sticker residue 1 corner); 1 white & gold, label "Valentino", 17.5" x 17.25", (center crease); 1 abstract red & pink Pucci, label "Emilio", 17" x 17.25", (stain 1 corner); 1 brown w/ red center, label "Givenchy", 14.75" x 14.75", excellent; 1 w/ bouquet, label "Gucci", 16.75" x 16.5", (light spot stains); 1 blue & white, label "Pierre Cardin Paris", 18.75" x 18.5", (tag removed, 0.25" stain center)



118: FOUR EMILIO PUCCI SCARVES, ITALY, LATE 20TH C

USD 300 - 500

All cotton & w/ signature "Emilio": 1 green, tan & white, 17.25" x 17", (very light spot stains); 1 brown, blue & mustard, 17" x 17", (1.25" fraying 1 edge, light spot stains); 1 brown, blue, orange, black & white, 17.5" x 17", (light discoloration/spot stains); 1 blue, grey, white & yellow, 17" x 17", (light stains)



119: FOUR EMILIO PUCCI SCARVES, ITALY, LATE 20TH C

USD 300 - 500

All cotton & w/ label "Emilio": 1 white, black, blue & purple, 17" x 16.75", (few light spot stains); 1 aqua, black & white, 17.25" x 17", (0.25" stain 1 edge); 1 maroon, aqua, white & black, 17.25" x 17", excellent; 1 black, white, blue & green, 17.5" x 17", (label removed 1 corner); t/w 1 pastel, black & white scarf, label "Emilio Pucci Firenze", (pilling)



120: JACQUARD WOVEN PAISLEY SHAWL, 1850s

USD 300 - 500

Jacquard woven wool paisley shawl w/ separately woven & attached border in typical gate motifs, embroidered imitation manufacturer's mark to center black ground, attributed to George Cochran, 72" x 74", (fringe & "signature" worn, few tiny-0.25" holes at center, 1.5" hole at 1 corner, few scattered tiny wear spots & 0.5" worn spot) good.

Annual Autumnal Elegance



121: JACQUARD WOVEN PAISLEY SHAWL, 1850-1860s

USD 400 - 600

Jacquard woven wool paisley shawl w/ elongated double boteh motifs & elongated stylized gate border motifs, possibly French, 72" x 71", (fringe worn, 0.5" & 2 tiny holes near center) excellent.



122: EMBROIDERED & WOVEN KASHMIR SHAWL CAPELET, 1870-1880s

USD 500 - 800

Embroidered & woven Kashmir cape, SH-SH 18.5", L 25", (fringe worn, CF buttons missing, tiny-1" wear spots at hem w/ 0.25" tear, several tiny-0.75" holes esp to embroidered bands, many tears/repairs to lining) good. From the Collection of A.T. Jones & Sons.



123: TWO REVERSIBLE MANTON DE MANILA SHAWLS, 1920-1930s

USD 500 - 800

Both reversible on black silk ground w/ elaborate decorative knotted fringes: 1 embroidered in multi-color silk fantasy floral motifs, 57.5" x 62.5" w/ 17" fringe, (many tiny pulls); 1 embroidered w/ orange roses & pinks, 60" x 66" w/ 19" fringe, (many pulls) both excellent.



124: TWO CHANTILLY LACE & ONE HAND EMBROIDERED SHAWLS, 1840-1860s

USD 300 - 500

1 large Chantilly lace shawl, 1860s, 107" x 52", (7" long hole, few small holes across top edge, edges fraying) fair; 1 small demilune Chantilly lace shawl, 1860s, 34" x 34", (minor edge fraying, 0.5" hole left corner neckline, few broken brides) good; 1 rectangular black tulle hand embroidered w/ silver silk & chainstitch edging, 1840s, 25" x 79", (minor edge fraying, few broken brides/pulls) excellent.



125: LARGE CARRICKMACROSS SHAWL, 1850-1860s

USD 600 - 800

Carrickmacross chainstitch lace shawl in typical floral & foliate motifs w/ needlelace fillings, 1860s, 85" x 88", (many tiny-small holes) very good.



126: LARGE CHANTILLY LACE SHAWL, 1860s

USD 400 - 600

Chantilly lace shawl w/ typical border motifs & vining foliate center, 76.5" x 72.25", (edges fraying, broken brides, 0.5" hole near center) very good.



127: TWO TAMBOUR & LACE RUN SHAWLS, 1850-1860s

USD 800 - 1,200

Both all hand embroidered in lace running & tambour stitch: 1 fold-over shawl w/ chandelier vine motif in corner, 75" x 76", (tiny-1" repairs, tiny-0.25" holes, pulls) very good; 1 w/ serpentine blossom & leaf motif border & sprigged ground, 67" x 64", (scattered tiny-0.25" holes) excellent.

Annual Autumnal Elegance



128: LACE RUN BONNET VEILS, 1850s

USD 300 - 500

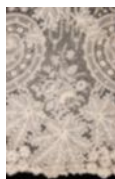
Both hand embroidered in running stitch w/ needle lace fillings: 1 w/ smaller floral border & inner sprigged border, 46" x 52", (few tiny holes, 0.5" stain one edge) excellent; 1 bonnet veil w/ larger floral border motif & dense floral ground, 45" x 45", (tiny holes & tiny-0.5" repairs throughout) very good.



129: BRUSSELS APPLIQUÉ SILK WEDDING VEIL, EARLY 20TH C

USD 800 - 1,200

Brussels applique lace w/ needle lace filling on silk tulle veil, 88" x 104", (few tiny spot stains & few tiny clusters of broken brides) excellent.



130: POINT DE GAZE MIXED LACE RUNNER, 1860s

USD 800 - 1,200

Mixed lace runner w/ Alençon, point de gaze & bobbin lace backed w/ silk tulle, worn as wedding shoulder train May 19th, 1923, 22.5" x 125", (net backing basted on, few spot stains, lightly discolored edge, few tiny pulls/broken brides) excellent.



131: CROCHET DICKIE, RUNNING LACE SHAWL & SOUTACHE CAPELET, 1840s & 1900-1914

USD 400 - 600

1 crocheted dickie w/ crochet CF tie, plain cotton back & pink ribbon ties, c. 1900, L 16", Wd 13", (ribbons a modern addition, few tiny spot stains) excellent; 1 cream silk running lace shawl gathered for fold back pelerine collar, 90" x 46", (minor fraying, tiny holes, 3" seam opening left edge, few spot stains) very good; 1 cloud collar influenced net bolero w/ densely applied soutache in vermicelli pattern, CB panel w/ medallion & triple tassels, smaller tassels over SHs, c. 1914, SH-SH 18", L 14.5", (center back medallion detached, tassels messy, tiny holes & spot stains) good.



132: THREE WOOL BATHING COSTUMES, ENGLAND, 1920s

USD 400 - 600

1 navy knit w/ cream borders & applied soutache, unstretched B 33", W 31", L 32", (holes to inseams & left H, minor discoloration, trim detaching) good; 1 teal w/ white & teal diamond motif on skirt, label "Meridian Interlock" & "British Make", unstretched B 35", W 30", L 32", (discoloration, 5" light stain below left B, 2 repairs at W) good; 1 black w/ drop W skirt in pale blue & white stripe, label "Meridian Interlock" & "British Make Pat No. 20409/08 Extended to 28.8.28", unstretched B 29", W 26", L 34", (skirt discolored) excellent.



133: TIANA PITTELLE BATHING SUIT, HONOLULU, LATE 1940s

USD 400 - 600

Printed cotton bathing suit c/o bandeau top & high waisted shorts w/ red cotton trim & halter necktie, shell embellished & kapok stuffed mermaid motif to shorts, label "Tiana Pittelle Fashion, Originator Waikiki, Honolulu", bikini top B up to 54", Wd 1.75"-7", shorts W 27", L 14", inseam 2.25", (light wear to edges, bones beginning to wear through interior, 0.75" partially repaired hole right front leg, 0.25" hole inseam, few clusters of tiny spot stain) good.



134: PRINTED COTTON HOLOKU WEDDING DRESS, HAWAII, 1930s

USD 500 - 800

Printed cotton Hawaiian wedding dress w/ integrated caped collar & fishtail train both edged w/ self ruffle, B 33", W 30", L 58"-88", (tiny pulls to ruffle edges) excellent.

Annual Autumnal Elegance



135: TWO DAY DRESSES, AMERICA, 1920s

USD 300 - 500

1 cream crepe chiffon w/ vertical pin tucking over SHs & paired scalloped tucks horizontally over slightly bloused bodice, 3 tiered & scalloped skirt, B 36", W 36", L 41.5", (small hole left SS, light staining underarms & CB, 0.5" hole topmost skirt tierbinding at CB)excellent; 1 cream silk crepe de chine w/ bloused faux tunic over short sleeved bodice w/ decorative fagoting, single self-rose at left SH & right H w/ moire ribbon tassels, tucked ribbon sash at drop W, attached skirtw/ rows of vertical tucking & paired self flower panaches above hem, label "Rose Wilcom Gowns, Scranton PA", B 34", W 34", L 39", (tiny-0.75" holes above hem, light stains H, underarms & hem) good.



136: TWO GIRLS PARTY DRESSES, 1920s

USD 300 - 500

1 Piña fiber w/ Heilmann embroidered bouquets of blue forget-me-nots, tucked circlets edged w/ lace & appliqué to from W & around skirt, vertical bow at CB trimmed w/ extended tail trimmed w/ ruffled lace, mid 1920s, B 40", W 40.5", L 41", (discoloration, tiny-sm holes esp at hem, few tiny spot stains, sash at back W detaching); 1 yellow silk crepe smocked w/ cinnamon silk at neckline, sleeves cuffs & W, CF brown ball buttons, CB neck opening, B 49", W 36", L 42", (light underarm stains, neckline facing worn, 0.25"-1.5" stains to skirt, raw hem) both good.



137: TWO EVENING GOWNS, c. 1934

USD 400 - 600

1 vermillion hammered crepe evening dress w/ front cowl neck, inset bias front W panel w/ diagonal tucks at sides & back V-neck into long drop ties, draped half sleeves extending from back panel, B 34", W 32", L 63", (spot stains, 5" repair CB, 0.25"repair at B) good; 1 pale peach silk chiffon summer party dress w/ bias draped front cowl neck, double keyhole back slits, elaborate geometric piecing w/ bias panels & matching jacket w/ front tie & sleeve cut in triple biasdiamond panels to rolled edging, B 34", W 30", L 58", jacket SH-SH 16", L 15", (right CB keyhole tack undone, light scattered spot stains, 0.25" hole CF B, 1.5" x 4" stain lap, wear to armscyes) good.



138: VELVETEEN CLOAK & BROCADE MANTON DE MANILLA, EARLY 20TH C

USD 300 - 400

Brown cotton velveteen cloak w/ standing band collar, 2 silk braid frog closures at CF, front arm slits, copper satin lining, SH-SH 19", L 57", (tiny crushed patches) excellent; 1 black silk brocade Manton de Manilla w/ knotted black silk fringe, 57.5" x 59" w/ 11.5" fringe, (ends of fringe worn, few tiny holes/pulls) excellent.



139: TWO SILK VELVET EVENING CLOAKS, 1930s

USD 300 - 500

1 claret silk velvet cloak, deep capuchon hood trimmed w/ double pleated self-ruffle, front arm slits, CF self-covered button closures to W, lined in midnight aubergine satin, SH-SH 18", L 55", (heavy crushing to velvet, small area of missing pile right B, 0.25"-2" seam openings & repairs, lining separating at arm slits) good; 1 black & red silk velvet reversible cape w/ funnel standing collar over finely ruffled yoke, CF hook & eye, SH-SH 18", L 50", (4.5" stain CF hem, several 0.25"-3.5" stains front right, crush patch, closure loop torn, pull to pleat stitches) very good. From the Collection of A.T. Jones & Sons.



140: ONE WOOL EVENING COAT & ONE SILK VELVET CAPE, LATE 1930-1940s

USD 400 - 600

1 scarlet wool coat w/ gel sequins to strong SHs, band collar, 2 CF self-covered buttons, rayon lining, 1940s, B 39.5", W 31", L 55", (damaged & missing sequins, discoloration/wear to hem, some tiny-0.25" holes at hem & CB, spot stains lining) very good; 1 black silk velvet cape w/ ruffled & stiffened collar, paste clasp applied to either side of hook & eye closure at throat, cream velvet lining, c. 1939, SH-SH 18", L 48", (1.75" & 1.5" seam openings right SH, discoloration to lining at hem & collar, tarnished & missing closures, fade spots, 2.5" & 1.5" seam openings hood) very good. From the Collection of A.T. Jones & Sons.

Annual Autumnal Elegance



141: MODERNE LAME EVENING CAPE, 1930s

USD 300 - 500

Moderne evening cape overprinted in multicolor floral & leaf motif on silk & lame w/ raised lame brocade, fur collar w/ hidden clasp at throat, copper satin lining, SH-SH 15", L 30"-35", (some tarnish, few 1"-6" seam openings, wear CF opening, few wear/pull spots, fur shedding, hem stitches visible) very good. From the Collection of A.T. Jones & Sons.



142: THREE LACE OR SEQUIN EVENING JACKETS, LATE 1920-1930s

USD 300 - 500

1 black net w/ black bugle beads & blue sequins in geometric & arabesque motifs, CF tie closure w/ sequins ball baubles & shaped long sleeves w/ dramatic V over wrist, open B 39", L 29", (bead/sequin loss, sequins damaged, pulls) fair; 1 black re-embroidered lace elaborately pieced w/ decorative fagoting, scalloped open bell sleeves & hem line, gathered over Hs, single snap closure at CF hem, c. 1920, B 42", L 26"-32", (minor edge fraying, broken brides, few pulls, 0.25" tear to hem) very good; 1 short sleeved cropped jacket encrusted w/ black, red, blue & green sequins in abstract floral motif, open B 34", L 18", (sequins worn & flaking) fair. Ohio State Historic Costumes & Textiles Collection.



143: CANTON EMBROIDERED JACKET, CHINA, 1930s

USD 400 - 600

Chinese embroidered jacket w/ figural & landscape motifs, decorative & functional self-covered buttons w/ floral motif, pre-embroidered to garment shape, tag "Lenore J. Traver", B 39", L 25", (light stains/discoloration, 0.5" & 1.5" shattering at right hem & 0.25" to right sleeve, tiny hole b/t SH blades) good.



144: PRINTED CHIFFON PARTY DRESS, MID-LATE 1920s

USD 300 - 500

Sleeveless printed crepe chiffon party dress w/ crystal beads & rhinestones outlining exotic floral motifs, asymmetrical circular cut hem flounce w/ piped seam & blackened bugle beads at irregular hem, B 40", W 40", L 41"-48", (stone & bead loss, stains/wear to SH straps & underarms, 0.5" hole left underarm, 3" x 1.5" hole right underarm, stains esp. at back left skirt) fair.



145: SILK VELVET COCOON COAT, 1910s

USD 400 - 600

Cranberry silk velvet cocoon coat w/ slight cross over front to single oversized silk cord & domed button closure at W, dolman glove length sleeves w/ rows of tacked pleats above wrist, slightly scalloped hemline, CH 56", SH-SH 18.5", L 52", (tiny-small crushed patches, unpicked tacks on sleeves, loop for inner button torn, wear to CF W trim, 0.25" & 0.75" tears left SH/neckline) good.



146: HOUSE OF TAPPE EVENING GOWN, NEW YORK, LATE 1930s

USD 500 - 800

Black crepe backed satin w/ sweetheart neckline edging w/ knife pleated self-ruffle & pierced to accept inserted slender SH straps, ruched CF W w/ elaborately pieced & radiating H panels accentuated by slender self-belt from knot at CF W to flat bow at CB over hook & eye & snap, CB self-covered domed button & loop closures, bias cut full skirt, label "House of Tappe, New York", B 36", W 28", L 55", (many tiny-0.5" scuffs/pulls, light wear/discoloration to underarms, hem altered, wear/discoloration to seat & SH straps, light wear to buttons) very good.



147: SCARLET WATERED SILK EVENING GOWN, 1930s

USD 500 - 800

Scarlet satin backed impressed moire silk gown w/ surplice bodice front & back into pleats at right H w/ applied ruched double cascade from drop W to knee & asymmetrical handkerchief hemline, B 34", W 32", H 40", L 56"-60", (minor shattering left SH strap, 2" seam opening left SS hem, 1" & 1.5" tears CB hem, few tiny holes/wear spots, light stains, few torn tacks CF & CB V's at neckline, few missing closures) good.

Annual Autumnal Elegance



148: THREE BLACK BONNETS, 1880-1890s

USD 300 - 500

1 black silk taffeta w/ knitted & embroidered netting in imitation bow rimmed w/ black sequins, black feathers & black silk floral panache w/ 2 faceted French jet buckles & very long ties, 11" x 9" x 5", (feather bent & broken, florals fraying, liningshattering, edges worn); 1 black Chantilly lace w/ black jet beading, sweet pea fabric florals & dyed & trimmed black peacock feathers, 9" x 7" x 6", (broken/detached feathers, ribbon ends fraying, looped ribbons shattering, unlined, floralscrumpled/fraying); 1 black crepe chiffon & Chantilly lace on tulle base w/ en tremblant jet beaded wires & black silk velvet ribbon, 8" x 6.5" x 5", (minor bead loss, unlined, minor fraying) all good-very good.



149: SILK & VELVET BONNETS, 1870-1880s

USD 400 - 600

1 burnt umber silk velvet bonnet w/ silk faille ribbons & silk & metallic thread Heilmann embroidered brown wool & silk twill w/ a Van Dyke edge, 7" x 10" x 3", (tiny holes, wear to embroidery) excellent; 1 golden-brown bonnet w/ cream embroideredlace, silk velvet cascading Wisteria florals, lame lace overlay w/ straw baubles, 8" x 7" x 5", (ribbon ends fraying, lace shattering, many holes in lining, light wear) very good; 1 black velvet ruched bonnet w/ black feathers & jet beading, 8" x 10" x 4.5", (velvet worn, minor bead loss, bent/broken feathers, tiny holes/cuts, sm stain to ruffle) good.



150: THREE LADIES HATS, BOSTON, 1880s - 1908

USD 400 - 600

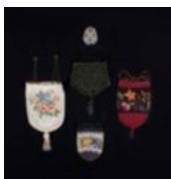
1 Queen Mary style in black Lino & satin stripe ribbon w/ black net embroidered w/ beads, sequins & small silk buds, 10" x 11" x 5.5", (beginnings of bead disease, wear, fading, shattering edges/fraying); 1 deep plum silk velvetRenaissance beret style w/ silk velvet florals w/ plush trim & dyed ostrich feathers, 12" x 12" x 3", (trim worn, lining shattering, bent/broken feathers, few spot stains); 1 w/ draped & pleated black chiffon & silk velvet w/ black & yellow silksatin ribbon trim & yellow & black curled ostrich feathers, label "Mme Gookin 11-15 Temple, PI Boston, Mass", 12" x 12" x 4", (ribbons & sheer fabric shattering, bent/broken feathers, wear) all good.



151: SIX HANDBAGS, FRANCE, 1880s-1920s

USD 300 - 500

1 tan patterned silk w/ composite Bacchus faux cameo on frame, illegible makers mark, 9"x10.5", (residue, 1 hinge broken, lining shattered); 1 brown velvet w/ silk tassels & faux tortoise closure, 10.25"x9", (wear, lining shattered); 1 brown crochet silkw/ composition Art Nouveau dragonfly woman clasp, label "Depose, Made in France", 6"x13", (clasp detached); 1 knitted w/ steel cut beaded graduated Austrian drape, round frame w/ cherubs, 1920s, 5-8"x6.75", (lining shattered); 1 crochet w/ monogrammed "EBD" in steel cut beads & w/ rose motif, chatelaine looped handle, stamped "German Silver?", 1880s, 5"x10.5", (lining dirty, rust, stain back right); 1 woven w/ silver & blue beads in diaper pattern, 5.5"x7", (bead loss), (most w/ tarnish), all fair-good.



152: FIVE BEADED PURSES, 1860-EARLY 20TH C

USD 300 - 500

1 beaded & embroidered tiny beaded coin-purse, 1860s, 2.5" x 3.75", (bead/fringe loss, tarnish, slightly warped); 1 black & green tambour beaded pouch, 1920s, 7.75" x 10", (bead loss/wear, cords fraying, unlined); 1 crocheted w/ chatoyantshort bugle beads reticule w/ multi-colored florals & tassels, 7.75" x 13", (tarnish, minor bead loss, discoloration); 1 crocheted reticule beaded in floral motif in navy, white & brown, 1910s, 5" x 7.5", (minor bead loss); 1 knitted reticule w/ red beaded ground & florals, c. 1920, 6" x 10.5", (2 tiny repairs, minor bead loss, 2 rings detached & incl) all good- very good.



153: THREE ART NOUVEAU BEADED BAGS, 1910s

USD 300 - 500

1 smaller faceted black & silver beaded w/ Art Nouveau openwork frame, lined in purple twill w/ lame ribbon trim, 6" x 6.5", (part of frame detaching, lining worn/fraying, tarnish, wear) fair; 1 larger black & silver faceted beadedbag in intertwining floral motif w/ looped fringe, lined in purple shot silk w/ manipulated self trim, 6.25" x 10.5", (tarnish, missing fringe, minor bead loss, lining shattering) good; 1 lavender crystal beaded knit bag in Austrian drape motif & loopedbeaded fringe w/ open work frame, lined in gold silk, grosgrain ribbon handle, 4.25" x 6.25", (ribbon handle worn, tarnish, lining discolored/shattered) good.

Annual Autumnal Elegance



154: THREE LARGE BEADED FRAME BAGS, 1910-1920s

USD 300 - 500

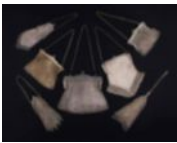
1 multicolor knit beaded bag w/ looped multicolor beaded fringe & gold tone frame, 6.5" x 9.5", (tarnish/oxidizing, frame warped, lining stained & detaching); 1 embroidered in pink w/ multicolored abstract floral & leaf border motifs on woven ground w/looped fringe & gold tone frame, 6.25" x 10.25", (bead loss in fringe, light tarnish, lining shattering); 1 smaller knit w/ multicolored beads in Austrian drape w/ looped fringe & gold frame, 6.5" x 9.5", (tarnish/oxidizing, frame warped, lining detaching) all good.



155: THREE WHITING & DAVIS & ONE ENAMELED AMORED MESH BAGS, AMERICA, 1920s-1930s

USD 300 - 500

3 stamped "Whiting & Davis": 1 in lilac, powder blue & yellow hanging floral on diamond lattice motif w/ gold-tone frame, 5.25" x 7.5", (clasp partially detached, wear, 1/2 of frame slightly warped); 1 in shades of orange, blue & purple w/ blue & silver frame, 5" x 7", (paint chipping, tarnish, frame slightly warped); 1 w/ rose motif in shades of purple, pink, green on white ground w/ black tracery, 5" x 7.25", (paint chipping, oxidizing/tarnish, 0.5" hole corner); 1 unlabeled in green, orange & purple w/ central diamond motif, 5" x 7", (tarnish/oxidizing, few links undone, slightly warped) all good.



156: SEVEN CHAINMAIL EVENING BAGS, AMERICA & GERMANY, 1910-1920

USD 300 - 500

3 stamped "Whiting & Davis Co?": 1 mail w/ braided, twined & forged chain handle on sliding frame for lock, Van Dyke fringe, stamped "Pat'd July 22, 1913", 7.75"x3.5", (detaching at hinge, few broken links); 1 armored mesh bag w/ Tudor bonnet frame, 3.5" x 7.5"; 1 mail bag w/ braided & forged chain handle in single loop from apex, "Pat'd Feb 1 1921, Oct 5 1920", 3.5"x7.5", (strap warped); 4 mail bags w/ square silver tone frames: 1 large w/ bud motif clasp, 9.5"x8" (oxidization, tiny holes) 1 w/ narrow frame & decorative fringe, 6.75"x8.5", (few detached links, sm hole trim); 1 w/ "E.B." monogram to frame, 6.75"x6", (interior worn); 1 w/ ball fringe, stamped "Ger Silver", 5.75"x5", (0.5"-2" holes, frame warped), (all w/ some tarnish) all good- very good.



157: BRUCE PANTTI & VINTAGE BANGLES, AMERICA

USD 300 - 500

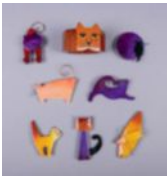
4 bangles signed "Pantti", all w/ lozenge motif, Wd 0.5", inner circ. 8": 1 cream yellow w/ marbled taupe, 1 cream yellow w/ marbled yellow, 1 marbled yellow w/ matte cream yellow dots, 1 yellow w/ carved marbled toffee-colored lozenge motif, (all w/ light scratches, some w/ sticker residue & scuffs); 5 marbled caramel colored vintage bangles, Wd 0.25", inner circ. 8.125", (all w/ very light scratches) all very good- excellent



158: SEVEN SHULTZ & PANTTI BANGLES, AMERICA, MODERN

USD 400 - 600

4 signed "Pantti": 1 marbled cherry red w/ green & yellow dots, Wd 1", inner circ. 8", 1 red marbled & cream stripe, Wd .625", circ 8.125", 1 mustard w/ red marbled lozenge motif, Wd 0.5", circ. 8", 1 marbled green w/ marbled red & matte cream dots motif, Wd 0.5", circ. 8", (all w/ light scratches); 3 signed "Shultz": 1 wide marbled green w/ large cream lozenge motif & 4 cherry red dots, Wd 1.125", inner circ. 8.125", (1 red dot missing), 1 checkerboard of marbled green & yellow w/ translucent cherry red, Wd 0.875", circ. 8", (0.5" crack in 1 red square), 1 cream yellow w/ cherry red & green marbled lozenge motif, Wd 0.675", circ. 8.125", (all w/ light scratches, some w/ discoloration) all very good- excellent.



159: SEVEN PAVONE GALALITH BROOCHES & ONE BRACELET, PARIS

USD 400 - 600

All signed "Pavone": 1 purple ombre stretching cat, 3.75" x 2.25"; 1 seated cat w/ purple body, red to orange ombre head & black tail, 2" x 3.5"; 1 forward facing cat w/ red body, purple head & red wire tail, 1.75" x 3.5", (tiny crack to back); 1 orange to yellow ombre cat w/ wire whiskers, 2" x 4"; 1 red to yellow cat w/ serrated tail, 2.25" x 3"; 1 ombre peach square cat w/ wire whiskers & tail, 3.5" x 3"; 1 black cat silhouette on purple disk, 2.75" x 2.25"; 1 unsigned marbled orange bracelet w/ cat face & trapezoid beads on elastic band, Wd 1.5"-2", inner circ. 7.25?-9?, (all w/ light scratches/scuffs) all good- excellent.

Annual Autumnal Elegance



160: SEVEN LEA STEIN BLUE & WHITE BROOCHES, PARIS

USD 400 - 600

All w/ findings stamped "Lea Stein, Paris": 1 Princess Lea w/ snake skin patterned Art Deco corona, striped ivory tone face w/ snakeskin & matte geometric cut outs for hair & stylized shell ears, 2.5"x2"; 1 Carolle Flower Lady w/ striped face, powder blue marbled tri-petal collar, cap & stylized shell ear, 2"x2.25"; 2 Carmen Joan Crawford brooches both w/ layered stylized wave hair, snakeskin or striped jackets & lapels, both 2.25"x1.875"; 1 Collarette Art Deco Lady w/ striped face, silver snakeskin skullcap, blue stylized shell ear & pearlized white & blue & black ruff, 2.125"x2.125"; 2 Potted Flower w/ pearlized snake skin, matte or marbled pot, 1.75"- 2", (all w/ light scratches/ scuffs, some w/ light discoloration) all very good- excellent.



161: EIGHT LEA STEIN RED, BLACK & WHITE BROOCHES, PARIS

USD 400 - 600

All w/ findings stamped "Lea Stein Paris": 1 Poulbot girl w/ cherry red striped umbrella & bicolor rainbow, 1.62"x1.62"; 1 Carmen Joan Crawford w/ layered stylized wave hair, cherry red marbled jacket w/ white lapels 2.125"x1.875"; 1 red & taupe ladybug w/ black head & spots, 2"x2.125"; 1 full Collarette Art Deco Lady w/ red to mauve collar, taupe skullcap w/ black lattice motif, 2.25"x2.25", (small indents back); 1 Gomina the Sleeping Cat in red & taupe w/ black eyes & ears, 3" x 2"; 1 cherry snakeskin Potted Flower w/ striped & snakeskin flowers, 1.5"x2.25"; 1 scarlet snakeskin & marbled burgundy evergreen tree, 2.25"x3.2; 1 red & taupe Art Deco Cicada w/ striped black head, 1.375" x 3.5", (all w/ light scratches & scuffs) all good- excellent.



162: THREE CELLULOID PRISON RINGS, AMERICA, 1930-1940s

USD 400 - 800

1 black ring w/ woman's face, Wd .125"-.75", inner circ. 67 mm, size 11.75; 1 w/ multicolor striped shank & black center featuring silhouette bust, Wd .125"-.625", inner circ. 54 mm, size 6.75; 1 black ring featuring portrait of couple, Wd .125"-.625", inner circ. 56 mm, size 7, (all w/ light scratches) all excellent.



163: THREE GODEY'S LADY'S BOOKS, PHILADELPHIA, 1857 & 1967

USD 300 - 500

1 "Godey's Lady's Book, Vol LV" July-Dec 1857, all plates present, 6.5" x 9.5" x 1.5", (cover worn/spine taped, writing inside cover); 1 "Godey's Lady's Book Vol LIV" Jan-June 1857, all plates present, 6.25" x 9.5" x 1.5", (writing inside cover); 1 "Godey's Lady's Book Vol LXXIV & LXXV", 1867, 6.5" x 9.75" x 2.5", (Oct, Feb, April, Sept & Dec plates missing, May & Nov plates 1/2 missing, cover very worn/spine taped) (all w/ some creasing/foxing/chipping/dyscoloration to pages) all good.



164: EARLY LADY'S & GODEY'S LADY'S BOOKS, PHILADELPHIA, 1831 & 1870

USD 500 - 800

1 "The Lady's Book" January-December, 1831, hats & bonnet plates for Feb, April, June, July & Dec, 6.5" x 9.75" x 2.5", (cover very worn & taped, several missing pages, water damage, heavy discoloration/foxing/chipping/creasing to pages); 1 "Godey's Lady's Book & Magazine", Vol LXXX Jan-June & Vol LXXXI, July-Dec 1870, all plates present, 6.5" x 9.5" x 2.25", (minor wear to cover, minor foxing/creasing/dyscoloration/chipping) both good.



165: TWO TRAVELING TOILETRY SETS & CASES, GERMANY & ENGLAND, EARLY 20TH C

USD 300 - 500

1 mint green guilloche brush set in imitation leather case, L range 6"-11", Wd range 0.5"-4.25": case 12.5"x8"x2.5": 1 hand mirror, (tarnish), 1 hairbrush, 1 clothes brush, (all brushes w/ some bent/broken bristles, all pieces w/ scratches/scuffs/wear/tarnish, some cracking to case) all good, case fair; 1 royal blue toiletry set w/ silver Art Nouveau tasseled mirror motif, in brown leather case, latch stamped "SOS4-New York Made in Germany", L range 2"-10", Wd range 0.25"-3.5": case 13"x9.5"x2.75": 1 hand mirror, (crazing), 1 shoe horn, 1 comb, (dirty, few warped tines), 1 nail file, 2 square bottles, 1 hairbrush, (bristles bent/broken), 1 box, (interior dirty), (all pieces w/ light scratches/scuffs/wear) all good- fair.

Annual Autumnal Elegance



166: SEVEN PAIRS DORIS DUKE TOURIST TRADE SLIPPERS & SANDALS, 20TH C

USD 300 - 500

1 pair tan leather slippers w/ gold stamped, possibly Egyptian, L 10.25", Wd 3.5", size 7, (right sole torn 1 embellishment missing); 1 pair red leather slippers w/ gold leaf spot grid motif, possibly Egyptian, L 10.25", Wd 3.5", size 8; 1 pair brown leather w/ embroidered medallion, North African, L 9.75", Wd 3.75", size 5, (seams undone); 1 pair red & tan cotton sandals, label "Frattegianni(?)Boutique, Firenze Roma-Venezia", L 9.25", Wd 3.25", size 5.5, (insole tears); 1 pair tan sandals w/ white horse hair appliqué, size 6.5, (shedding); 1 pair dark brown sandals w/ cutwork & dyed leather insertions & tassels, size 6.5, (small tears, leather creased, soiled), (all w/ light-heavy stains/discoloration & wear) all fair-good, t/w 4 pairs fishnet stockings.



167: THREE PAIR LADY'S HIGH LACED BOOTS & SPATS, AMERICA, 1900-1910s

USD 300 - 500

1 pair grey leather & twill cotton, Ht 11", Wd 3", L 10.5", size 6.5, (leather creased, wear/stains); 1 pair cream leather, Ht 10.5", Wd 3", L 10.5", size 6.5, (facing fraying/dirty, soles very worn/peeling, 1" cut right boot, metal oxidizing, leathercracked); 1 pair grey leather w/ corduroy spats trimmed w/ rabbit fur, boots label "Howard L. Culver The Shoe Fitter, Eau Claire, Wis", spats label "Motor Boots Spats designed & made by Cambridge Rubber Co.", boot Ht 9.75", Wd 3", L 10.5", size 6.5, spat Ht 7", L 9", (leather creased/worn, soles peeling, 1.25" scratch insole left boot, fur shedding on spats, 1 strap torn off & incl, wear/dirty) all fair- good.



168: HAND PAINTED NUDE PINUP TIE, 1940s

USD 400 - 600

Mans silk necktie w/ resist dyed & handprinted nude pinup girl in garter & heels, printed "Hand Painted", Wd 1"-4", L 50.5", (center seam pulling at either end on reverse) excellent.400



169: ASSORTED BOUDOIR ACCESSORIES, GERMANY & ENGLAND, 1930S

USD 300 - 500

3 ceramic pieces w/ lavender to yellow ombre in artichoke design: 2 perfume bottles, printed "Bavaria", (contents in bottles) & 1 cosmetic jar w/ lid printed "Germany", 6 pieces marbled butterscotch Bakelite: 1 tray stamped Pearl", 1 rectangular box w/design scaling frame to top of lid, 1 brush, stamped "Acwalite", (bent/ broken bristles), 1 nail buffer, stamped "Velva Pearl", 1 pair scissors stamped "Pyr Mayflower", 1 round accessory box w/ lid, stamped "Made in Halex England", (all scratched/dirty), 2 boudoir prints under curved & painted glass in metal frame, all good-excellent. Set of yellow imitation guilloché enamel & brass toiletry set, L range 3"-13", Wd range 0.375"-5", (all w/ tarnish to brass & white powder pressed into grooves) all good.



170: TWO SHOE & ONE BELT BUCKLE, PARIS, EARLY 20TH C

USD 300 - 500

1 black velvet & marcasite stylized shaped bow motif shoe buckles, 2.75" x 1.5" x 1.5", (few missing stones, two 0.25" areas of crushed velvet on 1) very good; 1 pieced & carved MOP belt buckle set w/ six pointed star rivets, each side 1.75" x 2.75", (0.25" crack near inner edge, slightly dirty) fair; 1 set of silver tone & paste bead set shoe ornaments in strappeddiaper pattern pattern w/ stylized floral in interstices, stamped "Parisienne, 10", very good (all w/ scratching & light tarnish)



171: TWO PARTY DRESSES, AMERICA, 1950s

USD 300 - 500

1 cream organza dress w/ overall white double edged sheer ruffle appliqué, blue ribbon ruched ribbon appliqué over B, double fine corded strap, cummerbund W band w/ CB bow, pelton lining, 1960s, B 36", W 26", L 57", (broad discoloration, CB hook & eyerusted) very good; 1 cream Piña fiber strapless dress w/ Schiffl embroidered blue, green, purple & pink vine & floral motif, rayon underdress, 1950s, label "Yezzi Albany Pittsfield", B 34", W 26", L 45", (broad discoloration, tiny-2" spot stains, large tears to hem, missing right bone & left poking out, light embroidery wear) fair.

Annual Autumnal Elegance



172: THREE BLACK & BLUE COCKTAIL DRESSES, AMERICA, 1950-1960s

USD 300 - 500

1 black silk chiffon w/ sweetheart neckline, elaborately gathered bodice to form illusion braid, tucked sleeves, piped W, full attached calf length skirt, crepe underdress, label "Mollie Parnis New York, 935", B 34", W 25", L 43", (two 0.25" whitestains right sleeve) excellent; 1 navy crepe back satin sleeveless dress w/ cowl neck, label "Leo Narducci Ambiance", B 39", L 40", (hem altered & stitches visible) excellent; 1 black synthetic w/ bateau neckline, short sleeves, fitted W & flared skirt, label "B. Altman & Co. The Young Colony Shop", B 38.5", W 28", L 40", (tiny hole b/ right B seams & right SS, fraying bodice seam allowance, lining discolored) very good.



173: CEIL CHAPMAN SEQUIN & RHINESTONE EMBROIDERED PARTY DRESS, AMERICA, 1950s

USD 500 - 800

Silk organza princess line dress overlaid w/ embroidered mesh w/ gel sequins, rhinestones & faceted glass drops, bateau neckline, SS zip closure, pellon lining in skirt, bodice lined in silk organza, label "Ceil Chapman", B 35", W 25", L 42", (discoloration bands to skirt, tiny spot stains, light underarm stains, minor bead loss) excellent.



174: LILLI ANN EVENING COAT, AMERICA, 1960s

USD 400 - 600

Pattern weave cotton, silk & synthetic blend in Renaissance & Baroque leaf motifs, elbows length raglan sleeve w/ blond ranch mink cuffs, faux double breasted w/ white dome buttons, twill rayon lining, label "Lilli Ann, Paris, San Francisco", B 46", L 41.5", (0.75" stain back left sleeve & 0.25" right SH, wear to CF hem, few pulls, 2 functional buttons dirty, minor fur crushing) very good.



175: THREE PUCCI SILK BLOUSES, ITALY, 1960-1965

USD 500 - 800

Three identical shirts w/ same shirt collar, CF self-covered button closures & single button at shaped cuff, all w/ label "Emilio Pucci Florence-Italy, 100% Pure Silk": 1 purple & blue w/ dancers & border of drums & gourds, c. 1964, B 40", L 25.5", (light discoloration, underarm stains, few tiny-0.5" spot stains, minor shattering collar) good; 1 w/ green feather fan, cord & tassel motifs on cream ground, c. 1965, B 42", L 24", (light discoloration, few pulls, 1 button detached/incl) very good; 1 w/ purple & white overlapping circular motif, black marble w/ veining & gold & black based on 16th C manuscript border, c. 1960, B 40", L 24", (0.25" stain right armscye, 1 button detached/incl, tiny pulls) excellent, t/w 1 striped unlabeled sweater c. 1965. Museum at FIT.



176: FIVE MISSONI MOHAIR SWEATERS, ITALY, 1970-1988

USD 400 - 600

All mohair w/ turtlenecks & all but magenta sweater w/ label "Missoni Made in Italy": 1 magenta c. 1970, B 34", L 21.5" (unlabeled Missoni, light underarm wear); 1 blue-green c. 1978, label "Missoni for Bloomingdales", B 34", L 21", (few pulls, minor pilling, label detaching); 1 black & red w/ dense scrolling vine motif, c. 1988, B 40", W 24"-34", L 22", (pulls/pilling esp at SS's & sleeves); 1 pale yellow c. 1970, B 34", L 20", (few pulls, light 1.25" stain CF B); 1 black c. 1970, B 34", L 18.5", (label detaching, light underarm wear) all very good- excellent. Museum at FIT.



177: THREE PUCCI SILK JERSEY DRESSES, ITALY, 1965-1968

USD 800 - 1,200

All silk jersey w/ label "Emilio Pucci Florence-Italy, 100% Pure Silk": 1 in shades of pastel blue, purple, pink & cream w/ arabesque & swag border motif compartmentalizing floral motifs, glove length slvs, tie self belt w/ beaded tassles, c. 1965, B 32", W 31", L 40", (seam opening neckline, falling hem, sm repair left SH blade) good; 1 minidress in gothic trellis & stylized heraldic motifs on cream ground, V-neck, glove length slvs, c. 1968, B 36", W 32", L 36", (light stains, SS altered); 1 in shades of cream, pink & peach w/ central floral w/ vertical leaves edged w/ stylized drops, ocean motif skirt, fan motif border at edges, bishop sleeves w/ self-covered button closures, CB zip closure, c. 1965, B/W 37", L 35", (few spot stains) excellent. Museum at FIT.

Annual Autumnal Elegance



178: TWO THREE PIECE MISSONI ENSEMBLES, ITALY, 1966-EARLY 1970s

USD 600 - 1,200

3-pc c/o cotton blend multicolored architectural louvered motif skirt & button up & red rayon sleeveless top w/ checkered ribbon stripe motif, early 1970s, label "Missoni": button up B 35", L 24", top B 34", L 20", skirt W 28", L 42.5", (light discoloration, tiny-1" stains to button up, 1" pull above red top hem, 4" of hem undone at CF, tiny-0.25" spot stains skirt); 3-pc c/o striped rayon & cotton blend knit skirt & tank top, burnt orange rayon blouse w/ keyhole at CF, c. 1966, label "Missoni Made in Italy", shirt w/ label "Missoni Maglia Knitwear Tricot", striped top B 38", L 26", skirt W 34", L 27", shirt B 34", L 27", (tiny-0.75" stains to shirt, tiny pulls) all very good-excellent. Museum at FIT.



179: TWO IDENTICAL PUCCI ENSEMBLES, ITALY, 1962-1967

USD 800 - 1,200

Both 2-pc w/ cropped long slv top w/ 2 self-covered button closures & pants w/ palazzo style right leg into W wrap w/ bow at left H over slender left leg, both w/ label "Emilio Pucci Florence-Italy, 100% Pure Silk" & "Made in Italy Exclusively for Saks Fifth Avenue": 1 in collage of geometric shapes w/ scattered leaf & floral motifs in shades of blue & green, c. 1962, B 41", W 30", L 14", trouser W 28.5", L 44", inseam 28", (sm stain B, 12" hem falling 1 leg, seam stress at 2 W tacks, concealed but messy modification at CB W zip) very good & 1 cream ribbed silk, c. 1967, B 36.5", W 26", L 14", trouser W 24.5", L 42", inseam 27.25", (shattering wrist & pant cuffs, light stains, missing 1/2 snap B, sm tear pant W & wrap join, seam stress) good. Museum at FIT.



180: THREE PIECE MISSONI ENSEMBLE, ITALY, c. 1969

USD 500 - 800

3-pc lurex & rayon blend ensemble in 1920-1930s inspired complex cabbage rose motif w/ inserted miniature roses & classic ribbed knitted stripe motif c/o draped blouse w/ V-neck yoke, full sleeves into deep knit cuff, calf length skirt w/ knit W band & knit cardigan w/ patch H pockets, c. 1969, label "Missoni Made in Italy" and/or "Missoni for Bloomingdales Made in Italy": cardigan open B 38", L 29", top B 46", W 26"-32", L 23", skirt W 23.5"-32", L 35", (stains to labels, few pulls, W band on skirt modified) all pieces excellent. Museum at FIT.



181: TWO MISSONI ENSEMBLES, ITALY, c. 1970

USD 400 - 600

2-pc ensemble c/o wool & rayon knit short sleeved jacket in green & blue square grid motif w/ inlaid belt, CF button closure & patch pockets, blue rayon & cotton interrupted twill trousers, c. 1970, label "Missoni Made in Italy, Lavare A Secco": top B 36"-44", W 26"-30", L 28", trouser W 23"-34", L 36.5", inseam 26", (pilling at SHs) excellent-pristine; 2-pc ensemble c/o wool & rayon diagonal red knit top w/ bateau neckline, batwing sleeve & waist wrap into front tie, navy blue rayon interrupted twill trousers, early 1970s, label "Missoni": top B 36", W 26", L 22", trouser W 24"-32", L 45", inseam 31.5", (W band elastic casing seam undone, 3 seam openings W band lining & 1" seat, pant unlabeled) top excellent, pant good-very good. Museum at FIT.



182: TWO THREE PIECE MISSONI ENSEMBLES, ITALY, 1972-1973

USD 500 - 800

3-pc knit ensemble c/o ribbed cream camisole & skirt w/ T-shaped long sleeve rainbow rayon & cotton knit cardigan w/ patch pockets, 1973, label "Missoni Made in Italy": sweater open B 34", L 27", top B 27"-38", W 22"-30", L 23", skirt W 23"-40", L 27.5", (labels detaching, few pulls) all pristine-excellent; 3-pc blue & red wool plaid c/o shell w/ wide cummerbund style ribbed W band, knee length skirt & jacket knitted on the straight w/ turn back lapels, matching belt w/ composition buckle, c. 1972, label "Missoni Made in Italy": jacket SH-SH 17", B 35.5", W 31", L 26", sleeveless top B 31"-36", W 26"-32", L 20", skirt W 34"-38", L 25", (minor pilling, few scratches to belt, light stains to W band lining) very good. Museum at FIT.



183: PUCCI DRESS & THREE PIECE ENSEMBLE, ITALY & AMERICA, 1965-1969

USD 500 - 800

1 cotton velveteen sleeveless dress in diamond mosaic pattern overlaid w/ leaves, flowers & stems of pink, green & white on black ground, lower border in mosaic squares w/ central floral & bud motifs, V-neck, CF zip, c. 1965, label "Emilio Pucci Florence-Italy, 100% Pure Cotton" & "Exclusively for Saks Fifth Avenue Italy", B 34", W 27", L 56", (discoloration, tiny spot stains, zipper modified) very good; 3-pc quilted ensemble in blue & purple embroidered in black chainstitch c/o jkt, vest & ankle length skirt, c. 1969, label "Created by Emilio Pucci for Formfit Rogers", coat B 42", W 40", L 19.5", top B 38.5", W 36", L 17.5", skirt W up to 35", L 38", (missing stitches coat B, collar & top H, tiny-4" stains, elastic replaced, two 1.25" holes CB W) good. Museum at FIT.

Annual Autumnal Elegance



184: PUCCI SILK CLOQUE DRESS, ITALY, c. 1970

USD 800 - 1,200

Silk jersey w/ stylized cock motif in shade of orange, peach, pink & yellows, scoop neckline, extended front panel to drape between legs & gathered into back scoop neckline, c. 1970, label "Emilio Pucci Florence-Italy, 100% Pure Silk, Made in Italy", unstretched B 33", W 28", L 52", Editha Dussler is wearing Emilio Pucci's violet cloque silk dress, photo by Irving Penn for Vogue, 1965 (darts at CF B & torso altered & stitch marks visible, few tiny pulls, two 0.5" stains lap) excellent. Museum at FIT.



185: HALSTON CASHMERE SHEATH DRESS, 1970s

USD 400 - 600

Black sleeveless cashmere sweater sheath dress w/ rib knit at neckline & armhole, label "Halston Made in Scotland, 100% Pure Cashmere", unstretched B 32, W 30", L 56", (several tiny-5" openings around hem) excellent.400



186: YSL BLACK SILK ENSEMBLE, PARIS, 1970s

USD 400 - 600

Ensemble c/o quilted silk velveteen coat w/ mandarin collar, slash H pockets & self covered buttons & satin back crepe slacks, label "Saint Laurent Rive Gauche, Made in France", coat B 41", L 33", pant W 24.5", L 44.5", inseam 32", (few patches of undone quilting stitches, label discolored, wear to buttons/loops, tiny-0.5" stains right sleeve, missing hooks at pant W closure, 0.5" hole right inseam, seat inseam pulling, 1" & 0.5" stains seat, paint on zip chipping) both good.



187: TWO DESIGNER EVENING DRESSES, AMERICA, 1970-1980s

USD 400 - 600

1 w/ Kashmir inspired floral, foliate & arabesque motifs printed on grey wool blend tricot ground embroidered w/ short bugle & crystal beads in shades of orange, coral, pink & iridescent, label "George Halley New York", B 37", W 26", L 59", (minor bead loss, self-slip hem falling for 12" CF, 4" seam opening right armhole lining) excellent; 1 long sleeved blue silk satin dress w/ dense sequined front panel, lined in silk crepe, label "Galanos" & "Bonwit Teller", B 34.5", W 26", L 55.5", (belt missing w/ tack present CF W, right cuff unfinished, sequin wear) excellent.



188: GIVENCHY QUILTED SILK COAT, PARIS, 1970s-1980s

USD 300 - 500

Black glazed cotton coat quilted in diamond pattern w/ tie self-belt, faux fur collar, CF opening & cuffs, inserted tab closure w/ composite barrel buttons, label "Boutique Givenchy Paris", B 44", L 43", (crushing to fur, few tiny pulls/missing stitches, few tiny-0.25" lining stains) excellent.



189: OSCAR DE LA RENTA STYLIZED TAILCOAT, MODERN

USD 300 - 500

Brown velvet coat w/ notched collar, 2 CF buttons closures, tabbed H pockets, princess w/ skirt cut in 2 panels over Hs left & right, back W ties, label "Oscar de La Renta", B 38", W 33", L 50", (patches of light crushing throughout esp to left side of lapel at buttonholes) excellent.



190: BARBARA MATERA QUEEN OF THE NIGHT COSTUME, NEW YORK, 1985

USD 800 - 1,200

3-pc black & silver ensemble c/o silver lame coat w/ domed buttons, iridescent paste crystals & collar w/ 3D sequins, trained lame gown of silk edged black lace over silver lame w/ architectural SHs, black & crystal beads, silver drops, paillettes, iridescent shell paillettes & 3D sequins, buckram & lame net hat, for Cleveland Orchestra 1985 production of The Magic Flute, conductor Christoph von Dohnanyi, costume design Judith Dolan, Queen of the Night singer Celina Lindsley, label "Barbara Matera Ltd. New York" & "Miss Lindsley", coat B 50", W 48", L 60", gown B 40", W 30.75", L 59-89", hat label "Woody Shelp", (closures rusty/detaching, few pulls, light stains, 2.5" hole dress H, elastic loops shot, few beads missing) all very good. A.T. Jones & Sons.

Annual Autumnal Elegance



191: TWO SILK EMBROIDERED PANELS, INDONESIA & INDIA, EARLY 20TH & EARLY-MID 19TH

USD 300 - 500

1 silk warp face stripe w/ gold-tone metallic embroidery & sequins, Indonesia, 47.5" x 51.5", (pulls, edges raw, light wear, 2" repair center, some embroidery loss) good; 1 chainstitch embroidered silk pieced panel, India, early-mid 19th C, 35.5" x 75", (4 repairs near center, weft loss, few tiny holes/spot stains) fair.



192: THREE HOUSEHOLD HANGINGS, GUJARAT, EARLY-MID 20TH C

USD 400 - 600

All embroidered & w/ mirror work: 1 large Phulkari embroidered hanging w/ 7 heavily mirrored tabs, open ladder stitch embroidery, early 20th C, 53" x 34", (tiny-0.5" holes); 1 pink & red embroidered hanging w/ birds, flowers & cows, w/ recycled 19th C tabs embroidered w/ mirrors, sequins & beads, 44.75" x 21", (missing sequins); 1 large square hanging w/ magenta Phulkari embroidery, 44.5" x 44.25"; (all w/ embroidery wear, damaged/tarnished mirrors, general wear, stains & discoloration) all fair-good.



193: TWO BROCADED SILK PANELS, PERSIA, EARLY 19TH C & 18TH C

USD 400 - 600

1 blue & cream brocade w/ block printed flowered boteh backing, Early 19th C, 28.5" x 26", (wear, shattering to binding, few pulls) good; 1 dark blue w/ metallic brocade, appliqué silk brocade border w/ bird & flower motif probably 17th C, panel 18th C, lined w/ silk sarcenet, 40" x 42", (backing stained, light wear, border worn, 2.5" red stain near top edge) very good.



194: METALLIC & SILK THREAD EMBROIDERED PANEL, MID 19TH C

USD 300 - 500

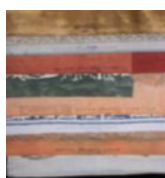
Robins egg blue wool panel w/ metallic & silk embroidery in symmetrical boteh motif extending from corners, metallic fringe, 39" x 51", (embroidery loss, fading/discoloration, 1"-6.5" seam openings edge, tiny-1" spot stains, 1.25" repair near edge) fair.



195: LARGE TAPA CLOTH PANEL, POLYNESIA, EARLY 20TH C

USD 300 - 500

Bark cloth panel w/ both printed & hand drawn motifs, 91" x 160", (some separation b/t panels, minor paint cracking, creasing, some fraying at ends) very good. Ohio State Historic Costumes & Textiles Collection.



196: FORTUNY STENCILED COTTON TEXTILE SAMPLES, ITALY, 1950-1967

USD 300 - 500

All but 1 stamped "Made in Italy, Mariano Fortuny Venezia Depose", L range 26"-57", Wd range 27"-73": 1 dark green & white; 1 matte gold & metallic silver "Carnavalet Gold Museum"; 1 "Carnavalet French Blue & Gold", (light stains, 5"x3" swatch removed); 1 "Delfino Melon & Silver", stamped "Fortuny Inc. 1960"; 1 "Pergolesi Blue & White", (dye bleed); 1 pale blue/green w/ gold stenciling; 1 "Festoni Pomegranate Red & Silver"; 1 Trianon Pale Blue & Silver", (inking 1 edge); 1 "Edera Pompeian Pink & Silver", (some w/ light discoloration, tiny spot stains &/or few pulls, all w/ raw edges) all good-excellent. Ohio State Historic Costumes & Textiles Collection.



197: SILK HEXAGON QUILT, c. 1900

USD 200 - 400

Constructed of silk dress material some w/ woven patterns & some printed w/ variety of silk embroidered feather stitching, 60" x 46.5", (significant areas of shattering) poor.

Annual Autumnal Elegance



198: NINE FINE LACE & EMBROIDERED HANDKERCHIEFS, 1890-1920s

USD 300 - 500

All most linen w/ range 9.5"-12.5" x 9.5"-12": 1 crepe chiffon w/ embroidered net corners, (few light spot stains); 1 larger linen w/ tape lace, (few tiny holes/spot stains); 1 linen w/ Brussels mixed lace border, (light stains); 1 linen w/ wide tapelace border & needlework brides & fillings, (few broken brides/minor pulls/fraying); 1 tea dyed linen w/ tape lace border, (light stains); 1 linen w/ chemical lace; 1 linen w/ manipulated tape lace edging & oval chemical lace insertions, (minor fraying); 1 Madeira embroidered w/ drawn thread work & needlelace fillings, (few tiny spot stains); 1 linen w/ embroidered net edging.



199: TWO EMBROIDERED TABLE COVERS, EARLY 20TH C

USD 300 - 500

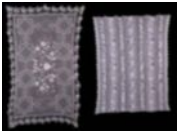
1 w/ 2 complimentary floral bud & leaf motifs in geometric frame in alternating squares of darned fillet & embroidered linen w/ drawnwork & gray pearl cotton embroidery, 68" x 102", (light tiny spot stains, 1.25" light stain right bottom corner) excellent; 1 w/ Italian cutwork, drawn work, needle lace & embroidery w/ fillings, 66" x 100", (light wear, stain clusters to corners) very good.



200: LACE & EMBROIDERED TABLE COVERINGS & CURTAINS, EARLY 20TH C

USD 400 - 600

1 embroidered linen table covering w/ 18th C revival fillet, embroidered cutwork & drawn thread work, insertion & scalloped border in fillet late w/ triple rose motif, early 20th C, 89.5" x 128.5", (tiny-0.5" spot stains, broken brides & pulls) very good; 1 pre-embroidered ramie table covering w/ rose & grape motif, 64.25" x 99.5", (general light wear, 0.25" rust stain 1 corner) very good; 2 matching curtain panels w/ drawn thread work, bobbin lace insertions, embroidered butterflies & eyeletembroidered scattered center motif: 1, 49" x 97", (light wear, ends raw, tiny holes, 0.75" repair 1 corner, broken brides); 1, 48" x 90.75", (2 short ends raw, light wear, tiny spot stains & holes) both good.



201: TWO EXCEPTIONAL FILET TEXTILES & ASSORTED HOUSEHOLD TEXTILES, EARLY 20TH C

USD 400 - 600

1 filet bedcover w/ padded stitch appliqué & roses, Islamic star motif in fillet, heavy padded stitch floral border, c. 1910, 65.5"x74.5", (tiny pulls, broken brides); 1 filet curtain w/ central bands of perched birds, menagerie & floral bands, double hpinlace insertions between figural fillet bands, 53.5" x 78", (pulls, few broken brides, light wear) both excellent; 1 large cylindrical linen lampshade cover composed of panels of bobbin & fillet lace, floral cut work, embroidery & tassels, 27.5"x97", (light wear, discoloration) very good; 1 filet crochet valance, Wd 12.5"-16", L 44.75", excellent; 1 linen custom valance w/ embroidered cut work & inserted fillet panels w/ grapevine motif, small needlelace edge, Wd 13.5", circ 69.5", (small holes)



202: TAMBOUR EMBROIDERD SILK BEDCOVERING, c. 1800

USD 500 - 800

Silk tambour embroidery on hand drawn tree of life w/ branches, roses & stylized ribbon tie at base on yellow silk ground, early 19th C, 65" x 84.5", (shattering to yellow silk, embroidery loss, broad light staining/discoloration, tiny holes, 3.75", 2" & 1" repairs near center, re-backed at later date) fair. Ohio State Historic Costumes & Textiles Collection.



203: MASSIVE COLLECTION JACOB GOLDMAN FASHION EMBROIDERY SAMPLES, NY, 1940-1970s

USD 3,000 - 5,000

Archive c/o 12 boxes of embroidery samples 1940-1980s & 2 books w/ rubbings of each design, designer notes & dates of commission, L 16.75" , Wd 11", in as is condition. 710 embroidery samples, Wd 1.75"-27", L 8"-39", good-pristine: 1 box Oscar de la Renta, 1980-81 & 1983-85; 2 boxes various designers incl Bill Blass, Beene, Calvin Klein, Mollie Parnis, Scaasi, Judith Leiber, Oscar DLR, Carolyne Roehm, Anne Klein, Adele Simpson, Harve Bernad, Rina di Montell, Richilene & Gloria Sachs, 1 box w/ samples from 1980-87, other w/ 92 from 1970-79; 1 box of 60 w/ few for Nat Kaplan & Carolyn Roehm, 1950-60s & 1985; 6 boxes unlabeled samples: 1 dated 1970, 1971 & 1978, 1 dated 1970-78, 1 dated 1980 & 1985, 1 dated 1950-70, 1 dated 1939-1965, 1 dated 1960-70. Jacob Goldman Archive. Museum at FIT.

Annual Autumnal Elegance



204: ELEANOR LAMBERT PRESS MATERIAL ARCHIVE, NEW YORK, 1965-1999

USD 3,000 - 5,000

Two document boxes: 1 containing 26 files w/ 264 photos & documentation, New York Dress Institute Collection Press Material Duplicates, size range 8?x10?-8.75?x11?, containing A/W 1965-S/S 1971 for designers including: Parnes Feinstein, Paul Blumenstein, Branell, Harvey Berin, Countess Alexander, Davidow, Larry Aldrich, Montgomery Ward, Burke-Amey & 1 containing 40 files w/ 807 documents, press materials incl runway packets, designer portraits & fashion photos, 5.25"x8"-12.5"x22.25", from S/S 1982-A/W 1999 for designers & publications including: Oscar De La Renta, Carolina Herrera, Sybill Connolly, Ben Zuckerman, Geoffrey Beene, Bill Blass, Natori, Harry Winston, Isabelle & Ruben Toldeo. All very good-pristine. Eleanor Lambert Collection. Museum at FIT.



205: CHANGEANTE SILK DAY DRESS, c. 1846

USD 400 - 600

Green & gold shot silk dress w/ deep pleats into SH & W, CF ruched panel over hidden hook & eye closures, neck, armscye, bell sleeve & W piped, faux cap & bell sleeves w/ ruched edging, full cartridge pleated skirt, broad cotton hem facing. B 34.5", W 25.25", L 57", (heavy stains/wear to underarms, stains/fading throughout, wear to W seams) fair. Ohio State Historic Costumes & Textiles Collection.



206: PRINTED COTTON DAY DRESS, MID 1850s

USD 800 - 1,200

White cotton printed w/ lavender stylized blossom motifs arranged in diagonal grid, bodice shaping entirely accomplished by gathering into horizontal bands at bateau neckline & W, short double bias sleeve w/ fine pleated ruffled edging, CB closure, full attached skirt, B 36.25", W 26.5", L 53"-56", (3" x 1" period repair to CF lap, light wear/stains to underarms, few scattered tiny spot stains, few scattered pinholes, 0.5" hole back right W, 2 small period repairs to seat) excellent.



207: TWO PRINTED WOOL OR COTTON WRAPPERS, 1860s

USD 500 - 800

1 resist dyed & block printed wool wrapper w/ matching SH capelet in dense foliate frond motif on lavender ground, collar, front opening, W band, cuffs, pocket & capelet trimmed w/ bags wool braid, abalone CF buttons, B 35", W up to 29", L 57.5", cape SH-SH 17", L 17", (some tiny patches of shattering/stress, tiny-0.25" holes) good; 1 block printed cotton wrapper in paisley, insect & avian motif w/ narrow band collar, 2-pc sleeves, CF self-covered dome buttons, inset H pockets & cuff edged w/ black & aqua silk taffeta w/ decorative buttons at pocket, B 38", L 50.5"-55", (collar & hem saver very worn, shattering to cuff bindings, 1" split at lap) very good.



208: TATTERSALL SILK DAY DRESS, EARLY 1850s

USD 500 - 800

Cream silk day dress woven in red tattersall w/ bodice shaping entirely accomplished by gathering into horizontal bands at bateau neckline & W, short fly sleeves, piped armscye & neckline, fitted cotton underbodice & skirt lining, B 31", W 23", L 51", (light stains/wear to underarms, light tiny-sm spot staining throughout esp to W & lap, 1" seam opening right front W, 1" tear to back W seam, 0.75" hole left W, closure tarnished & modified, 2" seam stress at neckline near left SH) good.



209: ROLLER PRINTED COTTON DAY DRESS, 1855-1865

USD 500 - 800

Entirely hand sewn red & cream cotton day dress w/ ribbon stripe & berry motif, self collar, cuff & W band, cartridge pleated off the SH bishop sleeve & at back W, CF closure, wool hem saver, B 45.4", W 26", L 56", (hem saver very worn, all CF closures except W missing, 1"-4" repairs, 2.25" tear CB W) very good. Ohio State Historic Costumes & Textiles Collection.

Annual Autumnal Elegance



210: TWO BROWN SILK DAY DRESSES, LATE 1870s

USD 500 - 800

2-pc in brown silk taffeta w/ yellow, black & red shadow check, Basque bodice w/ 2-pc shaped sleeves, brown satin edged piccadill tabs, at cuffs & in escalier at skirt front w/ decorative satin covered domed buttons, CF faceted French jet ball buttons, BB 37", W 27.75", L 20"-24", skirt W 27.25", L 41.5"-50", (pinholes, 1" repair skirt W, hemsaver wear) excellent; 3-pc brown silk taffeta, fitted bodice w/ tabbed peplum, cuffs & overskirt edged w/ brown silk velvet ribbon, deep hem ruffle w/ double row of velvet ribbon, B 36", W 24.5", L 22.5"-25", skirt W 24", L 40"-42", overskirt W 24.5", L 20.5", (trim wear, light stains, left SH & slv, seam openings left W & overskirt closures, some trim undone, W band pleating altered, few holes/shatter spots) fair.



211: TWO SILK EVENING MANTLES, 1880-1890s

USD 300 - 500

1 cream novelty weave taffeta w/ a raised serpentine rib, Corelli embroidered body in Medieval manuscript border motif, silk twill ribbon & thread fringe to collar, cuff & hem, row of silk covered graduated wooden beads w/ knots, B 42", L 25"-35", (sleeves shattering, tiny-0.25" holes, wear, few missing closures); 1 black silk plush dolman w/ self-covered glands, silk lining quilted in chevron pattern, SH-SH 17", B 36", L 26"-33", (velvet wear, few missing baubles, 1" right sleeve & cape join, worn cuff binding, 1.75"-6" seam openings/tears) both fair. From the Collection of A.T. Jones & Sons.



212: TWO EXCEPTIONAL BEADED CAPLETS, 1880s

USD 500 - 800

1 black silk ottoman embroidered w/ short bugle & seed bead in floral & arabesque motifs, CF hook & eye closures, extended dramatic fringe mirroring deep V of yoke in alternating 4 strand grouping of short bugle & seed beads, SH-SH 16", CB L 12.5" w/ 8.5" beaded fringe, (lining shattering, shattering patches, minor bead loss, missing/ detaching closures, inner collar separating/shattering) fair; 1 black velvet SH capelet embroidered w/ stylized tulips & lobed frond motifs radiating from CF opening & at CB in variegated seed, bugle & faceted iridescent beads, standing collar, CF hook & eye closures, netted & beaded SHs w/ short beaded fringe, SH-SH 14", L 15"-23", (bead loss, lining shattering, missing & rusted CF closures, collar worn) good.



213: PATTERNED SILK & VELVET EVENING GOWN, c. 1888

USD 600 - 800

Cream pattern silk evening gown w/ swag & floral sprig motif, fitted bodice w/ stock collar, point de gaze yoke insertion, burnt umber silk velvet plastron, insertions to either side of bodice front & as exposed & hidden facing to asymmetrical trained skirt, lame wrapped silk cord & beaded appliqués & tassels throughout, B 40.25", W 27", L 56"-73", (zipper & CF B panel added, bead loss, tarnish, stained/worn underarms, heavy wear to lace neckline, lining trim detached & shredded at back, light hem stains) good.



214: THISTLE PATTERNED SILK EVENING GOWN, c. 1888

USD 800 - 1,200

One piece gown w/ silver & gold tone lame thistle motif on cream silk satin ground interspersed w/ ribbon striped & interrupted raised rib cream silk, fitted bodice w/ needlelace neck ruffle, flat SH bows & chatoyant short bugle bead & multicolored faux pearl strands to neckline & SHs, trained skirt w/ asymmetrical front panel & hanging side panels terminating in lame beaded tassels, B 36.5", W 27.5", L 53"-60", (significant bead loss, shattering to front panel & same material at SHs, metal closures oxidizing & w/ transfer stains, lame tarnish, hem stains) good.



215: SILK TAFFETA DAY DRESS, c. 1890

USD 500 - 800

2-pc cafe au lait silk taffeta w/ gathered black silk satin front panel edged w/ applied satin backed self ruffle & also at either side of skirt & around hem in imitation of open robe style, modest engageante cuffs of re-embroidered cotton net w/ applied bell florals, black silk satin turn back cuffs & W band into flat bow at CB w/ steel marcasite decorative buckles front & back, 37.5", W 28", L 18", skirt W 26.5", L 43"-47", (stained/worn underarms, scattered tiny spot stains, 8.5" closure seam coming undone CF, tarnish, lace cuff wear & few small holes, 1.5" tear back left skirt W) very good.

Annual Autumnal Elegance



216: SILK OTTOMAN AFTERNOON DRESS, c. 1900

USD 400 - 600

Brown silk ottoman w/ cream silk taffeta & w/ brown silk woven passementerie overlay to stock collar, yoke, W, lower sleeve band & cuffs, bodice w/ draped panel gathered into half bow at left SH over semicircular panel faced w/ glazed cotton buckram, skirt stiffened w/ buckram & lined in glazed printed striped cotton, B 36.5", W 22", L 16.5", skirt W 21.5", L 40-42", (collar detaching, taffeta lining shattering, light underarm stains, 3" seam opening below skirt closures, stained hem) very good.



217: PRINTED BAREGE DAY DRESS, c. 1903

USD 500 - 800

2-pc printed barege dress w/ detachable stock collar w/ scarlet silk chiffon panache at CB, bodice w/ vertically pieced yoke, CB & upper sleeves w/ scarlet silk fagoting, shaped silk taffeta bands over B in monobosom, fitted bishop sleeves w/ applied silk bands & deep priced cuff w/ fagoting, slightly trained skirt w/ horizontal scarlet silk bands, B 40", W up to 29.5", L 18", skirt W 23", L 43"-53", (minor wear/fraying to fagoting, underarm & ribbon stains, tearing/discoloration collar lining, 1 missing set of collar closures, hem stains, scattered tiny-sm stains, 0.5" worn spot on bodice at W) very good.



218: BLACK LACE & SILK VELVET EVENING DRESS, c. 1906

USD 500 - 800

2-pc black lace gown w/ stylized burst motifs & fronds on square mesh ground to bodice, at shaped hem flounce & Hs, appliquéd Chantilly cartouche motifs to bodice neckline & below W, ruched long sleeves, applied black silk velvet ribbons to bodice SHs & vertical bands & as horizontal delineation on skirt, black silk velvet W band w/ double black lace rosette at CB w/ paste centers, all over cream silk chiffon on silk taffeta, B 41.75", W 30", L 15.5"-17", skirt W 30", L 37"-47", (shattering in lining at bodice SHs & throughout skirt, 1.5" repair right sleeve, few light spot stains B, scattered pulls & sm holes to net in skirt) good.



219: MIXED LACE & EMBROIDERED TEA DRESS, c. 1908

USD 500 - 800

Irish crochet yoke, sleeves & skirt insertion, Val lace bodice & skirt overlay edged w/ openwork crochet leaves, net cap sleeves & tiered, scalloped skirt w/ cutaway inverted V at CF to reveal Irish crochet CF panel & hem, B 34", W 29.5", L 58", (few tiny-0.25" spot stains B & lap, 1"-2" light stains around hem, broken brides, light underarm stains) excellent.



220: CALLOT SOEURS EVENING GOWN, PARIS, c. 1905

USD 4,000 - 6,000

2-pc cream silk satin gown w/ round collar & CF B panel w/ rows of faux pearls each encircled w/ metallic bullion, yoke & B flounce of tambour embroidered silk tulle, CF & CB w/ symmetrical leave motifs of stuffed crimped metallic bullion/ metallic seal beads, full trained bell shaped skirt w/ deep pleated chiffon gores, label "Callot Soeurs", B 39", W 23.25", L 16", skirt W 23.5", L 41.5"-51.5", (underarms, SHs & W line shredded, bead loss, tarnish, underarm pad filling leaking, stains, skirt lining shredded, W band heavily worn & shattering at closures) bodice poor, skirt fair. Ohio State Historic Costumes & Textiles Collection.



221: CUT VELVET EVENING GOWN, c. 1907

USD 500 - 800

Evening gown of cut velvet on silk ground in black & white rose motif, bodice yoke of silk chiffon lined in silk taffeta w/ black re-embroidered chemical lace, CF & CB of bodice, sleeves & godets of black silk velvet w/ embroidered floral appliquéd overlays, black silk taffeta hem facing, bodice lined in silk, B 40", W 30", L 17"-20", skirt W 30", L 41"-51", (tear covered by lace right sleeve, lining shattered w/ visible patches underarms, sleeves shattering & skirt W band, 5.5" & 2.5" torn seams right underarm, light discoloration) fair.

Annual Autumnal Elegance



222: ONE RIDING & TWO SILK VELVET EVENING JACKETS, c. 1893 & 1910-1930s

USD 300 - 500

1 black silk velvet w/ heavily ruched shawl collar & cuff, 2 CF flat jet button closures, lined in crepe back silk satin, 1910s, label "Hutzler Brothers Co. Baltimore", B 42", L 30", (bead disease, inside ties damaged & lining stained, minor crushing) very good; 1 ecru wool twill boned riding jacket w/ deep winged revere collar, leg o? mutton sleeve & diagonal bound slit pockets, lined in cotton twill, 1893, open B 34", W 29", L 27", (tiny-1" stains, wear spots, discoloration, 0.75" seam opening leftcuff, pulls) good; 1 black silk velvet w/ asymmetrical draped front panel & finely ruched SH caps, lined in black silk crepe, 1930s, open B 44", SH-SH 17", L 26", (minor crushing, pulls) excellent; t/w silk velvet jacket. A.T. Jones & Sons.



223: THREE LADIES DAY COATS, 1910s

USD 300 - 500

1 cream cashmere day jacket w/ navy pattern damask to large revere collar & deep faux sleeve cuffs w/ row of decorative faceted brass buttons & also at faux back pockets, passementerie closure, lined in cream silk, B 43", L 26", (tiny-1.5" holes/snacks, spot stains, seam openings lining); 1 silk & cotton blend coat w/ black silk Ottoman collar reverses & cuffs, black rimmed self buttons to collar, cuffs & at CF, knotted corded epaulettes w/ St. Francis knots on SH cape, knotted & corded back half belt, B 48", W 34", L 36", (13"x1.5" stripe of stains right side, light stains); 1 khaki wool twill frock coat lined in silk satin, label "Friedman & Abler Baltimore, MD", B 38", W 35", L 34", (taken in at SS, tiny-1" wear spots) all good. A.T. Jones & Sons.



224: POIRET INSPIRED EVENING COAT, 1910s

USD 400 - 800

Black cotton velveteen Poiret inspired evening wrap coat w/ lame bobbin lace & black silk woven trim to asymmetrical collar & cuffs, dusty rose silk satin lining w/ interior pockets, CH 56", L 51", (lining damaged/1 pocket reattached, tarnish, small-5.5" holes in lace, hook & eye loops worn) good. From the Collection of A.T. Jones & Sons.



225: TAPE LACE COAT, c 1908

USD 1,200 - 1,500

Tape lace coat w/ needlework ?buttons? & fillings, worked soutache trim, turks head knots & glands at throat & CB W, 2 soutache basket weave covered buttons at turn back reverses, open B 32", L 44", SH-SH 17", (discoloration to baubles/buttons, laundered but not bleached, few pulls/broken brides) excellent.



226: AESTHETIC MOVEMENT EVENING COAT, 1910s

USD 500 - 800

Fine wool broadcloth evening coat w/ black silk taffeta collar w/ south cording & imitation macrame chemical lace to front & back yoke, attached bands at sleeves w/ falls & at either side of CF opening w/ black silktaffeta floral puffs w/ chemical lace centers, label "Peter Robinson Oxford St. London W", B 68", L 50", (discoloration, CF facings shattered/mostly missing, scattered tiny-0.5" holes, some pulling/wear to macrame trim & fringe, 0.75" seam opening rightarmscye & 0.5" opening left armscye) good. From the Collection of A.T. Jones & Sons.



227: SECESSIONIST INSPIRED WOOL BROADCLOTH & SILK VELVET COAT, c. 1912

USD 300 - 500

Fine wool broadcloth & brown silk velvet inserted godets to collar, across SHs front & back & at top of flared lower sleeve, brown silk velvet pleated & gathered modified cravat around collar, cross over front w/ 4 composition button closures, lined in half silk sateen, B 44", L 57.5", (button loops replaced w/ elastic, velvet wear, many tiny-0.5" spot stains, small holes throughout, hem dirty, 1" repair above hem, light stains across B, 0.5" repair CB neckline) fair.

Annual Autumnal Elegance



228: TWO MONOBOSOM TEA GOWNS, 1904-1908

USD 300 - 500

3-pc of printed linen lawn w/ cotton ruffles, yoke of Tenerife style needlelace, petticoat of linen w/ Heilmann flounce, B 73", W 32", L 18", skirt W 30", L 42"-49", petticoat W 27.5", L 42.5", (bodice hem raw, discoloration, stains from oxidization, 2long pulls CB W, skirt hem stained, 0.5"-3" light stains lap, tiny-0.5" spot stains throughout, 1"-3" areas of torn lace petticoat hem) fair; 2-pc white monobosom gown of open weave silk gauze w/ stock collar & yoke of mm lace into wide ruched band, balloon sleeve w/ fitted cuff, full trained skirt, label "Maison Freyling Robes", B 35", W 24.5", L 19", skirt W 23", L 43"-62.5", (shattering throughout, 0.25"-0.5" stains, underarm & W band stains) poor.



229: SILK SUMMER DAY DRESS, c. 1912

USD 400 - 600

Sheer silk w/ woven stylized spot leaf motif, square neckline edged w/ bands of copper silk satin & mm embroidered square ground gauze, decorative satin covered buttons to either side of front, at SHs & back W, sleeves tucked along length of inner arm for controlled fullness, underdress w/ linen w/ crochet flounce, B 54.5", W 29", L 57.5"-61", matching underdress B 43", W 34", L 56", (trim, collar backing & button coverings shattering, pulls, tiny spot stains, 2.75" & 3.25" stains CF B, few tiny holes, topmost flounce of underdress removed w/ tiny-0.25" holes/spot stains, CB lace trim & hem torn w/ several holes, SH discoloration) good.



230: TWO TEA DRESSES, 1910s

USD 300 - 500

1 cotton net w/ Heilmann embroidered openwork panels in vegetal motif to bodice, cuffs & as applied ruffles at SH & as flounce & hem on skirt, ?V4888" inked inside W band, B 35.5", W 26", L 58", (underarm stains, small holes/stains/repairs to skirt, two 1.5" repairs CF neckline) good; 1 cotton mull w/ bobbin lace insertions & trim, crochet faux buttons to neckline, fine tucks over SHs & hips, B 50.5", W 29.5", L 49"-51", (small seam opening to armscye, very light 2" x 0.75" stain lap, 2" repair & wear to bottom of closures) very good.



231: TAPE LACE & CHAINSTITCH EMBROIDERED EVENING GOWN, c. 1912

USD 500 - 800

Tape lace & chainstitch embroidered evening gown in floral & vine motifs w/ needlework fillings over silk satin underdress, CF B & silk taffeta SH bands embroidered w/ faux pearls in various shapes & sizes, bell shaped & trained skirt, hem faced w/ wool flannel, B 36", W 28", L 59"-79", (lining damaged, minor bead loss, trim shattering SHs & neckline, 0.5", 1.75" & 3" holes left underarm, few scattered tiny-0.5" holes in net) fair.



232: DIRECTOIRE INSPIRED EVENING GOWN, BRUSSELS, c. 1912

USD 800 - 1,200

Chinese patterned damask evening gown w/ seed bead & silk floss embroidery to grey silk chiffon at B, CB, cuffs & overskirt panels front & back in rose motif, faux fishcu & skirt panel edging of embroidered net, sleeves of embroidered raw cotton, oval damask covered faux buckle at CB w/ gathered grey chiffon ruffles, damask W band w/ self covered decorative buttons at Hs, label "Maison Freyling Robes, Bruxelles", B 41.5", W 33", L 55.5"-67", (1.75" & 1" holes left SH, pulls, few 0.25"-2" holes throughout, spot stains, light discoloration) very good.



233: ONE EVENING & DAY DRESS, LATE 1910-EARLY 1920s

USD 300 - 500

1 black silk & cotton net over silk satin underdress w/ mm black lace insertions at CF & CB of bodice in deep V backed w/ cream silk & as insertion along sleeve from SH to wrist, B 44", W 40", L 58", (1" repair & 0.75" hole left H, tiny-0.25" holes in net, 0.5" repair CB W, two 1" holes SH blades); 1 brown silk crepe de chine dress w/ chainstitch embroidery to blouson bodice & lower half of skirt, slight V-neck, dolman sleeve, gathered elasticized W, B 46", W 24"-40", L 50", (tiny holes, light wear, some missing stitches at hem & W band, 0.25" repair neckline, 3" cluster of tiny-1" holes CB hem) both fair. Sam Houston State University.

Annual Autumnal Elegance



234: TWO SUMMER DRESSES & ONE COAT, LATE 1910- 1930s

USD 300 - 500

1 pink cotton georgette day dress w/ dolman slv, deep CF V w/ draped reverse over closure & false front panel, obi style W wrap & appliqués to SHs & around skirt of cotton sateen basket weave printed motif, late 1910s, B 34", W 30", L 49", (tiny-0.5" stains, few tiny holes, 4" narrow stain & wear at seat) good; 1 black silk crepe summer coat w/ CF neck tie w/ lobbed termination, self appliqué w/brown silk topstitching throughout in same motif, bishop slvs, let out box pleats from W for fullness around skirt, SH-SH 17", L 45", (few tiny holes/pulls, 1" seam opening left W) very good; 1 limoncello Pina fiber dress w/ square neckline, short puff sleeves, full ankle length skirt, B 38", W 32", L 56", (tiny-1.5" stains) good. Sam Houston State University.



235: TWO VELVET & CREPE DRESSES, 1920-1930s

USD 300 - 500

1 brown rayon crepe dress w/ draped silk crepe voided velvet pelerine collar in frond motif w/ attached front panel into extended back W tie, B 37", W 37", L 50", (0.5" stain CF neckline, minor hem fraying, 1.75" seam opening b/t velvet & crepe at yoke/belt join, SS closures partially detached) excellent; 1 blue silk velvet dress w/ mm lace at V-neckline, shaped gathering to base of neck opening & hat CF W, long sleeve w/ self covered buttons to wrist, drop W w/ double flared appliqué drape & hem flounce, lined in cream silk crepe, B 38", W 33", L 41"-45", (discoloration/pulling to lace collar, stains/tiny holes lining, 1" seam opening left underarm, few spot stains, missing right cuff button, 1.5" crushing right SH blade, 0.5" repair right W) good. SHSU.



236: THREE VELVET OR JERSEY DRESSES, 1930-1940s

USD 300 - 500

1 short sleeved black rayon velvet dress w/ gathering below empire front W, CF gathers to draped midriff, short puff sleeves w/ side tucks, draped back belt, B 34", W 27", L 44.5", (minor crushing, few tiny spot stains, 1" area of pulling back left W) very good; 1 vermilion jersey dress w/ strong SH, V-neckline w/ gathering below clavicle & incorporated darts for shaping over B, draped peplum w/ CF vertical gathers, ankle length skirt, B 40", W 24", L 57", (1.25" seam opening CF V, 2 unpicked B darts, belt missing, tiny-2" holes throughout, hem stains) fair; 1 sleeveless black silk velvet dress, B 40", W 33", L 51", (hem falling, fraying CF neckline, CB neckline seam binding shattering, patches minor crushing) very good. Sam Houston State University.



237: TWO CREPE & VELVET EVENING DRESSES, 1930s

USD 300 - 500

Bias cut purple hammered crepe evening dress w/ rayon velvet cowl collar, medieval style cartridge pleated full sleeves & triple corded covered W cinture w/ rhinestone linked CF closure & CB spacer, CB keyhole, B 33", W 28", L 58", (tide marks hem, tiny-4" stains, 0.25"-1" seam openings, tiny holes CF, belt buckles bent w/ missing stones & ends) fair; 1 green rayon velvet dress, Schiffler lace yoke w/ silvered crystal bugle beaded chiffon applique, full bodice draped into V front panel, full sleeve gathered at elbow, original self-belt w/ Deco past buckle, B 42", W 36", L 54.5", (stone loss to buckle, 5.5" seam opening left underarm & 1.25" left SS, minor bead loss, shattering to cuff hem tape, minor crushing) good. Sam Houston State University.



238: TWO SUMMER PARTY DRESSES, 1930s

USD 400 - 600

1 peach silk organza dress w/ double tapered & ruffled collar, wide bicolored W sash, triple gathered hem flounce, c. 1933, B 33", W 28", L 51.5", (slip N/I, light staining, left belt loop detached, few tiny holes, wear to CB seam, SS's altered to make smaller) very good; 1 sleeveless floral printed chiffon dress in vegetal, floral & geometric motifs w/ complex inset chevron shaping & bias panels, silk taffeta slip included, B 38", W 34", L 50.5", (velvet yellow flower detached & included, lining stained, tiny holes at underarms, tiny-0.25" holes left side skirt, staining esp. to hem) good-very good. Sam Houston State University.



239: FLORAL PRINTED SILK PARTY DRESS, 1938-1940

USD 500 - 800

Bias cut printed crepe back silk satin halter dress w/ CF keyhole, & plunging back w/ row of self-covered button & loop closures, pieced & let out box pleated back body for full skirt, B 33", W 25", L 59", (neck ties damaged & later addition, 1" seam opening CB below buttons, pulling to pleats, 0.5" & 0.75" stains seat, hem let down w/ stitches visible, scattered tiny-0.25" spot stains esp at lap) very good.

Annual Autumnal Elegance



240: HOODED BLACK LACE EVENING DRESS, 1940s

USD 800 - 1,200

Black silk crepe w/ black Chantilly lace bishop sleeves, bodice overlay & hood, green faceted glass decorative CF buttons, B 36", W 28", L 60", (light wear/pulling at cuffs w/ 2 small holes, light fading to colored glass buttons, left SH strap of slip detached at back) excellent.



241: LAME SILK DAMASK EVENING DRESS, c. 1935

USD 500 - 800

Lame damask evening dress in chinoiserie influenced motif w/ plunging V illusion neckline & tie belt of cream crepe chiffon w/ lame leaf motif, spiral pieced body into asymmetrical handkerchief hemline, B 33", W 30", L 60", (hem lightly worn w/ some shattering, 0.5" seam opening CF B, 0.5" repair CF seam, SH straps repaired, pulling to lame, repair to seat, 1.5" tear left armscye & 0.5" right) good.



242: RHINESTONE & CRYSTAL BEADED EVENING DRESS, EARLY 1930s

USD 500 - 800

Black silk georgette w/ rhinestone & flashed crystal beading to Bermuda collar extending over SHs & into deep swallowtail revers at plunging back, narrow vertical panel at CF w/ tucks at either side for B fullness extending into front W, arched piecingover Hs, inserted horizontal ruffled panel below knee, B 39", W 28", L 57.5", (few missing/discolored stones, many 0.25"-0.75" seam openings left lower SS, tiny pulls, underarm pads stiff) excellent.



243: BEADED VELVET & SILK BROCADE EVENING DRESS, LATE 1920s

USD 500 - 800

Heavy silk satin brocaded in arabesque motif in raised rib pattern & silk velvet linear motifs overlaid w/ iridescent glass bugle bead to accentuate underlying motifs, scoop neck, short sleeve, draped W sash gathered intofall at left H w/ long silk tasseled fringe, B 38", W 36", L 43.5", (minor bead loss, tiny-0.25" holes lap, fringe ends fraying) excellent.500



244: BEADED LAME EVENING JACKET, c. 1925

USD 500 - 800

Gold & silver lame evening jacket in unlocking hatchet pattern w/ neckline, CF opening & sleeve borders beaded in scarlet short bugle beads & pomegranate seed beads in squared diaper motif outlined in rhinestones, left H pocket heavily beaded,sequined & w/ graduated paste rubies, B 36", L 30", (stone & bead loss, seam strain at armscyees, scattered pulls)



245: BEADED GEORGETTE PARTY DRESS, 1920s

USD 500 - 800

Peach georgette evening dress embroidered w/ silvered bugle & seed bead in floral, geometric & scroll motifs, densely beaded bands to neckline, armscye, W, along scalloped hem & to flared skirt panels, B 34", L 38.5", (pulling & reinforcement to left SH, minor bead loss, 1.5" & 2.5" repairs CF W, SSs pulling, tiny-0.5" spot stains & holes hem) good.



246: LAME CHAINSTITCH EMBROIDERED EVENING DRESS, c. 1928

USD 500 - 800

Silver & gold chainstitch embroidered tulle evening dress w/ faux pearl, chatoyant short bugle beads & rhinestones to armscye, scoop neckline at front into V at CB w/ medallion, B 40", L 47", (minor bead/stone loss, 0.75" hole right SH strap, tiny-0.5" holes in net, minor tarnish, several 2"-5" tarnish patches lap & hem, 0.5" tear CF hem) very good.

Annual Autumnal Elegance



247: ELABORATELY BEADED & CUTAWAY PARTY DRESS, MID 1920s

USD 1,200 - 1,600

Cream georgette Luneville embroidered party dress w/ silvered bugle beads & iridescent sequins in petaled floral & medallion motifs on beaded grid w/ elaborately cut away ground & solid bands forming SH straps & scooped bands across front, B 41", L 43.5", (minor bead loss, discoloration around neckline, fraying at cutout edges, some shattering SHs, 2.5" stain left H, tiny spot stains hem) good-very good.



248: EMBROIDERED KNIT DAY DRESS, FRANCE, 1920s

USD 1,200 - 1,600

Silk Corelli chainstitch embroidery on metallic & silk tricot ground, label "Bonwit Teller & Co. French Hand Made", unstretched B 34", W 31", L 48", (tarnish, embroidery wear, hem stitching mostly undone & fraying, taken in at sleeves, pulls, tiny-0.5" wear spots) excellent. 1200



249: CUT VELVET & LAME WINTER EVENING COAT, EARLY 1920s

USD 800 - 1,200

Blue voided velvet on lame rib ground in sea serpent floral motif w/ broad convertible ermine collar & cuffs, lined in cream patterned silk, open B 54", L 43", SH-SH 24", (2" & 2.5" seam openings CB collar, wear & breaks to fur tails inside collar & lapel, dye bleed stains left side lining hem, tiny pulls to lining) excellent.



250: PAQUIN SILK EVENING CLOAK, PARIS, A/W 1924-1925

USD 4,000 - 6,000

Patterned cream silk evening cloak w/ raised welt in classical stylized leaf & undulating band motif on satin ground, natural ostrich feather rows applied to silk organza bands at neckline & above hem, lined in pale peach panne velvet, label "Paquin Made in France, Hiver 1924-1925, Paris, Londres Buenos-Aires? original design by Madeleine Wallis, Ete 1924, croquis held in V&A Collection accession # E.4145-1957. Described as "White evening cloak with gold lame brocade pattern & ostrich feather trimming", SH-SH 19", L 52", (3" seam opening b/t lining & left lapel, bent & missing feathers, few tiny spot stains & pulls, tiny-0.5" holes & repaired seams all to lining) very good. From the Collection of A.T. Jones & Sons.
